



KAMPALA CITY'S GREEN AGENDA

Isaac Luwaga Mugumbule

Head Landscaping & Greening, Directorate of Physical Planning

Email: imugumbule@kcca.go.ug

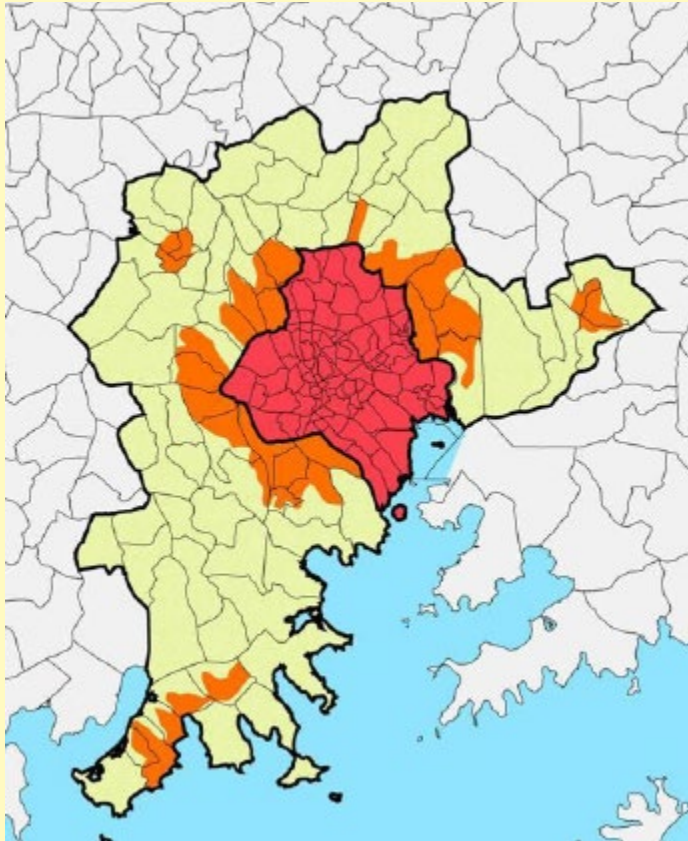
Together we can transform Kampala city

KAMPALA'S URBAN SPRAWL

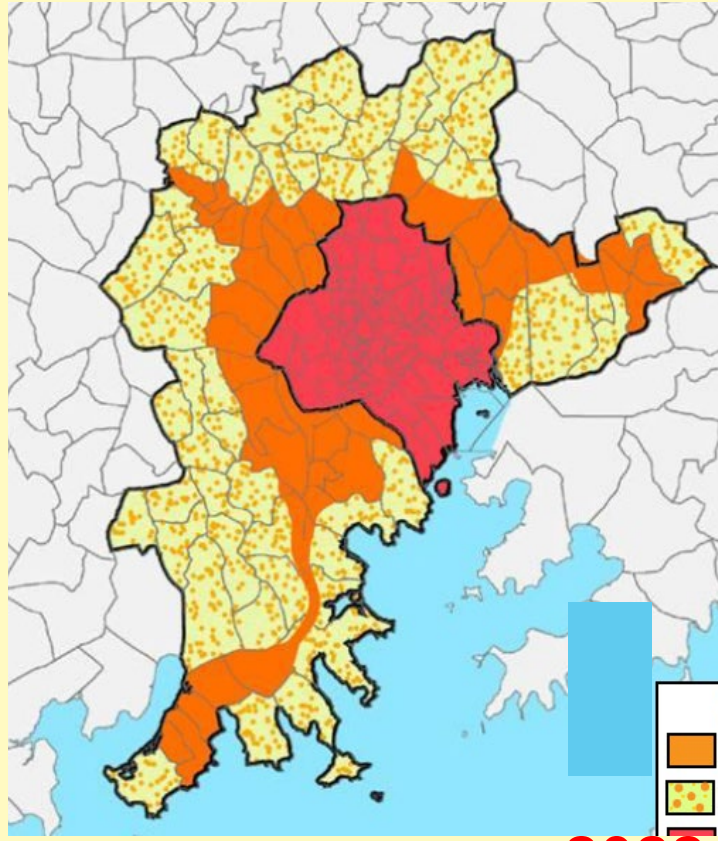
KAMPALA AREA: 189 sqkm

DAYTIME POPULATION: 3 million people

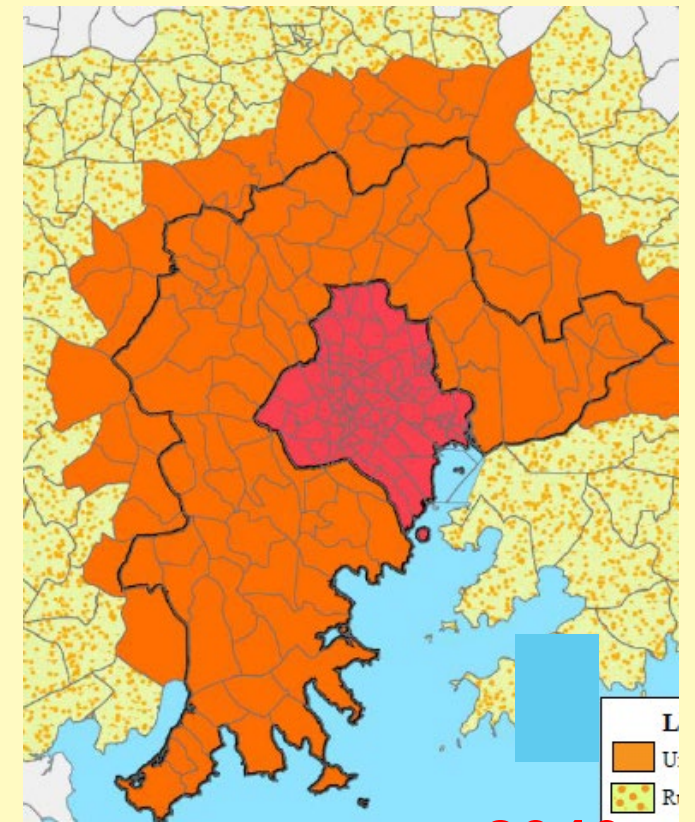
NIGHT TIME POPULATION: 1.5 million people



2012



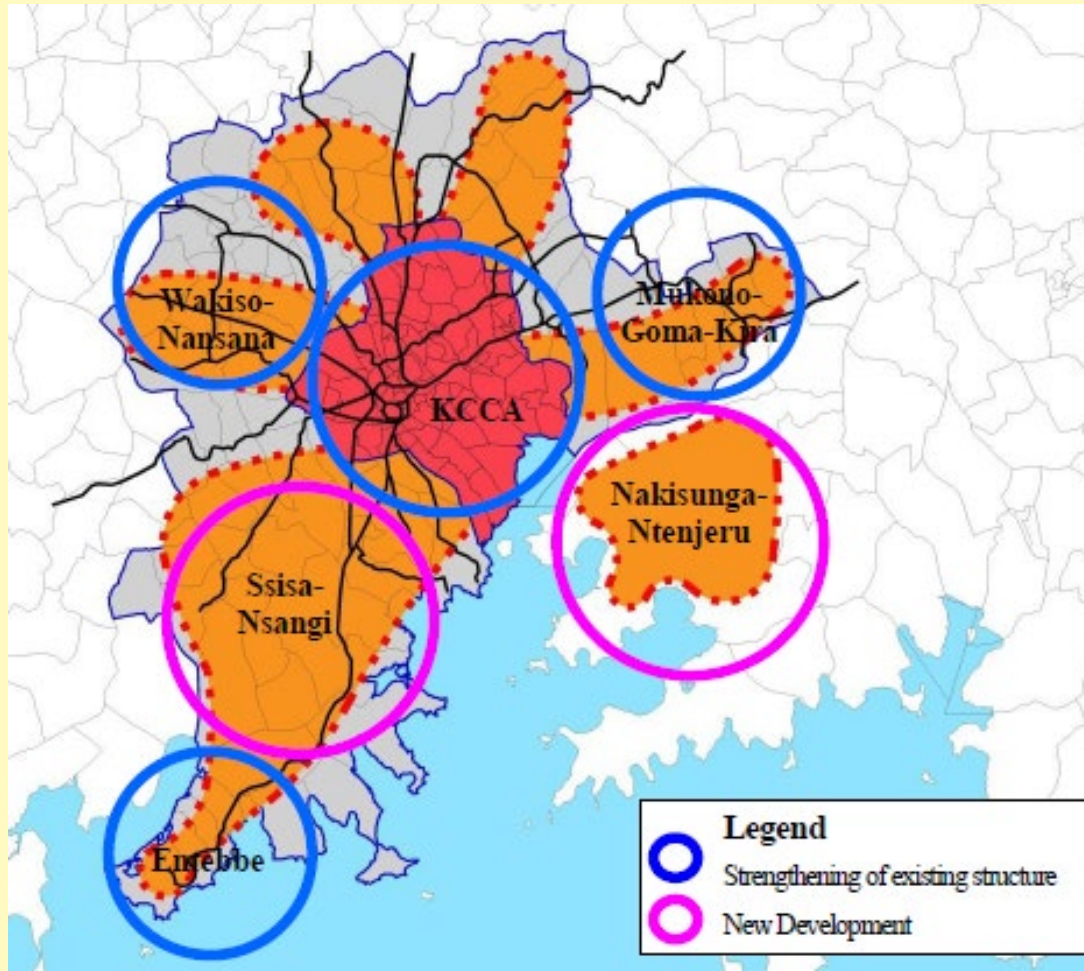
2022



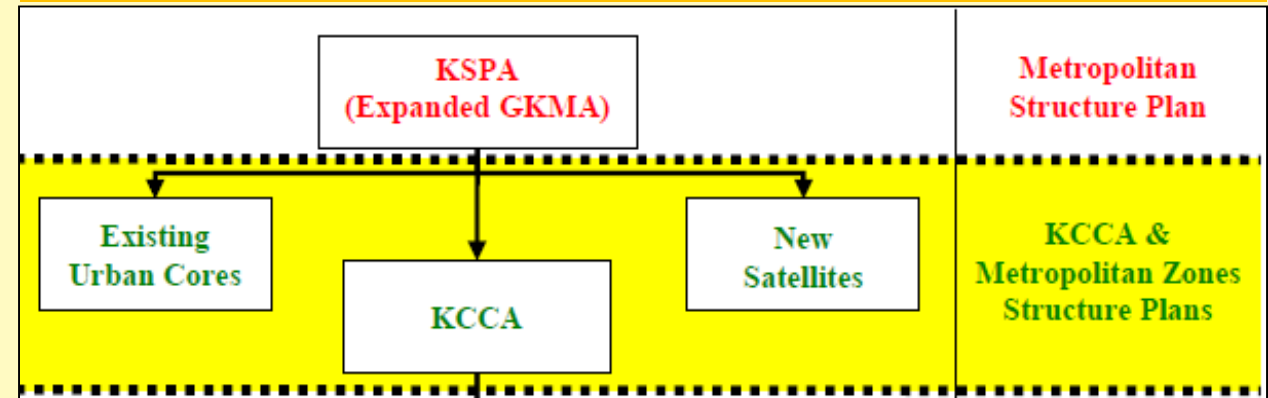
2040

SPATIAL MODELS – RADIAL INTEGRATED MODEL

Rather than discard the existing administrative structures, identify ways of strengthening them.



MINISTRY OF KAMPALA AND METROPOLITAN AFFAIRS



STRENGTHENING MANAGEMENT OF KAMPALA

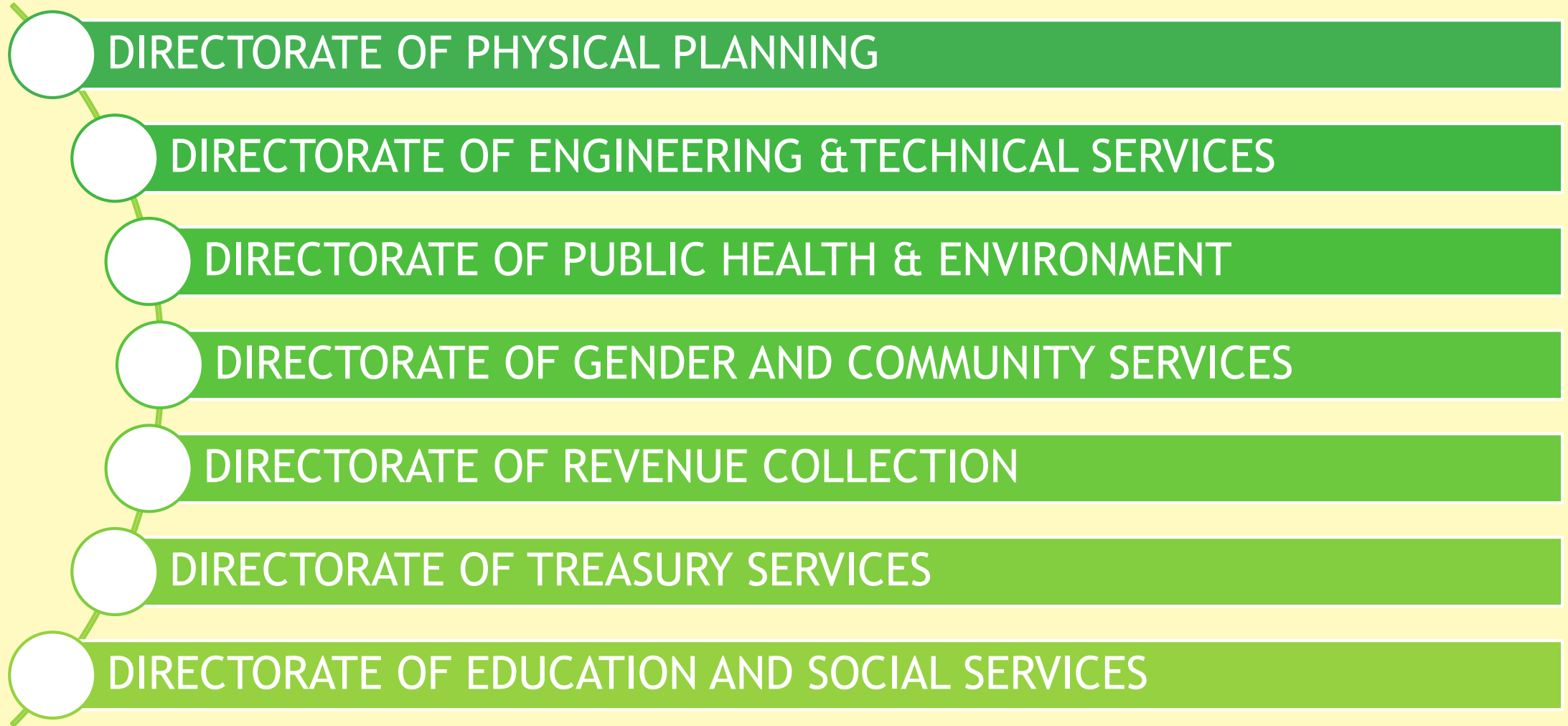
In 2010, KCCA Act was passed by the Parliament of Uganda leading to the creation of Kampala Capital City Authority (KCCA).

In line with the KPDP 2012, the Ministry of Kampala and Metropolitan Affairs was created by the President of Uganda to ease political administration within neighbouring urban centres.



KCCA's vision is for Kampala “To be a **Vibrant**, **Attractive** and **Sustainable** City”

KCCA'S MANAGEMENT STRUCTURE



KAMPALA CLIMATE CHANGE ACTION PLAN

In 2016, Uganda joined several countries in signing the Paris Agreement. At national level, government was committed to addressing climate change as outlined in then National Development Plan II.

KCCA then launched the Kampala Climate Change Action Strategy with six focus areas, namely:

1. Being an example as a Capital City
2. Promote Efficiency & sustainability in energy usage
3. Supporting the green economy
4. Sustainable mobility solutions
5. Landscaping a more resilient and low carbon Kampala
6. Improve waste management in the City



FUNDING PARTNERSHIPS

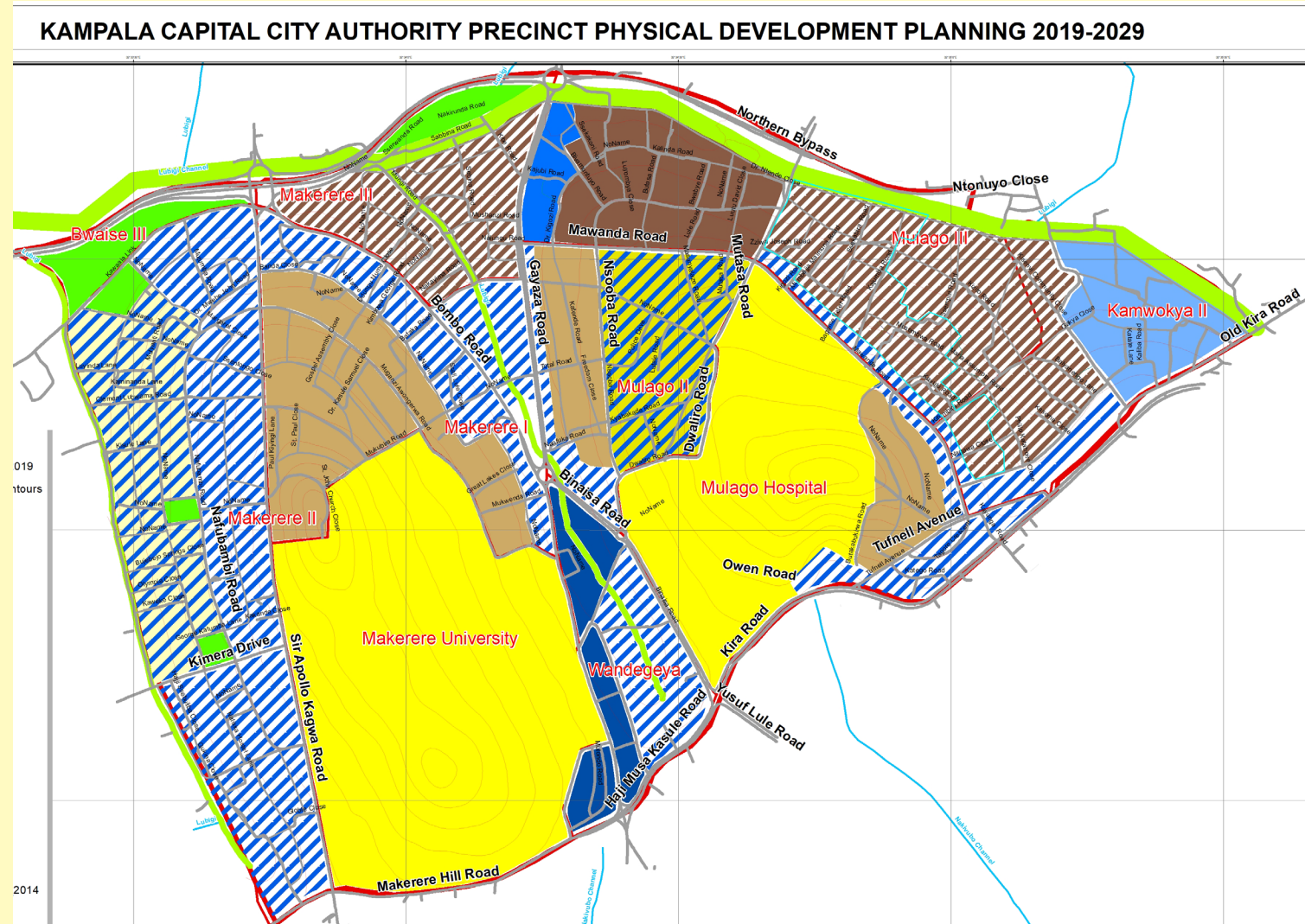
Under the European Union Covenant of Mayors for Sub Saharan Africa (EU-CoM SSA), **Kampala City** and other co-beneficiaries (**Kasese and Entebbe Municipalities**) were recipients of donor funding .



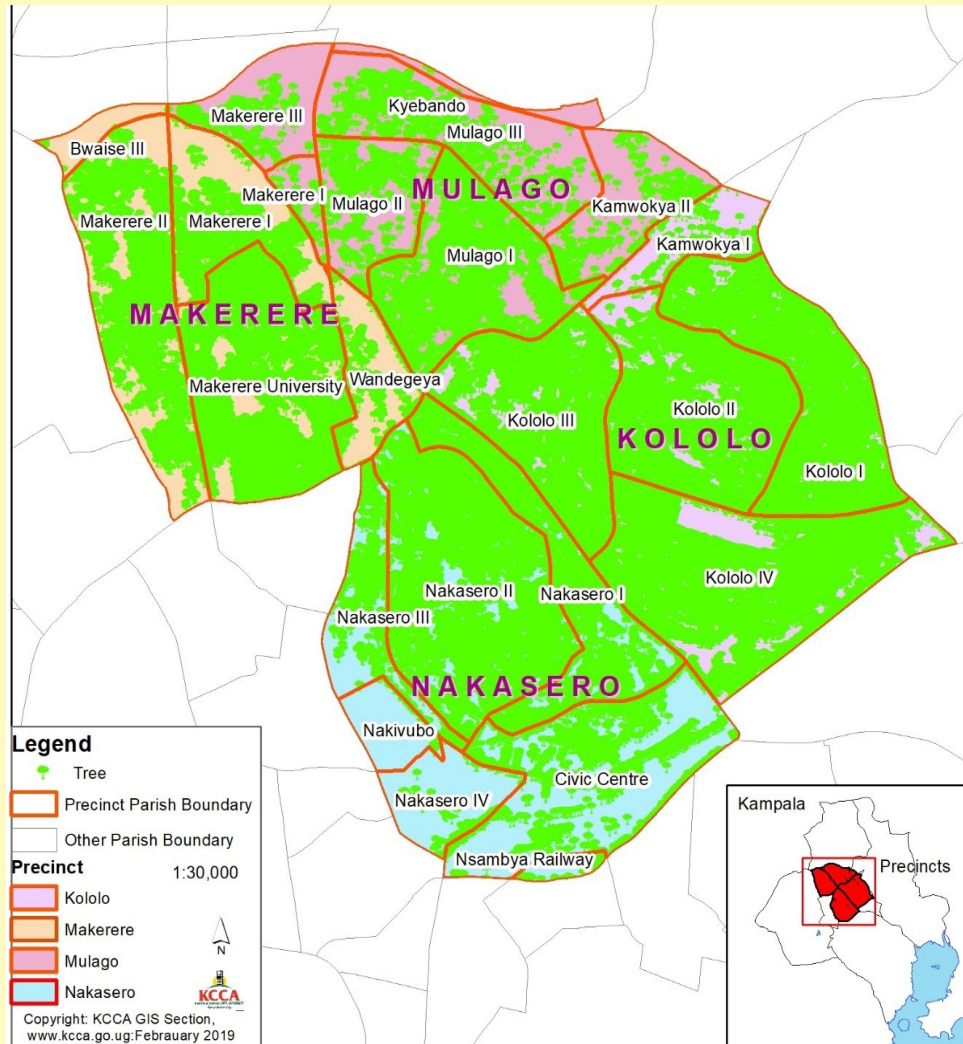
COMPONENT 2.1: DETAILED NEIGHBOURHOOD PLANNING

Development of **four (04)** Precinct Physical Development Plans

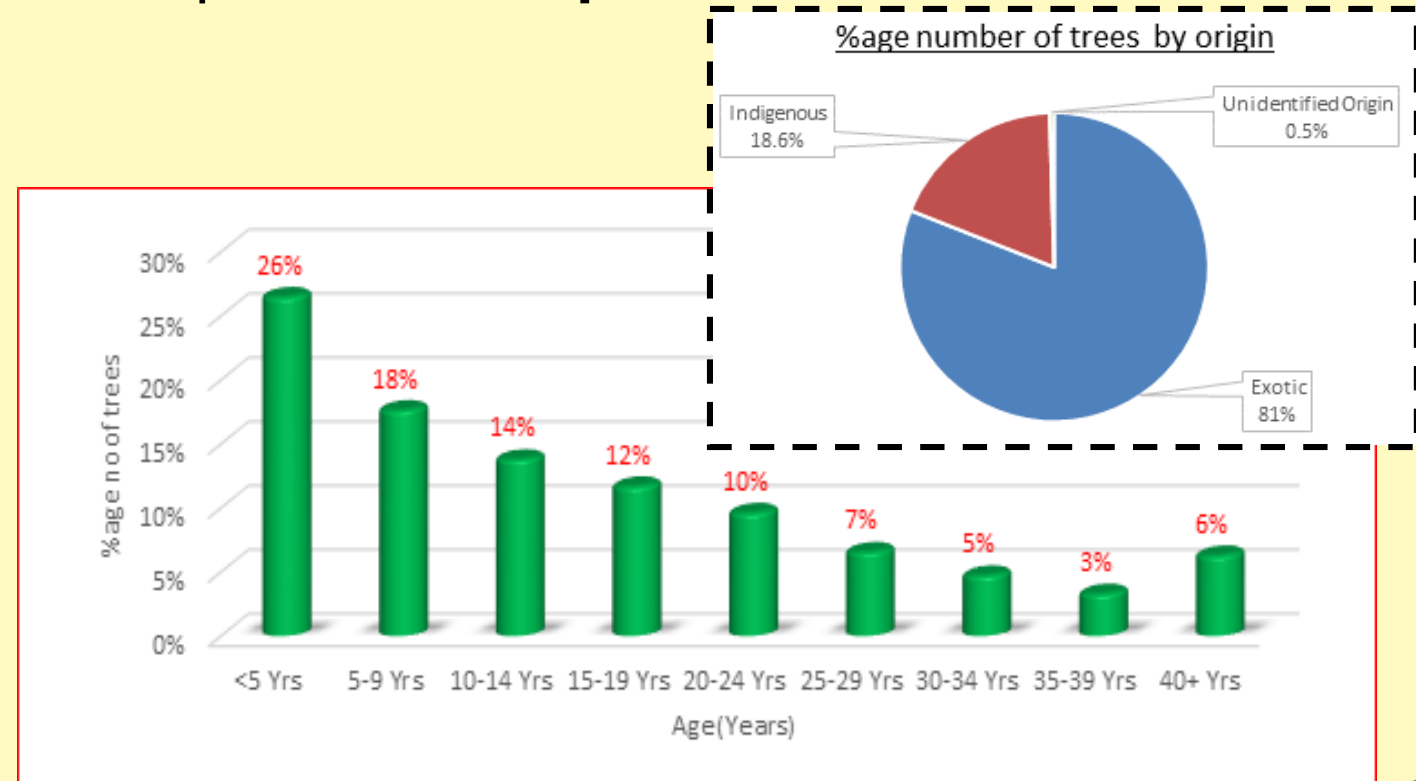
- *Makerere precinct*
- *Nakasero precinct*
- *Kololo precinct*
- *Mulago precinct*



COMPONENT 2.2: URBAN FORESTRY MANAGEMENT PLAN



- Area covered : 1,625 Hectares
- Trees counted: 53,268 trees
- Tree species: 328 species



COMPONENT 5.1: SOUTH – SOUTH COOPERATION

KCCA staff training other staff in the co-beneficiary municipalities of Entebbe and Kasese in developing their SEACAP



COMPONENT 5.2: NORTH – SOUTH COOPERATION

KCCA signed an MOU with the City and Eurometropole Strasbourg in April 2019 as part of the North-South cooperation agreement.



The three main thematic areas of cooperation include:

- 1. Education**
- 2. Green spaces**
- 3. Urban agriculture**

ICLEI - URBAN NATURAL ASSETS MAPPING PROJECT

FUNDER: Urban Natural Assets for Africa: Rivers for Life (UNA Rivers) is implemented by ICLEI's Cities Biodiversity Center.

AIM: to mainstream biodiversity and ecosystem services into land use planning and local government decision-making processes that relate to urban river systems.

UNA-RIVERS URBAN NATURAL ASSETS MAPPING
KAMPALA



OPPORTUNITIES – GREEN AGENDA IN AFRICAN CITIES

- Increased North-South cooperation between Developed cities and Developing cities
- Strengthening linkages between Developing cities (South – South)
- Improved cooperation between various government sectors
- Increased sensitization on Climate Change from the grassroots

CITIES ARE THE CATALYSTS OF THE GREEN AGENDA