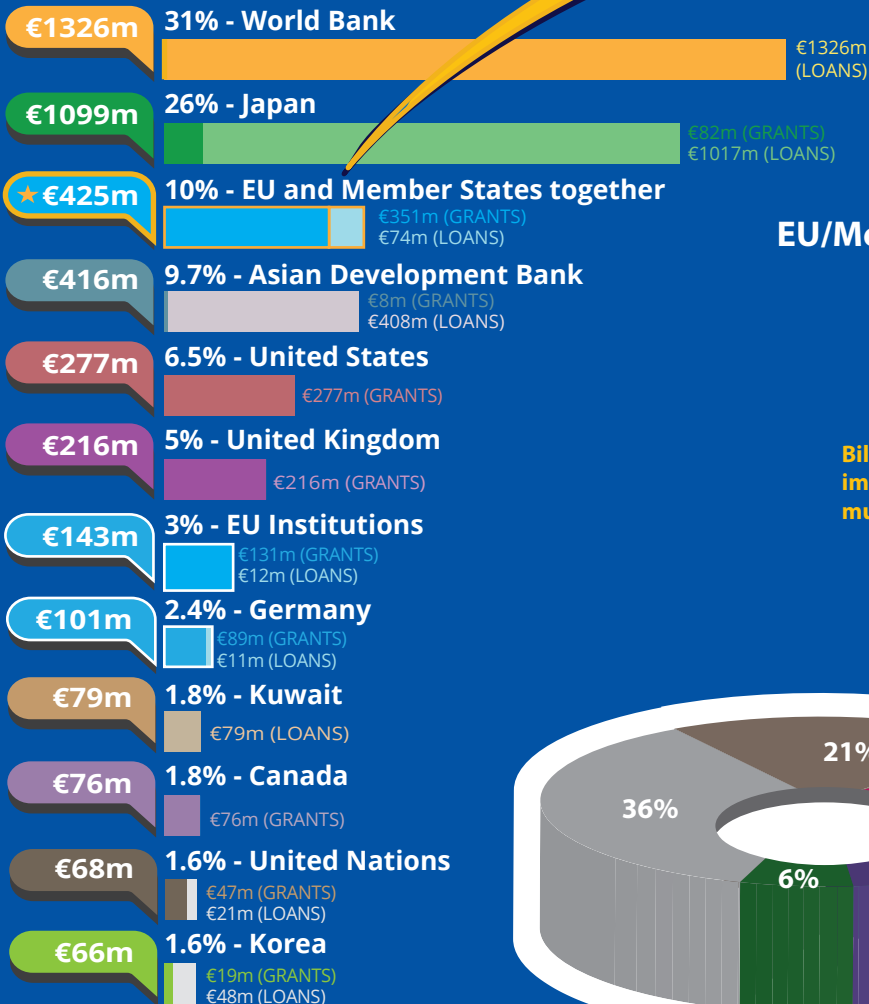




Bangladesh's partners in 2018*



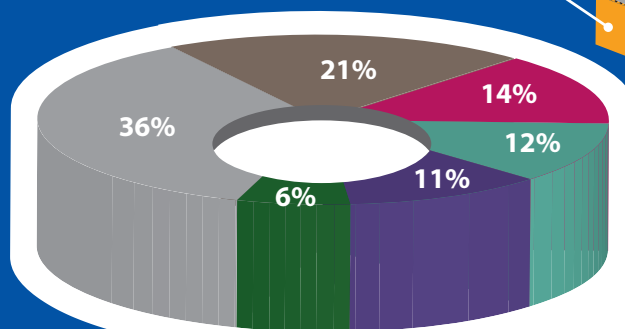
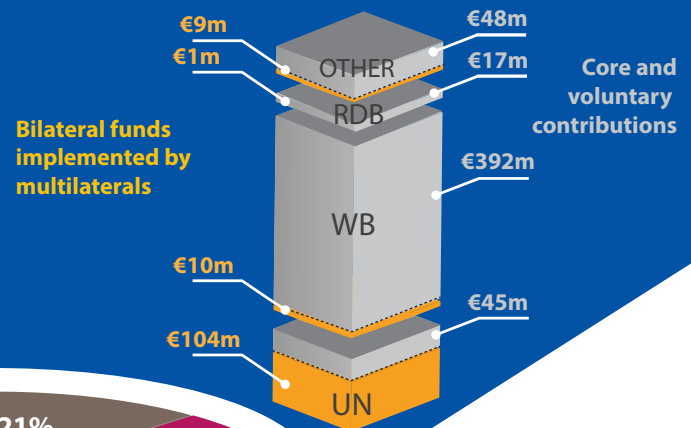
€182m Other present EU/MS
Austria, Belgium, Czech Republic, Denmark, Estonia, Finland, France, Ireland, Italy, Luxembourg, Netherlands, Poland, Romania, Spain and Sweden.

€927m
Total EU / Member States ODA

€425m EU/Member States together
10% of global bilateral flows

EU/MS multilateral core and voluntary contributions **€502m**

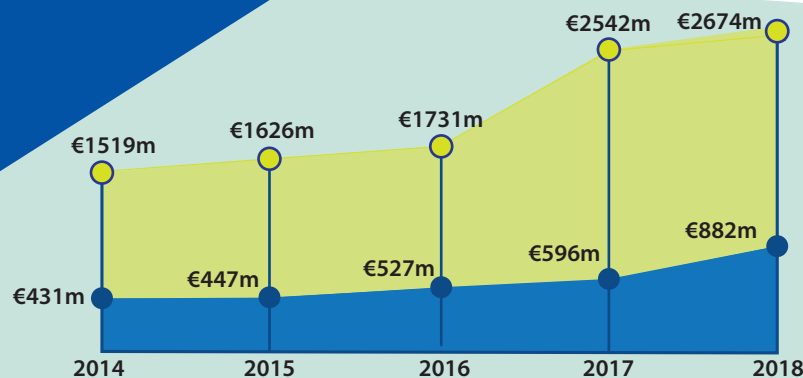
EU/Member States funds through multilaterals



The main sectors funded by the EU/Member States

- Emergency Response
- Energy
- Government & Civil Society
- Education
- Water Supply & Sanitation
- Other

*Based on ODA disbursements in the particular year.



EU/Member States ODA trends 2014-2018 (€)

■ EU / Member States
■ All other DAC providers

For more information contact:

EEAS JOINT PROGRAMMING:
joint-programming-support@eeas.europa.eu

EU AID EXPLORER:
<https://euaidexplorer.ec.europa.eu>

DEVCO JOINT PROGRAMMING:
devco-joint-programming-support@ec.europa.eu

NEAR JOINT PROGRAMMING
NEAR-JOINT-PROGRAMMING@ec.europa.eu

Sources:

OECD DAC CRS
IMF WEO 2018 Database

Exchange rate: \$1 = €0.8473
(OECD exchange rate for 2018)

JOINT PROGRAMMING TRACKER:

<https://europa.eu/capacity4dev/joint-programming-tracker>

Note: EU/MS refers to the EU and its Member States together.

Differences between figures for total EU/MS ODA and ODA trends are due to use of different OECD data sources (with higher level of granularity in 2018).

RDBs = Regional Development Banks.





Investing in Sustainable Development in Bangladesh



GDP €232 bn ↑

GDP per capita
Fiscal position

€1,439 ↑*
-1.5% ↓



Population 161.4m ↑

Poverty head count ratio at national poverty line 24.3%
Multidimensional poverty 41.7%
GINI index 32.4

Human Development Index (UN)

Index 0.61 ↑
Ranking (of 189 countries) 135

Low Middle Income Country (World Bank classification)
Least Developed Country (UN classification)



Trade figures (% of GDP)

Imports of goods 20.3 ↓
Exports of goods 14.1 ↓
Imports of services 3.6 ↓
Exports of services 2.0 ↑

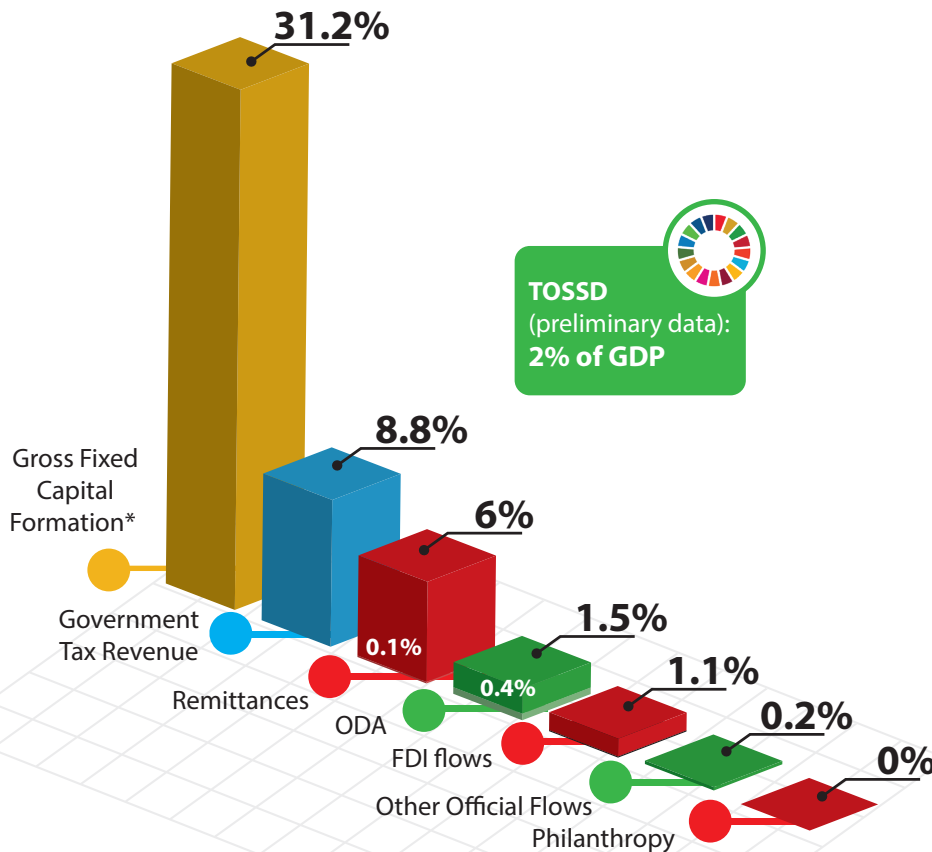
Ease of doing business index

Index 45 ↑
Ranking (of 190 countries) 168

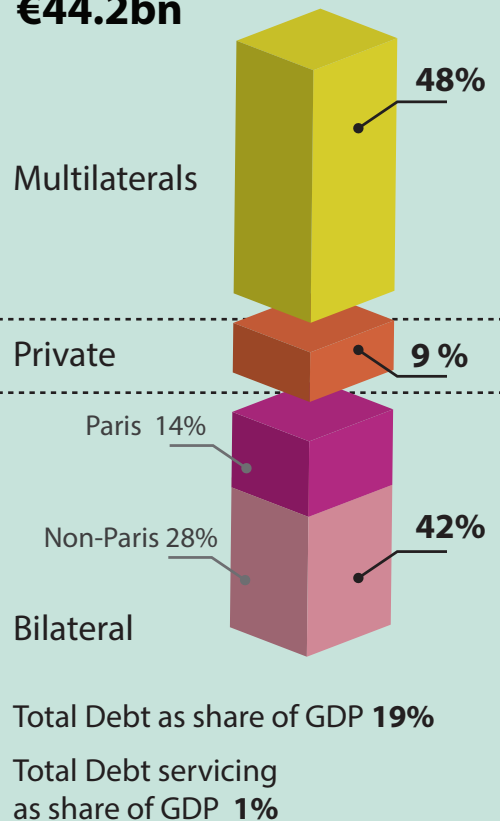


* Compared to average of previous years

Financing for Development as % share of GDP



External debt stock €44.2bn



Public domestic Private domestic
Public international Private international EU/MS shares

For more information contact:

EuropeAid-FINANCING-FOR-SUSTAINABLE-DEVELOPMENT@ec.europa.eu

Exchange rate: \$1 = €0.8473
(OECD exchange rate for 2018)

Sources:

OECD DAC CRS, World Bank WDI
UNDP, EDGAR, JRC, World Bank
Remittances database, Eurostat
and IMF External Debt Statistics

Note: EU/MS refers to the EU and Member States together

For more information on TOSSD: www.tossd.org

*Measure of total investment in the domestic economy (overlap with FDI possible)

Paris refers to debts to the Paris Club of creditors (22 countries)

