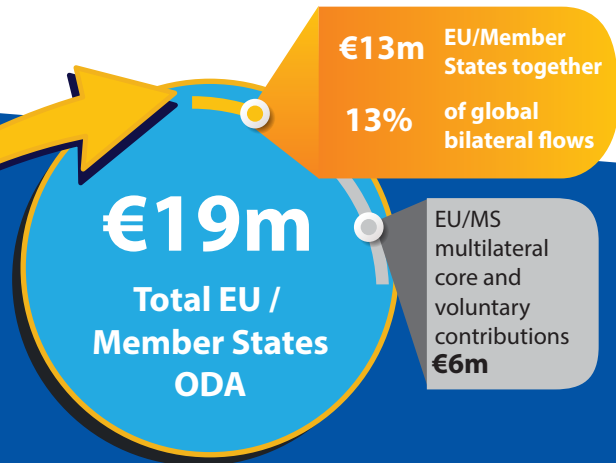
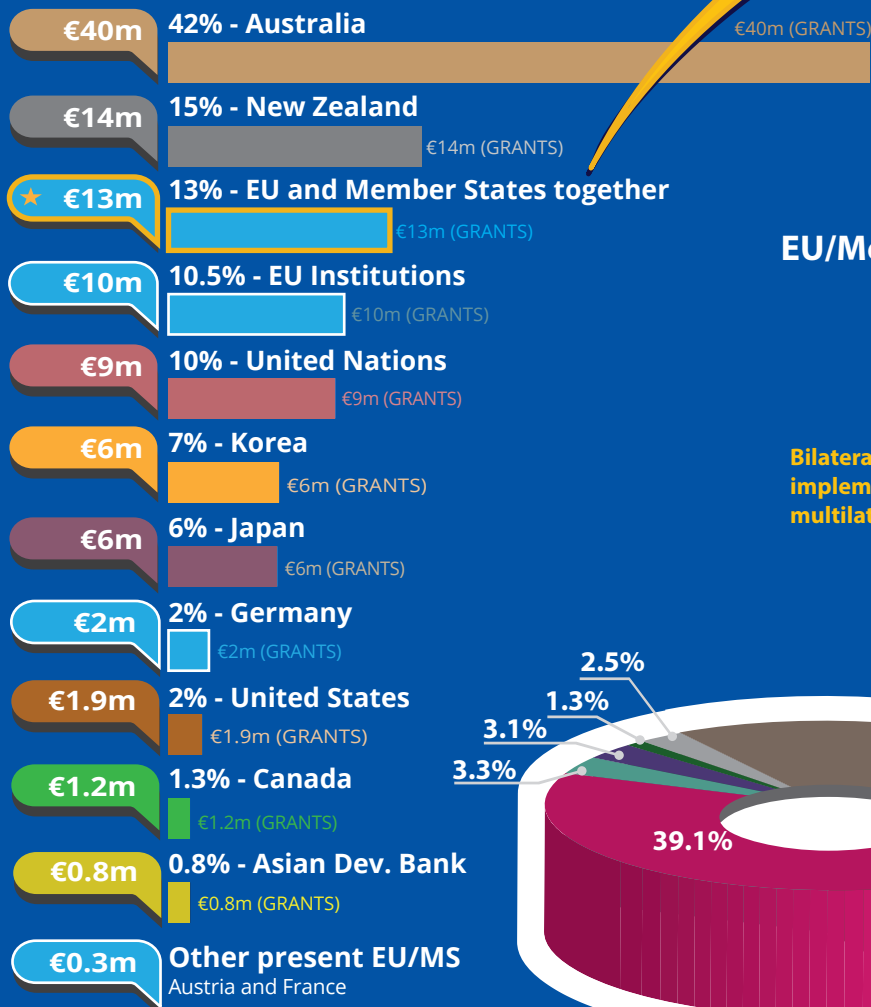
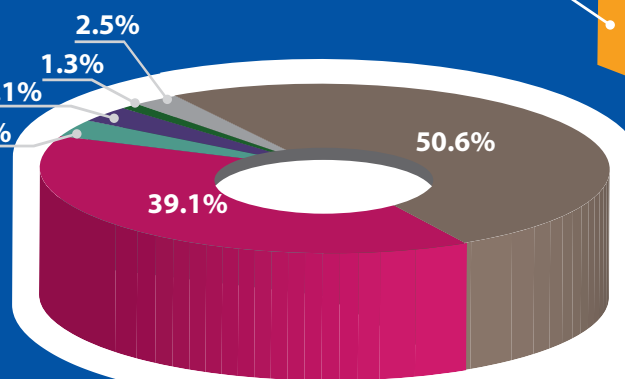
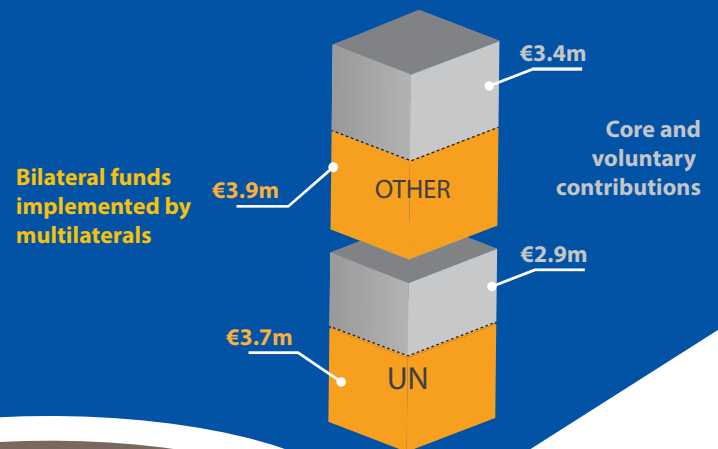




Fiji's partners in 2018*



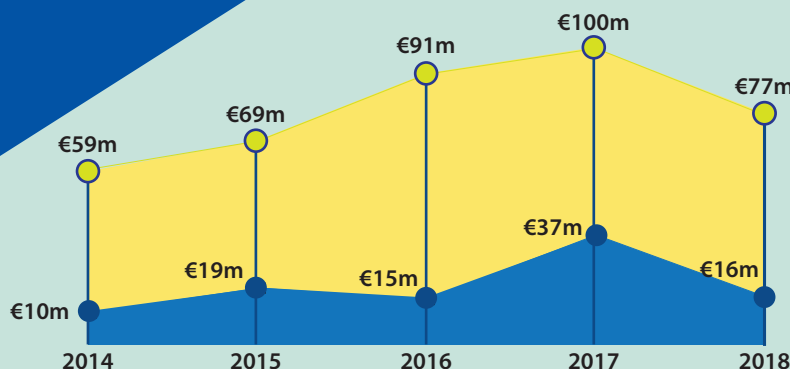
EU/Member States funds through multilaterals



The main sectors funded by the EU/Member States

- Agriculture, Forestry, Fishing
- Government & Civil Society
- Education
- Multi-Sector / Cross-Cutting
- Other Social Infrastructure & Services
- Other

*Based on ODA disbursements in the particular year.



EU/Member States ODA trends 2014-2018 (€)

- EU / Member States
- All other DAC providers

For more information contact:

EEAS JOINT PROGRAMMING:
joint-programming-support@eeas.europa.eu

EU AID EXPLORER:
https://euaidexplorer.ec.europa.eu

DEVCO JOINT PROGRAMMING:
devco-joint-programming-support@ec.europa.eu

NEAR JOINT PROGRAMMING
NEAR-JOINT-PROGRAMMING@ec.europa.eu

Sources:

OECD DAC CRS
IMF WEO 2018 Database

Exchange rate: \$1 = €0.8473
(OECD exchange rate for 2018)

JOINT PROGRAMMING TRACKER:

<https://europa.eu/capacity4dev/joint-programming-tracker>

Note: EU/MS refers to the EU and its Member States together.

Differences between figures for total EU/MS ODA and ODA trends are due to use of different OECD data sources (with higher level of granularity in 2018).

RDBs = Regional Development Banks.





Investing in Sustainable Development in Fiji



GDP €4.7bn ↑

GDP per capita
Fiscal position

€5,310 ↑ ↓
-4.4%

Population 0.88m ↑

Poverty head count ratio at national poverty line 34%
GINI index 36.7

Human Development Index (UN)

Index 0.72 ↑
Ranking (of 189 countries) 98

Upper Middle Income Country (World Bank classification)

Trade figures (% of GDP)

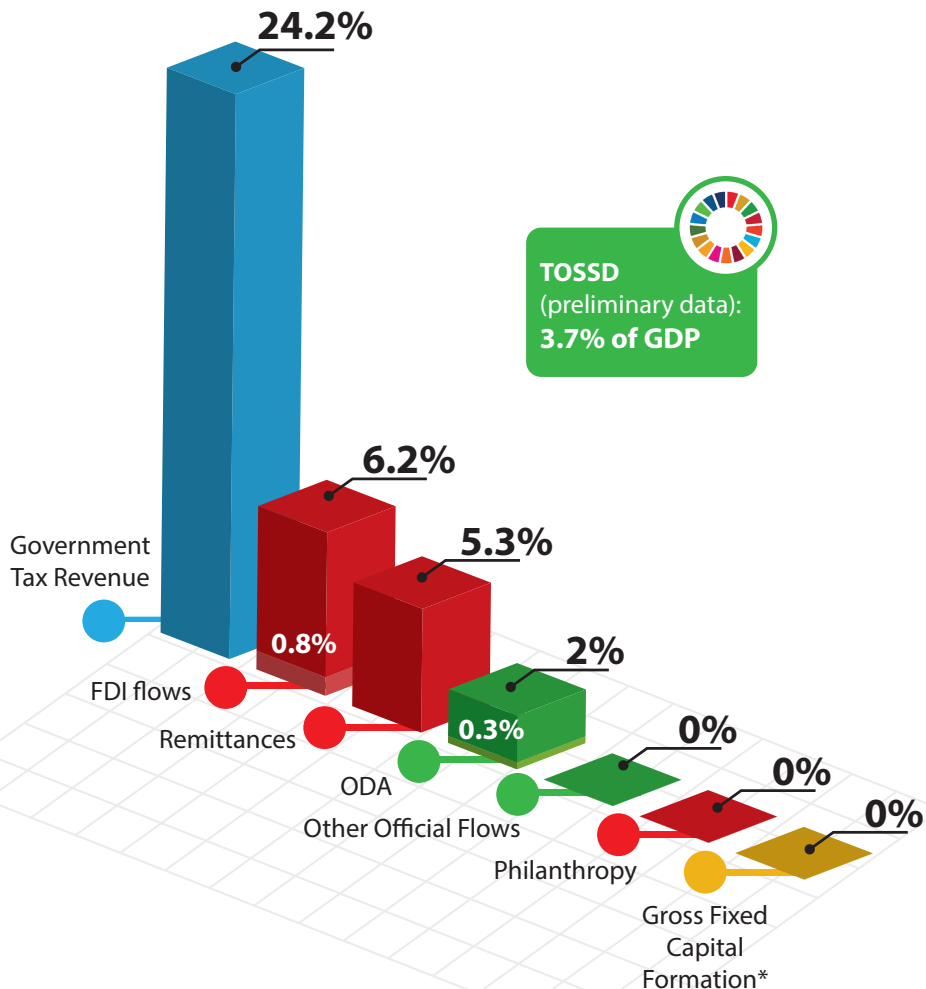
Imports of goods 42.7 ↓
Exports of goods 18.3 ↓
Imports of services 13.2 ↑
Exports of services 29.9 ↑

Ease of doing business index

Index 61.5 ↓
Ranking 102
(of 190 countries)

* Compared to average of previous years

Financing for Development as % share of GDP



External debt stock

€0.7bn

Multilaterals

29.8%

Private

0%

Non-Paris 69.6%

70.2%

Bilateral

Paris 0.6%

Total Debt as share of GDP **15.4%**

Total Debt servicing as share of GDP **1%**



For more information contact:

EuropeAid-FINANCING-FOR-SUSTAINABLE-DEVELOPMENT@ec.europa.eu

Exchange rate: \$1 = €0.8473
(OECD exchange rate for 2018)

Sources:

OECD DAC CRS, World Bank WDI
UNDP, EDGAR, JRC, World Bank
Remittances database, Eurostat
and IMF External Debt Statistics

Note: EU/MS refers to the EU and Member States together

For more information on TOSSD: www.tossd.org

*Measure of total investment in the domestic economy (overlap with FDI possible)

Paris refers to debts to the Paris Club of creditors (22 countries)

