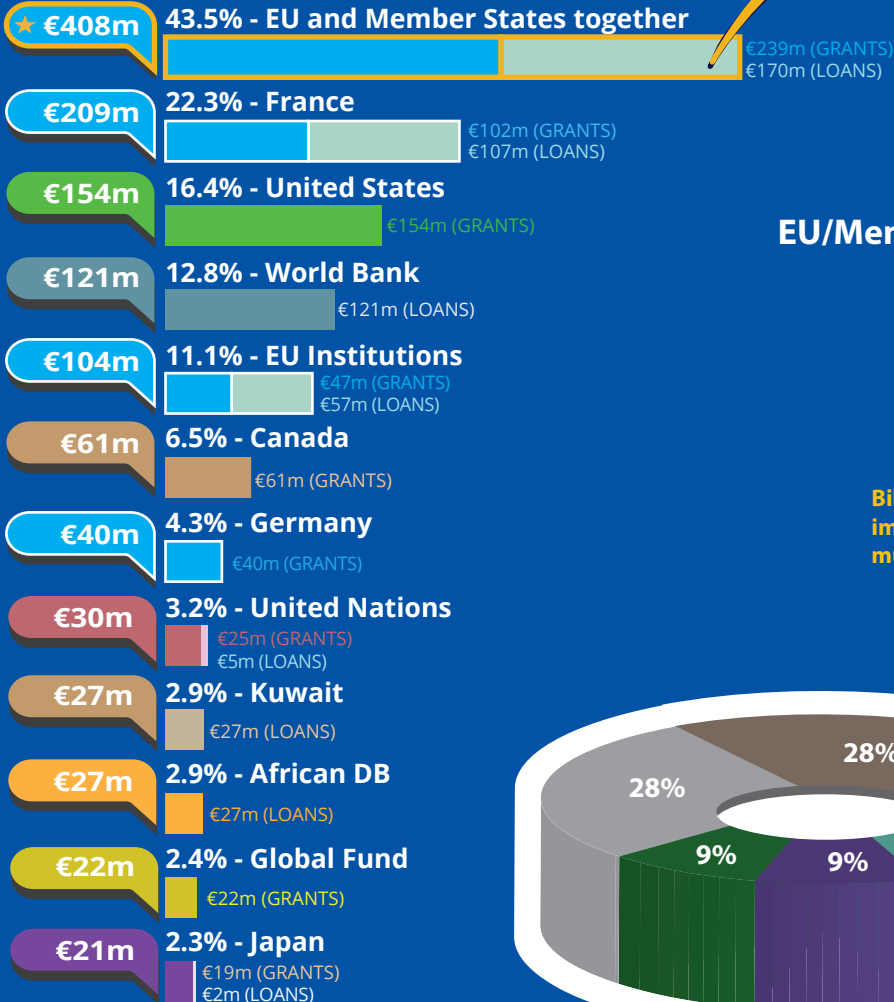
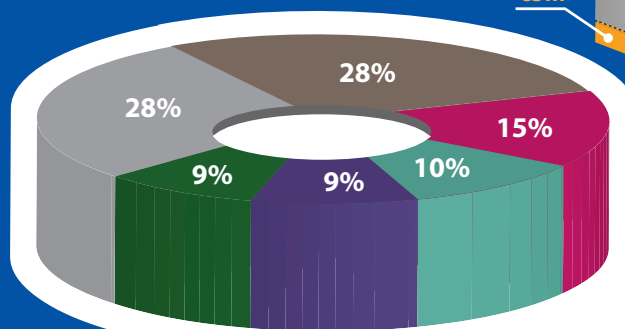
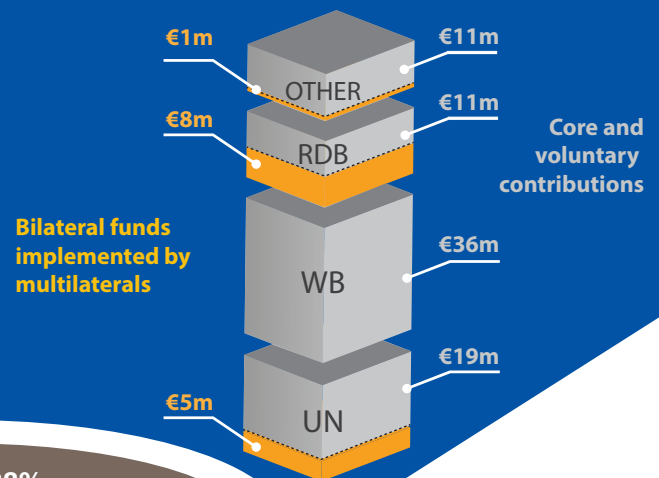




## Senegal's partners in 2018\*



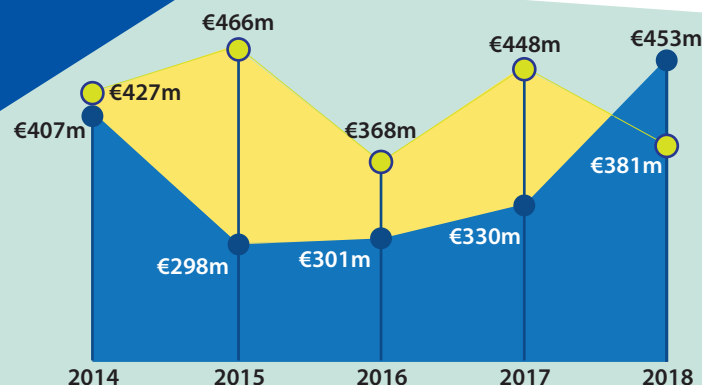
### EU/Member States funds through multilaterals



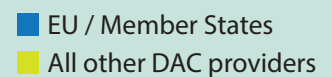
### The main sectors funded by the EU/Member States



\*Based on ODA disbursements  
in the particular year.



### EU/Member States ODA trends 2014-2018 (€)



#### For more information contact:

EEAS JOINT PROGRAMMING:  
joint-programming-support@eeas.europa.eu

EU AID EXPLORER:  
https://euaideexplorer.ec.europa.eu

DEVCO JOINT PROGRAMMING:  
devco-joint-programming-support@ec.europa.eu

NEAR JOINT PROGRAMMING  
NEAR-JOINT-PROGRAMMING@ec.europa.eu

#### Sources:

OECD DAC CRS  
IMF WEO 2018 Database

Exchange rate: \$1 = €0.8473  
(OECD exchange rate for 2018)

#### JOINT PROGRAMMING TRACKER:

<https://europa.eu/capacity4dev/joint-programming-tracker>

Note: EU/MS refers to the EU and its Member States together.

Differences between figures for total EU/MS ODA and ODA trends are due to use of different OECD data sources (with higher level of granularity in 2018).

RDBs = Regional Development Banks.





# Investing in Sustainable Development in Senegal



**GDP €20.4bn ↑**

GDP per capita  
Fiscal position

€1,290 ↑\*  
-3.8% ↑



**Population 15.85m ↑**

Multidimensional poverty

53.2%

**Human Development Index (UN)**

Index  
Ranking (of 189 countries)

0.51 ↑  
166

Lower Middle Income Country (*World Bank classification*)

Least Developed Country (*UN classification*)

**Trade figures (% of GDP)**

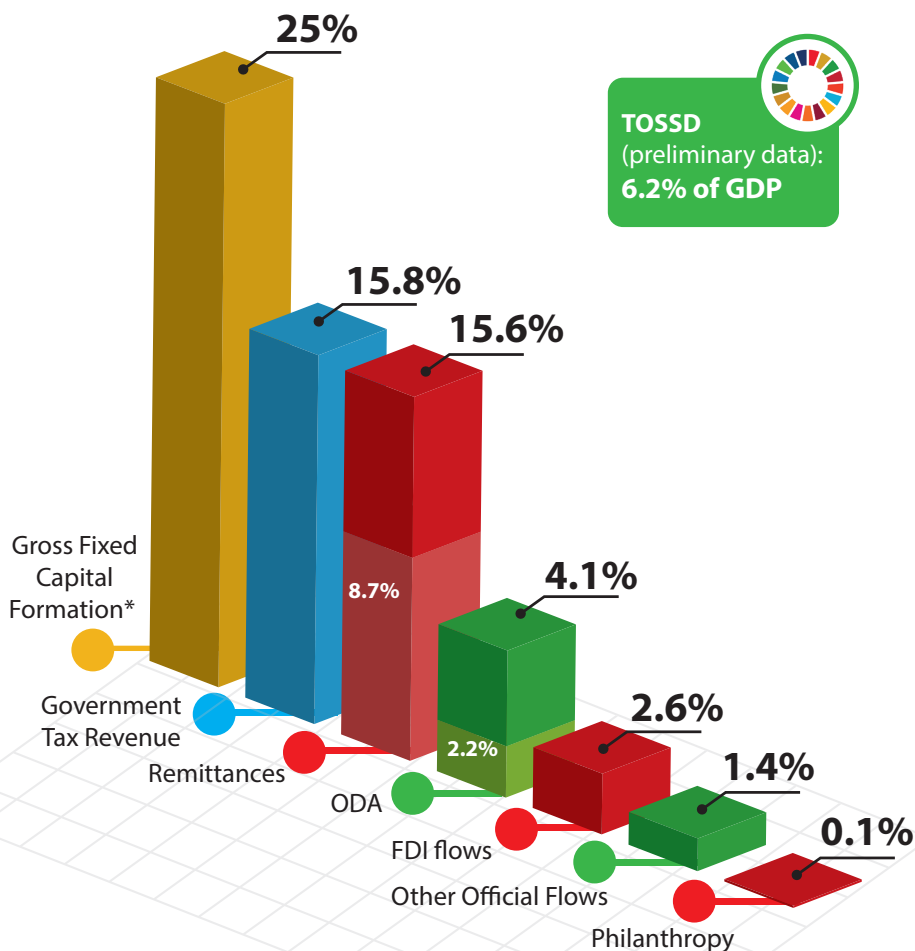
Imports of goods 28.3 ↑  
Exports of goods 15.5 ↑  
Imports of services 7.2 ↑  
Exports of services 6.2 ↑

**Ease of doing business index**

Index 59.3 ↑  
Ranking (of 190 countries) 123

\* Compared to average of previous years

## Financing for Development as % share of GDP



## External debt stock

**€10.6bn**

Multilaterals

30.6%

Private

3.6%

Non-Paris

56.5%

Bilateral

65.8%

Total Debt as share of GDP **51.7%**

Total Debt servicing as share of GDP **3%**



### For more information contact:

EuropeAid-FINANCING-FOR-SUSTAINABLE-DEVELOPMENT@ec.europa.eu

Exchange rate: \$1 = €0.8473  
(OECD exchange rate for 2018)

### Sources:

OECD DAC CRS, World Bank WDI  
UNDP, EDGAR, JRC, World Bank  
Remittances database, Eurostat  
and IMF External Debt Statistics

Note: EU/MS refers to the EU and Member States together

For more information on TOSSD: [www.tossd.org](http://www.tossd.org)

\*Measure of total investment in the domestic economy (overlap with FDI possible)

Paris refers to debts to the Paris Club of creditors (22 countries)

