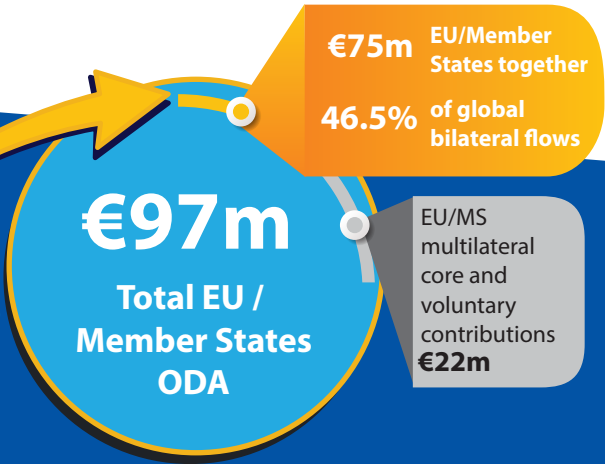
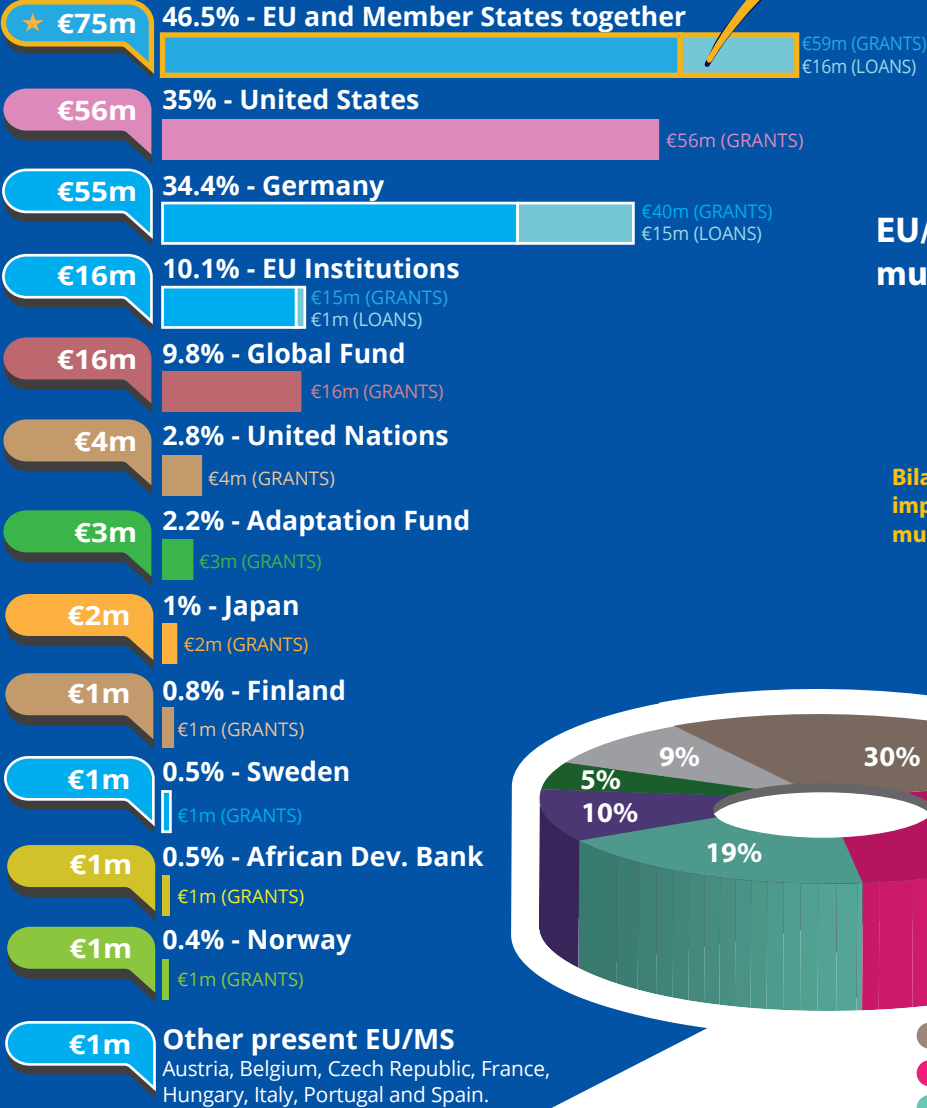
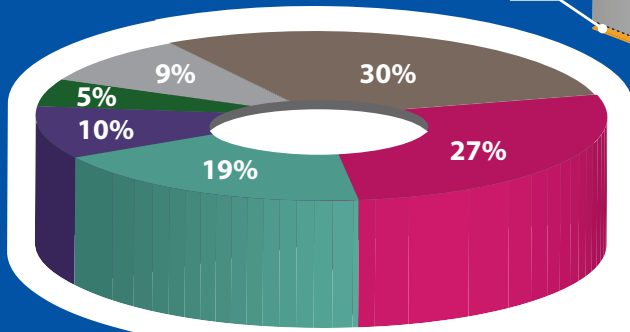
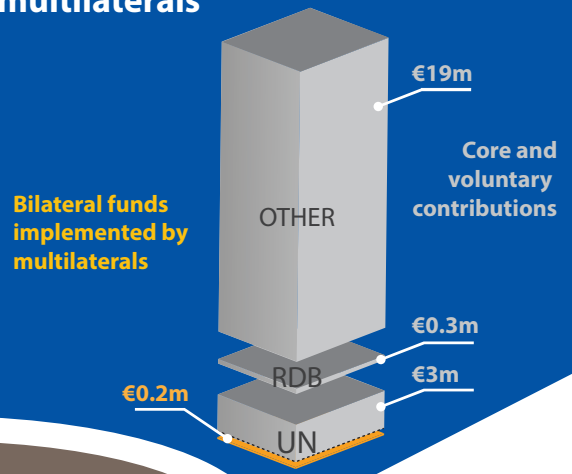




Namibia's partners in 2018*



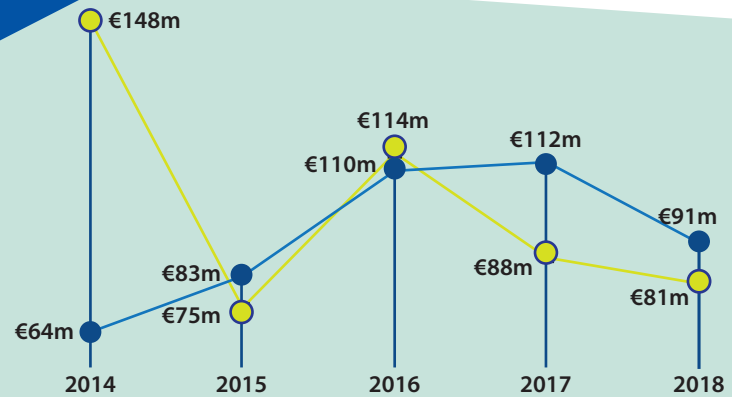
EU/Member States funds through multilaterals



The main sectors funded by the EU/Member States

- Transport & Storage
- Education
- Multi-Sector / Cross-Cutting
- Agriculture, Forestry, Fishing
- Government & Civil Society
- Other

*Based on ODA disbursements in the particular year.



EU/Member States ODA trends 2014-2018 (€)

- EU / Member States
- All other DAC providers

For more information contact:

EEAS JOINT PROGRAMMING:
joint-programming-support@eeas.europa.eu

EU AID EXPLORER:
https://euaidexplorer.ec.europa.eu

DEVCO JOINT PROGRAMMING:
devco-joint-programming-support@ec.europa.eu

NEAR JOINT PROGRAMMING
NEAR-JOINT-PROGRAMMING@ec.europa.eu

Sources:

OECD DAC CRS
IMF WEO 2018 Database

Exchange rate: \$1 = €0.8473
(OECD exchange rate for 2018)

JOINT PROGRAMMING TRACKER:

https://europa.eu/capacity4dev/joint-programming-tracker

Note: EU/MS refers to the EU and its Member States together.
Differences between figures for total EU/MS ODA and ODA trends are due to use of different OECD data sources (with higher level of granularity in 2018).
RDBs = Regional Development Banks.





Investing in Sustainable Development in Namibia



GDP €12.3 bn ↑

GDP per capita €5,025.7 ↑*
Fiscal position -1.9% ↑



Upper Middle Income Country (World Bank classification)



Population 2.45m ↑

Poverty head count ratio at national poverty line 17.4%
Multidimensional poverty 38%
GINI index 59.1

Human Development Index (UN)

Index 0.65 ↑
Ranking (of 189 countries) 130



Trade figures (% of GDP)

Imports of goods 39.6 ↓
Exports of goods 29 ↑
Imports of services 4.7 ↓
Exports of services 5.2 ↓

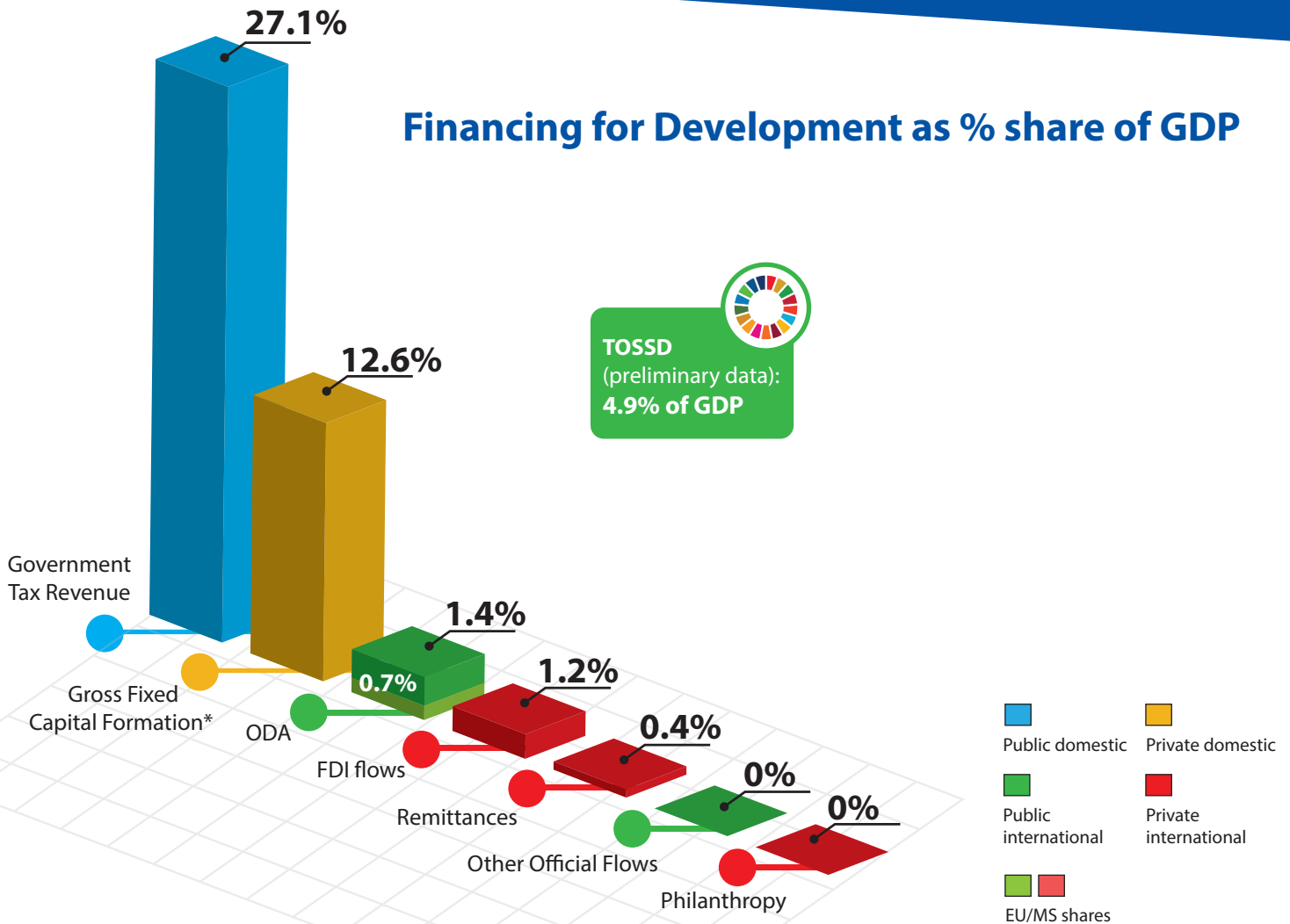
Ease of doing business index

Index 61.4 ↑
Ranking (of 190 countries) 104



* Compared to average of previous years

Financing for Development as % share of GDP



For more information contact:

EuropeAid-FINANCING-FOR-SUSTAINABLE-DEVELOPMENT@ec.europa.eu

Exchange rate: \$1 = €0.8473
(OECD exchange rate for 2018)

Sources:

OECD DAC CRS, World Bank WDI
UNDP, EDGAR, JRC, World Bank
Remittances database, Eurostat
and IMF External Debt Statistics

Note: EU/MS refers to the EU and Member States together

For more information on TOSSD: www.tossd.org

*Measure of total investment in the domestic economy (overlap with FDI possible)

Paris refers to debts to the Paris Club of creditors (22 countries)

