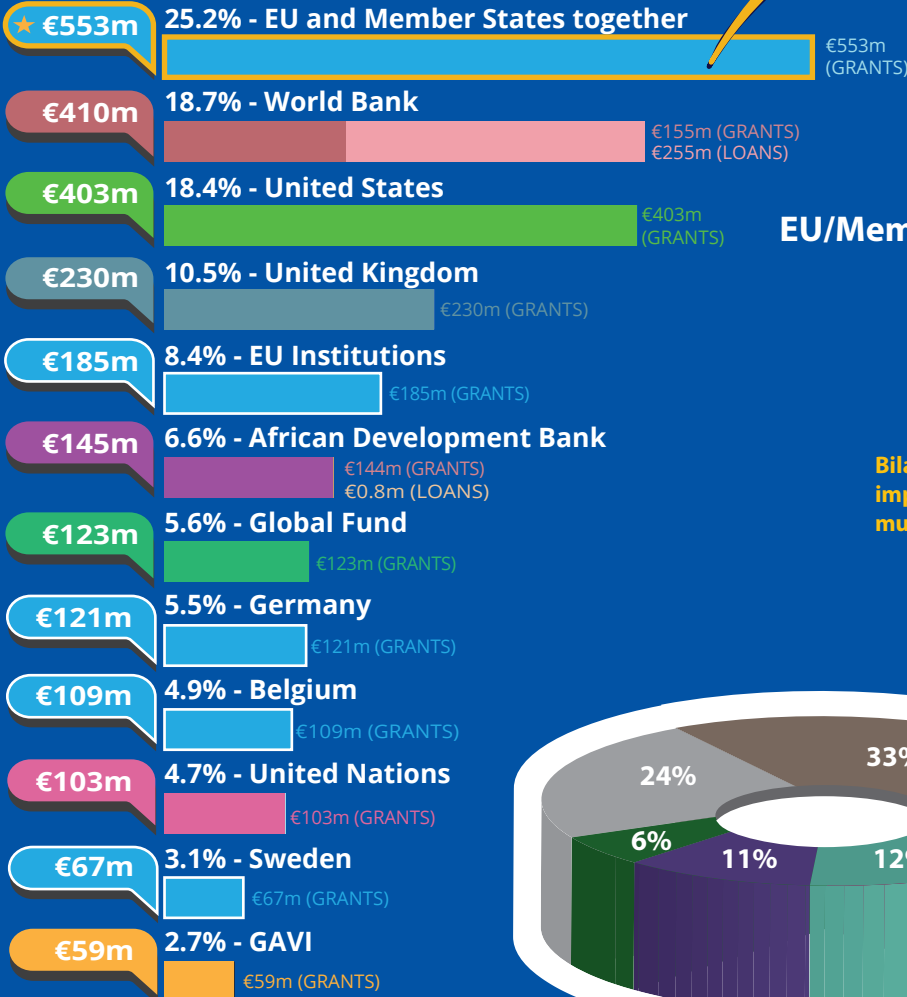




DRC's partners in 2018*

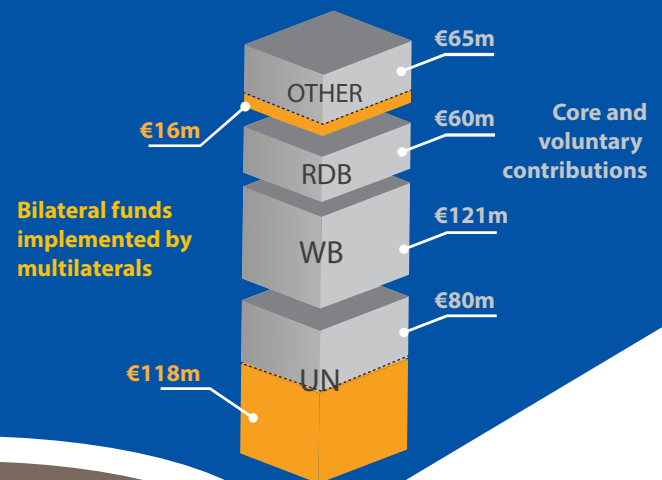


€880m
Total EU /
Member States
ODA

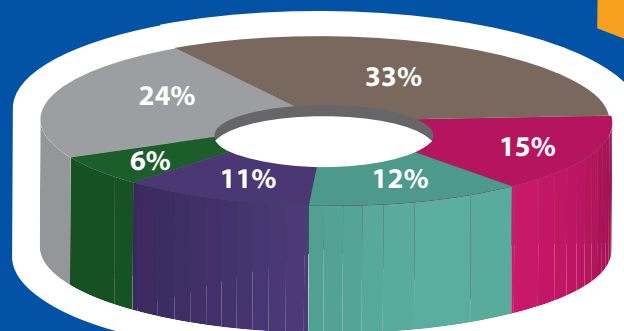
€553m EU/Member
States together
25.2% of global
bilateral flows

EU/MS
multilateral
core and
voluntary
contributions
€327m

EU/Member States funds through multilaterals



Bilateral funds
implemented by
multilaterals

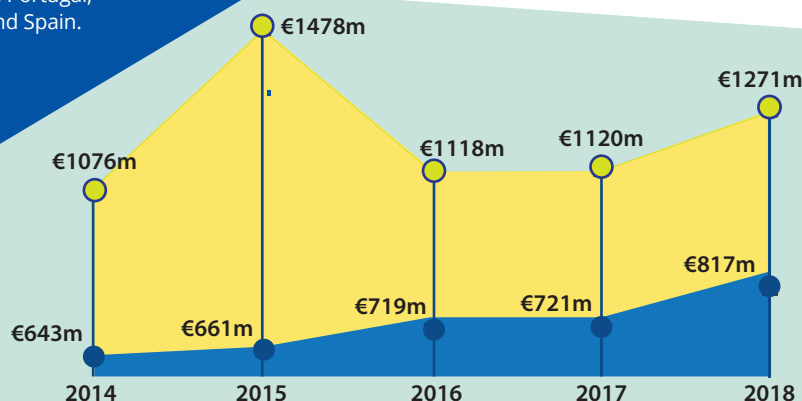


The main sectors funded by the EU/Member States

- Emergency Response
- Government & Civil Society
- Health
- Multi-Sector / Cross-Cutting
- Education
- Other

€72m **Other present EU/MS**
Austria, Finland, France, Greece,
Hungary, Ireland, Italy, Luxembourg
Netherlands, Poland, Portugal,
Romania, Slovenia and Spain.

*Based on ODA disbursements
in the particular year.



EU/Member States ODA trends 2014-2018 (€)

■ EU / Member States
■ All other DAC providers

For more information contact:

EEAS JOINT PROGRAMMING:
joint-programming-support@eeas.europa.eu

EU AID EXPLORER:
<https://euaidexplorer.ec.europa.eu>

DEVCO JOINT PROGRAMMING:
devco-joint-programming-support@ec.europa.eu

NEAR JOINT PROGRAMMING
NEAR-JOINT-PROGRAMMING@ec.europa.eu

Sources:

OECD DAC CRS
IMF WEO 2018 Database

Exchange rate: \$1 = €0.8473
(OECD exchange rate for 2018)

JOINT PROGRAMMING TRACKER:

<https://europa.eu/capacity4dev/joint-programming-tracker>

Note: EU/MS refers to the EU and its Member States together.

Differences between figures for total EU/MS ODA and ODA trends are due to use of different OECD data sources (with higher level of granularity in 2018).

RDBs = Regional Development Banks.





Investing in Sustainable Development in Democratic Republic of the Congo



GDP €40bn ↑

GDP per capita

€ 476 ↑ *



Population 84.07m ↑

Multidimensional poverty

74%

Human Development Index (UN)

Index

Ranking (of 189 countries)

0.46 ↑
179



Low Income Country (*World Bank classification*)

Least Developed Country (*UN classification*)

Fragile State Country (*World Bank classification*)



Trade figures (% of GDP)

Imports of goods 31.7 ↓

Exports of goods 33.8 ↑

Imports of services 5.9 ↓

Exports of services 0.2 ↓

Ease of doing business index

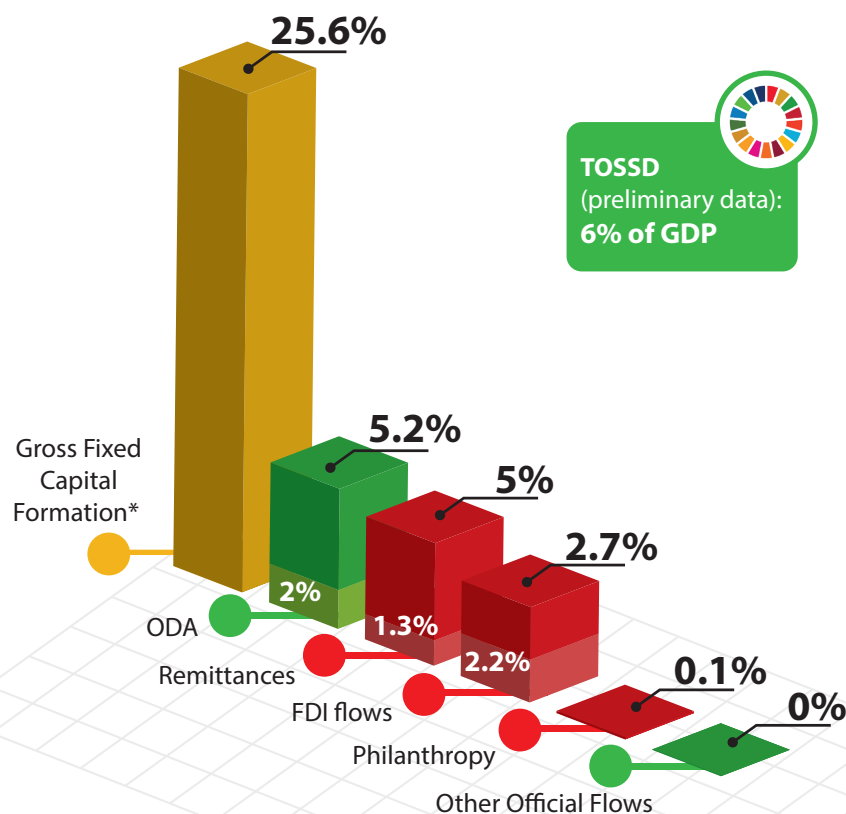
Index 36.2 ↑

Ranking
(of 190 countries) 183



* Compared to average of previous years

Financing for Development as % share of GDP



External debt stock

€4.2bn

Multilaterals

36.5%

Private

0%

Non-Paris

62.5%

Paris

1%

Bilateral

Total Debt as share of GDP **10.5%**

Total Debt servicing
as share of GDP **0.8%**



For more information contact:

EuropeAid-FINANCING-FOR-SUSTAINABLE-DEVELOPMENT@ec.europa.eu

Exchange rate: \$1 = €0.8473
(OECD exchange rate for 2018)

Sources:

OECD DAC CRS, World Bank WDI
UNDP, EDGAR, JRC, World Bank
Remittances database, Eurostat
and IMF External Debt Statistics

Note: EU/MS refers to the EU and Member States together

For more information on TOSSD: www.tossd.org

*Measure of total investment in the domestic economy (overlap with FDI possible)

Paris refers to debts to the Paris Club of creditors (22 countries)

