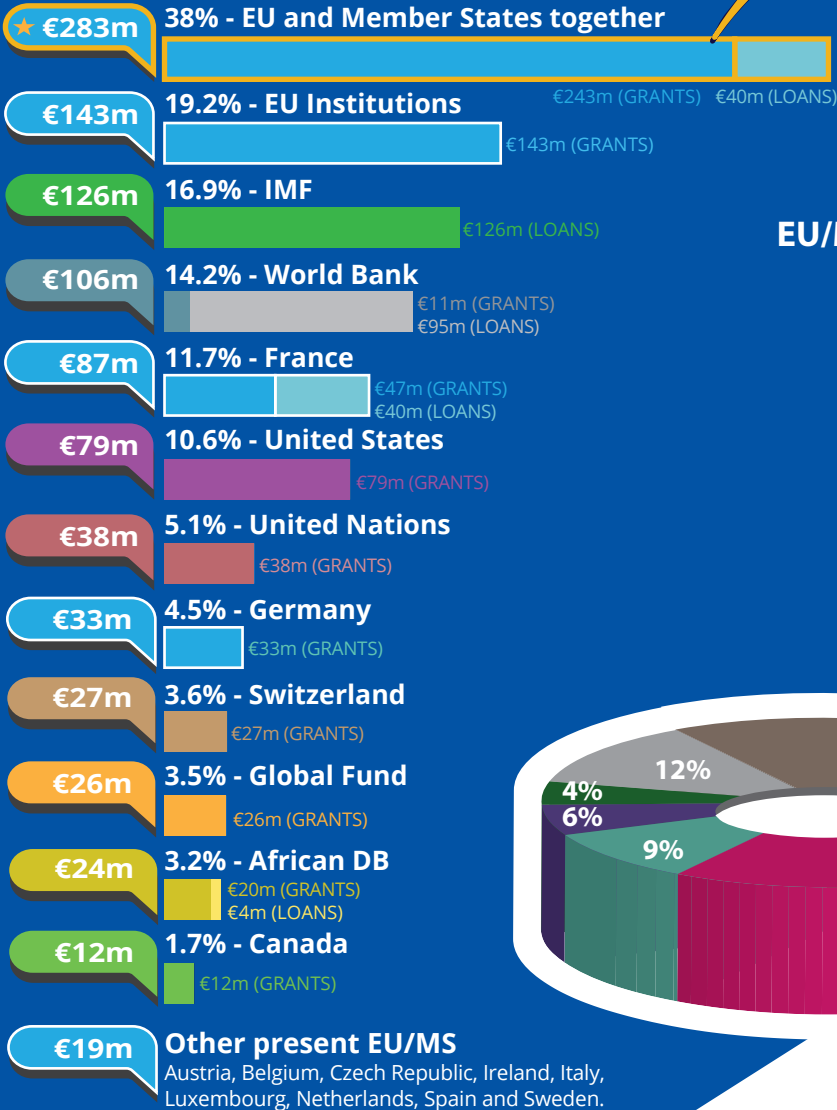




Chad's partners in 2018*



€376m

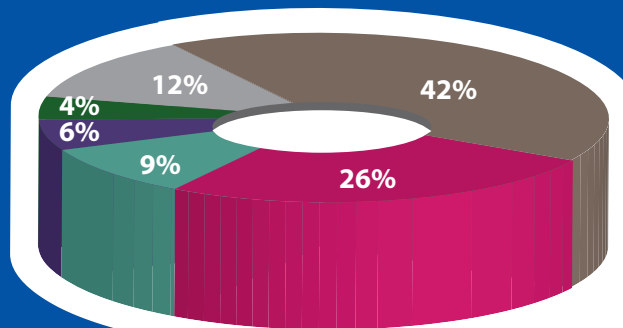
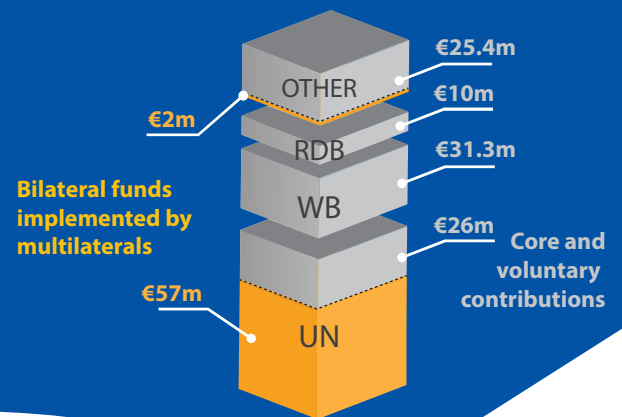
Total EU /
Member States
ODA

€283m EU/Member
States together

38% of global
bilateral flows

EU/MS
multilateral
core and
voluntary
contributions
€93m

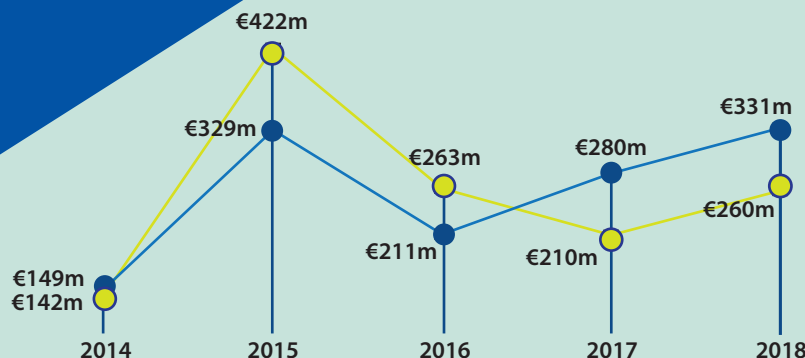
EU/Member States funds through multilaterals



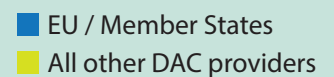
The main sectors funded by the EU/Member States



*Based on ODA disbursements
in the particular year.



EU/Member States ODA trends 2014-2018 (€)



For more information contact:

EEAS JOINT PROGRAMMING:
joint-programming-support@eeas.europa.eu

EU AID EXPLORER:
https://euaidexplorer.ec.europa.eu

DEVCO JOINT PROGRAMMING:
devco-joint-programming-support@ec.europa.eu

NEAR JOINT PROGRAMMING
NEAR-JOINT-PROGRAMMING@ec.europa.eu

Sources:

OECD DAC CRS
IMF WEO 2018 Database

Exchange rate: \$1 = €0.8473
(OECD exchange rate for 2018)

JOINT PROGRAMMING TRACKER:

<https://europa.eu/capacity4dev/joint-programming-tracker>

Note: EU/MS refers to the EU and its Member States together.

Differences between figures for total EU/MS ODA and ODA trends are due to use of different OECD data sources (with higher level of granularity in 2018).

RDBs = Regional Development Banks.





Investing in Sustainable Development in Chad



GDP €9.6 bn ↓

GDP per capita

€617.1 ↓ *



Population 15.48m ↑

Multidimensional poverty

85.7%

Human Development Index (UN)

Index

Ranking (of 189 countries)

0.40 ↑
187



Low Income Country (*World Bank classification*)

Least Developed Country (*UN classification*)

Fragile State (*World Bank classification*)



Ease of doing business index

Index

36.9 ↑

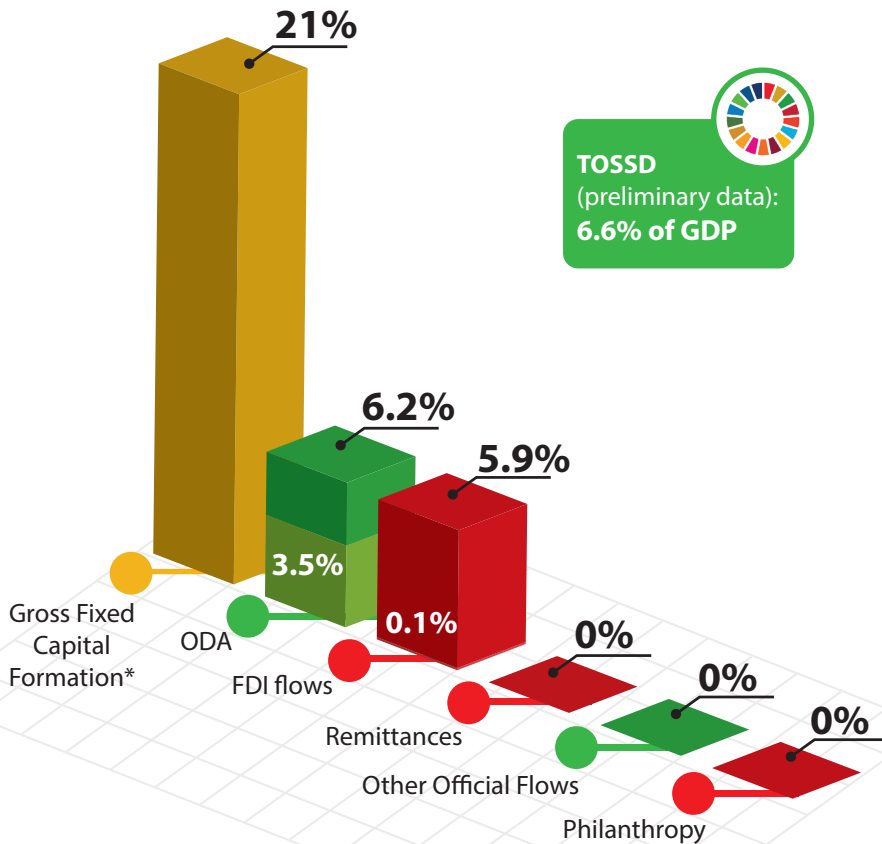
Ranking

(of 190 countries) 182

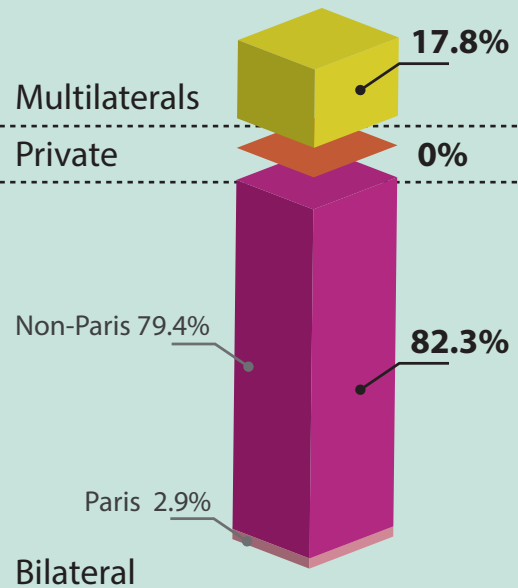


* Compared to average of previous years

Financing for Development as % share of GDP



External debt stock €2.7bn



Total Debt as share of GDP 28.8%

Total Debt servicing as share of GDP 1.5%



For more information contact:

EuropeAid-FINANCING-FOR-SUSTAINABLE-DEVELOPMENT@ec.europa.eu

Exchange rate: \$1 = €0.8473
(OECD exchange rate for 2018)

Sources:

OECD DAC CRS, World Bank WDI
UNDP, EDGAR, JRC, World Bank
Remittances database, Eurostat
and IMF External Debt Statistics

Note: EU/MS refers to the EU and Member States together

For more information on TOSSD: www.tossd.org

*Measure of total investment in the domestic economy (overlap with FDI possible)

Paris refers to debts to the Paris Club of creditors (22 countries)

