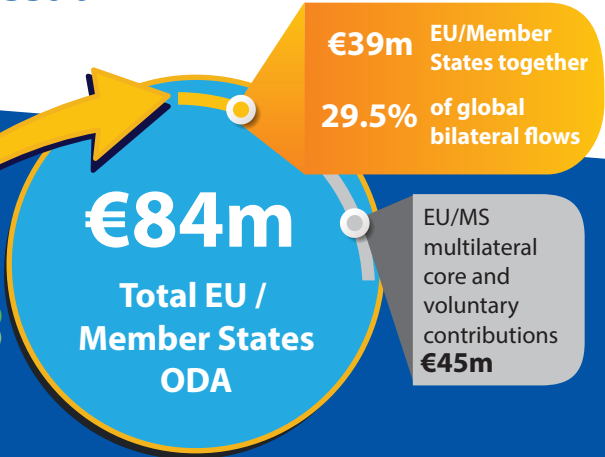
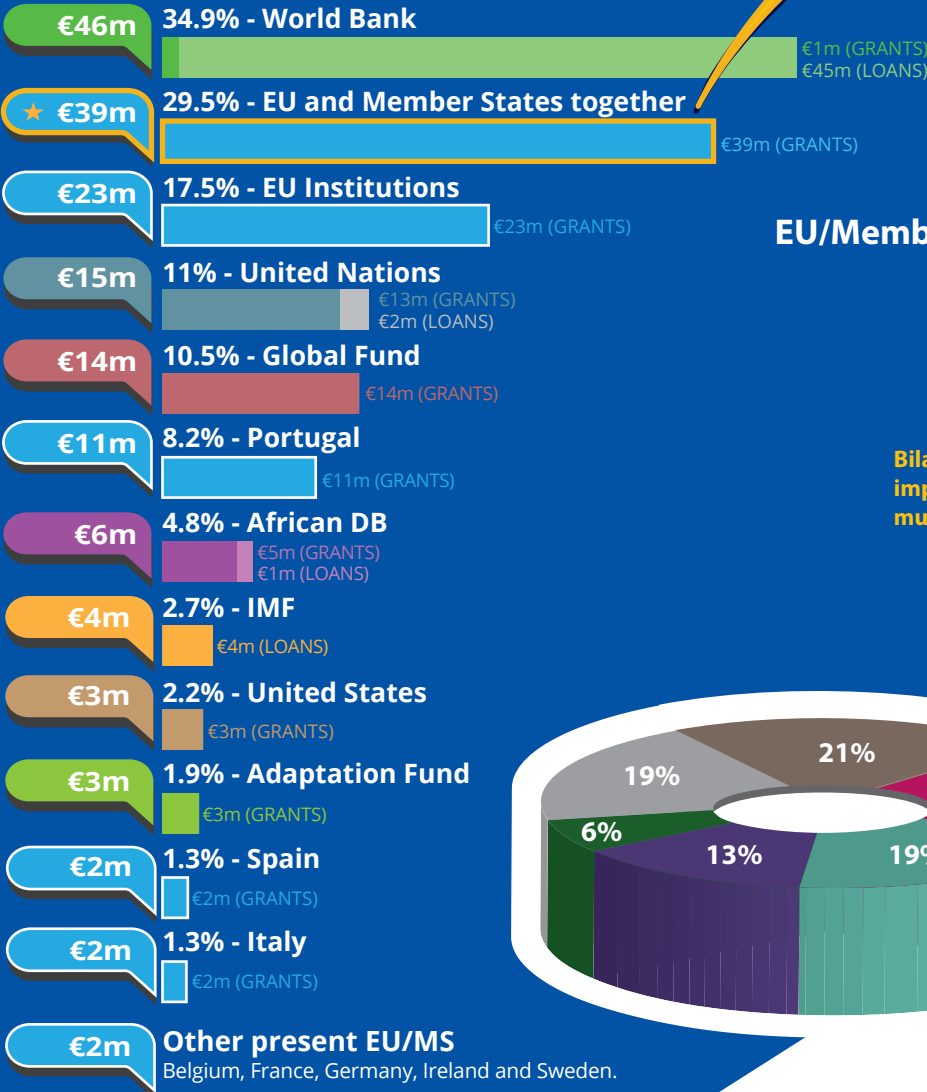
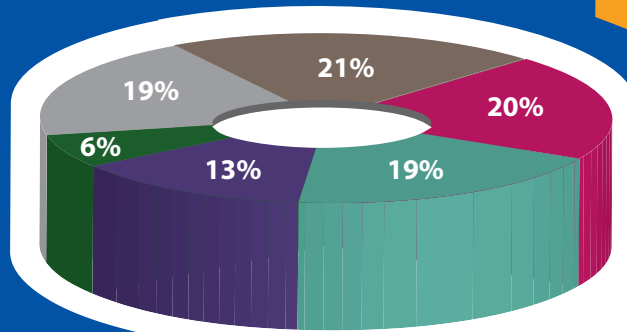
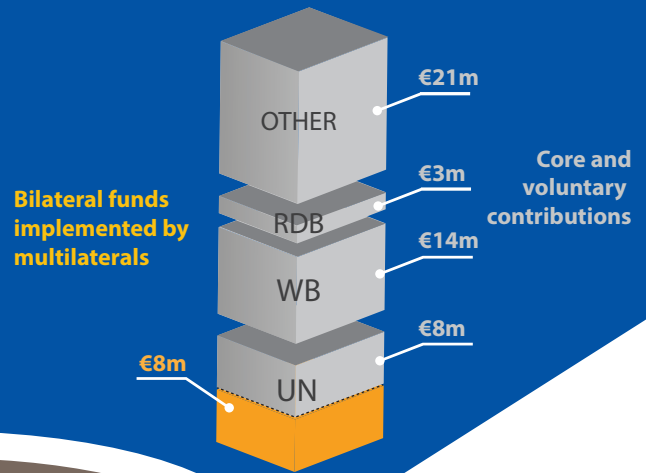




## Guinea-Bissau's partners in 2018\*



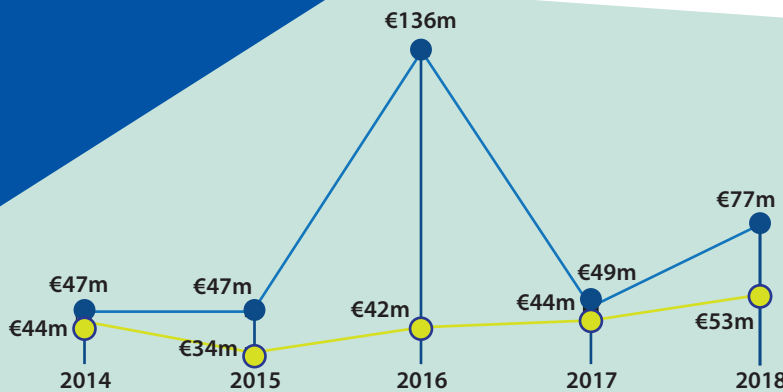
### EU/Member States funds through multilaterals



### The main sectors funded by the EU/Member States

- Education
- Government & Civil Society
- Health
- Agriculture, Forestry, Fishing
- Transport & Storage
- Other

\*Based on ODA disbursements in the particular year.



### EU/Member States ODA trends 2014-2018 (€)

- EU / Member States
- All other DAC providers

#### For more information contact:

EEAS JOINT PROGRAMMING:  
joint-programming-support@eeas.europa.eu

EU AID EXPLORER:  
https://euaidexplorer.ec.europa.eu

DEVCO JOINT PROGRAMMING:  
devco-joint-programming-support@ec.europa.eu

NEAR JOINT PROGRAMMING  
NEAR-JOINT-PROGRAMMING@ec.europa.eu

#### Sources:

OECD DAC CRS  
IMF WEO 2018 Database

Exchange rate: \$1 = €0.8473  
(OECD exchange rate for 2018)

#### JOINT PROGRAMMING TRACKER:

<https://europa.eu/capacity4dev/joint-programming-tracker>

Note: EU/MS refers to the EU and its Member States together.

Differences between figures for total EU/MS ODA and ODA trends are due to use of different OECD data sources (with higher level of granularity in 2018). RDBs = Regional Development Banks.





# Investing in Sustainable Development in Guinea-Bissau



## GDP €1.2 bn ↑

GDP per capita €659.2 ↑ \*

Fiscal position -1.6% ↑



Low Income Country (World Bank classification)  
Least Developed Country (UN classification)  
Fragile State Country (World Bank classification)



## Population 1.87m ↑

Multidimensional poverty 67.3%

## Human Development Index (UN)

Index 0.46 ↑

Ranking (of 189 countries) 178



## Trade figures (% of GDP)

Imports of goods 20.1 ↑

Exports of goods 23.3 ↑

Imports of services 11.4 ↑

Exports of services 2.8 ↓

## Ease of doing business index

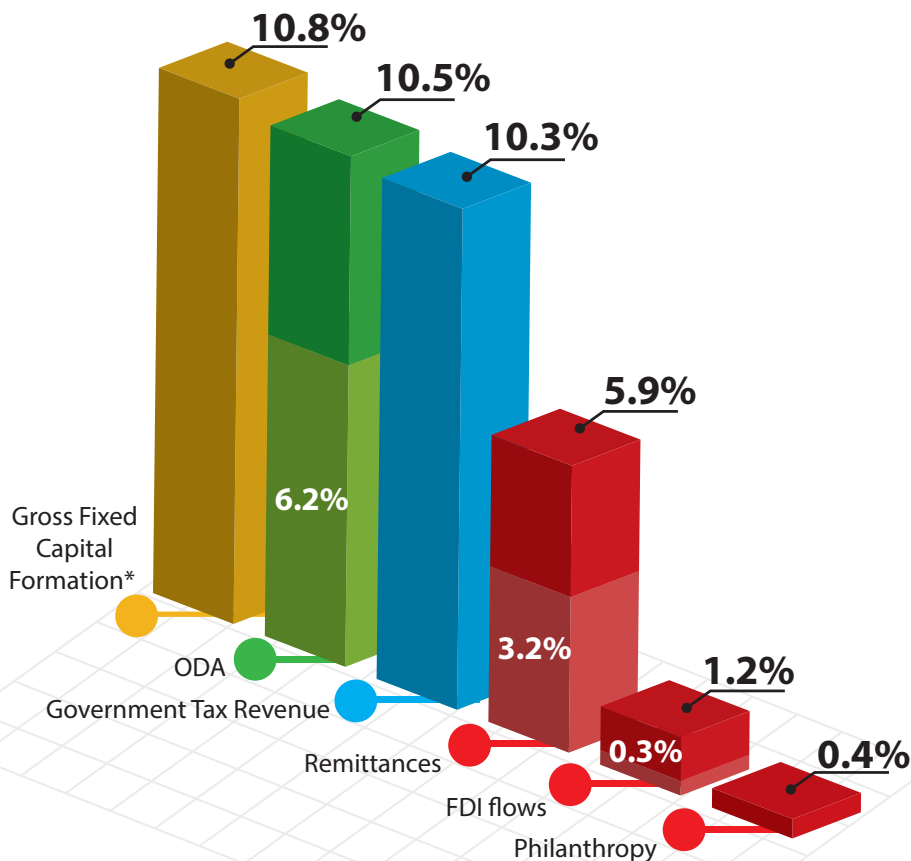
Index 43.2 ↑

Ranking (of 190 countries) 174



\* Compared to average of previous years

## Financing for Development as % share of GDP



## External debt stock

€0.4bn

Multilaterals

50.6%

Private

0%

Bilateral

49.4%

Non-Paris 31.8%

Paris 17.6%

Total Debt as share of GDP 28.9%

Total Debt servicing as share of GDP 0.6%



## For more information contact:

EuropeAid-FINANCING-FOR-SUSTAINABLE-DEVELOPMENT@ec.europa.eu

Exchange rate: \$1 = €0.8473  
(OECD exchange rate for 2018)

## Sources:

OECD DAC CRS, World Bank WDI  
UNDP, EDGAR, JRC, World Bank  
Remittances database, Eurostat  
and IMF External Debt Statistics

Note: EU/MS refers to the EU and Member States together

For more information on TOSSD: [www.tosssd.org](http://www.tosssd.org)

\*Measure of total investment in the domestic economy (overlap with FDI possible)

Paris refers to debts to the Paris Club of creditors (22 countries)

