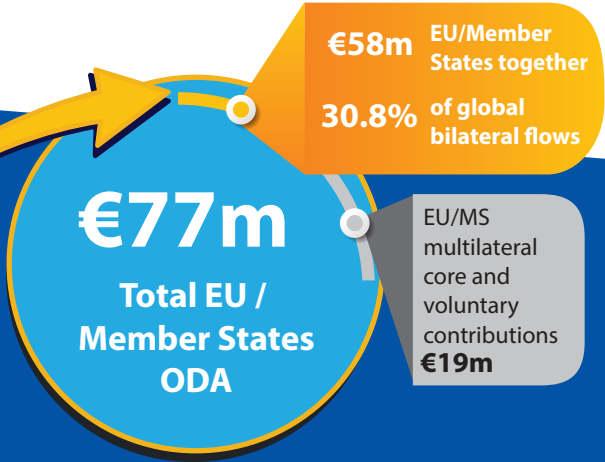
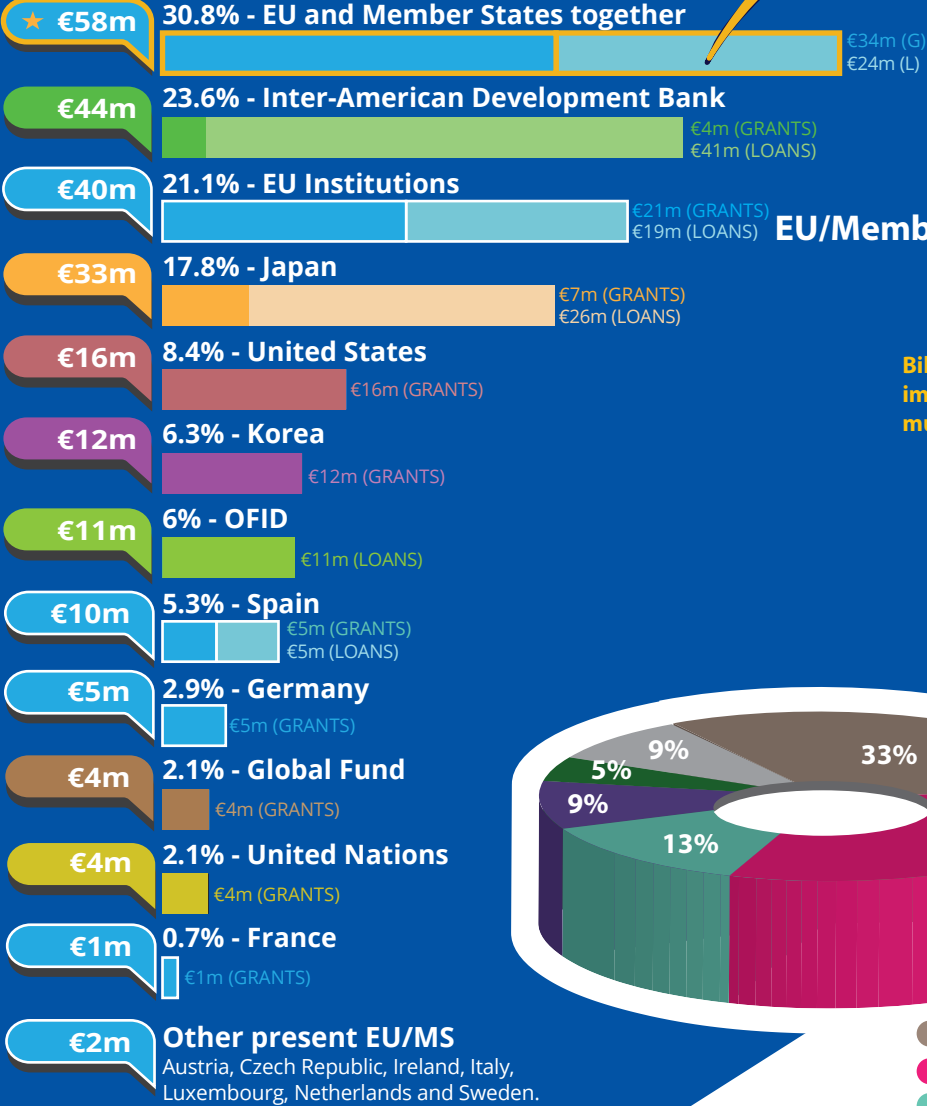
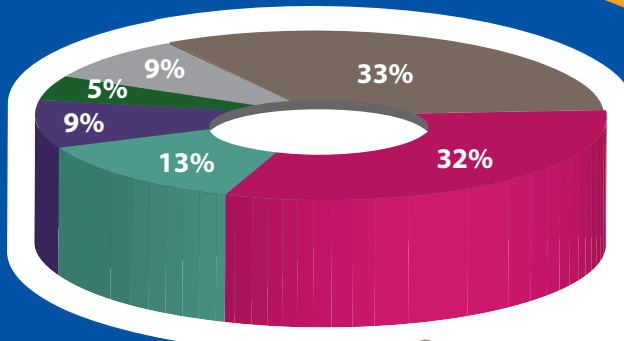
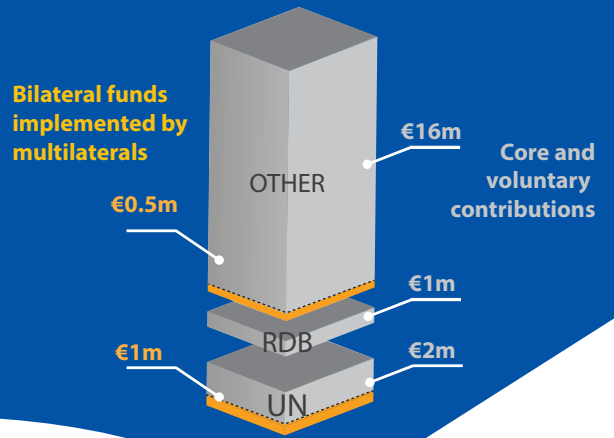




## Paraguay's partners in 2018\*



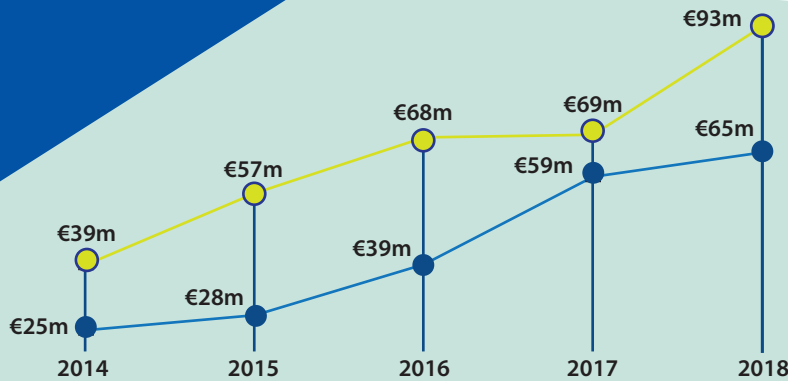
### EU/Member States funds through multilaterals



### The main sectors funded by the EU/Member States

- Energy
- Education
- Government & Civil Society
- Transport & Storage
- Agriculture, Forestry, Fishing
- Other

\*Based on ODA disbursements in the particular year.



### EU/Member States ODA trends 2014-2018 (€)

- EU / Member States
- All other DAC providers

#### For more information contact:

EEAS JOINT PROGRAMMING:  
joint-programming-support@eeas.europa.eu

EU AID EXPLORER:  
https://euaidexplorer.ec.europa.eu

DEVCO JOINT PROGRAMMING:  
devco-joint-programming-support@ec.europa.eu

NEAR JOINT PROGRAMMING  
NEAR-JOINT-PROGRAMMING@ec.europa.eu

#### Sources:

OECD DAC CRS  
IMF WEO 2018 Database

Exchange rate: \$1 = €0.8473  
(OECD exchange rate for 2018)

#### JOINT PROGRAMMING TRACKER:

<https://europa.eu/capacity4dev/joint-programming-tracker>

Note: EU/MS refers to the EU and its Member States together.

Differences between figures for total EU/MS ODA and ODA trends are due to use of different OECD data sources (with higher level of granularity in 2018).  
RDBs = Regional Development Banks.





# Investing in Sustainable Development in Paraguay



## GDP €34.3 bn ↑

GDP per capita €4,932.8 ↑\*  
Fiscal position -0.4% ↓



## Population 6.96m ↑

Poverty head count ratio at national poverty line 26.4% ↓  
Multidimensional poverty 4.5% ↑  
GINI index 48.8 ↑



## Human Development Index (UN)

Index 0.72 ↑  
Ranking (of 189 countries) 98

Upper Middle Income Country (World Bank classification)



## Trade figures (% of GDP)

Imports of goods 31.1 ↑  
Exports of goods 32.8 ↑  
Imports of services 3.2 ↑  
Exports of services 2.9 ↑

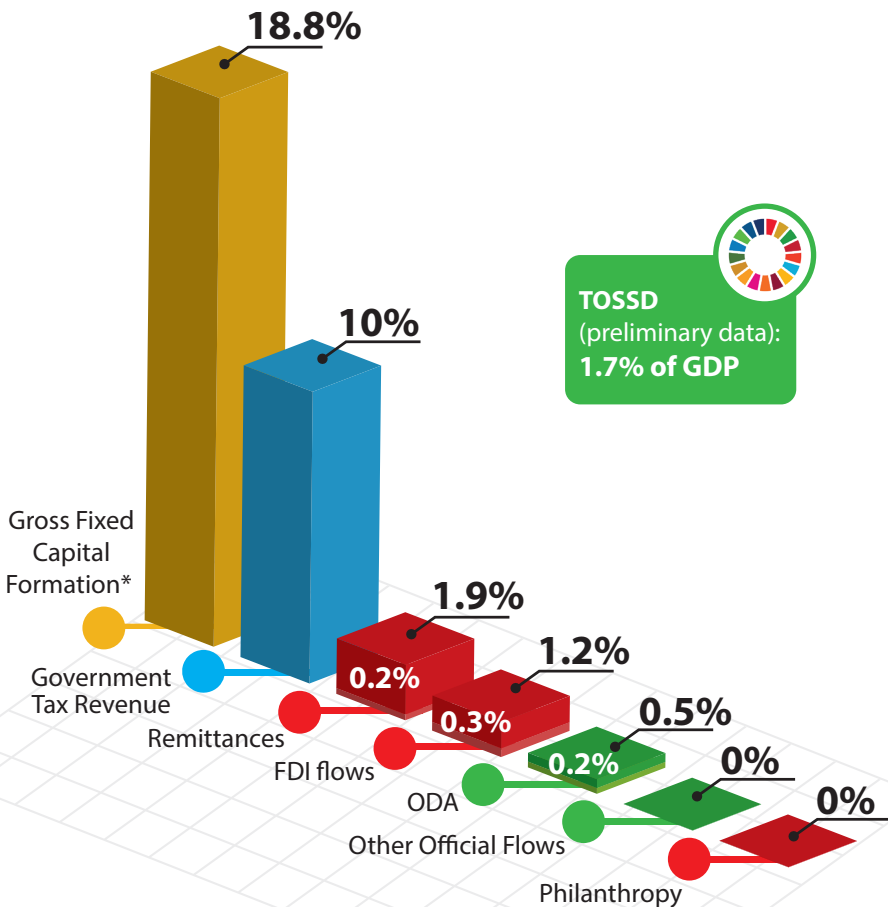
## Ease of doing business index

Index 59.1 ↑  
Ranking (of 190 countries) 125



\* Compared to average of previous years

## Financing for Development as % share of GDP

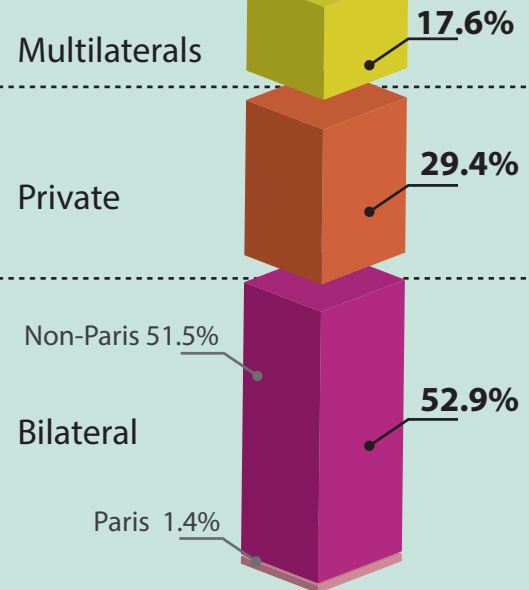


**TOSSD**  
(preliminary data):  
**1.7% of GDP**



## External debt stock

€13.4bn



Total Debt as share of GDP **39%**

Total Debt servicing as share of GDP **5.6%**



### For more information contact:

EuropeAid-FINANCING-FOR-SUSTAINABLE-DEVELOPMENT@ec.europa.eu

Exchange rate: \$1 = €0.8473  
(OECD exchange rate for 2018)

### Sources:

OECD DAC CRS, World Bank WDI  
UNDP, EDGAR, JRC, World Bank  
Remittances database, Eurostat  
and IMF External Debt Statistics

Note: EU/MS refers to the EU and Member States together

For more information on TOSSD: [www.tossd.org](http://www.tossd.org)

\*Measure of total investment in the domestic economy (overlap with FDI possible)

Paris refers to debts to the Paris Club of creditors (22 countries)

