

Addressing biodiversity in EU Cooperation

9 December 2020



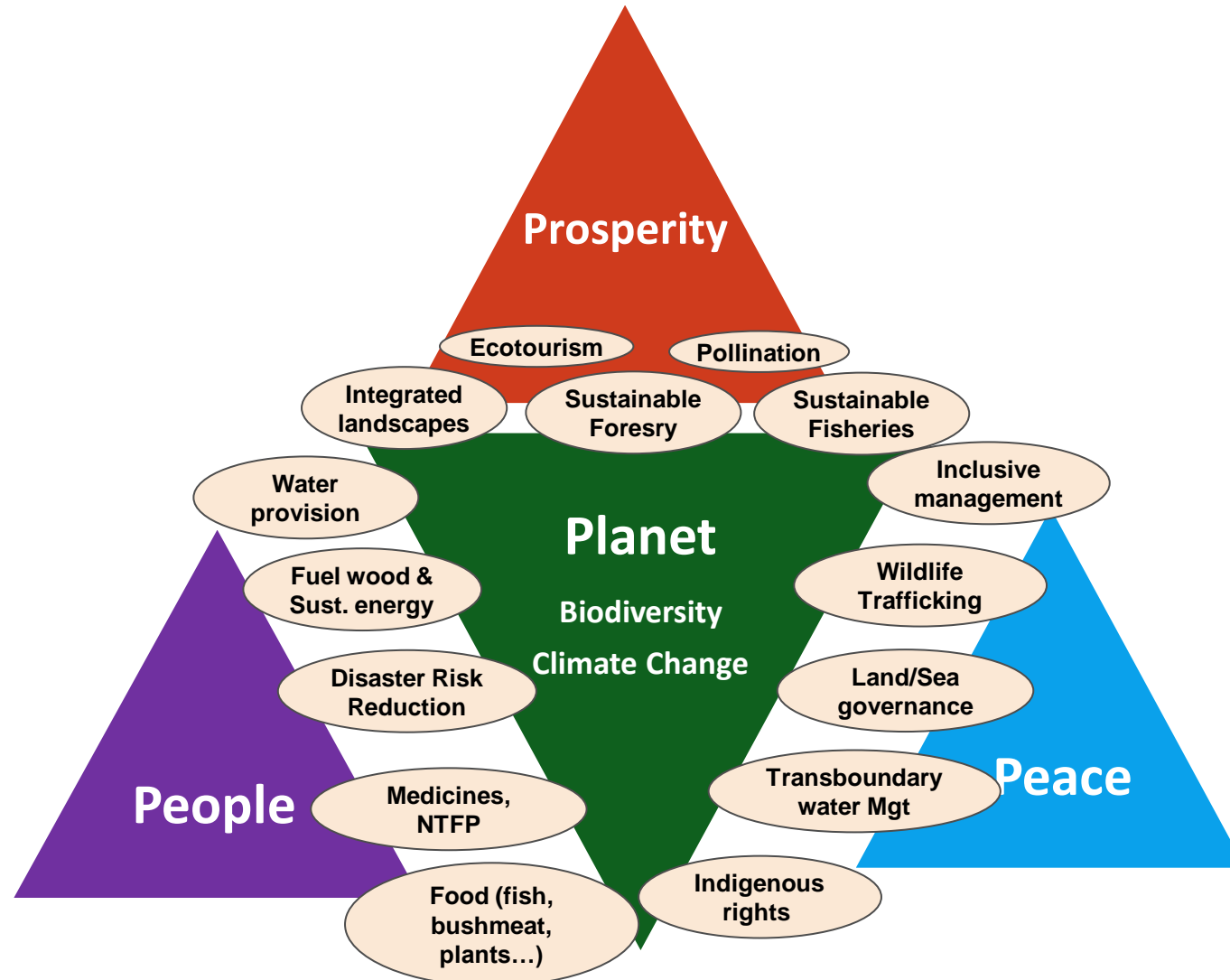
Outline



- **Part 1.** Biodiversity policy and programming in external action
- **Part 2.** Protection, sustainable use and restoration of high biodiversity-value areas
Integrated Landscape and Seascape Management
- **Part 3.** Global Programmes



Why biodiversity matters in development?



Part 1. Biodiversity policy and programming in external action

EU Biodiversity Strategy 2020-30

Biodiversity an important external component of the Green Deal



Trade Policy to support ecological transition

- Biodiversity provisions of FTAs
 - Wildlife trafficking
- Deforestation-free commodity chains



International Ocean Governance

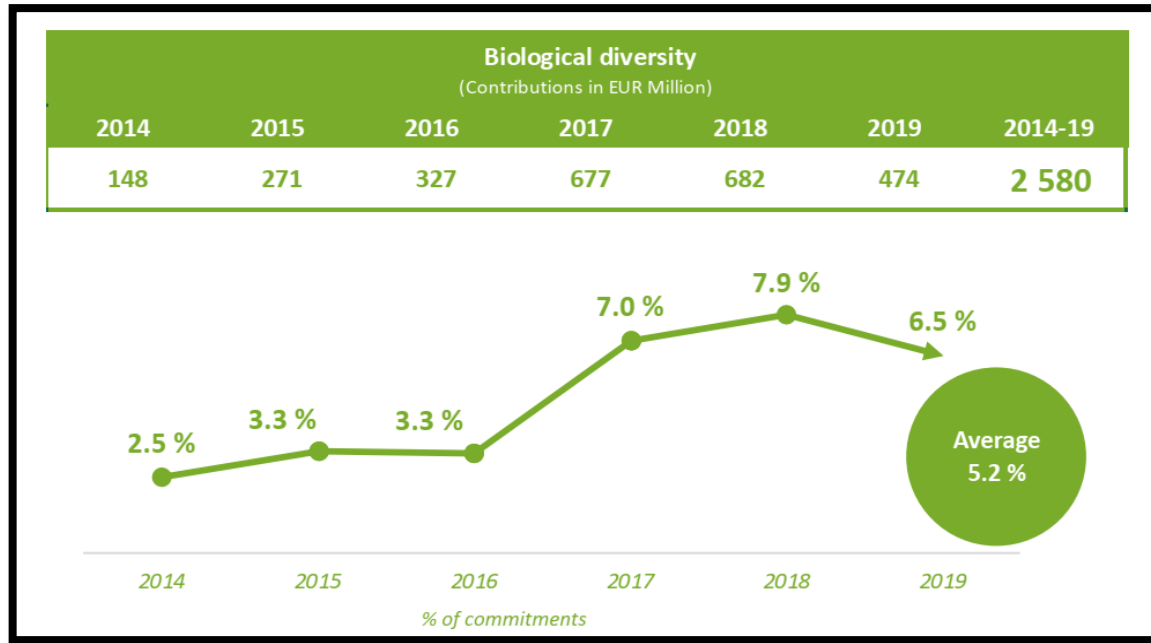
- SIDS biodiversity
 - IUU fishing



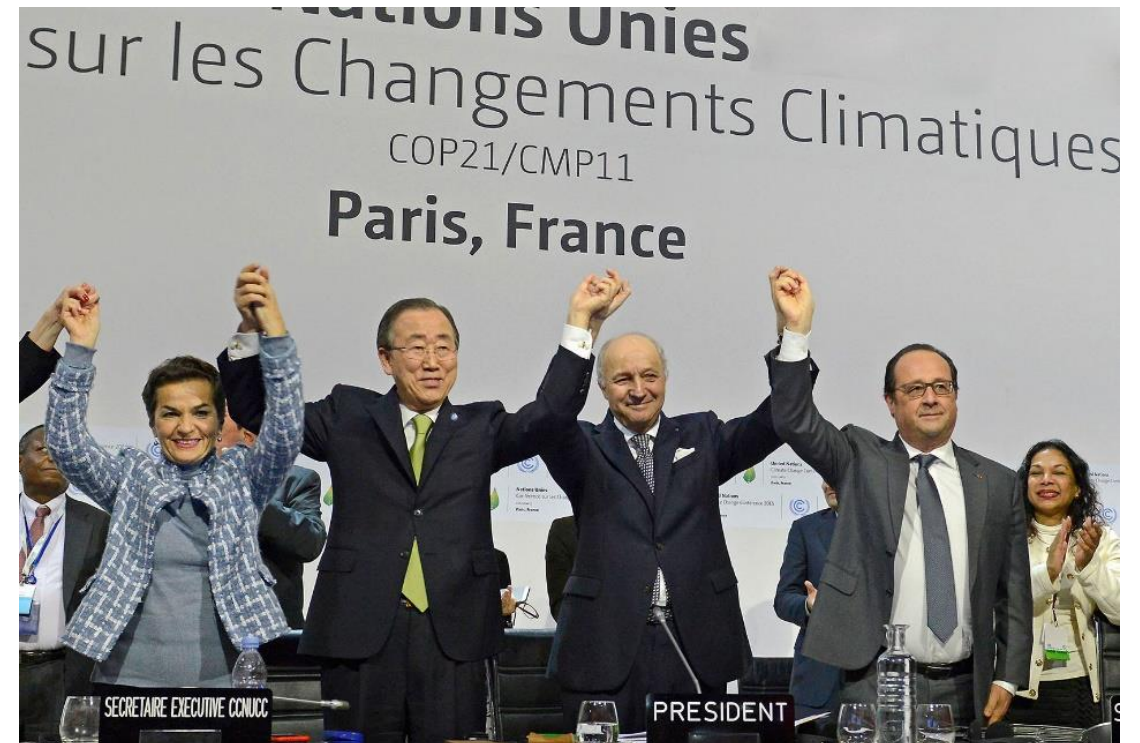
International Cooperation

- Conservation and sustainable use
- Mainstreaming & policy coherence
- Human Rights, gender, indigenous people, conflict sensitivity
- Awareness raising

EU's CBD Commitments



Hyderabad COP-CBD 2012 commitments on course, but next MFF new target... 7,5% biodiversity



Kunming 2021 – a new “Paris moment” ?

DEVCO policy documents on biodiversity



- The “Larger than...” series
 - Key Landscapes for Conservation
 - Wildlife trafficking
 - Sustainable production
 - Governance issues
 - Widely endorsed
- Other studies
 - Nexus security- wildlife conservation in Africa
 - Impact of COVID on ecotourism

New Programming Phase (2021 – 2027)

#TeamEurope

National level

Team Europe Initiatives discussed with MS at country level

Bulk of next programmes

Programming:

± Nov 2020 to March 2021

Regional level

Jointly done with HQ and EU delegations

Global level

Limited programs that cannot be geographised

Team Europe Initiatives: **Wildlife (trafficking, management, conflict, bushmeat)**



3 Mainstreams of activities



Support the **protection, sustainable use and restoration** of high biodiversity value areas



Tackle **wildlife and timber trafficking** and reduce pressure on wildlife and forests



Integrate biodiversity in key sectors (agriculture, fisheries, energy, cities, infra, mines...)

KNOWLEDGE

Research, capacity-building, information systems

HUMAN RIGHTS

Community-based, indigenous, gender, youth...

Co-benefits of biodiversity into other sector interventions



« Amazonia Joven – Sustainable corridors for **peace**, led by youth » - COLOMBIA



“**Climate** smart development model in transboundary areas”- PARAGUAY, BRAZIL, BOLIVIA



“Strengthening **Indigenous governance** and livelihoods in Chayu Nain Reserve” - PERU



« **Water** as a connector for resilient landscapes » - BOLIVIA

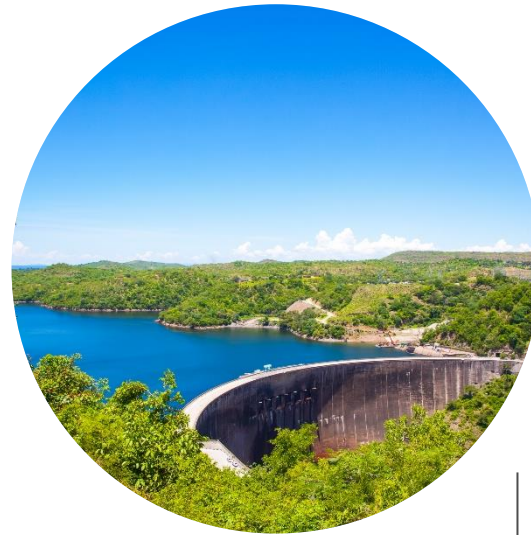
Mainstreaming of biodiversity into other sector interventions



Agriculture



Infrastructure

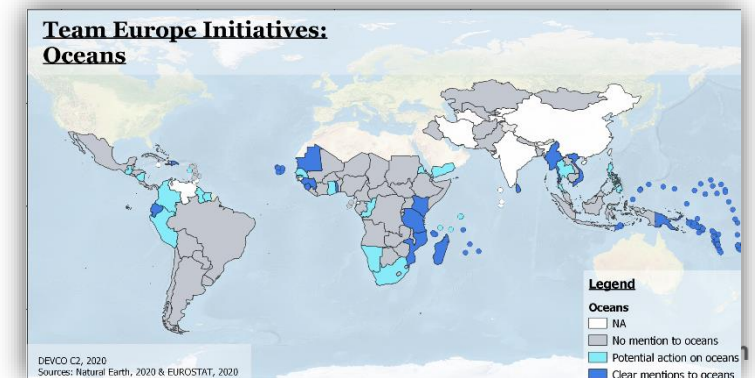
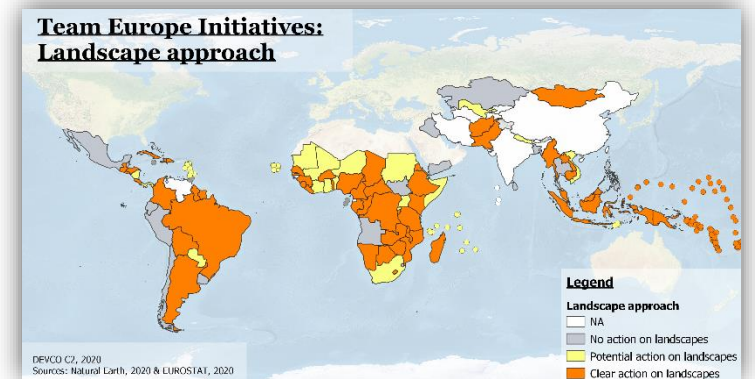
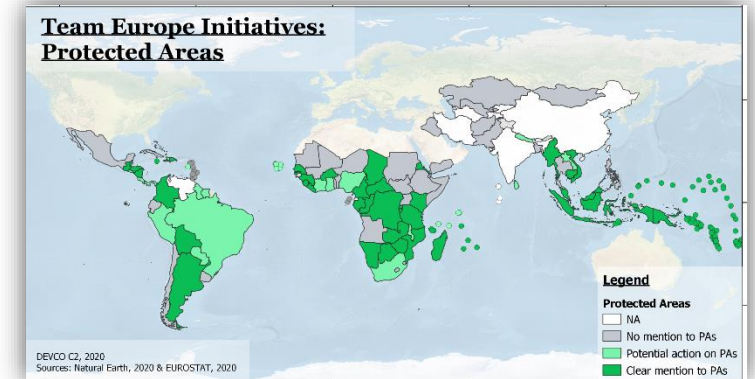
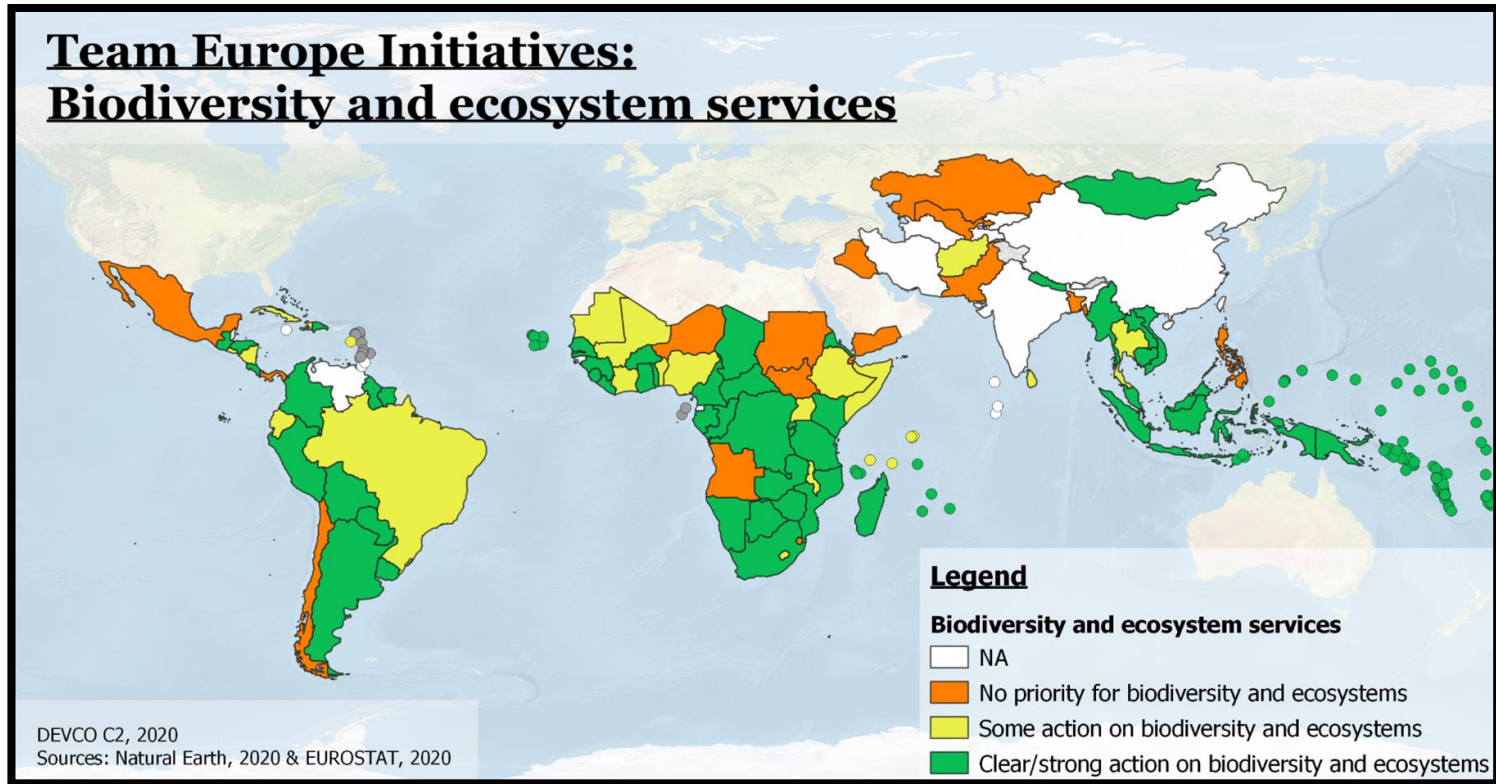


Energy



Industry

Strong European alignment



#TeamEurope

Part 2. Integrated landscape and seascape management



Integrated landscape and seascape management

- **Natural / human landscapes with multiple objectives:** biodiversity, climate change, food provision, land, water regulation, livelihood, conflict
- **Geographic area and approach to the sustainable management of human and natural resources**
- **All the uses and values:** forests, farms, protected areas, rivers, mines, towns...
- **Working with** partner countries, regional and local authorities, local communities, national and local civil society, private sector, Member States, other EU partners
- **Key enabling conditions:** Security of land tenure and user rights, Coordinated cross-sectoral planning and programming, Inclusive governance, multi-sectoral monitoring



Yangambi Landscape, DRC



Community conservancies Northern Rangelands Trust



<https://www.nrt-kenya.org/>

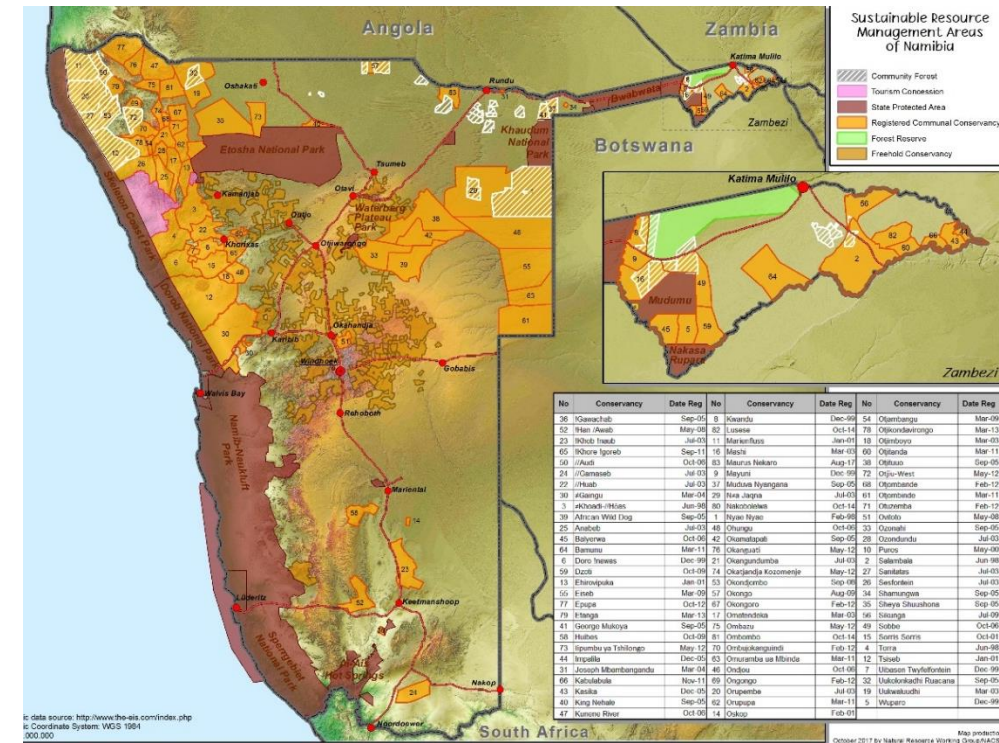
- > 4.4 million hectares & >400.000 beneficiaries
- Peace – Livelihoods – Environment
- Grazing and fire management – largest Soil Carbon project in the world
- Co-existing with wildlife



Communal Wildlife Conservancies Namibia

<http://www.nacso.org.na/>

- Pioneering legal framework delegating rights and responsibilities
- 47% land area under conservancies
- Model for economic survival in harsh rural setting
- Wildlife-linked businesses (hunting, tourism)
- Sustainable harvesting of plants (Devil's claw)



Locally Managed Marine Areas (LMMA)

<https://blueventures.org/>

- Managing tropical fisheries with local communities
- Rapid recovery potential after temporary fish closures
- Blue Forest restoration (mangroves, seagrass beds)
- Sea-food value chains (seaweed, sea cucumber & mud crab farming)



COMACO

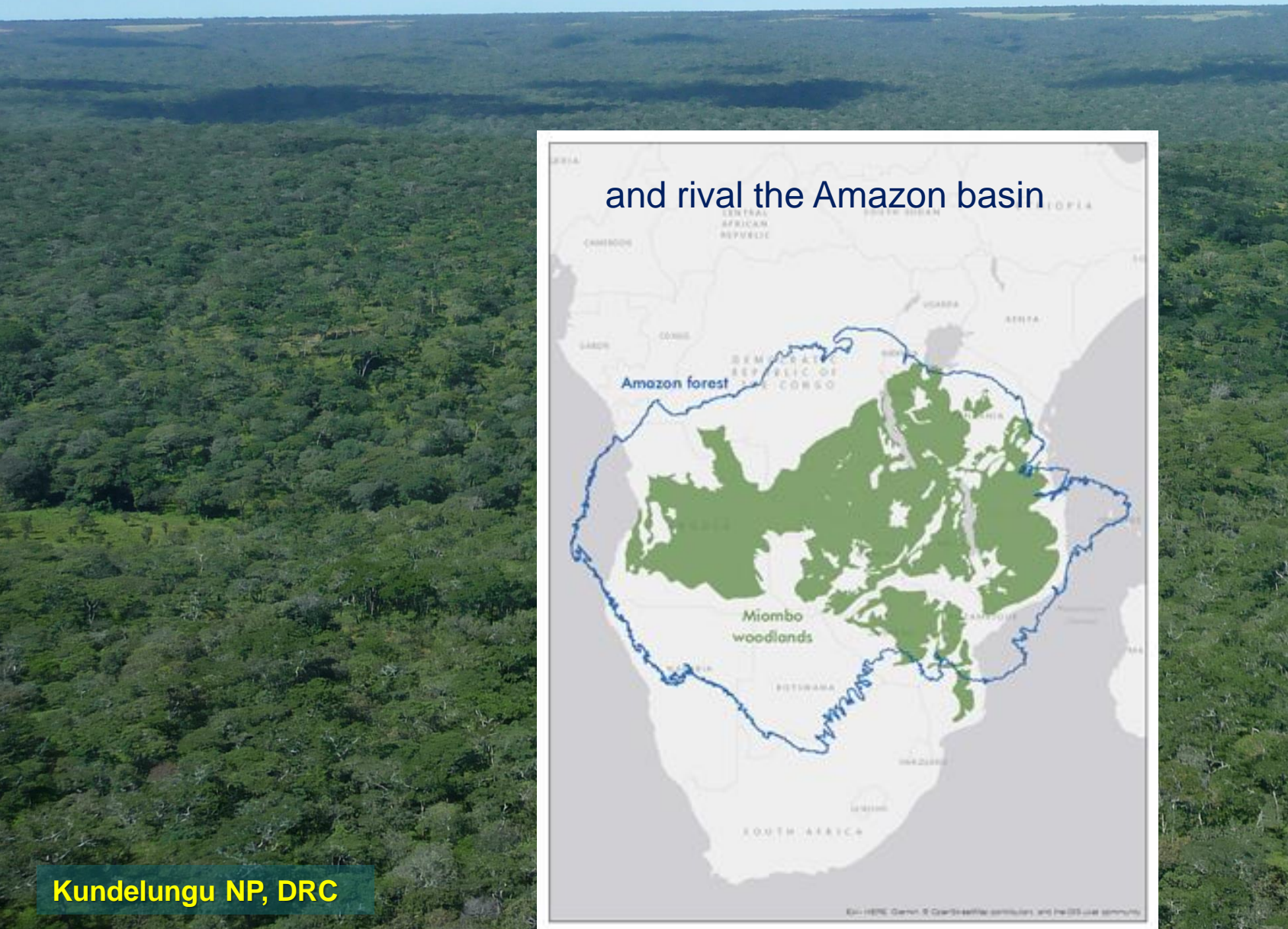
Community Markets for Conservation

<https://itswild.org/>

- A social enterprise incentivizing sustainable farming and conservation in the Zambezi valley
- Conservation pledges
- Support for sustainable farming methods
- Conservation dividends based on conservation results
- Value chain development – ‘It’s Wild’
- REDD+ carbon project



MIOMBO WOODLANDS

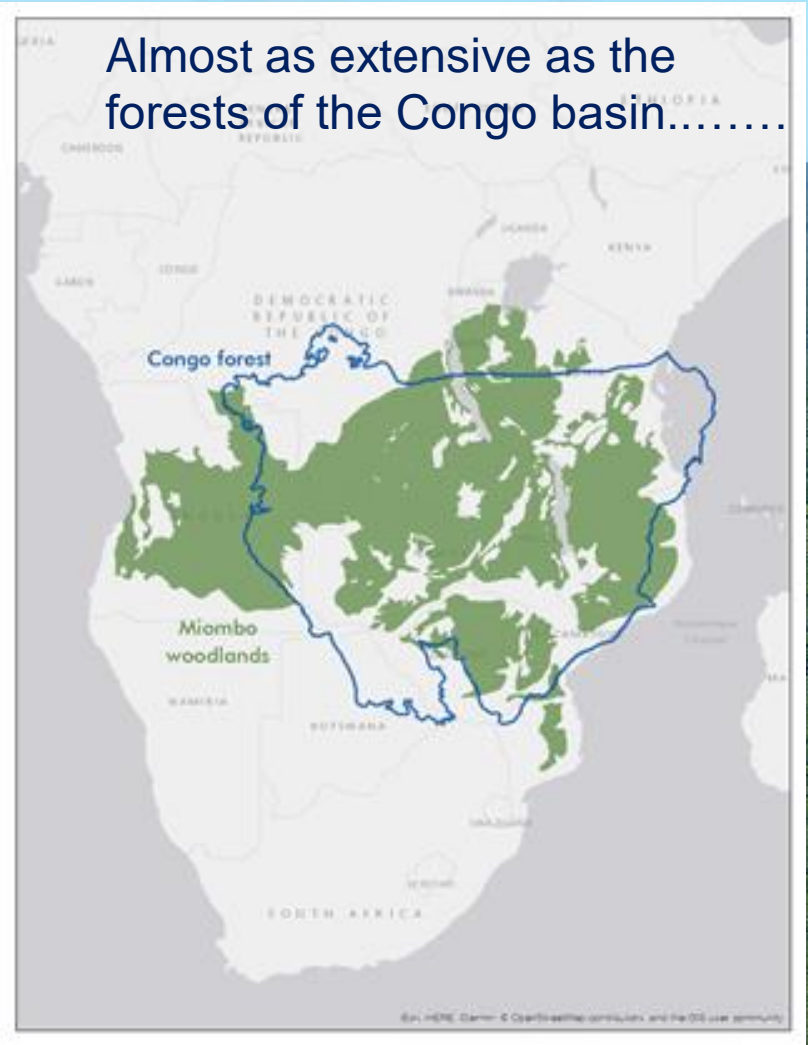


Kundelungu NP, DRC

and rival the Amazon basin



Almost as extensive as the forests of the Congo basin.....



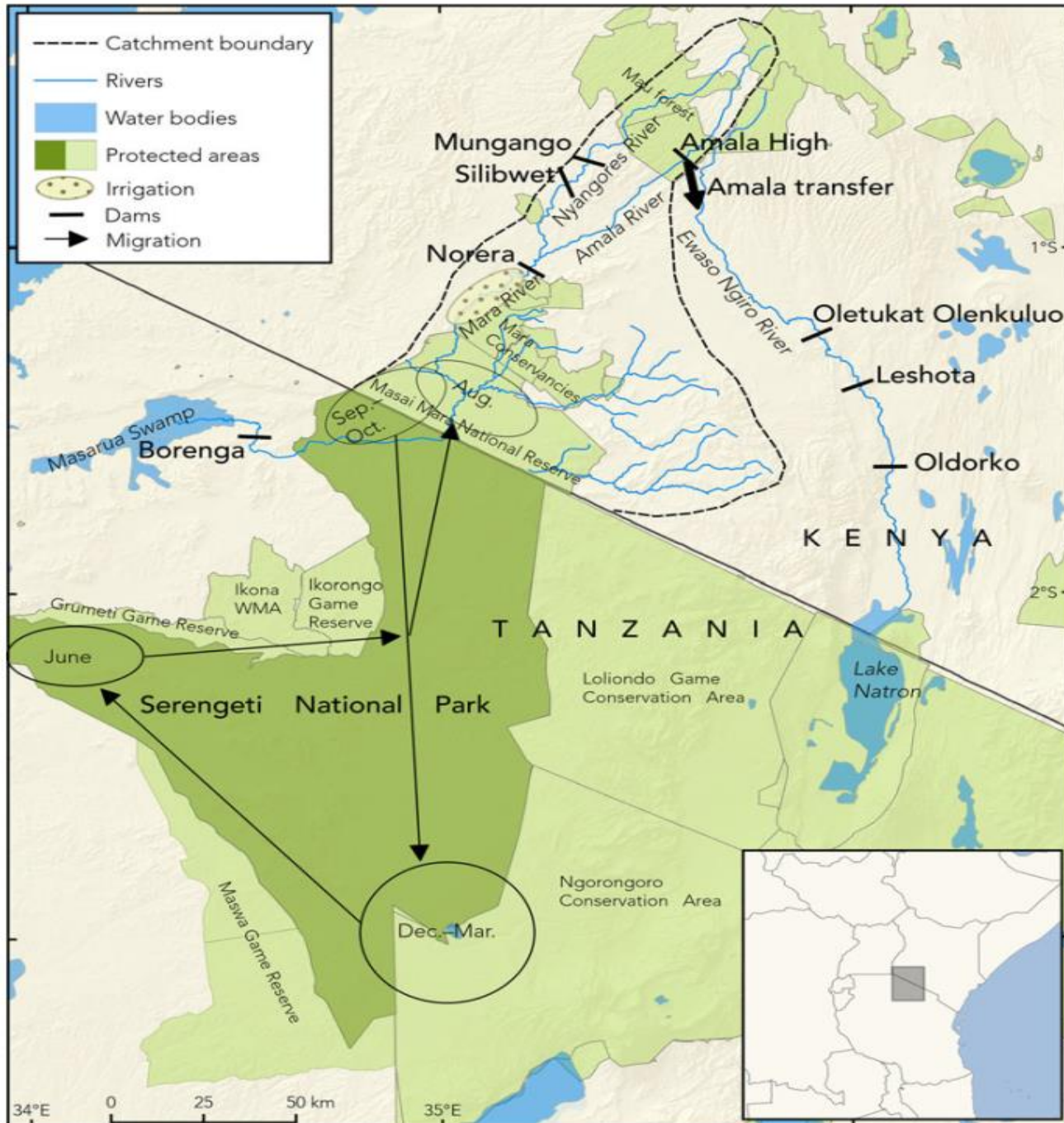
VALUING WATERSHED SERVICES

An aerial photograph of a lush, green landscape in the Pantanal region of Brazil. The central focus is a large, circular pond with a sandy or light-colored shoreline. The pond is surrounded by dense, vibrant green forest. Scattered throughout the forest are numerous trees with bright pink or magenta blossoms. In the background, several other smaller ponds and lakes are visible, some with blue water and others with greenish water. The overall scene is a beautiful representation of a healthy watershed ecosystem.

Pantanal, Brazil

Watershed management

Mara River basin



- A transboundary basin
- Deforestation in water tower + climate change
- ‘Low flow’ bottleneck for people and wildlife
- Options for improving water storage:
 - Better land use practices ?
 - Dams?
- Kenya/Tanzania collaboration critical to arbitrating water allocations

'Watershared' initiative

Natura Bolivia

Reciprocal Water Agreements

Avoided deforestation in watershed in exchange for incentive packages

Municipal Water Fund



Land Degradation Neutrality

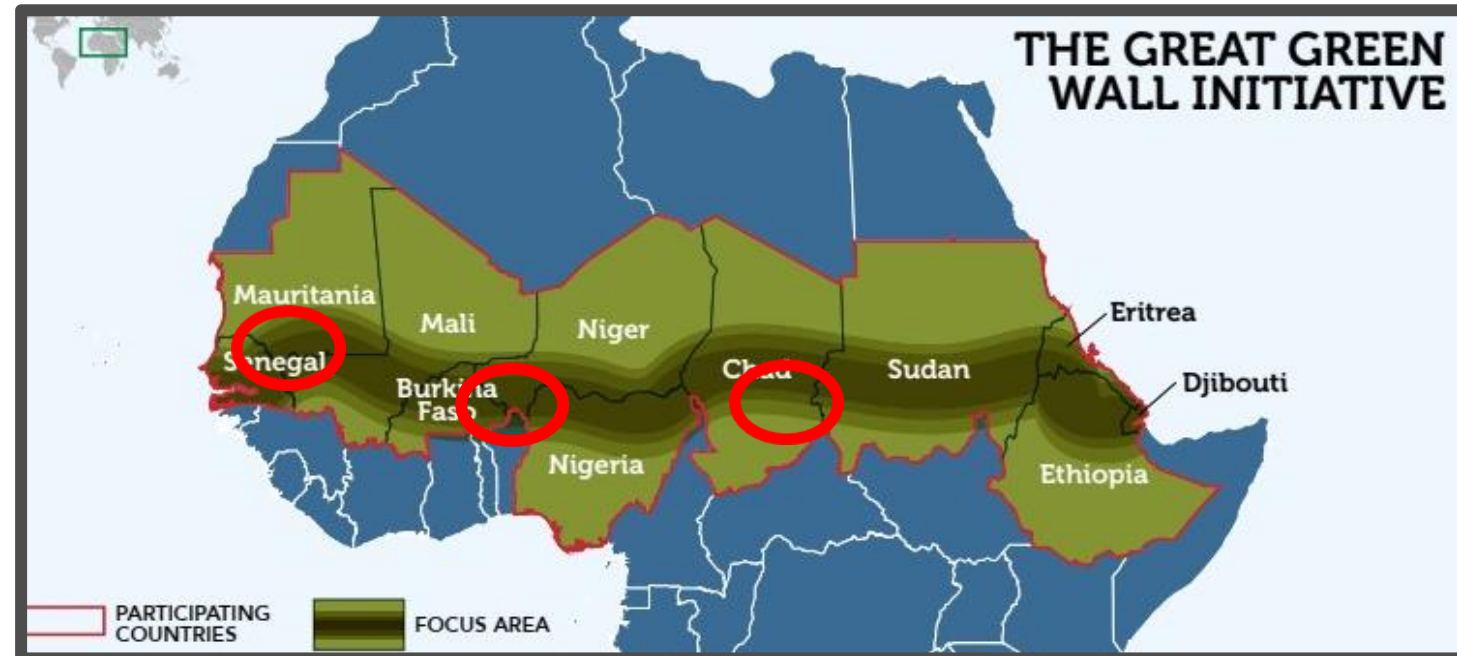
Habitat restoration

Majority of Africa's drylands are degraded

Reforestation - Agroforestry – Conservation Agriculture

Mangrove restoration

Invasive species removal



Integrated management of WAPOK landscape

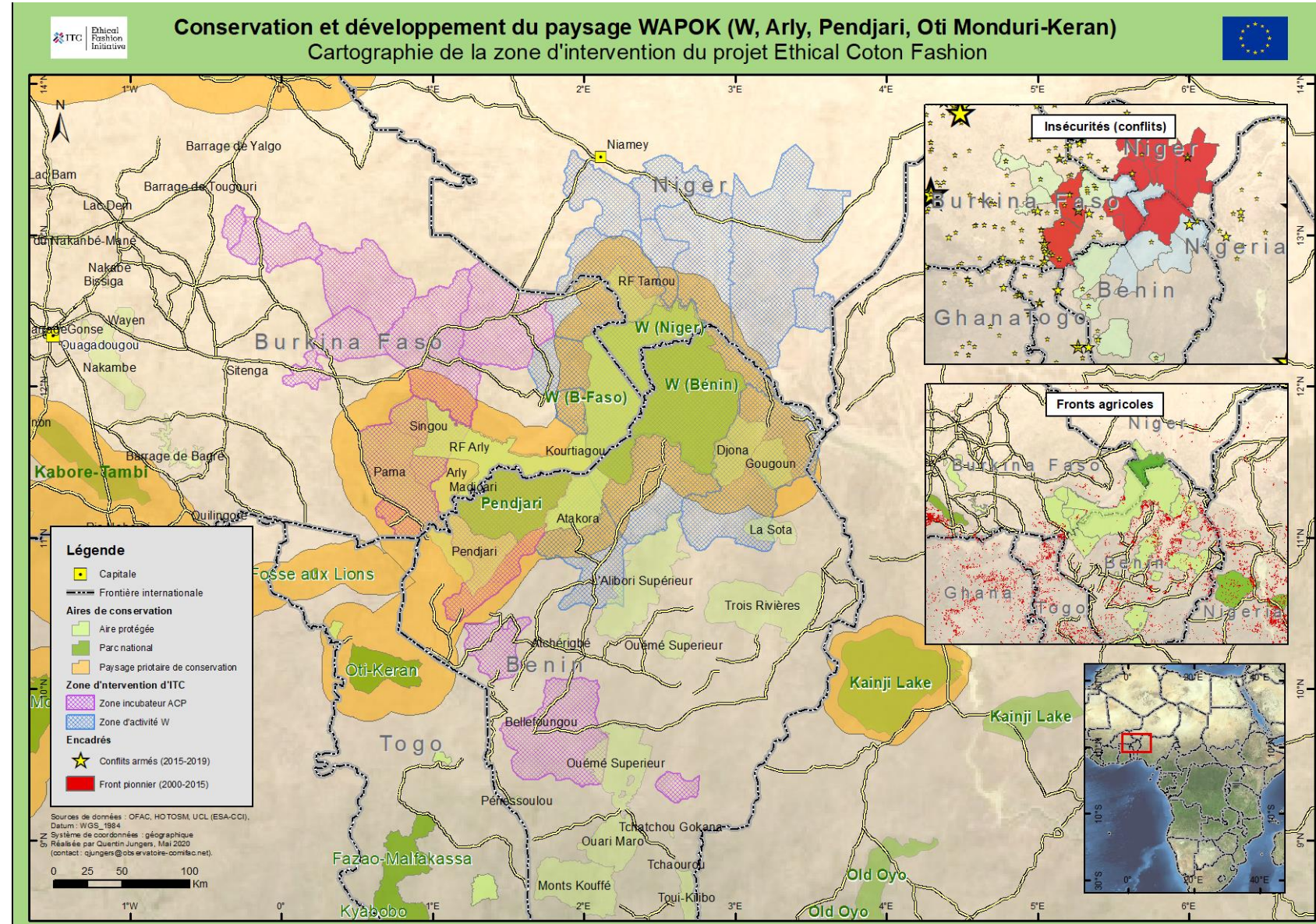
CONVERGING OBJECTIVES

Biodiversity conservation
(PA connectivity, NaturAfrica)

Soil & habitat restoration
(Green Wall; Green Sahel)

Agro-pastoral sustainability

Value chain development



A multi-sectoral approach



**Green value chains
'Ethical Fashion'
(Burkina Faso)**



Ecosystem connectivity across the Green Sahel



Managing transhumance

Northern Cameroon

Environnement

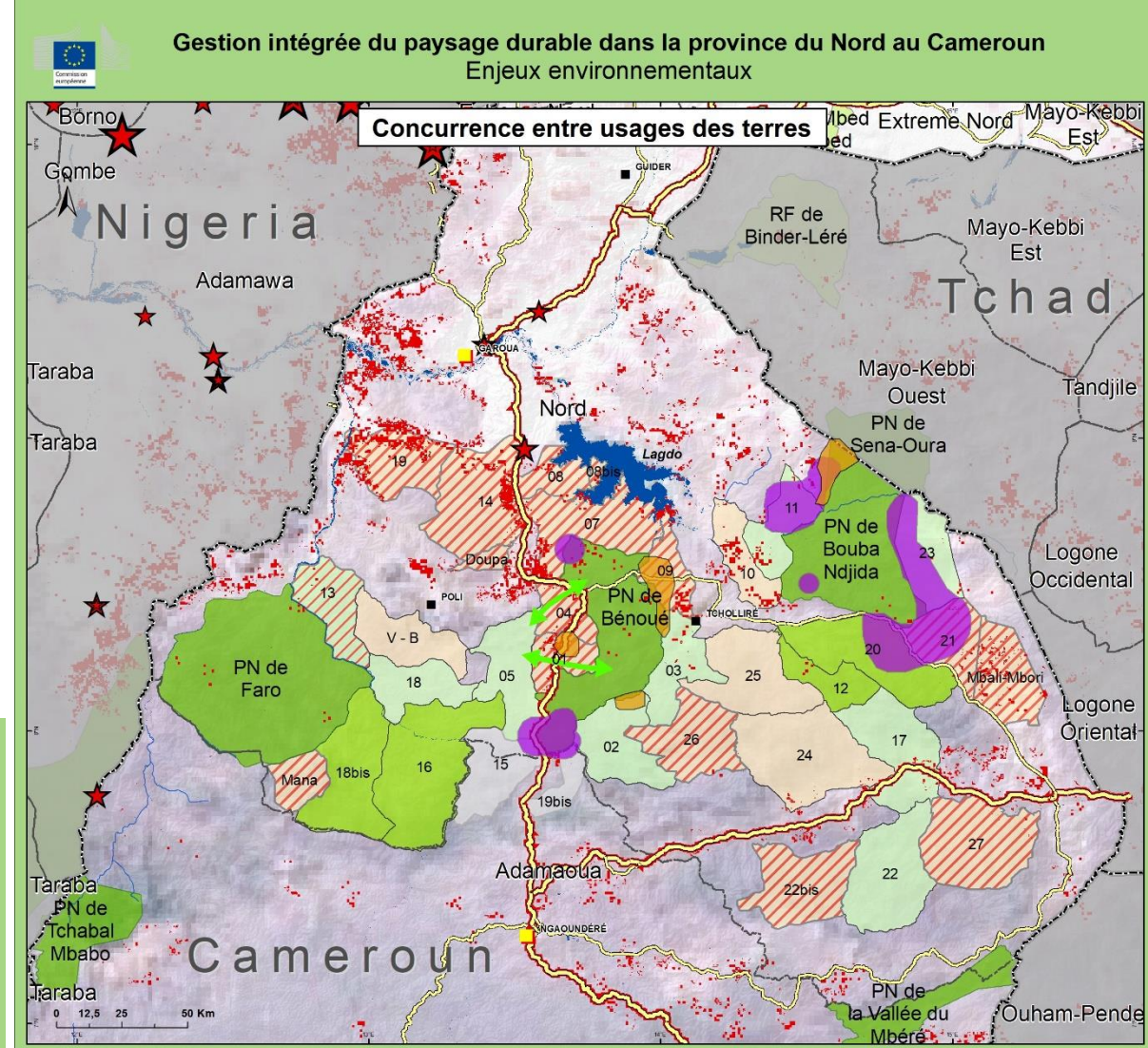
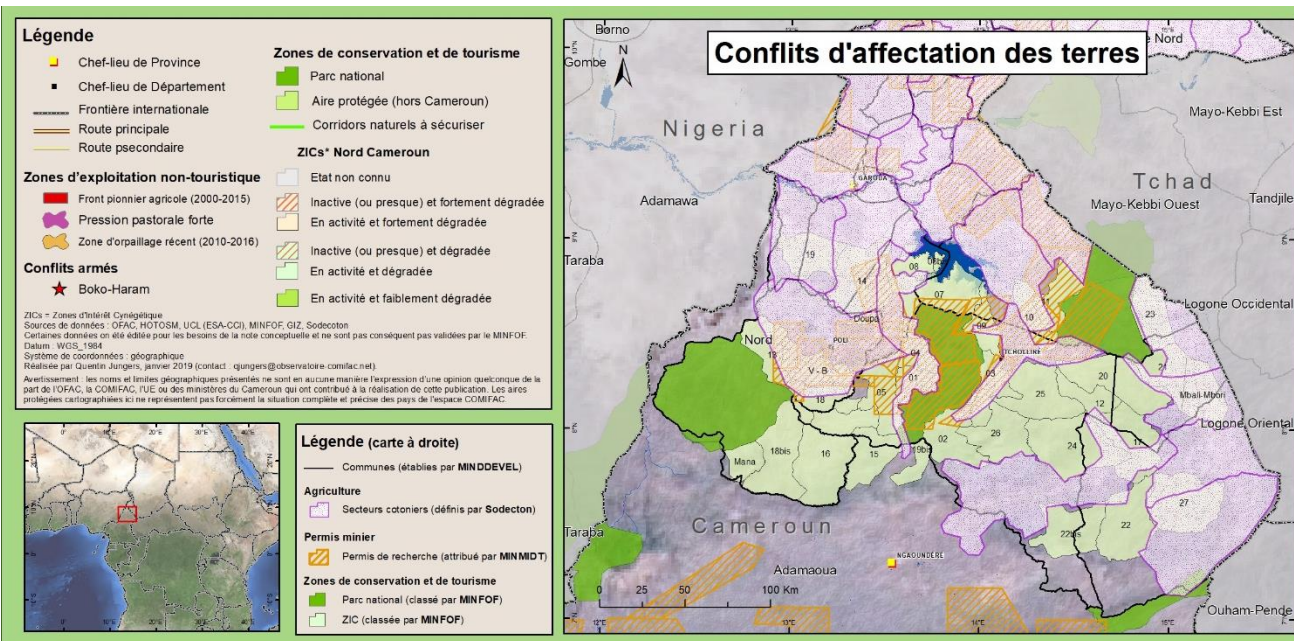
EcoNorCam; Protected Area support

Agropastoral

ABC-PADER; ReSINoC; PAIRIAC

Governance-Security

Law enforcement, Community-led governance structures



Nexus Nature-Development-Stability

Virunga National Park

An integrated approach linking biodiversity protection and economic development

Fisheries and
agriculture



Security



Sustainable energy

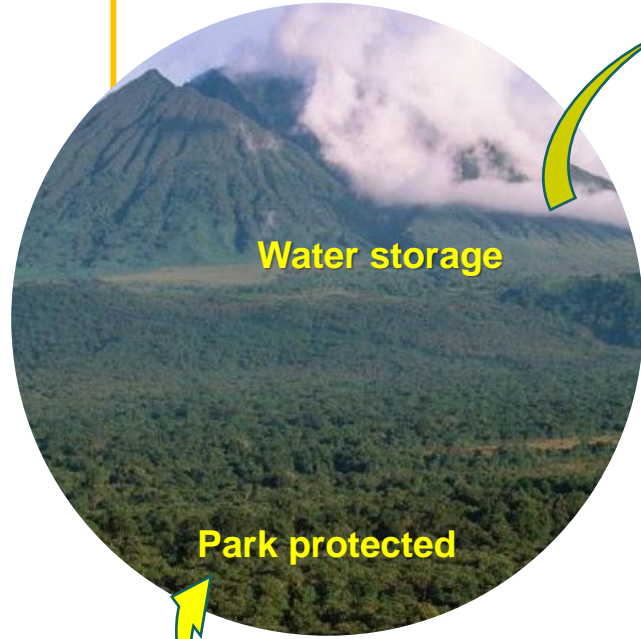


Ecotourism

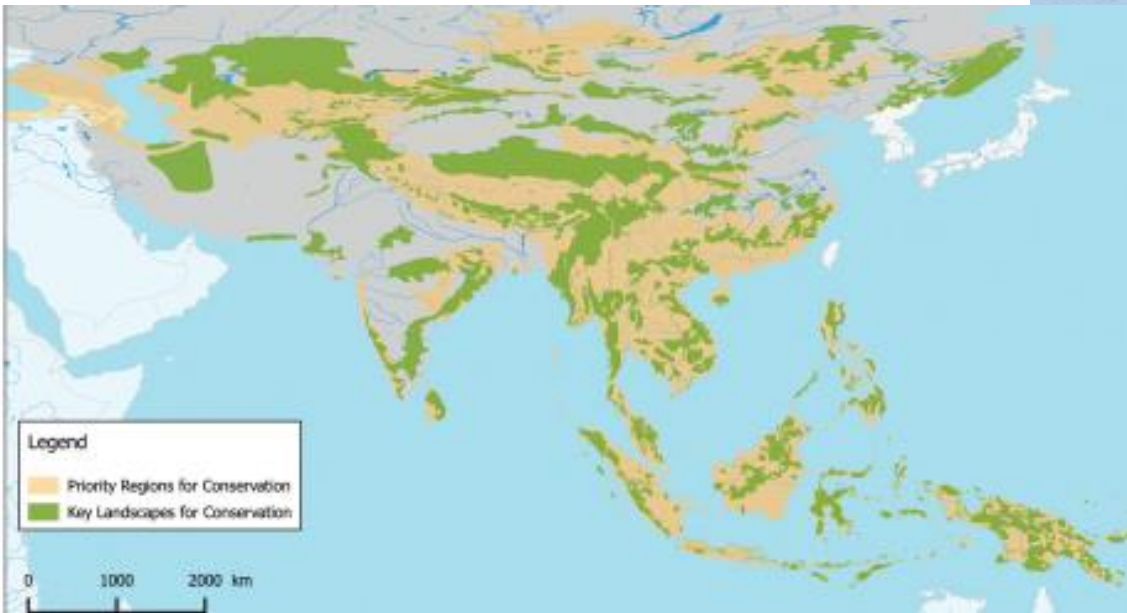
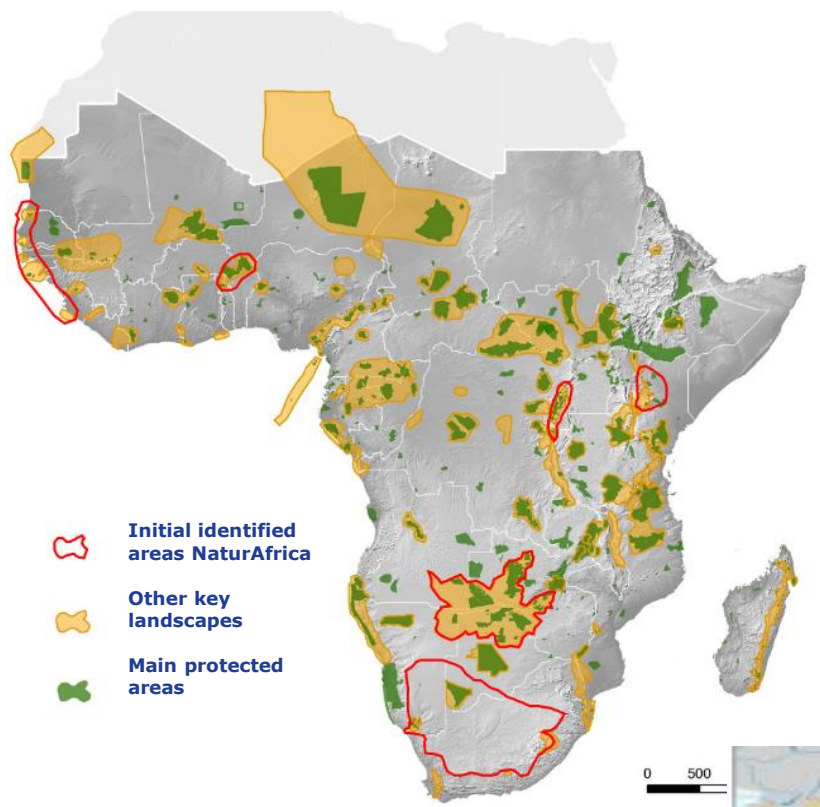


Virunga Alliance

...a cascading effect



PRIORITY LANDSCAPES



Part 3. Global Programmes

Global Programmes

Tackling Illegal Wildlife and Forest Crime

https://ec.europa.eu/environment/cites/traf_steps_en.htm



Knowledge Management

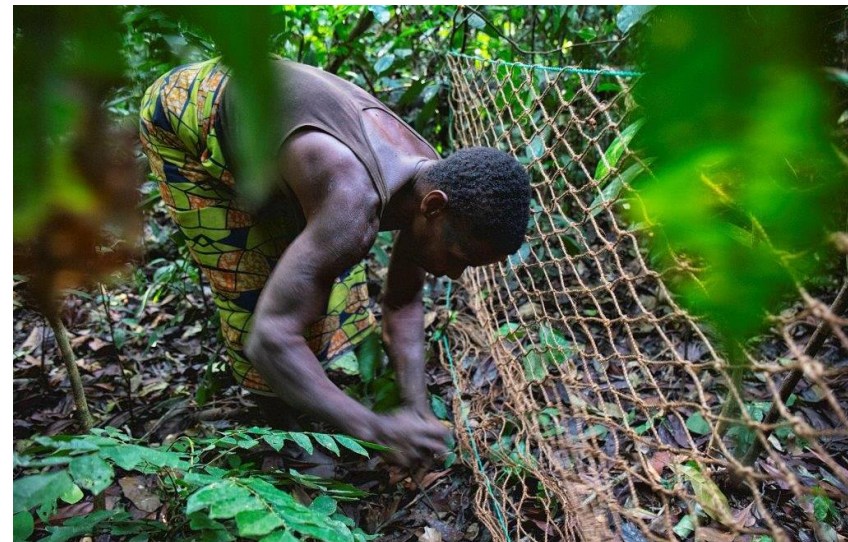
<https://www.biopama.org/>



From Knowledge to Action for a Protected Planet

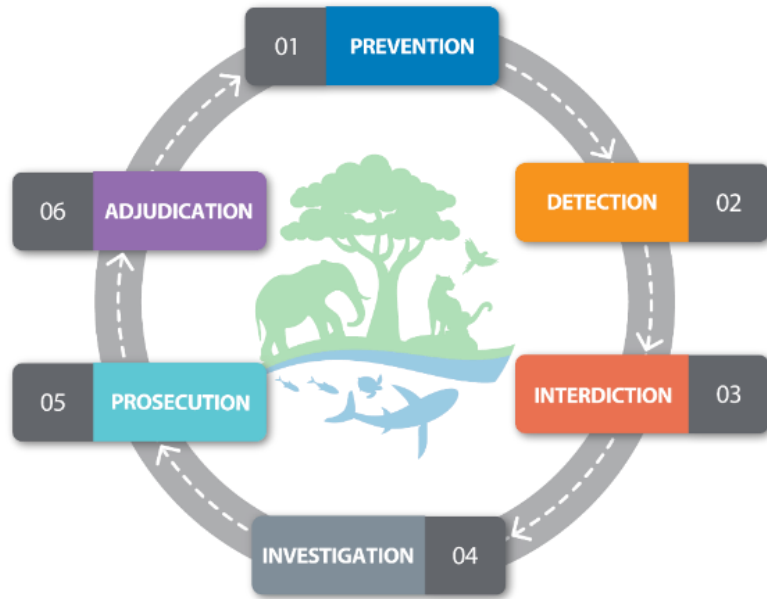
Sustainable Wildlife Management

<https://www.swm-programme.info/homepage>



Combating wildlife trafficking

Support to the International Consortium on Combating Wildlife Crime (ICCCWC)

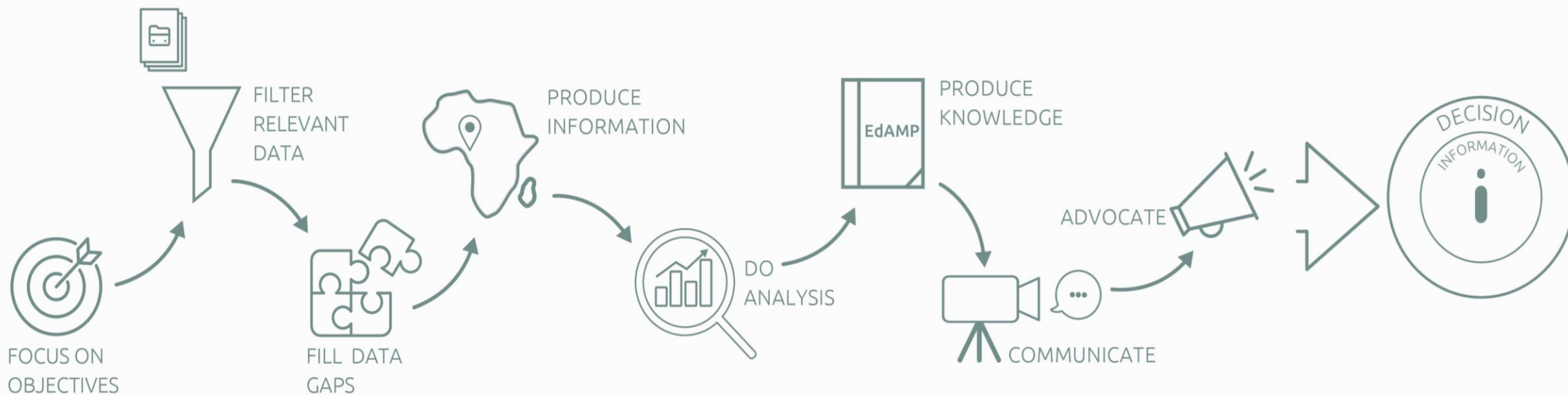


Support to Civil society in 13 countries

Total support: 80 Mions EUR



BIOPAMA – from Knowledge to Action for a Protected Planet



BIOPAMA aims at **reinforcing the management and governance** of protected and conserved areas in the 79 **African, Caribbean and Pacific (ACP)** countries through better use and monitoring of **information and capacity development** on management and governance.

BIOPAMA

From Knowledge to Action for a Protected Planet

Knowledge for everybody

Central Africa Forest Observatory

New OFAC portal

Product
The State of the Forests
Explore

Product
The State of Protected Areas
Explore

Tool
New OFAC portal
Explore

Tool
Projects platform
Explore

Tool
National indicators
Explore

European Commission

Biodiversity and Food security

SUSTAINABLE WILDLIFE MANAGEMENT PROGRAMME

- Improve how wildlife hunting is regulated
- Strengthen management capacities of indigenous rural communities
- Increase supply of sustainably produced meat products and farmed fish
- Reduce demand for wild meat in urban areas
- Promotes a One Health approach



LES DELICES DE MAMIE	
LE CIVET DE LAPIN (RABBIT IN SAUCE)	8500 FR\$
LE CHILI CON CARNE (CHILI CON CARNE)	7500 FR\$
LA GIGOLETTE DE VOLAILLE (CHICKEN WITH GIGOLETTE SAUCE)	8500 FR\$
LE HARICOT MOUTON (SHEEP WITH BEAN SAUCE)	7500 FR\$
LA LANGUE DE BEEF SAUCE PIQUANTE (BEEF TONGUE WITH CHILI SAUCE)	8500 FR\$
LE NAVARRIN D'AGNEAU (LAMB WITH NAVARRIN SAUCE)	8500 FR\$
LE POULET AU CITRON (CHICKEN WITH LIME SAUCE)	7500 FR\$
LES TRIPES AU CALVADOS (TRIPES WITH CALVADOS SAUCE)	6500 FR\$
LES ROGNONS SAUCE MADERE (KIDNEY WITH MADERE SAUCE)	8500 FR\$
LE BEEF BOURGIGNON (BEEF COOKED WITH RED WINE)	8500 FR\$
LE BEEF STROGONOFF (BEEF STROGONOFF)	9000 FR\$
LA BLANQUETTE DE VEAU (VEAL WITH BLANQUETTE SAUCE)	9500 FR\$
LA SAUCISSE DE MORTEAU AUX LENTILLES (MORTEAU SAUSAGE WITH LENTIL)	8500 FR\$
LES CHASSES DU MAYOMBE	
BOUILLON D'ANTILOPE (ANTILOPE SOUP)	7500 FR\$
BOUILLON DE CROCODILE (CROCODILE SOUP)	7500 FR\$
BOUILLON DE BOA (BOA SOUP)	7500 FR\$
BOUILLON DE PORC-EPIC (PORCUPINE SOUP)	7500 FR\$
BOUILLON DE SHIBBI (SHIBBI SOUP)	7500 FR\$
BOUILLON SAUVAGE (WILD SOUP)	7500 FR\$
POISSON SALE AUX AUBERGINES (SWEWED SALT FISH WITH EGGPLANT)	7500 FR\$
NETE AUX CREVETTES ET A LA VIANDE (SWEWED MARROW SEEDS WITH SHRIMPS, BEEF AND TOMATOES)	7500 FR\$
SAKA-SAKA (SWEWED LOCAL HERBS WITH SEWASS FISH, PALM OIL, ONIONS)	7500 FR\$

*SOUS RESERVE DES PERIODES DE CHASSE

TOUS LES PLATS DU DAKBARI SONT SERVIS ACCOMPAGNES
ALL THE DAKBARI DISHES ARE SERVED WITH VEGETABLES



Food and Agriculture Organization
of the United Nations

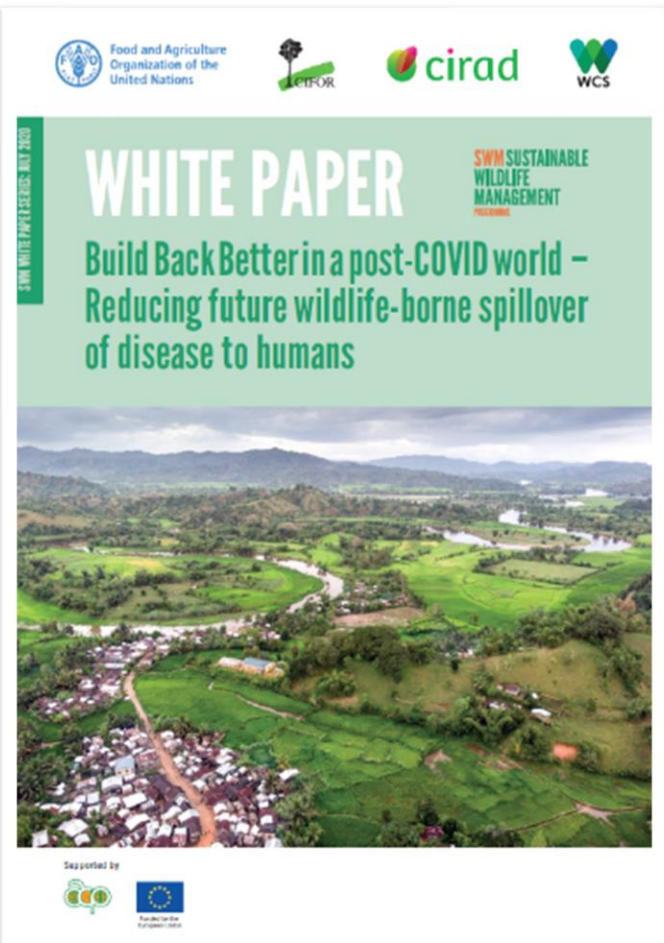
One Health

Bushmeat and pandemics

PREVENT: Minimize risks of exposure to wildlife pathogens at human–wildlife–livestock interfaces and mitigate impacts

DETECT: Ensure the early detection and reporting of future zoonotic spillover and disease outbreaks at human–wildlife–livestock interfaces

ENABLE: Put in place One Health policy, regulatory and operational systems at the national level



CAPACITY BUILDING

Faculty of Science
University of Kisangani



ERAIFT

Ecole Régionale post-universitaire d'Aménagement et de gestion
Intégrés des Forêts et Territoires Tropicaux, Kinshasa



Biodiversity and human rights

All interventions underpinned by a community rights-based approach

- Free, Prior and Informed Consent
- Grievance mechanisms
- Participatory approach
- Gender issues





Upcoming webinars

- Introduction to Circular Economy – 15/01
- Rendre la coopération au développement plus « verte » – 26/01

Thank you



Photo credits: Blue Ventures, C.Aveling, P.Betts, M.Bellosta, C.Chatelain, COMACO/It's Wild, CIFOR, Ethical Fashions Initiative/A.Mimault, ERAIFT, Food Foundation, G.Galice, J&T.Hart, Livelihoods Funds, P.Mayaux, D.Mansell-Moulin/FAO, Namibia Economist, Northern Rangelands Trust, Natura Bolivia, N.Ortega, Shutterstock, SWM, World Agroforestry Centre, Virunga Foundation, WWF Namibia, T.Tear, UNODC.

