



Digitalisation for Agriculture

Presentation of a case study from the EU Delegation in Ivory Coast: Cocoa plantation monitoring in Ivory Coast

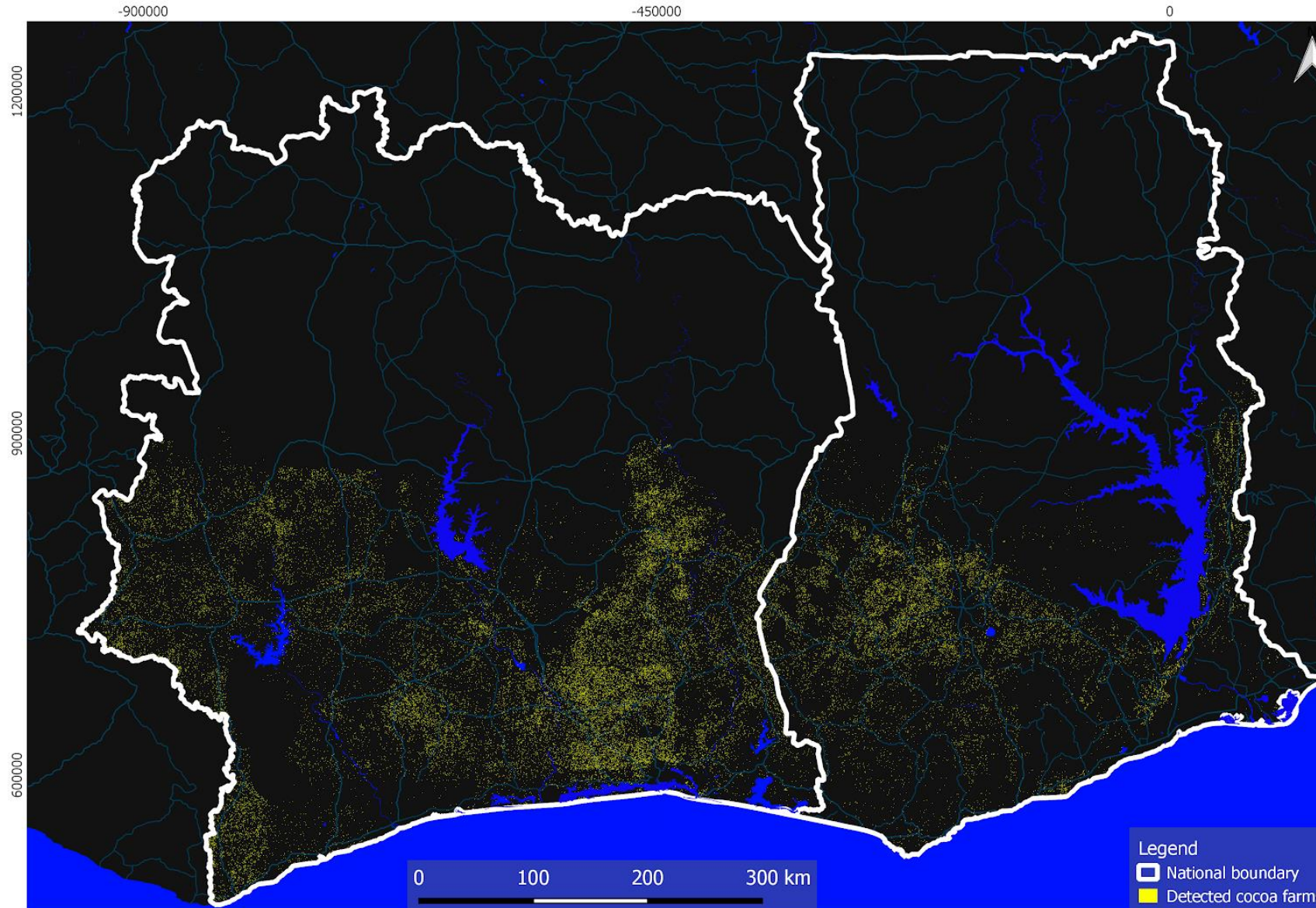
Gaspard DE BOUSIES,

EUD Ivory Coast

Sustainable Cocoa: How EO supports EU policy and decision-making in Ivory Coast

- Provides **credibility** in interactions with govt, inter-DG, private sector, IO, civil society
 - Internal scientific evidence and reliable data, e.g. on cocoa plantations, deforestation monitoring
 - Essential for cross-checking information
- Informs **programming** (2021-2027):
 - Budget support for Ivorian government : Building monitoring capacity
 - Project support: identifying areas for intervention (pilot, cross-border projects)
 - Combination with other JRC services (eg. socio-economic modelling)
- **Upcoming EU legislation on deforestation & due diligence**
 - EO essential tool for (public) traceability systems; implementation of cut-off date & monitoring

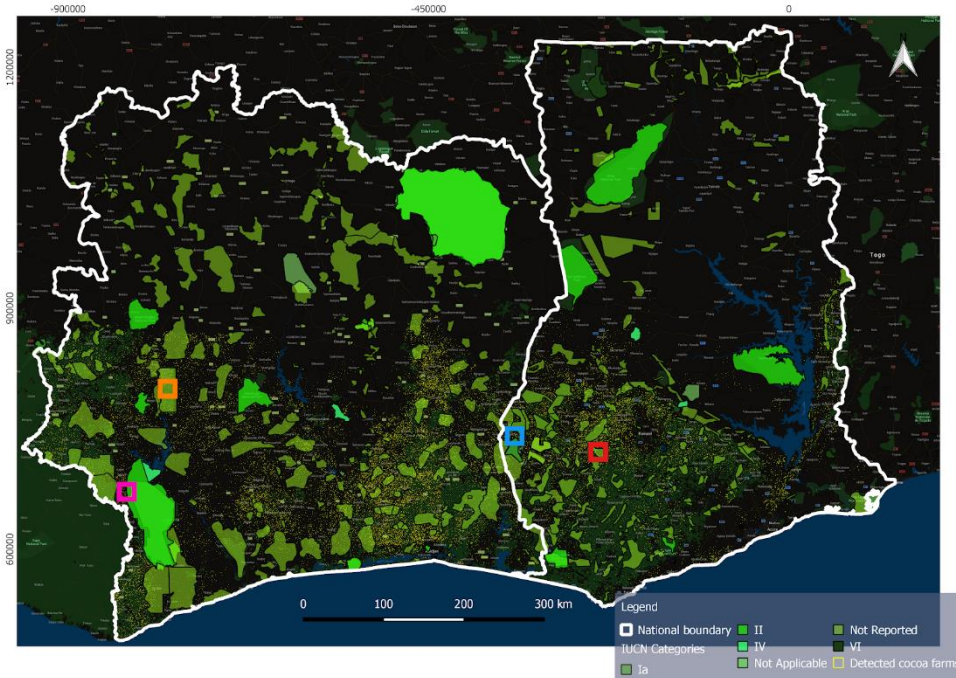
Cocoa map



The producer accuracy in mapping cocoa farms was 97.9% and the user accuracy was 87.0%.

The cultivated cocoa area occupies appr. 4.8Mha in Côte d'Ivoire and appr. 2.3Mha in Ghana.

Protected areas



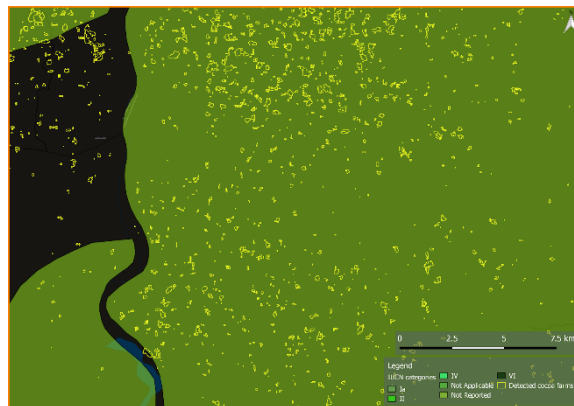
A - Haut Sassandra Forest Reserve (undes. IUCN cat.)
- orange box

B - Sukusuki (undes. IUCN category)
- blue box

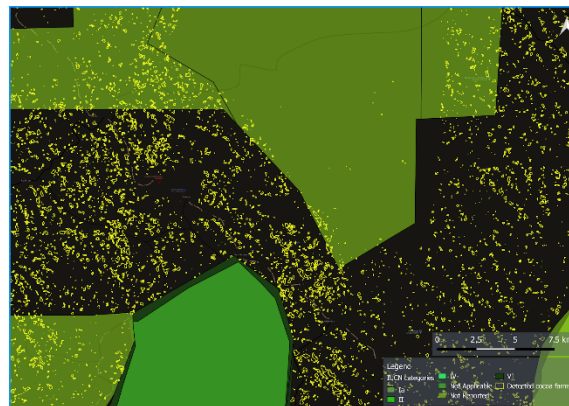
B - Bia Forest Reserve (IUCN category II)
- blue box, dark green

C - Anhwiaso East Forest Reserve (undes. IUCN category)
- red box

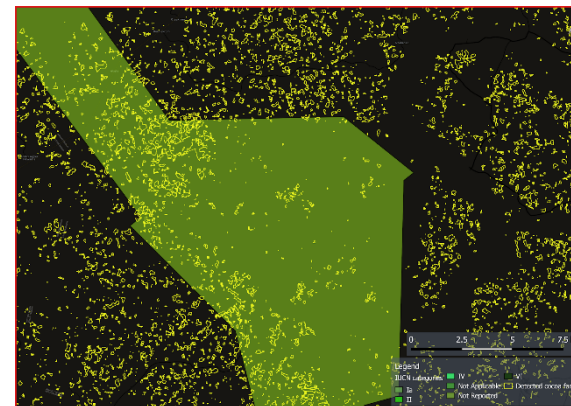
D - Tai National Park (IUCN category II)
- purple box, dark green



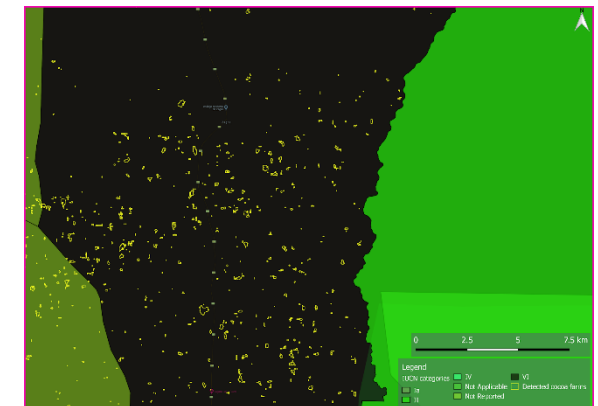
A



B



C



D

