



## Green Deal Country Fiche

### Argentina

Population in 2019

44,94 million habitants

Projected population in 2050

54,97 million habitants

Surface

2.780,4 thousands km<sup>2</sup>

Population density (2019)

16 habitants per km<sup>2</sup>

GDP per capita

9.912,28 US\$ (2019)

Population living below 1,90 \$/day

1,30 % in 2018

Human Development Index

0,85 (2019, UN target: >0,8)

#### Legend

□ Main Protected Areas

#### Land Cover Classes

■ Cropland rainfed

■ Cropland irrigated

■ Mosaic crops/nat.veg

■ Tropical dense forest

■ Deciduous forest

■ Coniferous forest

■ Mixed forest

■ Shrubland

■ Grassland

■ Sparse vegetation

■ Swamp forest

■ Mangrove

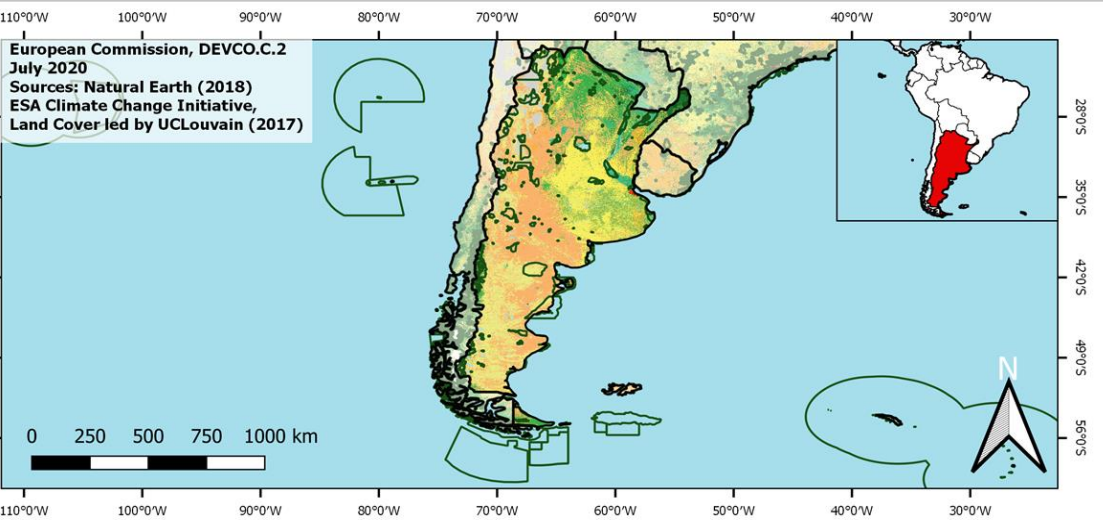
■ Swamps

■ Urban areas

■ Bare areas

■ Water bodies

■ Permanent snow and ice



Share of global emissions (2018)

0,535%

#### NDC: Mitigation Summary

(NDC from 2020)

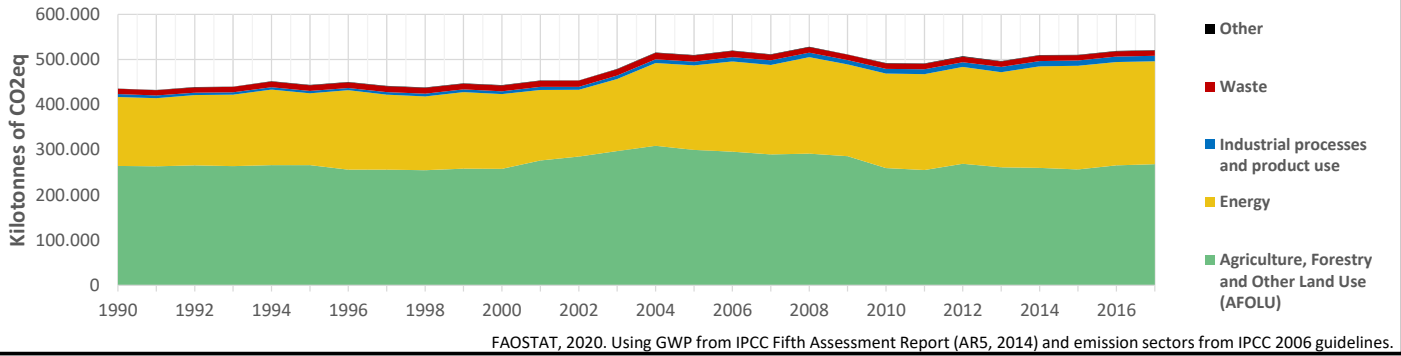
Argentina unconditionally commits to keep its net emissions below 359 MtCO<sub>2</sub>e in 2030, throughout all sectors of the economy. Mitigation actions will focus on energy, agriculture, forests, transport, industry, health and mining.

#### INTPA "NDC Group"

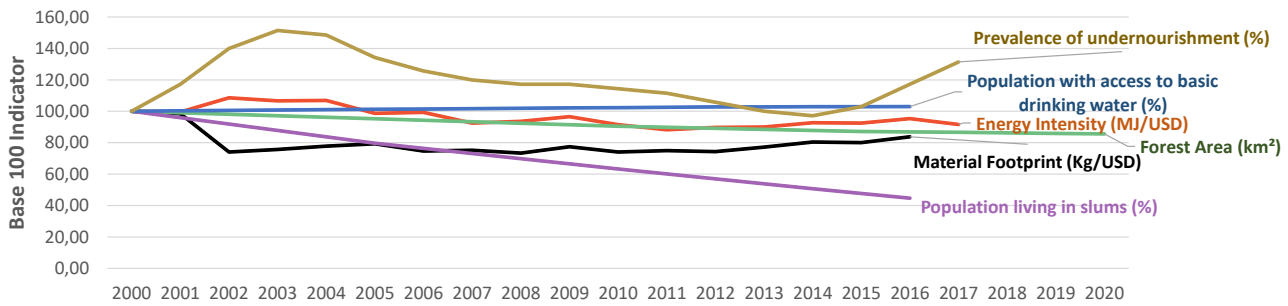
Group 2 - Suggested EU focus on both Mitigation and Adaptation

Pillar	Indicator Name and Unit	Value	Interpretation
Green, circular and low-carbon economy	Ecological footprint (Consumption in global hectares per capita, 2017)	3,3 gh/cap	Above the global sustainable threshold of 1,6 gha per capita
	Recycling and composting rate (% of total solid waste, 2017)	<5%	No or very low rate of recycling and composting (min EU MS = 7%)
	Water productivity (USD of GDP per m <sup>3</sup> of water extracted, 2017)	13,66 \$/m <sup>3</sup>	Less water efficient than EU average, but within range of EU MS
	Material footprint (Kg of raw materials used per USD of GDP, 2010)	1,1 kg/\$	Larger footprint than EU average (0,97), but within range of EU MS
	Sustainable Consumption and Production Policy Framework (2017)	B2	Policy framework for SCP, but lacks a specific SCP macro policy
	Change in emissions (production) vs change in GDP (2007-2017)	+1% / +124%	Relative decoupling: emissions increased, but slower than GDP
Biodiversity & Forests	Terrestrial protected areas (% of total land area, 2020)	8,44%	Significant efforts are needed to meet CBD Target of 17% by 2020
	Threatened species (% of total evaluated species, 2019)	8,36%	High share of threatened species, risk missing SDG target 15.5
	Population around protected areas (% total pop., 10km buffer, 2015)	NA	No Data
	Forest area change (% change between 2015 and 2020)	-1,8 %	SDG Target 15.2 not achieved (halt deforestation by 2020)
	Sustainable forest management (% area with long-term plan, 2020)	NA	No Data
	Employment in forestry (number of full-time equivalents, 2015)	9000 FTE	Low share of total employment (<0,5% of total labor force in 2015)
Green and Smart Cities	Proportion of urban population living in slums (% in 2016)	14,70%	Further efforts needed for SDG Target 11.1 (upgrade by 2030)
	Satisfaction with public transport (% satisfied, 2018)	57,74%	Medium satisfaction (UN SDSN interpretation)
	Solid waste uncollected or dumped in the open (% of total, 2017)	54%	Significant efforts are needed to meet SDG Target 11.6
	Wastewater receiving primary treatment (% of total)	11,80%	Significant efforts needed to ensure at least full primary treatment
	Urban air pollution (µg/m <sup>3</sup> of PM 2.5 particules, 2016)	11,68 µg/m <sup>3</sup>	Within EU 2020 target (18µg/m <sup>3</sup> ), above WHO guideline (10µg/m <sup>3</sup> )
	Alignment of national DRR strategies to Sendai Framework (0-1, 2018)	0,75	Substantial alignment with the Sendai Framework (1)
Sustainable Energy	Access to electricity (% of population, 2018)	100,00%	SDG Target 7.1 has been achieved
	Renewable energy (% of total energy consumption, 2016)	10,03%	Low share, increases needed to contribute to SDG Target 7.2
	Renewable electricity (% of electricity production, 2015)	28,14%	Medium share of renewable electricity
	Access to clean cooking (% of total population with access, 2018)	>95%	Universal access to clean cooking has been achieved
	Fossil fuel subsidies (% of GDP, 2015)	1,62%	Among the Top 35 countries with >1% GDP spent on FF subsidies
	Energy Intensity (megajoules per constant 2011 PPP GDP, 2017)	4,28 MJ/\$	Energy Intensity above EU average, but still within range of EU MS
Food systems: from Farms to Forks	Rural poverty (% of rural population below 1\$90 a day, 2018)	NA	No Data
	Food security (% of pop in moderate or severe insecurity, 2016-2018)	32,10%	Significant efforts needed to meet SDG Target 2.1 of 0% by 2030
	Nutrition (% of children under 5 who are stunted, 2019)	7,90%	Progress is still needed to meet SDG Target 2.2 of 0% by 2030
	Fertilizer consumption (kg per hectare, 2016)	50,34 kg/ha	Below lowest EU MS value (60 kg/ha in Romania)
	Land degradation (national area with declining productivity 1999-2013)	35,96%	Significant efforts needed to meet SDG Target 15.3 of 0% by 2030
	Agriculture and FOLU share of emissions (% of CO <sub>2</sub> e in 2017)	51,54%	High share of emissions - Key sector for climate mitigation
Water & Oceans	Population using at least basic drinking water (% of pop., 2017)	99,08%	Some progress still needed to meet SDG Target 6.1 (100% by 2030)
	Population using at least basic sanitation services (% of pop., 2017)	95,00%	SDG Target 6.2 (100% by 2030) is on track for achievement, but
	Water scarcity (m <sup>3</sup> of renewable freshwater per capita, 2014)	6794 m <sup>3</sup> /cap	Water shortages should be only irregular/local (>1700m <sup>3</sup> /capita)
	Water stress (water withdrawal as % of total available water, 2014)	6,64%	Low water stress (less than 25% of resource extraction)
	Marine protected areas (% of total marine area, 2020)	8,36%	Some progress is still needed to achieve CBD target of 10%
	Fish stocks overexploited or collapsed (% of fish stocks, 2014)	74,02%	SDG Target 14.4 (0% by 2020) not met, significant efforts needed

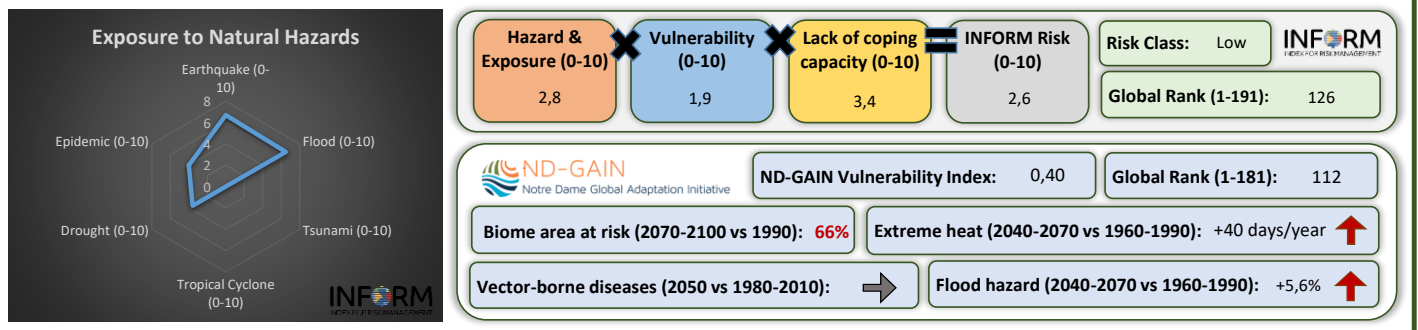
## Greenhouse Gas Emission History (Production-based)



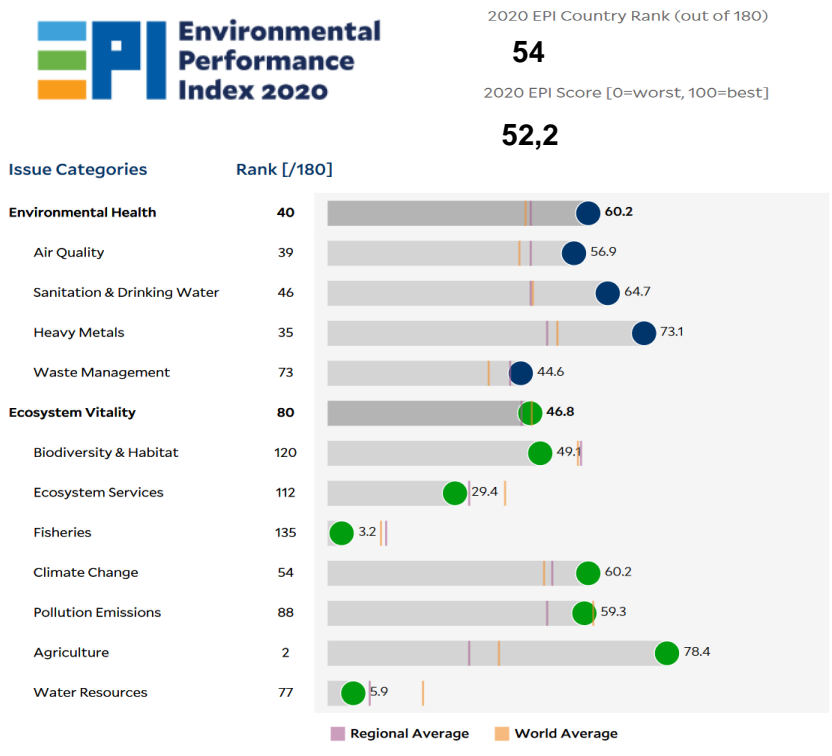
## Historic Trends of selected indicators per Green Deal Pillar (Base 100)



## Climate Adaptation Needs



## Environmental Performance Index 2020



## SDG Index 2020

(UN SDSN & Bertelsmann Stiftung)

