



Green Deal Country Fiche

Bahamas

Population in 2019
0,39 million habitants

Projected population in 2050
0,46 million habitants

Surface
0,0 thousands km²

Population density (2019)
#DIV/0! habitants per km²

GDP per capita
34.863,74 US\$ (2019)

Population living below 1,90 \$/day
NA

Human Development Index
0,81 (2019, UN target: >0,8)

Legend

□ Main Protected Areas

Land Cover Classes

■ Cropland rainfed

■ Cropland irrigated

■ Mosaic crops/nat.veg

■ Tropical dense forest

■ Deciduous forest

■ Coniferous forest

■ Mixed forest

■ Shrubland

■ Grassland

■ Sparse vegetation

■ Swamp forest

■ Mangrove

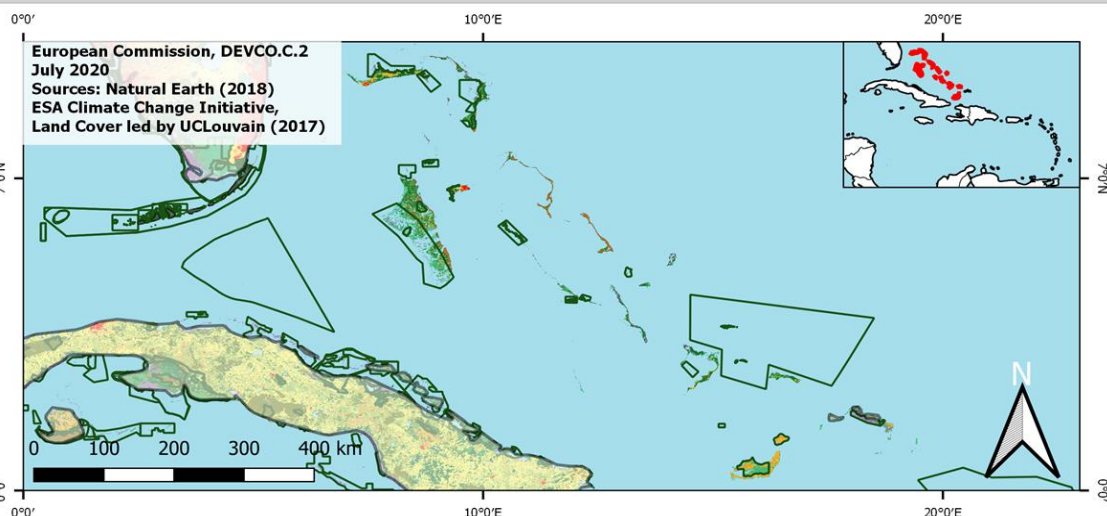
■ Swamps

■ Urban areas

■ Bare areas

■ Water bodies

■ Permanent snow and ice



Share of global emissions (2018)
0,005%

NDC: Mitigation Summary

(NDC from 2016)

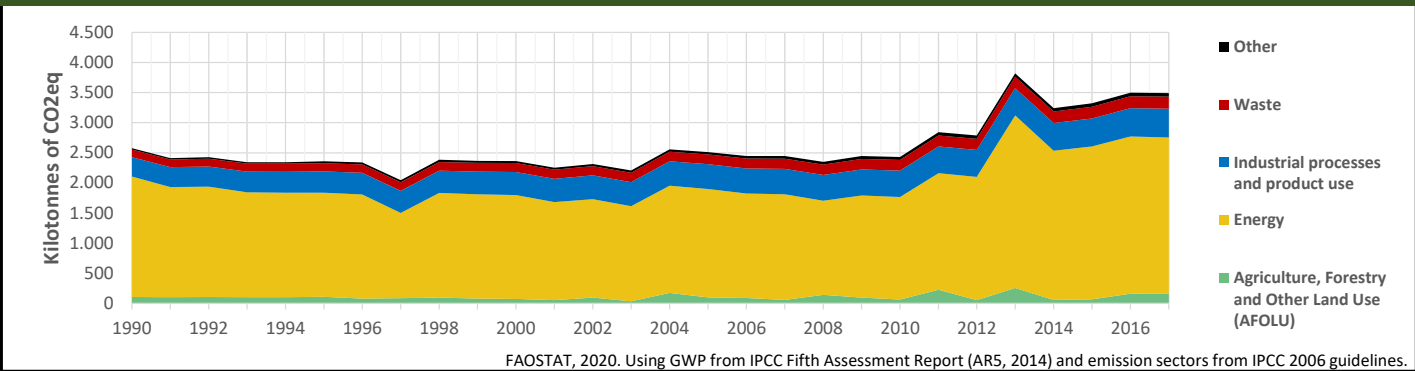
The Bahamas intends to achieve an economy-wide reduction in GHG emission of 30% when compared to its Business As Usual (BAU) scenario by 2030. Actions will focus on the energy sector and on forestry.

INTPA "NDC Group"

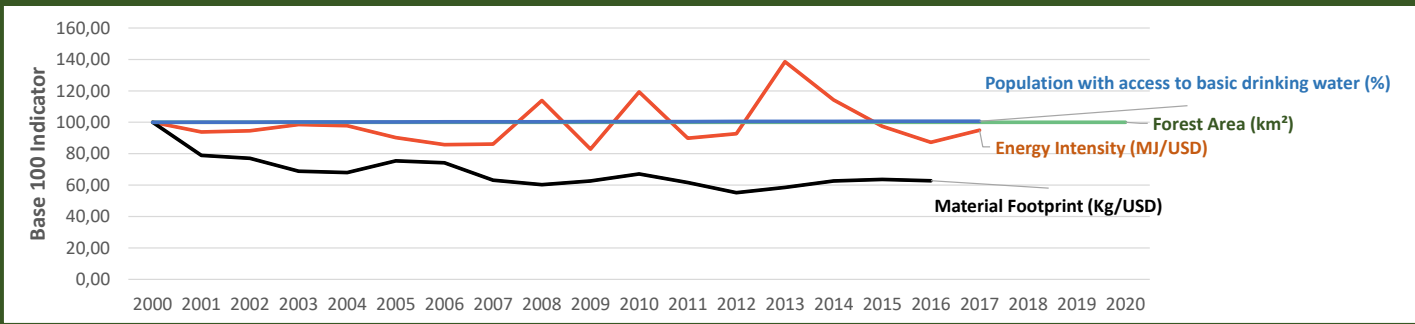
Group 3 - Suggested focus on adaptation for EU cooperation

Pillar	Indicator Name and Unit	Value	Interpretation
Green, circular and low-carbon economy	Ecological footprint (Consumption in global hectares per capita, 2017)	3,63 gh/cap	Above the global sustainable threshold of 1,6 gha per capita
	Recycling and composting rate (% of total solid waste, 2017)	NA	No Data
	Water productivity (USD of GDP per m³ of water extracted, 2017)	NA	No Data
	Material footprint (Kg of raw materials used per USD of GDP, 2010)	0,76 kg/\$	Smaller footprint than the EU-27 average of 0,97 kg/USD
	Sustainable Consumption and Production Policy Framework (2017)	D	No policy framework for SCP has been reported to the UN
	Change in emissions (production) vs change in GDP (2007-2017)	+60% / +14%	Unsustainable growth path: emissions are growing faster than GDP
Biodiversity & Forests	Terrestrial protected areas (% of total land area, 2020)	36,63%	CBD Target has been met for terrestrial ecosystems (17% by 2020)
	Threatened species (% of total evaluated species, 2019)	4,36%	Medium share of threatened species, risk missing SDG target 15.5
	Population around protected areas (% total pop., 10km buffer, 2015)	NA	No Data
	Forest area change (% change between 2015 and 2020)	0 %	Forest cover at equilibrium, SDG Target 15.2 achieved
	Sustainable forest management (% area with long-term plan, 2020)	NA	No Data
	Employment in forestry (number of full-time equivalents, 2015)	NA	No Data
Green and Smart Cities	Proportion of urban population living in slums (% in 2016)	NA	No Data
	Satisfaction with public transport (% satisfied, 2018)	NA	No Data
	Solid waste uncollected or dumped in the open (% of total, 2017)	NA	No Data
	Wastewater receiving primary treatment (% of total)	11,19%	Significant efforts needed to ensure at least full primary treatment
	Urban air pollution (µg/m³ of PM 2.5 particules, 2016)	18,99 µg/m³	Above EU 2020 target (18µg/m³) but below US Standard (35µg/m³)
	Alignment of national DRR strategies to Sendai Framework (0-1 Score)	NA	No Data
Sustainable Energy	Access to electricity (% of population, 2018)	100,00%	SDG Target 7.1 has been achieved
	Renewable energy (% of total energy consumption, 2016)	1,40%	Very low share of renewables, low contribution to SDG Target 7.2
	Renewable electricity (% of electricity production, 2015)	NA	No Data
	Access to clean cooking (% of total population with access, 2016)	>95%	Universal access to clean cooking has been achieved
	Fossil fuel subsidies (% of GDP, 2015)	0,47%	Within the range of subsidy shares from EU-27 MS
	Energy Intensity (megajoules per constant 2011 PPP GDP, 2017)	2,61 MJ/\$	Energy Intensity within range of EU-MS, below the EU-27 average
Food systems: from Farms to Forks	Rural poverty (% of rural population below 1\$90 a day, 2018)	NA	No Data
	Food security (% of population in food crisis or worse, 2019)	NA	No Data
	Nutrition (% of children under 5 who are stunted, 2019)	NA	No Data
	Fertilizer consumption (kg per hectare, 2016)	144,02 kg/ha	Within range of EU MS values (below EU overall use of 153 kg/ha)
	Land degradation (national area with declining productivity 1999-2013)	34,90%	Significant efforts needed to meet SDG Target 15.3 of 0% by 2030
	Agriculture and FOLU share of emissions (% of CO2eq in 2017)	4,71%	Low emission shares from Agriculture, Forestry and Other Land Use
Water & Oceans	Population using at least basic drinking water (% of pop., 2017)	98,89%	Some progress still needed to meet SDG Target 6.1 (100% by 2030)
	Population using at least basic sanitation services (% of pop., 2017)	94,90%	Further progress needed to meet SDG Target 6.2 (100% by 2030)
	Water scarcity (m³ of renewable freshwater per capita, 2014)	NA	No Data
	Water stress (water withdrawal as % of total available water, 2014)	NA	No Data
	Marine protected areas (% of total marine area, 2020)	7,60%	Significant efforts needed to achieve CBD Target of 10% by 2020
	Fish stocks overexploited or collapsed (% of fish stocks, 2014)	28,14%	SDG Target 14.4 (0% by 2020) not met, significant efforts needed

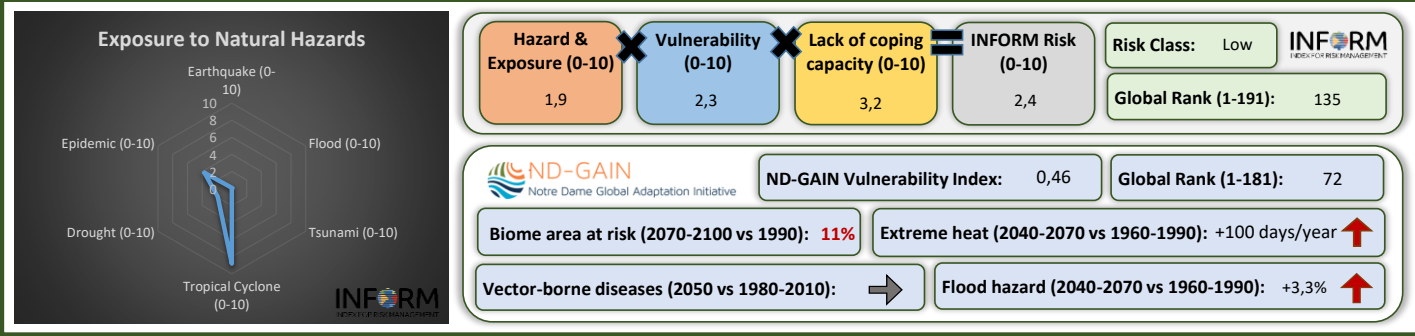
Greenhouse Gas Emission History (Production-based)



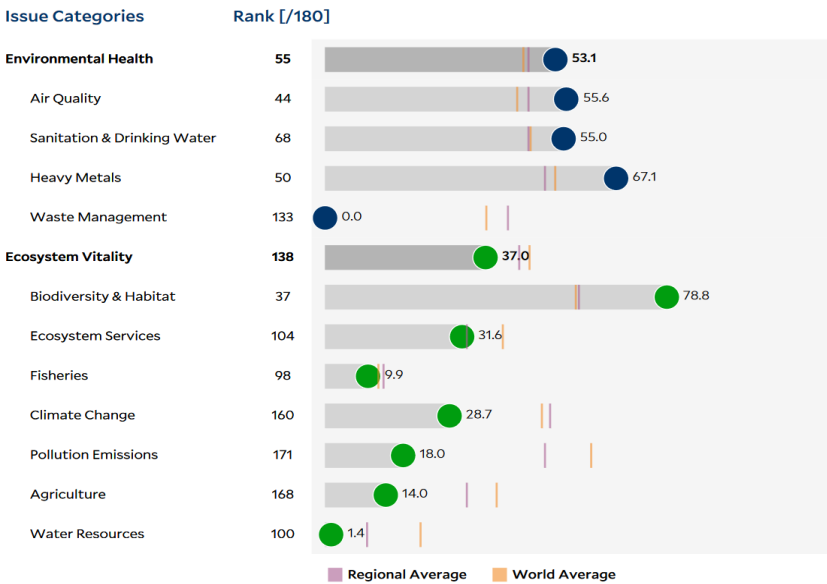
Historic Trends of selected indicators per Green Deal Pillar (Base 100)



Climate Adaptation Needs



Environmental Performance Index 2020



SDG Index 2020

(UN SDSN & Bertelsmann Stiftung)

