



Green Deal Country Fiche

Cambodia

Population in 2019
16,49 million habitants

Projected population in 2050
21,86 million habitants

Surface
181,0 thousands km²

Population density (2019)
91 habitants per km²

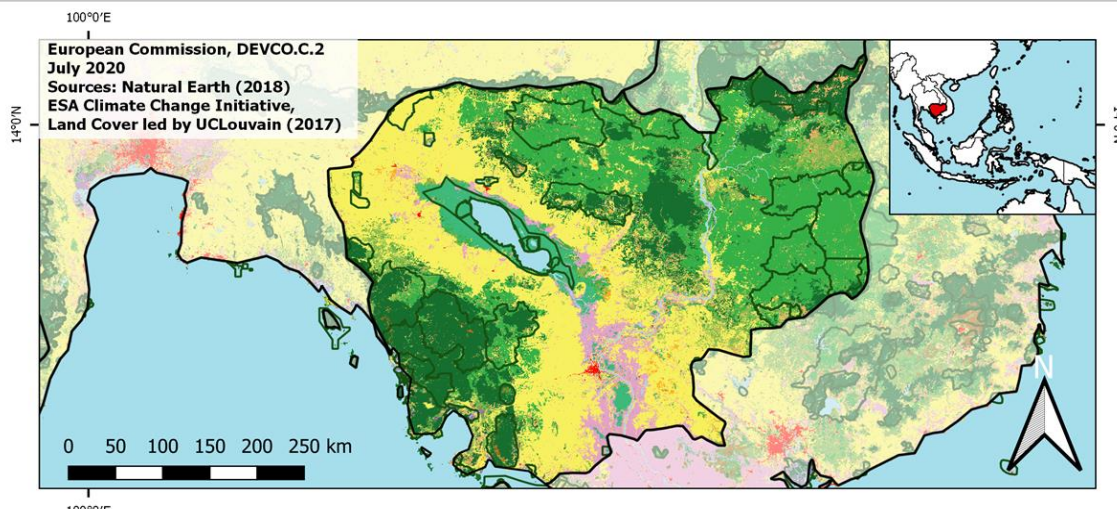
GDP per capita
1.643,12 US\$ (2019)

Population living below 1,90 \$/day
NA

Human Development Index
0,59 (2019, UN target: >0,8)

Legend

- Main Protected Areas
- Land Cover Classes**
- Cropland rainfed
- Cropland irrigated
- Mosaic crops/nat.veg
- Tropical dense forest
- Deciduous forest
- Coniferous forest
- Mixed forest
- Shrubland
- Grassland
- Sparse vegetation
- Swamp forest
- Mangrove
- Swamps
- Urban areas
- Bare areas
- Water bodies
- Permanent snow and ice



Share of global emissions (2018)
0,028%

NDC: Mitigation Summary

(NDC from 2020)

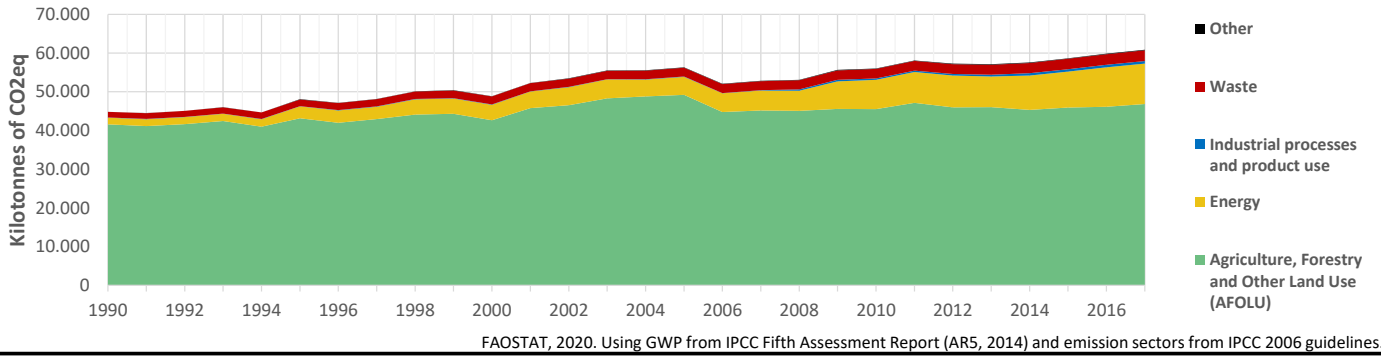
Cambodia aspires to reduce its GHG emissions by 41.7% by 2030 below the BAU levels of 154.9 MtCO₂eq/year. Mitigation actions are mostly conditional, estimated at USD 5.8 billion, covering forestry, building, energy, waste, transport and agriculture.

INTPA "NDC Group"

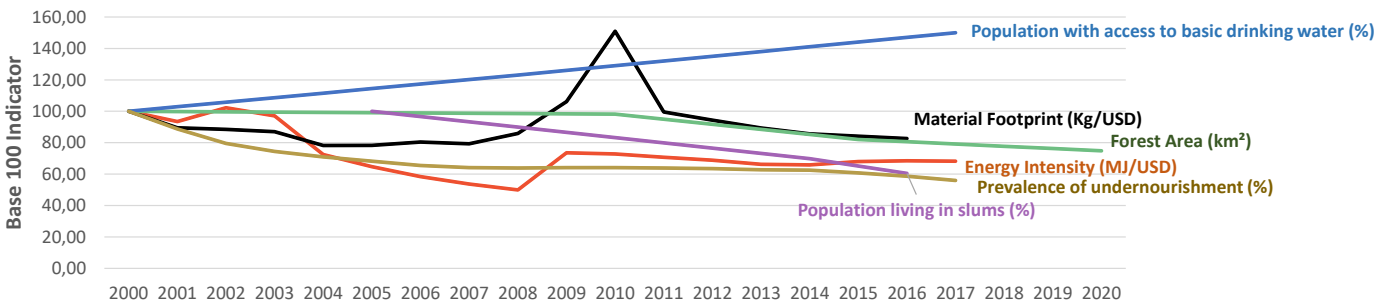
Group 3 - Suggested focus on adaptation for EU cooperation

Pillar	Indicator Name and Unit	Value	Interpretation
Green, circular and low-carbon economy	Ecological footprint (Consumption in global hectares per capita, 2017)	1,33 gh/cap	Within the global sustainable threshold of 1,6 gha per capita
	Recycling and composting rate (% of total solid waste, 2017)	NA	No Data
	Water productivity (USD of GDP per m ³ of water extracted, 2015)	5,9 \$/m ³	Low water productivity (minimum EU MS value : 10 \$/m ³)
	Material footprint (Kg of raw materials used per USD of GDP, 2010)	3,21 kg/\$	Highly resource-inefficient production and consumption practices
	Sustainable Consumption and Production Policy Framework (2017)	D	No policy framework for SCP has been reported to the UN
Biodiversity & Forests	Change in emissions (production) vs change in GDP (2007-2017)	+13% / +157%	Relative decoupling: emissions increased, but slower than GDP
	Terrestrial protected areas (% of total land area, 2020)	25,94%	CBD Target has been met for terrestrial ecosystems (17% by 2020)
	Threatened species (% of total evaluated species, 2019)	8,41%	High share of threatened species, risk missing SDG target 15.5
	Population around protected areas (% total pop., 10km buffer, 2015)	16,99%	Important share of population - consider landscape approach
	Forest area change (% change between 2015 and 2020)	-8,8 %	SDG Target 15.2 not achieved (halt deforestation by 2020)
Green and Smart Cities	Sustainable forest management (% area with long-term plan, 2020)	NA	No Data
	Employment in forestry (number of full-time equivalents, 2015)	15860 FTE	Low share of total employment (<0,5% of total labor force in 2015)
	Proportion of urban population living in slums (% in 2016)	47,70%	Further efforts needed for SDG Target 11.1 (upgrade by 2030)
	Satisfaction with public transport (% satisfied, 2018)	74,77%	High satisfaction with public transport (UN SDSN interpretation)
	Solid waste uncollected or dumped in the open (% of total, 2017)	NA	No Data
Sustainable Energy	Wastewater receiving primary treatment (% of total)	0,00%	Significant efforts needed to ensure at least full primary treatment
	Urban air pollution (µg/m ³ of PM 2.5 particules, 2016)	24,93 µg/m ³	Above EU 2020 target (18µg/m ³) but below US Standard (35µg/m ³)
	Alignment of national DRR strategies to Sendai Framework (0-1 Score)	NA	No Data
	Access to electricity (% of population, 2018)	91,55%	Some efforts still needed to meet SDG Target 7.1 of 100% by 2030
	Renewable energy (% of total energy consumption, 2016)	62,68%	High share of renewables in total energy consumption
Food systems: from Farms to Forks	Renewable electricity (% of electricity production, 2015)	46,42%	Medium share of renewable electricity
	Access to clean cooking (% of total population with access, 2018)	20,20%	Significant efforts needed for universal access to clean cooking
	Fossil fuel subsidies (% of GDP, 2015)	0,00%	No fossil-fuel subsidies, SDG Target 12.C achieved
	Energy Intensity (megajoules per constant 2011 PPP GDP, 2017)	5,79 MJ/\$	Energy Intensity above EU average, but still within range of EU MS
	Rural poverty (% of rural population below 1\$90 a day, 2018)	NA	No Data
Water & Oceans	Food security (% of pop in moderate or severe insecurity, 2016-2018)	44,90%	Significant efforts needed to meet SDG Target 2.1 of 0% by 2030
	Nutrition (% of children under 5 who are stunted, 2014)	32,40%	Significant efforts needed to meet SDG Target 2.2 of 0% by 2030
	Fertilizer consumption (kg per hectare, 2016)	17,39 kg/ha	Below lowest EU MS value (60 kg/ha in Romania)
	Land degradation (national area with declining productivity 1999-2013)	23,78%	Significant efforts needed to meet SDG Target 15.3 of 0% by 2030
	Agriculture and FOLU share of emissions (% of CO ₂ eq in 2017)	76,92%	High share of emissions - Key sector for climate mitigation
Water & Oceans	Population using at least basic drinking water (% of pop., 2017)	78,51%	Further progress needed to meet SDG Target 6.1 (100% by 2030)
	Population using at least basic sanitation services (% of pop., 2017)	59,20%	Significant efforts needed to meet SDG Target 6.2 (100% by 2030)
	Water scarcity (m ³ of renewable freshwater per capita, 2014)	7897 m ³ /cap	Water shortages should be only irregular/local (>1700m ³ /capita)
	Water stress (water withdrawal as % of total available water, 2014)	0,61%	Low water stress (less than 25% of resource extraction)
	Marine protected areas (% of total marine area, 2020)	0,18%	Significant efforts needed to achieve CBD Target of 10% by 2020
Fish stocks overexploited or collapsed (% of fish stocks, 2014)	44,86%	SDG Target 14.4 (0% by 2020) not met, significant efforts needed	

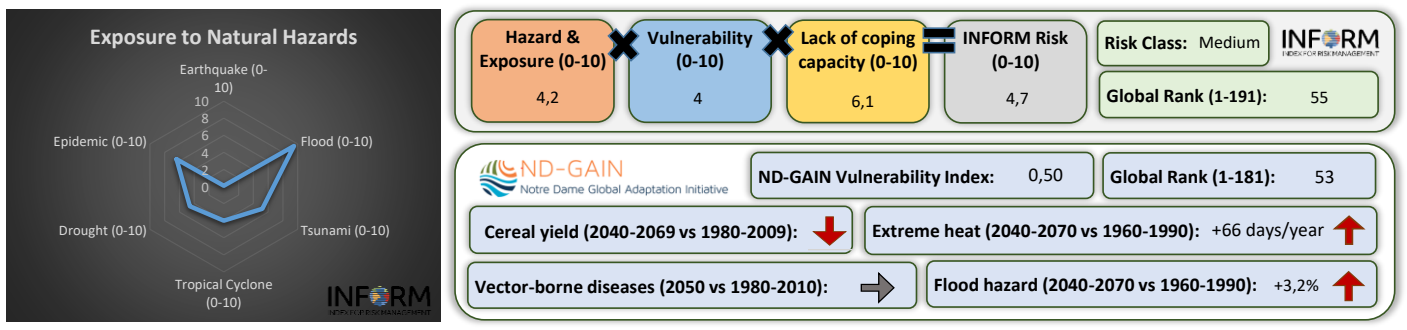
Greenhouse Gas Emission History (Production-based)



Historic Trends of selected indicators per Green Deal Pillar (Base 100)



Climate Adaptation Needs



Environmental Performance Index 2020

2020 EPI Country Rank (out of 180)

139

2020 EPI Score [0=worst, 100=best]

33,6



SDG Index 2020

(UN SDSN & Bertelsmann Stiftung)



Legend:

- SDG achieved
- Challenges remain
- Significant challenges remain
- Major challenges remain
- Information unavailable