



## Green Deal Country Fiche

Chile

Population in 2019  
18,95 million habitants

Projected population in 2050  
20,32 million habitants

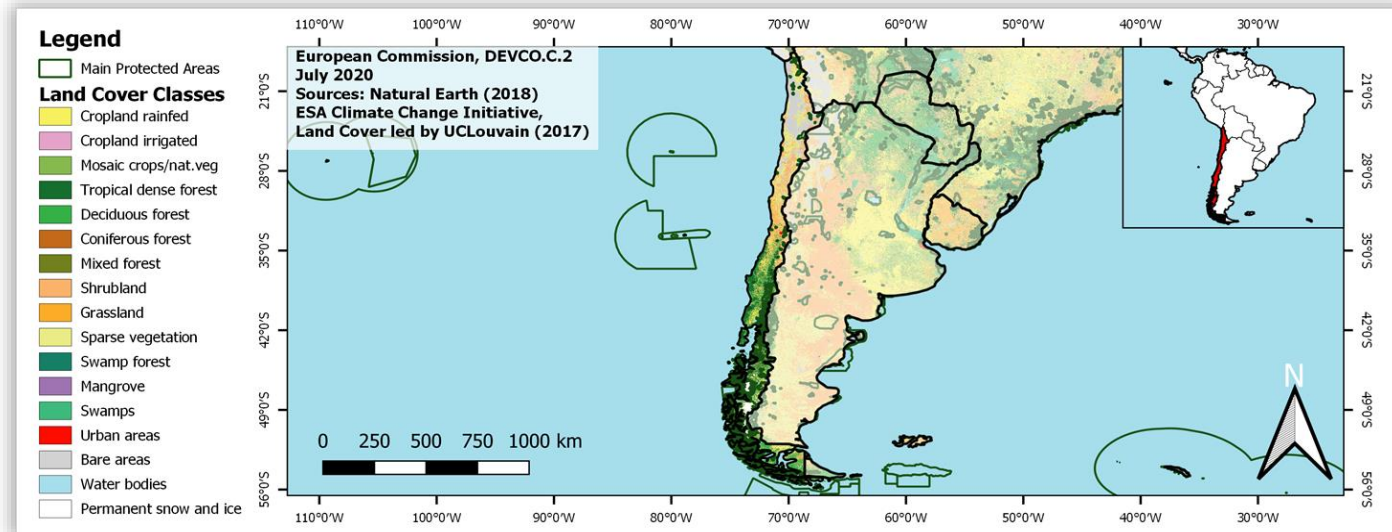
Surface  
756,1 thousands km<sup>2</sup>

Population density (2019)  
25 habitants per km<sup>2</sup>

GDP per capita  
14.896,45 US\$ (2019)

Population living below 1,90 \$/day  
0,30 % in 2017

Human Development Index  
0,85 (2019, UN target: >0,8)



Share of global emissions (2018)  
0,235%

### NDC: Mitigation Summary

(NDC from 2020)

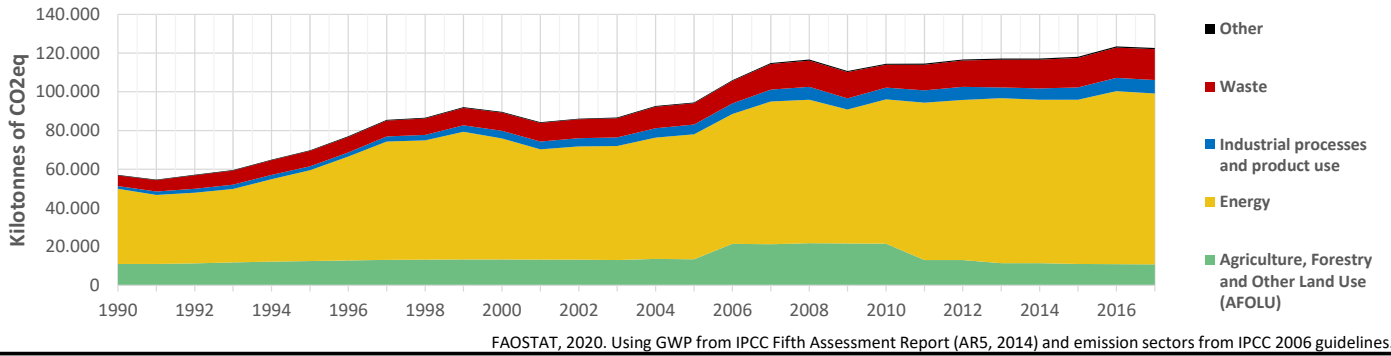
Chile commits to a GHG emission budget of maximum 1,100 MtCO<sub>2</sub>eq for 2020-2030, with a GHG emissions maximum (peak) by 2025, and a GHG emissions level of 95 MtCO<sub>2</sub>eq by 2030 (unconditional). Focus sectors: Energy, industrial processes, agriculture, re,

### INTPA "NDC Group"

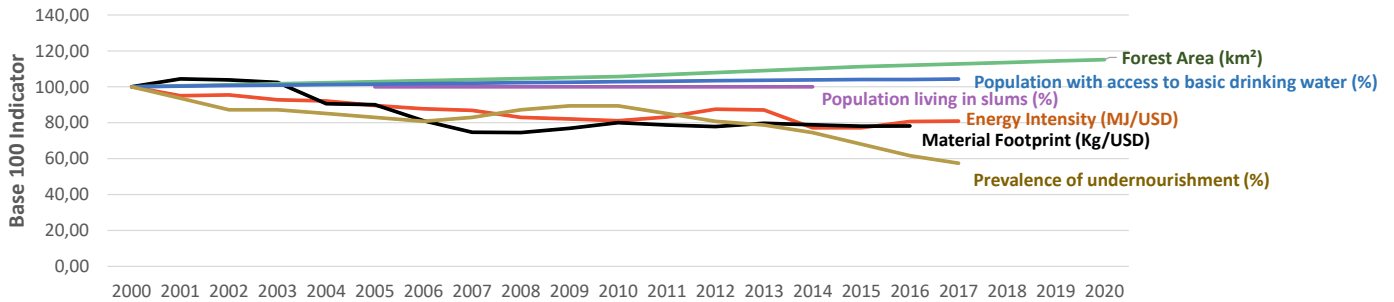
Group 2 - Suggested EU focus on both Mitigation and Adaptation

Pillar	Indicator Name and Unit	Value	Interpretation
Green, circular and low-carbon economy	Ecological footprint (Consumption in global hectares per capita, 2017)	4,28 gh/cap	Above the global sustainable threshold of 1,6 gha per capita
	Recycling and composting rate (% of total solid waste, 2017)	<5%	No or very low rate of recycling and composting (min EU MS = 7%)
	Water productivity (USD of GDP per m <sup>3</sup> of water extracted, 2017)	6,41 \$/m <sup>3</sup>	Low water productivity (minimum EU MS value : 10 \$/m <sup>3</sup> )
	Material footprint (Kg of raw materials used per USD of GDP, 2010)	1,11 kg/\$	Larger footprint than EU average (0,97), but within range of EU MS
	Sustainable Consumption and Production Policy Framework (2017)	C2	No SCP policy instrument or coordination mechanism reported
	Change in emissions (production) vs change in GDP (2007-2017)	+8% / +60%	Relative decoupling: emissions increased, but slower than GDP
Biodiversity & Forests	Terrestrial protected areas (% of total land area, 2020)	20,31%	CBD Target has been met for terrestrial ecosystems (17% by 2020)
	Threatened species (% of total evaluated species, 2019)	11,71%	High share of threatened species, risk missing SDG target 15.5
	Population around protected areas (% total pop., 10km buffer, 2015)	25,35%	Important share of population - consider landscape approach
	Forest area change (% change between 2015 and 2020)	+3,49 %	Forest cover is increasing, SDG Target 15.2 achieved
	Sustainable forest management (% area with long-term plan, 2020)	0,08%	Significant efforts needed to meet SDG Target 15.2 (100% by 2020)
Green and Smart Cities	Employment in forestry (number of full-time equivalents, 2015)	116240 FTE	Significant sector for employment (1,31% total labor force in 2015)
	Proportion of urban population living in slums (% in 2016)	9,00%	SDG Target 11.1 not yet met, but in range of EU MS values
	Satisfaction with public transport (% satisfied, 2018)	58,11%	Medium satisfaction (UN SDSN interpretation)
	Solid waste uncollected or dumped in the open (% of total, 2017)	10-20%	Further efforts are needed to meet SDG Target 11.6
	Wastewater receiving primary treatment (% of total)	72,00%	Further efforts needed to ensure at least full primary treatment
Sustainable Energy	Urban air pollution (µg/m <sup>3</sup> of PM 2.5 particules, 2016)	23,1 µg/m <sup>3</sup>	Above EU 2020 target (18µg/m <sup>3</sup> ) but below US Standard (35µg/m <sup>3</sup> )
	Alignment of national DRR strategies to Sendai Framework (0-1, 2019)	0,90	Substantial alignment with the Sendai Framework (1)
	Access to electricity (% of population, 2018)	100,00%	SDG Target 7.1 has been achieved
	Renewable energy (% of total energy consumption, 2016)	24,52%	Higher share of renewables than the EU 2020 target of 20%
	Renewable electricity (% of electricity production, 2015)	43,60%	Medium share of renewable electricity
	Access to clean cooking (% of total population with access, 2016)	92,28%	Some efforts still needed towards universal access to clean cooking
Food systems: from Farms to Forks	Fossil fuel subsidies (% of GDP, 2015)	0,00%	No fossil-fuel subsidies, SDG Target 12.C achieved
	Energy Intensity (megajoules per constant 2011 PPP GDP, 2017)	3,9 MJ/\$	Energy Intensity above EU average, but still within range of EU MS
	Rural poverty (% of rural population below 1\$90 a day, 2017)	0,10%	Some efforts needed to achieve SDG Target 1.1 (0% by 2030)
	Food security (% of pop in moderate or severe insecurity, 2016-2018)	13,60%	Progress is still needed to meet SDG Target 2.1 of 0% by 2030
	Nutrition (% of children under 5 who are stunted, 2014)	1,80%	Progress is still needed to meet SDG Target 2.2 of 0% by 2030
	Fertilizer consumption (kg per hectare, 2016)	293,84 kg/ha	Among top 25% of countries with most intensive fertilizer use
Water & Oceans	Land degradation (national area with declining productivity 1999-2013)	3,80%	Progress is still needed to meet SDG Target 15.3 of 0% by 2030
	Agriculture and FOLU share of emissions (% of CO <sub>2</sub> eq in 2017)	8,80%	Low emission shares from Agriculture, Forestry and Other Land Use
	Population using at least basic drinking water (% of pop., 2017)	99,83%	Some progress still needed to meet SDG Target 6.1 (100% by 2030)
	Population using at least basic sanitation services (% of pop., 2017)	100,00%	SDG Target 6.2 has been achieved
	Water scarcity (m <sup>3</sup> of renewable freshwater per capita, 2014)	50245 m <sup>3</sup> /cap	Water shortages should be only irregular/local (>1700m <sup>3</sup> /capita)
	Water stress (water withdrawal as % of total available water, 2014)	5,50%	Low water stress (less than 25% of resource extraction)
Marine protected areas (% of total marine area, 2020)	40,60%	Aichi Target 11 of the CBD has been met for marine ecosystems	
Fish stocks overexploited or collapsed (% of fish stocks, 2014)	41,49%	SDG Target 14.4 (0% by 2020) not met, significant efforts needed	

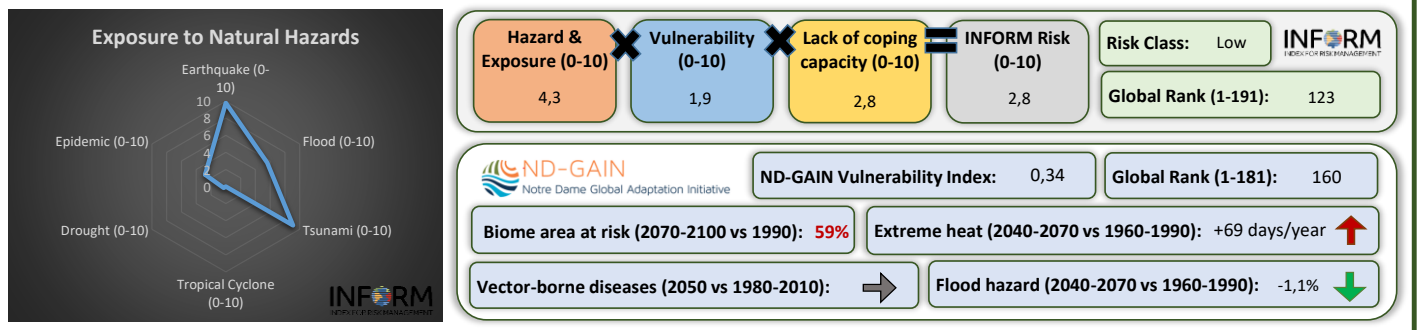
## Greenhouse Gas Emission History (Production-based)



## Historic Trends of selected indicators per Green Deal Pillar (Base 100)



## Climate Adaptation Needs



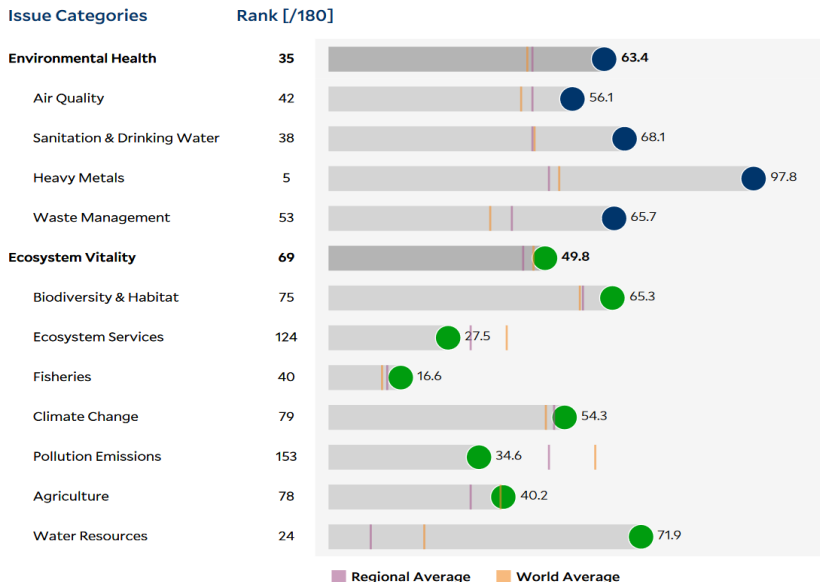
## Environmental Performance Index 2020

2020 EPI Country Rank (out of 180)

44

2020 EPI Score [0=worst, 100=best]

55,3



## SDG Index 2020

(UN SDSN & Bertelsmann Stiftung)

