



Green Deal Country Fiche

Ghana

Population in 2019
30,42 million habitants

Projected population in 2050
52,02 million habitants

Surface
238,5 thousands km²

Population density (2019)
128 habitants per km²

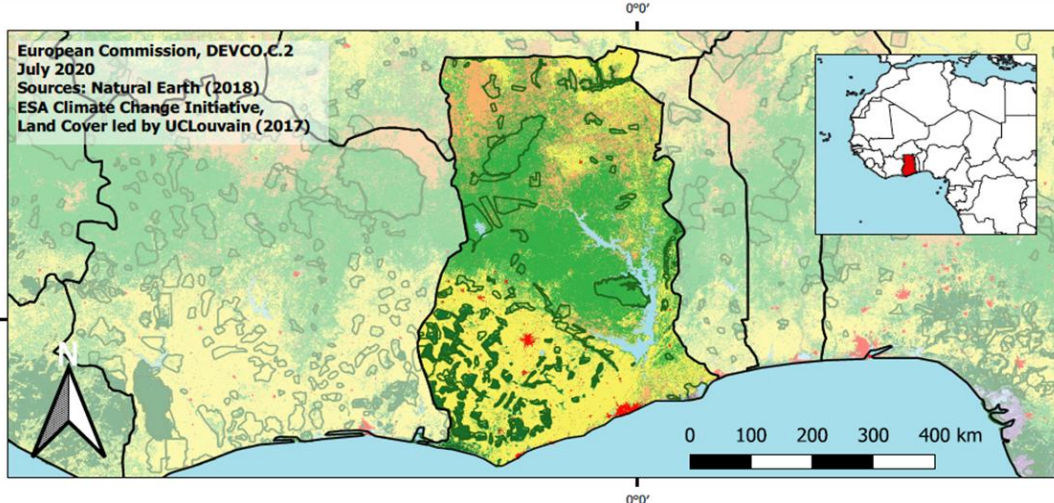
GDP per capita
2.202,12 US\$ (2019)

Population living below 1,90 \$/day
13,00 % in 2016

Human Development Index
0,61 (2019, UN target: >0,8)

Legend

- Main Protected Areas
- Land Cover Classes**
- Cropland rainfed
- Cropland irrigated
- Mosaic crops/nat.veg
- Tropical dense forest
- Deciduous forest
- Coniferous forest
- Mixed forest
- Shrubland
- Grassland
- Sparse vegetation
- Swamp forest
- Mangrove
- Swamps
- Urban areas
- Bare areas
- Water bodies
- Permanent snow and ice



Share of global
emissions (2018)
0,050%

NDC: Mitigation Summary

(NDC from 2016)

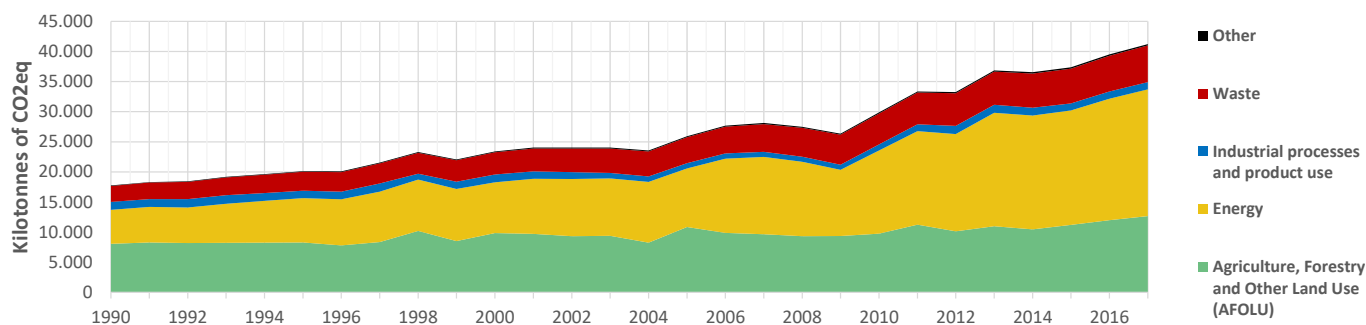
Ghana aims to reduce its GHG emissions by 45% (including 15% unconditional) by 2030 compared to the business-as-usual scenario of 73.95 MtCO₂eq. Priority sectors include energy, transport, industrial process and product use, AFOLU and waste.

INTPA "NDC Group"

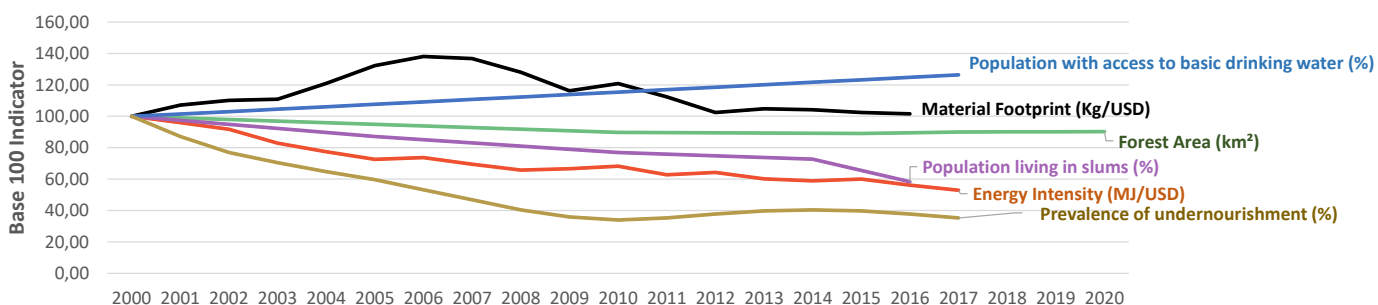
Group 3 - Suggested focus on adaptation for EU cooperation

Pillar	Indicator Name and Unit	Value	Interpretation
Green, circular and low-carbon economy	Ecological footprint (Consumption in global hectares per capita, 2017)	2,04 gh/cap	Above the global sustainable threshold of 1,6 gha per capita
	Recycling and composting rate (% of total solid waste, 2017)	NA	No Data
	Water productivity (USD of GDP per m³ of water extracted, 2010)	18,32 \$/m³	Less water efficient than EU average, but within range of EU MS
	Material footprint (Kg of raw materials used per USD of GDP, 2010)	2,07 kg/\$	Larger footprint than EU average (0,97), but within range of EU MS
	Sustainable Consumption and Production Policy Framework (2017)	D	No policy framework for SCP has been reported to the UN
Biodiversity & Forests	Change in emissions (production) vs change in GDP (2007-2017)	+57% / +138%	Relative decoupling: emissions increased, but slower than GDP
	Terrestrial protected areas (% of total land area, 2020)	15,01%	Further progress is needed to meet CBD Target of 17% by 2020
	Threatened species (% of total evaluated species, 2019)	7,58%	High share of threatened species, risk missing SDG target 15.5
	Population around protected areas (% total pop., 10km buffer, 2015)	58,48%	Very significant share of population - Landscape approach is key
	Forest area change (% change between 2015 and 2020)	+1,34 %	Forest cover is increasing, SDG Target 15.2 achieved
Green and Smart Cities	Sustainable forest management (% area with long-term plan, 2020)	24,92%	Significant efforts needed to meet SDG Target 15.2 (100% by 2020)
	Employment in forestry (number of full-time equivalents, 2015)	3550 FTE	Low share of total employment (<0,5% of total labor force in 2015)
	Proportion of urban population living in slums (% in 2016)	30,40%	Further efforts needed for SDG Target 11.1 (upgrade by 2030)
	Satisfaction with public transport (% satisfied, 2018)	49,79%	Medium satisfaction (UN SDSN interpretation)
	Solid waste uncollected or dumped in the open (% of total, 2017)	NA	No Data
Sustainable Energy	Wastewater receiving primary treatment (% of total)	0,00%	Significant efforts needed to ensure at least full primary treatment
	Urban air pollution (µg/m³ of PM 2.5 particules, 2016)	31,07 µg/m³	Above EU 2020 target (18µg/m³) but below US Standard (35µg/m³)
	Alignment of national DRR strategies to Sendai Framework (0-1 Score)	NA	No Data
	Access to electricity (% of population, 2018)	82,39%	Further efforts still needed to meet SDG Target 7.1 of 100% by 2030
	Renewable energy (% of total energy consumption, 2016)	41,96%	Higher share of renewables than the EU 2020 target of 20%
Food systems: from Farms to Forks	Renewable electricity (% of electricity production, 2015)	50,89%	High share of renewable electricity
	Access to clean cooking (% of total population with access, 2018)	24,90%	Significant efforts needed for universal access to clean cooking
	Fossil fuel subsidies (% of GDP, 2015)	0,00%	No fossil-fuel subsidies, SDG Target 12.C achieved
	Energy Intensity (megajoules per constant 2011 PPP GDP, 2017)	3,28 MJ/\$	Energy Intensity within range of EU-MS, below the EU-27 average
	Rural poverty (% of rural population below \$190 a day, 2016)	24,30%	Further efforts needed to achieve SDG Target 1.1 (0% by 2030)
Water & Oceans	Food security (% of pop in moderate or severe insecurity, 2016-2018)	49,60%	Significant efforts needed to meet SDG Target 2.1 of 0% by 2030
	Nutrition (% of children under 5 who are stunted, 2017)	17,50%	Significant efforts needed to meet SDG Target 2.2 of 0% by 2030
	Fertilizer consumption (kg per hectare, 2016)	20,88 kg/ha	Below lowest EU MS value (60 kg/ha in Romania)
	Land degradation (national area with declining productivity 1999-2013)	6,37%	Progress is still needed to meet SDG Target 15.3 of 0% by 2030
	Agriculture and FOLU share of emissions (% of CO ₂ eq in 2017)	30,69%	Medium share of emissions - Relevant for climate mitigation
Water & Oceans	Population using at least basic drinking water (% of pop., 2017)	81,45%	Further progress needed to meet SDG Target 6.1 (100% by 2030)
	Population using at least basic sanitation services (% of pop., 2017)	18,50%	Significant efforts needed to meet SDG Target 6.2 (100% by 2030)
	Water scarcity (m³ of renewable freshwater per capita, 2014)	1124 m³/cap	Water shortages may appear regularly
	Water stress (water withdrawal as % of total available water, 2014)	2,79%	Low water stress (less than 25% of resource extraction)
	Marine protected areas (% of total marine area, 2020)	0,10%	Significant efforts needed to achieve CBD Target of 10% by 2020
	Fish stocks overexploited or collapsed (% of fish stocks, 2014)	37,02%	SDG Target 14.4 (0% by 2020) not met, significant efforts needed

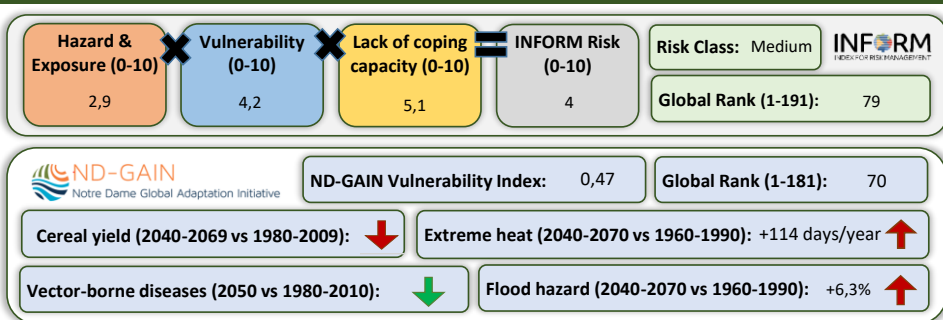
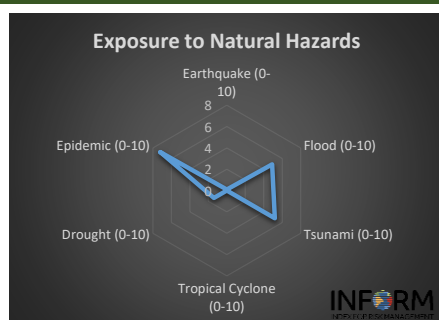
Greenhouse Gas Emission History (Production-based)



Historic Trends of selected indicators per Green Deal Pillar (Base 100)



Climate Adaptation Needs



Environmental Performance Index 2020

2020 EPI Country Rank (out of 180)

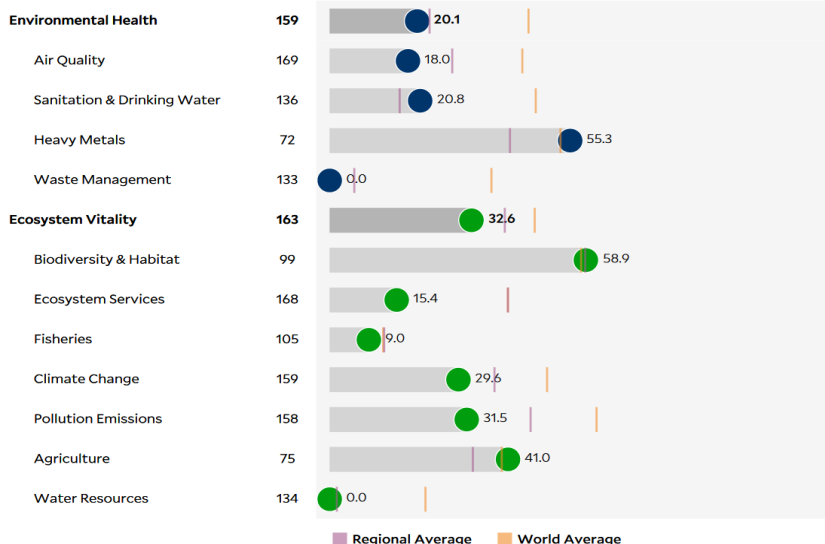
168

2020 EPI Score [0=worst, 100=best]

27,6

Issue Categories

Rank [/180]



SDG Index 2020

(UN SDSN & Bertelsmann Stiftung)

