



## Green Deal Country Fiche

### Jamaica

Population in 2019  
2,95 million habitants

Projected population in 2050  
2,96 million habitants

Surface  
11,0 thousands km<sup>2</sup>

Population density (2019)  
268 habitants per km<sup>2</sup>

GDP per capita  
5.582,26 US\$ (2019)

Population living below 1,90 \$/day  
NA

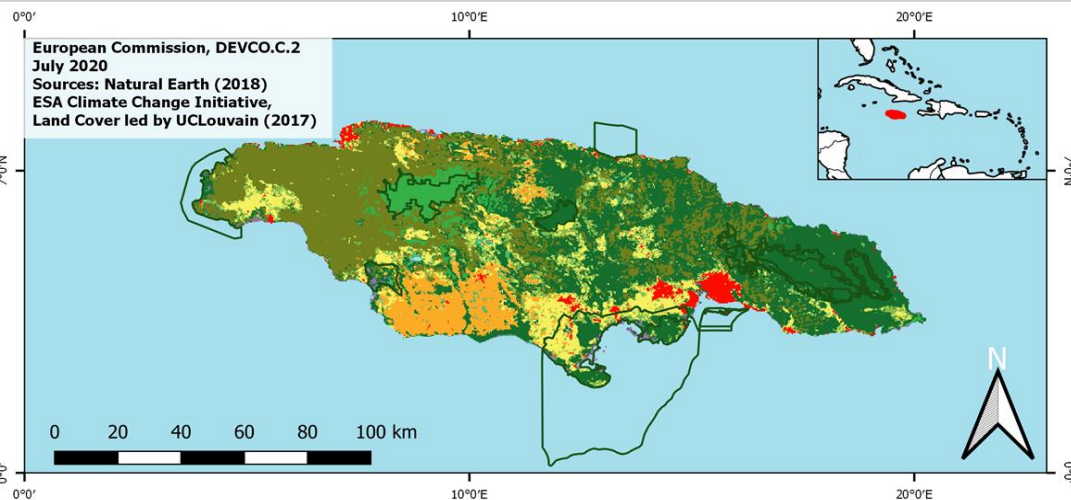
Human Development Index  
0,73 (2019, UN target: >0,8)

#### Legend

□ Main Protected Areas

#### Land Cover Classes

- Cropland rainfed
- Cropland irrigated
- Mosaic crops/nat.veg
- Tropical dense forest
- Deciduous forest
- Coniferous forest
- Mixed forest
- Shrubland
- Grassland
- Sparse vegetation
- Swamp forest
- Mangrove
- Swamps
- Urban areas
- Bare areas
- Water bodies
- Permanent snow and ice



Share of global emissions (2018)  
0,022%

#### NDC: Mitigation Summary

(NDC from 2020)

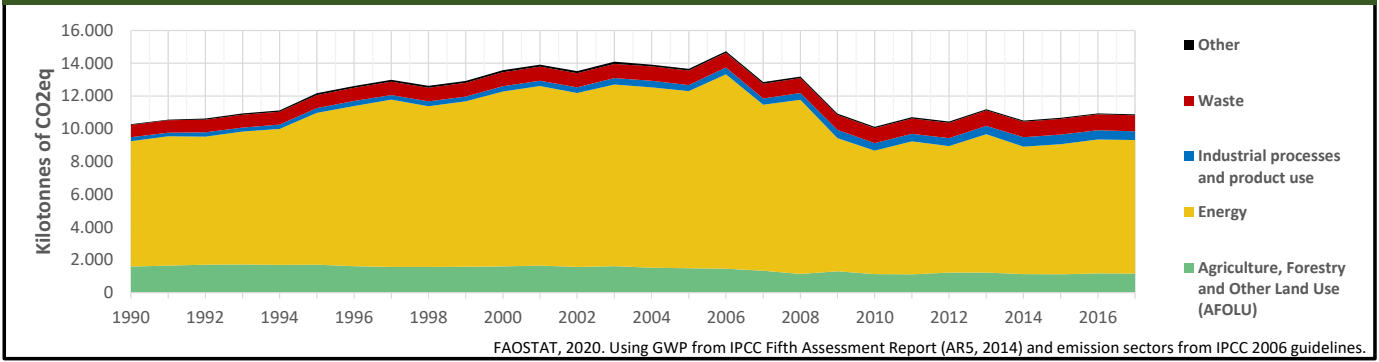
Jamaica commits to reduce its GHG emissions by 28.5% (including 25.4% unconditional) relative to business-as-usual emissions in 2030. Action focuses on energy, land-use change and forestry.

#### INTPA "NDC Group"

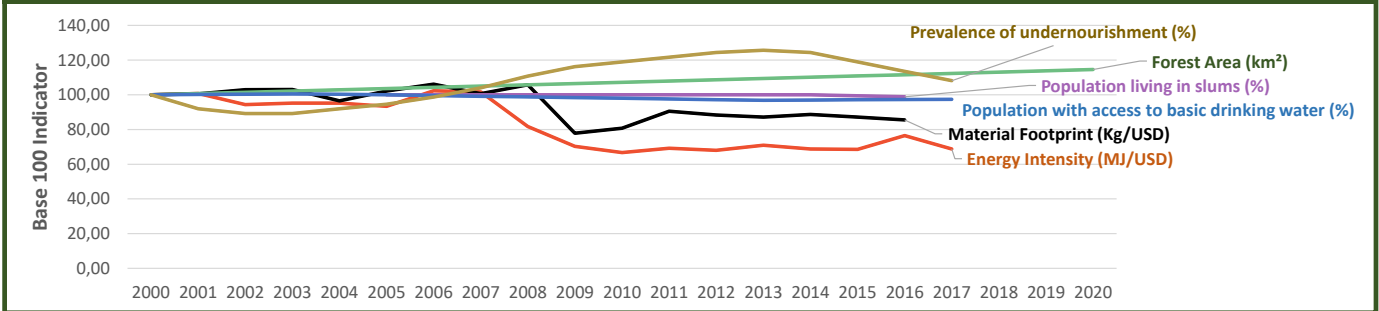
Group 3 - Suggested focus on adaptation for EU cooperation

Pillar	Indicator Name and Unit	Value	Interpretation
Green, circular and low-carbon economy	Ecological footprint (Consumption in global hectares per capita, 2017)	1,81 gh/cap	Above the global sustainable threshold of 1,6 gha per capita
	Recycling and composting rate (% of total solid waste, 2017)	<5%	No or very low rate of recycling and composting (min EU MS = 7%)
	Water productivity (USD of GDP per m <sup>3</sup> of water extracted, 2017)	8,65 \$/m <sup>3</sup>	Low water productivity (minimum EU MS value : 10 \$/m <sup>3</sup> )
	Material footprint (Kg of raw materials used per USD of GDP, 2010)	1,59 kg/\$	Larger footprint than EU average (0,97), but within range of EU MS
	Sustainable Consumption and Production Policy Framework (2017)	C2	No SCP policy instrument or coordination mechanism reported
	Change in emissions (production) vs change in GDP (2007-2017)	-14% / +15%	Absolute decoupling: emissions have decreased in absolute terms
Biodiversity & Forests	Terrestrial protected areas (% of total land area, 2020)	15,92%	Further progress is needed to meet CBD Target of 17% by 2020
	Threatened species (% of total evaluated species, 2019)	14,35%	High share of threatened species, risk missing SDG target 15.5
	Population around protected areas (% total pop., 10km buffer, 2015)	81,55%	Very significant share of population - Landscape approach is key
	Forest area change (% change between 2015 and 2020)	+3,36 %	Forest cover is increasing, SDG Target 15.2 achieved
	Sustainable forest management (% area with long-term plan, 2020)	18,32%	Significant efforts needed to meet SDG Target 15.2 (100% by 2020)
	Employment in forestry (number of full-time equivalents, 2015)	260 FTE	Low share of total employment (<0,5% of total labor force in 2015)
Green and Smart Cities	Proportion of urban population living in slums (% in 2016)	59,80%	Significant efforts needed for SDG Target 11.1 (upgrade by 2030)
	Satisfaction with public transport (% satisfied, 2018)	72,21%	High satisfaction with public transport (UN SDSN interpretation)
	Solid waste uncollected or dumped in the open (% of total, 2017)	38%	Further efforts are needed to meet SDG Target 11.6
	Wastewater receiving primary treatment (% of total)	10,00%	Significant efforts needed to ensure at least full primary treatment
	Urban air pollution (µg/m <sup>3</sup> of PM 2.5 particules, 2016)	13,65 µg/m <sup>3</sup>	Within EU 2020 target (18µg/m <sup>3</sup> ), above WHO guideline (10µg/m <sup>3</sup> )
	Alignment of national DRR strategies to Sendai Framework (0-1 Score)	NA	No Data
Sustainable Energy	Access to electricity (% of population, 2018)	98,93%	Some efforts still needed to meet SDG Target 7.1 of 100% by 2030
	Renewable energy (% of total energy consumption, 2016)	12,65%	Low share, increases needed to contribute to SDG Target 7.2
	Renewable electricity (% of electricity production, 2015)	10,26%	Low share, increases needed to contribute to SDG Target 7.2
	Access to clean cooking (% of total population with access, 2018)	91,70%	Some efforts still needed towards universal access to clean cooking
	Fossil fuel subsidies (% of GDP, 2015)	0,00%	No fossil-fuel subsidies, SDG Target 12.C achieved
	Energy Intensity (megajoules per constant 2011 PPP GDP, 2017)	4,77 MJ/\$	Energy Intensity above EU average, but still within range of EU MS
Food systems: from Farms to Forks	Rural poverty (% of rural population below 1\$90 a day, 2018)	NA	No Data
	Food security (% of population in food crisis or worse, 2019)	NA	No Data
	Nutrition (% of children under 5 who are stunted, 2014)	6,00%	Progress is still needed to meet SDG Target 2.2 of 0% by 2030
	Fertilizer consumption (kg per hectare, 2016)	57,25 kg/ha	Below lowest EU MS value (60 kg/ha in Romania)
	Land degradation (national area with declining productivity 1999-2013)	0,29%	Progress is still needed to meet SDG Target 15.3 of 0% by 2030
	Agriculture and FOLU share of emissions (% of CO2eq in 2017)	10,69%	Medium share of emissions - Relevant for climate mitigation
Water & Oceans	Population using at least basic drinking water (% of pop., 2017)	90,65%	Further progress needed to meet SDG Target 6.1 (100% by 2030)
	Population using at least basic sanitation services (% of pop., 2017)	87,30%	Further progress needed to meet SDG Target 6.2 (100% by 2030)
	Water scarcity (m <sup>3</sup> of renewable freshwater per capita, 2014)	3780 m <sup>3</sup> /cap	Water shortages should be only irregular/local (>1700m <sup>3</sup> /capita)
	Water stress (water withdrawal as % of total available water, 2014)	11,34%	Low water stress (less than 25% of resource extraction)
	Marine protected areas (% of total marine area, 2020)	0,72%	Significant efforts needed to achieve CBD Target of 10% by 2020
	Fish stocks overexploited or collapsed (% of fish stocks, 2014)	74,14%	SDG Target 14.4 (0% by 2020) not met, significant efforts needed

## Greenhouse Gas Emission History (Production-based)



## Historic Trends of selected indicators per Green Deal Pillar (Base 100)



## Climate Adaptation Needs

