



## Green Deal Country Fiche

### Kenya

Population in 2019  
52,57 million habitants

Projected population in 2050  
91,58 million habitants

Surface  
580,4 thousands km<sup>2</sup>

Population density (2019)  
91 habitants per km<sup>2</sup>

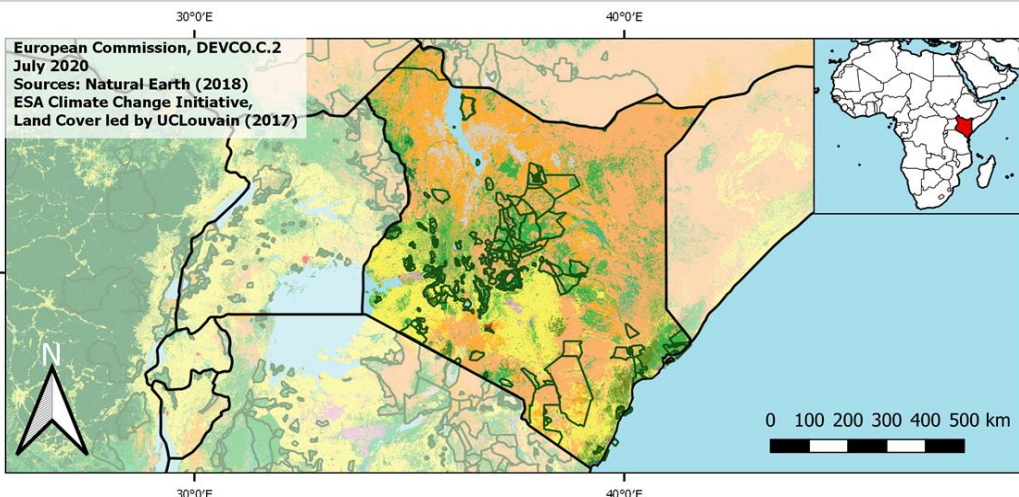
GDP per capita  
1.816,55 US\$ (2019)

Population living below 1,90 \$/day  
37,10 % in 2015

Human Development Index  
0,60 (2019, UN target: >0,8)

#### Legend

- Main Protected Areas
- Land Cover Classes**
  - Cropland rainfed
  - Cropland irrigated
  - Mosaic crops/nat.veg
  - Tropical dense forest
  - Deciduous forest
  - Coniferous forest
  - Mixed forest
  - Shrubland
  - Grassland
  - Sparse vegetation
  - Swamp forest
  - Mangrove
  - Swamps
  - Urban areas
  - Bare areas
  - Water bodies
  - Permanent snow and ice



Share of global  
emissions (2018)  
0,051%

#### NDC: Mitigation Summary

(NDC from 2020)

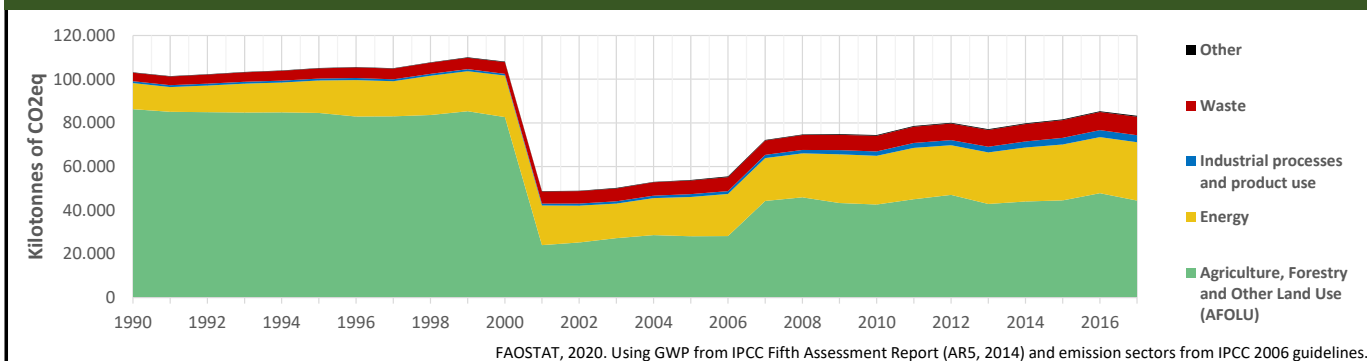
Kenya commits to abate its GHG emissions by 32% by 2030 relative to the BAU scenario of 143 MtCO<sub>2</sub>eq. Mitigation actions focus on energy, forestry, nature-based solutions, waste and transport and would cost an estimated USD 62 billion (87% conditional).

#### INTPA "NDC Group"

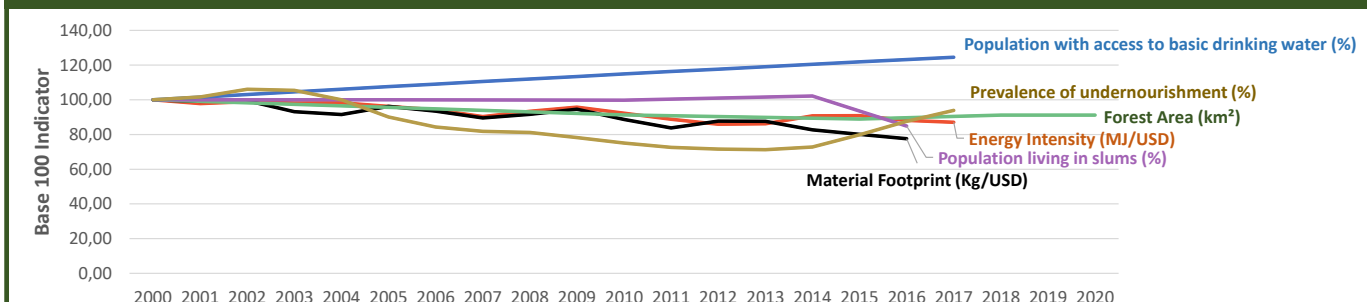
Group 3 - Suggested focus on adaptation for EU cooperation

Pillar	Indicator Name and Unit	Value	Interpretation
Green, circular and low-carbon economy	Ecological footprint (Consumption in global hectares per capita, 2017)	0,99 gh/cap	Within the global sustainable threshold of 1,6 gha per capita
	Recycling and composting rate (% of total solid waste, 2017)	NA	No Data
	Water productivity (USD of GDP per m <sup>3</sup> of water extracted, 2017)	11,25 \$/m <sup>3</sup>	Less water efficient than EU average, but within range of EU MS
	Material footprint (Kg of raw materials used per USD of GDP, 2010)	2,61 kg/\$	Larger footprint than all EU-27 Member States
	Sustainable Consumption and Production Policy Framework (2017)	C2	No SCP policy instrument or coordination mechanism reported
	Change in emissions (production) vs change in GDP (2007-2017)	+16% / +146%	Relative decoupling: emissions increased, but slower than GDP
Biodiversity & Forests	Terrestrial protected areas (% of total land area, 2020)	12,41%	Further progress is needed to meet CBD Target of 17% by 2020
	Threatened species (% of total evaluated species, 2019)	10,44%	High share of threatened species, risk missing SDG target 15.5
	Population around protected areas (% total pop., 10km buffer, 2015)	44,99%	Very significant share of population - Landscape approach is key
	Forest area change (% change between 2015 and 2020)	+2,52 %	Forest cover is increasing, SDG Target 15.2 achieved
	Sustainable forest management (% area with long-term plan, 2020)	4,23%	Significant efforts needed to meet SDG Target 15.2 (100% by 2020)
	Employment in forestry (number of full-time equivalents, 2015)	NA	No Data
Green and Smart Cities	Proportion of urban population living in slums (% in 2016)	46,50%	Further efforts needed for SDG Target 11.1 (upgrade by 2030)
	Satisfaction with public transport (% satisfied, 2018)	54,99%	Medium satisfaction (UN SDSN interpretation)
	Solid waste uncollected or dumped in the open (% of total, 2017)	NA	No Data
	Wastewater receiving primary treatment (% of total)	10,00%	Significant efforts needed to ensure at least full primary treatment
	Urban air pollution (µg/m <sup>3</sup> of PM 2.5 particules, 2016)	25,78 µg/m <sup>3</sup>	Above EU 2020 target (18µg/m <sup>3</sup> ) but below US Standard (35µg/m <sup>3</sup> )
	Alignment of national DRR strategies to Sendai Framework (0-1 Score)	NA	No Data
Sustainable Energy	Access to electricity (% of population, 2018)	75,00%	Further efforts still needed to meet SDG Target 7.1 of 100% by 2030
	Renewable energy (% of total energy consumption, 2016)	71,85%	High share of renewables in total energy consumption
	Renewable electricity (% of electricity production, 2015)	87,51%	High share of renewable electricity
	Access to clean cooking (% of total population with access, 2018)	15,00%	Significant efforts needed for universal access to clean cooking
	Fossil fuel subsidies (% of GDP, 2015)	0,23%	Within the range of subsidy shares from EU-27 MS
	Energy Intensity (megajoules per constant 2011 PPP GDP, 2017)	7,61 MJ/\$	Energy Intensity is above all EU-27 MS values
Food systems: from Farms to Forks	Rural poverty (% of rural population below \$90 a day, 2015)	48,20%	Significant efforts needed to achieve SDG Target 1.1 (0% by 2030)
	Food security (% of population in food crisis or worse, 2019)	22,00%	Significant efforts needed to meet SDG Target 2.1 of 0% by 2030
	Nutrition (% of children under 5 who are stunted, 2014)	26,20%	Significant efforts needed to meet SDG Target 2.2 of 0% by 2030
	Fertilizer consumption (kg per hectare, 2016)	38,18 kg/ha	Below lowest EU MS value (60 kg/ha in Romania)
	Land degradation (national area with declining productivity 1999-2013)	25,31%	Significant efforts needed to meet SDG Target 15.3 of 0% by 2030
	Agriculture and FOLU share of emissions (% of CO <sub>2</sub> eq in 2017)	53,34%	High share of emissions - Key sector for climate mitigation
Water & Oceans	Population using at least basic drinking water (% of pop., 2017)	58,92%	Significant efforts needed to meet SDG Target 6.1 (100% by 2030)
	Population using at least basic sanitation services (% of pop., 2017)	29,10%	Significant efforts needed to meet SDG Target 6.2 (100% by 2030)
	Water scarcity (m <sup>3</sup> of renewable freshwater per capita, 2014)	450 m <sup>3</sup> /cap	Absolute water scarcity (less than 500m <sup>3</sup> per person per year)
	Water stress (water withdrawal as % of total available water, 2014)	14,31%	Low water stress (less than 25% of resource extraction)
	Marine protected areas (% of total marine area, 2020)	1,31%	Significant efforts needed to achieve CBD Target of 10% by 2020
	Fish stocks overexploited or collapsed (% of fish stocks, 2014)	44,92%	SDG Target 14.4 (0% by 2020) not met, significant efforts needed

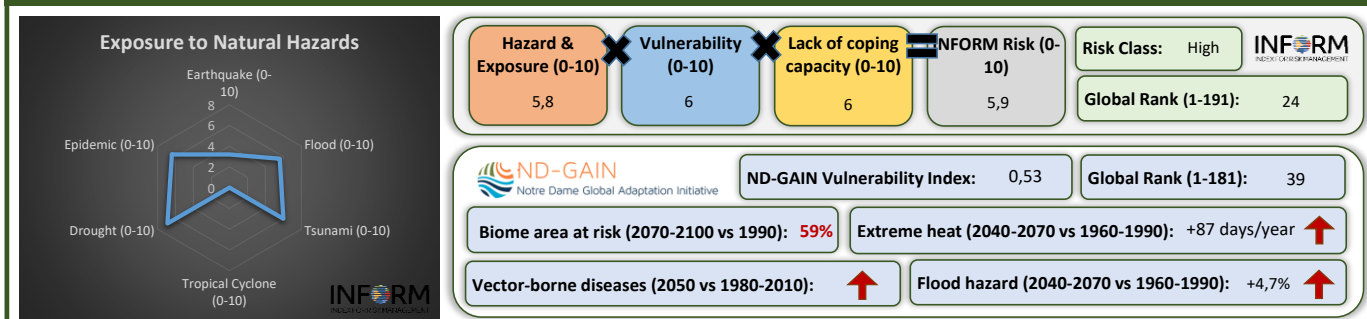
## Greenhouse Gas Emission History (Production-based)



## Historic Trends of selected indicators per Green Deal Pillar (Base 100)



## Climate Adaptation Needs



## Environmental Performance Index 2020

2020 EPI Country Rank (out of 180)

132

2020 EPI Score [0=worst, 100=best]

34,7



## SDG Index 2020

(UN SDSN & Bertelsmann Stiftung)

