



Green Deal Country Fiche

Kiribati

Population in 2019
0,12 million habitants

Projected population in 2050
0,18 million habitants

Surface
0,8 thousands km²

Population density (2019)
147 habitants per km²

GDP per capita
1.655,08 US\$ (2019)

Population living below 1,90 \$/day
NA

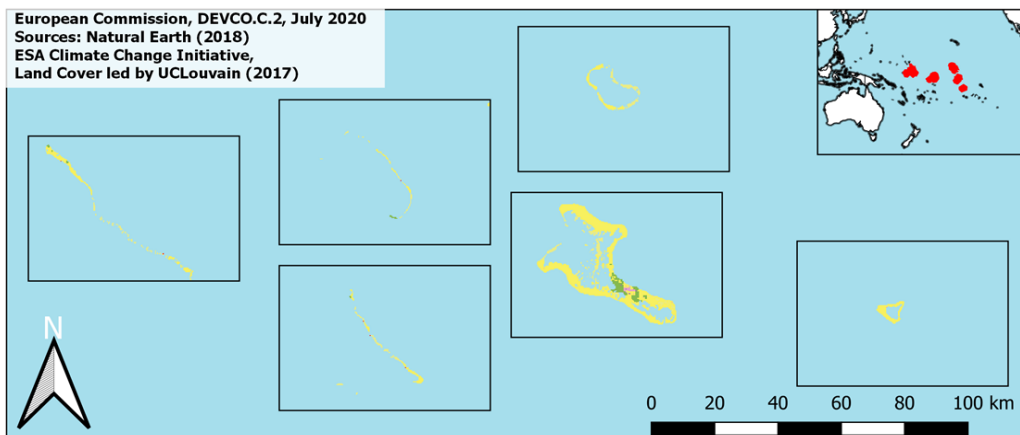
Human Development Index
0,63 (2019, UN target: >0,8)

Legend

Land Cover Classes

- Cropland rainfed
- Cropland irrigated
- Mosaic crops/nat.veg
- Tropical dense forest
- Deciduous forest
- Coniferous forest
- Mixed forest
- Shrubland
- Grassland
- Sparse vegetation
- Swamp forest
- Mangrove
- Swamps
- Urban areas
- Bare areas
- Water bodies
- Permanent snow and ice

European Commission, DEVCO.C.2, July 2020
Sources: Natural Earth (2018)
ESA Climate Change Initiative,
Land Cover led by UCLouvain (2017)



Share of global
emissions (2018)
0,000%

NDC: Mitigation Summary

(NDC from 2016)

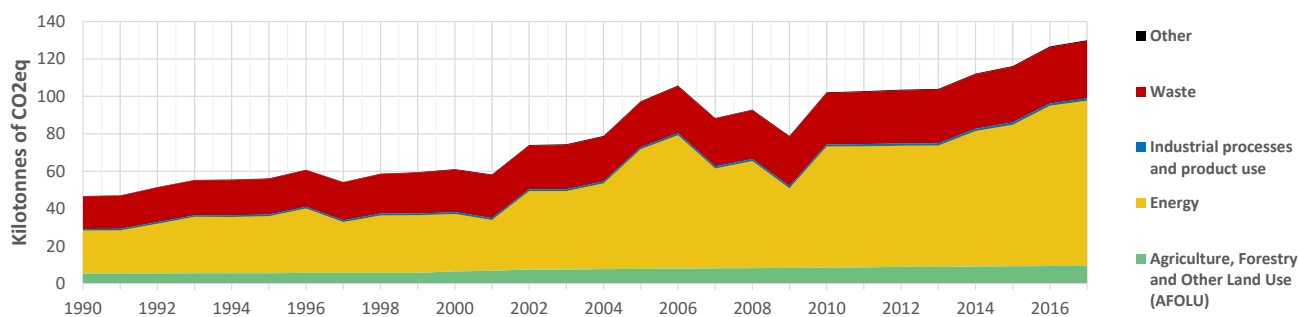
Kiribati unconditionally commits to reduce its emissions by 12.8% by 2030 compared to the BAU scenario (conditionally up to 6 1.8%), protect its mangroves and enhance coastal vegetation and seagrass beds. Actions will focus on the energy sector and oceans.

INTPA "NDC Group"

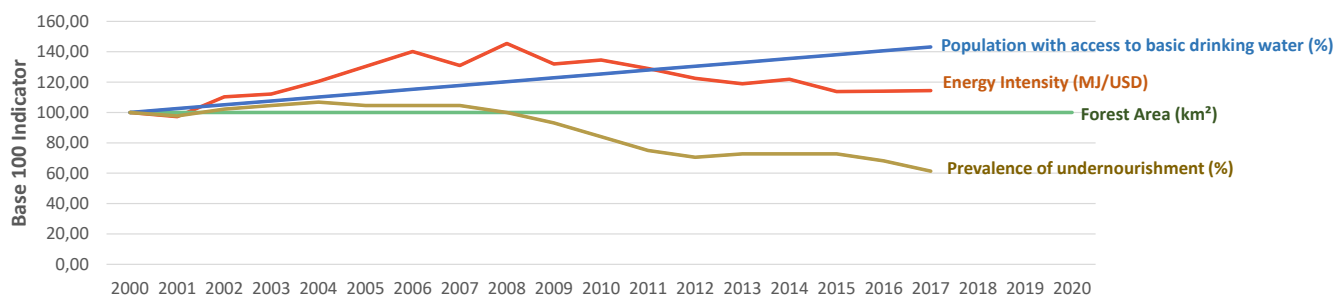
Group 3 - Suggested focus on adaptation for EU cooperation

Pillar	Indicator Name and Unit	Value	Interpretation
Green, circular and low-carbon economy	Ecological footprint (Consumption in global hectares per capita, 2017)	NA	No Data
	Recycling and composting rate (% of total solid waste, 2017)	NA	No Data
	Water productivity (USD of GDP per m ³ of water extracted, 2017)	NA	No Data
	Material footprint (Kg of raw materials used per USD of GDP, 2010)	NA	No Data
	Sustainable Consumption and Production Policy Framework (2017)	D	No policy framework for SCP has been reported to the UN
	Change in emissions (production) vs change in GDP (2007-2017)	+52% / +40%	Unsustainable growth path: emissions are growing faster than GDP
Biodiversity & Forests	Terrestrial protected areas (% of total land area, 2020)	22,28%	CBD Target has been met for terrestrial ecosystems (17% by 2020)
	Threatened species (% of total evaluated species, 2019)	6,81%	Medium share of threatened species, risk missing SDG target 15.5
	Population around protected areas (% total pop., 10km buffer, 2015)	0,60%	Small proportion of the population living around protected areas
	Forest area change (% change between 2015 and 2020)	0 %	Forest cover at equilibrium, SDG Target 15.2 achieved
	Sustainable forest management (% area with long-term plan, 2020)	NA	No Data
	Employment in forestry (number of full-time equivalents, 2015)	NA	No Data
Green and Smart Cities	Proportion of urban population living in slums (% in 2016)	NA	No Data
	Satisfaction with public transport (% satisfied, 2018)	NA	No Data
	Solid waste uncollected or dumped in the open (% of total, 2017)	NA	No Data
	Wastewater receiving primary treatment (% of total)	0,76%	Significant efforts needed to ensure at least full primary treatment
	Urban air pollution (µg/m ³ of PM 2.5 particles, 2016)	10,95 µg/m ³	Within EU 2020 target (18µg/m ³), above WHO guideline (10µg/m ³)
	Alignment of national DRR strategies to Sendai Framework (0-1, 2019)	0,90	Substantial alignment with the Sendai Framework (1)
Sustainable Energy	Access to electricity (% of population, 2018)	100,00%	SDG Target 7.1 has been achieved
	Renewable energy (% of total energy consumption, 2016)	45,43%	Higher share of renewables than the EU 2020 target of 20%
	Renewable electricity (% of electricity production, 2015)	7,27%	Very low share of renewables, low contribution to SDG Target 7.2
	Access to clean cooking (% of total population with access, 2016)	5,52%	Significant efforts needed for universal access to clean cooking
	Fossil fuel subsidies (% of GDP, 2015)	NA	No Data
	Energy Intensity (megajoules per constant 2011 PPP GDP, 2017)	6,29 MJ/\$	Energy Intensity is above all EU-27 MS values
Food systems: from Farms to Forks	Rural poverty (% of rural population below 1\$90 a day, 2018)	NA	No Data
	Food security (% of population in food crisis or worse, 2019)	NA	No Data
	Nutrition (% of children under 5 who are stunted, 2019)	NA	No Data
	Fertilizer consumption (kg per hectare, 2016)	NA	No Data
	Land degradation (national area with declining productivity 1999-2013)	0,00%	SDG Target 15.3 has been achieved
	Agriculture and FOLU share of emissions (% of CO2eq in 2017)	7,24%	Low emission shares from Agriculture, Forestry and Other Land Use
Water & Oceans	Population using at least basic drinking water (% of pop., 2017)	71,62%	Further progress needed to meet SDG Target 6.1 (100% by 2030)
	Population using at least basic sanitation services (% of pop., 2017)	47,80%	Significant efforts needed to meet SDG Target 6.2 (100% by 2030)
	Water scarcity (m ³ of renewable freshwater per capita, 2014)	NA	No Data
	Water stress (water withdrawal as % of total available water, 2014)	NA	No Data
	Marine protected areas (% of total marine area, 2020)	11,89%	Aichi Target 11 of the CBD has been met for marine ecosystems
	Fish stocks overexploited or collapsed (% of fish stocks, 2014)	3,55%	SDG Target 14.4 of 0% by 2020 not met, progress still needed

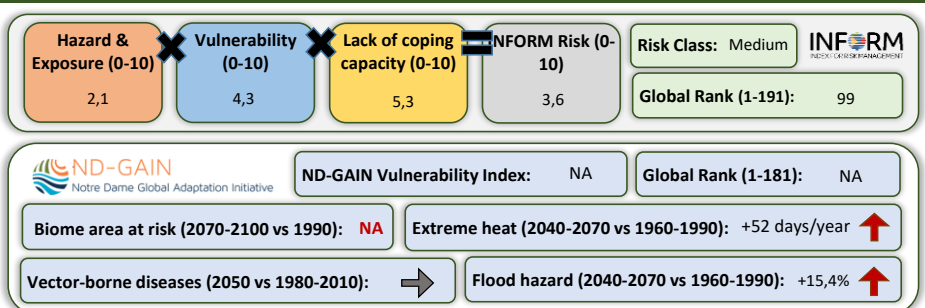
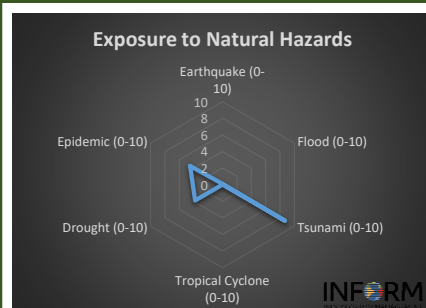
Greenhouse Gas Emission History (Production-based)



Historic Trends of selected indicators per Green Deal Pillar (Base 100)



Climate Adaptation Needs



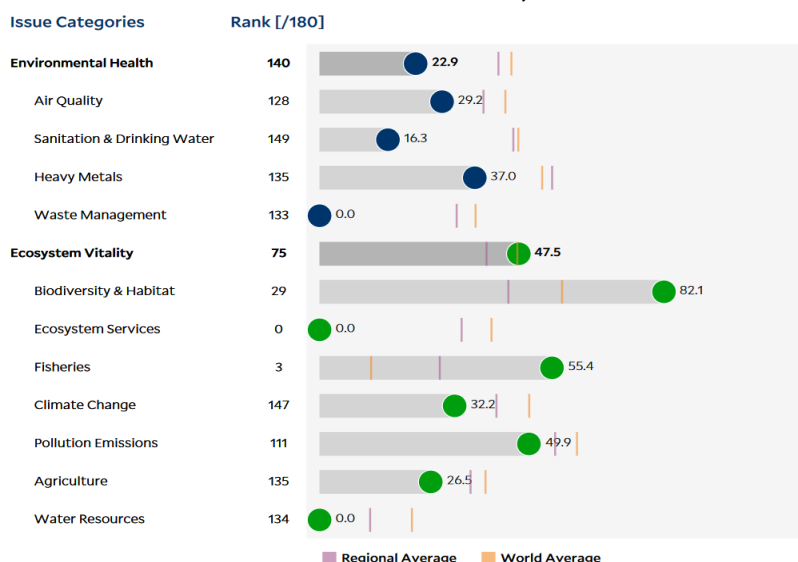
Environmental Performance Index 2020

2020 EPI Country Rank (out of 180)

118

2020 EPI Score [0=worst, 100=best]

37,7



SDG Index 2020

(UN SDSN & Bertelsmann Stiftung)



Legend:

- SDG achieved
- Challenges remain
- Significant challenges remain
- Major challenges remain
- Information unavailable