



## Green Deal Country Fiche

### South Africa

Population in 2019  
58,56 million habitants

Projected population in 2050  
75,52 million habitants

Surface  
1.219,1 thousands km<sup>2</sup>

Population density (2019)  
48 habitants per km<sup>2</sup>

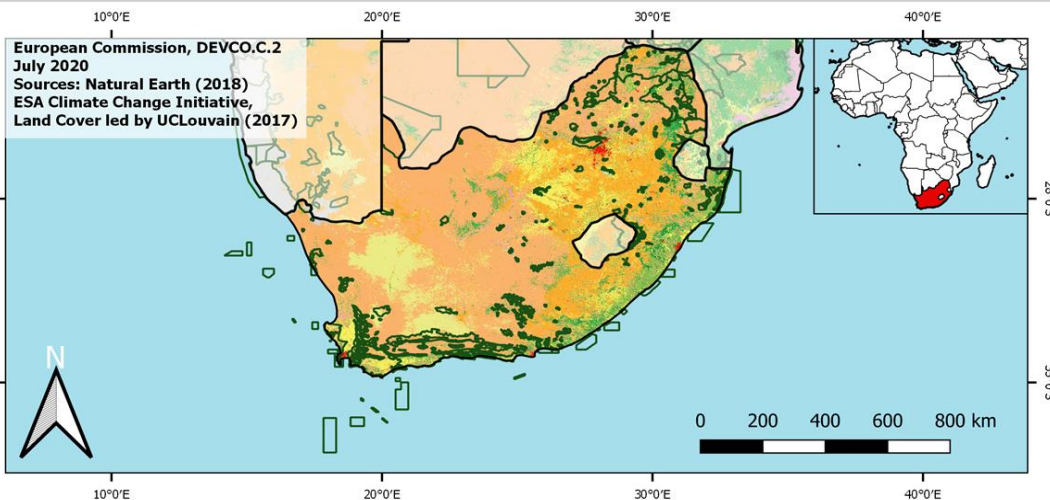
GDP per capita  
6.001,40 US\$ (2019)

Population living below 1,90 \$/day  
18,70 % in 2014

Human Development Index  
0,71 (2019, UN target: >0,8)

#### Legend

- Main Protected Areas
- Land Cover Classes**
- Cropland rainfed
- Cropland irrigated
- Mosaic crops/nat.veg
- Tropical dense forest
- Deciduous forest
- Coniferous forest
- Mixed forest
- Shrubland
- Grassland
- Sparse vegetation
- Swamp forest
- Mangrove
- Swamps
- Urban areas
- Bare areas
- Water bodies
- Permanent snow and ice



Share of global emissions (2018)  
1,278%

#### NDC: Mitigation Summary

(NDC from 2016)

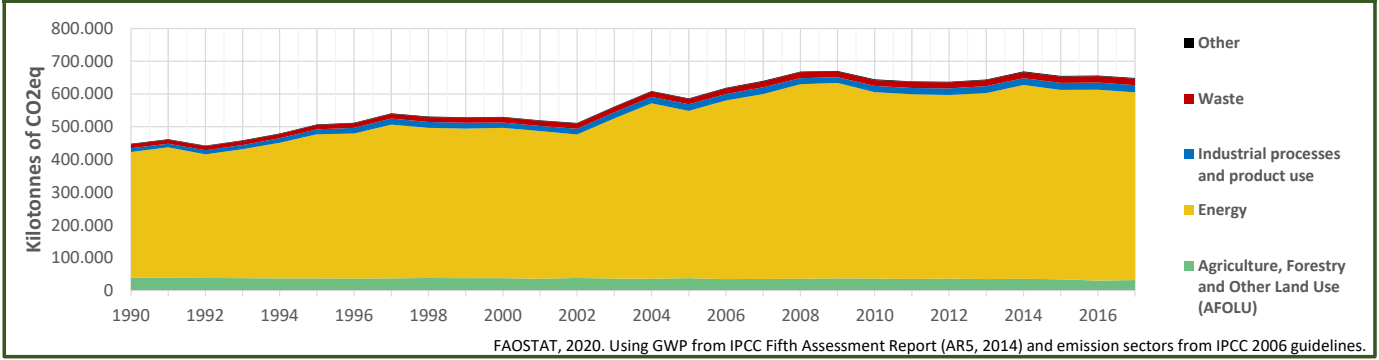
South Africa aims to keep its emissions by 2025 and 2030 in a range between 398 and 614 MtCO<sub>2</sub>eq, as defined in national policy. Actions focus on energy, industrial processes and product use, AFOLU (Agriculture, Forestry and Other Land Use) and waste.

#### INTPA "NDC Group"

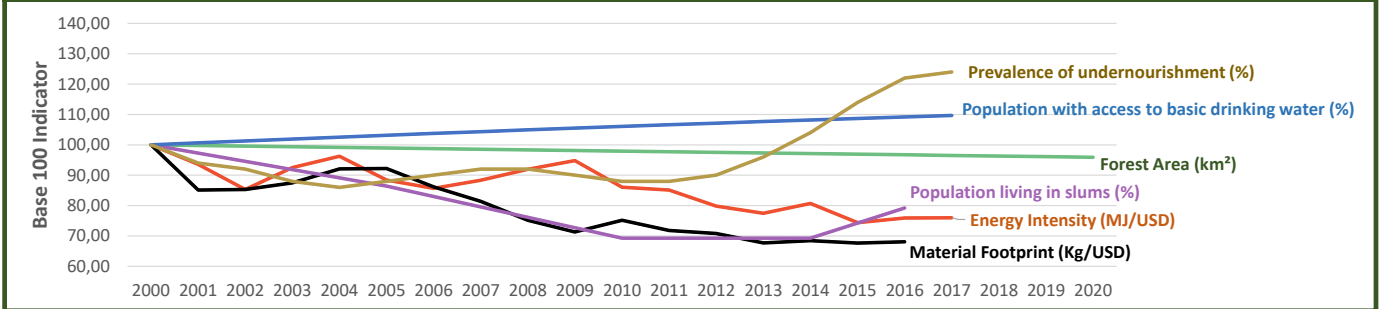
Group 1 - Suggested focus on mitigation for EU cooperation

Pillar	Indicator Name and Unit	Value	Interpretation
Green, circular and low-carbon economy	Ecological footprint (Consumption in global hectares per capita, 2017)	3,16 gh/cap	Above the global sustainable threshold of 1,6 gha per capita
	Recycling and composting rate (% of total solid waste, 2017)	25%	Low recycling and composting rate (overall EU-27 value = 45%)
	Water productivity (USD of GDP per m <sup>3</sup> of water extracted, 2017)	14,71 \$/m <sup>3</sup>	Less water efficient than EU average, but within range of EU MS
	Material footprint (Kg of raw materials used per USD of GDP, 2010)	1,13 kg/\$	Larger footprint than EU average (0,97), but within range of EU MS
	Sustainable Consumption and Production Policy Framework (2017)	D	No policy framework for SCP has been reported to the UN
Biodiversity & Forests	Change in emissions (production) vs change in GDP (2007-2017)	0% / +17%	Relative decoupling: emissions increased, but slower than GDP
	Terrestrial protected areas (% of total land area, 2020)	8,43%	Significant efforts are needed to meet CBD Target of 17% by 2020
	Threatened species (% of total evaluated species, 2019)	10,26%	High share of threatened species, risk missing SDG target 15.5
	Population around protected areas (% total pop., 10km buffer, 2015)	62,75%	Very significant share of population - Landscape approach is key
	Forest area change (% change between 2015 and 2020)	-1,06 %	SDG Target 15.2 not achieved (halt deforestation by 2020)
Green and Smart Cities	Sustainable forest management (% area with long-term plan, 2020)	NA	No Data
	Employment in forestry (number of full-time equivalents, 2015)	158000 FTE	Medium share of employment (0,5%-1% of total labor force, 2015)
	Proportion of urban population living in slums (% in 2016)	26,30%	Further efforts needed for SDG Target 11.1 (upgrade by 2030)
	Satisfaction with public transport (% satisfied, 2018)	57,11%	Medium satisfaction (UN SDSN interpretation)
	Solid waste uncollected or dumped in the open (% of total, 2017)	10%	Some efforts are still needed to meet SDG Target 11.6
Sustainable Energy	Wastewater receiving primary treatment (% of total)	38,00%	Significant efforts needed to ensure at least full primary treatment
	Urban air pollution (µg/m <sup>3</sup> of PM 2.5 particules, 2016)	24,27 µg/m <sup>3</sup>	Above EU 2020 target (18µg/m <sup>3</sup> ) but below US Standard (35µg/m <sup>3</sup> )
	Alignment of national DRR strategies to Sendai Framework (0-1, 2017)	0,53	Moderate alignment with the Sendai Framework (0,5 to < 0,75)
	Access to electricity (% of population, 2018)	91,23%	Some efforts still needed to meet SDG Target 7.1 of 100% by 2030
	Renewable energy (% of total energy consumption, 2016)	14,44%	Low share, increases needed to contribute to SDG Target 7.2
Food systems: from Farms to Forks	Renewable electricity (% of electricity production, 2015)	2,26%	Very low share of renewables, low contribution to SDG Target 7.2
	Access to clean cooking (% of total population with access, 2018)	86,60%	Further efforts still needed for universal access to clean cooking
	Fossil fuel subsidies (% of GDP, 2015)	0,71%	Medium share of FF subsidies, above all EU MS values
	Energy Intensity (megajoules per constant 2011 PPP GDP, 2017)	7,95 MJ/\$	Energy Intensity is above all EU-27 MS values
	Rural poverty (% of rural population below 1\$90 a day, 2014)	35,50%	Significant efforts needed to achieve SDG Target 1.1 (0% by 2030)
Water & Oceans	Food security (% of pop in moderate or severe insecurity, 2016-2018)	51,10%	Significant efforts needed to meet SDG Target 2.1 of 0% by 2030
	Nutrition (% of children under 5 who are stunted, 2016)	27,40%	Significant efforts needed to meet SDG Target 2.2 of 0% by 2030
	Fertilizer consumption (kg per hectare, 2016)	58,51 kg/ha	Below lowest EU MS value (60 kg/ha in Romania)
	Land degradation (national area with declining productivity 1999-2013)	13,29%	Significant efforts needed to meet SDG Target 15.3 of 0% by 2030
	Agriculture and FOLU share of emissions (% of CO <sub>2</sub> eq in 2017)	4,93%	Low emission shares from Agriculture, Forestry and Other Land Use
Water & Oceans	Population using at least basic drinking water (% of pop., 2017)	92,68%	Further progress needed to meet SDG Target 6.1 (100% by 2030)
	Population using at least basic sanitation services (% of pop., 2017)	75,70%	Further progress needed to meet SDG Target 6.2 (100% by 2030)
	Water scarcity (m <sup>3</sup> of renewable freshwater per capita, 2014)	821 m <sup>3</sup> /cap	Water scarcity (less than 1000m <sup>3</sup> per person per year)
	Water stress (water withdrawal as % of total available water, 2014)	42,92%	Medium water stress, but still within ecological requirements
	Marine protected areas (% of total marine area, 2020)	13,80%	Aichi Target 11 of the CBD has been met for marine ecosystems
Fish stocks overexploited or collapsed (% of fish stocks, 2014)	33,60%	SDG Target 14.4 (0% by 2020) not met, significant efforts needed	

## Greenhouse Gas Emission History (Production-based)



## Historic Trends of selected indicators per Green Deal Pillar (Base 100)



## Climate Adaptation Needs

