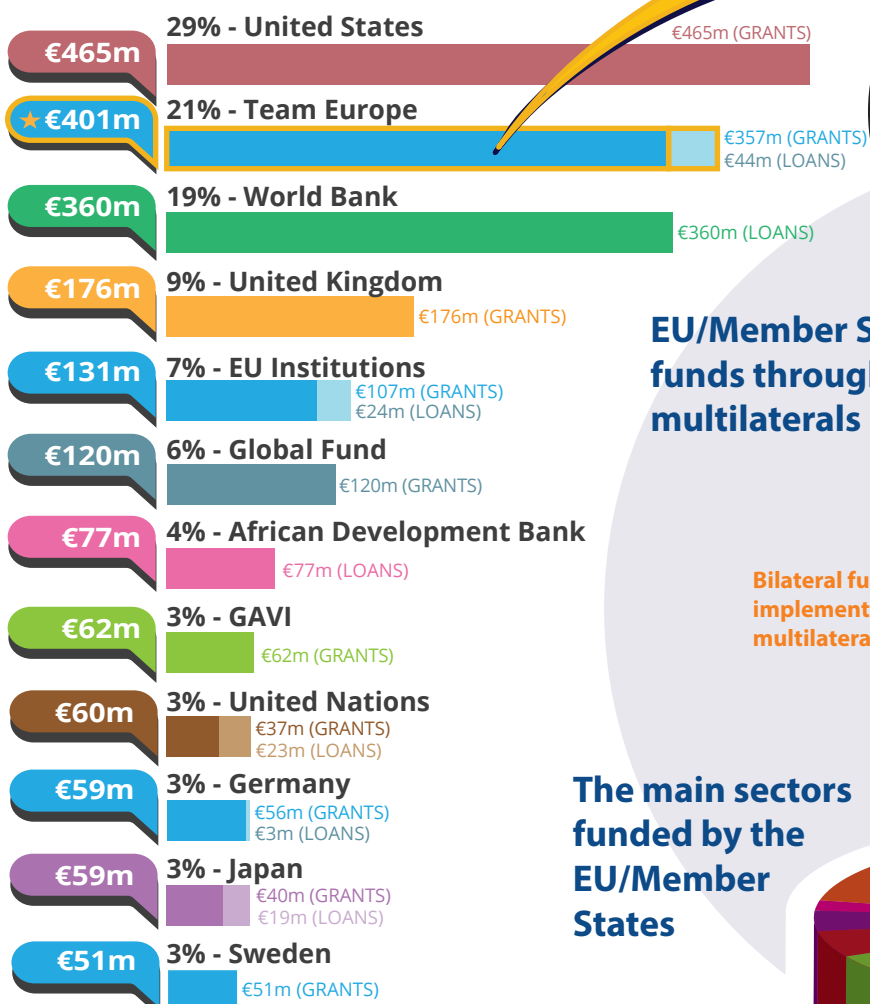




# Mapping Team Europe Financial Contributions in Uganda

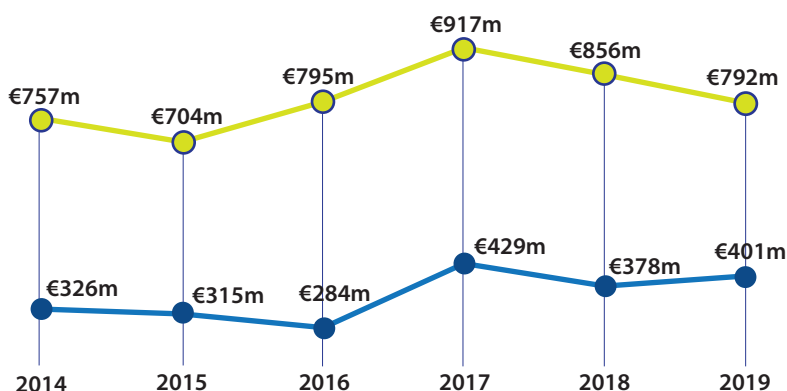
## Uganda's partners in 2019\*



### Other present EU/MS

Belgium, Netherlands, Denmark, Ireland, France, Austria, Hungary, Italy, Finland, Spain, Poland, Luxembourg, Malta, Slovak Republic, Czech Republic, Romania, Portugal, Estonia, Greece.

\*Based on ODA disbursements in the particular year.



### For more information contact:

European Commission services:

DG International Partnerships:  
Intpa-Team-Europe-support@ec.europa.eu

DG Neighbourhood and Enlargement Negotiations:  
Near-joint-programming@ec.europa.eu

European External Action Service:  
ECO-FIIC-PROGRAMMING@eeas.europa.eu

### Source:

OECD DAC CRS

Exchange rate: \$1 = €0.8933  
(OECD-DAC exchange rate for 2019)

### JOINT PROGRAMMING TRACKER:

<https://europa.eu/capacity4dev/joint-programming-tracker>

Note: EU/MS refers to the EU and its Member States together.

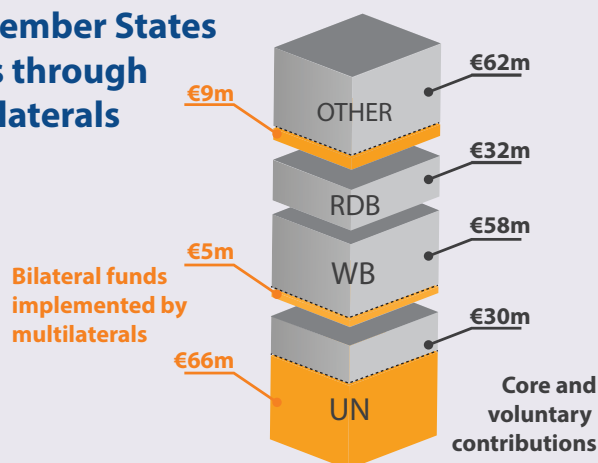
RDBs = Regional Development Banks.

€401m EU/Member States together  
21% of global bilateral flows

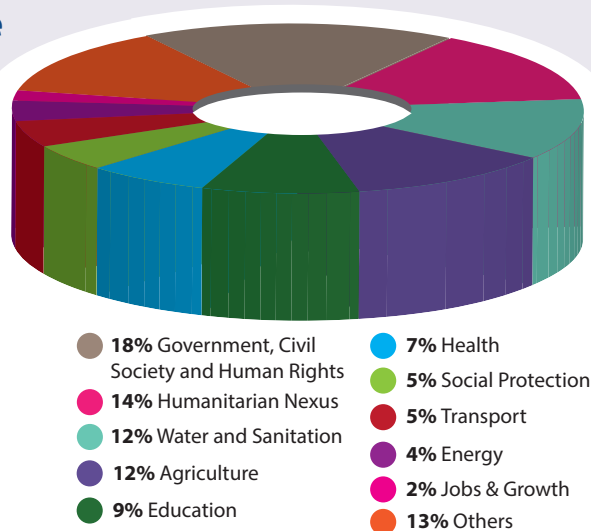
€583m  
Total EU / Member States ODA

EU/MS multilateral core and voluntary contributions  
€182m

## EU/Member States funds through multilaterals



## The main sectors funded by the EU/Member States



## Bilateral ODA trends 2014-2019 (constant prices)

■ Team Europe  
■ Non-EU Bilateral Donors

#TEAMEUROPE



# Investing in Sustainable Development in Uganda

**GDP €31.4bn** ↑\*

GDP per capita  
Fiscal position

€710 ↑  
-3.47%



Low Income Country (World Bank classification)

Least Developed Country (UN classification)



**Population 44.3m** ↑

Multidimensional poverty

0.27

**Human Development Index (UN)**

Index

0.54 ↑

Ranking (of 189 countries)

159



**Trade (in € bn)**

Imports of goods

4.1 ↑

Exports of goods

3.7 ↑

Imports of goods (EU)

0.5 ↓

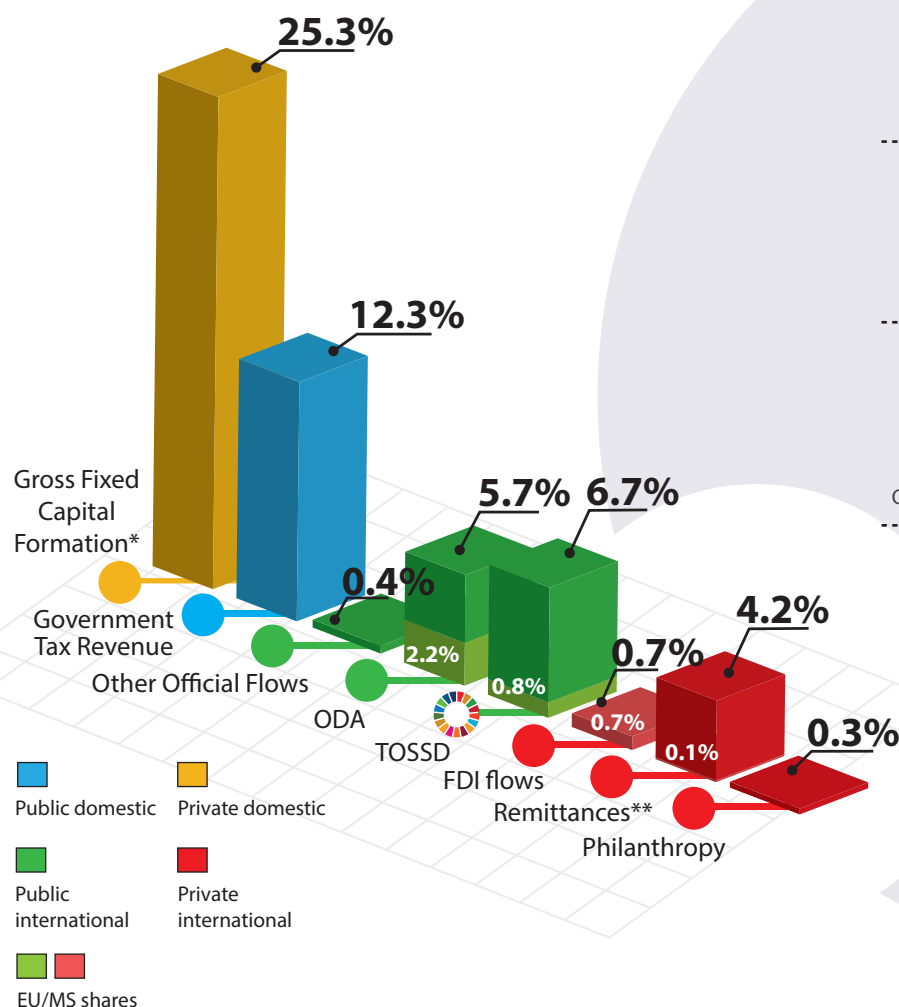
Exports of goods (EU)

0.4 ↓

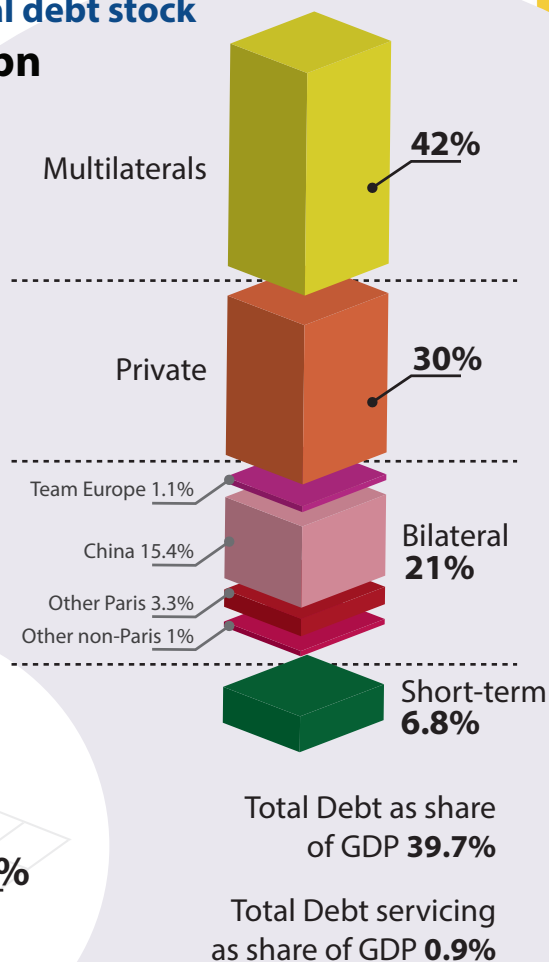


\* Compared to latest year with available data

## Financing for Development as % share of GDP



## External debt stock €12.5bn



**For more information contact:**

INTPA-SUSTAINABLE-FINANCE@ec.europa.eu

Exchange rate: \$1 = €0.8933  
(OECD-DAC exchange rate for 2019)

**Sources:**

OECD-DAC International Development Statistics (IDS) online databases:  
(a) DAC Online and (b) Creditor Reporting System, World Bank (World Development Indicators), Remittances database, International Debt Statistics, Joint External Debt Hub, Data Help Desk, Classification of Fragile and Conflict-Affected Situations, UNDP (Human Development Report 2020, Global Multidimensional Poverty Index 2020), UN CDP (List of LDCs), IMF (Direction of Trade Statistics), EUROSTAT (Balance of Payment Statistics, EU FDI data), TOSSD data visualisation tool.

Note: EU/MS refers to the EU and Member States together  
For more information on TOSSD: [www.tossd.org](http://www.tossd.org)

\*Measure of total investment in the domestic economy (overlap with FDI)

\*\*Data on remittances from the EU is taken from KNOMAD-World Bank staff estimates, Bilateral Remittance Matrix 2020

Paris refers to debts to the Paris Club of creditors (22 countries)

**#TEAMEUROPE**