



# Knowledge sharing through the Center of Excellence in Finance (CEF)

Jana Repanšek, CEF Deputy Director  
[jana.repansek@cef-see.org](mailto:jana.repansek@cef-see.org)

## **PRESENTATION STRUCTURE:**

- 1) About the CEF
- 2) Possible cooperation with the New European Donors



# About the CEF

## CENTER OF EXCELLENCE IN FINANCE (CEF):

- ✓ **Regional institute** for capacity development in **public financial management** and **central banking** in **Southeastern Europe** and **Turkey**.
- ✓ **Key regional provider** of training and technical assistance in PFM **through a combination** of training, peer learning, and—in cooperation with the IMF—technical assistance.
- ✓ **Established by the Slovenian Government** as a non-profit foundation in 2001. Ambition is to **convert into a fully fledged international organization** by 2014.
- ✓ **Initiated by member countries** within the framework of Stability Pact for Southeast Europe.

Located in Ljubljana, Slovenia's capital.



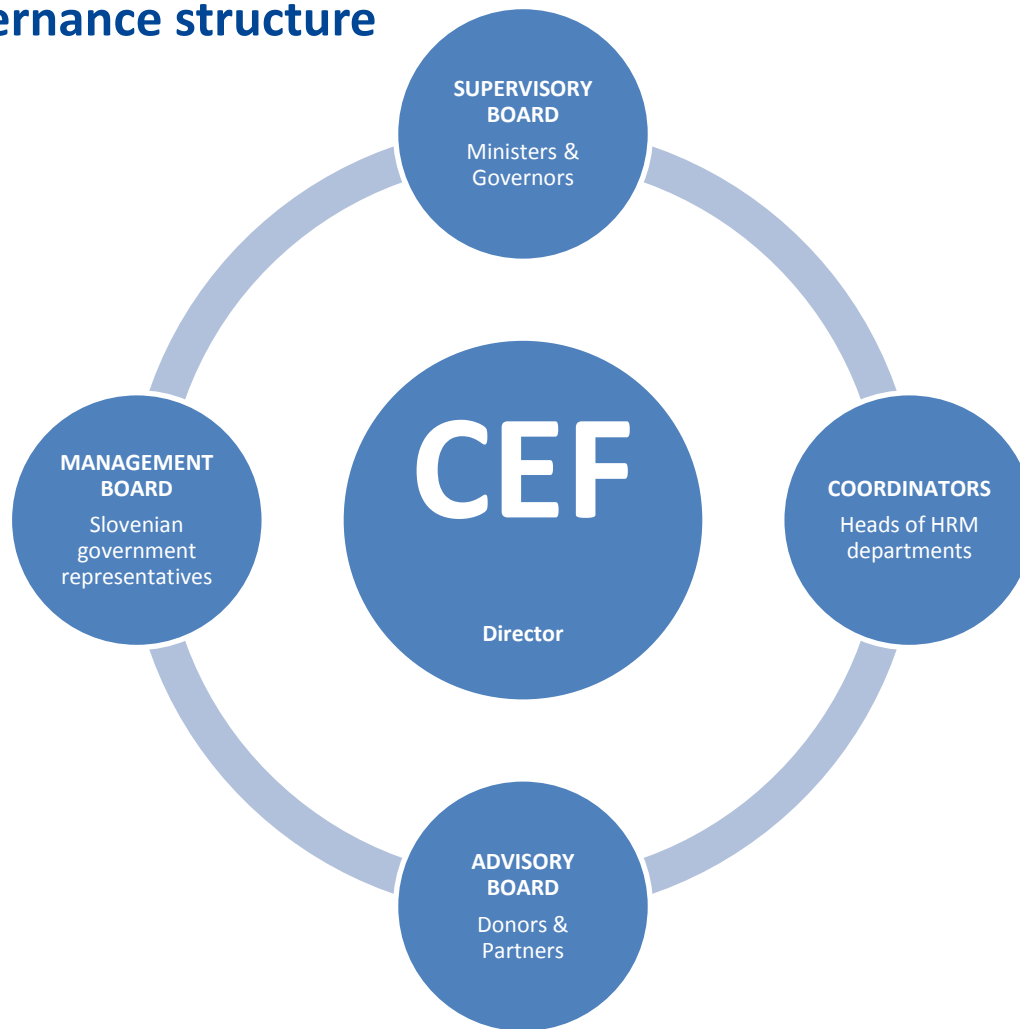
## CEF's geographical scope

12 member countries

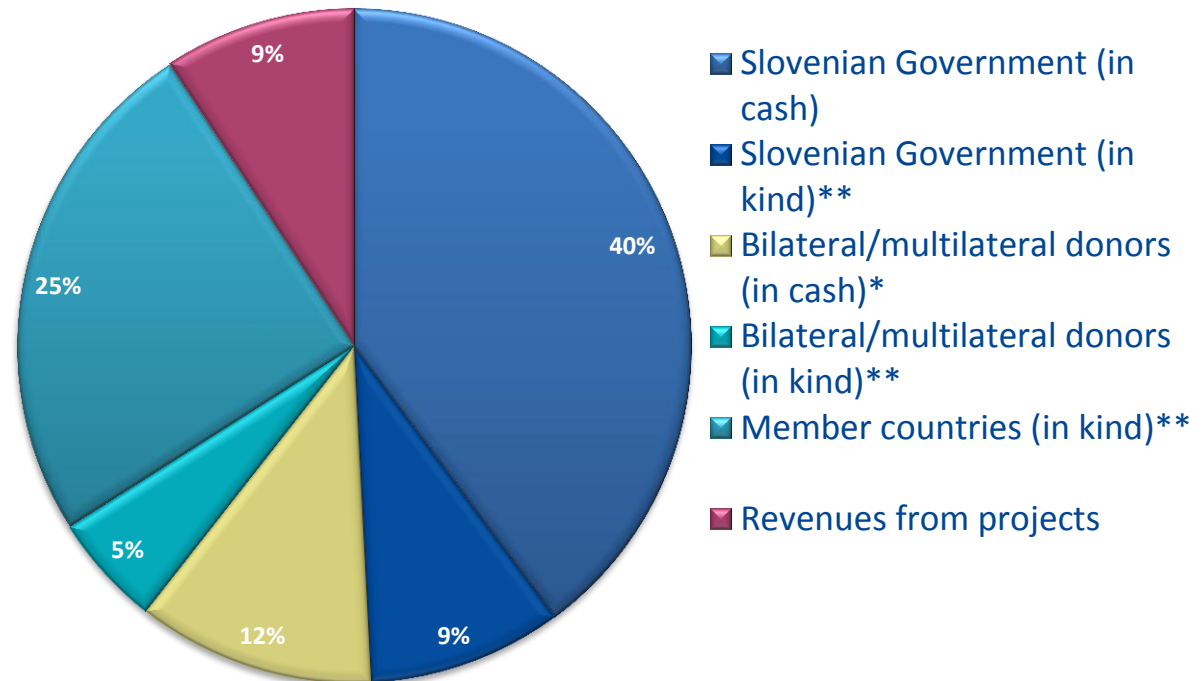
*Active throughout Southeast Europe, East Europe and Central Asia*



## Current CEF governance structure



**CEF is a non-profit institution = cost sharing among members and partners.**



***Resources for operations in 2011***

\* without direct cost of PEM PAL events

\*\* estimate





# Possible cooperation with the New European Donors

## POSSIBLE COOPERATION WITH THE NEW EUROPEAN DONORS:

- ✓ Participation in training events as **experts/lecturers** to transfer knowledge (in-kind contribution to the CEF program).
- ✓ In addition, New European Donors could financially support:
  - Beneficiaries' attendance at the CEF training events.
  - Development and delivery of regional projects implemented by the CEF.
- ✓ Attendance of training events as **participants** to learn and share experience.

## JOINING EFFORTS

### IS A WIN-WIN SITUATION WHERE ALL STAKEHOLDERS CAN BENEFIT:

- ✓ **CEF has a network and infrastructure** in place to support region-wide capacity development initiatives.
- ✓ We **promote** our partners' and members' **good practice** and assure their **visibility**.

**FOR MORE INFORMATION ABOUT THE CEF, OUR PROGRAM  
AND HOW WE CAN COOPERATE:**

Visit CEF's website @ [www.cef-see.org](http://www.cef-see.org)

Read CEF's Annual Report 2011 @ [www.cef-see.org/AR](http://www.cef-see.org/AR)

Contact Jana Repanšek, CEF Deputy Director  
[jana.repansek@cef-see.org](mailto:jana.repansek@cef-see.org)