

HeatWave

My city strikes back

Welcome!



Who are we?



EMPOWERING THE CLIMATE GENERATION



Elisa Bodin



Cristhian Molina



Luc Châles

HeatWave, what is it?

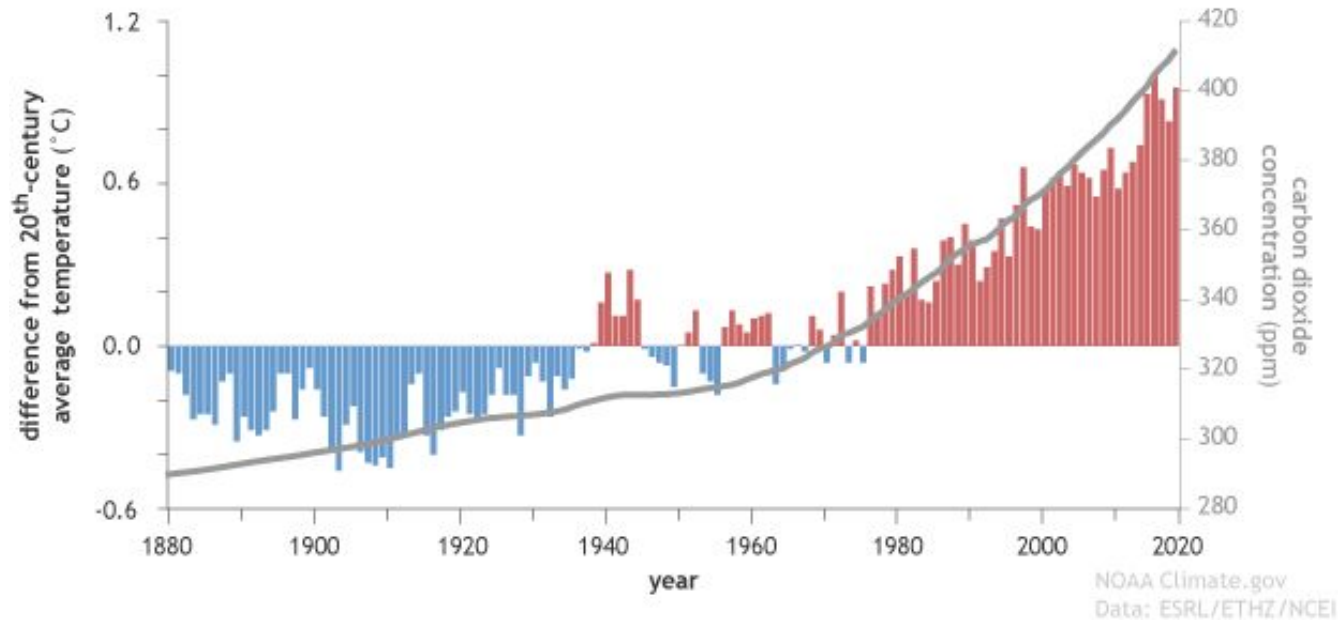
HeatWave is a workshop designed in partnership with **UNICEF France** in which each participant plays the role of a civil society actor confronted with the imminent arrival of an extreme heat wave in their city.



Goal: Find innovative short, medium and long term solutions to reduce the impact of the heat wave and lead your city on the path to resilience!

More greenhouse gas emissions

Atmospheric carbon dioxide and Earth's surface temperature (1880-2019)



TODAY : **+1,2°C** in comparison to the pre-industrial era (\approx 1850)

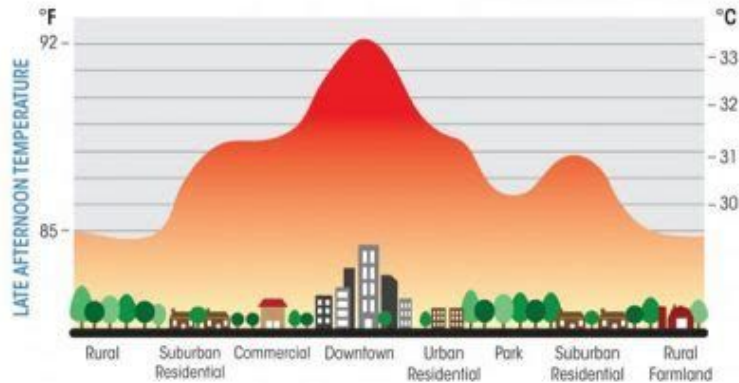


Heat waves



WHAT IS A HEAT WAVE?

- Abnormal high temperatures (+32°C)
- For several consecutive days

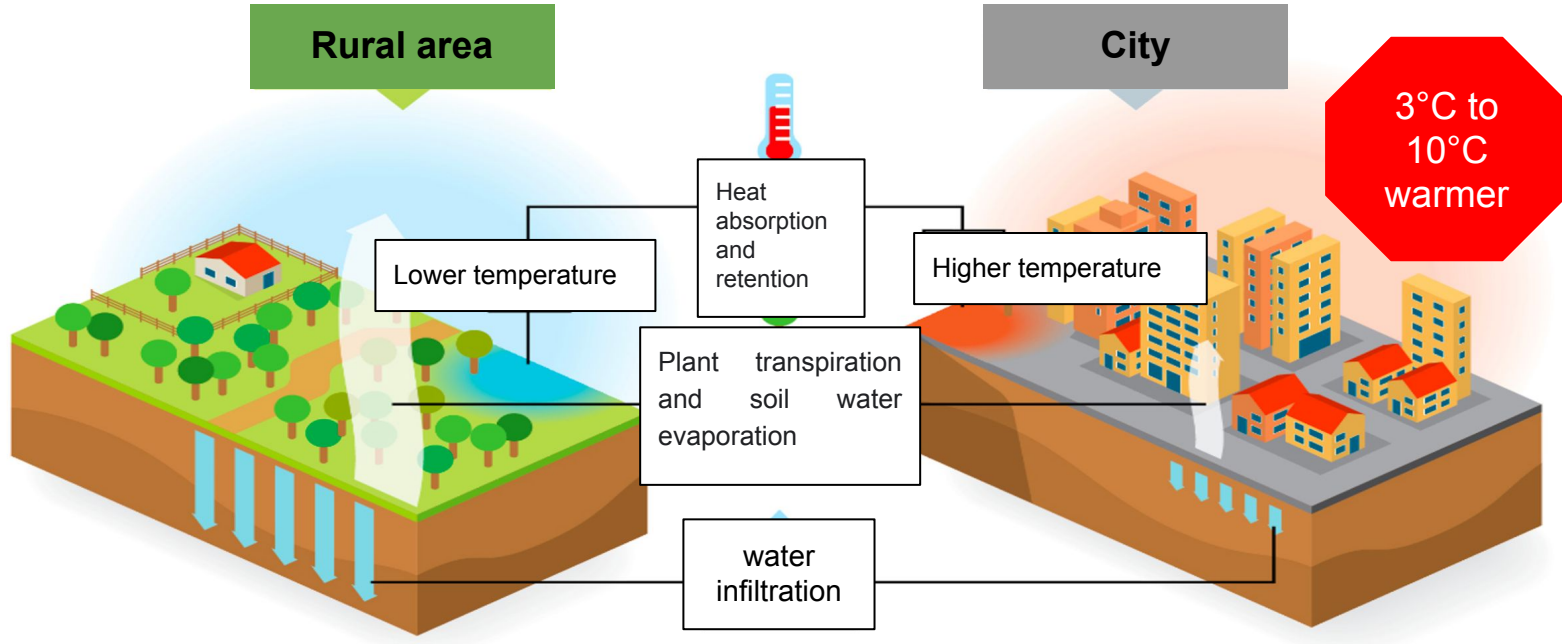


WHAT ARE THE CONSEQUENCES ON OUR HEALTH?

- Dehydration
- Heatstroke (especially for vulnerable people)
- Stress on the cardiovascular system
- Cancer (long term)
- Eye disorders (sun)

so what happens in cities?

Urban heat island: in cities we are suffocating



Get ready for it!



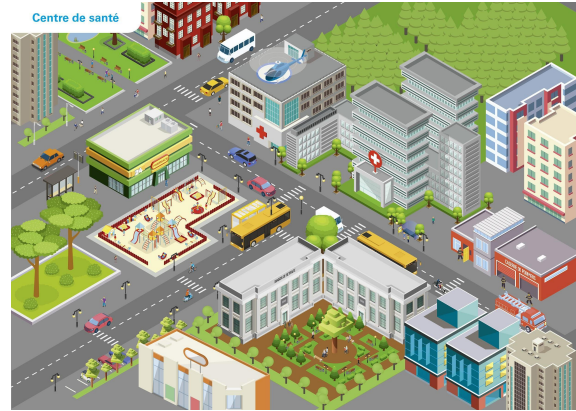
HeatWave: My city strikes back

Opening speech

Mr. Prefect



City areas



Roles

We all have a role to play in our city



4

neighborhoods →

City center
Economic center

Health district
Peri-urban area

neighborhood elected

specialties for citizens →

Economy
Social

Environment
Communication

24

professions

9

economic groups
social groups
environmental groups

6

communication groups

NEIGHBORHOOD ELECTED IN CHARGE OF THE ECONOMIC CENTER

First name / Last name: Age:

My accommodation (house or apartment, occupants, size, floor ...):
.....
.....

My neighborhood (density of housing, services, green spaces):
.....
.....

My relatives (children, the elderly or those with a health problem):
.....
.....

OBJECTIVES

Avoiding the rush in transport

What to avoid:

- Saturation of public transport at peak times
- Sharp increase in road traffic (traffic jams) and therefore pollution

LEVERAGING ACTIONS:

- Reducing the number of trips
- Avoiding overloading of infrastructures during rush hour
- Encouraging active modes of transport (walking, cycling, etc.)

Ensuring the safety of all workers:

What to avoid:

- Working hours unsuitable for high temperatures
- Fainting, dehydration, intense heat due to working conditions
- Massive recourse to the right of withdrawal for employees working in the most exposed sectors (construction, agriculture, etc.)
- Consequences on health, in particular for foreign workers

LEVERAGING ACTIONS:

- Adaptation of working hours and conditions
- Protection of sensitive and / or exposed workers
- Sensitization and empowerment of all public and private stakeholders
- Financial efforts

4 neighborhood elected officials

- The **referents** of their neighborhood
- **Facilitate discussions** with residents to identify the best measures to implement
- **Write down their ideas** to summarize them at the end of the discussions
- So they have an **active and essential role!**

ENVIRONMENT GROUP

First name / Last name: Age:

My accommodation (house or apartment, occupants, size, floor ...):
.....

My neighborhood (density of housing, services, green spaces):
.....

My relatives (children, the elderly or those with a health problem):
.....

Your profession (choose it from the following proposals):

- Representative of the National Forestry Office** The ONF aims to protect and manage sustainable forests, to welcome the public in the forest and prevent natural risks (fires, diseases, etc)
- Member of the Association for the Protection of Wild Animals (ASPAS):** ASPAS works for the protection of wild fauna and for the defense of the rights of nature users by leading campaigns to mobilize elected officials, raise public awareness, etc.
- Spokesperson for National Nature Environment:** Federation of 50 member organizations, National Nature Environment fights for the preservation of biodiversity and against the overexploitation of resources. It promotes a new development model in order to protect human beings and all living beings while promoting democratic life.

YOUR ROLE

You must find short, medium and long-term solutions to preserve local ecosystems and the essential resources on which the inhabitants depend (drinking water, food, electricity). Thanks to your in-depth knowledge of the city and your profession, it is up to you to find the solutions that will allow the city to rise to this ordeal. To prevent irreversible damage (decline in biodiversity, shortages, etc.), strong measures must be taken as soon as possible:

- Protect plant and animal species as best as possible: humans are not the only inhabitants of the city!
- Support farmers through concrete measures
- Do everything to avoid cuts in electricity or water (potable or non-potable)

The citizens

- Each of them have a **specialization** coming from their job: economy, social, environment and communication
- In each neighborhood they go to, they must **offer measures** to protect it from the consequences of the heat wave

Instructions



Unfolding

First session (45 min)

- 1 The citizens go and see the neighborhood that they selected.
- 2 The citizens present themselves
- 3 The neighborhood elected official summarizes the challenges of the neighborhood.
- 4 The citizens offer solutions. The representatives lead the discussion and take notes to report them to the prefect.

Unfolding

First session (20 min)

- 1 By turns, neighborhood elected officials present the main ways to address the challenges of their neighborhood. It will be your first “**heatwave plan**”.
- 2 Debriefing of the presented measures with the prefect.

Unfolding

Second session (15 min)

- The neighborhood elected official continues to take notes.
- The citizens can go to the neighborhood of their choice and are free to change neighborhoods whenever they want.

Unfolding

Final session (15 min)

- By turns, neighborhood elected officials present the **5 most emblematic/ambitious/creative measures**.
- All the participants select 5 short-term measures and 5 long-term measures to write on the summary sheet.

Conclusion (10 min)

Let's play! HW: My city strikes back

1

Citizens on the charge !

- Create your character, a name a story a profession ! **Be creative !**

Long live democracy !

- Super fast popular elections! **Who will represent us?**

2

TOUCH TO START →



Alert! Your city needs you!

Speech by Mr. Prefect



3 min of preparation

Discuss within your own group/neighborhood
before moving on to the next step



First session of brainstorming

45 min
15 min x Neighborhood



First overview

20 min



Second session of brainstorming

15 min



Final summary

15 min



Conclusion

10 min



We have an agreement!

HW Plan!



Debriefing

What did this workshop inspire you?

Did you feel comfortable with your role and what we asked of you?

Thank you everyone!

contact@climates.fr

