



# INTPA-NEAR Environment & Climate Week

27-31 March 2023  
Brussels, Belgium



# NEAR regional session

---

# Agenda

---

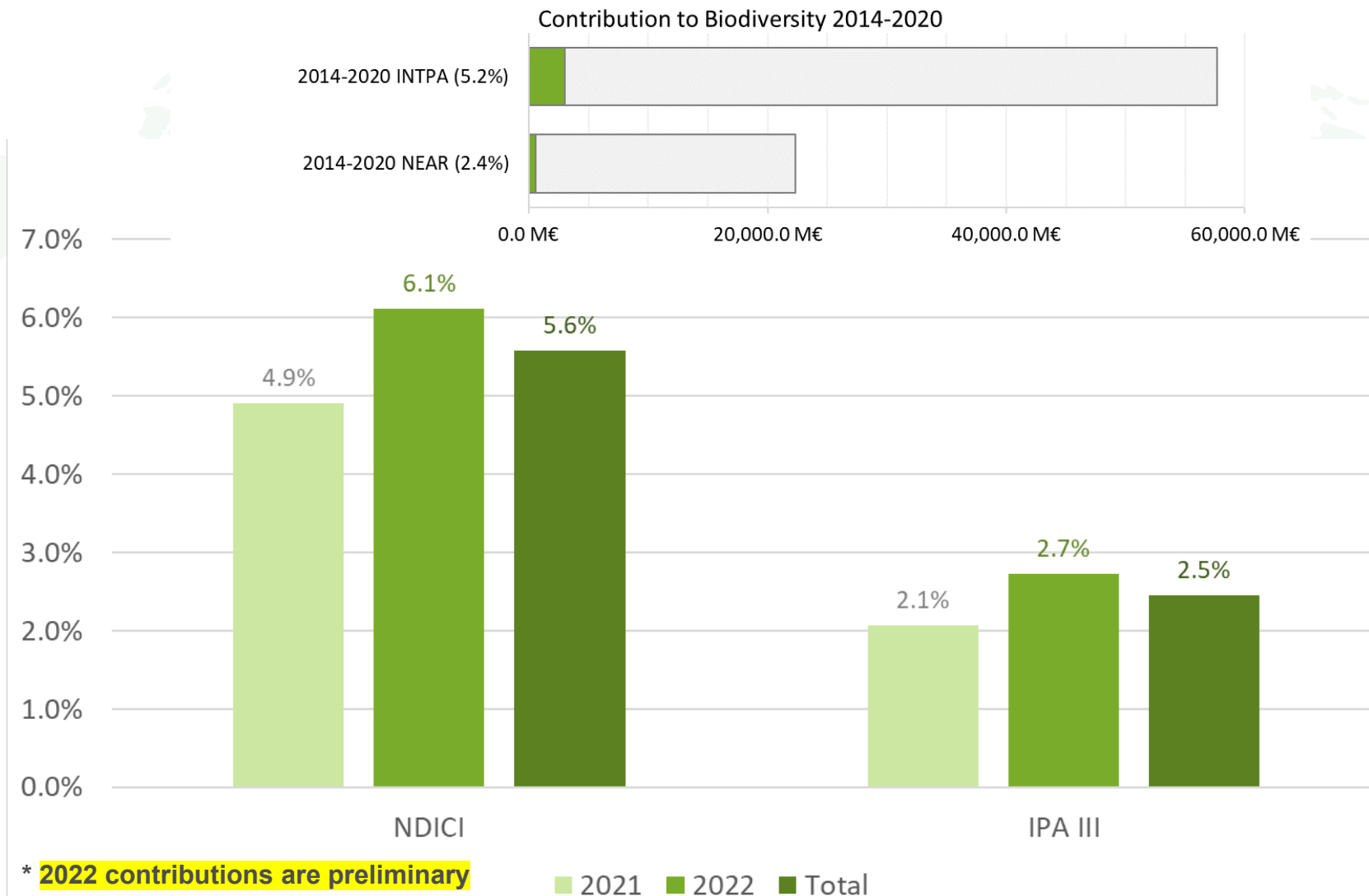
14:00-15:30	PART I – informal exchange with Mathieu Bousquet - head of NEAR A3 unit and Acting Director A	Plenary
20 minutes each	<ol style="list-style-type: none"> <li>1. Global Gateway</li> <li>2. EFSD +</li> <li>3. Paradigm shift</li> <li>4. Facilities</li> </ol>	
15:30-16:00	Coffee break	
16:00-17:30	PART II – Poster session - (not webstreamed)	Plenary and break-out
16:00-16:10	Pitch on each poster	Plenary
16:10-17:20	<p>7 projects from EUD or HQ to be showcased,</p> <p>Each participant can walk around and attend each poster session (7 x 10 minutes)</p>	Small break-out sessions in the same room, around each poster
17:20 -17:30	Conclusions	Plenary

# Where are now in terms of green targets in NEAR?

---



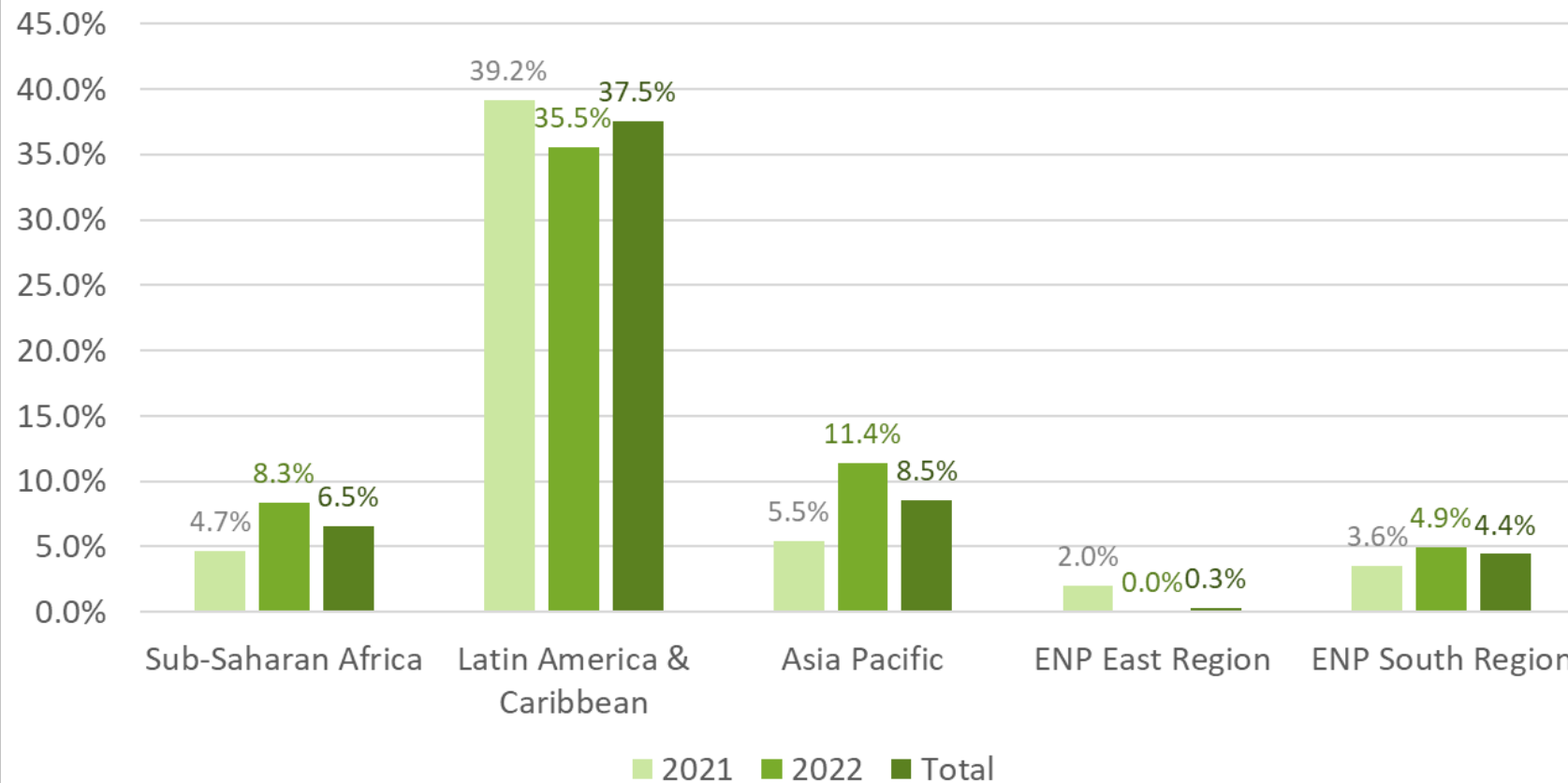
# Where are we now? Biodiversity contributions 2021-2022



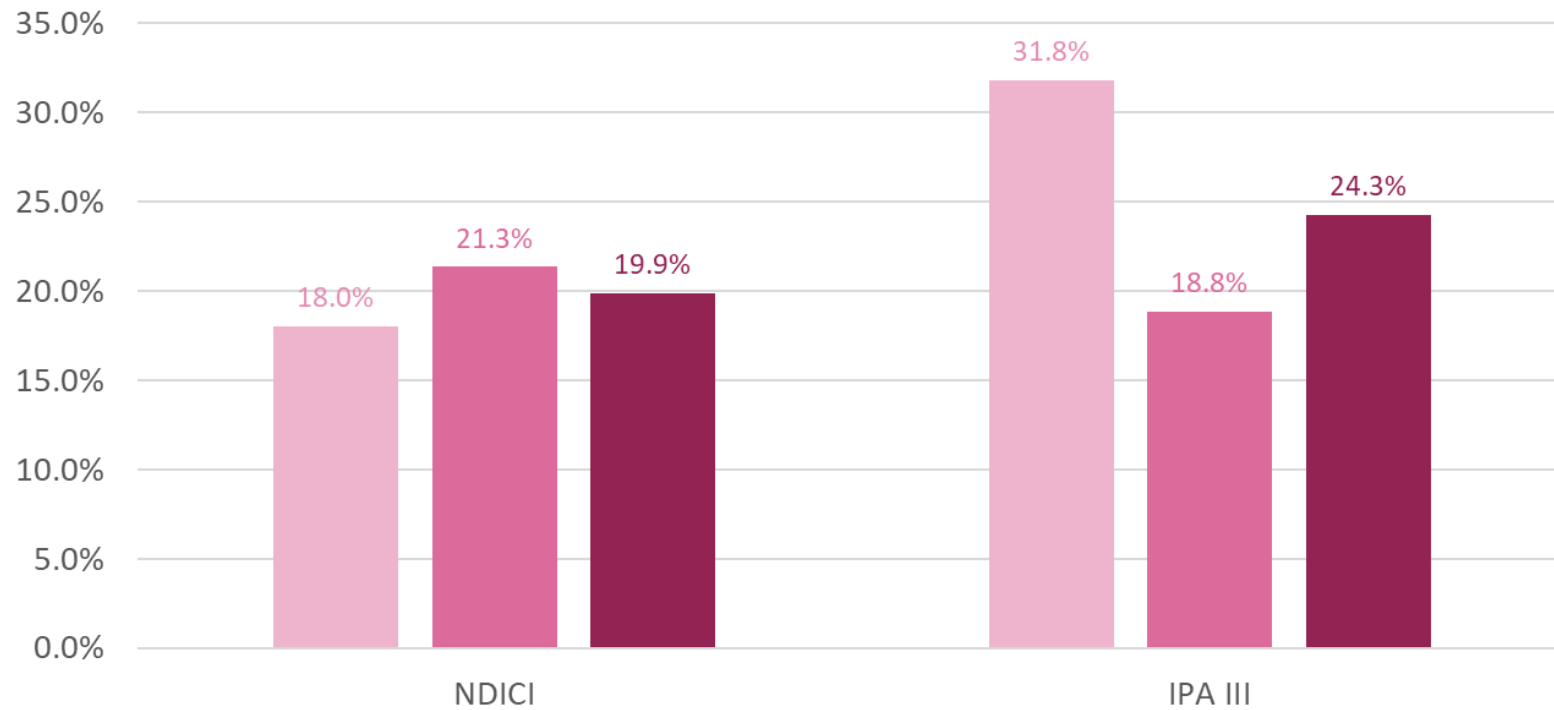
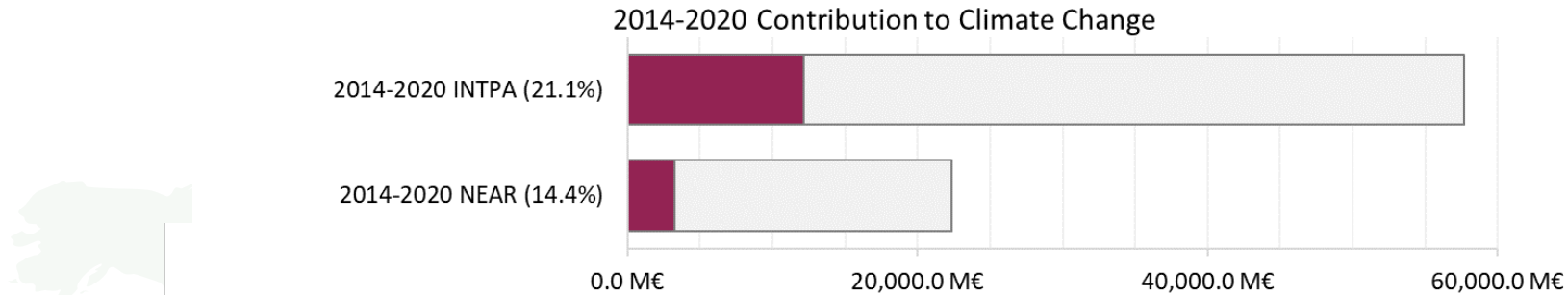
# Where are we now? Biodiversity contributions 2021-2022



NDICI Contribution to Biodiversity by Region

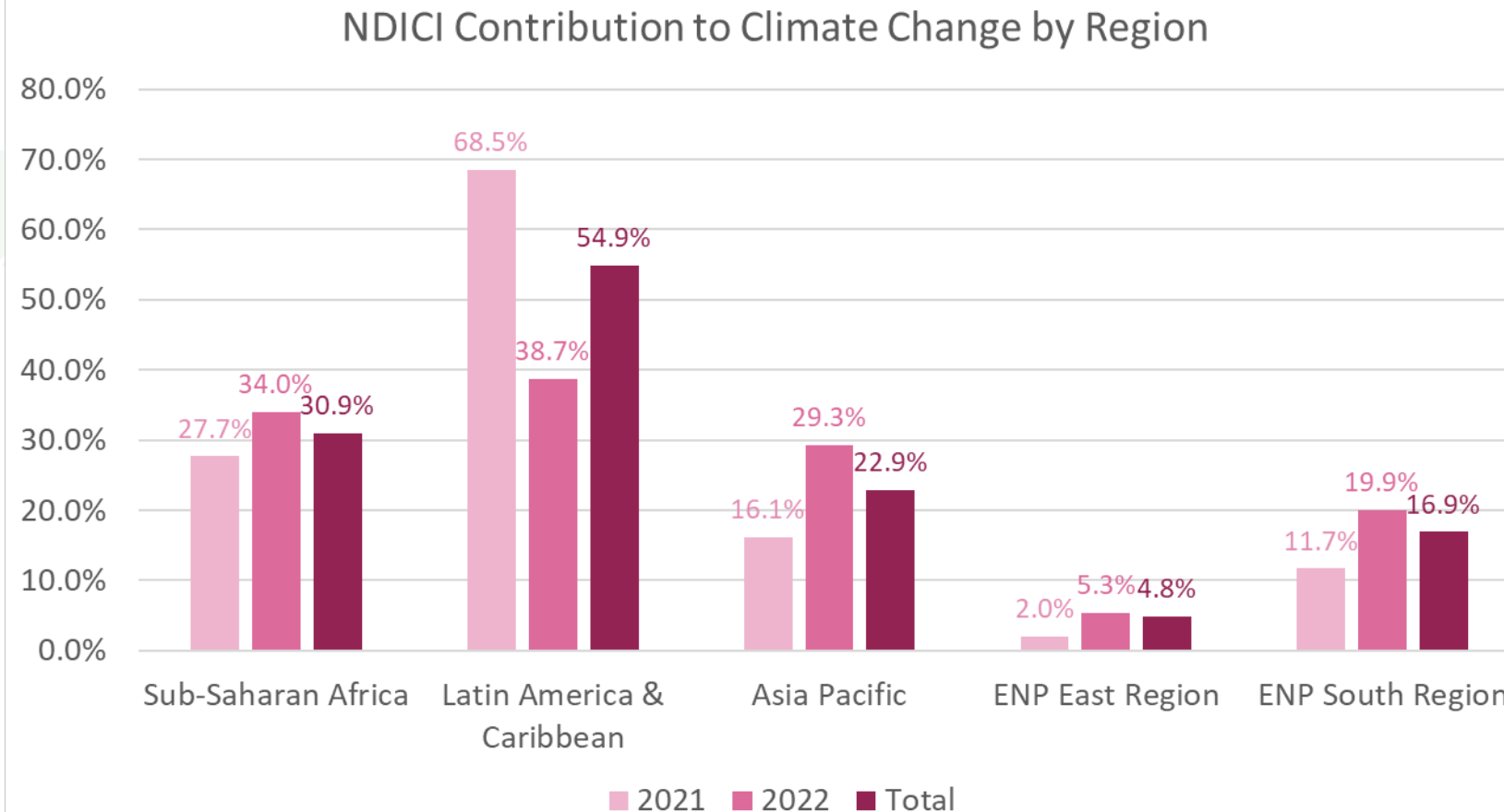


# Where are we now? Climate contributions 2021-2022





# Where are we now? Climate contributions 2021-2022



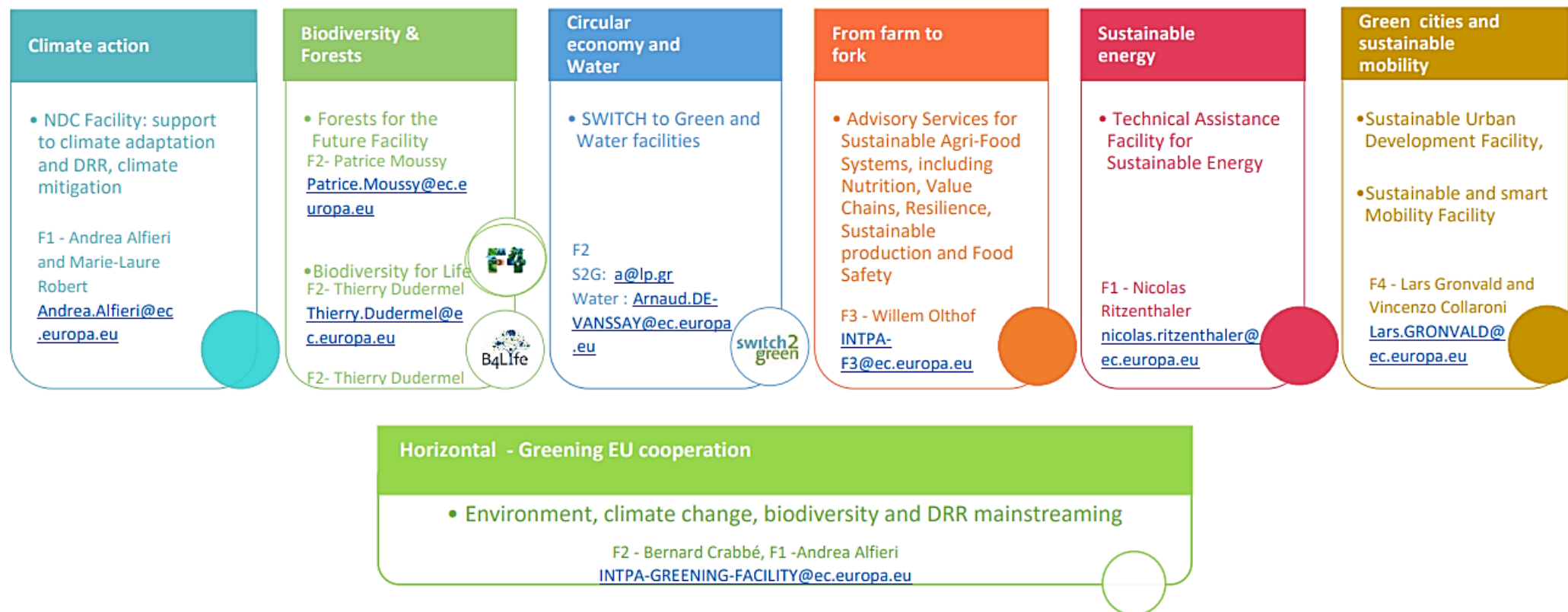
\* 2022 contributions are preliminary

# What is Green Deal Knowledge Hub?

---

## EUROPEAN GREEN DEAL - EXTERNAL DIMENSION

### Technical assistance in support of programming and implementation



#### NEAR A3 contact points:

NDC:  
Aikaterini Tsakmakidou

Biodiversity and Mainstreaming:  
Guillemette Vachey

Circular Economy:  
Sandrine Beauchamp

Energy:  
Constanca Martins Leite de Almeida

# Back-up slides

---



# Q&As

---

## Global gateway

- What are the main challenges you encounter when trying to streamline climate and biodiversity in relation to the Global Gateway investment priorities?
- Could you share your experience in terms of investment opportunities for green related interventions?



# Q&As

---

## EFSD +

- How to improve HQ-EUD cooperation with regards to environmental investments under EFSD+, with particular focus on how to ensure the “policy first” approach?
- How to integrate private sector into the more “traditional” cooperation?





# Q&As

---

## Paradigm shift

- What kind of support do you think is lacking from HQ to design / implement your green action effectively?
- What would be the best timing for it (e.g. discussions in November n – 1 of a project)?



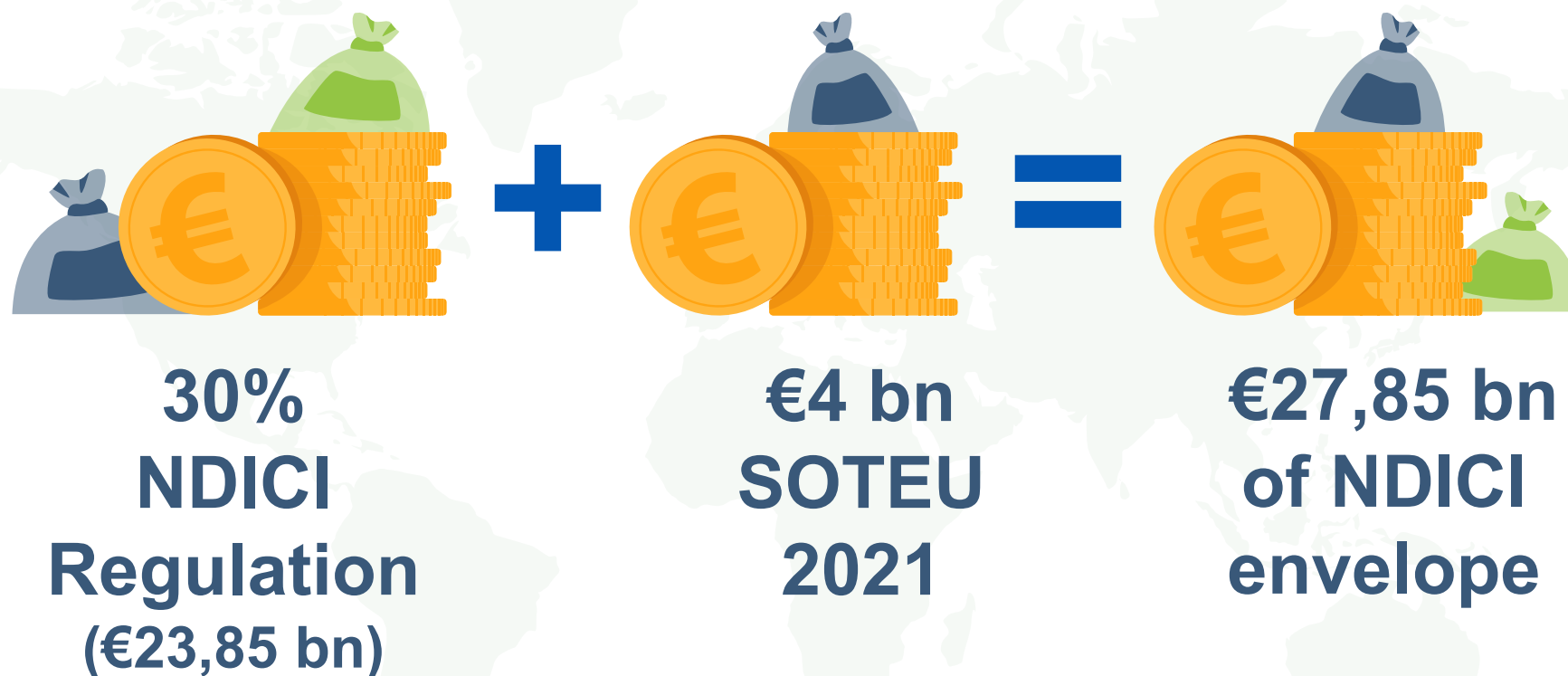
# Q&As

---

## Facilities

- How to make best use of facilities in EUD?
- Some positive/less positive (but constructive) experience to share?

# Climate target (NDICI – GE)



Total NDICI budget: € 79,5 bn

# Climate target – IPA3

---



**18% increasing  
to 20% by 2027**  
**IPA3 Regulation**  
**(€2,55 – €2.83 bn)**

# Biodiversity target (NDICI and IPAIII ambition)



**7.5% (in 2024)**  
**10% (in 2026 and 2027)**  
(MFF)

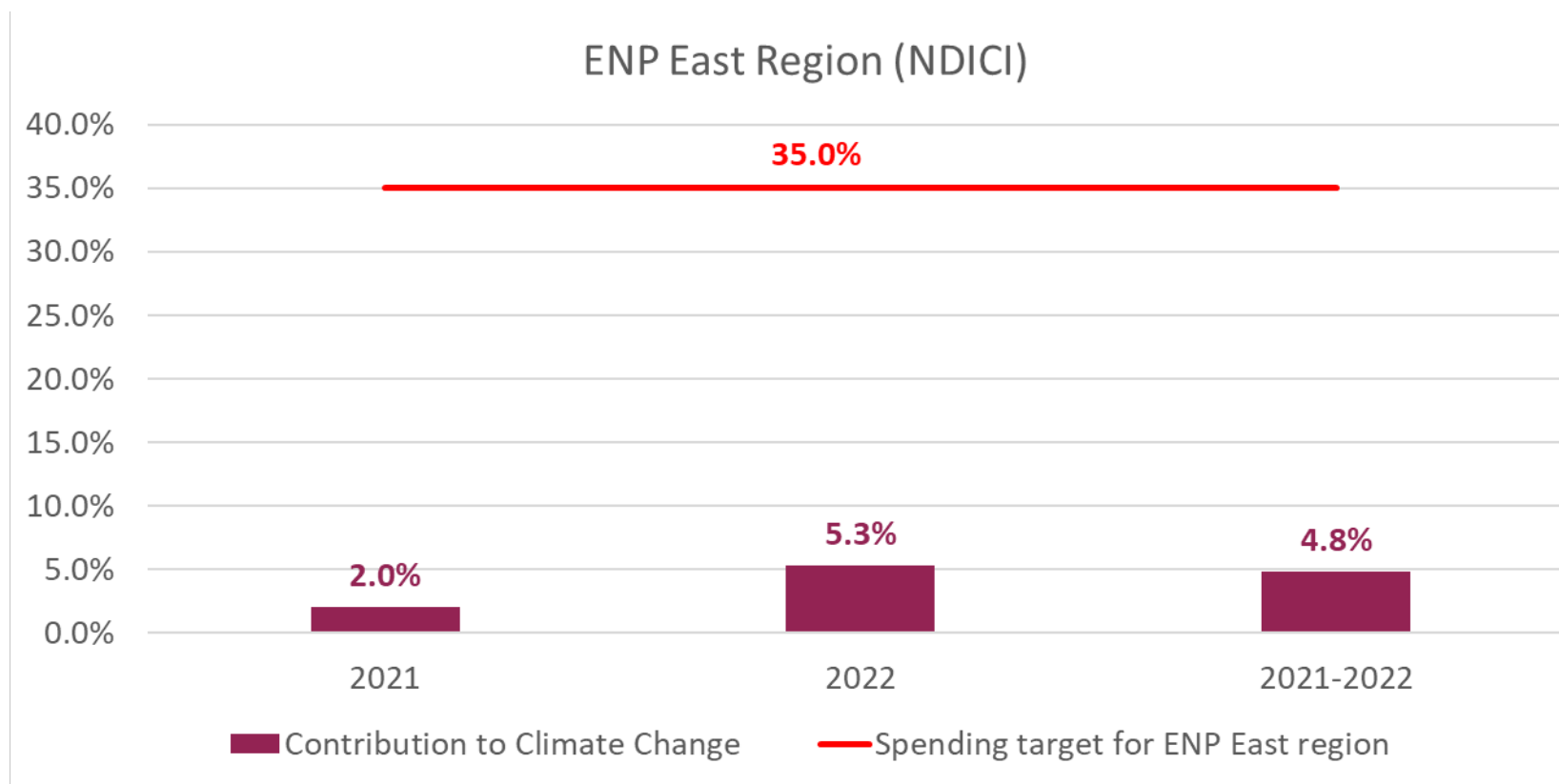


**Doubling Biodiversity Funding**  
**(vs 2014 – 2020 baseline)**  
**(State Of The Union pledge)**

**€ 7 billion over 2021-27**

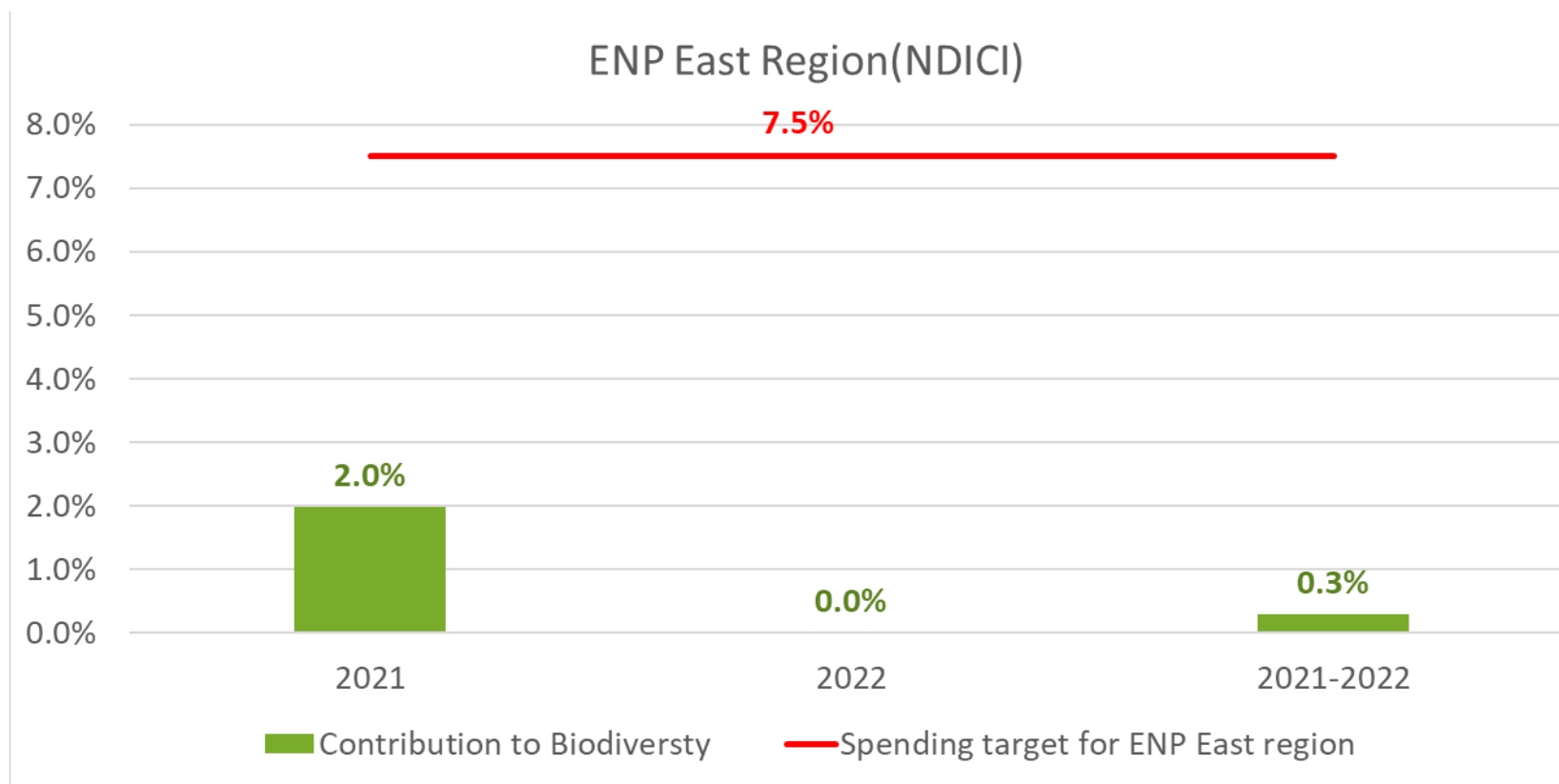
\* Some 11% for INTPA-NDICI actions

# ENP East Region

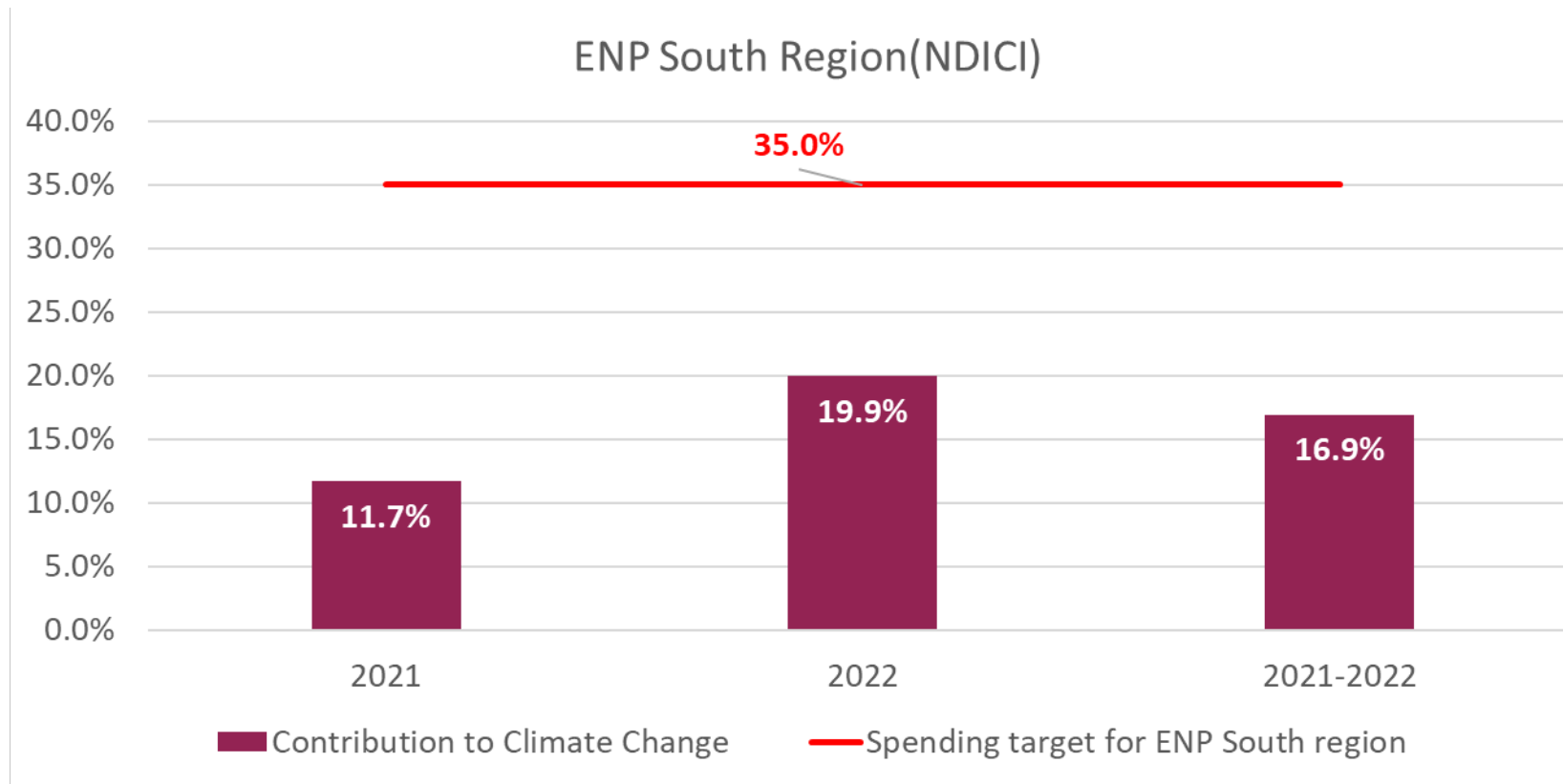




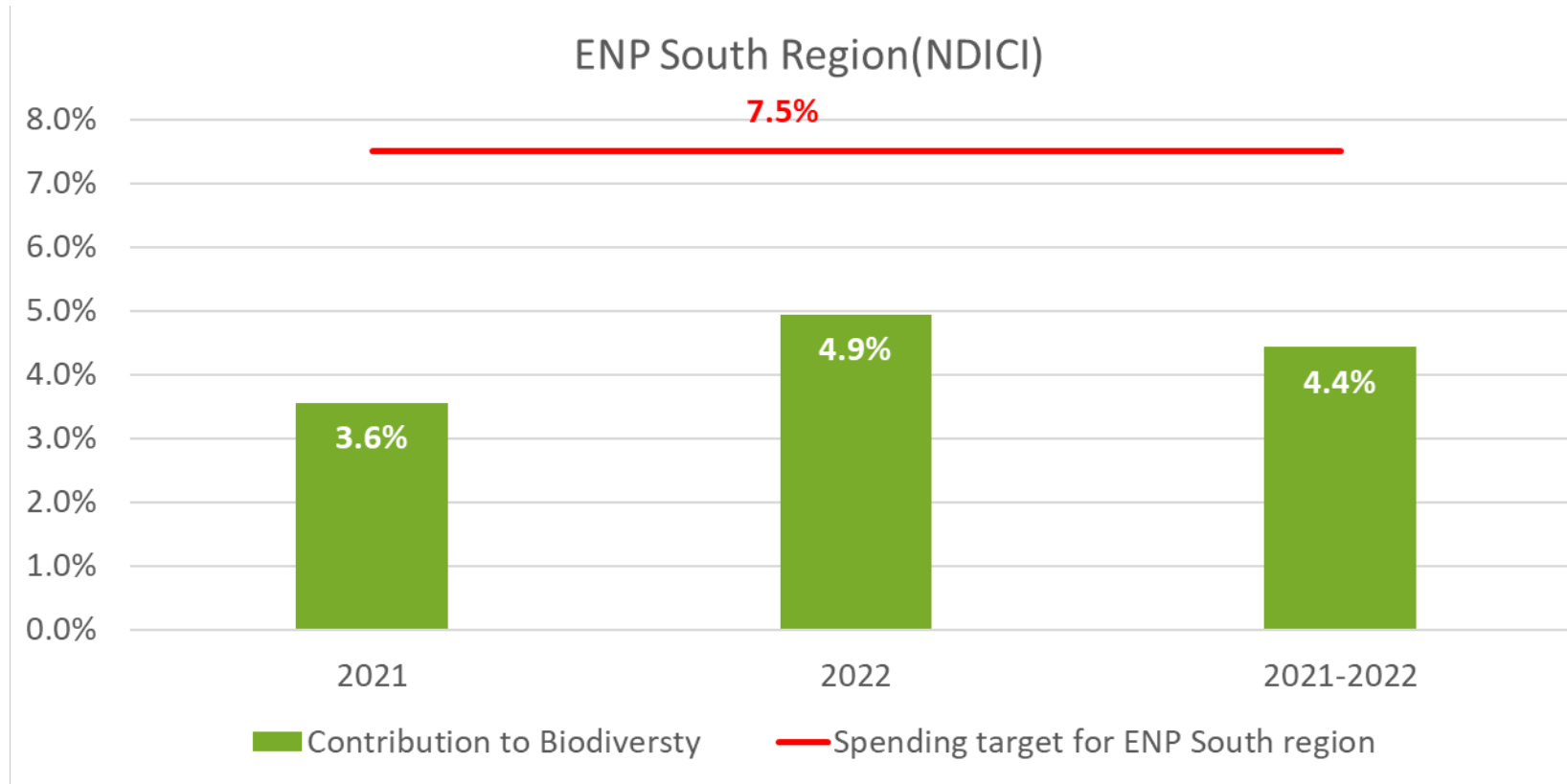
# ENP East Region



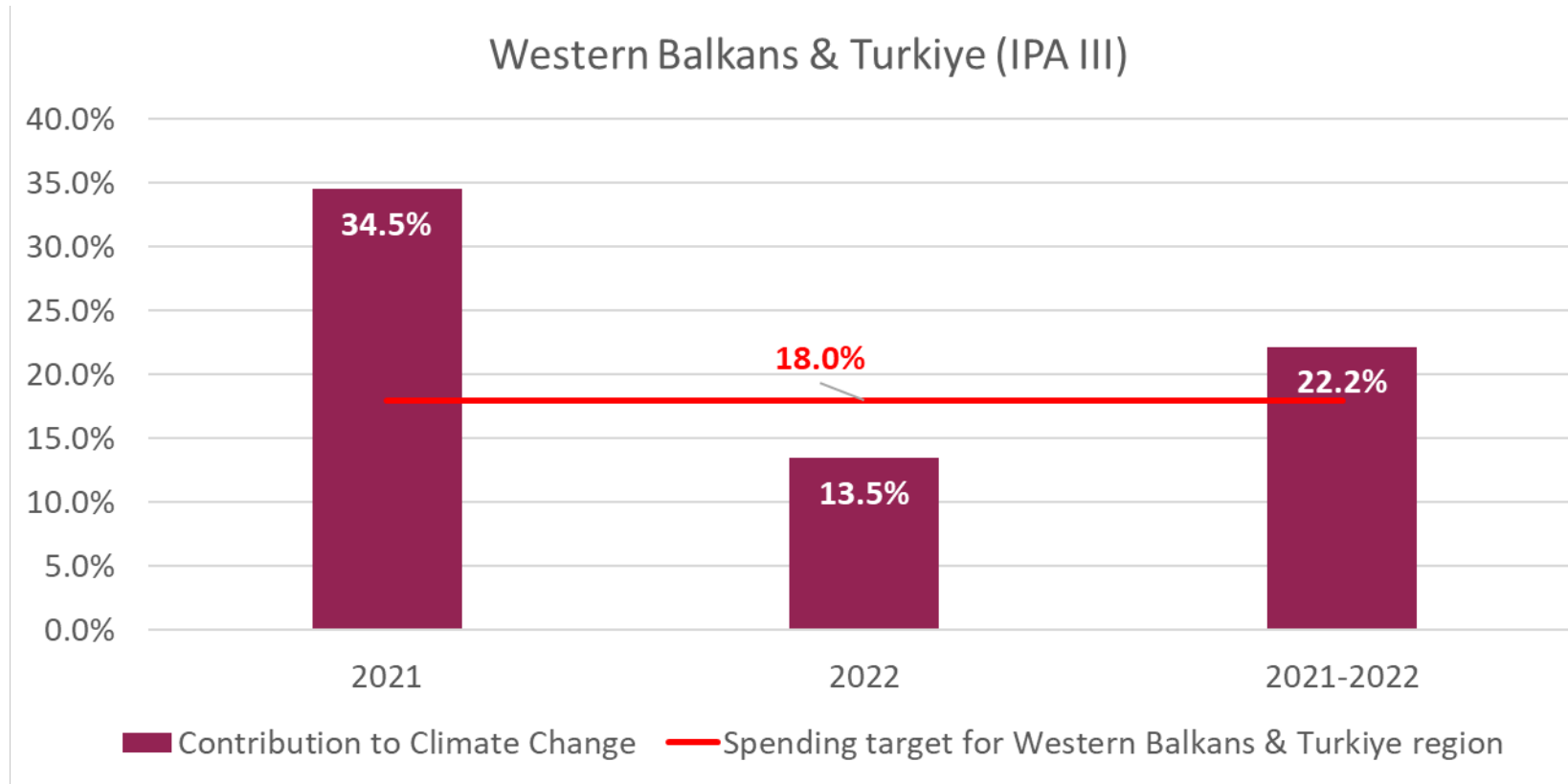
# ENP South Region



# ENP South Region



# Western Balkans & Türkiye



# Western Balkans & Türkiye

