



INTPA-NEAR Environment & Climate Week


27-31 March 2023
Brussels, Belgium



International Consortium on Combating Wildlife Crime

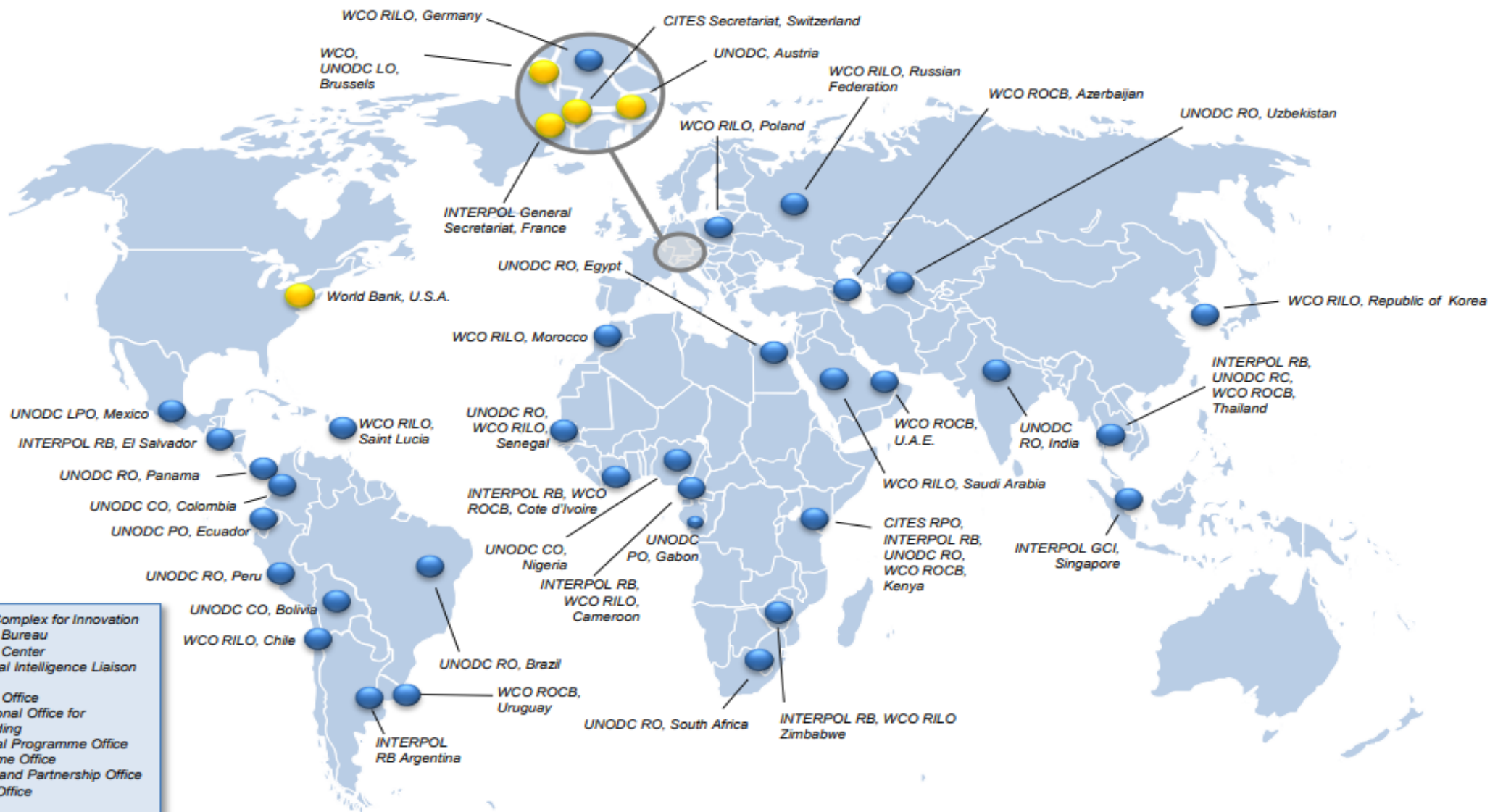
Hanny Cueva-Beteta - Head, Crimes that Affect the Environment, UNODC

Cindy Buckley - Assistant Director, Illicit Markets, Emerging and Organized Crime, INTERPOL

The logo for ICCWC (International Commission on the Causes and Consequences of War) features the acronym in a bold, black, sans-serif font. A vibrant rainbow arc, composed of multiple parallel lines in red, orange, yellow, green, and blue, curves over and under the text. The entire logo is set against a light blue background with a subtle grid pattern.

ICCWC

TOGETHER AGAINST
WILDLIFE CRIMES



ICCWC Partner Organization Headquarters

The ICCWC Senior Experts Group coordinates all ICCWC activities with their respective regional offices



Regional Hubs

All regional offices of ICCWC partner organizations

Understanding the context

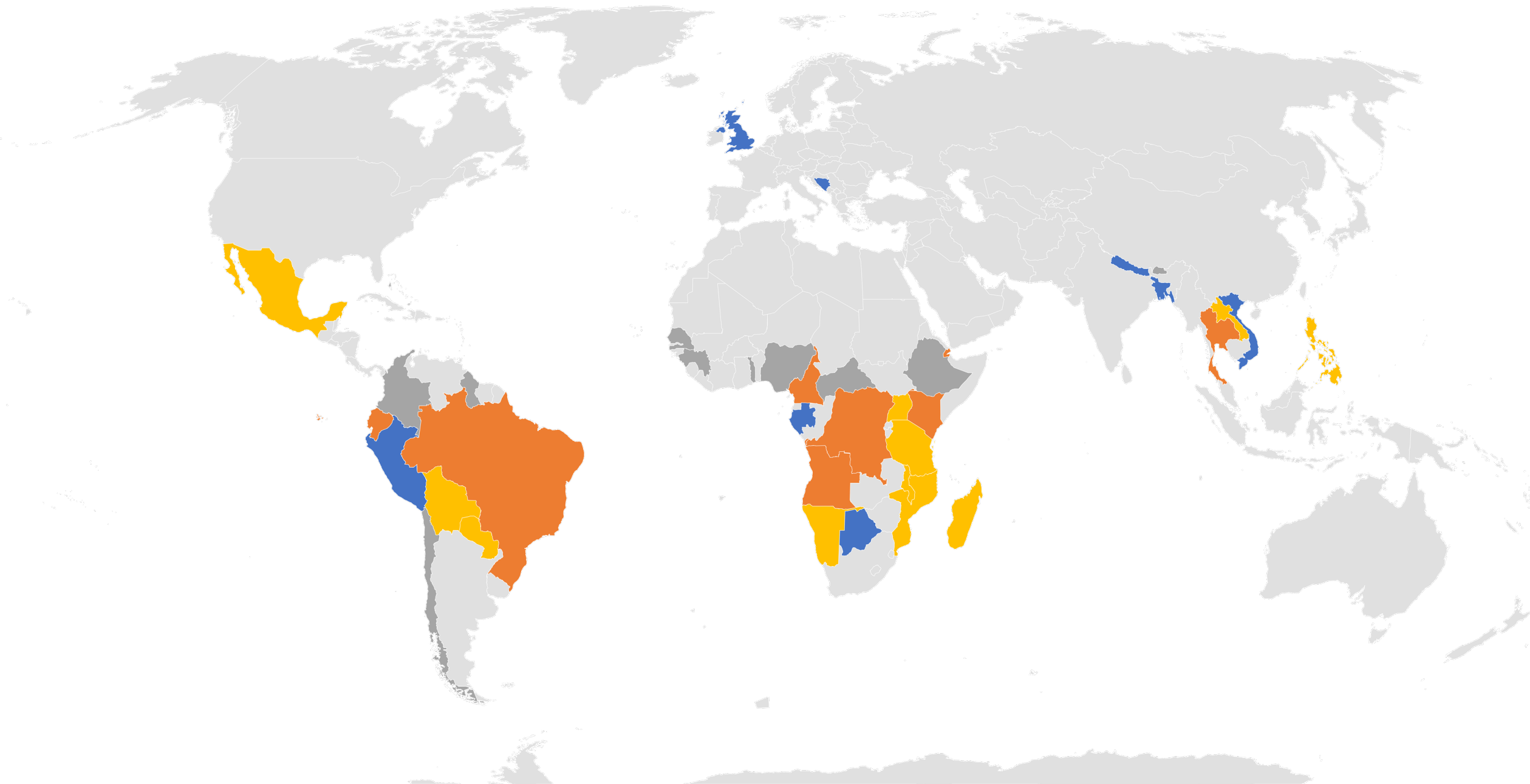
World Wildlife Crime Report

Wildlife and Forest Crime Analytic Toolkit

Wildlife and Forest Crime Indicator Framework



■ Toolkit ■ Indicator Framework ■ Requested/Ongoing ■ Toolkit & IF



Toolkit example: Lao PDR



Wildlife forensics

Then...

Bringing experts together to discuss the potential

Now...

Casework

Active networks

Institutionalized capacity

Impact

- **Vietnam lab:** 79 cases in 2022
- **Uganda lab:** 20 cases in 2022, already supporting prosecutions
- **Portable lab:** analysing seizures, stockpiles

Preventing corruption

Then...

No one looking
at this issue

Now...

3 corruption
prevention
tools

25 authorities
in 17 countries

Tangible
results

Impact

Kenya Wildlife Service scores on
Anti-Corruption Performance Indicator

- 2020: 49%
- 2021: 88%
- 2022: 100%

Addressing money laundering

Then...

Little attention
to ML linked to
env crimes

Now...

1 Env risk
assessment
tool

Technical
assistance to
15 countries

Trainings for
prosecutors

Impact

- 15 countries across Africa and Asia implemented the Env Module
- Madagascar and Mozambique included env crime issues in their national AML strategies
- Zimbabwe FIU now receiving STRs linked to env crimes

Strengthening prosecutions



Then...

Few
successful
prosecutions

Now...

Mentorship
and training

Practical tools
and guidelines

Strengthened
prosecutions

Impact

- Increase in prosecutions
- Uganda prosecutions and wildlife court



in motion. filed in court, given priority. followed up with doctors

Enhanced law enforcement cooperation

Then...

Investigation
of isolated
criminal cases

Now...

Regional
operations

Inter-regional
meetings

Strengthened
cooperation
between police,
customs and other
LEAs

Impact

- Wildlife Inter-Regional Enforcement (WIRE) platforms
- Law Enforcement Advisory Teams
- Operation Mekong Dragon

Operational successes

Vietnam-Thailand-China

Rosewood



Thailand-China

Red sandalwood



Malaysia

Ivory, Pangolin scales
Tiger parts, Rhino horn



Philippines

Pangolin



Enhanced law enforcement cooperation

Then...

Investigation
of isolated
criminal cases

Now...

Impact

- High-value targets identified and trans-national criminal networks disrupted
- Strengthened cooperation between police, customs and other LEAs

6 Global
Operations
(Customs &
Police)

2 Regional
operations and 1
cyber-patroling
(Latin America)

30 trans-national
investigations
(125 countries)

Operating Model: Intelligence-led Policing

- Mentoring on live transnational criminal cases and other capacity building activities, to prepare our Member Countries for a tactical response;
- Focus on high value targets, to identify their business model and dismantle their criminal networks;
- Strong focus on outcomes – seizures, arrests and confiscation of assets;
- Building stronger networks with member countries and relevant organizations to create awareness, while gathering relevant information to bridge intelligence gaps and provide investigative and operational support; and
- Use of the seconded police officers and other specialized tools and resources across all crime areas.



Operation THUNDER 2022

Tackling wildlife crime



125 countries



934 suspects identified

2,200 seizures of wildlife and forestry products, including:



780 kg and 516 pieces elephant ivory, and 27 elephant body parts



34 primates, 136 primate body parts



25 rhino horns



4,337 and 2,813kg marine products, including corals, eels and sea cucumbers



119 big cats and other felines



1,795 reptiles and almost 500 kg reptile parts and derivative products



9 pangolins, 389 kg pangolin scales and derivatives



47,28 m³ rosewood and 17,163 pieces / almost 47,000 m³ and 6,764 pieces other timber



750 birds, more than 450 bird parts



3.5 tonnes plants and 5 tonnes plant derivatives



1,190 turtles and tortoises, 1,304 units and 8 kg body parts



710 cacti

Thunder 2022: on-going investigations

OCT 2022

Seizure of 34.25 kg of rhino horn at Singapore Airport (Lao PDR as final destination)

NOV-DEC 2022

- Scoping mission to Lao PDR
- OST to South Africa Analytical Report

JAN-FEB 2023

Further investigation and Court Conviction in Singapore

RIACM in March 2023 (Singapore) and further investigation of larger criminal network

Thunder 2022: on-going investigations



INCIDENTS

2022

1

84.2 KG

15 OCT 2022

AIRPORT LUANDA

23 SEP 2022

26 KG

6.6 KG

3

16 NOV 2022

30.4 KG

2

2023

4

5

6

Angola

Singapore

Vietnam

20 March 2023

Seizure of 7 tonnes of ivory
Vietnamese authorities reported
the largest seizure of wildlife
products in years

Operation Thunder – Analytical Support

2017-2021

- Compilation of reporting and data
- Identifying and supporting significant cases



2022

- Compilation of reporting and data
- Identifying and supporting significant cases
- Weekly bulletins for member countries
- Strategic analysis of 2022 results and three-year data trends
- Development of a **Concealment Guide**
- Development of country and commodity profile
- Monitoring of online activity (pilot project)

Enhancing analytical capabilities

Then...

Countries' requests mostly on "how to extract the data"

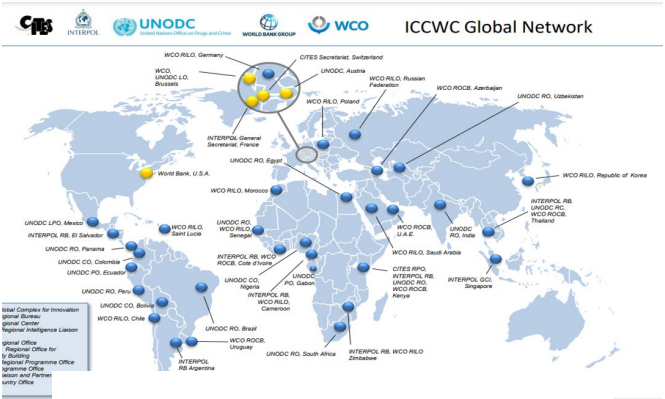
Now...

"How to use the data" – evolution of the countries' requests

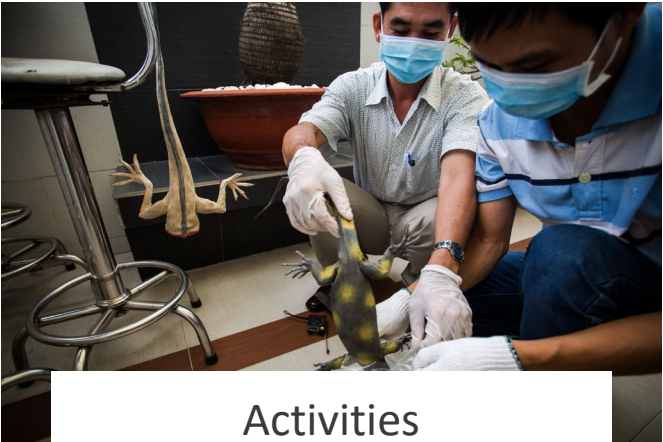
Impact

- High-value targets identified and trans-national criminal networks disrupted
- Over 200 INTERPOL Red and 55 Purple Notices issued (including those linking wildlife crime with fraud/financial crime)

Priorities for future action



Geographical location



Activities



Species

Thank you



© European Union 2023

Unless otherwise noted the reuse of this presentation is authorised under the [CC BY 4.0](https://creativecommons.org/licenses/by/4.0/) license. For any use or reproduction of elements that are not owned by the EU, permission may need to be sought directly from the respective right holders.

