

*Improving the
extractive industries in
DRC, the PROMINES
project (2013-23)*

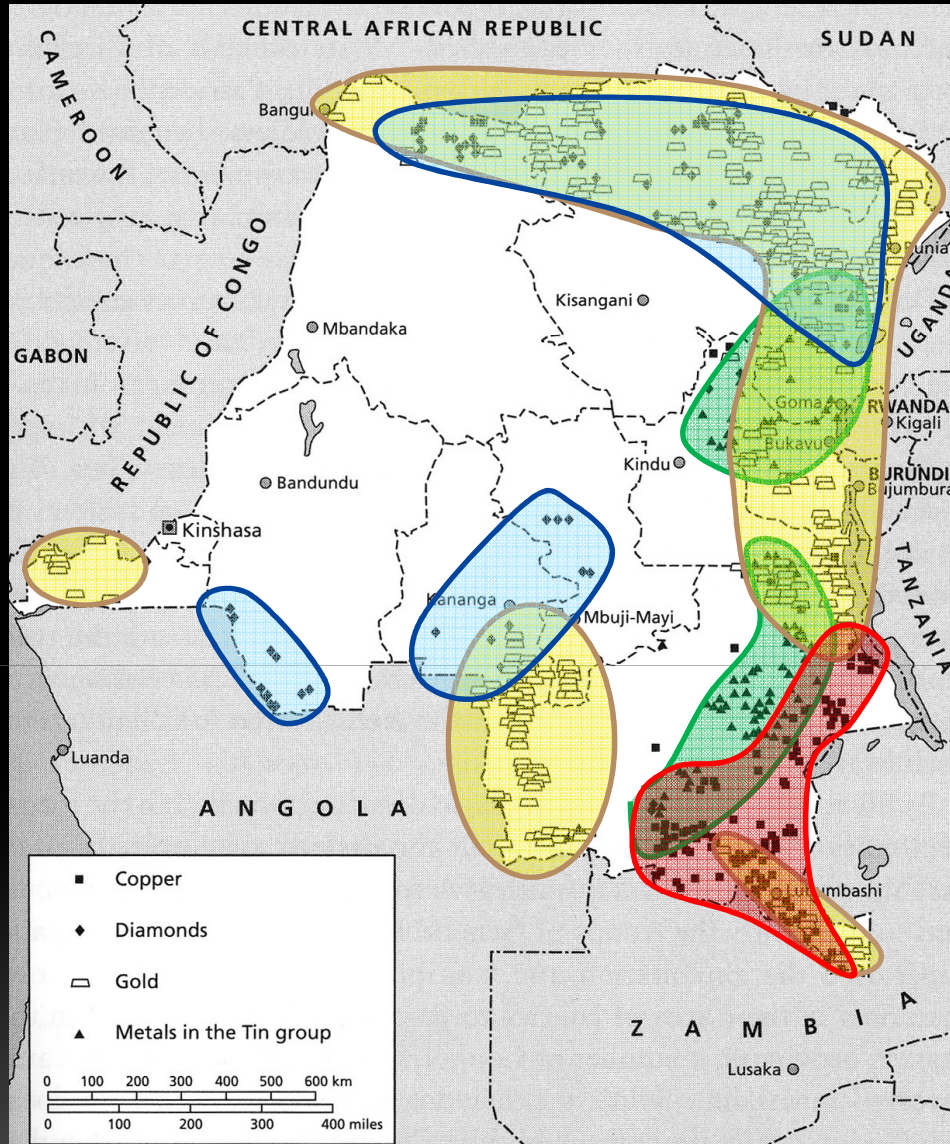
Luc André
Musée Royal de l'Afrique centrale



DFID Department for
International
Development

Africa
Africa
TERVUREN

D
R
C



Gold

Copper

Diamond

Coltan

+ Rare Earths, Platinum group, Cobalt, Germanium, U

Copper

1988

1998 - 2011



2013

2004 - 2013



A chaotic mining sector

This pressure on commodities has score of chaotic consequences for the governance of the DRC mining sectors for 5 major reasons:

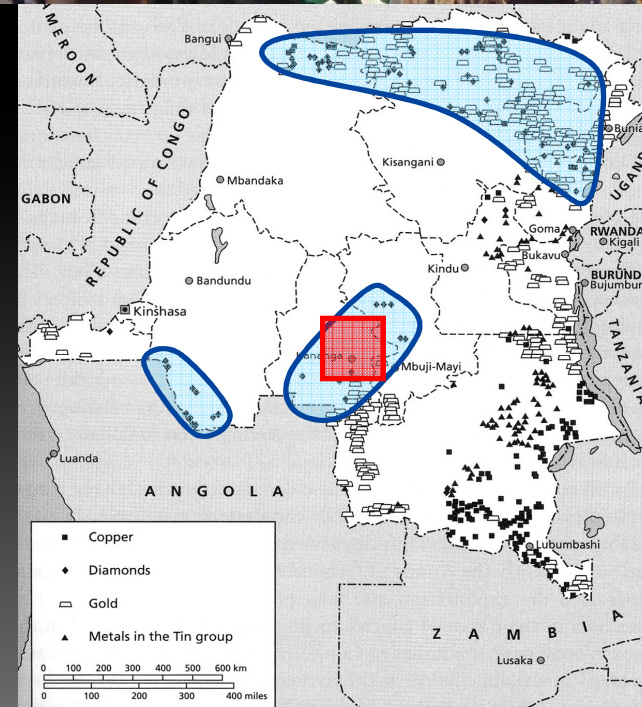
- It enhances the artisanal mining with lot of disgraceful social and environmental damages
- The lack of efficient public institutions prevents any control of such a quick-growing sector
- The outmoded geological knowledge prevents any efficient planning of the mining operations
- The available inventories being abroad in both public and private sectors, there is a very poor accessibility to any running network of inventories for the resources
- The lack of a precise geodesic network induces positioning errors which is a permanent source of conflicts

A chaotic mining sector

This pressure on commodities has score of chaotic consequences for the governance of the mining sectors in DRC for 5 major reasons:

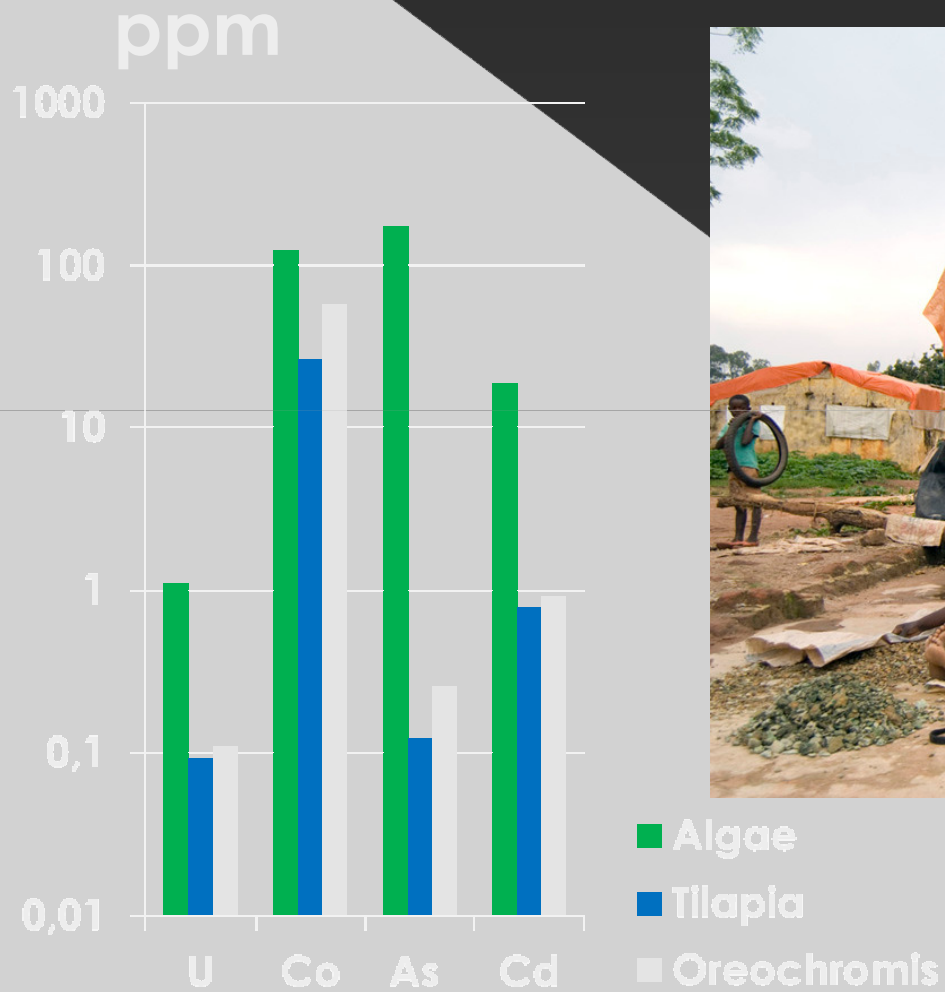
- ⑥ It enhances the **artisanal mining** with scores of disgraceful social and environmental damages
- ⑥ The lack of efficient public institutions prevents any control of such a quick-growing sector
- ⑥ The **outmoded geological knowledge** prevents any efficient planning of the mining operations
- ⑥ The very poor accessibility to any running network of inventories for the resources, the available inventories being abroad in the public and private sectors
- ⑥ The lack of a **precise geodesic network** enhances positioning errors which is a permanent source of conflicts

Kasai/Diamond



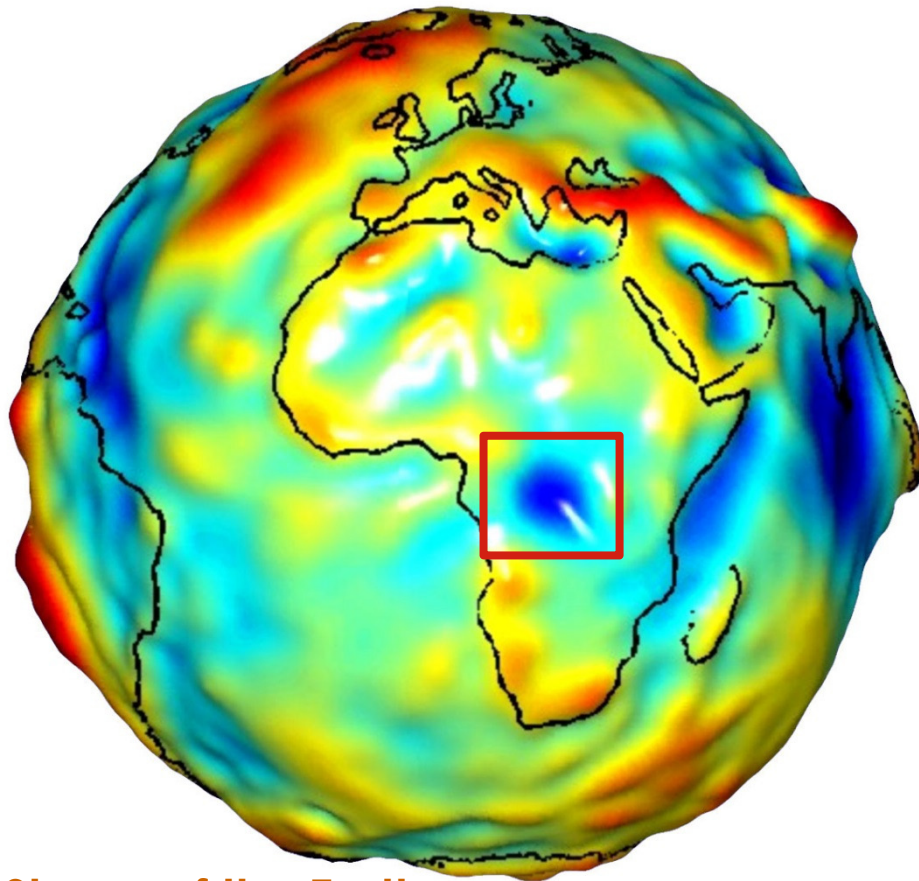
Diamond

Huge impacts on the environment



Katemo Manda et al., 2011

The gravity anomaly Its impact on mapping



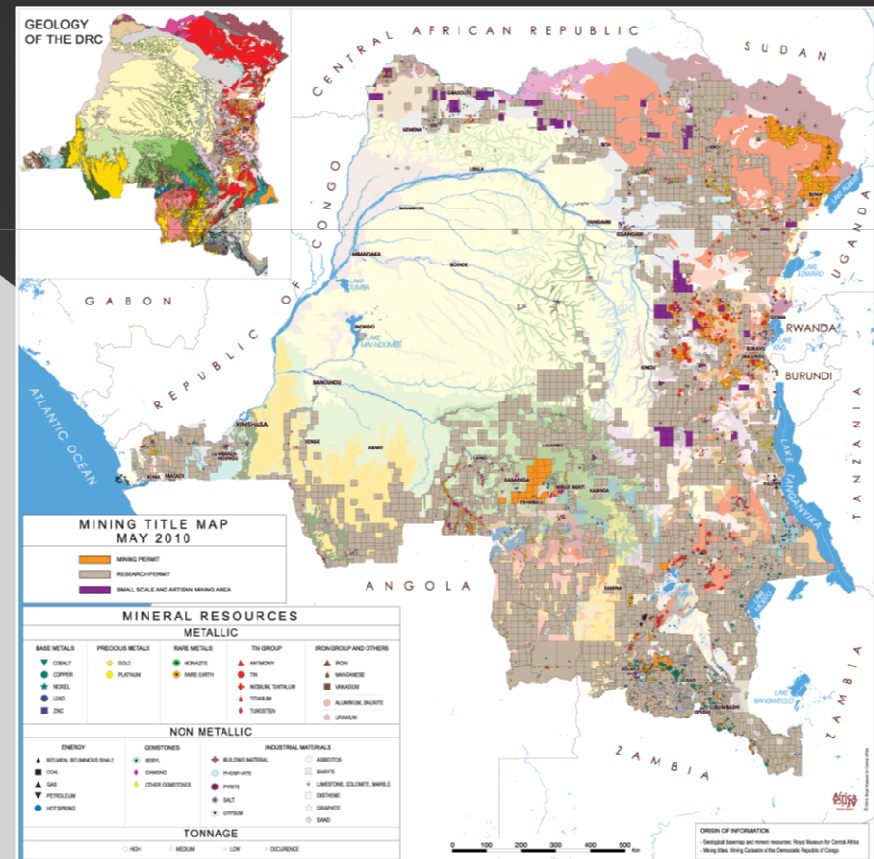
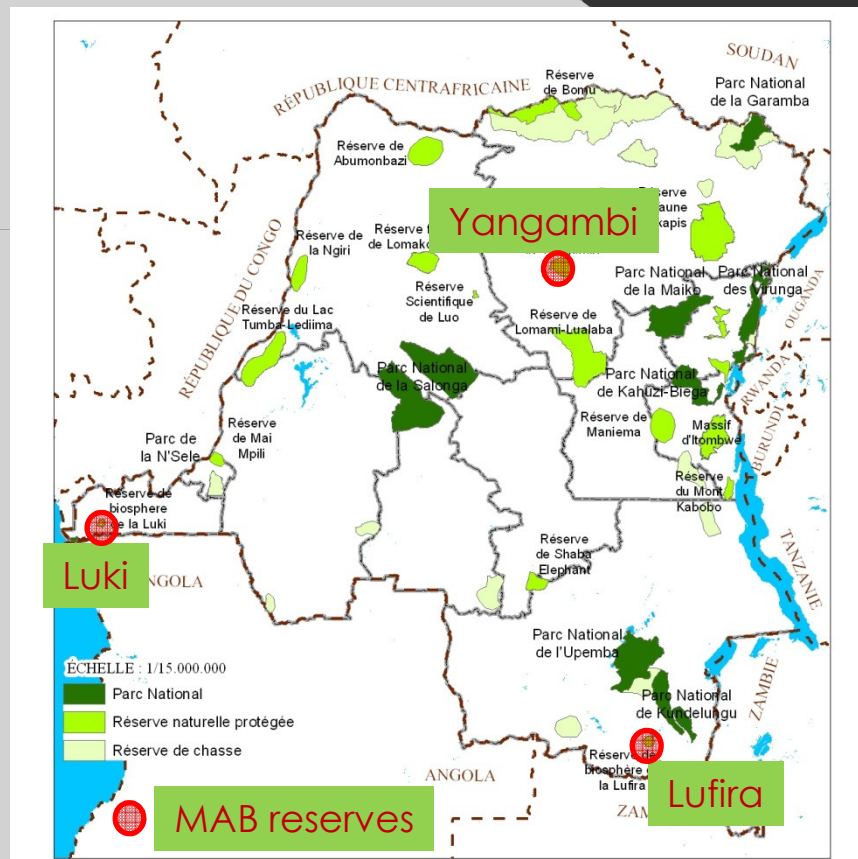
Shape of the Earth



The challenge: Integrate parks within the polygons

○ Parks and MABs

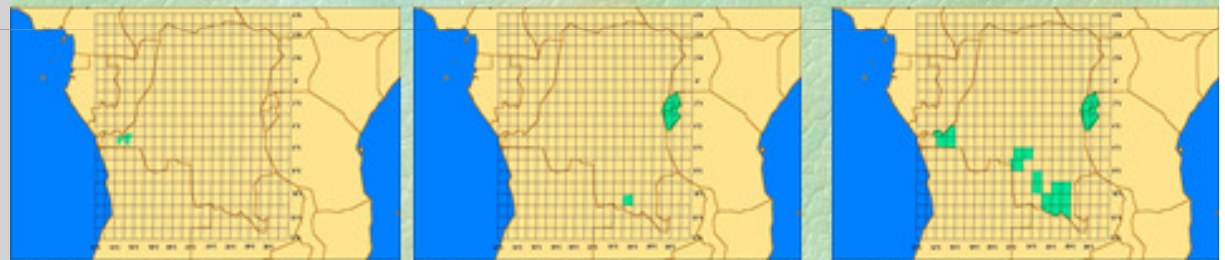
○ The permits



Outmoded Geological knowledge (>50 years)

A very poor Geological map covers

Geological Maps



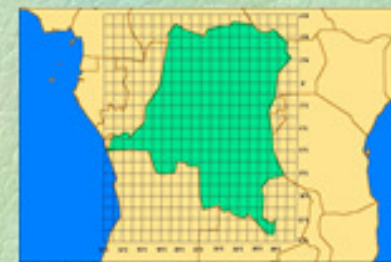
1/50.000

1/100.000

1/200.000



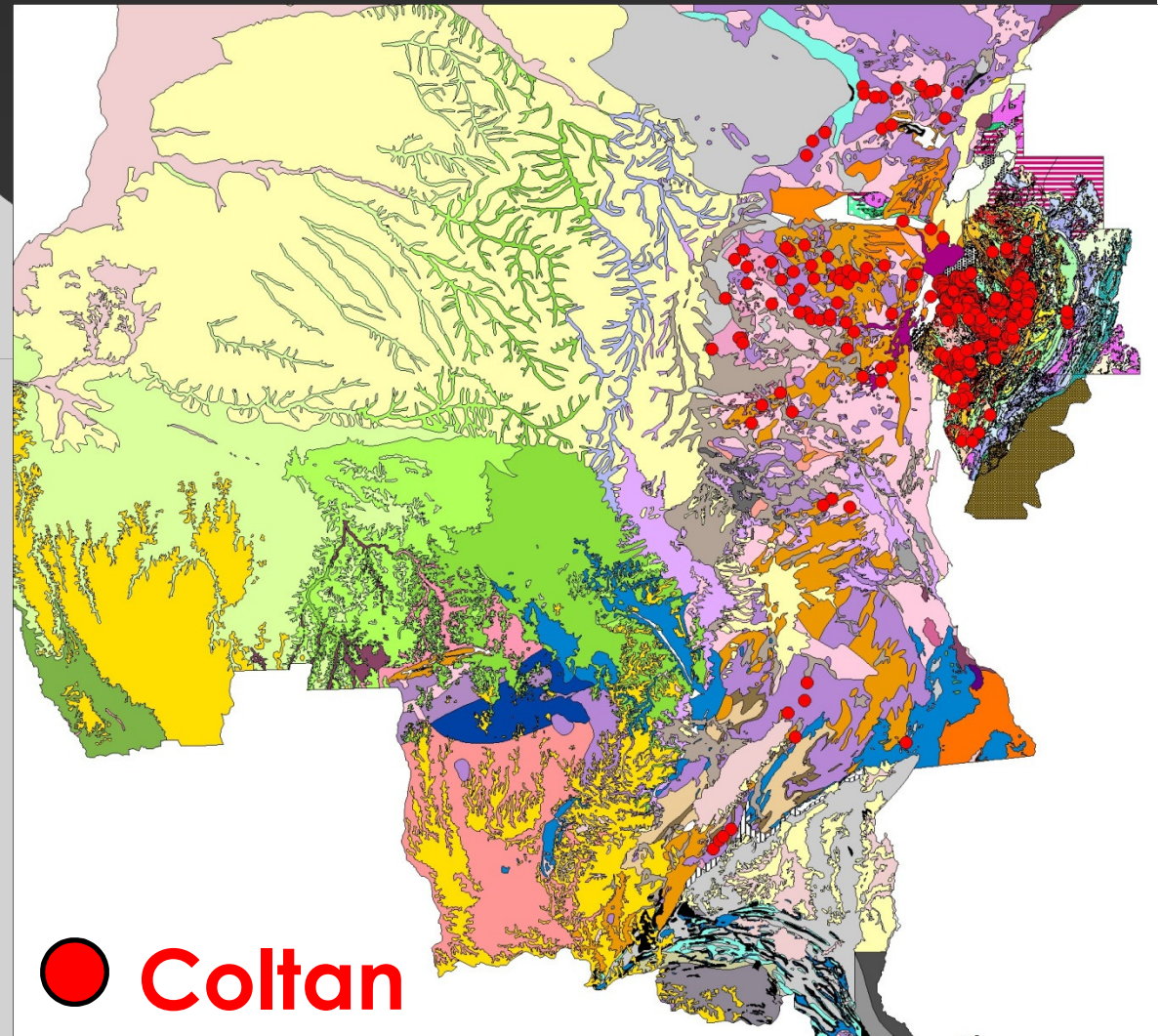
1/500.000



1/2.000.000

Importance of a good Geo-prospecting

The difference
between
Rwanda,
Burundi
And DRC



Purpose

- Improve the governance of the mining sector and its contribution to the economic growth and to the sustainable development at all stages (national to local)

Specific objectives

- Increase of the mining production and its added value
- Strengthening the public institutions in their capacity to manage the sector in a effective and transparent way
- Improve the capacity of the Government to channel income and profits produced by the sector for a sustainable economic development

In the frame of the EITI++ (Extractive Industries Transparency Initiative)

EITI++ seeks to work with all developing countries, even as the initial focus is on Sub-Saharan Africa.

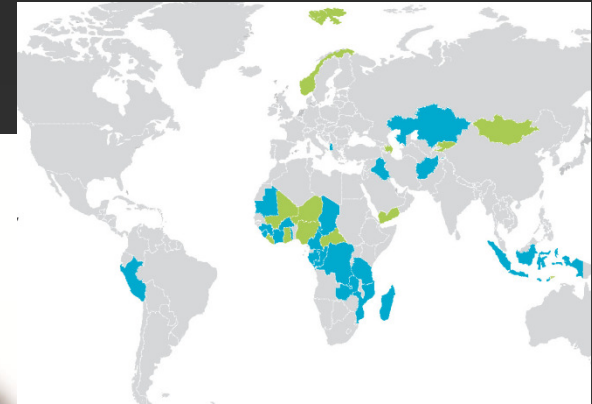
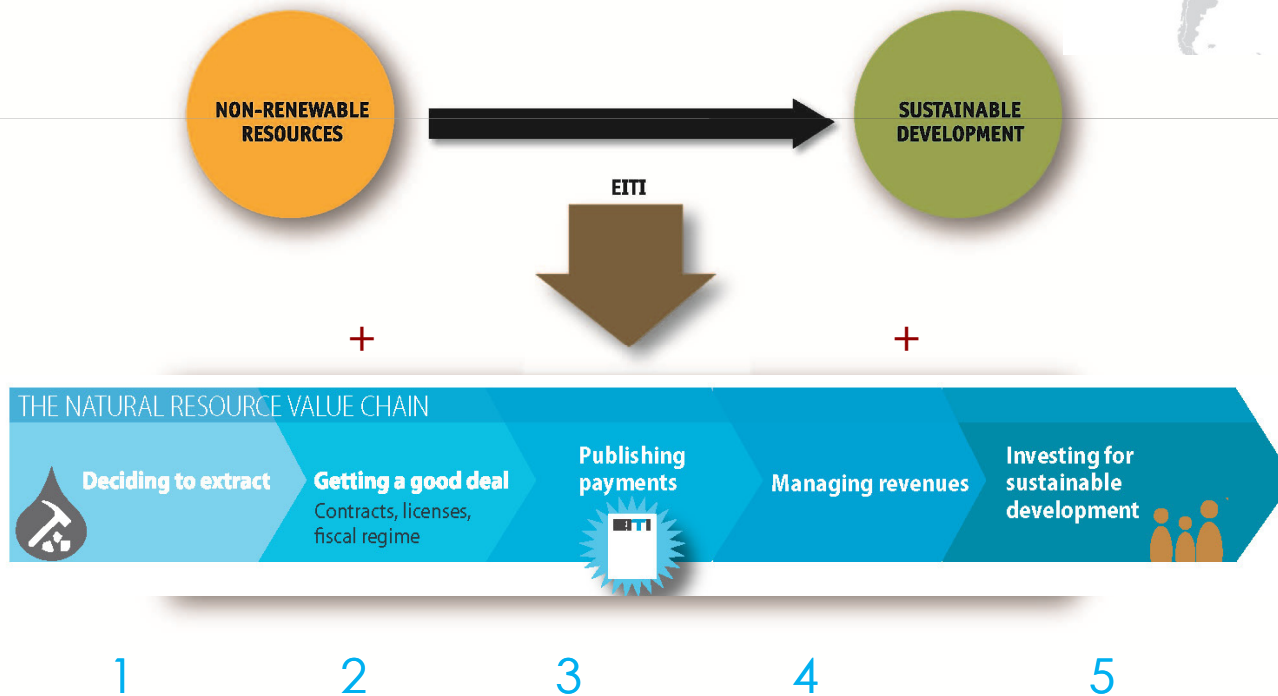


FIGURE 1: VALUE CHAIN FOR EXTRACTIVE INDUSTRIES

Extractive Industries for Development Series
Africa Region Working Paper



Secteurs d'interventions en RDC

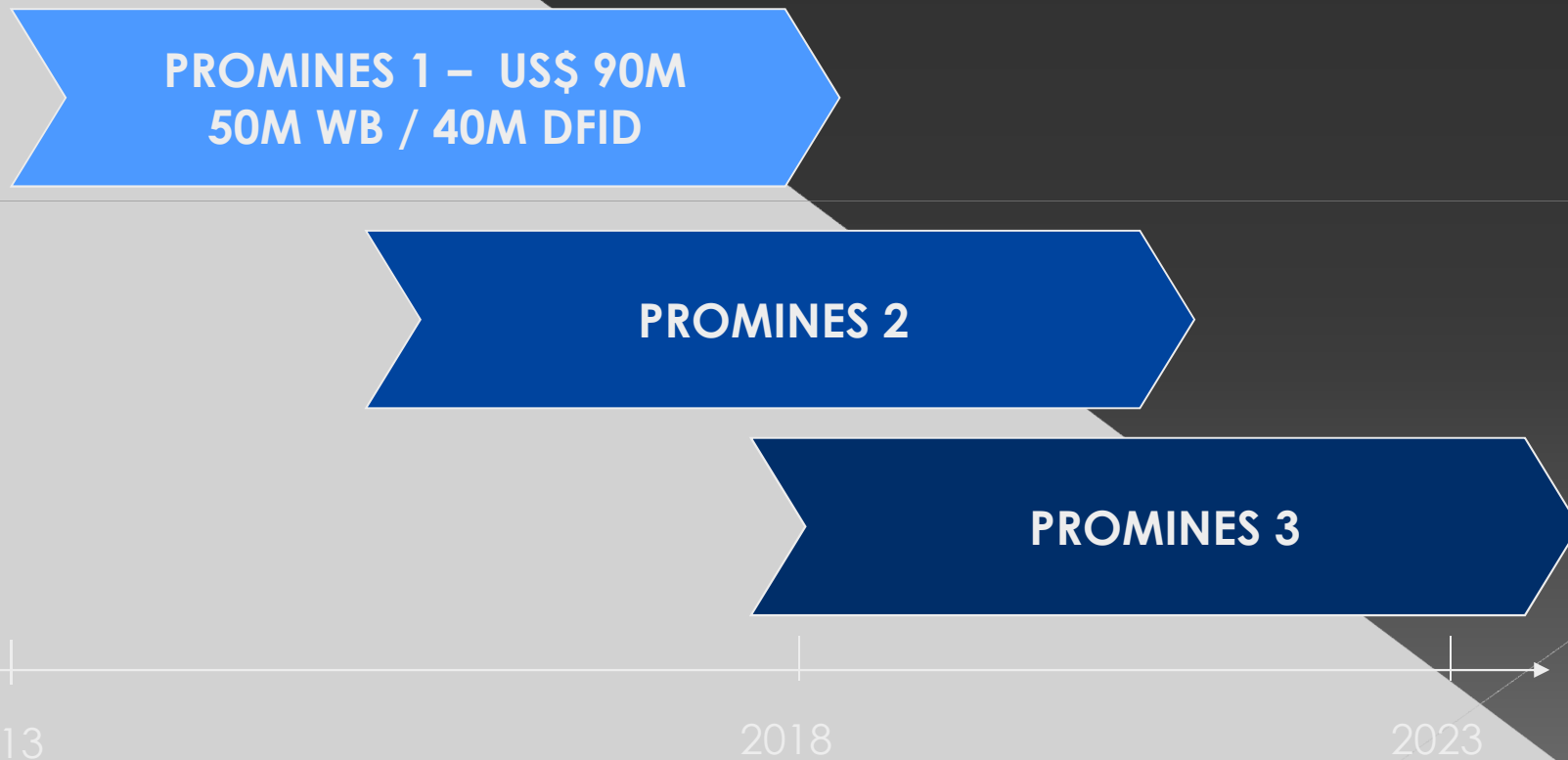


	PROMINES		PROMINES	
BM		EITI	PRCG	
	PSDC			PSDC
		PFM		
		DPO		MTP
				Energy
Bi / Multi		DFID		DFID
		CTB		CTB
	PAG/EU			PAG/EU
		GTZ/BGR		GTZ/BGR
		MONUC		MONUC
		USAID		USAID

PROMINES phasing

The program would cost an estimated US\$200-400 million, depending on the high or medium priority of the actions to be undertaken.

To be implemented in 3 phases (high → medium priority).



PROMINES 1: 2013-18

COMPONENTS

A. Mining inventory: Insure the Access to the Resources

B. Training: Strengthen the Capacities of Sectorial Management

C. Legal: Improve the Transparency and the Empowerment

D. Environmental: Set up the Bases of a Sustainable development

E. Coordination and Management of the Project

TOTAL

millions USD

31,0

24,6

5,4

17,7

11,3

90,0

Insure the Access to the Resources

● A1. Political, legal and statutory frame

- › Improve the mining code and the cadastral survey of the mining permits
- › Consultations on how to get a solid legal statutory frame to implement a transparent management of the sector
- › Evaluate the extension of the Artisanal mining

● A2. Geological frame

- › Strengthening a national geodesic network
- › Quantify the available resources for a series of strategic ores
- › Airborne geophysics on priority zones
- › Geological investigations on priority zones
- › Implement a national geological data bank

The Africamuseum as an expert for the DRC government

- Establish the terms of reference and the specifications for the selection of the institutions which will execute the various tasks
- Supervise and coordinate the companies executing the various tasks, checking the scientific validity of the outcomes
- Help the DRC Ministry of Mines for the final reception

Insure the Access to the Resources and the need for appropriate raw, processed and analysed space-based instrument datasets

● A1. Political, legal and statutory frame

- Improve the mining code **and the cadastral survey of the mining permits**



- **Evaluate the extension of the Artisanal mining**



● A2. Geological frame

- **Strengthening a national geodesic network**
- Airborne **geophysics on priority zones**





Africa
Africa
TERVUREN

Nyiragongo lava lake, DRC