



Larger than elephants

EU Strategic Approach to Wildlife Conservation in Africa



Simple problem ?



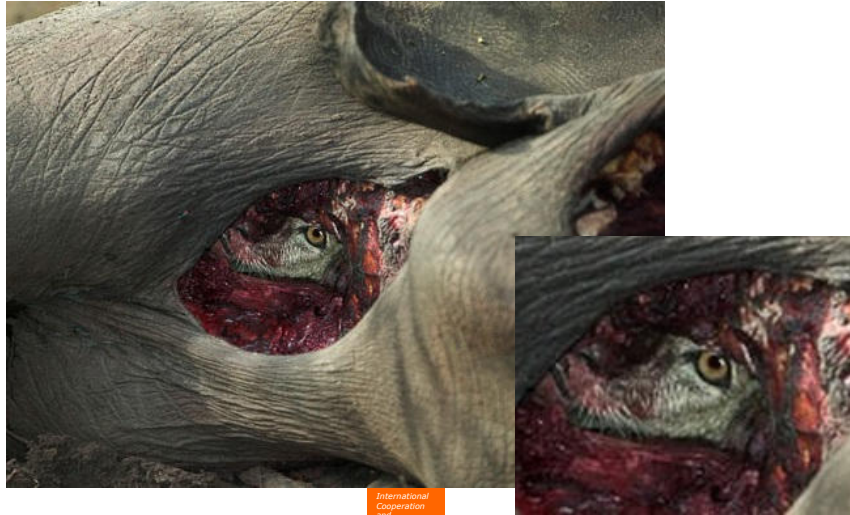
35,000 elephants

\$ 23 billion trade





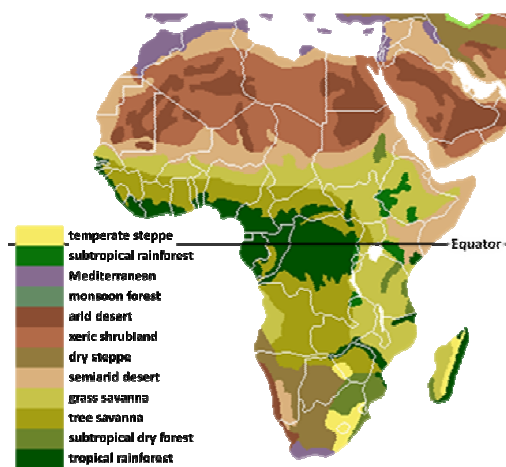
Or new perspective?



International
Cooperation
and
Development

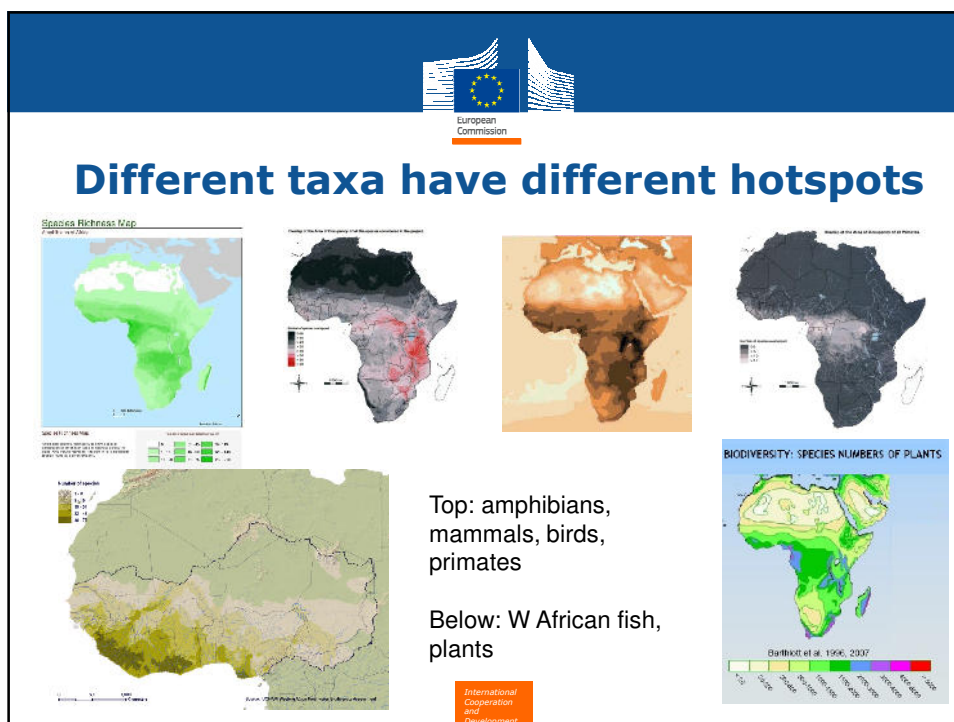
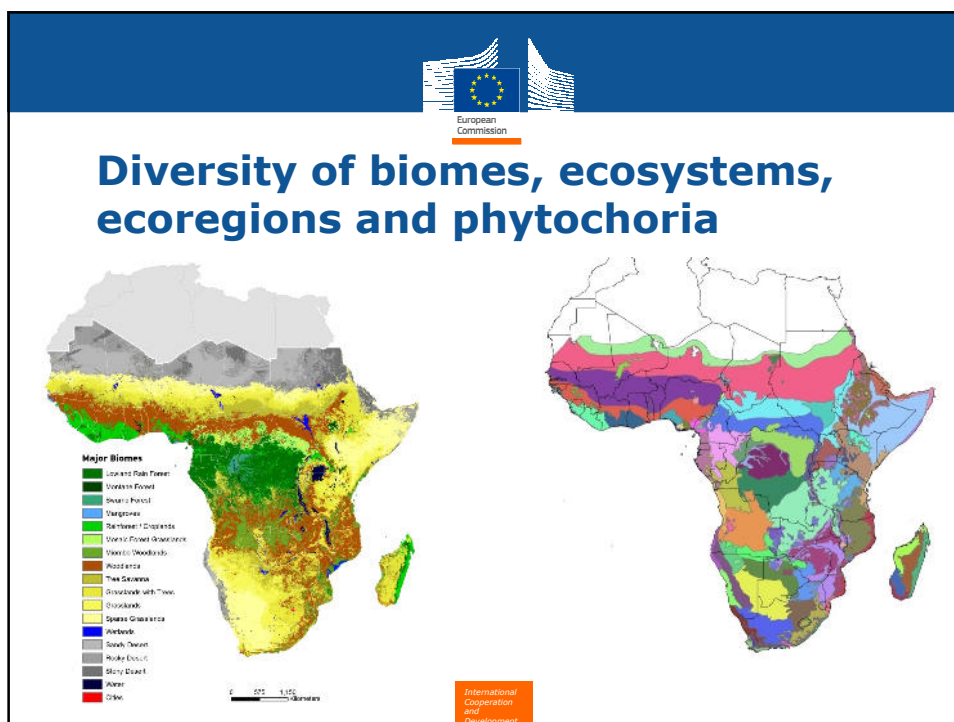


Africa – the iconic wildlife continent



- Forests, savannahs, mountains, wetlands, deserts – camels to penguins
- Home of the 'big five'
- Cradle of Mankind
- Last great migrations of mega-fauna
- High diversity, high endemism
- Unique Madagascar mini-continent, lemurs etc.
- Valuable endemic fish resources

International
Cooperation
and
Development

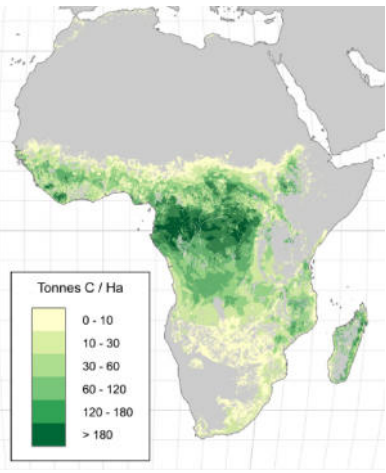




European Commission

State of the ark?

International Cooperation and Development




Vanishing forests

- Out of 37 African states containing significant forest cover only 10 countries retain more than 40% of their original forests
- 22 countries have lost more than 80% of their original forest
- 14 countries have lost more than 90% (WCMC, 2004)
- Droughts in the Sahel zone can be partly attributed to loss of forest in the tropical zone.

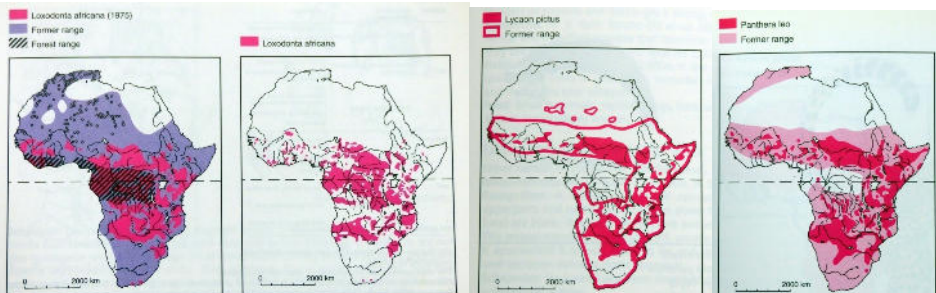
European Commission


International Cooperation and Development


 European Commission

Vanishing mammals

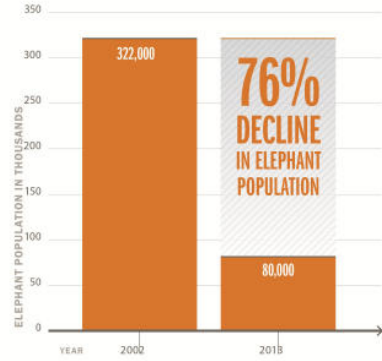
Quagga, Western Black rhino, Bluebuck – extinct
Forest elephant, Addax – (ten years?)
Many in critical state – pygmy hippo, mountain gorilla
Hundreds threatened – cheetah, forest primates etc.
Dramatic range shrinkage (elephant, wild dog, lion)




 European Commission


Poaching, wildlife crime and security

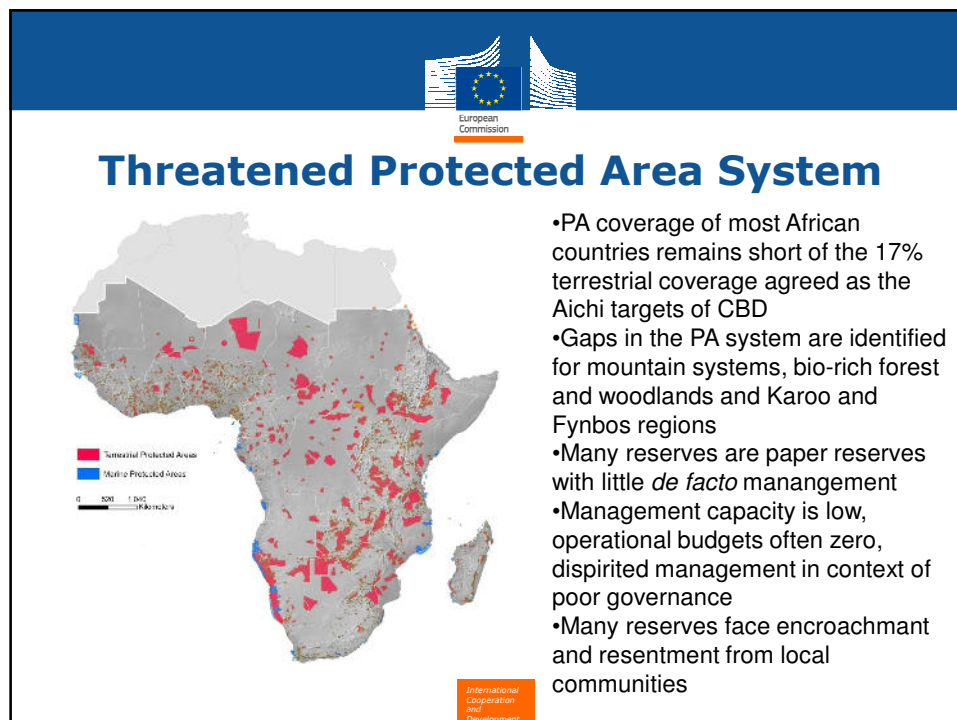
- 25,000-35,000 elephants poached in 2012
- Bushmeat supply exhausted in many areas
- Wildlife crime large-scale and international, estimated at \$10-20 billion/annum
- Prices of ivory and rhino horn soaring as result of growing demand in Asia
- Money from poaching fuels several terrorist groups and insurgencies



Year	Elephant Population (thousands)
2002	322,000
2013	80,000

African forest elephant populations declined by three-quarters from 2002 to 2013.


 International Cooperation and Development





New threats emerging

Population expected to double by 2050, despite being already very poor, with inefficient agriculture and low health or governance. All put extra pressure on natural resources

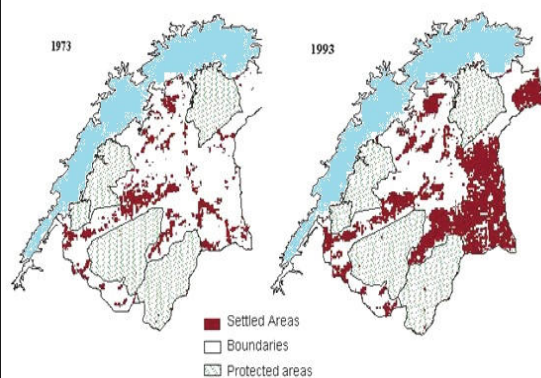
Climate is changing posing great challenges to survival and adaptation of native wildlife

Huge development taking place – new roads, dams, mines, towns and service centres

International
Cooperation
and
Development



Population pressures



Settlement infilling near Lake Kariba



Animal fences in Namibia

International
Cooperation
and
Development



Global dimensions

Insatiable appetite for ivory and rare timbers in China

Irrational demand for rhino-horn in Vietnam

Global demands for Africa's wealth of minerals, gems, rare metals and oil

Overseas demand for bush-meat

Over-fishing of off-shore fisheries

Export of charcoal to Middle East

Globalization of trade, trafficking and extremism

Growing exodus of refugees

International
Cooperation
and
Development



Loss of vital ecosystem services

> \$10 trillion/year for Africa, far higher than actual registered GDP !

Water sources drying and polluted, diseases spreading

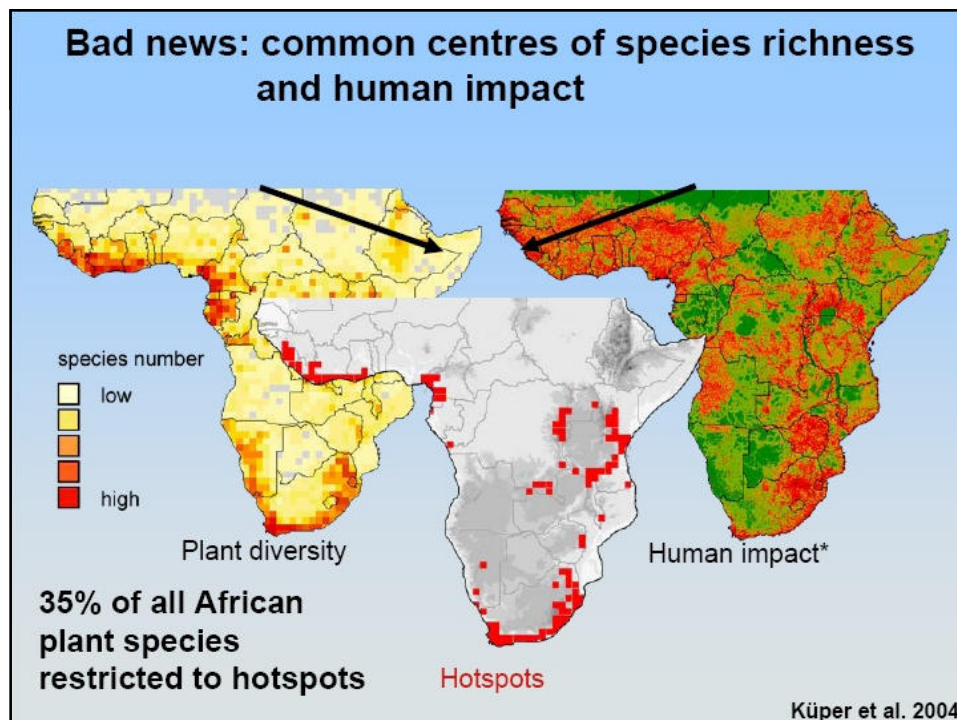
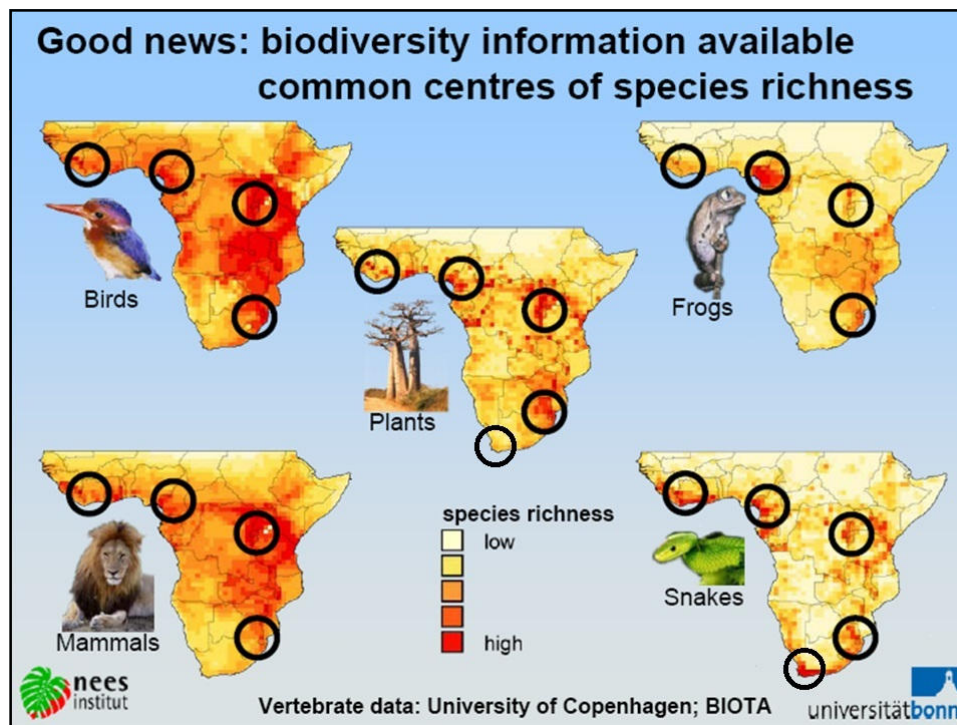
Grazing areas degraded causing population migrations

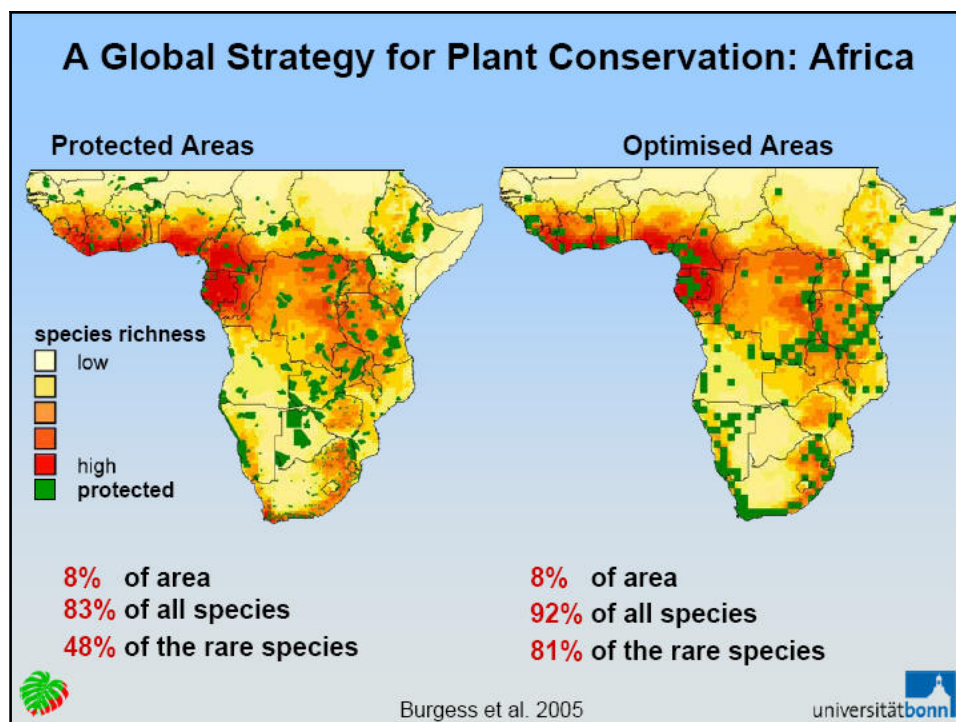
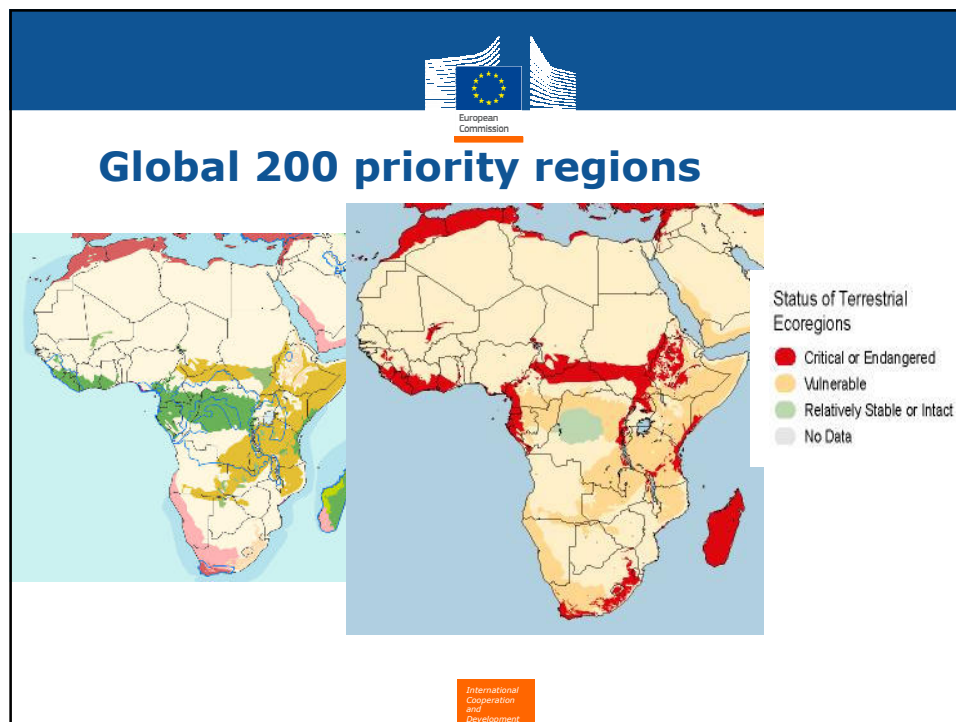
Agricultural fertility lost resulting in famines and expensive aid programmes, bad loans

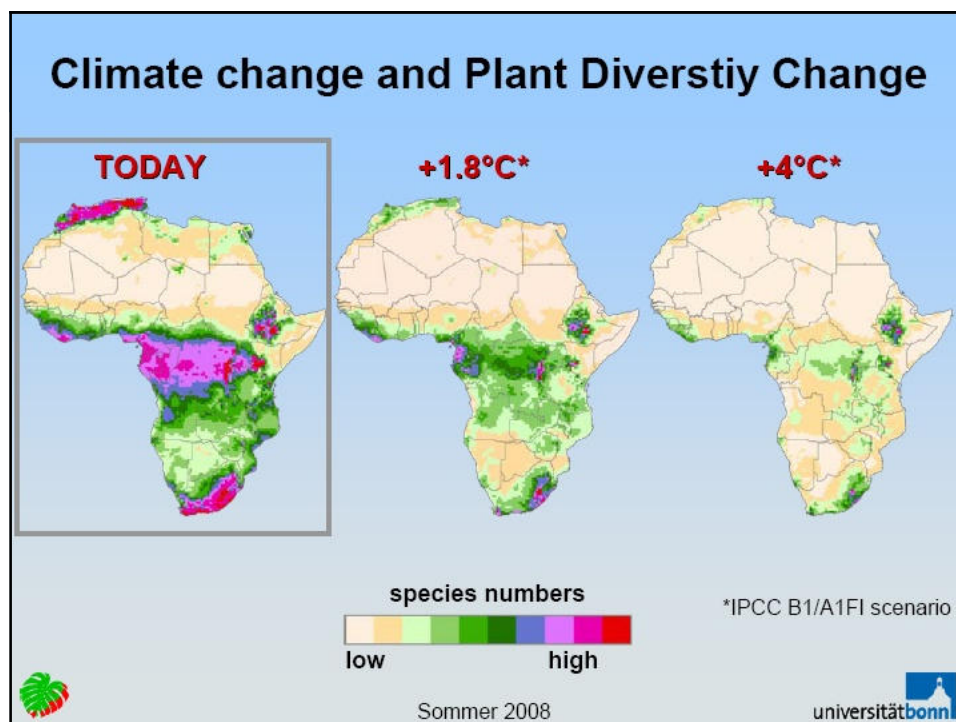
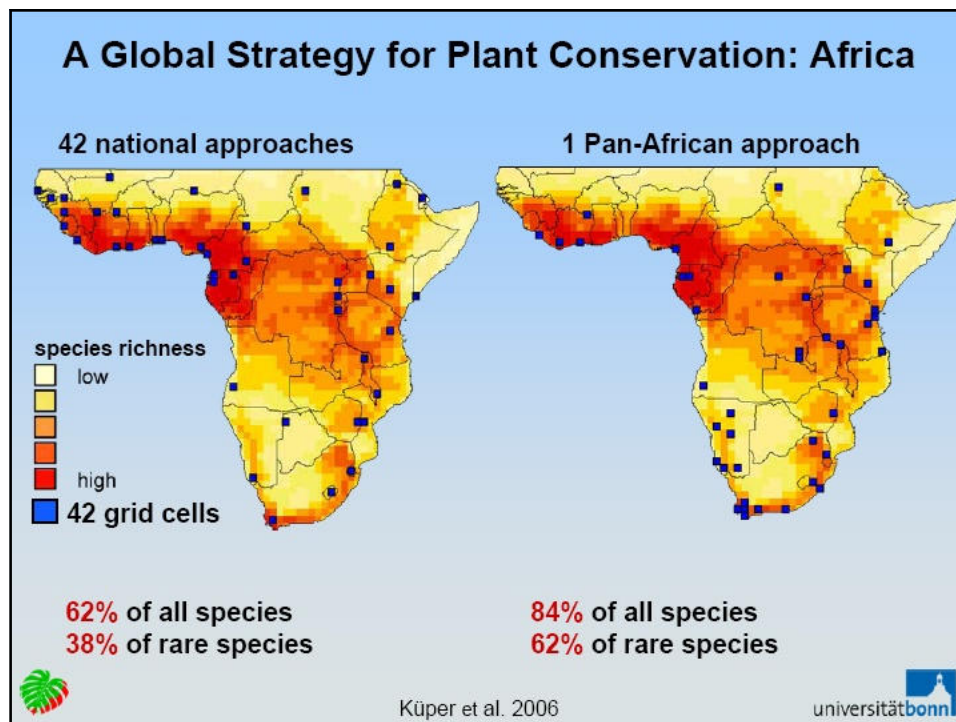
Loss of non-timber harvest of game meat, fish, honey, medicinal plants etc.

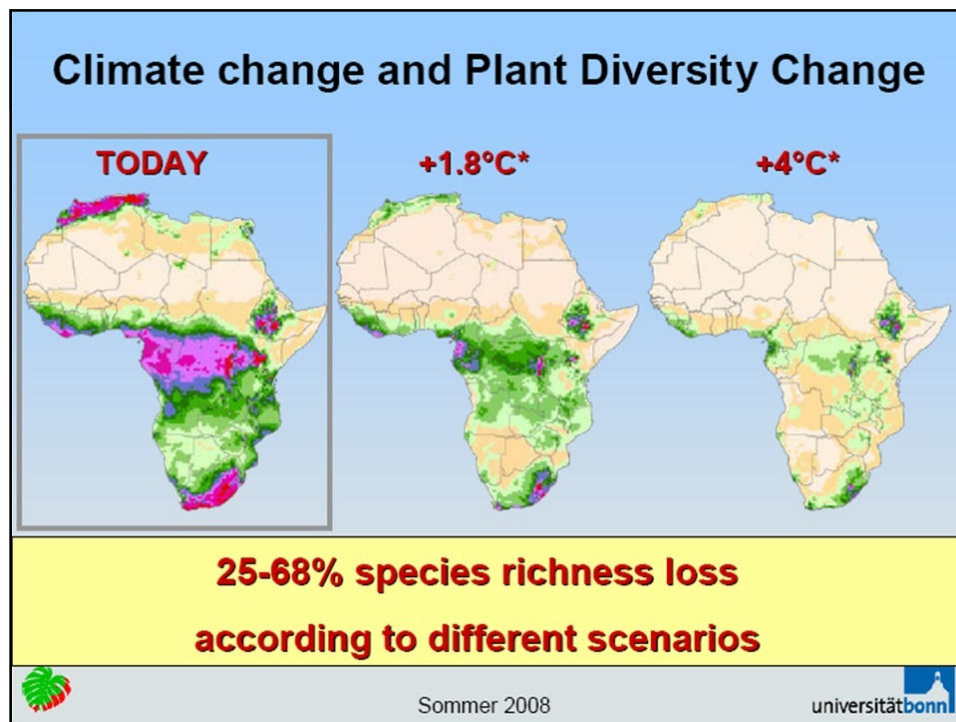
Loss of tourism revenues and potential

International
Cooperation
and
Development











European Commission

Why should EU help?

- EU commitment to biodiversity (most of Europe's migratory birds winter in Africa!)*
- EU commitment to climate change*
- EU commitment to alleviate poverty*
- EU commitment to human rights*
- EU commitment to security and counter terrorism and international crime*
- EU has the funds, capacity and political back up to do the job***



International Cooperation and Development



Where can EU help?

Create a flexible streamlined funding mechanism to allow rapid response to combat emergency crises, natural disasters, changing circumstances and longer term projects

Concentrate on site-level conservation bringing holistic state of art approaches to a wide range of landscape-scale key sites

Support international efforts to strengthen anti-poaching, close trafficking and reduce demand in user countries (including soft diplomacy)

Focus its research capabilities on supporting the overall practical programme

Better mainstream regional and national cooperation programmes to include wildlife issues, governance and population

International
Cooperation
and
Development



Support to key sites

Natural World Heritage sites listed under biodiversity criteria x UNESCO MAB Sites

Important Bird Areas (IBAs) identified by BirdLife International

Key sites identified in Species Survival Plans developed under IUCN

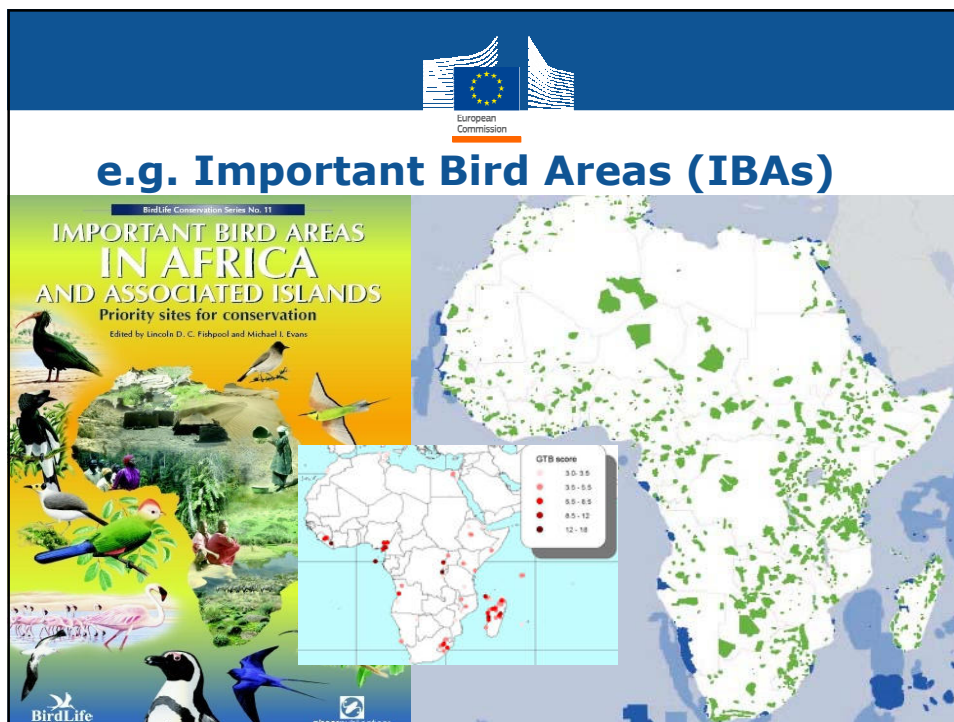
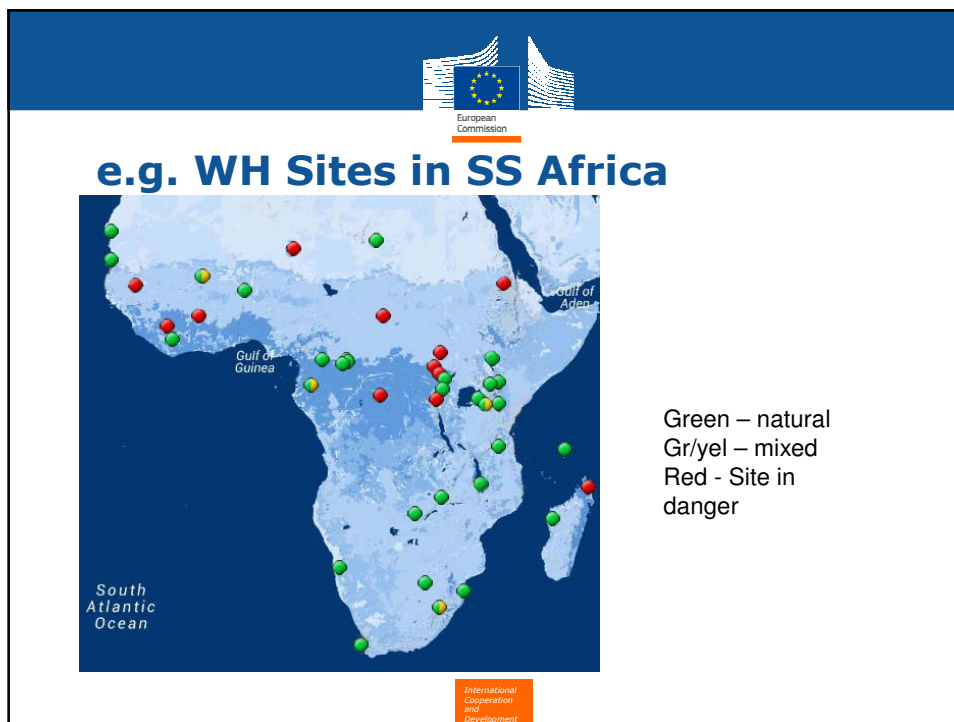
Ramsar Sites and potential Ramsar Sites identified by Wetlands International

Larger Ecosystem reserves (>500,000 ha), entire mammal migrations

Key migratory bird wintering and stopover sites identified under Africa-Europe Migratory Pathway Programme

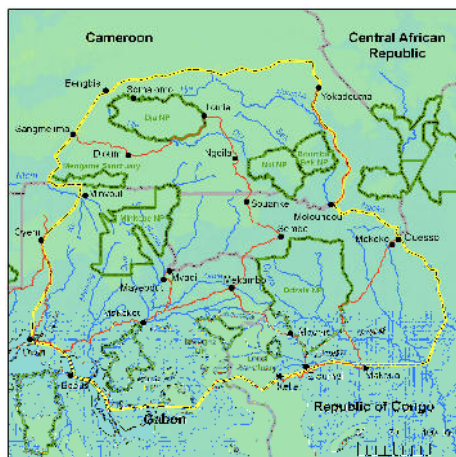
Broad landscape plans, Trans-border conservation management areas

International
Cooperation
and
Development





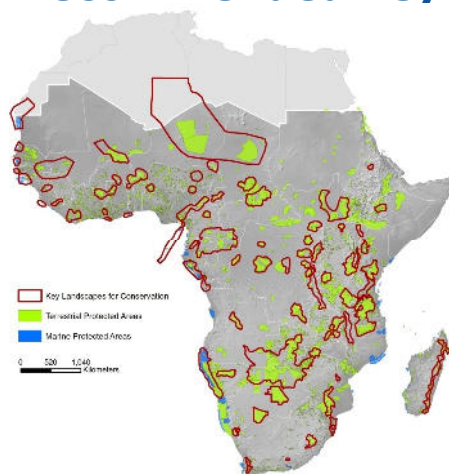
Landscape approaches – TPCA, etc.



International
Cooperation
and
Development



Recommended key sites



Cooperation
and
Development



The cost?

Support for 70 KLC € 500 million /year

Support for total PA system € 1 billion/yr

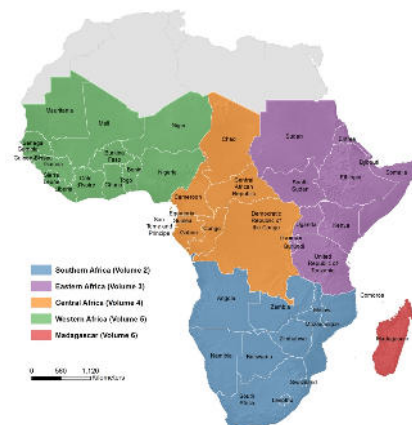
Africa conservation trust fund needed

€ 6 billion for 10 years

International
Cooperation
and
Development



**The four regional
volumes provide
more specific
details and
recommendations**



International
Cooperation
and
Development



Stronger African Conservation Ethos based on indigenous values and beliefs



'I know of no political movement, no philosophy, and no ideology which does not agree with the peace parks concept as we see it going into fruition today. It is a concept that can be embraced by all.'

Nelson Rolihlahla Mandela, 1918
– 2013

International
Cooperation
and
Development



Acknowledgements

Thanks Dankie Merci Asante
Zikomo E dupe Kea leboha

谢谢 شكرا Misaotra anao

Obrigado Mahadsanid
Ngiyabonga

International
Cooperation
and
Development