



## BIOPAMA Regional Observatories and Reference Information System

Steve Peedell  
European Commission Joint Research Centre



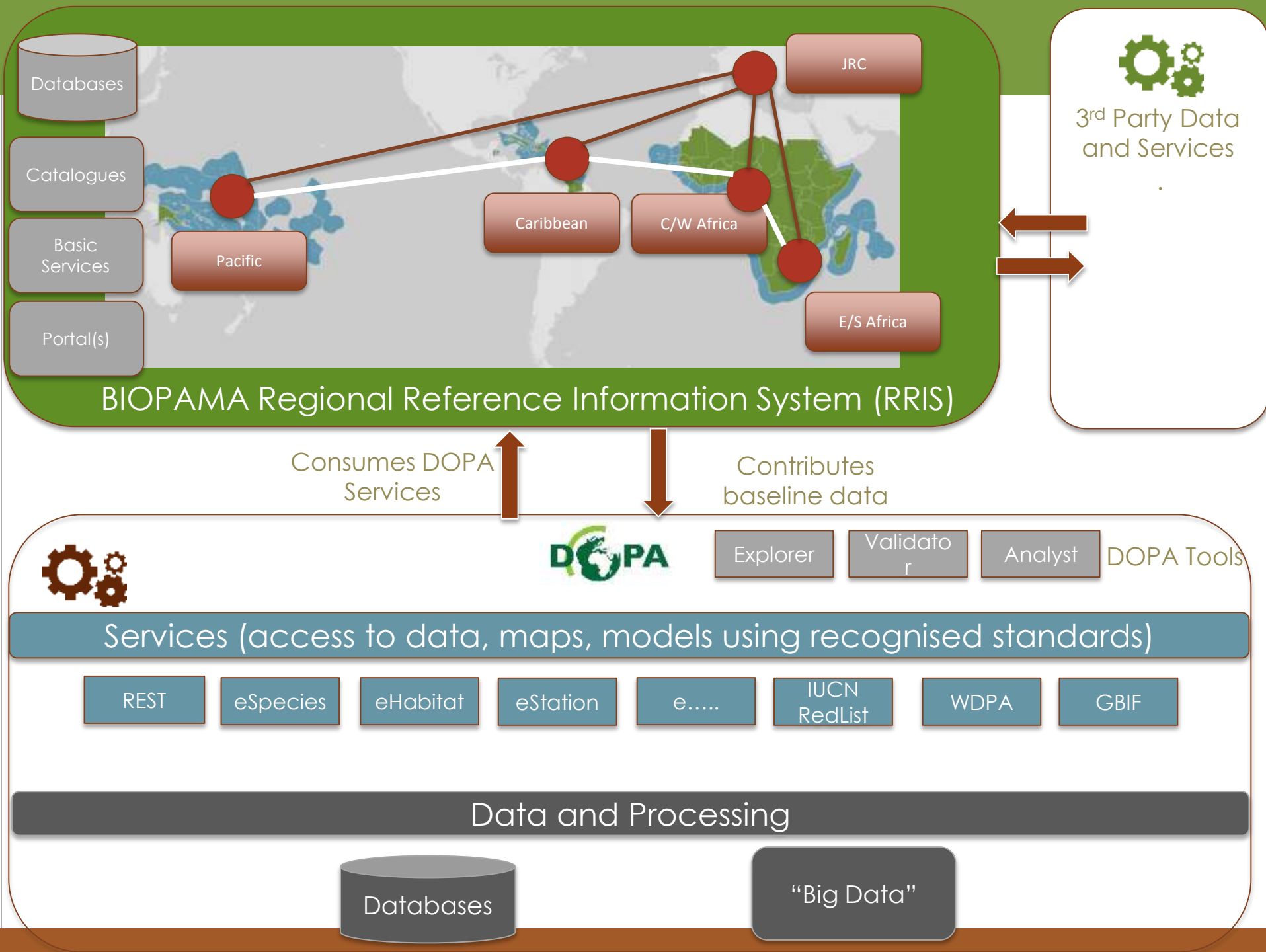
UNEP WCMC



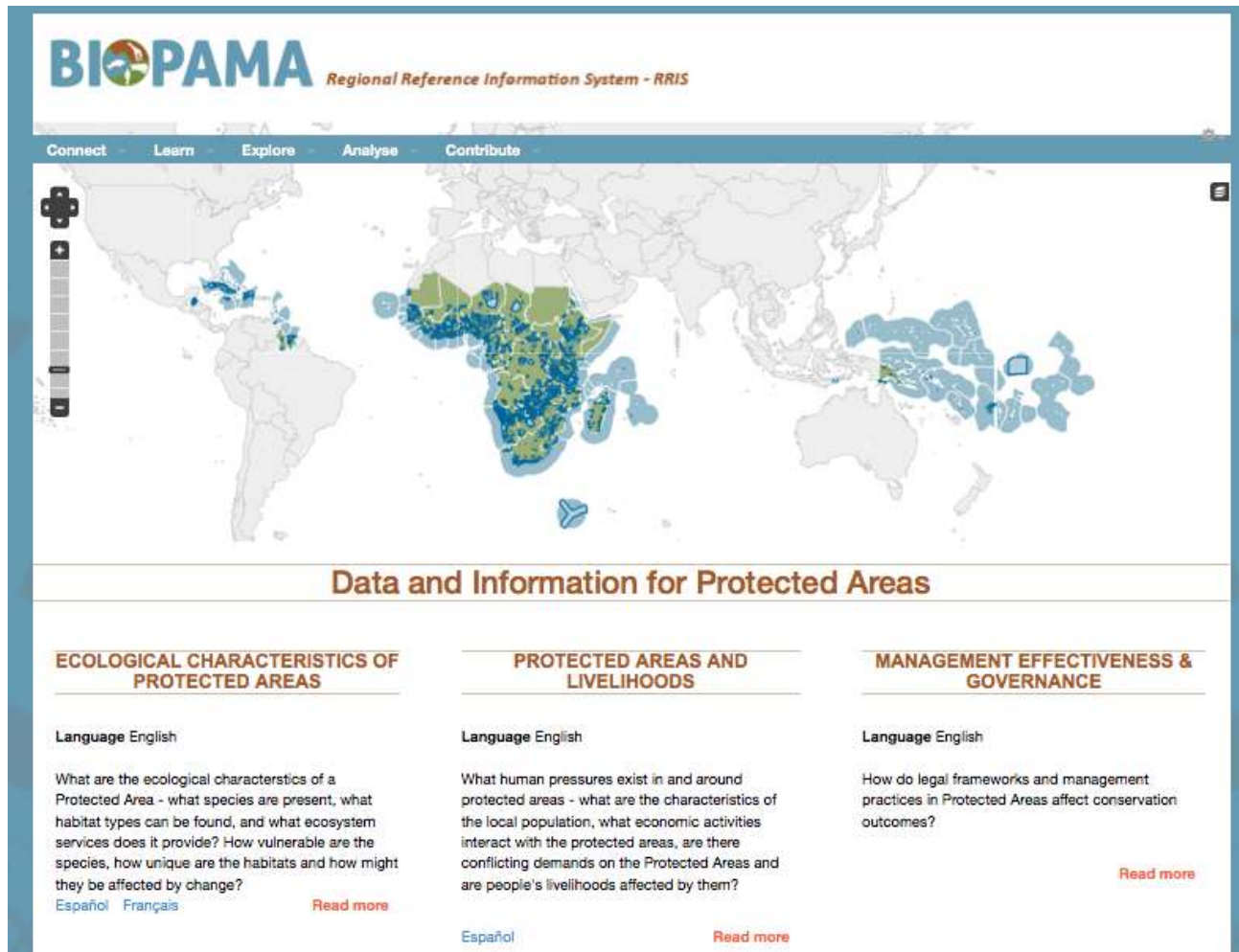
Joint Research Centre • Sito di Ispra

# What the BIOPAMA Project is Building

- Reference Information System
  - Ecological Assessments and Data Collection
  - Socio-economic Assessments and Data Collection
  - Management & Governance Assessments and Data Collection
- Using the DOPA Platform, plus regional, national, local data and services
- Regional Observatories
  - Central and Western Africa
  - Eastern and Southern Africa
- Capacity Building Programme



# BIOPAMA Regional Reference Information System



**BIOPAMA** *Regional Reference Information System - RRIS*

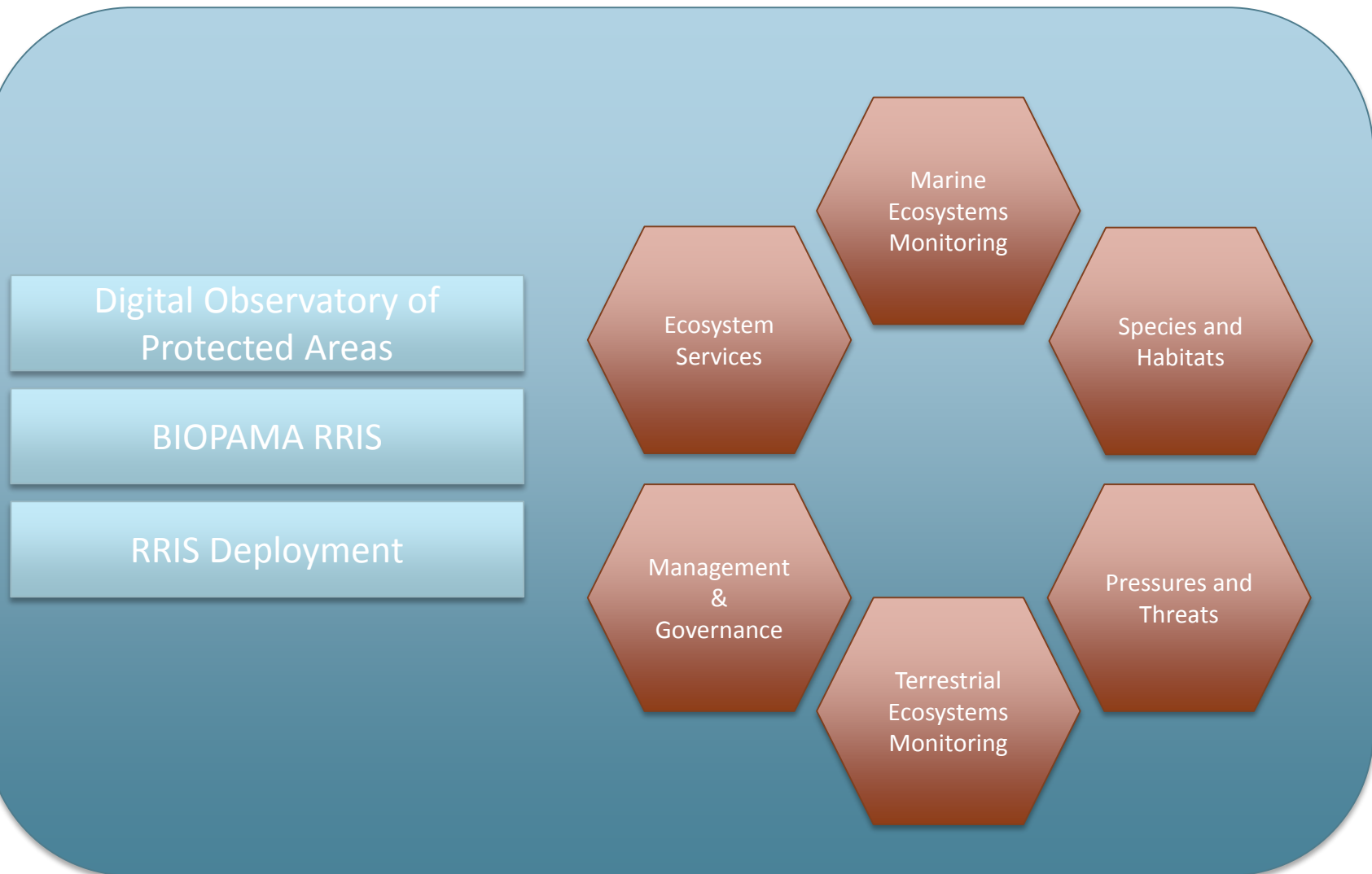
Connect Learn Explore Analyse Contribute

**Data and Information for Protected Areas**

ECOLOGICAL CHARACTERISTICS OF PROTECTED AREAS	PROTECTED AREAS AND LIVELIHOODS	MANAGEMENT EFFECTIVENESS & GOVERNANCE
<p>Language English</p> <p>What are the ecological characteristics of a Protected Area - what species are present, what habitat types can be found, and what ecosystem services does it provide? How vulnerable are the species, how unique are the habitats and how might they be affected by change?</p> <p><a href="#">Español</a> <a href="#">Français</a> <a href="#">Read more</a></p>	<p>Language English</p> <p>What human pressures exist in and around protected areas - what are the characteristics of the local population, what economic activities interact with the protected areas, are there conflicting demands on the Protected Areas and are people's livelihoods affected by them?</p> <p><a href="#">Español</a> <a href="#">Read more</a></p>	<p>Language English</p> <p>How do legal frameworks and management practices in Protected Areas affect conservation outcomes?</p> <p><a href="#">Read more</a></p>

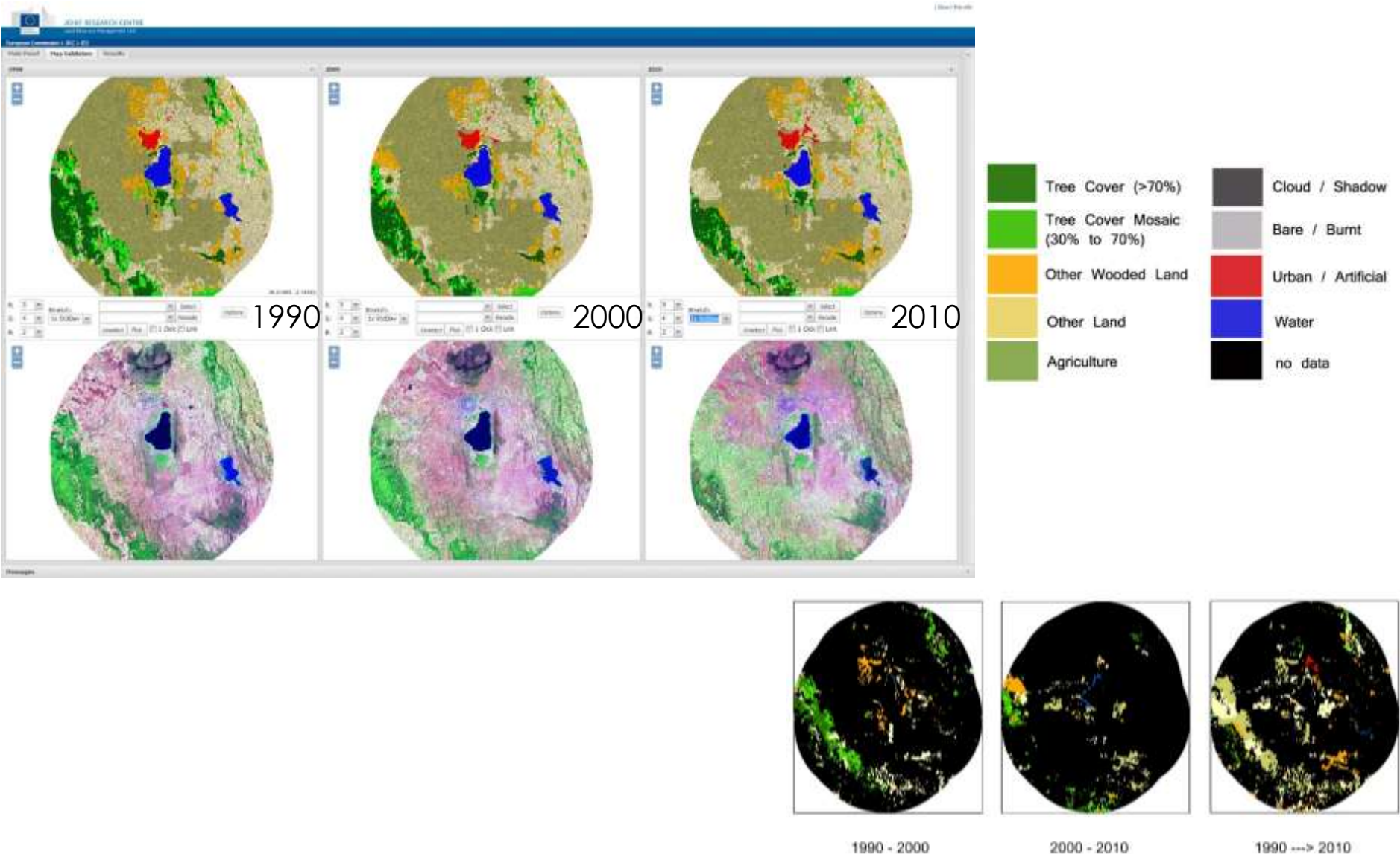
<http://biopama.jrc.ec.europa.eu>

# Key Themes and Organisation





# Protected Area Land Cover Change



BIOPAMA and DOPA providing a solid information base for the Wildlife Strategy

Ambitious PA context assessment underway

A model for building information systems that can be adopted by other actors in the region – web services and data sharing

Expand analysis and reporting from PAs to KLCs

Progress with the regional Observatories, institutional strengthening and developing the RRIS

[biopama@jrc.ec.europa.eu](mailto:biopama@jrc.ec.europa.eu)

<http://biopama.jrc.ec.europa.eu>

<http://dopa.jrc.ec.europa.eu/explorer>