

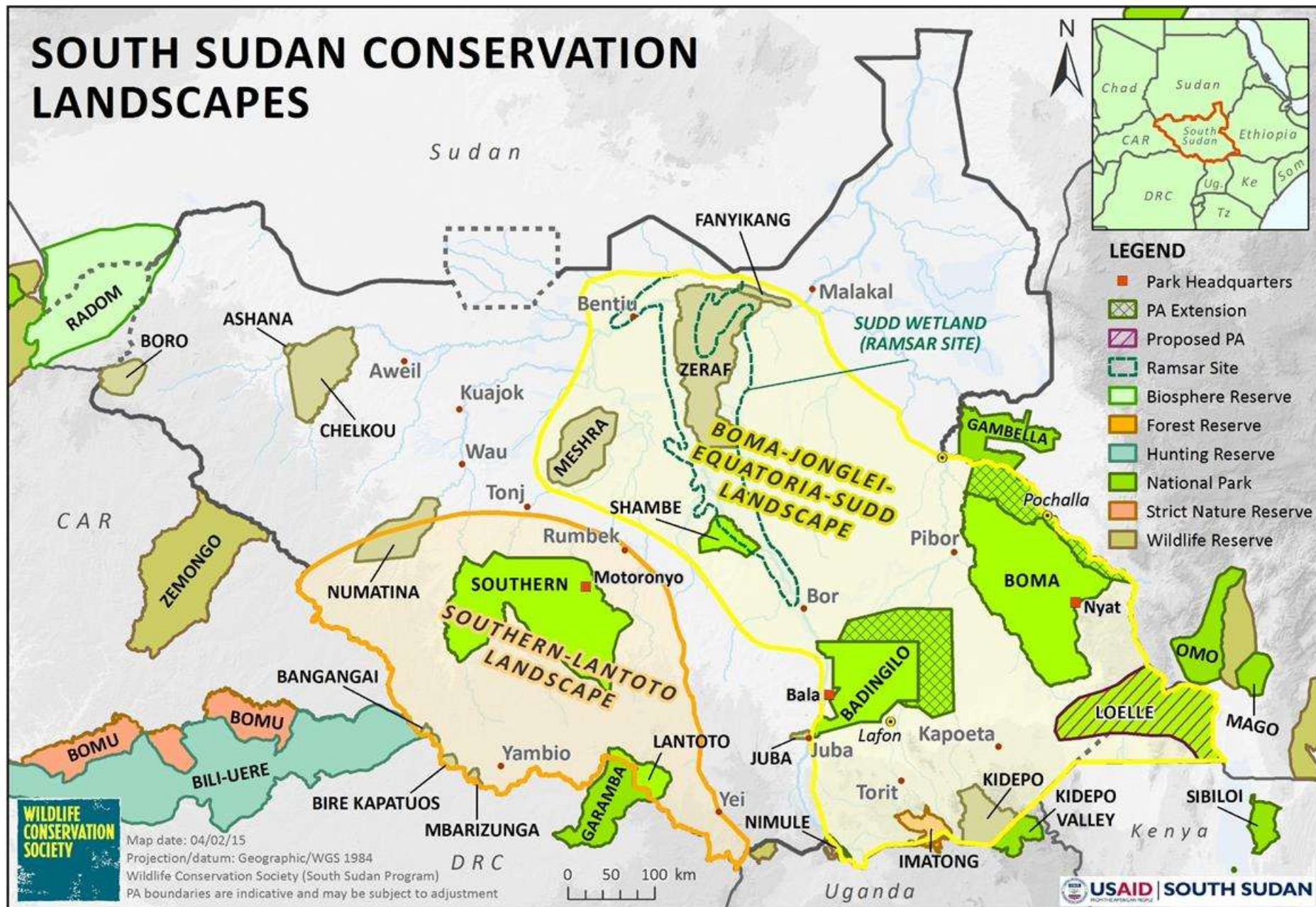
Conservation and Protected Area Management for Building Security and Mitigating Conflict

Approaches for Community Based and Inter-Agency Conservation-Security Partnerships



Paul Elkan WCS
February 10th 2015

SOUTH SUDAN CONSERVATION LANDSCAPES





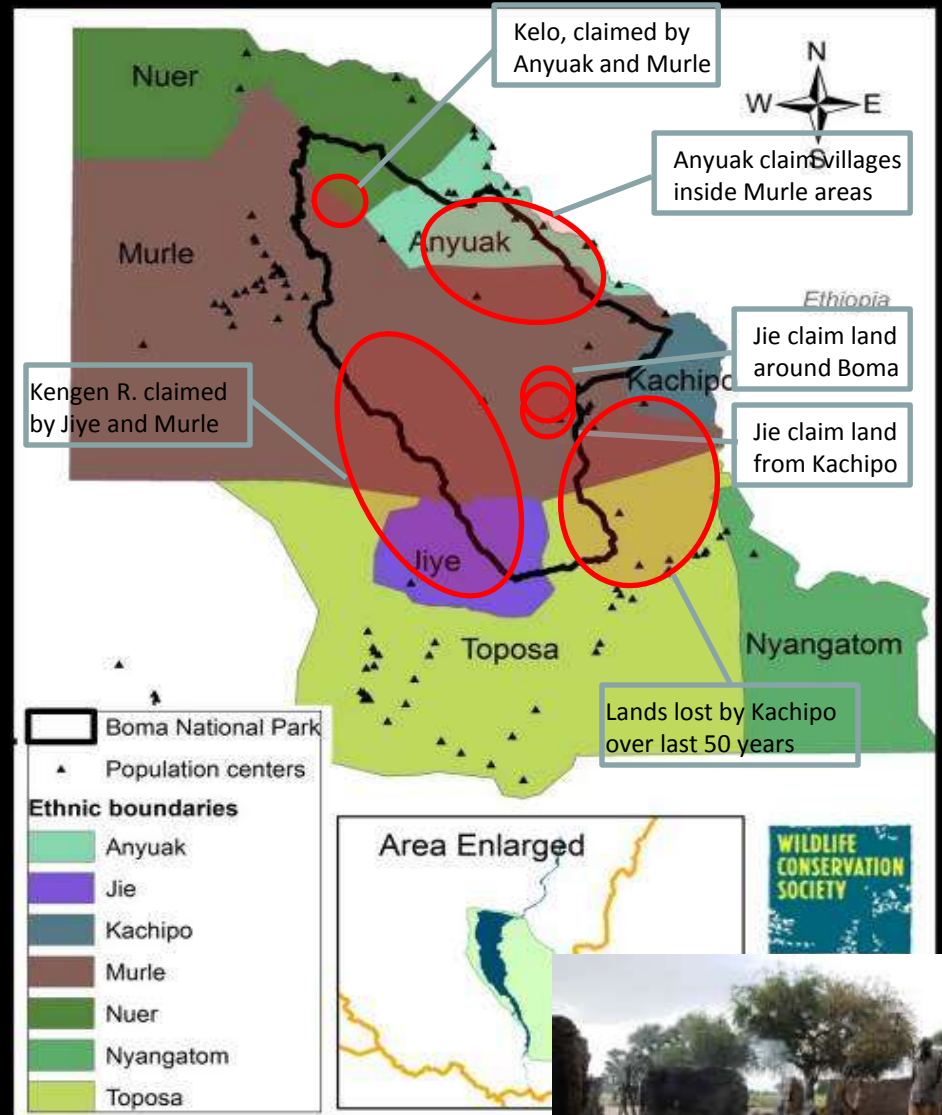
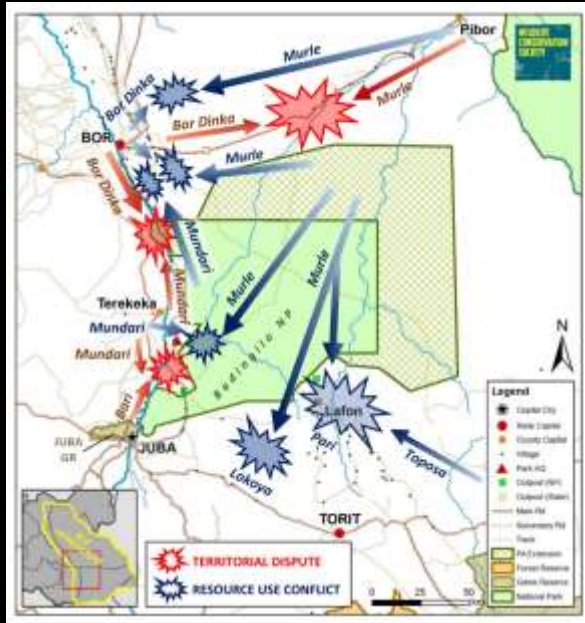
©P Elkan WCS



©P Elkan WCS



©P Elkan WCS



SECURITY

- Rule of law established in remote areas
- Drivers and causes of conflicts mitigated
- Contribute to peace and reconciliation

**Building
stability
& resilience**

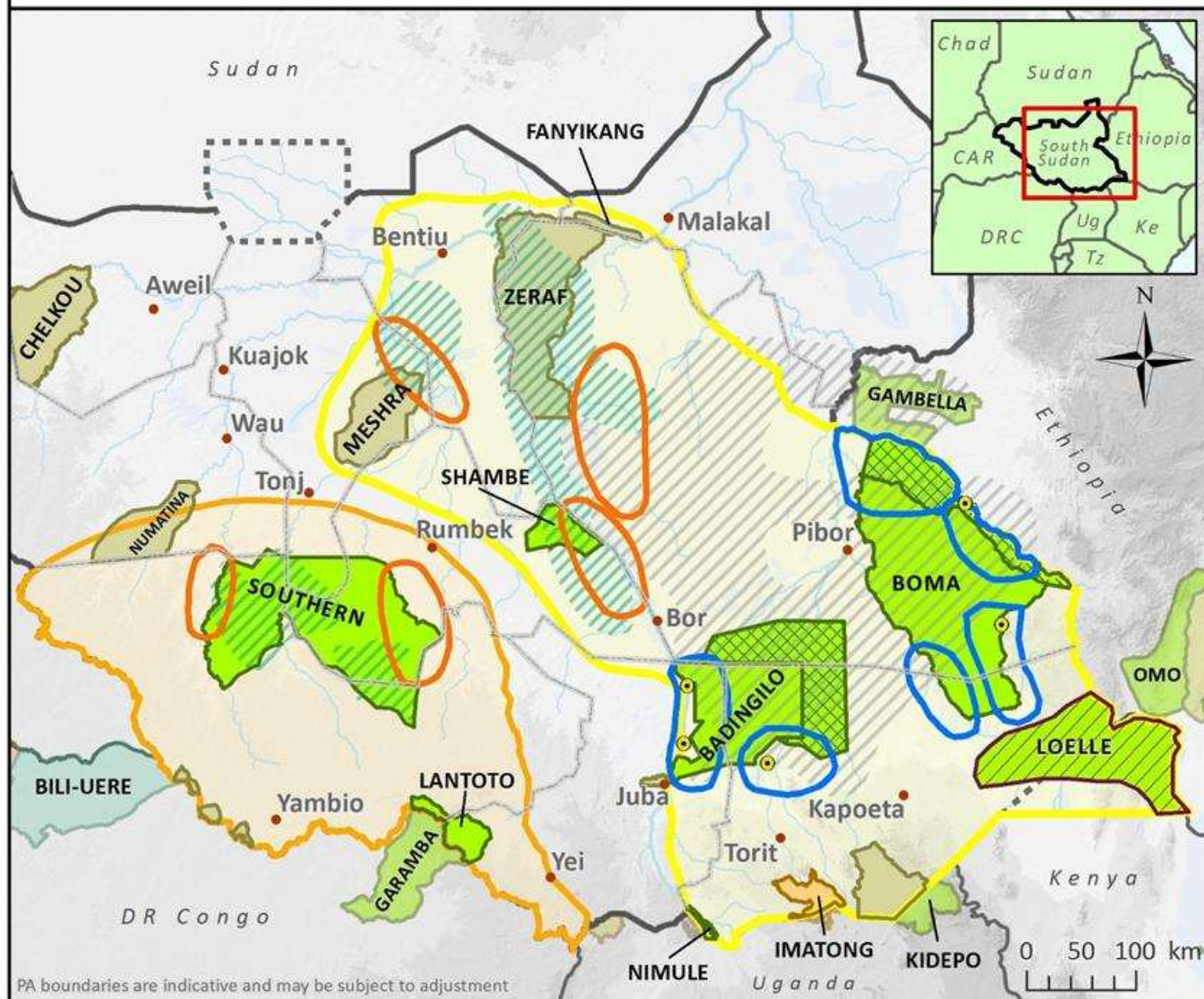
COMMUNITY

- Diversified economic opportunities established in remote areas
- Good governance and effective institutional networks

CONSERVATION

- Land investments and concessions optimized & land conflicts minimized
- Key wildlife and habitat resources protected
- Wildlife trafficking halted

COMMUNITY CONSERVATION SECURITY PARTNERSHIPS



LEGEND

Conservation Landscapes

- Boma-Jonglei-Equatoria-Sudd
- Southern-Lantoto

Community-Security Area

- Existing Partnership
- Proposed Partnership

Protected Areas

- Forest Reserve
- Game Reserve
- National Park
- Proposed PA
- Proposed Extension

Wildlife Zones

- Antelope migration corridor
- Key ungulate zone

Map date: 04/02/15

Projection/datum: Geographic/WGS 1984

Wildlife Conservation Society (South Sudan Program)



USAID

SOUTH SUDAN

PA boundaries are indicative and may be subject to adjustment

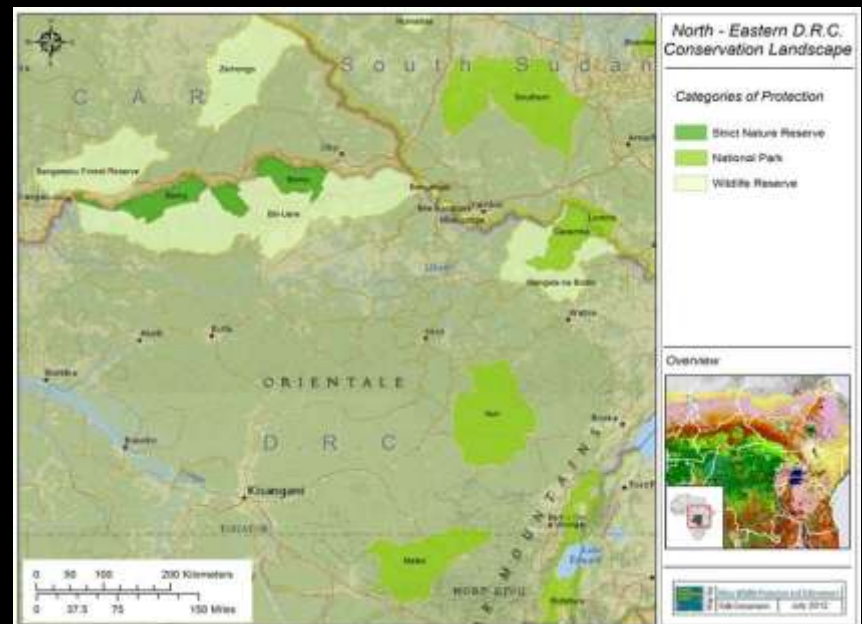
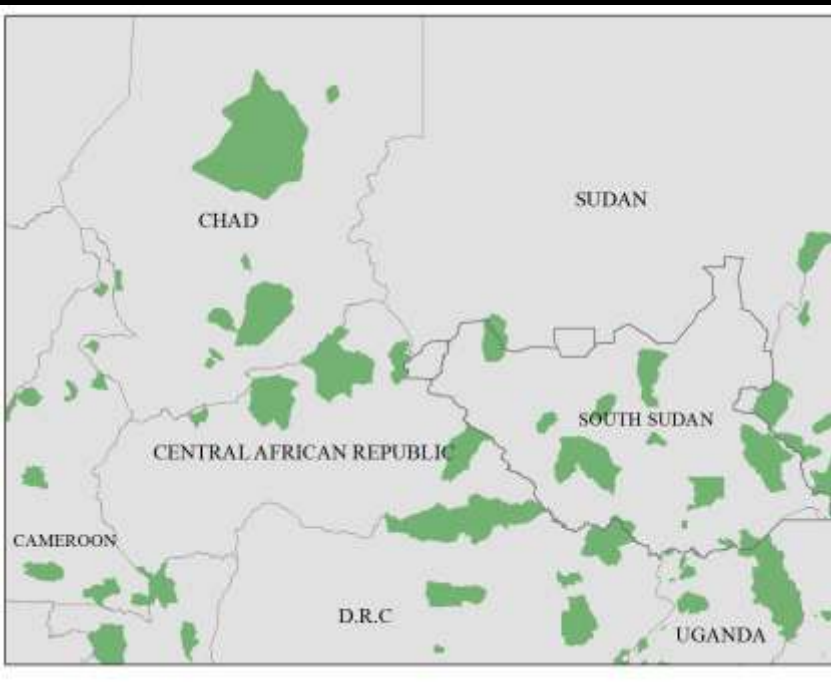


Building institutional networks in conflict-prone regions (NRT model principles)

- Monitoring and responding to human and conservation threats
- Supporting traditional governance structures and interagency law enforcement collaborations

Activities of partnerships include:

- Mapping and understanding security and conflict threats and drivers
- Patrolling conflict zones by joint wildlife, police, and local community members (detect, deter, and address cattle raiders, poachers, insurgency groups)
- Zoning of buffer areas between conflicting ethnic groups
- Information networks for human and wildlife protection
- Strategic placement of social service infrastructure to alleviate dry season competition for resources
- Strategic placement of Park infrastructure and law enforcement efforts for security of local communities & wildlife
- *Engagement with Army and Opposition Forces on Adoption of Wildlife Protection Measures
- *Monitoring Security and Human Rights in Remote Areas



Situation Analysis DRC-CAR-SSudan-(Uganda) Transboundary Areas

- Poaching of key remaining elephant populations (including by some elements of armed forces (SPLA, UPDF, FARDC), LRA, local communities, Sudanese horsemen, transboundary poaching,)
- Transboundary Trafficking of ivory from NE DRC and SE CAR to SSudan to Uganda and onwards
- Garamba-Lantoto elephant poaching
- Chimpanzee trafficking DRC, CAR to SSudan and onwards
- Bushmeat poaching and transboundary trafficking (Billeure, Garamba, Zemongo)
- Sudanese horsemen from Darfur and South Kordofan (poaching CAR, DRC, Cameroon, Chad)
- Trafficking of ivory SSudan to Uganda and onwards
- Nimule-Otze elephant poaching (Ssudan-Uganda)
- Virunga-Queen elephant poaching (DRC-Uganda)



Transboundary Inter-Agency and Community Conservation Security Partnership Development

- ▶ Secure key vulnerable wildlife populations through Protected Area management in eastern DRC-eastern CAR-Southwestern South Sudan (Southern, Billieure, Chinko, Zemongo, including enhancing transboundary PA cooperations eg Garamba-Lantoto)
 - ▶ Take away the “uncontrolled zones” from the bandits, poachers, militias, and bring them under PA wildlife-human security programs.
 - ▶ Keep ivory on the elephants and away from fueling armed groups (eg LRA, local militias, etc.)
 - ▶ Link wildlife protection with protection programs to secure local communities from LRA and other armed group threats (intel sharing, resources, logistics support, communications)
- ▶ Coordinate anti-trafficking operations along borders in the SSudan-DRC-CAR border area (including interagency cooperations- Wildlife, police, customs, military)
- ▶ Complementary anti-trafficking and transboundary elephant security SSudan-Uganda, DRC-Uganda key areas





- ▶ Develop formal inter-agency security-conservation cooperation with military forces DRC-CAR-SSudan-Uganda, USG, UN, AU,wildlife services and conservation partners.
 - ▶ Intel and active operational support in core areas (Garamba-Billieure-Chinko-Zemongo-Southern Park)
 - ▶ Engage with UPDF to transform into positive force for conservation and anti-trafficking in sub-region
 - ▶ Engage foreign military assistance to contribute to stopping poaching by DRC, SSudan, CAR, UPDF armies
 - ▶ Engage on Darfur/South Kordofan horsemen poachers/ traffickers at source and as cross borders-security threat

