

Urban Innovation for Just and Sustainable Cities:
A Global Peer-Learning Series across 2024

Leaving no women* and no one behind in sustainable urban development

24 September 2024

giz Deutsche Gesellschaft
für Internationale
Zusammenarbeit (GIZ) GmbH

On behalf of



Federal Ministry
for Economic Cooperation
and Development

In cooperation with

Cities Alliance
Cities Without Slums

Supported by
UNOPS

Our Partners



Housekeeping Notes

- The meeting is being recorded.
- Please turn off your microphone and camera unless you speak.
- We use **slido** for polls, Q&A, and event evaluation. You can join through the **link** in the chat.
- In case of any technical issues please reach out to:
urban-innovation.giz@mediacompany.com

Agenda

1. Short Welcome
2. Opening
3. Icebreaker
4. Panel Discussion: Leaving no women* and no one behind in sustainable urban development
5. Q+A
6. Evaluation
7. Closing

Opening



Aziza Chaouni
Architect

Ice Breaker

Please go to Slido

You can join via

- the link in the chat
- at Slido.com #Peer_Learning_4
- the QR code



Ice Breaker [Slido.com #Peer_Learning_4](#)

Where are you joining from?

033



Ice Breaker [Slido.com #Peer_Learning_4](#)

What percentage of landowners globally is made up by women?

032

Less than 10%



Less than 20%



Less than 40%



Ice Breaker [Slido.com #Peer_Learning_4](#)

What do you think limits women's and girls' participation in urban development processes?

027



Panel Discussion



Bijal Brahmbhatt

Civil Engineer and Director of
Mahila Housing SEWA Trust,
India



Ikbel Dridi

Urban Planner and Senior
Project Manager at
Cities Alliance (UNOPS),
Tunisia



Sri Husnaini Sofjan

Senior Program
Administrator & Strategist
at Huairou Commission,
Malaysia

Panel Discussion



Bijal Brahmbhatt

Civil Engineer and Director of
Mahila Housing SEWA Trust,
India



Mahila Housing Trust (MHT)



OUR VISION

Women shaping responsible urban development.



OUR MISSION

Strengthening collectives of grassroots women in the informal sector to advance constructive dialogue and action on improving their housing, living and working environments in cities.



OUR THEORY OF CHANGE

If the grassroots collectives of women are provided with the requisite knowledge, technology and skills to identify and assess development issues, they will be able to constructively engage with governance and planning processes to lead transformation in their own communities. They will further come together as a peer group of informed and articulate citizens to participate in shaping urban development.

Our interventions are structural in nature. We take an incremental and phased approach to sustain these.

1



Establishing credibility in the community

Invest in individuals/collectives through a particular initiative. Promote Community based organizations, build capacities of leaders to affect change.

2



Demystify government schemes and complex urban planning procedures

Demystify government schemes and programs for poor women, empower women leaders with knowledge to negotiate planning and service delivery processes.

3



Direct public (and sometimes private) funds

Channelize funds in a significant measure into a given area. encouraging communities to invest in improving their habitat making them resilient.

4

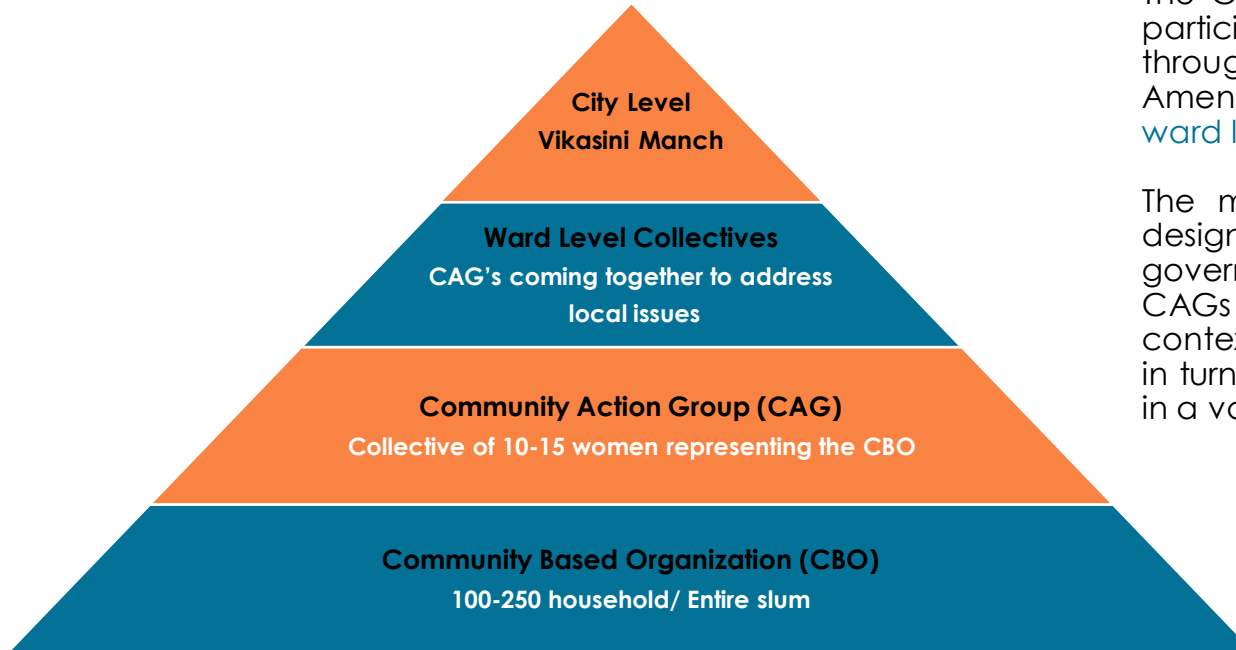


Expand its foot-print across sectors related to habitat

Build on its credibility and ability to deliver results, expand across the 'share of people's day to day' pain through multiple initiatives

Our process

MHT invests in developing 'grassroots institutions' to ensure sustained progress beyond MHT's engagement



The Government of India mandates participatory local governance through the 74th Constitutional Amendment Act [at the city and ward level](#).

The model of institution building is designed to align with local governance structure. It allows the CAGs to relate their own work in context of more broader issues. This in turn, can allow women to mobilize in a variety of ways.

CAGs are driving widespread impact by identifying and addressing demand of communities

➤ **SENSITIZING & MOBILIZING COMMUNITIES FOR ACTION**

Conducting regular area meetings, facilitating dialogue, record keeping

➤ **SURVEYS AND NEEDS ASSESSMENTS**

Collecting large scale spatial data (household and community level), identifying needs of settlements

➤ **IDENTITY & ENTITLEMENTS**

Assistance in getting documents such as Aadhar Card, Pan Card, Ration Card, etc. and benefits from social security schemes like Widow Pension Scheme, Free Ration under PDS, Mukhyamantri Amrutum Yojana, etc.

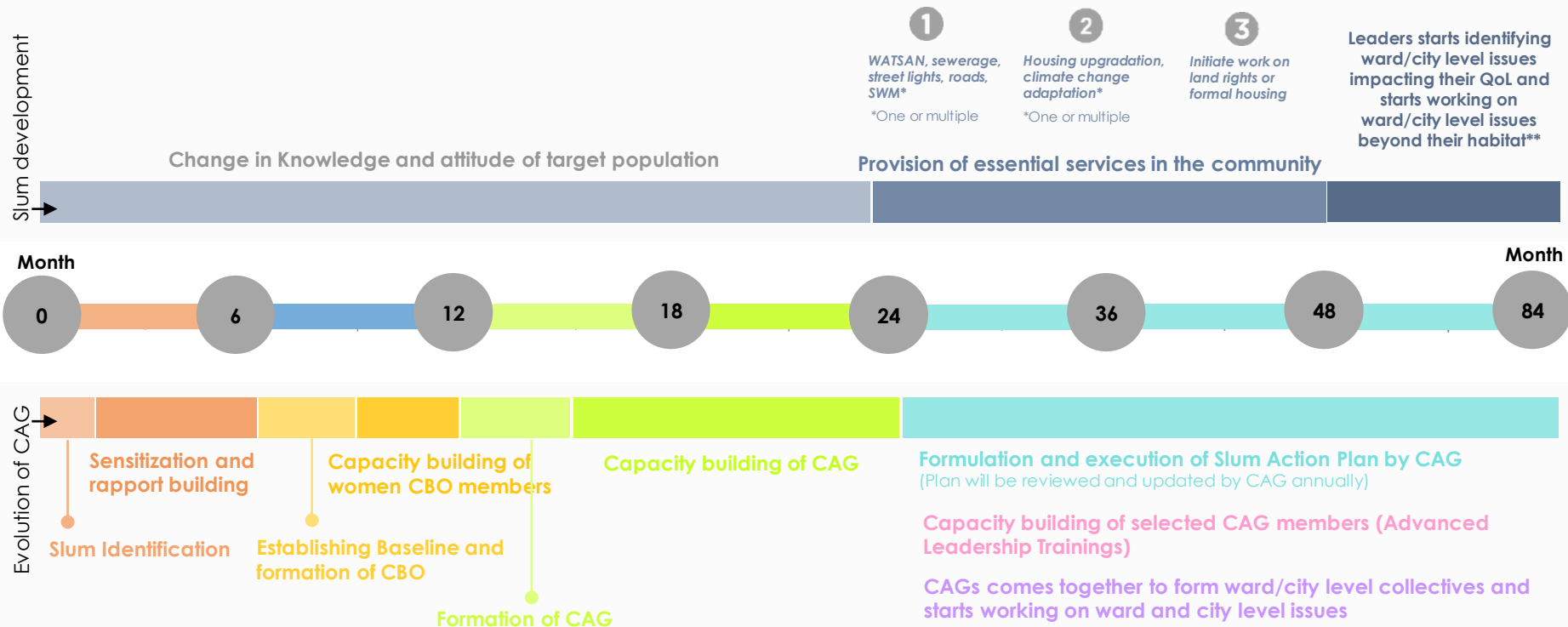
➤ **LIAISING & PARTNERING WITH GOVTS. FOR COMMUNITY IMPROVEMENTS**

Write applications, collect required documents/ community contribution, follow-ups with government for services

➤ **ENGAGING IN ADVOCACY ON HABITAT ISSUES AT WARD AND CITY LEVEL**

Mobilize funds from councilors for initiatives such as tree plantations, Influence budgets and plans

MODULE 1	MODULE 2	MODULE 3	MODULE 4	MODULE 5	MODULE 6
Orientation to MHT and its services	Material introduction	Importance of collective action and process of CBO/CAG formation	Map sharing, Public participation	Structure and functioning of urban local bodies (ULB)	Maintenance of facilities
MODULE 7	MODULE 8	MODULE 9.1	MODULE 9.2	MODULE 9.3	MODULE 9.4
Basic Climate Change Training	Slum Action Plan Training	Leadership	Understanding Gender	Urban Governance and Budgeting	Urban Planning and Development Processes
MODULE 9.5	MODULE 9.6	MODULE 9.7	MODULE 10 MODULE 10	Key: CBO/CAG Trainings Slum Action Plan Training Advanced Leadership Trainings Adoption of Digital Technologies	
Communication	Negotiation and Advocacy	Legal Training (Awareness on Law/Regulations)	Adoption of Digital Technologies		



Note:

The timeline illustrated here is an average timeline.

The level of service augmentation illustrated here is in a linear manner. However, in practice, it may vary based on government will and policies. This timeline may vary based on an organization's expertise and experience.

*****As per the need of the community, Capacity of CAG, Government policies

**Issues such as Transport and Mobility, Monsoon/Heat Action Plan, Suggestions on Town Planning Schemes, Provision of social infrastructure like aanganwadis, etc.

CAGs are driving widespread impact by identifying and addressing demand of communities



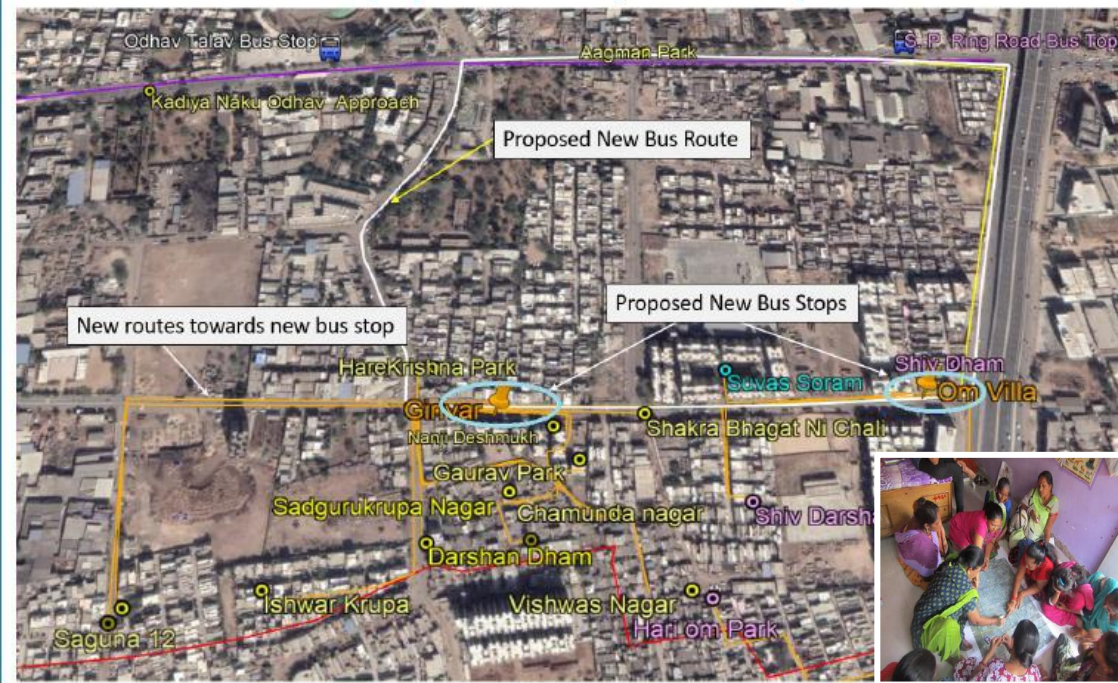
Acquiring water line in South Sarkhej, A'bad

CAGs of three societies in Sarkhej: Ayesha Park, Lucky Park and Shabnam Park came together to advocate for a new water line and legal connections.

They submitted their demand with data and maps to AMC and also convinced the ward councilor to dedicate a budget of INR 8 Lakh towards this project.

CAGs are driving widespread impact by identifying and addressing demand of communities

New proposed route map with bus stop



Extending Bus Service in Odhav, Ahmedabad

9 CAGs created by MHT in Odhav ward came together to collectively address the pressing issue of lack of accessible and safe public transport.

CAG's got the endorsement of 17 societies, challis, slums representing 25,000 people.

CAGs used geospatial data and surveys to build evidence for their demand to extend bus service.



MHT was able to deliver COVID response at scale because of the strength of the CAG network across 11 cities.



CAGs led emergency Relief during COVID-19 Pandemic









- Across cities, CAGs were at the frontlines.
- 1.3 million individual reached through COVID awareness.
- 15 million meals and ration kits provided across 10 cities.
- INR 14 million. mobilized through Government subsidies.

MHT has delivered tangible improvements in cities 'at scale' with CAGs at the forefront- till March-2024

Outreach	 1,241 Slum Settlements served	 5,38,297 Households reached	 44,69,145 Individual served
CAG formation and membership	 778 CAG formed	 72,146 Women trained	 17,512 Women Community Action Group leaders
Government partnership	 18 Policy Intervention	 27 Public amenities improved	 \$47.86 Mn Worth of public resources accessed for poor women
	 3,15,87,224 Sphere of influence (Population covered)	 8 Cities Councilors trained	
Habitat	 2,74,911 (13,74,555 Individuals) Households accessing water/ water management	 69,675 (3,48,375 Ind.) Households accessing toilets and sanitation	 56,425 (2,82,125 Ind.) Formal houses / land rights for women
	 10,206 Housing loans	 \$1.69Mn Amount saved by credit co-op members	 6,46,015 Households surveyed and listed

Impact and Outcome of MHT's work on energy and climate change till March-2024

Energy and Climate change

	82,161 , (4,10,805 Ind.) Households adopted energy and climate resilient products		2554 Renewable energy products installed		33.93 Tonnes carbon emission reduced (yearly)
	36,457.5 Tonnes Carbon sequestered		15,02,165 Trees planted		7 Climate action plans designed and implemented (heat, flooding, urban forestry, water management)
	1,25,74,000 Catchment area of action plan		16,256 Women trained as climate resilient specialists		

Panel Discussion



Ikbel Dridi

Urban Planner and Senior
Project Manager at
Cities Alliance (UNOPS),
Tunisia

An illustration of a diverse group of women of various ethnicities and ages, wearing different types of head coverings like hijabs and headwraps. They are standing in front of a stylized city skyline with various skyscrapers. The entire illustration is in shades of blue.

AN INCLUSIVE APPROACH TO PUBLIC SPACES

FEMMEDINA PROJECT



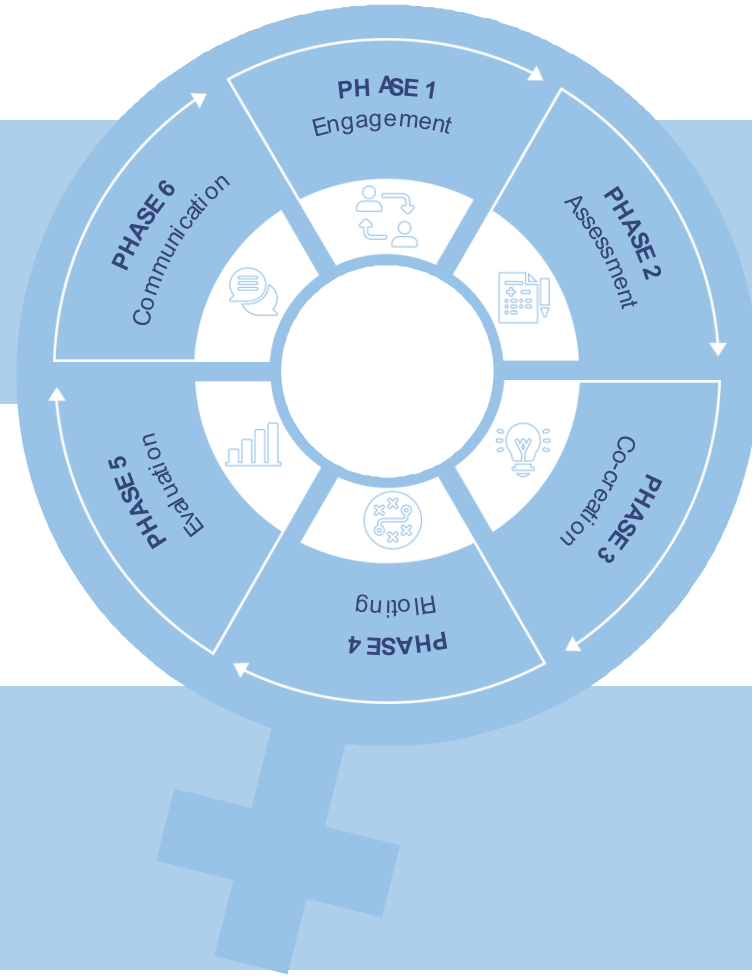


CITIES FOR WOMEN

are cities where there is **equal access to the resources and opportunities** that the city can offer, regardless of any **gender identity**, any protected characteristic such as **race, class and physical ability**.



URBAN ASSESSMENT FRAMEWORK THROUGH A GENDER LENS



Engagement and Assessment: After an initial engagement to gather local stakeholders, different tools are applied to collectively assess the level of women's engagement in the city. Sex-disaggregated data are collected through participatory processes designed to target women residents, especially from disadvantaged neighbourhoods.

Co-creation and piloting: To generate innovative and context-based solutions, communities and women are engaged to define policy responses and to design interventions to respond to identified challenges. Subsequently, the ideas and solutions are tested through pilot projects.

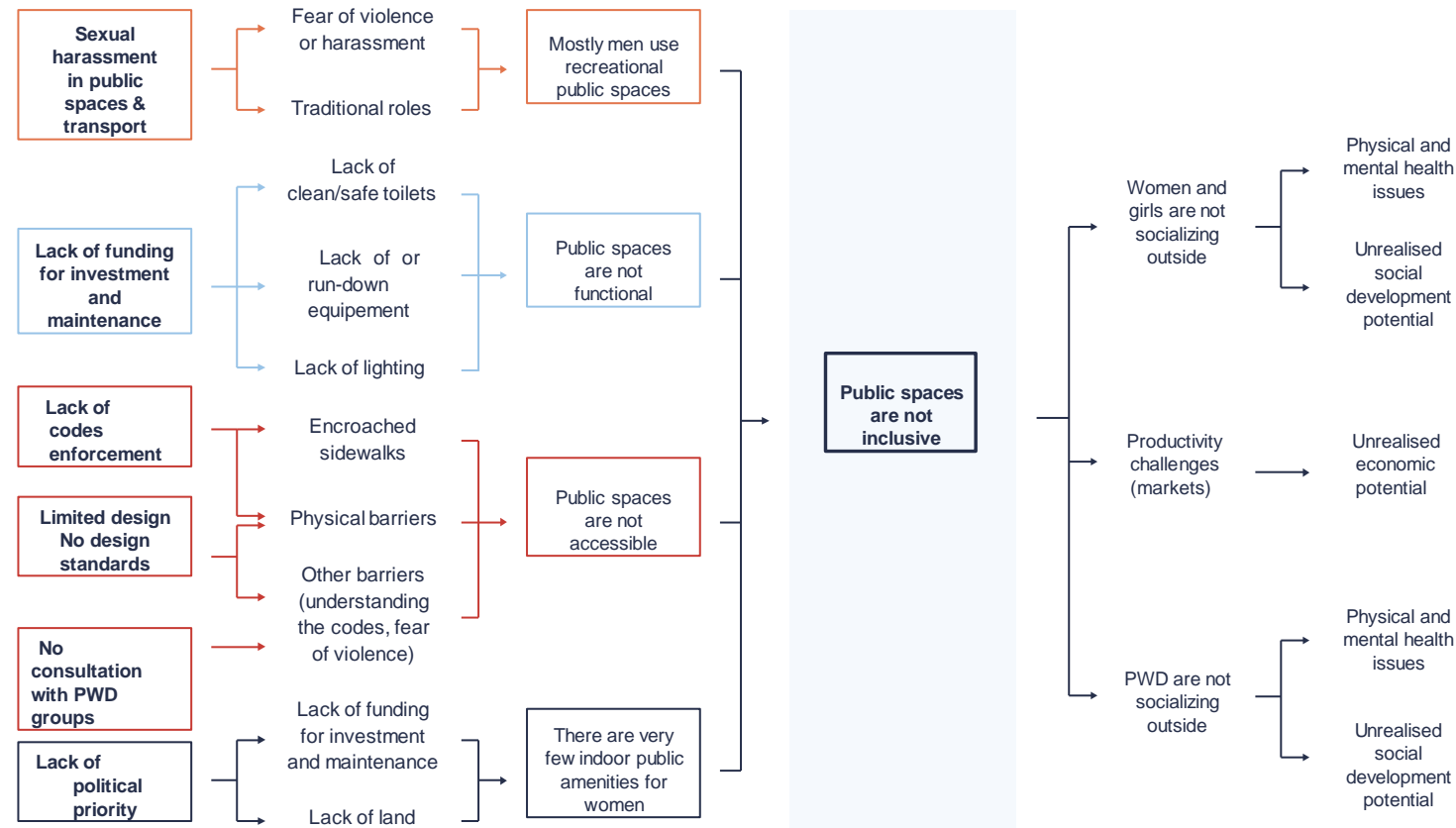
Evaluation and communication: The following phase involves assessing the impact of pilot projects and sharing impact data to inform city and national policies. Finally, data and results are used to advocate globally for a gender-sensitive approach to urban development.

WHEN GENDER IS IGNORED IN PUBLIC SPACES

THE CHANGE WE WANT TO

SEE

inclusive public spaces where women, youth, the elderly and people with disabilities **can create meaningful connection, feel safe and develop their skills and leadership**



Cities Alliance

Cities Without Slums

United by
UNOPS

HOW TO CO-CREATE AND FINANCE INCLUSIVE PUBLIC SPACES?

Cities Alliance

Cities Without Slums

Hosted by
UNOPS



Femmedina – *Inclusive Urban Planning*



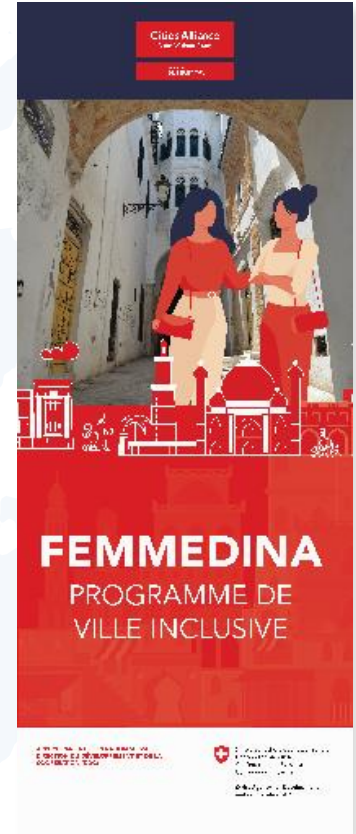
Participatory assessment of women's needs and priorities in public spaces in the Medina and co-creation of short term and medium term interventions in public spaces



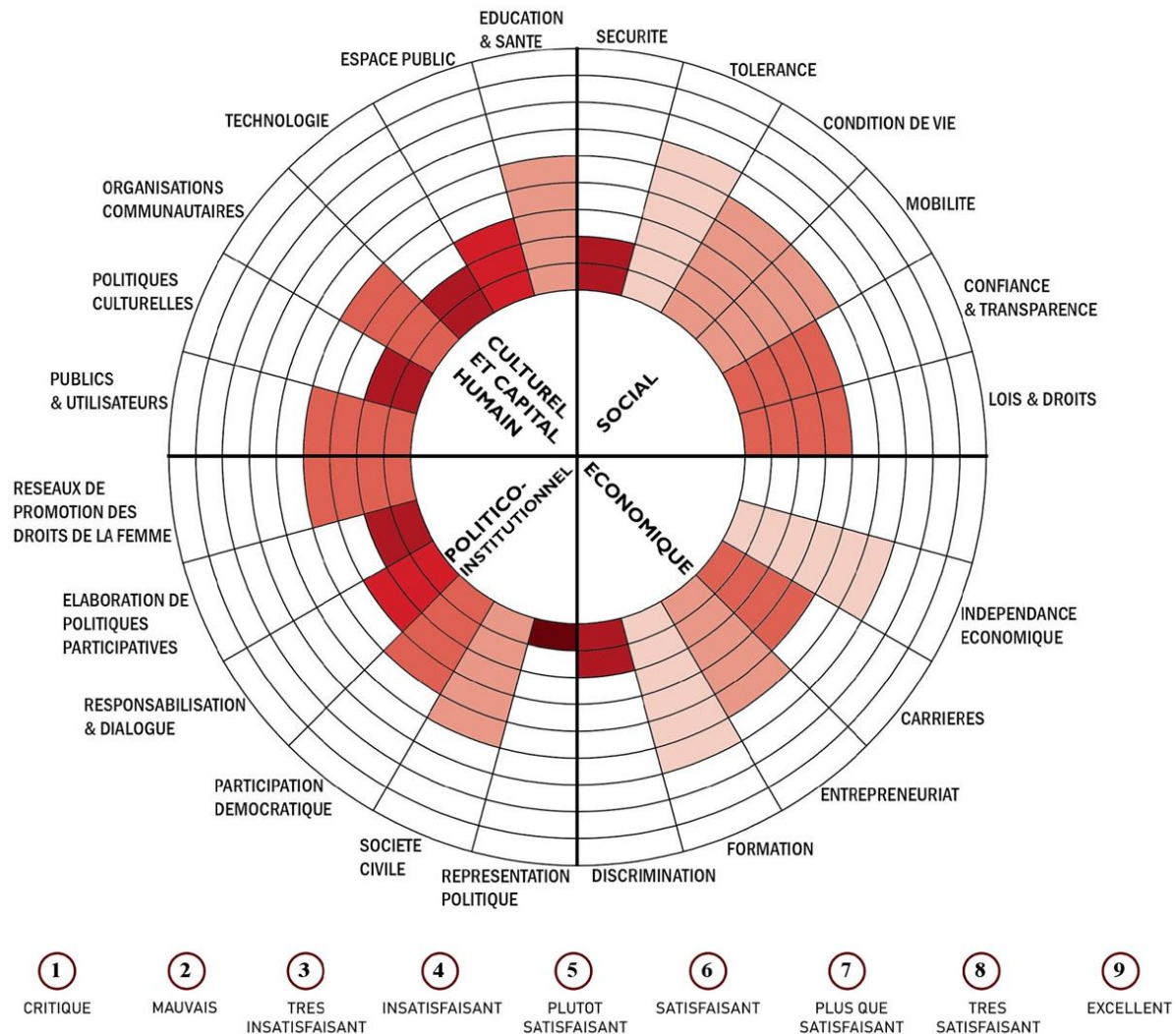
Implementation of pilot **interventions** in public spaces that enhance women's participation in the Medina



Support cities in leverage public and private funding for medium-size inclusive infrastructures



SOUSSE PROFILE





ANALYSIS
WORKSHOP



Cities Alliance
Cities Without Slums

Hosted by
UNOPS



SAFETY
WALK

COLLECTING SEX- DISAGGREGATED DATA IN A PARTICIPATORY WAY



GENDER-BASED COMMUNITY MAPPING

Supports understanding how women use urban spaces and how gender influences this usage.



WOMEN SAFETY AUDIT

Participatory 5-step approach of assessing the physical environment in terms of their safety for women.

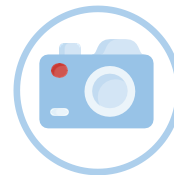


PHOTO WALK

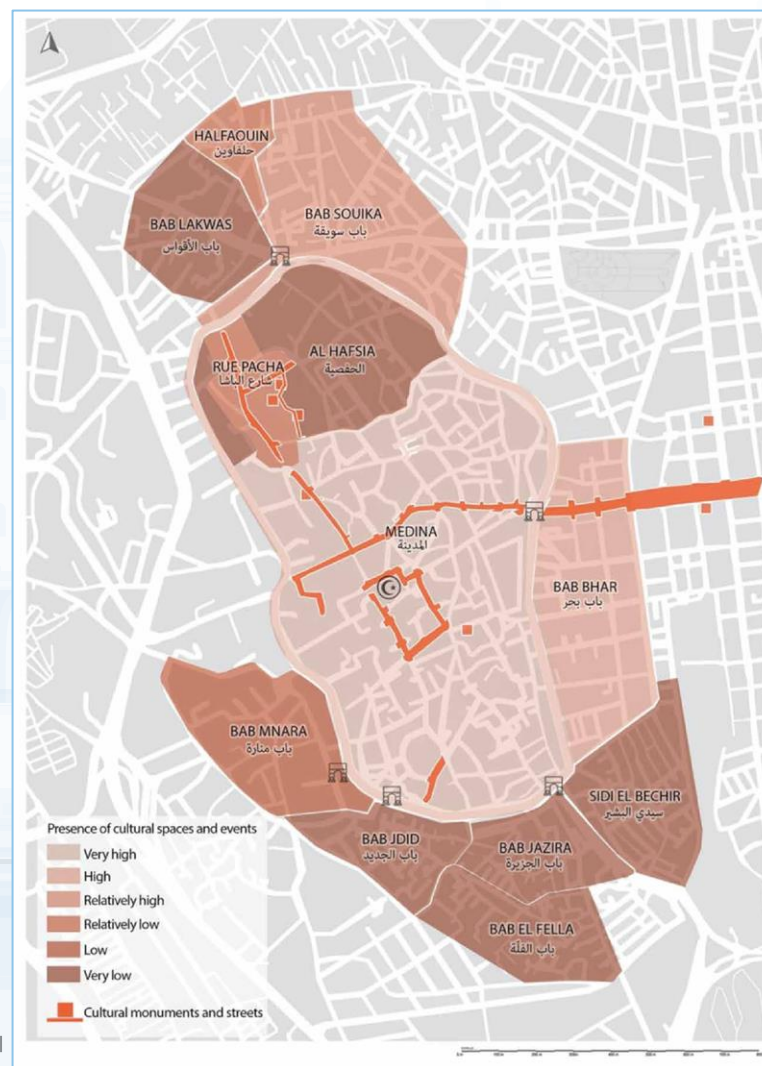
Collection of pictures and joint discussion of emerging themes to increase understanding how women see their city.



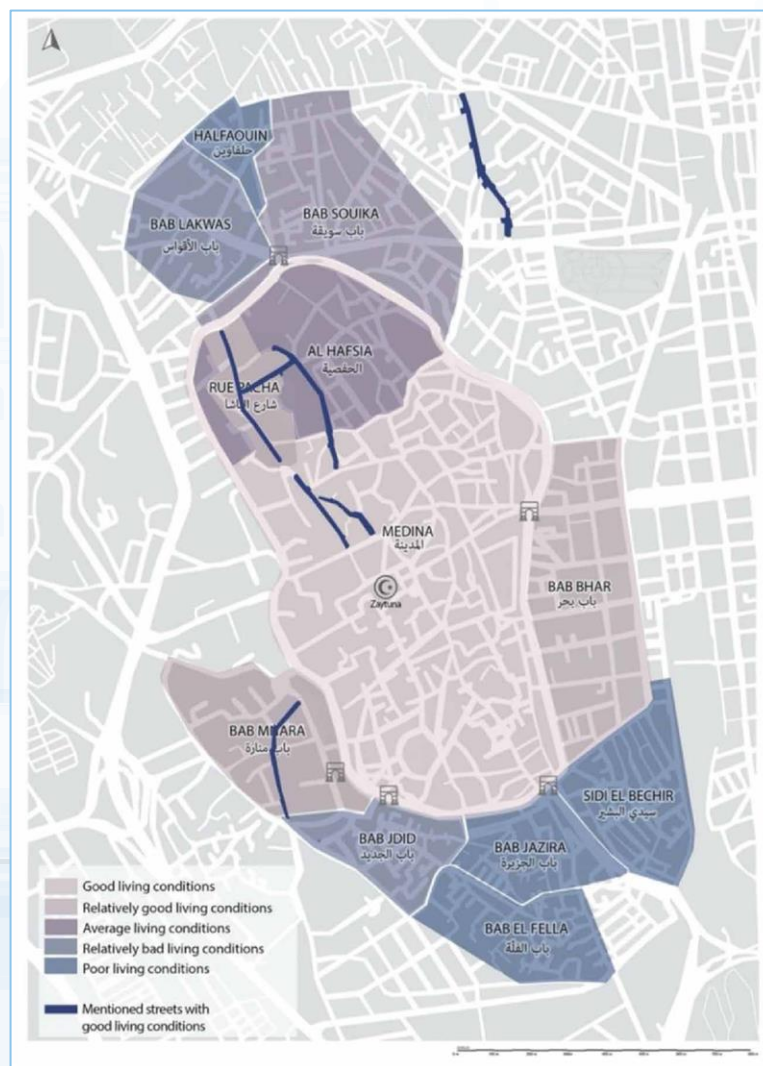
DAILY ITINERARY MAP

Evaluation of women's daily tasks and identification of (un)favourable characteristics of the area where activities are carried out.





Medina Cultural,
religious and
entertainment map



Medina Living conditions map

The Hive

BEFORE



AFTER

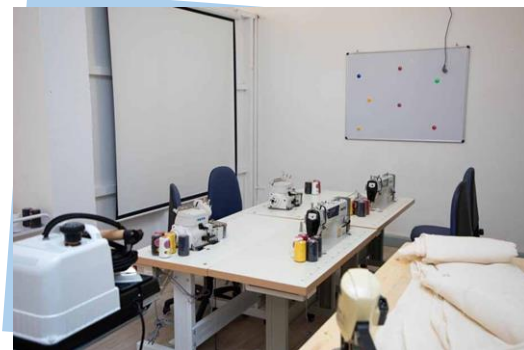


Learning Hub

BEFORE



AFTER



Park

BEFORE



AFTER



CULTURAL HERITAGE TRAIL

The contribution of women to life in the Medina up to today



Ancienne entrée de l'hôpital. © Aziza Othman



Tunis Medina. © Stephen Downes



Tunis Medina, Courtyard. © Dar Othman



Women in the Medina's history and culture

- 1 Princess Atti, founder of the Al Haoua Mosque
- 2 Aziza Othmana, the Medina's first social reformer
- 3 Lalla Kalthoum, the fierce princess
- 4 Sayyida Aajoula, the Sufi Saint
- 5 Women in the chachia trade
- 6 Bab Bnet
- 7 Souk el Nisa



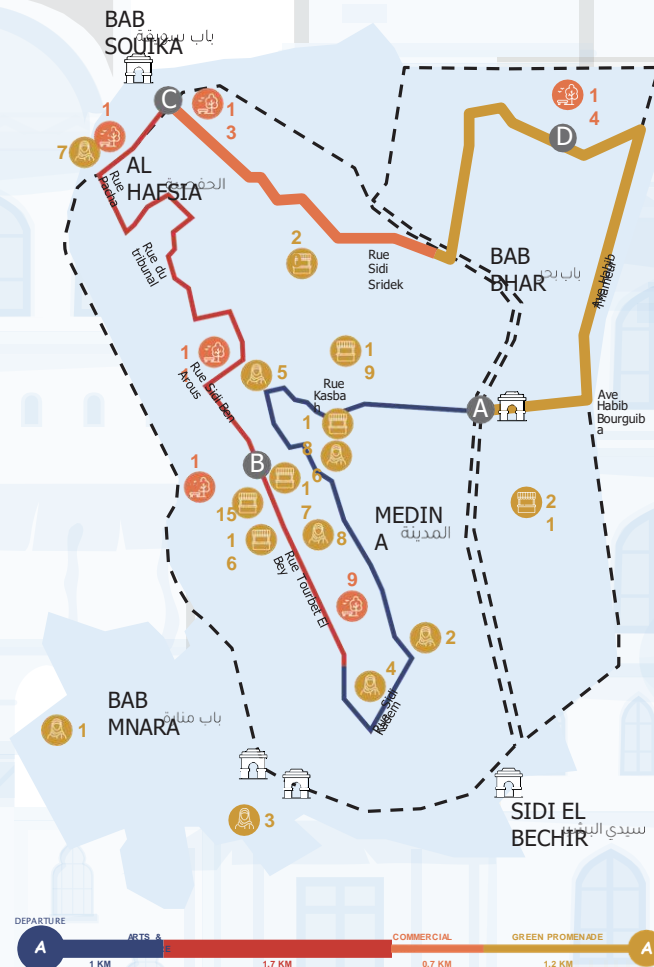
Women Friendly Spaces

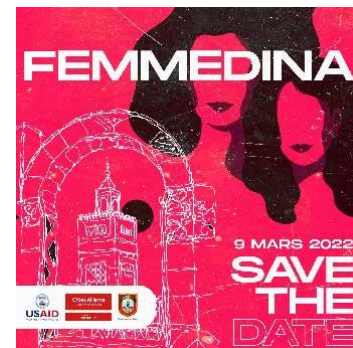
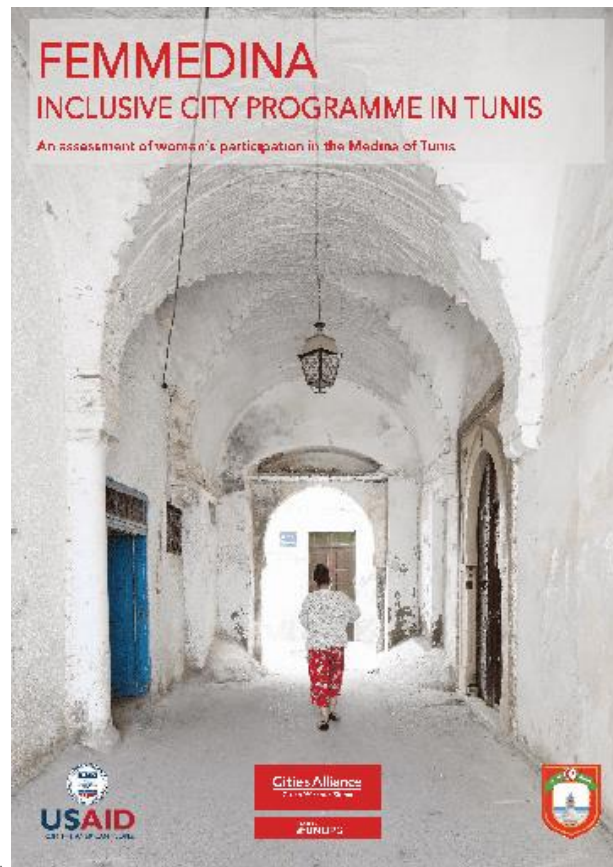
- 9 Hidden Park
- 10 Place du Gouvernement
- 11 "The Hive": Work Hub for Women
- 12 "The Co-hive": Women and Student Park
- 13 "The Hub": Cultural and Green Escape: Parc de Passage HabibThameur



Souk

- 15 Souk El Shaweshin
- 16 Souk El Berka Attarine
- 18 Souk Turc
- 19 Souk El Grana
- 20 Bab el Bhar Market
- 21 Bab el Bhar Market





SAVE THE DATE

Quand les femmes transforment les villes

01 JUIN '22
14 JUIN '22
Invitation Fergat à Tunis
18h-22h Aurélie de la Roche
LRT 1000

Quand les femmes transforment les villes est une exposition qui raconte les histoires et les réalités des femmes dans les villes tunisiennes. Qu'il s'agisse de la sécurité publique, des opportunités économiques ou de la participation culturelle, les espaces urbains discriminent les femmes de manière disproportionnée.

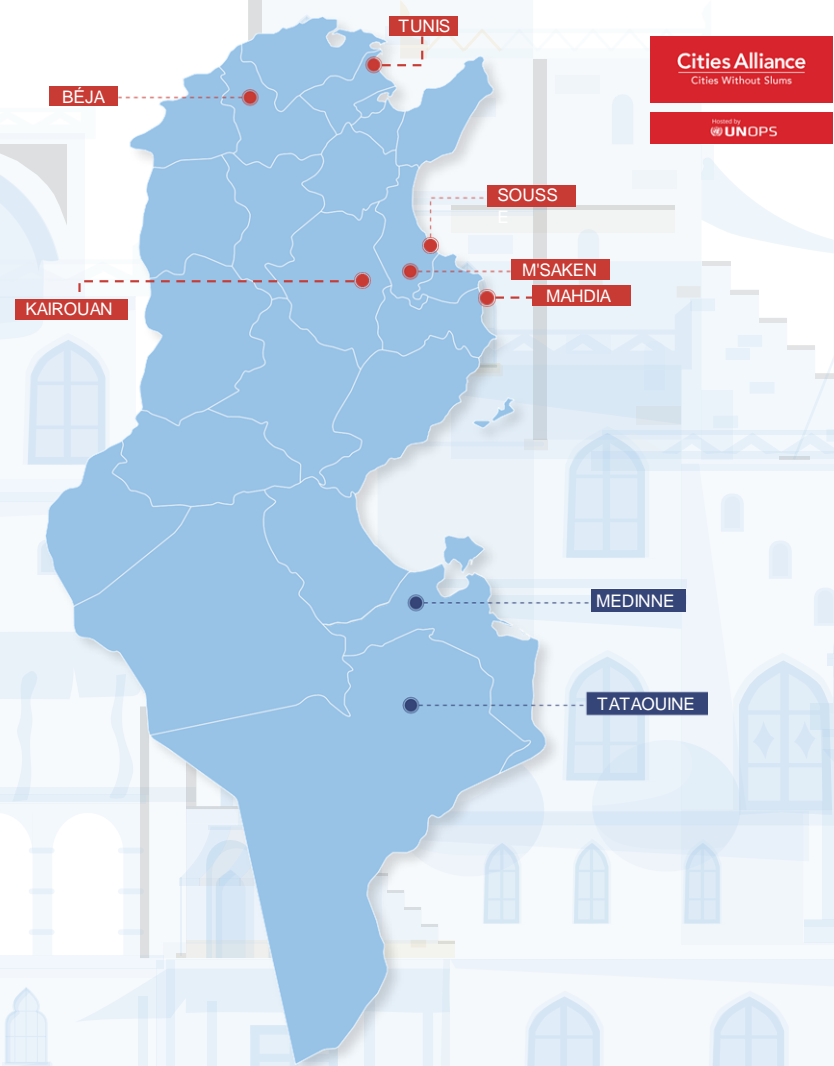
Cette exposition montre que les villes, développées et conçues par et avec les femmes, sont des villes inclusives où les femmes peuvent poursuivre leurs rêves et pratiquer leurs droits en tant que citoyennes égales.

Participez à notre événement en ligne et en personne qui présentera le travail des Cities Alliance en faveur de l'égalité des genres en Tunisie.

DOSSIER DE PRESSE
01 JUIN 2022
18:00 HRS
TOUT PUBLIC



Scaling-Up femmedina
approach to co-design and create
women-led and inclusive public
spaces in Tunisian Cities



SUPPORT LAS TO ACCESS FINANCE FOR URBAN PROJECTS IN TUNISIA

Cities Alliance
Cities Without Slums

Hosted by
UNOPS

In Tunisia CA supported Municipalities to access finance for medium-size infrastructure projects by

1. co-creating ,medium-sized infrastructure project (market places, energy projects, green infrastructures) integrating **gender and climate considerations** (femmedina approach),
2. developing pre-feasibility studies and technical design,
3. identify and apply for funding opportunities at national and international levels





Panel Discussion



Sri Husnaini Sofjan

Senior Program
Administrator & Strategist
at Huairou Commission,
Malaysia

**GIZ & Cities Alliance
Webinar Series**

**Leaving No Women*
&
No One Behind In Sustainable Urban Development**

Tuesday, 24 September 2024



HUAIROU COMMISSION
Women, Homes & Community

Focus of Presentation

- **Women's Critical Role In Urban Development As Leaders And Agents Of Change.**
- **Share TOOLS and STRATEGIES used to create partnerships for inclusion of women, especially those from marginalized, poor communities, in governmental procedures, and effectively position them as leaders in urban development processes**



HUAIROU COMMISSION
Women, Homes & Community

Understanding key points for positioning women in urban development process, focus on leadership in decision-making:

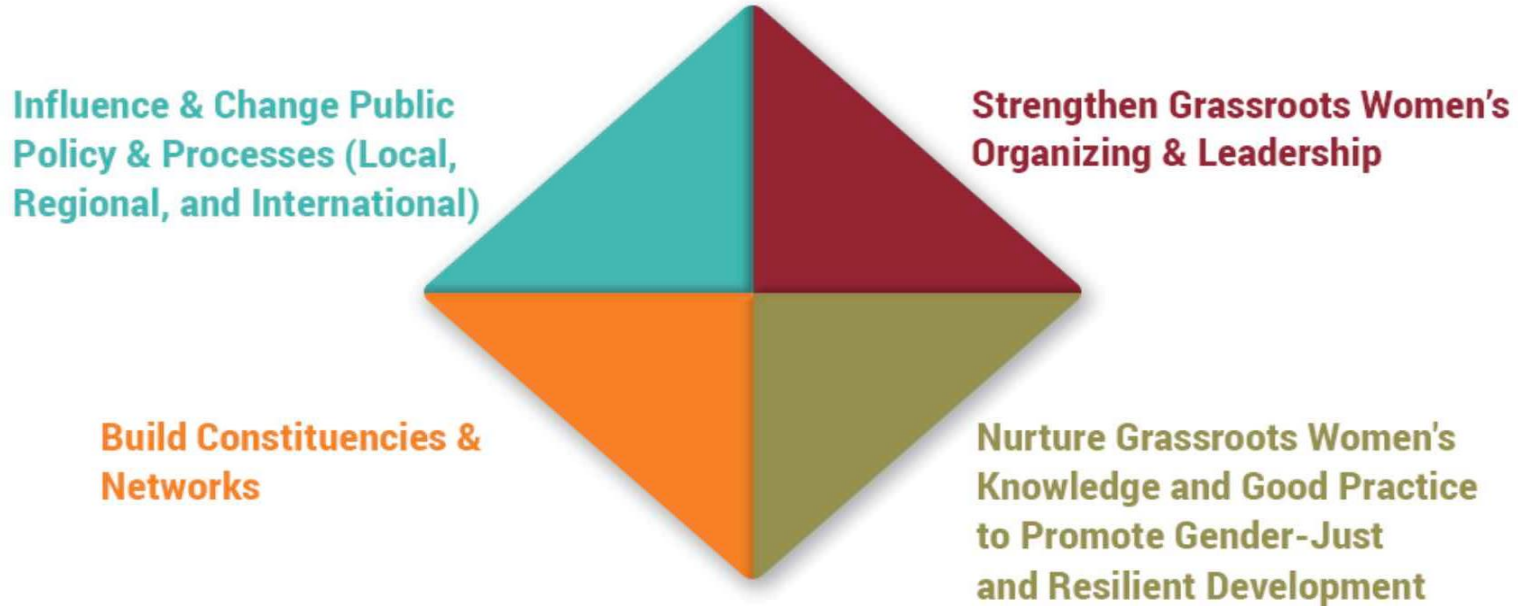
- The way women and men live their lives differently and have different needs. Urban planning affects the sustainability, accessibility, usability, design and quality of the infrastructure/place and process
- The intersectionality of women with different needs
- Enable policymakers to understand gender inequalities/ needs when planning any intervention or initiatives; avoid increasing gaps/inequality in implementation of policy, programs.
- Broaden perspective of the needs of all inhabitants, increase creativity and innovation, diversifies pool of talents and competencies, reduce conflicts, and improve process of decision-making/more democratic & inclusive.



HUAIROU COMMISSION
Women, Homes & Community

Community Resilience Diamond

A Methodology & Pathway for Change



Operationalizing the Diamond 1



Organizing grassroots women & building consensus on priorities

Build and support grassroots capacities - training them experts and nurturing leadership. Training include understanding global/regional policies; understanding budget process, guidelines established for gender equality-women empowerment and social inclusion.

Enabling grassroots women to:

- a) transfer skills, knowledge and practices and be positioned as informed actors, trainers, experts**
- b) set and negotiate their priorities & plans with decision makers**

Operationalizing the Diamond 2



Support grassroots women groups to undertake **mapping of their needs or issues** – a tool to understanding and prioritizing collective needs

Disseminating information of the findings(to communities & decision makers)

Provide small funds (e.g. for demonstration/piloting intervention) to initiate local actions and demonstrate what can be done – e.g. in terms of protecting informal settlements, improving basic services, securing land and housing, space for urban agriculture, etc.

Transferring and scaling up effective practices through grassroots-led training and peer exchanges

Operationalizing the Diamond 3



**Organise & undertake mapping of allies and partners; government agencies
Connecting communities with one another and with NGOs, building broader
coalitions across organizations**

Collaboration through peer learning, technical assistance and cross-fertilization

Consensus building and collective advocacy at national, regional and global levels

Operationalizing the Diamond 4



Influence &
Change Public
Policy & Processes
(local, Regional
and International)

Build Constituencies &
Networks

Strengthen Grassroots Women's
Organizing & Leadership

Nurture Grassroots Women's
Knowledge and Good Practice
to Promote Gender-Just
and Resilient Development

Organise the Local-to-Local Dialogue to engage decision makers at local, national, regional or global levels

Negotiate access to resources – propose gender responsive and participatory budgeting

Advocate & promote formal recognition as agent of change, key stakeholders and partners (via MOUs, appointment to decision making bodies etc.)

Participating in local election, active participation in community meetings and bringing in ideas, initiatives and social capital

Influencing policy and program design, implementation and monitoring so that it is gender and community responsive

Training key stakeholders

Recommendations:

- Organise to represent the constituency - women, community-grassroots, disability, older persons etc.
- Understand regional and global policies commitments to advocate & propose changes/inclusion in local and national policies.
- Build alliances and network with other sectors/groups-stakeholders (e.g. research/training institutes; the media etc)
- Advocate for partnership in localizing and implementing policies; as well as to access resources.



HUAIROU COMMISSION
Women, Homes & Community

A vibrant classroom in a rural Indian village. The room is filled with educational posters, including a large human body diagram with labels in English and Tamil, and a colorful mural of a giraffe and a village. Several children are sitting on the floor, and a woman is kneeling, possibly a teacher. The room has a window with a metal grille and a door with a colorful frame. The text "Q+A Please type your questions into slido!" is overlaid on the image.

Q+A
Please type your questions into slido!

Q & A

Please go to Slido

You can join via

- the link in the chat
- at Slido.com #Peer_Learning_4
- the QR code



Q & A

- What methods can be used to analyze the effectiveness of participatory approaches in urban planning?
- What Impact do the projects and initiatives have on male actors?
- With the Femmedina project, what did not work in terms of implementation? Was there something that was new? Something different from the strategy "on paper"?
- What could be an example for medium size inclusive infrastructures?

Evaluation

Please go to Slido


You can join via

- the link in the chat
- at Slido.com #Peer_Learning_4
- the QR code



Opportunity for Exchange Beyond the Online Sessions

- Join us for discussions and updates on our Peer Learning and become a member of the community group “[Sustainable Urban Development](#)”!
- Hosted on the EU Capacity4dev platform, connecting development professionals around the world.
- A space to share practice examples, resources or events, and connect with your peers.
- For information on how to join the platform, see the [links in the chat](#).

 European Union

My Profile ▾

Search on Capacity4dev


Search

Capacity4dev

Post content

HomeTopicsCountriesArticlesResourcesBrowse content ▾

Home > Groups > Sustainable Urban Developm...



Sustainable Urban Development
Public Group

Sustainable Urban Development

Group | Public | 12 October 2010 21:42

60 Members 8 23 Discussions 68 Library Items

Leave group

Bookmark Like Share

OverviewInfoDiscussionsLibraryMembersEvents

Overview

Description

This public group serves as the central hub for all content related to **Sustainable Urban Development**. It's a broad community group that welcomes anyone interested in the built environment within sustainable development contexts. Don't hesitate to share events, opportunities, and engage in discussions within this community. The group is overseen by the [Urban Development Technical Facility](#) within DG INTPA F.4. You can explore the [Urban Development Network](#) to keep up with the activities supported by this Facility.

Group details

Owner
Capacity4dev Team

Admins
INTPA Administrator
Capacity4dev Team
Alexander Jachnow
Anja Van der watt
Urban Development Technical Facility
Laura Puttkamer

Language English

Latest activities

Filters

Results (1)

Sort by Upcoming ▾

Keywords
Type a keyword

Date
Future events ▾

Topics
Select a topic +

SDGs
Select an SDG +

24 SEP

Online Session: Leaving no women* and no one behind in sustainable urban development

Webinar

Posted on [Sustainable Urban Development](#), [Urban Innovation made in Africa – Sustainable Planning and Building](#)

Join us on September 24 to explore how women, girls and marginalized groups can be included in urban planning and construction processes in the Global South. Register here for this informative session and be part of a discussion...

Organised by Deutsche Gesellschaft für Internationale Zusammenarbeit (GIZ) and Cities Alliance

Online

Worldwide | Capacity Development, Children and Youth, Civil Society, Gender, Urb... +3

Thank you for your participation

Looking forward to see you in our next session! 28 November (tbd): **How to provide finance for the “unbankable”?** Stay tuned for updates in your inbox.

For any questions or ideas regarding our Peer Learning, please contact:
Clemens Heukrodt (clemens.heukrodt@giz.de) and Johanna Lübbers
(johanna.luebbers@giz.de)

Deutsche Gesellschaft für Internationale Zusammenarbeit (GIZ) GmbH

Registered offices
Bonn and Eschborn

Friedrich-Ebert-Allee 32 + 36
53113 Bonn, Germany
T +49 228 44 60 - 0
F +49 228 44 60 - 17 66

E info@giz.de
I www.giz.de

Dag-Hammarskjöld-Weg 1 - 5
65760 Eschborn, Germany
T +49 61 96 79 - 0
F +49 61 96 79 - 11 15

www.city-transitions.global

www.urbanet.info