



***Delivering
EU humanitarian and development assistance
in fragile/crisis situations***

***Building Resilience
in Ethiopia
EU - RESET***



***David Mogollon (DEVCO) &
Johan Heffinck (ECHO)***

New approach to drought response



- Based on the critical premise that the way we have approached recurrent humanitarian crises is not cost efficient, does not give lasting results and should be changed
- **From saving lives to saving livelihoods**

Evolution of EU Strategy (ECHO and DEVCO)

FROM (ECHO)	→	TO (ECHO and DEVCO)
Nutrition centred		Multi-sector with nutrition and food security as entry point Nutrition sensitive and specific
Often short term		Middle to long term commitment
Mostly on curative side		Curative and preventive
Pure humanitarian		Humanitarian and development integration
Often installing parallel systems Working in isolation		Interaction with GOE woredas/zones/regional or federal level
<u>Stop and go</u>		<u>Stay and get ready for next drought</u>

Note that the long term aspects are more concerning the Development side of the EU than ECHO.

Key elements of the concept

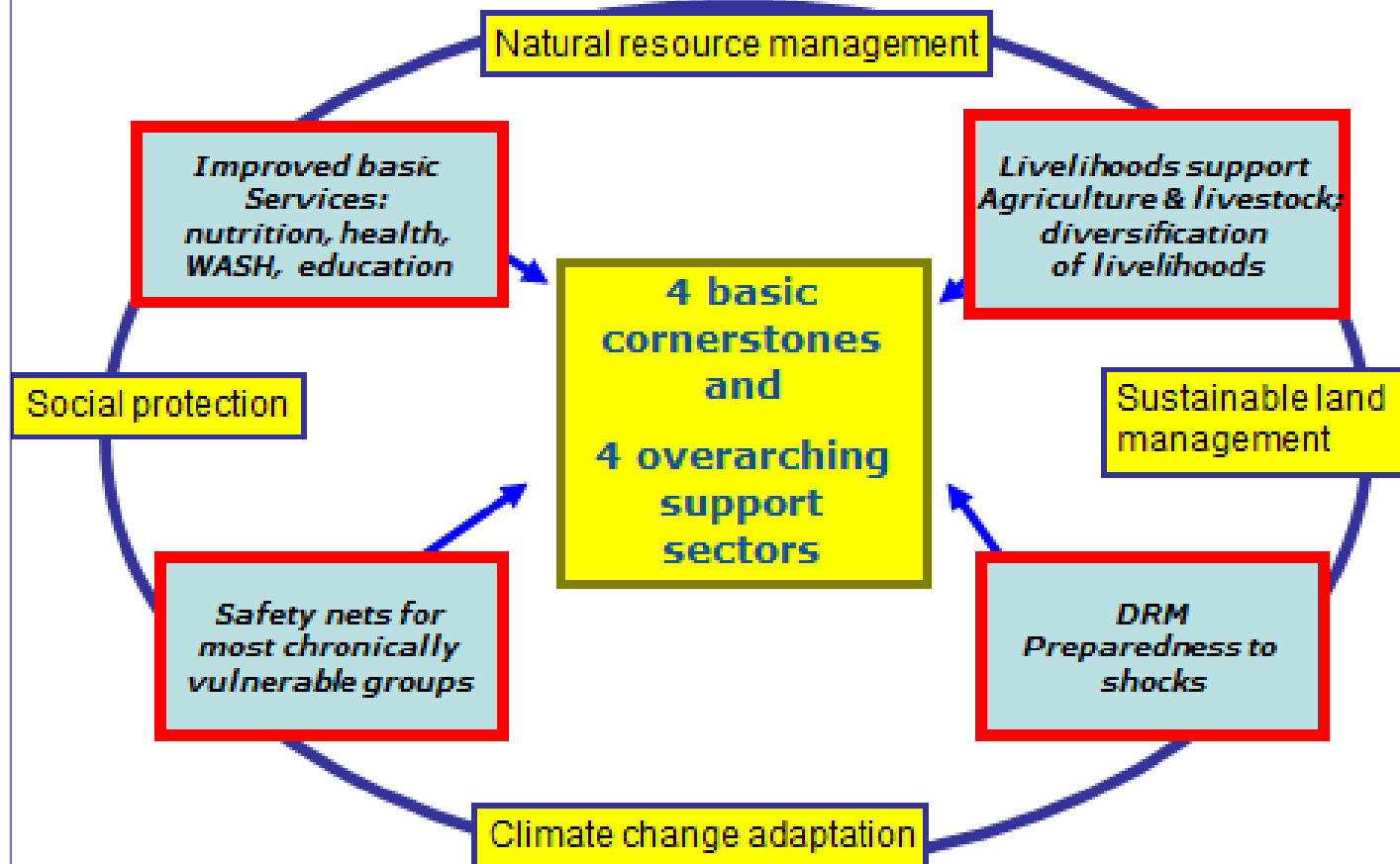


- **Multi-sectoral: 1+1 = 3**
- **Geographic focus in clusters**
- **Mid to long term perspective**
- **Targeting the most vulnerable**
- **Consortium of partners**
- **Meaningful Operational coordination**
- **Links with other interventions (such as GOE flagship programmes – e.g. PSNP)**
- **Division of Labour and Crisis modifier**
- **Exit & Entry criteria**



European
Commission

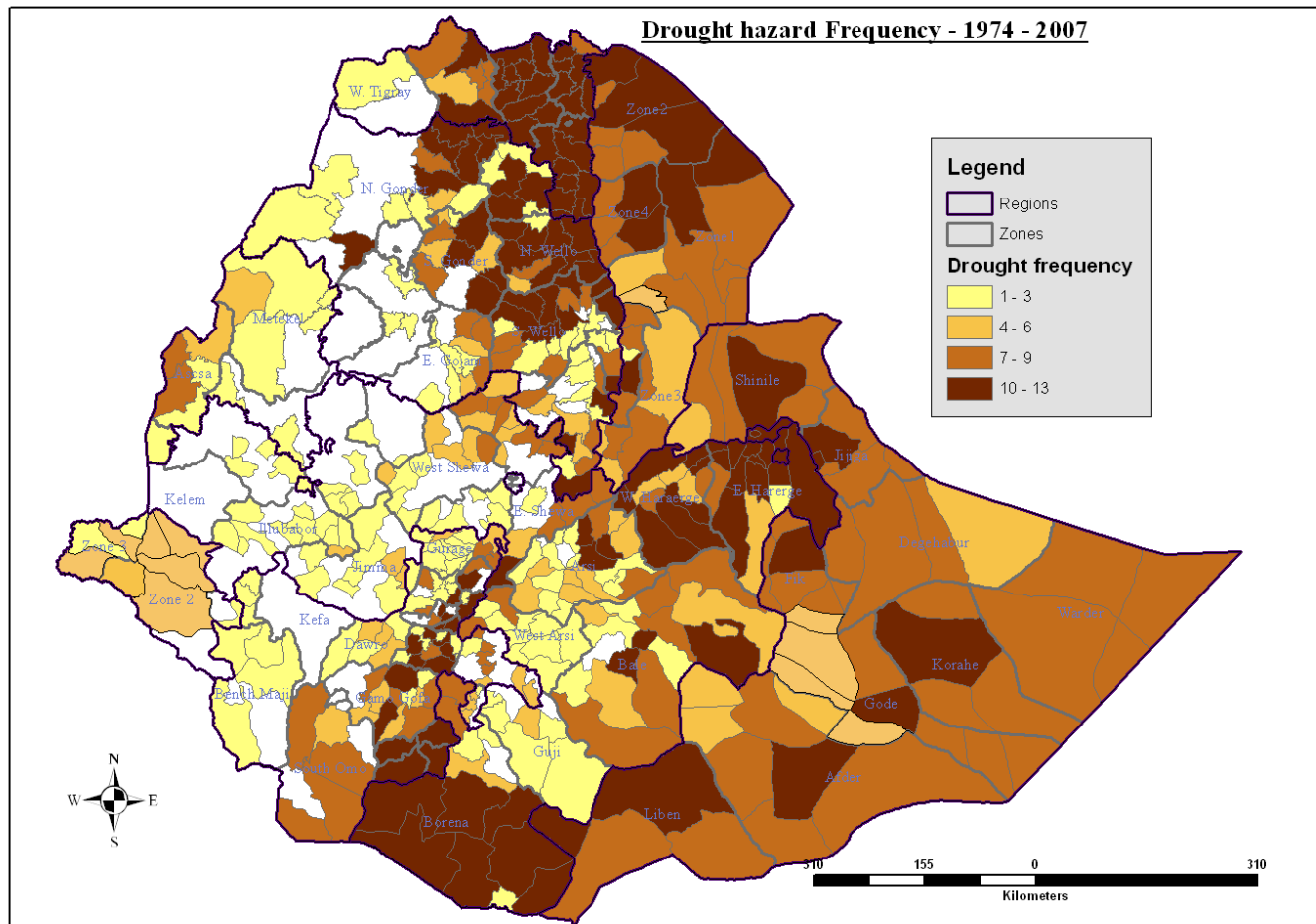
Basic Resilience Building Model



Selection of 'EU Resilience Clusters'



- **8 areas identified (clusters of districts) / 34 districts in total**
- **Covering > 2.5 M people** out of ~ 12 M people in Ethiopia who are drought exposed
- Selection based on historic needs
- Homogeneity of livelihood features (common risk analysis)



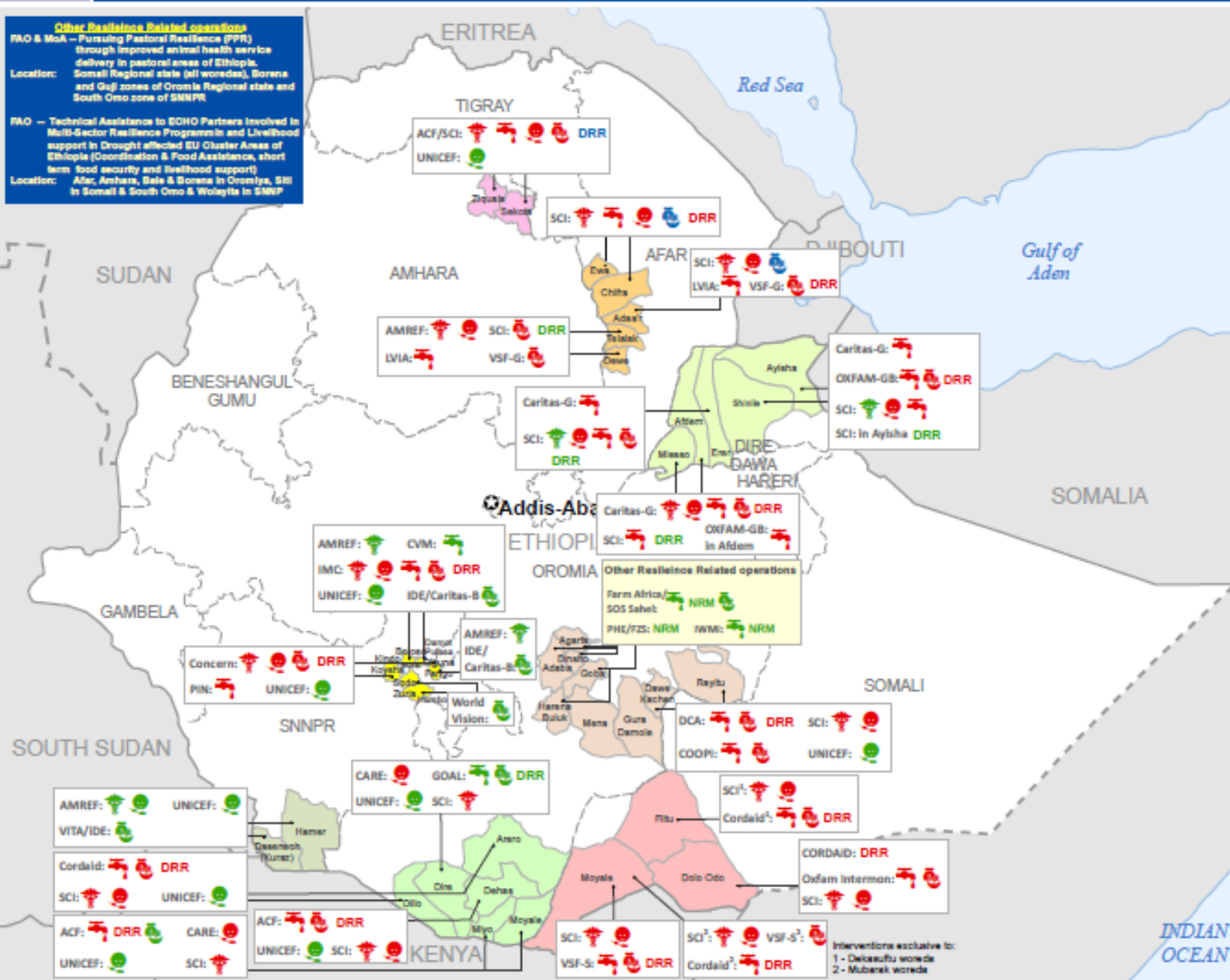


Resilience Building in Ethiopia (RESET): Map of EU Resilience Clusters and Sectoral Interventions (ECHO + DEVCO)

March 2015

Other Resilience Related operations
FAO & MoA – Pursuing Pastoral Resilience (PPR) through improved animal health service delivery in pastoral areas of Ethiopia.
Location: Somali Regional state (all woredas), Borena and Gaji zones of Oromia Regional state and South Omo zone of SNNPR

FAO – Technical Assistance to ECHO Partners involved in Multi-Sector Resilience Programmes in Livelihood support in Drought affected EU Cluster Areas of Ethiopia (Coordination & Food Assistance, short term food security and livelihood support)
Location: Afar, Amhara, Bale & Borena in Oromiya, Sidi in Somali & South Omo & Wolyayta in SNNPR



Legend

- National capital
- International boundary
- Undetermined boundary

Clusters

- Afar
- Amhara
- Bale
- Borena
- Liben
- Sidi
- South Omo
- Wolyayta

Sectors

- Health
- WASH
- Nutrition
- Livelihoods
- DRR: Disaster Risk Reduction
- NRM: Natural Resource Management

The different color icons represent:
Red: funded by ECHO
Green: funded by DEVCO
Blue: funded by ECHO+ DEVCO

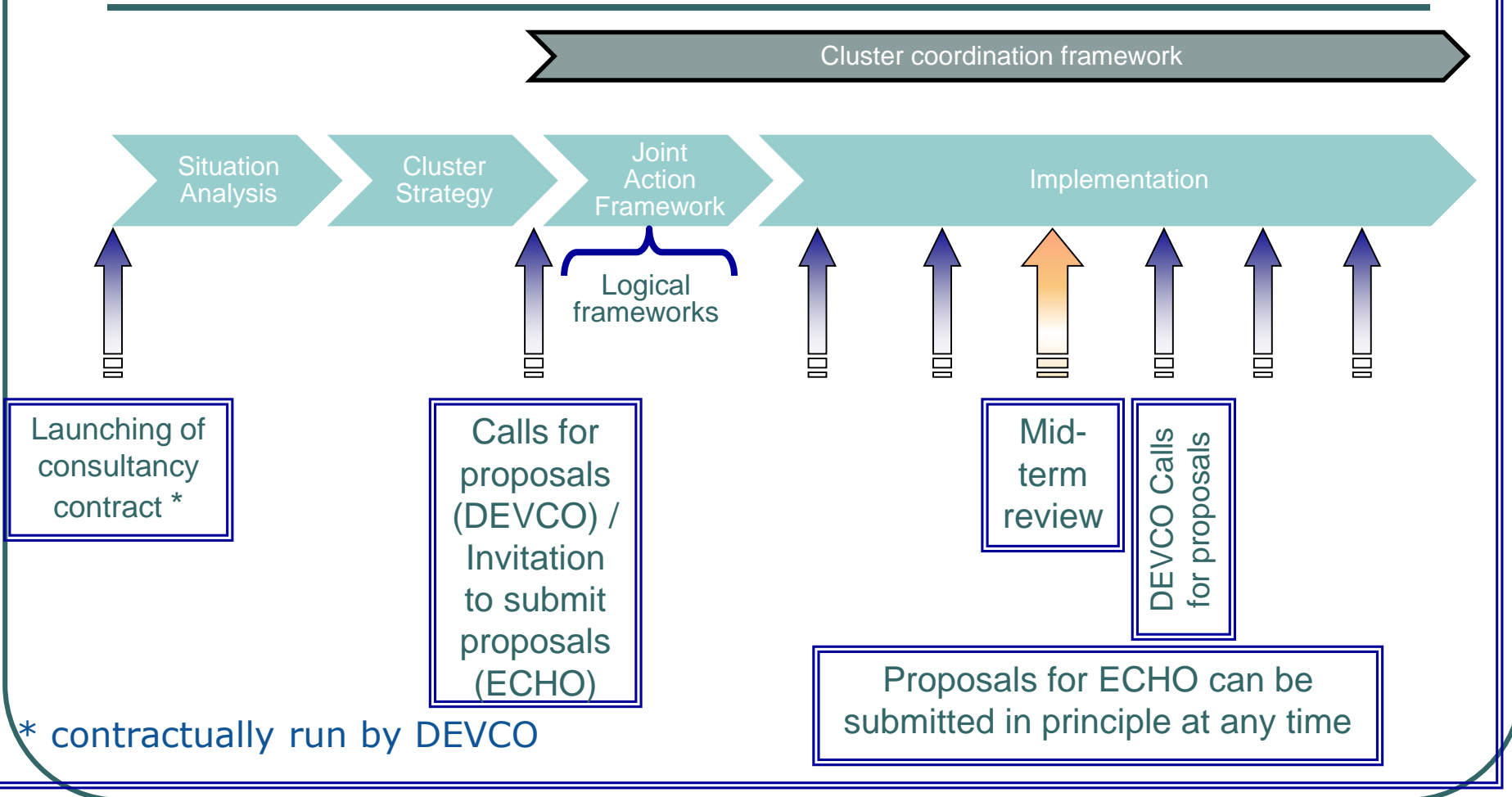
Mubarak & Dekasufu are relatively new woredas whose border demarcation not yet known; hence the interventions are shown in their mother woredas Moyale and Pitu respectively.

Map Doc Name: 2015_03_10_ECHO_DEVCO_ETHIOPIA
Creation Date: 10 Mar 2015
Map data copyright: ©
Map prepared by OCHA/INM Section

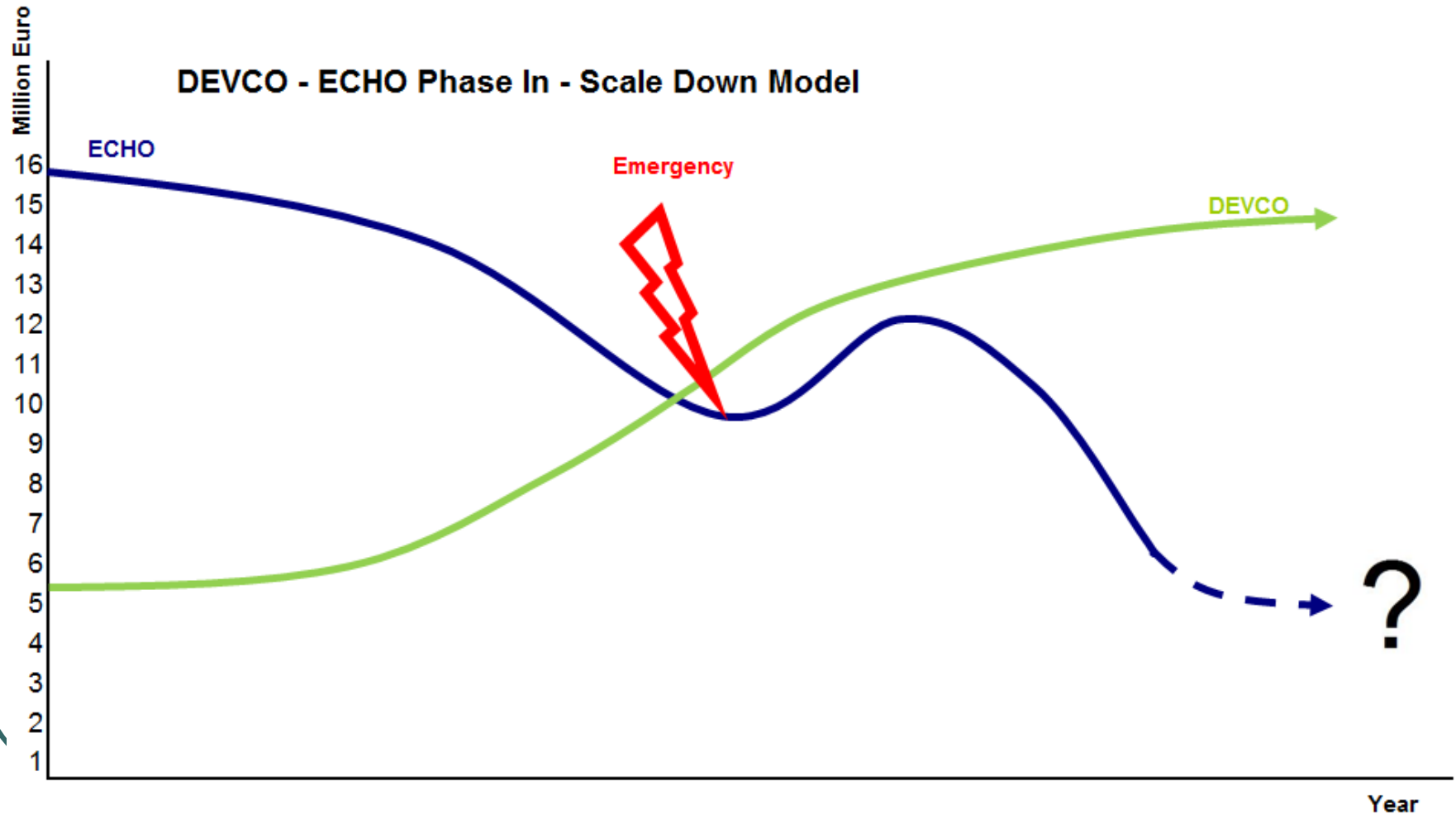
Disclaimer:
The designations employed and the presentation of material on this map do not imply the expression of any opinion whatsoever on the part of the Government of the United Nations and the European Commission concerning the legal status of any country, territory, city or area or of its authorities, or concerning the delimitation of its frontiers or boundaries.



Cluster programme Development Cycle



Cluster Development Cycle





Articulation of Support Instruments

Financial instrument	2012	2013	2014	2015	2016	2017	2018	2019
ECHO	Approx. € 40 M				To be determined			
IFS	€ 13.5 M							
SHARE 10 th EDF			€ 50 M					
P4RESET 11 th EDF					€ 30 M (1 st phase) and € 30 M (2 nd phase)			
Netherlands Coop.					TBC (€ 9 M)			

Separators and solutions/unifiers

- Mandates
- Time perspectives
- Procedures and financial regulations
- Links to GOV
- Alignment with GOV policies and integration with GOV flagships
- Partners
- Lack of overall framework to work together
- Common cluster framework
- Common strategy and analysis
- Define division of labour
- Define clear targeting criteria
- Align financial instruments
- Use same consortia of NGOs



Way forward

- Concrete operational response
- Humanitarian-Development framework
 - One joint programme co-financed by ECHO/DEVCO?
 - With one management structure?
- Scaling-up
 - ECHO + DEVCO
 - Gov
 - EU MS
 - Regional



Thank you ...

Photographs – Andy Catley, Kelly Lynch and Cathy Watson