

NaturAfrica: West Africa regional programme

Sustainably reconciling biodiversity conservation and local economic development under the impetus of inclusive governance

Conservation



Green economy



Governance



Through the NaturAfrica initiative, the European Union (EU) and West Africa Economic and Monetary Union (WAEMU) Commission are supporting a network of key landscapes for conservation and development in West Africa, with the aim of sustainably managing wildlife and stimulating economic growth in the region, supporting ecosystems and ensuring resilience in the face of increasing external pressure.

Landscapes identified for the West Africa regional programme (Phase 1)

| Landscape (see map overleaf) | Proposed operator | Imple- mentation period | Landscape | Proposed operator | Imple- mentation period |
|--------------------------------------|---|-------------------------------|-------------------------------------|----------------------|-------------------------------|
| 1. Niokolo-Badiar-Boé | IUCN | 2025-2028 | 8. Greater WAP Benin | African Parks | 2023-2026 |
| 3. Gola - Foya | Royal Society for the Protection of Birds | 2025-2028 | 8. Greater WAP Niger | to be decided | ? |
| 5. Nimba | to be decided | 2026-2029 | 9. Fazao Kyabobo | to be decided | ? |
| 6. Taï - Grebo-Krahn - Sapo | WCF | 2025-2028 | 10. Gadabedji – Termit & Tin-Toumma | to be decided | 2025-2028 |
| 8. Greater WAP / PONASI Burkina Faso | Anges Gardiens de la Nature | 2025-2028 | 11. Cross River | WCS | 2025-2029 |

Continental programme

The NaturAfrica continental programme covers 6 terrestrial biomes and 4 coastal/oceanic zones in sub-Saharan Africa, through 69 EU programmes (6 multi-regional, 17 regional and 46 national), with more than €1.4 billion planned until 2025. It places human rights at the heart of its action, and applies a landscape approach based on three pillars: conservation, green economy and governance.

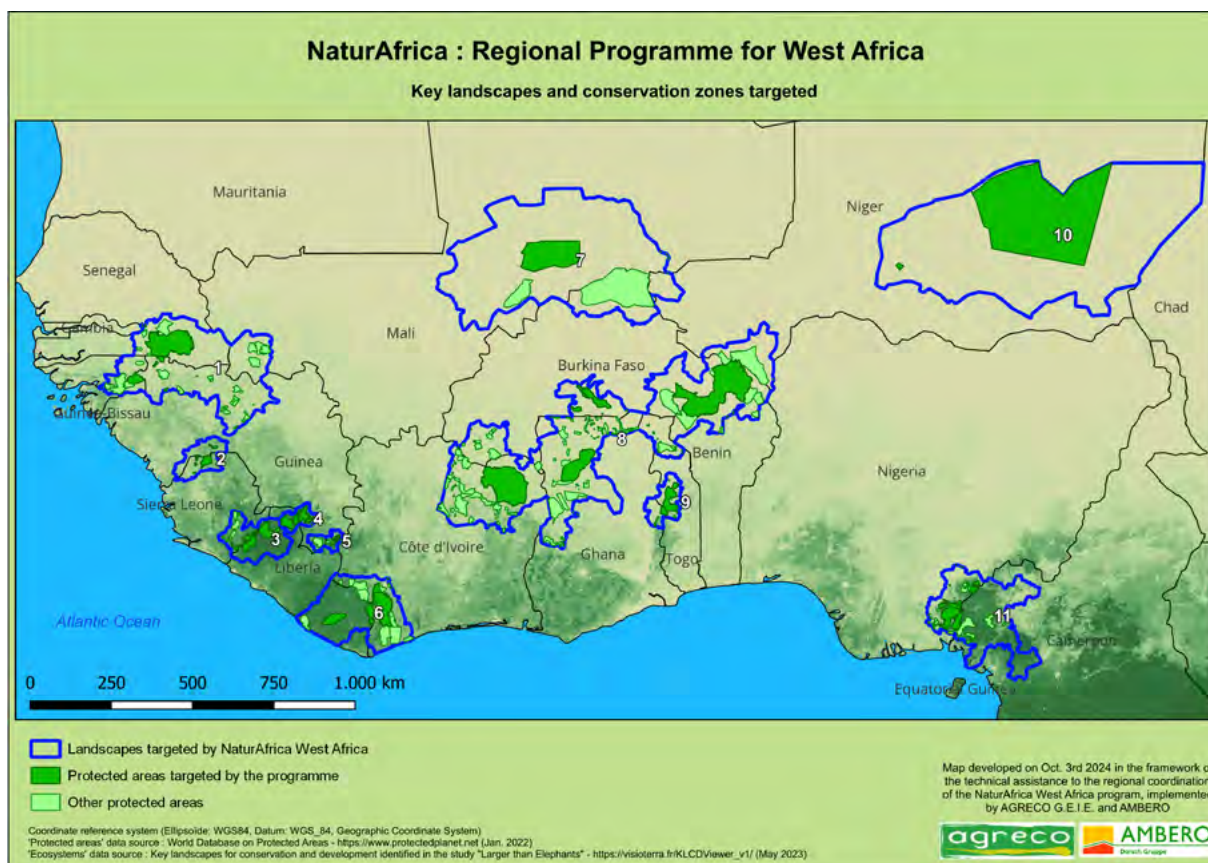
Regional programme in West Africa

The Regional Programme supports transboundary landscapes with a budget of €41 million. It is complemented by national projects funded by the EU and its Member States. The initiative contributes to the implementation of WAEMU and ECOWAS regional environmental policies, in particular the Regional Strategy for the Management of Protected and Conserved Areas in West Africa to 2050, as well as the 30x30 objectives of the Kunming-Montreal Global Biodiversity Framework.

Why NaturAfrica?

With a predominance of economic sectors largely dependent on natural resources, sustainable management of key West African landscapes, particularly transboundary ecosystems, means contributing not only to the preservation of its biodiversity, but also to the strengthening and resilience of the productive bases of local economic and social development for the benefit of current and future generations. The NaturAfrica initiative is part of a collective and inclusive drive to reduce the threats to these ecosystems and promote their sustainable use.

NaturAfrica in West Africa builds on the lessons and results of the PAPFor, PAPBio and other regional programmes. Relevant data and information will be collected to inform decision-making processes and will be made available to the Regional Observatory for Biodiversity and Protected Areas in West Africa (OBAPAO).



NaturAfrica West Africa regional coordination

The main tasks of the NaturAfrica West Africa Regional Coordination team are as follows:

- leading and coordinating the various landscape stakeholder platforms;
- carrying out regional studies and promote common tools;
- facilitating regional governance, enabling economies of scale;
- contributing to integration with other regional programmes;
- ensuring the proper management of knowledge and capitalisation of results.

The regional coordination team is based in Ouagadougou and Monrovia. It works closely with the EU Delegation to Burkina Faso and the Commission of the West African Economic and Monetary Union (UEMOA).

Implementation of actions in transboundary ecosystems

- developing the landscape approach, including spatial planning;
- supporting and contributing to the resilience of 45 protected areas;
- helping to maintain natural habitats;
- supporting the mobilisation of communities for shared and inclusive governance of natural resources;
- supporting the development of a green economy for local jobs and income.

These actions are carried out by operators in close collaboration with the national administrations and other main beneficiary stakeholders. The landscape programmes are managed by 10 EU Delegations in West Africa, which are responsible for national coordination.

Contact NaturAfrica West Africa Regional programme:

Regional coordination: marc.languy@agrecO.be | georges.namoano@agrecO.be | renaud.baillieux@agrecO.be | katharine.mill@agrecO.be

European Union Delegation to Burkina Faso: delegation-burkina-faso@eeas.europa.eu

The regional coordination of NaturAfrica West Africa is implemented by the AGRECO and Dorsch Impact consortium

