

Welcome to our first newsletter

Welcome to the first newsletter for the NaturAfrica West Africa regional programme. We have added you to the mailing list as we think you may be interested. Please feel free to share with others. An 'Unsubscribe' option is available at the foot of the page.

REGIONAL NEWS



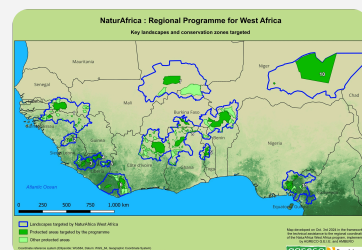
EU Delegations from West Africa meet to discuss programme

[Read more](#)



Learning from earlier programmes: links to useful resources

[Read more](#)



How the programme works

[Read more](#)

LANDSCAPE NEWS

Pendjari and W-Benin

In the first of the NaturAfrica West Africa landscapes to commence activities, African Parks and partners have undertaken numerous activities, despite the difficult security situation in northern Benin. A wildlife survey has shown particularly promising results.

[Read more](#)





Tai - Grebo-Krahn - Sapo

In late April, on the initiative of Liberia's Forestry Development Authority (FDA) and landscape operator Wild Chimpanzee Foundation, coordination meetings took place in Zwedru between the partners involved in the Tai – Grebo Krahn – Sapo transboundary landscape.

[Read more](#)

A field mission to the Liberian side of the landscape showed the scale of pressures – mining, cocoa cultivation and poaching – facing the protected areas.

[Read more](#)

Gola - Foya

We joined an RSPB-organised visit for EU staff from Liberia and Sierra Leone to meet national government partners in Freetown and the Gola landscape partners (in Gola Rainforest NP and Tiwai Wildlife Sanctuary) in Sierra Leone, as well as local communities.

[Read more](#)

In a instructive mission to the Liberian side of the landscape, the challenges for community forests were apparent.

[Read more](#)



Niokolo-Badiar-Dulombi-Boé

The programme for the landscape that includes protected areas in Senegal, Guinea and Guinea-Bissau is now underway.

Operator IUCN is putting together a team to manage activities in this savannah ecosystem.

[Read more](#)

Cross River

In southeast Nigeria, community management of the Mbe Mountains forest is an example to follow.

[Read more](#)

Our mission was an opportunity to visit the spectacular landscape and meet stakeholders in the protected areas.

[Read more](#)

Nimba mountains

Following preparatory and formulation missions in late 2024 and early 2025, a Call for Proposals has been launched for an operator to manage this landscape project.

[Read more](#)

Legal Notice

NaturAfrica West Africa regional coordination | Hotel Ricardo | Ouagadougou
WhatsApp +226 66 21 66 35 | katharine.mill@agreco.be | Project web page on capacity4dev

[Legal Notice](#) | [Privacy Policy](#) | [Unsubscribe](#)