



Unlocking Global Gateway investments in nature and the green economy

Brussels, July 7-10



SESSION

Navigating Fragility and Building Resilience

-

The Role of Environmental Action

Thursday, 10 July 2025

9:00-10:30



Chantal MARIJNISSEN

Head of Unit – INTPA F2 (Environment, Sustainable Natural
Resources)





Session Programme

OPENING

-

by **Chantal MARIJNISSEN** (*HoU INTPA F2*)

CLOSING

-

by **Sabine ZWAENEPOEL** (*HoU a.i. INTPA G5*)

PRESENTATIONS

-

Apostolos NIKOLAIDIS (INTPA G5) on the current **state-of-play of the fragility/resilience agenda**

-

Romain CALAQUE (B4Life Crisis Facility) on **Greater Zakouma**

DISCUSSION

-

Moderated by **Niclas GOTTMANN** (INTPA F2) and **Apostolos NIKOLAIDIS** (INTPA G5) to **build a robust case for the inclusion and consideration** of environmental action in the fragility/resilience agenda

Apostolos NIKOLAIDIS

INTPA G5 (Resilience, Peace & Security)



Fragility & Resilience

“Strengthening resilience in partner countries through EU external action”



INSPIRE+
DEVELOPMENT INITIATIVES, PARTNERSHIPS
GROUPS, RESEARCH & INNOVATION



ODI Global

Towards an EU
Integrated approach
to fragility





Brussels, 30 June 2025

WK 5739/2025 REV 4

LIMITE

DEVGEN
COHAFA
ACP
RELEX

SUSTDEV
COHOM
SAN
AGRI
EDUC

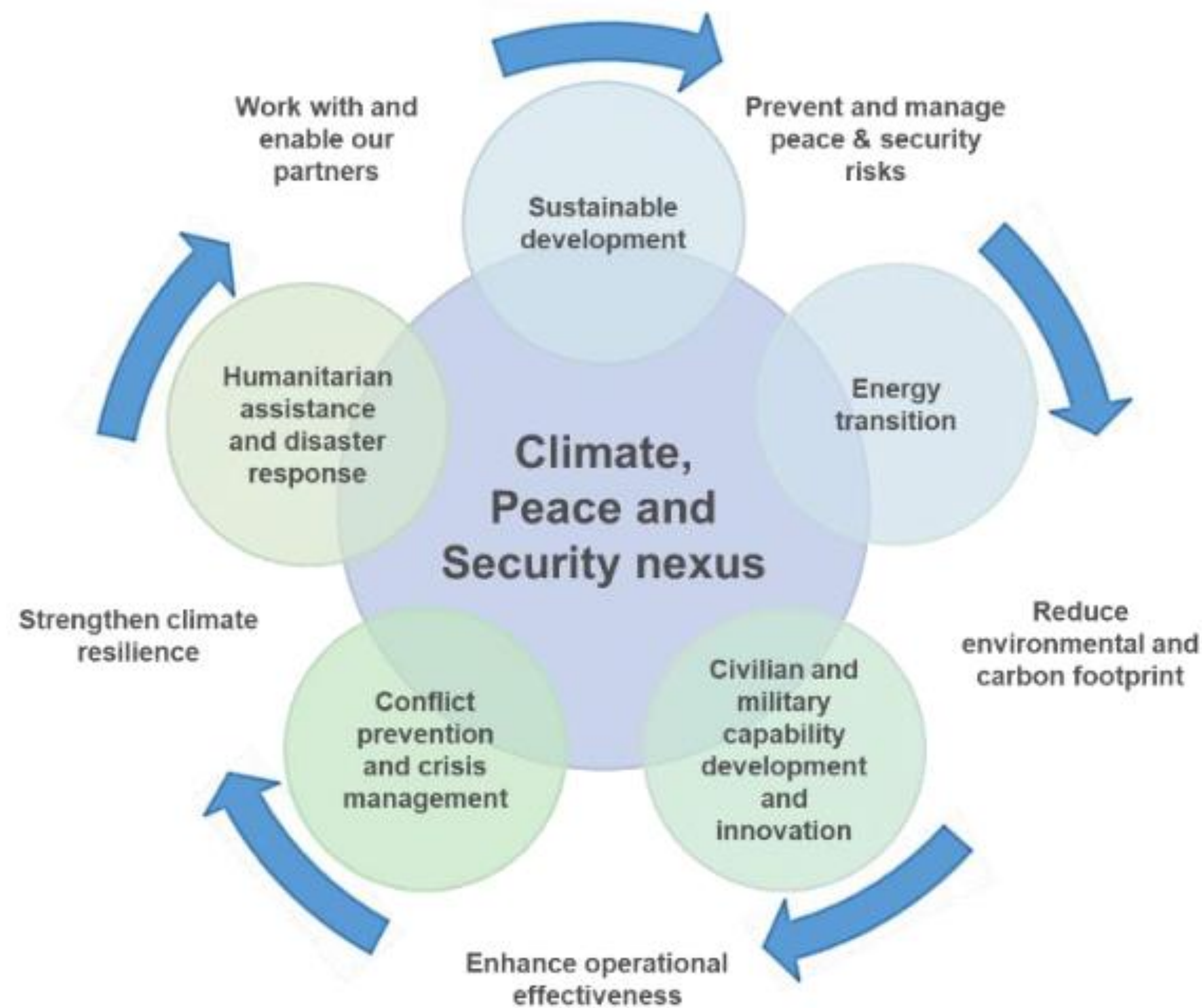
This is a paper intended for a specific community of recipients. Handling and further distribution are under the sole responsibility of community members.

WORKING DOCUMENT

From:	General Secretariat of the Council
To:	Working Party on Development cooperation and international partnerships
Subject:	Strengthening resilience in partner countries through EU external action - Draft Council conclusions - Written consultation (DL 30/6 at 17:00)

The Joint Communication on the Climate & Security Nexus (+ its implementation)

Progress Report (Feb 2025)

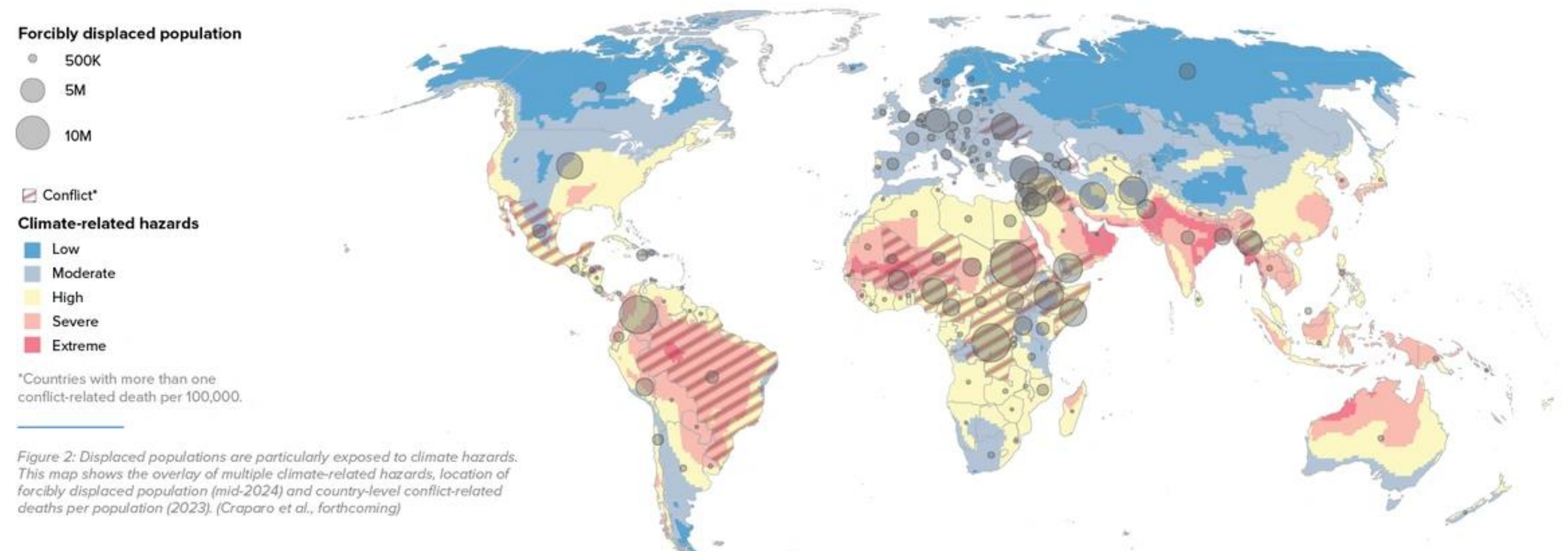


*The EU Early Warning and Conflict Analysis Toolbox now includes tools for conflict risk analysis with a **sharper focus on climate and the environment**, supporting policymaking and programming.*

- *Pilot: **Somalia** and carried out mostly in countries from the **East African region**.*
- ***Conflict sensitivity** support and **resilience** assessment tools that include a focus on **climate-related issues**.*

A perfect storm...

Climate change, environmental degradation, fragility, conflict & climate mobility, forced displacement



Rapid Response Pillar (RRP) - Resilience



Adaptive Social Protection in Pakistan

Protecting vulnerable households and strengthening their resilience to climate-related and other shocks

EU, UNICEF LAUNCH VT1.3 BILLION CLIMATE-RESILIENT SCHOOLS PROGRAMME



Quick Tips on Climate, Environment, Peace & Security



Quick Tips to integrate environment and climate change in specific sectors

The Quick Tips series provides practical ideas for colleagues in the European Commission headquarters, EU Delegations and partner country institutions to maximise occasions to address environmental and climate-related risks and opportunities in different sectors. They are short documents which are easy to digest. New Quick Tips documents are being produced at regular intervals. They will shortly be translated into French and Spanish.

[https://capacity4dev.europa.eu/...](https://capacity4dev.europa.eu/)

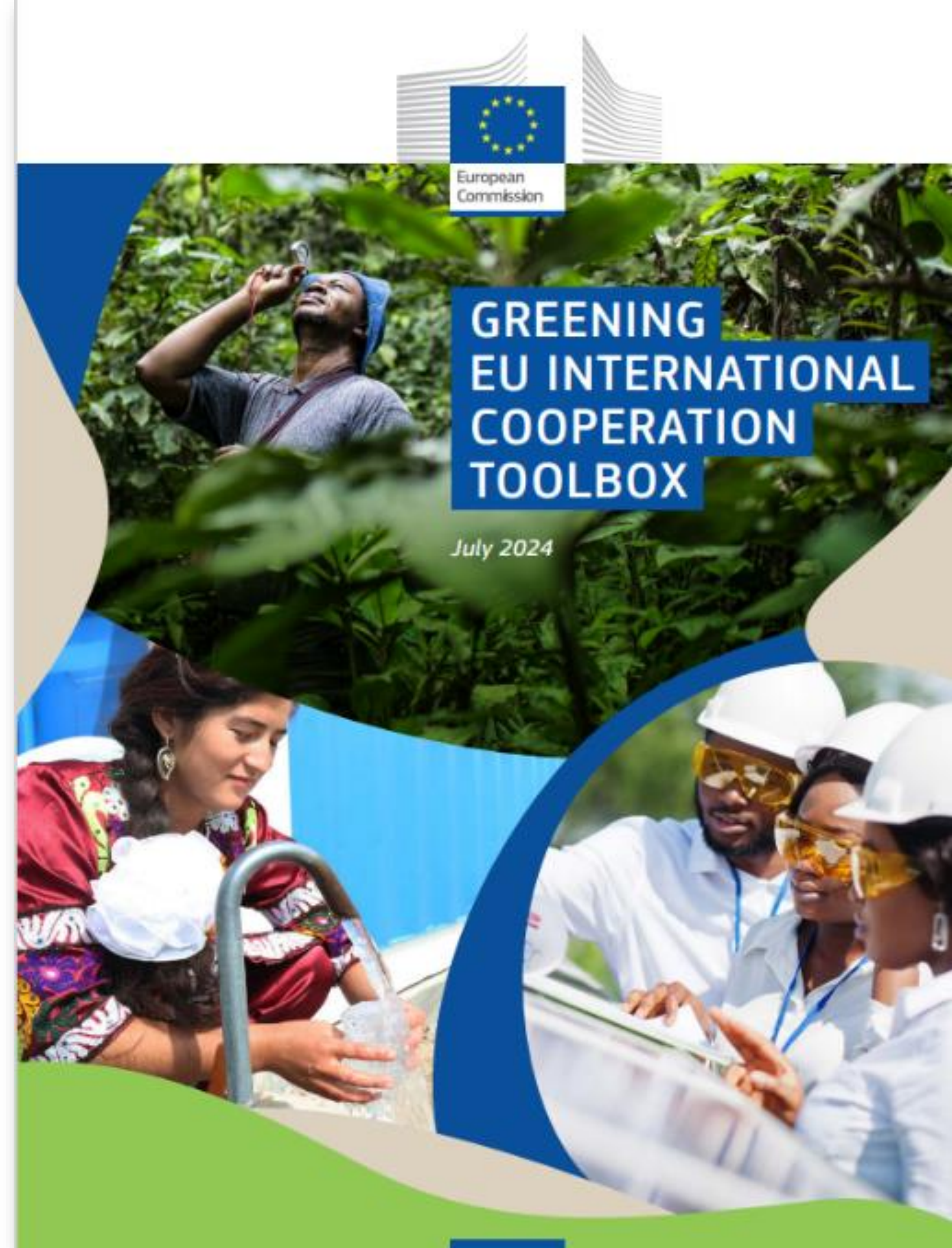


Sector Notes for the Integration of Environment and Climate Change

The Sector Notes provide practical guidance on the links between environmental protection/climate change and specific sectors and the opportunities to strengthen their integration in projects and budget support. These notes provide greater details than the Quick Tips for the sectors available.

[https://capacity4dev.europa.eu/...](https://capacity4dev.europa.eu/)

Sector note on agriculture, food security and rural development (English /



What's next?

- **EU dialogues on climate, peace and security in Afghanistan** (Kabul & BXL consultations)
- **Conflict Sensitivity in NaturAfrica**
- **ESPRE** – G5 Facility: opportunities for working on climate, environment, peace & security
- **Climate resilience conflict sensitive Global Gateway infrastructure & 360-degree approach**



THANK YOU!

Apostolos NIKOLAIDIS
INTPA G5 – Resilience, Peace, Security
Apostolos.NIKOLAIDIS@ec.europa.eu



Romain CALAQUE

Team Leader – B4Life Crisis Facility



NaturAfrica and Borderlands in the Greater Zakouma – Manovo Landscape

1. “How two initially disparate approaches/sectors **converged**”
2. **Zakouma-Manovo landscape:** a remarkable example of threats and opportunities
3. **Outlook:** withdrawal or consolidation





“How two initially disparate approaches/sectors converged”

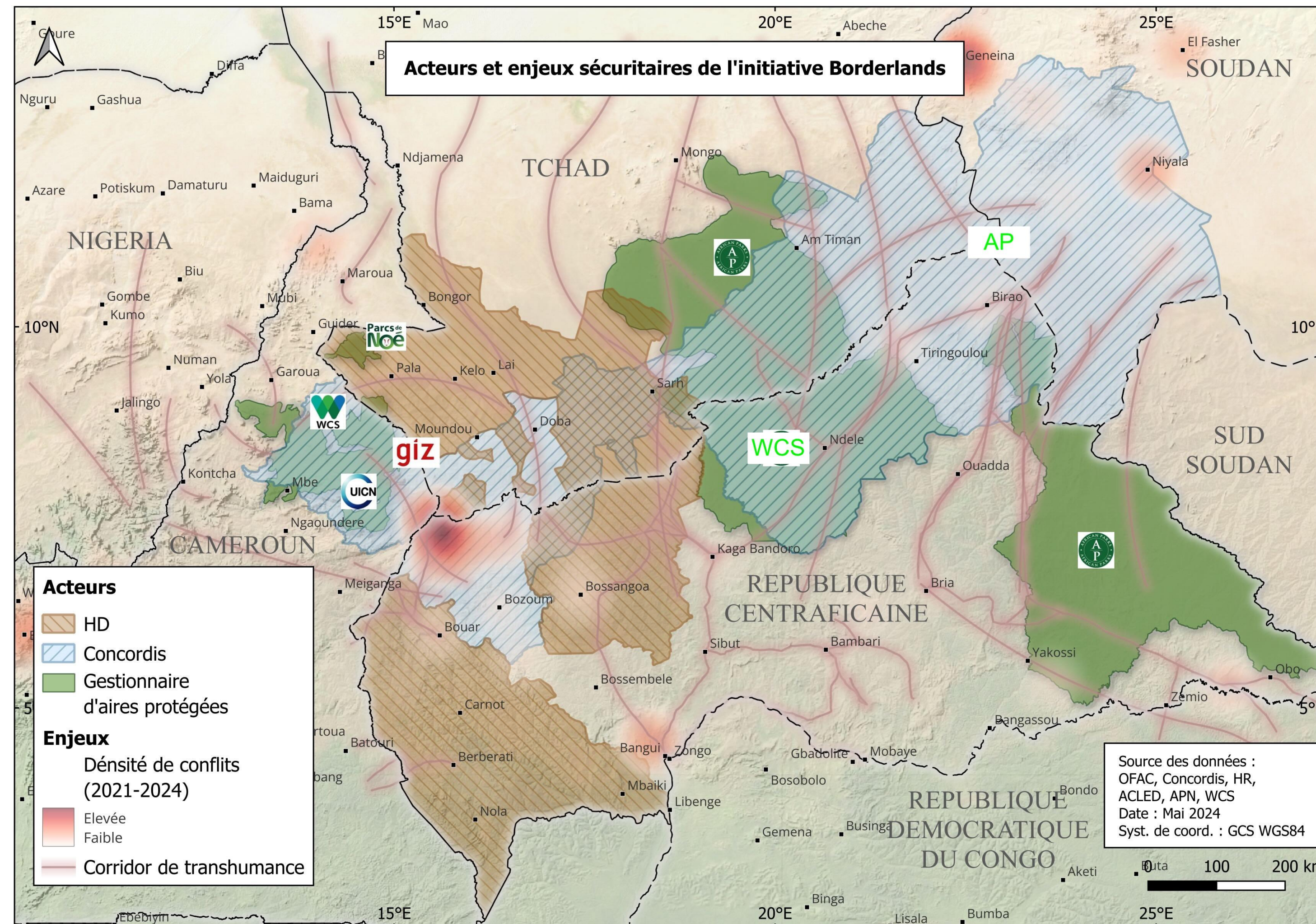
Conservationists: *integrating not only rural development, but also governance*

- **NAF strategic approach:** three pillars at the landscape level
- **Key players:** operators with long-term mandates
- **Trigger for relevant EU agents:** measurement of the importance of governance & LUP
- **In concrete terms:** very significant financial commitments from the delegations of Chad and the CAR

Peacemakers: *in addition to communities, ally with long-term mandated managers*

- **Borderland strategic approach:** Scale up positively tested small-scale mediation operators + cross-border
- **Key players:** 2 operators with different mediation methods
- **Trigger for relevant EU agents:** interest for field managers with long-term mandates
- **In concrete terms:** (indirect) inclusion in a peace-building contract of several natural resource actors

The Zakouma-Manovo Landscape: A Remarkable Example of Threats and Opportunities



Map of 2024: conflicts related to Darfur are now much intensified



Outlook: Withdrawal or Consolidation

Reduction in EU- (and affiliated) funding in areas such as Vakaga due to their real and symbolic danger

- High or even certain **probability of death** among conservation organization staff in the field (see historical examples in Garamba, Virunga, Pendjari, etc.)
- Very high **operating costs** (mandatory aviation, high-level logistics, high salaries, etc.)
- High **reputational costs** (criticism of militarization of conservation, green neocolonialism, etc.)

Maintain or even increase EU- (and affiliated) funding in these areas to strengthen their resilience

- A **unique opportunity** (with no alternative) to positively influence local governance in the long term, and therefore indirectly but surely improve security
- Opportunity to gradually **combine natural resource-oriented actions with human rights-oriented actions and basic social services** (if barriers between sectors within the EU are broken down)

A WORLD PREMIERE!

Land-Peace Nexus

“Farmer-Herder Conflict Resolution through Pastoral Units in Senegal’s Ferlo”

https://drive.google.com/file/d/1yFzxYHfukhSGM7r_uKNgKlial9VFgJEj/view



Moderated Discussion

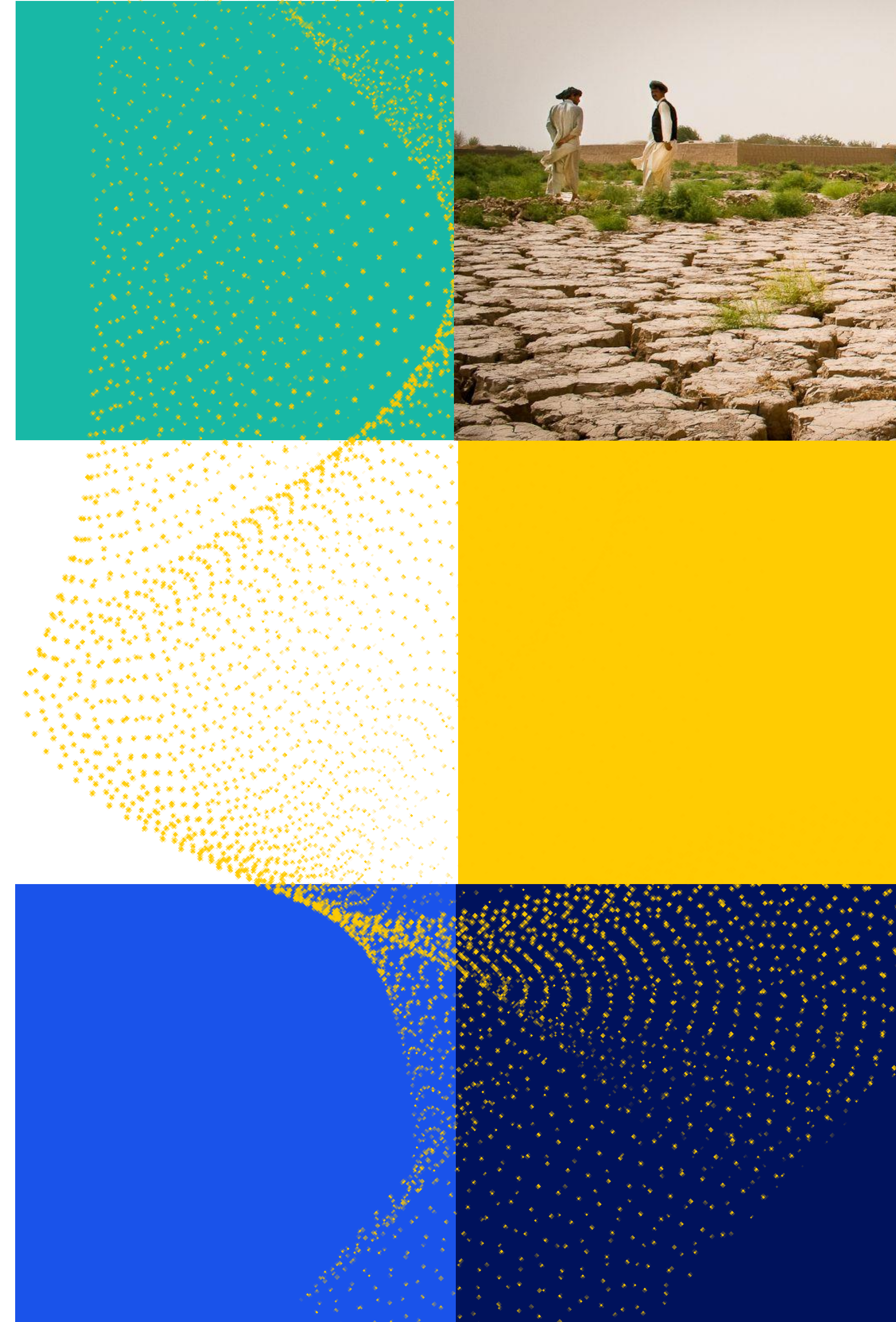


- “Can you tell us about **relevant experiences/good practices** at the climate-environment-peace-security nexus? Any concrete ongoing GG, TEI, HDP nexus, resilience building or other action that touches upon climate, environment, peace and security?”
- “What are some of the **challenges** that you deem hard to solve? What type of **support** do you need from HQ?”
- “How should future Global Gateway investments look like in this context, employing a 360-degrees approach?”

--

MODERATORS:

Niclas GOTTMANN (INTPA F2) and **Apostolos NIKOLAIDIS** (INTPA G5)



Interested in continuing the conversation?

Share your e-mail with us!



K4GGWA
Knowledge for Great Green Wall Action
WEBINAR


Regreening Africa

 17 July 2025 - 15.00 - 16.30 EAT



THE LAND-PEACE NEXUS:
ADVANCING RESTORATION
FOR PEACEBUILDING,
RESILIENCE AND STABILITY


CIFOR
World Agroforestry

 Funded by
the European Union

Sabine ZWAENEPOEL

Head of Unit a.i. – INTPA G5 (Resilience, Peace & Security)

