



Unlocking Global Gateway investments in nature and the green economy

Brussels, July 7-10



Delivering on the Global Gateway's Green & Clean ambition

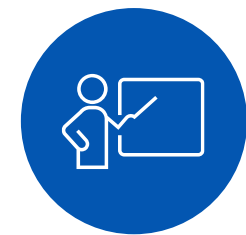
7 July 2025



Greening Facility and the Greening Toolbox



Communication and awareness raising



Capacity development



Development of procedures, guidelines and tools



Screening and review of documents



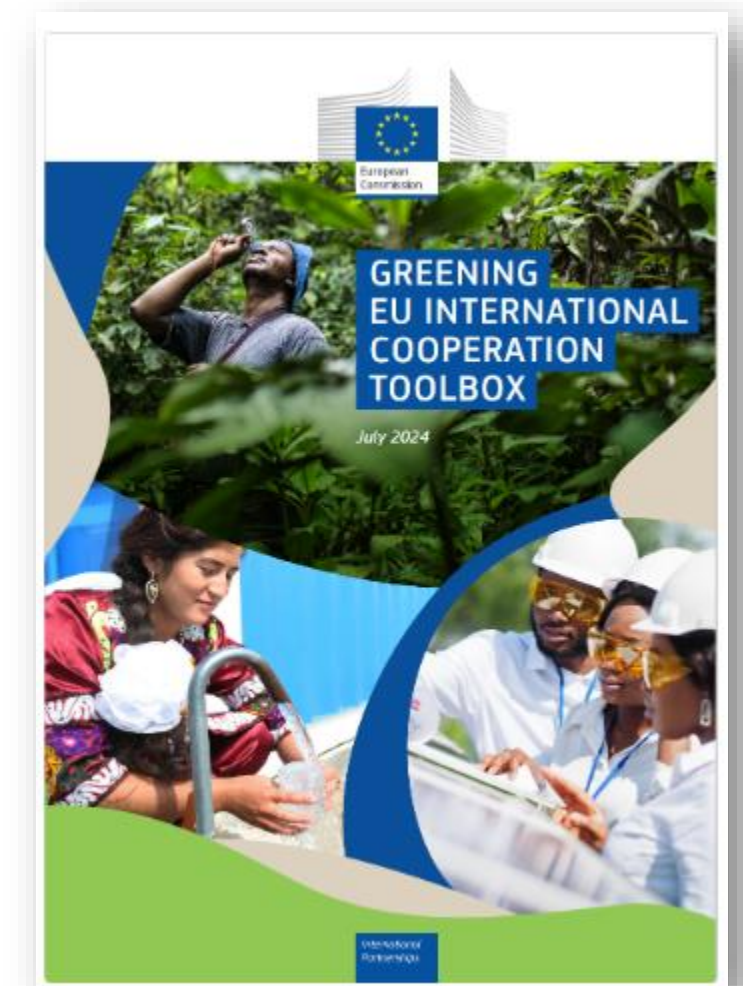
Tracking of financial contributions



Support services:

INTPA F2: Bernard.Crabbe@ec.europa.eu | INTPA F1: Jose-Carlos.EDO-MONFORT@ec.europa.eu;

Charlotte.FOFFANO@ec.europa.eu | INTPA-GREENING-FACILITY@ec.europa.eu



EU Global Support Facility for Nationally Determined Contributions (NDCs)

By analyzing climate policies, strategies, and programs in partner countries, the Climate Facility supports the European Commission in **designing investment initiatives**.

This ensures these programs are "climate-proof" through the integration of climate change **mitigation / adaptation / and disaster risk reduction measures**, contributing to low-carbon and more resilient economies in Partner Countries.



José Carlos Edo Monfort
Angel Gutierrez Hidalgo
eu-ndcf-facility@ec.europa.eu

INTPA.F1
Climate Facility



- January 2020 till October 2026
- Team of 5 KEs supported by 1 Project Manager
- Scope: protection, restoration and sustainable use of forests:
 - Forest governance
 - Value chains
 - Finance and investment
- Services:
 - Action documents, SSC fiches
 - Policy advice (e.g. EUDR)
 - Webinars
 - Thematic studies: value chains, forest finance
 - **Forest Partnerships** – holistic sector support
- Service requests via Patrice Moussy, INTPA F2



Supporting Forest Partnerships with the European Union



- Forest Partnership (FP)**
- Republic of the Congo
 - Gabon
 - Guyana
 - Honduras
 - Mongolia
 - Uganda
 - Zambia





B4Life - biodiversity and nature at a national, regional and global level



Focus on:

- **Biodiversity conservation, restoration and management**
- **Biodiversity mainstreaming**
- **Knowledge and capacity building**
- **Policy coherence and visibility**

Activities:

- Direct support to HQ and EUDs
- Project preparation and review
- Desk studies, missions, cartography
- Integration: Nature based Solutions, finance
- Knowledge documents, capacity building
- Support policy work and dialogue



Geraldo Carreiro
KE1 – Team Leader



Stefania Petrosillo
KE2 – MENA/ENEST region



Quentin Jungers
KE3 - INTPA region



Walid Fayad
KE4 - Sustainable finance

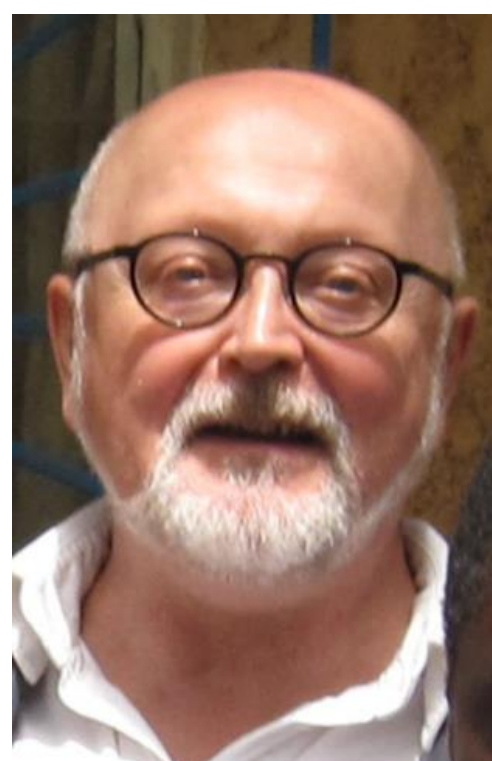
INTPA.F2: Aymeric.Roussel@ec.europa.eu



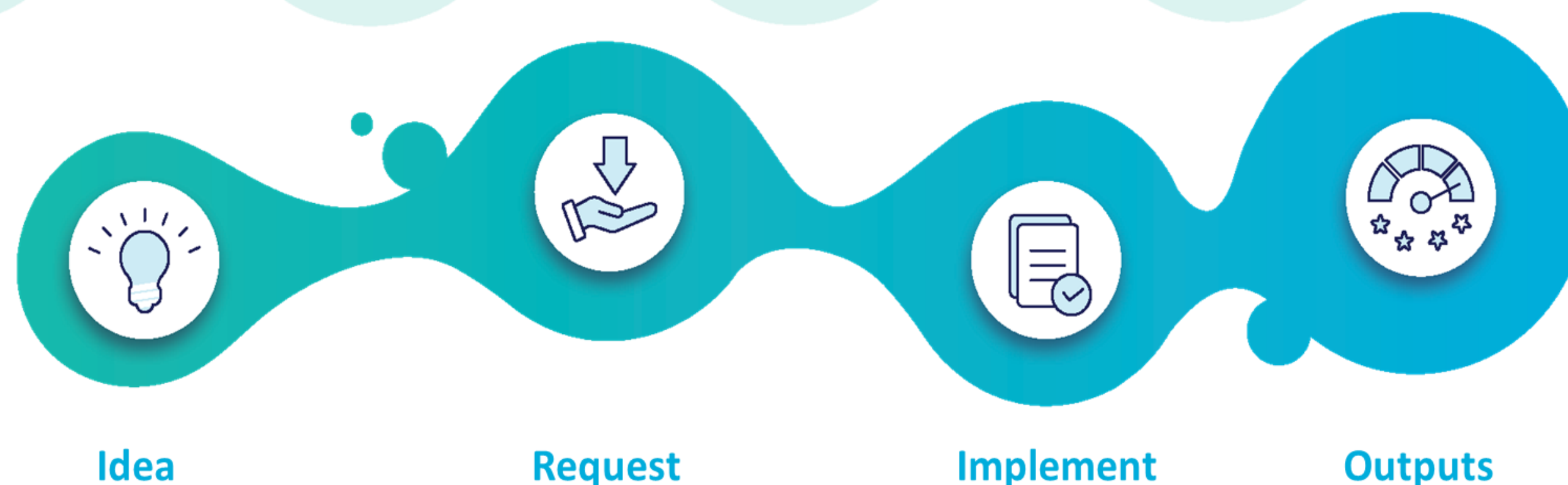
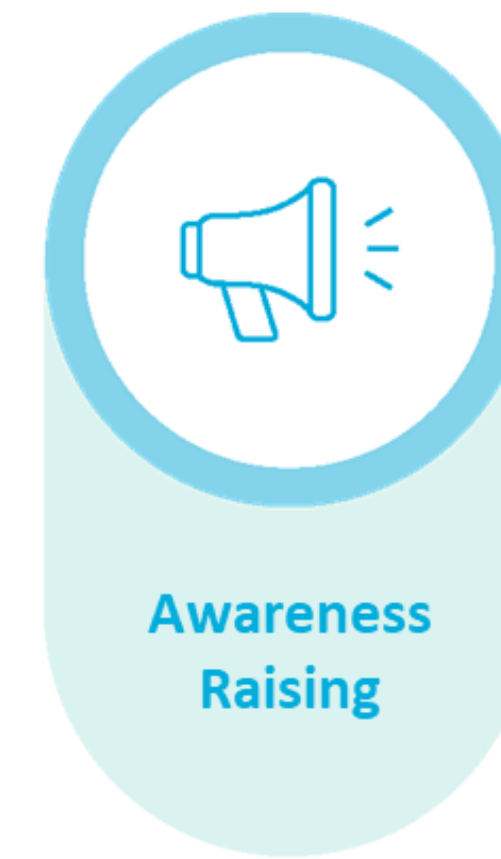
INTPA F2 Water Facility

Providing **technical support** to ensure sustainable water resources management

What we do



Murray Biedler
Team leader
biedler@ext.adelphi.de



Christophe Schmandt
Water & Sanitation expert
cschmandt@waterconsultancy.com

The SWITCH to Green Facility



Mr Alexander Charalambous
Team leader, a@lp.gr



Mr Jens Kristian Nørgaard
Technical Expert, Jens_switch2green@outlook.com



Ms Susanne Müller
Circular Economy & Knowledge Mgt.
s2gw_comm@lp.gr



Short-term technical assistance,
including through country missions



Awareness raising and
information sharing



Quality support, technical
backstopping and quality reviews



Support to policy dialogue and
programme coordination



Capacity building and know-how
development and sharing



Development of tools and
methodological support

www.switchtogreen.eu

EU Energy Facility

We deliver high-level technical assistance and policy advice

We are 8 full time / fully dedicated Key Experts + Non-Key Experts + backstopping team

Since 2020, we responded to ~500 requests from either F1 or EUDs

**Supporting energy
sector reforms with
improved policies and
reinforced capacities**

**Knowledge
management and
dissemination of best
practices**

**Mobilizing of
investments with focus
on EU partners**

**Reinforcing
partnerships and
actions towards SDG7**