

Forest Partnerships with the European Union

#GlobalGateway #ForOurPlanet

Forest Partnerships are long-term political **commitments** between the European Union (EU) and partner countries for the **protection, restoration** and **sustainable use** of forests in a holistic and inclusive way.

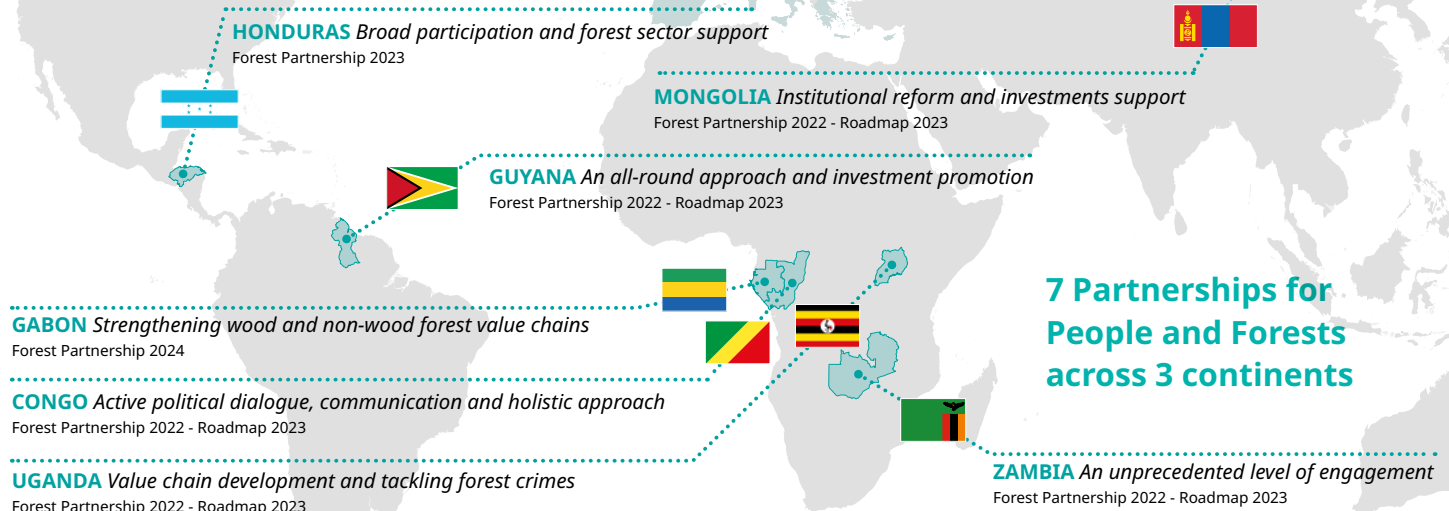
- **Contributing** to the Global Gateway
- **Stimulating** investments
- **Improving** governance and business environment
- **Promoting** sustainable forest value chains

Targets 2030*

- 48** million hectares more **sustainably managed** forests
- 21** million hectares more **protected** forests
- 2.7** million hectares more **planted** forests
- 1** million hectares more **restored** forests
- 1.2** million more decent forest **jobs**

Deforestation of natural forests reduced or maintained

* Congo, Guyana, Uganda and Zambia



**7 Partnerships for
People and Forests
across 3 continents**

KEY WORKSTREAMS

	CONGO	GABON	GUYANA	HONDURAS	MONGOLIA	UGANDA	ZAMBIA	
Forest governance	●	●	●	●	●	●	●	Improved regulatory framework Institutional reform
Sustainable use of forests	●	●	●	●	●	●	●	Sustainable forest management and forest value chains Promotion of a sustainable forest economy and job creation
Tackling climate change	●	●	●	●	●	●	●	Implementation and enhancement of NDC Prevention of deforestation and forest degradation Reforestation and restoration of natural forests
Forest Protection	●	●	●	●	●	●	●	Biodiversity conservation Eco-system services based on forest conservation
Human development	●	●	●	●	●	●	●	Social and human development Research

*A Global Gateway
flagship initiative*



For more info: INTPA-F2@ec.europa.eu

DG International Partnerships Unit F2 – Environment, Natural Resources, Water.

[Sustainable Forests for the Future Group](#)