

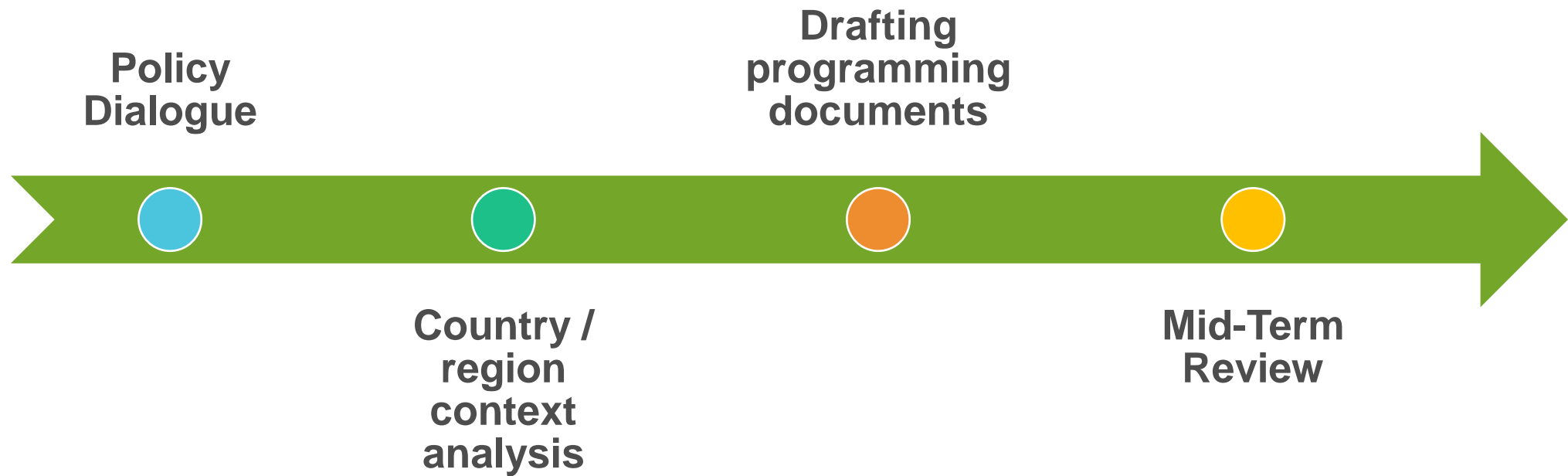


Greening EU Cooperation

Integrating Environment, Climate Change and Disaster Risk
Reduction in EU External Action

Session 4: Greening programming

Greening entry points in programming



Key greening actions in programming



Policy dialogue

- Include env/cc in policy engagement with partners



Analyse country (or region) env/cc context

- Use of CEP/REP



Align programming document with env/cc objectives



Provide for the preparation of an SEA, as relevant



Include indicators that capture key env/cc concerns



Update ambition in the MTR



Programming for the 2028-2034 MFF – what we may reasonably expect (so far)

- Competitiveness, 360-degree approach, security, Clean Trade and Investment Partnerships (CTIPs), CRM, clean industries,...
- The road to the next multiannual financial framework [COM(2025)46 final]

Greater coherence in financing of internal and external policies ...to promote the Union's strategic interests

External action financing also covers a wide range of areas with significant internal and external policy interlinkages – from overall trade policy to materials, energy, [climate](#), migration

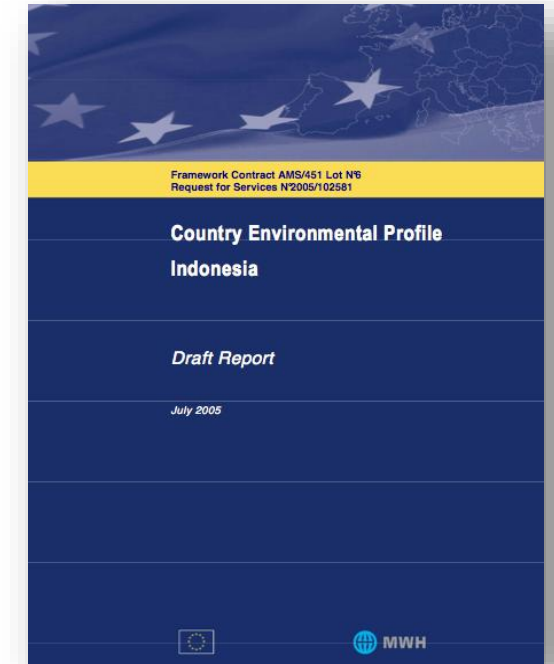
- Joint Communication on European Preparedness Union Strategy [JOIN(2025)130 final]

Embed resilience and preparedness in the EU's external action (including on [climate change and environmental degradation](#), and [disaster risk reduction](#))



The Country Environmental Profile (CEP)

1. Summary
2. State of the env/cc trends and pressures
 - inputs to “analysis of the environmental/climate situation” in MIP
3. Environment/climate policy, regulatory and institutional framework
4. Integration of environment/climate concerns into key policies and sectors
5. EU and international funding from an environment/climate and green economy perspective
6. Conclusions and recommendations
 - to be considered in the design of the response strategy



Note: CEP can be updated to inform ongoing implementation - ahead of the MTR



Greening EU COOPERATION
Integrating environment & climate change

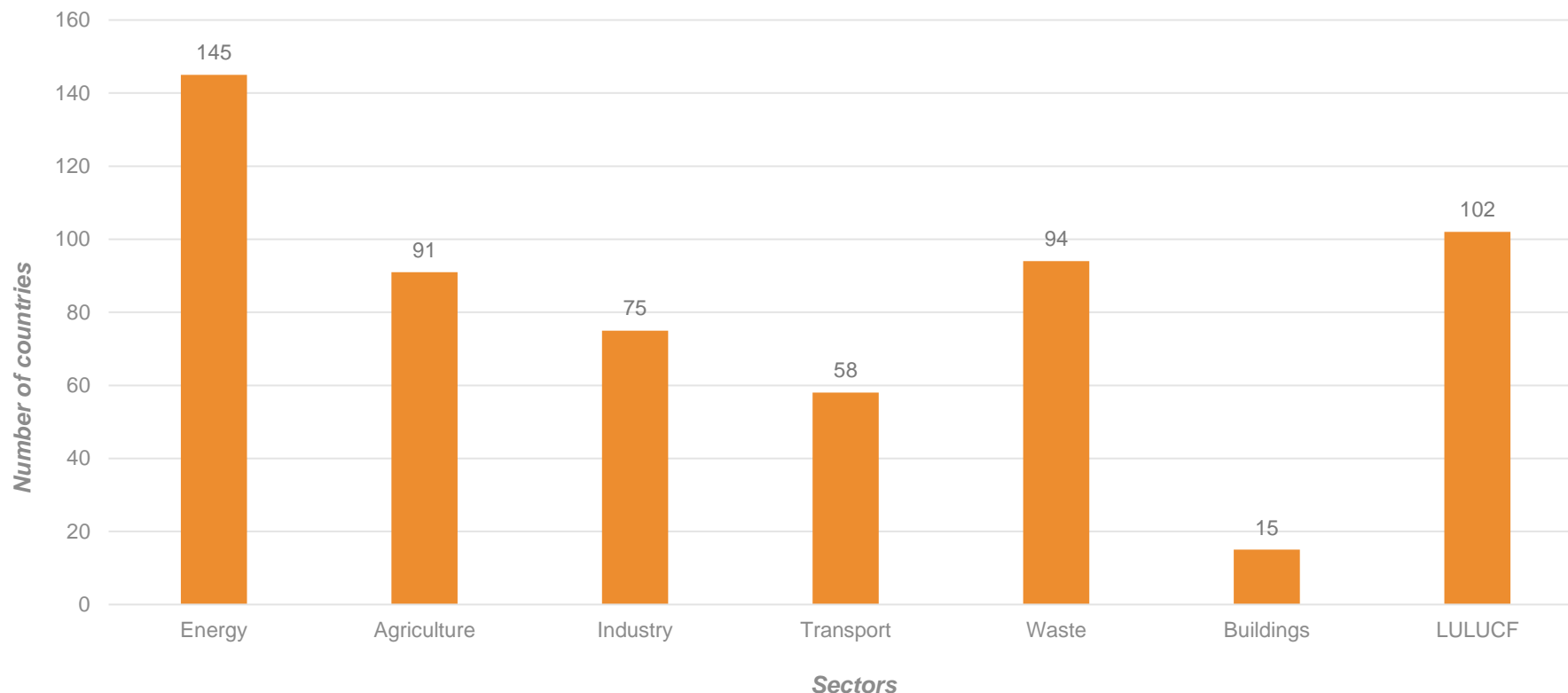


Resources to prepare a CEP

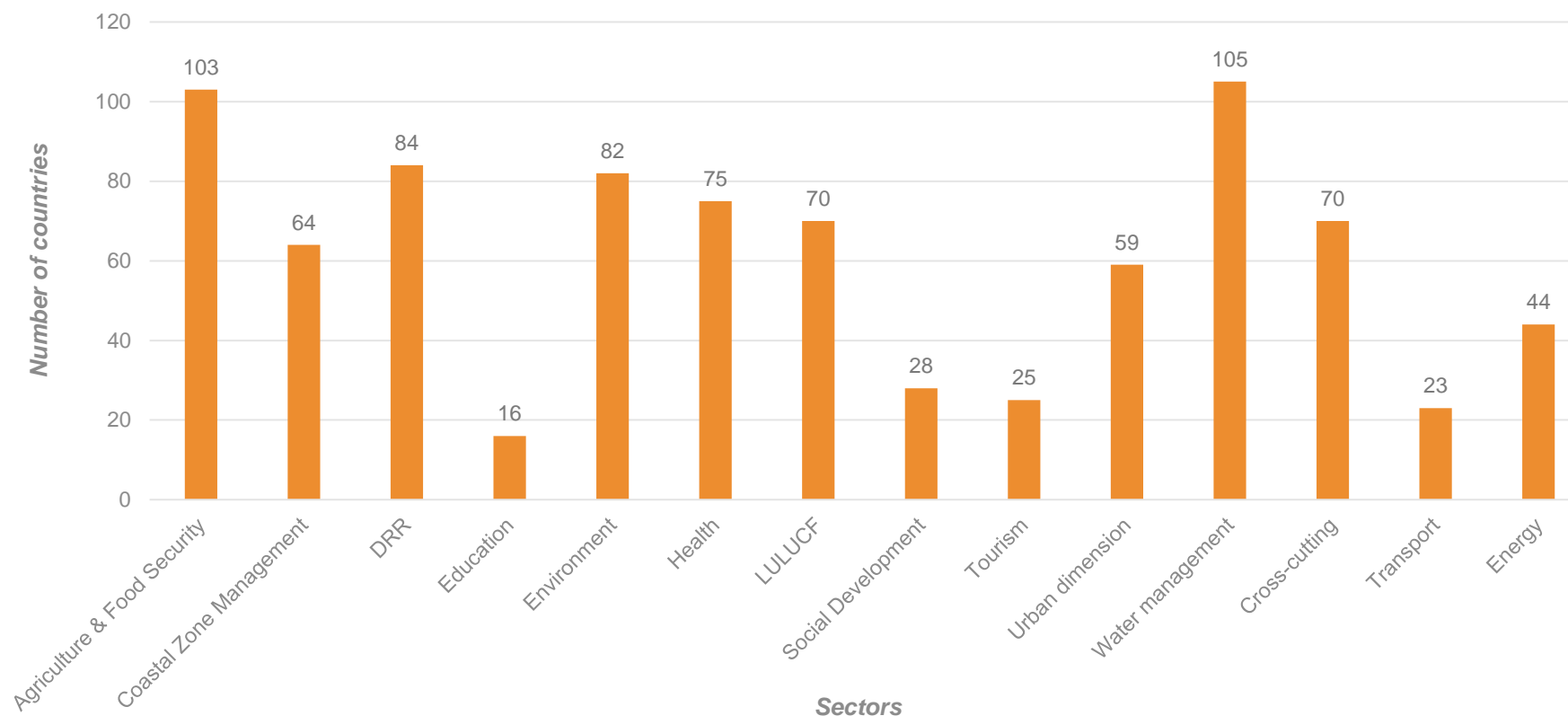
- Model ToR for a CEP - [Annex 3 of the Greening Toolbox](#)
- Repository of CEPs – available in capacity4dev ([group on Environment, Climate Change and Green Economy](#))



NDC alignment in programming – mitigation



NDC alignment in programming – adaptation



Risk Management Framework plus (RMF+)

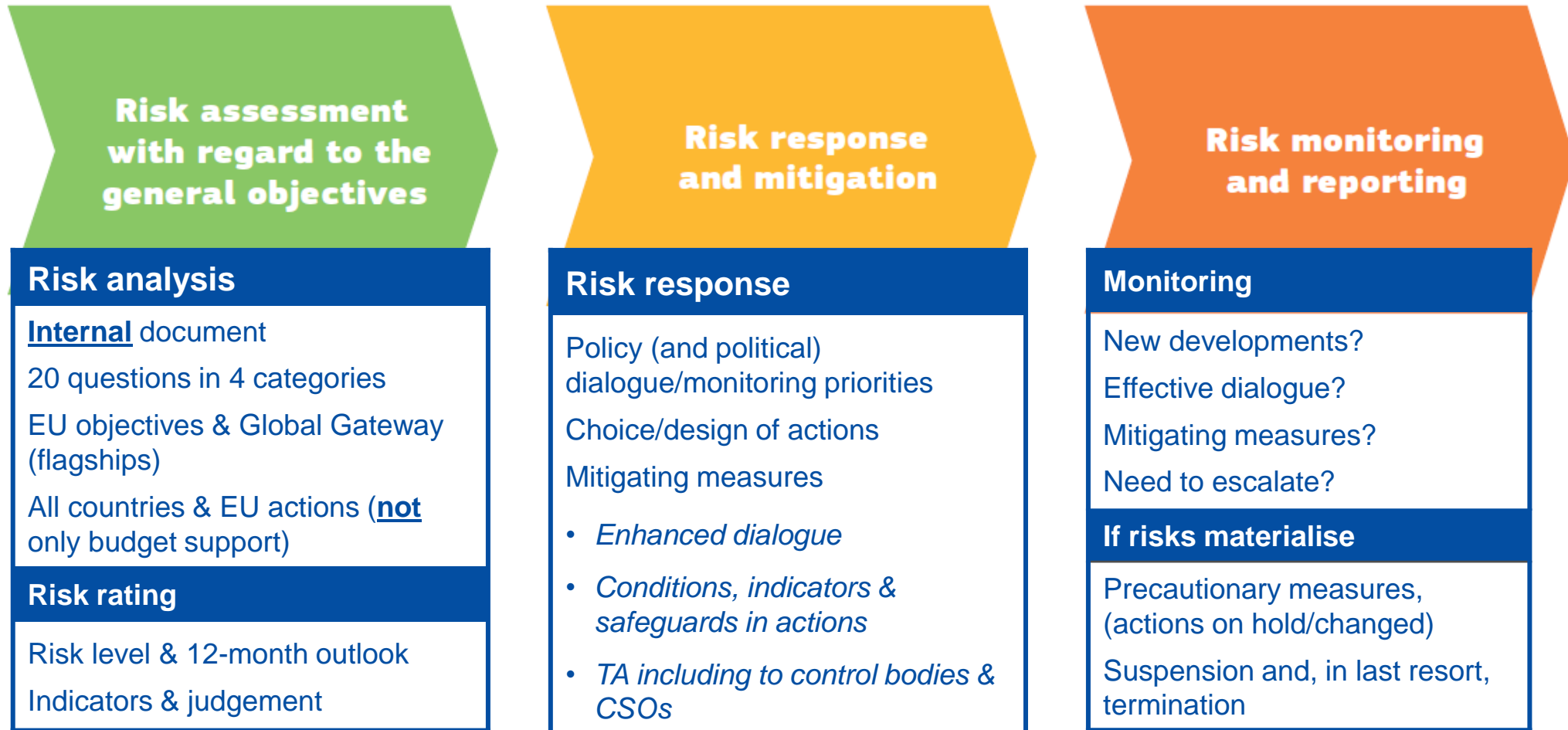
- Applicable to whole cycle of operations
- Rates/assesses structural/cyclical risks in the country
 1. Political system and corruption
 2. Sustainable growth and Jobs
 3. Sector policies
 4. Sustainable finance, public finance management, transparency and oversight
- All categories have links to env/cc

Risk profile per category and comparison with N-1

Country risks	Actual (N)	Previous (N-1)
CATEGORY 1 : POLITICAL SYSTEM, GOVERNANCE AND CORRUPTION	Substantial 3.20	Substantial 3.20
CATEGORY 2 : SUSTAINABLE AND INCLUSIVE GROWTH, FINANCE AND JOBS	Substantial 2.60	Moderate 2.40
CATEGORY 3 : KEY SECTOR POLICIES	Moderate 2.40	Moderate 2.40
CATEGORY 4 : PUBLIC ADMINISTRATION, PFM, TRANSPARENCY AND OVERSIGHT	Moderate 2.20	Moderate 2.20
Global (average)	Substantial 2.60	Substantial 2.55



Risk management framework plus



RMF+ / 4 categories & 20 questions



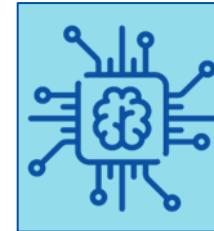
Political systems, governance & corruption

- ✓ HR & freedoms
- ✓ Discriminations
- ✓ Democracy & RoL
- ✓ Instability
- ✓ Corruption



Sustainable and inclusive growth, finance & jobs

- ✓ Macro stability & debt
- ✓ Sustainable growth
- ✓ Inclusive growth
- ✓ Business environment
- ✓ Financial sector



Key sector policies

- ✓ Human development
- ✓ Climate change & energy
- ✓ Environment & WASH
- ✓ Agrifood systems
- ✓ Migration



Public admin. PFM & transparency

- ✓ Public admin & stats
- ✓ Revenue
- ✓ Spending
- ✓ Proc. & public Inv.
- ✓ External audit

Greening the RMF+ - Annex 15 of the Greening Toolbox



RMF+ risk categories

- **Dimension 1.4. Instability, insecurity, conflict and violence, access to natural resources**
 - ❖ Ineffective policies to ensure inclusive, equal and secure **access to natural resources**, making it a source of conflict, instability, insecurity and/or migration and/or forced displacement
 - ❖ **Climate change and environmental degradation** multiplying risks of violence or conflicts
- **Dimension 2.2. Green and digital transitions, sustainable growth, resilience**
 - ❖ **Ineffective policies for a circular, climate-, nature- and biodiversity-smart transition and a sustainable growth path**
 - ❖ **Ineffective policies to address the vulnerability to natural hazards and extreme natural events linked to climate change**
- **Dimension 2.4. Business environment, sustainable trade and value chains, transport**
 - ❖ Business environment not conducive to sustainable and green foreign domestic investments and private sector development, job creation, sustainable economic growth and the **transition to a green economy**
 - ❖ Ineffective policies affecting **sustainable trade and value chains**, including transport and infrastructures
 - ❖ Negative impacts of private sector development and trade (e.g., land dispossession, **environmental degradation**, etc.)
- **Dimension 2.5. Sustainable financing, domestic financial system and capital markers**
 - ❖ Financial systems/practices **not supporting investments into environmental, climate** and socially responsible projects and not contributing to inclusive and sustainable growth



- **Dimension 3.1. Human capital, health and education**

- ❖ Deficit of human capital affecting negatively...the country's sustainable development ambitions and an enabling environment for innovation, inclusive economic growth, green and digital transitions, security, equality and climate change responses

- **Dimension 3.2. Climate change mitigation/adaptation and energy**

- ❖ Ineffective climate and disaster risk management policies to address climate change challenges, in both mitigation and adaptation
- ❖ Ineffective energy policies not effectively supporting a green transition of the economy

- **Dimension 3.3. Environment and natural resources, including water and sanitation**

- ❖ Ineffective environmental, natural resources, water and sanitation policies to address environmental threats and challenges for the country
- ❖ Ineffective environmental/natural resources governance affecting sustainable and equitable development

- **Dimension 3.4. Agriculture, food and nutrition security**

- ❖ Ineffective agricultural policies to ensure food security, environmental sustainability and climate resilience for all or part of its population
- ❖ Ineffective policies to support sustainable agricultural value chains and agricultural production for food security

- **Dimension 4.3. Budget execution, including controls, accounting, reporting and transparency**

- ❖ Insufficient efforts to apply gender-responsive and green budgeting

- **Dimension 4.4. Public procurement and investment**

- ❖ Public investment management processes not ensuring the selection and execution of projects with the highest economic, environmental and social returns including for gender equality and inclusion

