



Greening EU Cooperation

Integrating Environment, Climate Change and Disaster Risk
Reduction in EU External Action

Session 6: Strategic Environmental Assessment (SEA)

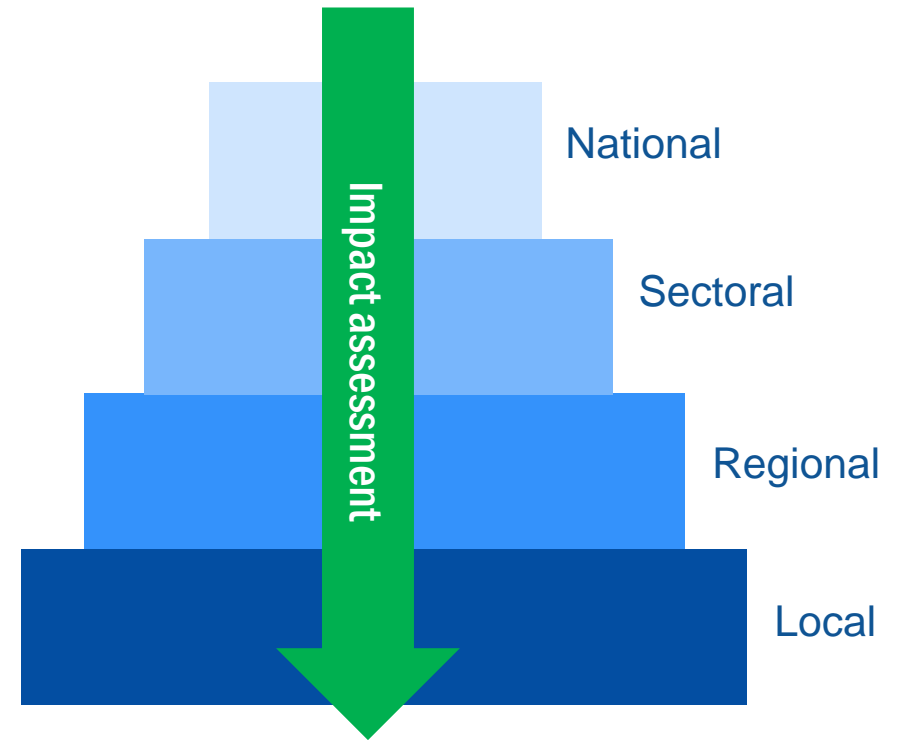
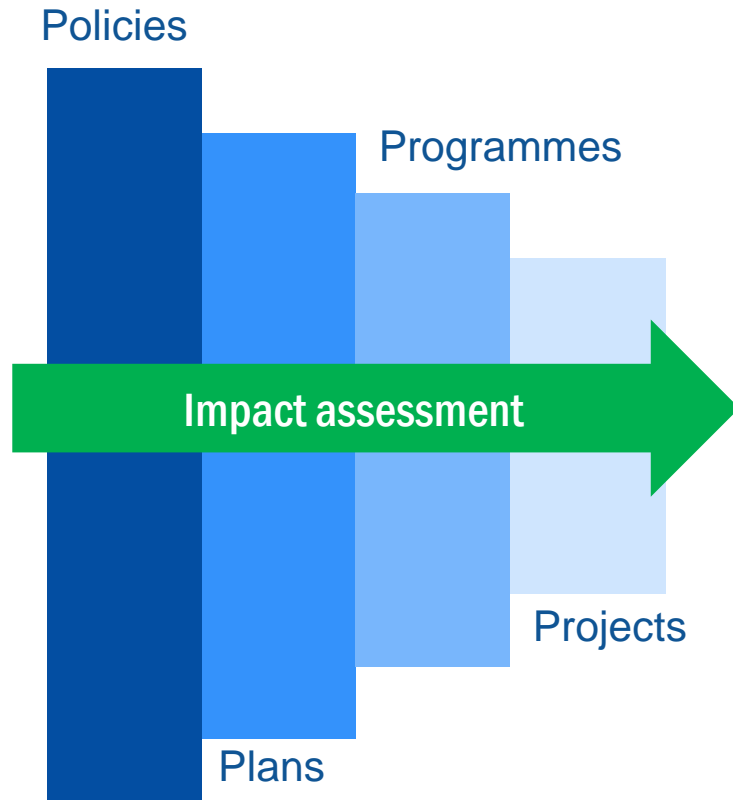
Strategic Environmental Assessment

“the **process** and tool for evaluating effects of proposed policies, plans and programmes on natural resources, social, cultural and economic conditions and the institutional environment in which decisions are made”

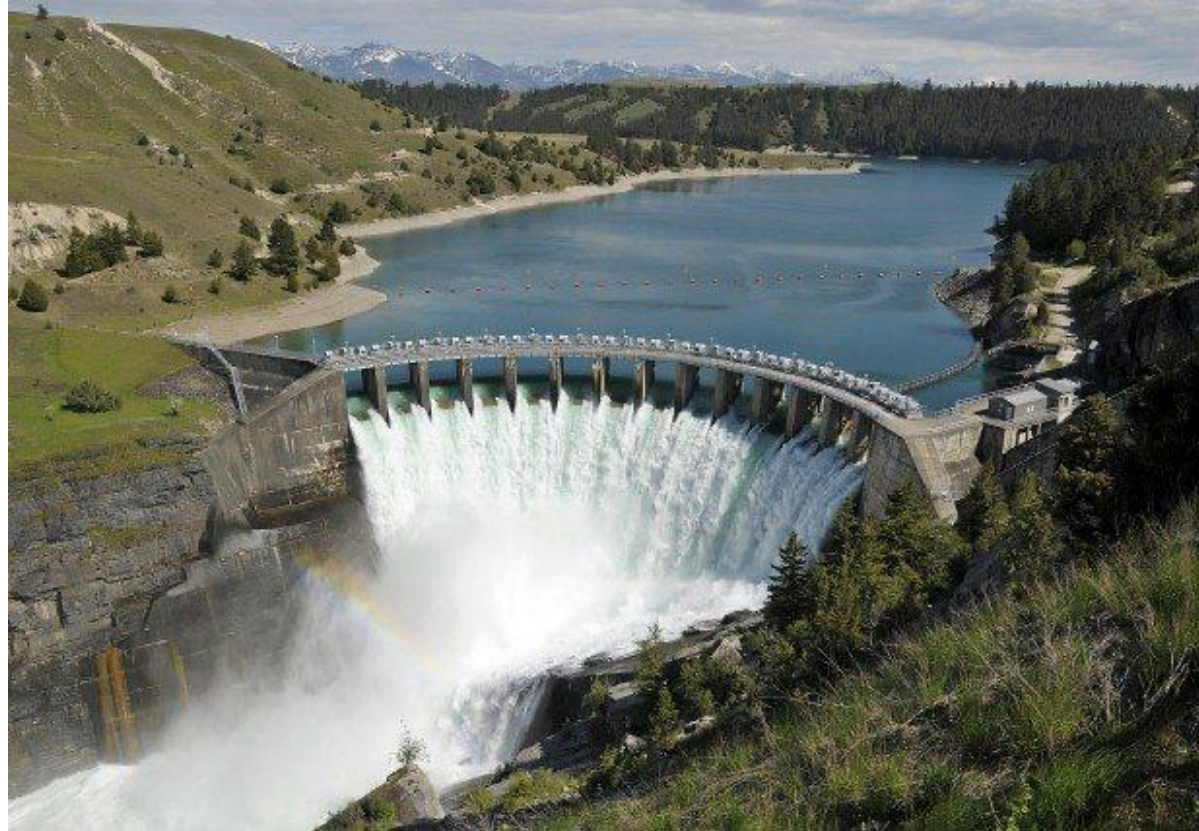
IAIA (International Association for Impact Assessment)



Tiering approach



EIA: we know what we want to assess



Greening EU COOPERATION
Integrating environment & climate change





*SEA: we have an idea
of what we want, but
don't know exactly
what will be done*

SEA vis-à-vis EIA

EIA	SEA
Project-level	Policies, plans & programmes
Focus on informing development consent authorisation process	Focus on enhancing policy-making/planning process
Relatively standard approach	Different approaches available
Quantitative analyses dominate	Qualitative analyses dominate
Analyses alternatives within a project	Analyses alternatives to achieve strategic objectives



SEA approach

Common to SEA systems:

What are the **likely environmental consequences** of implementing the policy/plan/programme?



Greening EU COOPERATION
Integrating environment & climate change



European
Commission

Our approach to SEA

Also addressed:

Are the **environmental** threats faced by the sector being addressed?

Are the **potential effects of climate change** on the sector taken into account?

On the proposed actions?



Our approach to SEA

Also addressed in EU cooperation:

Are there **opportunities** to enhance:

- Environmental sustainability?
- Low carbon development?
- Climate resilient development?

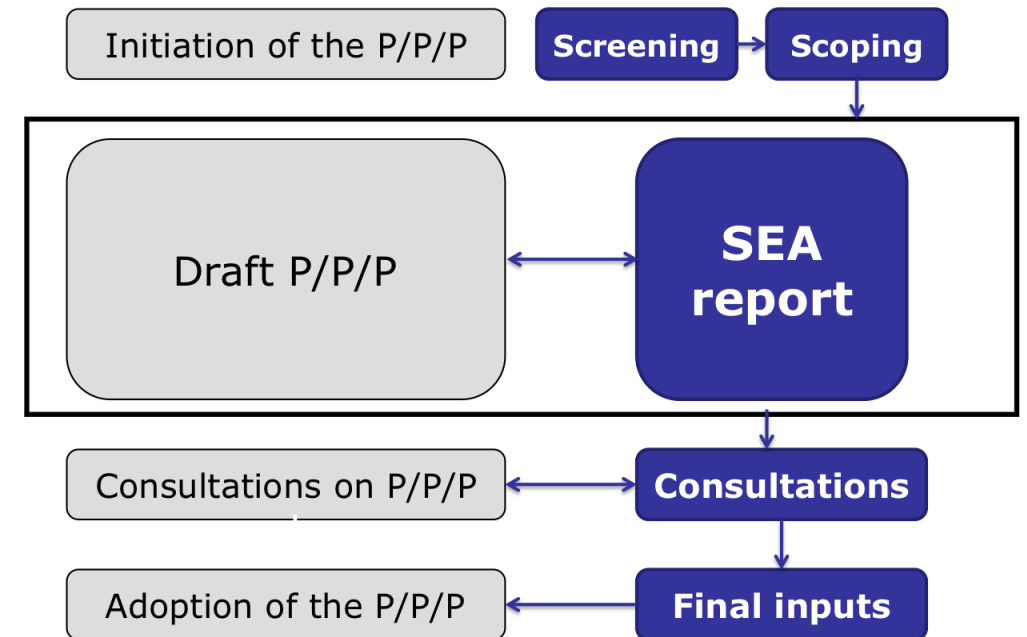
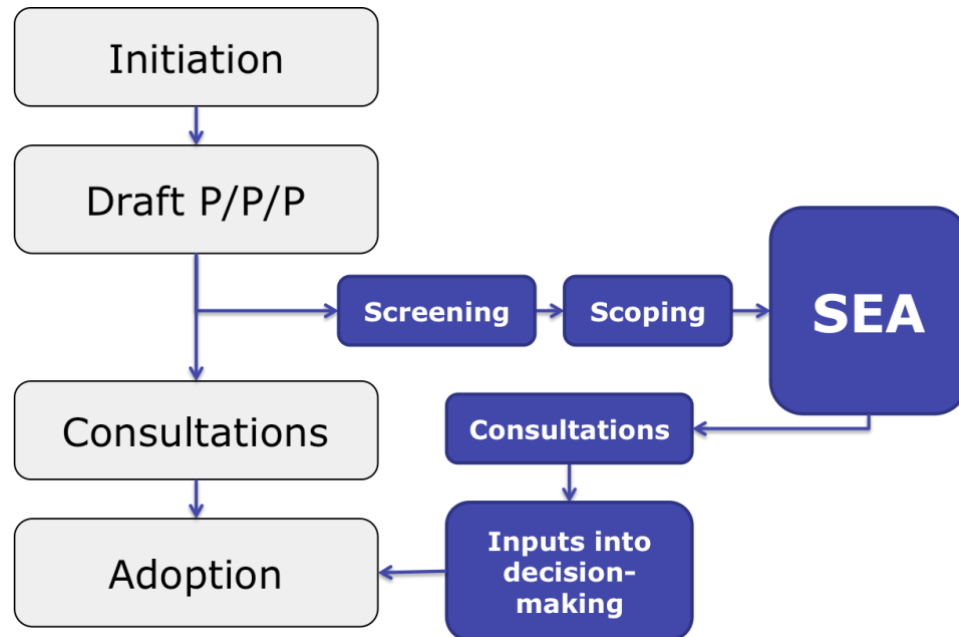


Greening EU COOPERATION
Integrating environment & climate change



Approaches to SEA

Based on **draft** PPP vs in **parallel** to PPP
elaboration vs **fully integrated**



SEA and climate change

- **Strategic planning:**
medium- to long-term
- **Climate change** is
fundamental



When can SEA be useful?

- ✓ When providing **budget support** to an environmentally-sensitive sector
 - To assess budget support **eligibility criteria**
 - To inform the budget support **programme preparation**
 - To identify performance **indicators**
- ✓ When providing broad **strategic-level support**
- ✓ When supporting sectoral **policy-making and planning processes**



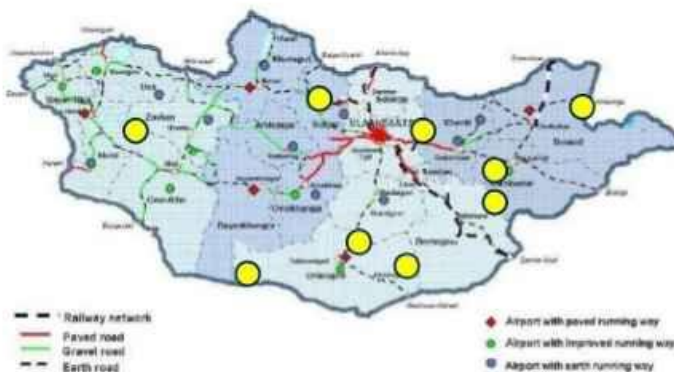
SEA in the context of the Global Gateway



Mongolia Mining Supply Chain

REALITIES OF MINING TODAY

- Most of largest deposits are located in remote areas
- Poor infrastructure development



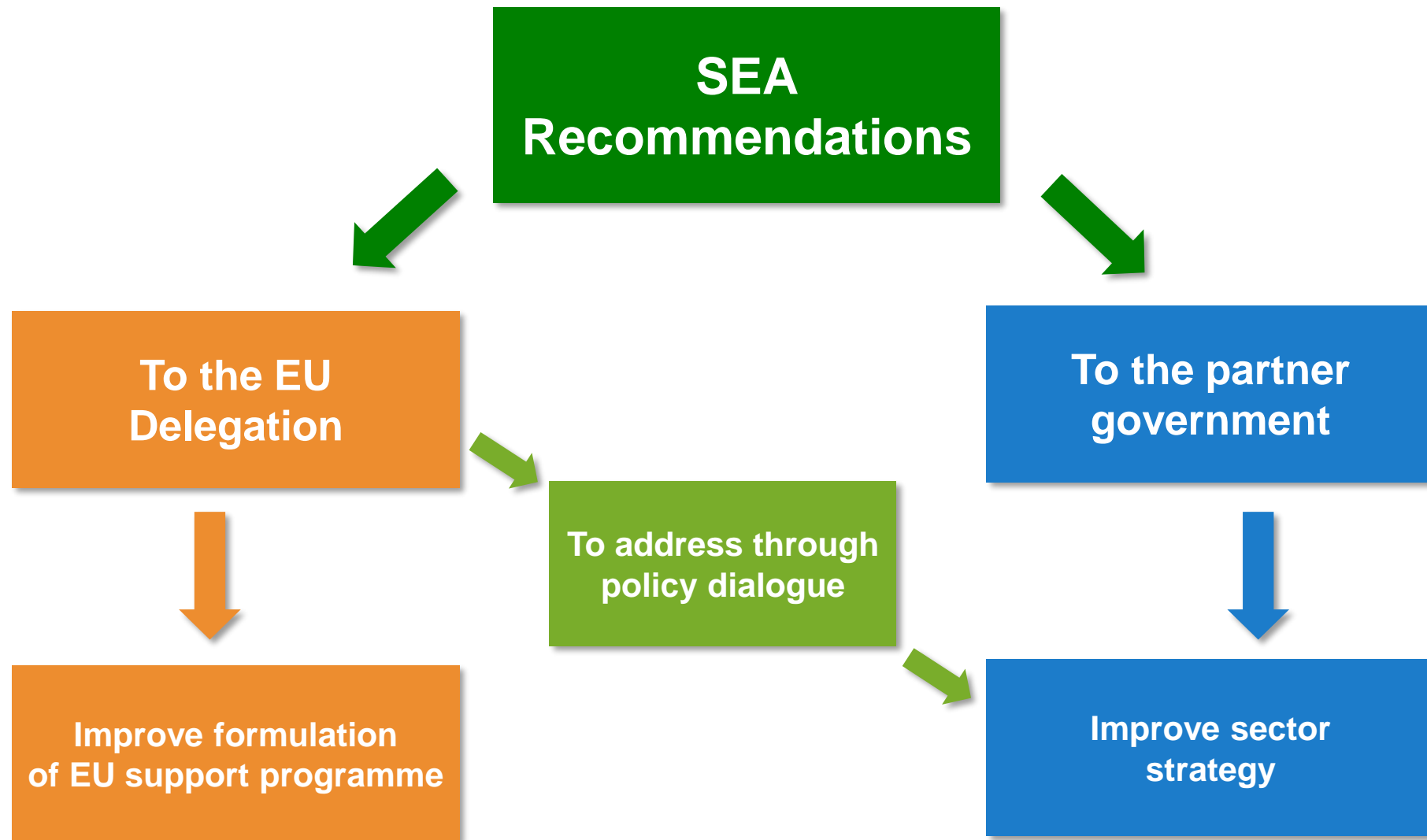
Green & Clean Principle

...Projects will live up to the European Green Deal oath to ‘do no harm’ and ensure the use of environmental impact assessments **and strategic environmental assessments**”.

Support national partners integrate env/cc in strategic planning, e.g. for:

CRM, transport, agriculture





Example: SEA of Zambia's sugar adaptation strategy

- Introduction of new industrial sector: ethanol distilling
- Potential impacts: vinasse management
- Addressing risks at strategic level: strengthening capacities of the environmental protection agency



SEA of Rwanda's agriculture sector strategy – seizing opportunities

- Recommendations on soil & water conservation and soil acidity informed performance targets on agro-forestry, reduction of soil acidity in areas of public investment...
- SEA was reference for design of feeder roads development policy and strategy.
- Findings on soil nutrient management informed GoR's review of inputs subsidy scheme and recommendations for pest and disease management to be promoted.



SEA of Montenegro's climate change strategy – enabling opportunities



Potential contribution to air quality and improved health: co-generation from thermal power plant / reduced burning of coal in households

Key issues: how to ensure positive contributions would materialise?



Greening Toolbox resources

Home Systems e-Learnings Manuals News Support eCompanion ICM Guide ePRAG

European Commission > ... > IV. Annexes

Annex 6. Model terms of reference for a Strategic Environmental Assessment

IV. Annexes

- Annex 1. Greening EU cooperation tools
- Annex 2. Aid to environment, DRR and Rio markers
- Annex 3. Model terms of reference for a Country Environmental Profile
- Annex 4. Environment and climate risk screening
- Annex 5. Sources to understand the environment and climate context
- Annex 6. Model terms of reference for a Strategic Environmental Assessment**
- Annex 7. Model terms of reference for an Environmental Impact Assessment
- Annex 8. Model terms of reference for a Climate Risk Assessment
- Annex 9. Green and greening

Annex 6. Model terms of reference for a Strategic Environmental Assessment

Terms of Reference for the Strategic Environmental Assessment of (name of the strategic/planning document and/or EU support programme) in (country/region)

Annex 6. Model ToR for an SEA

- Online and .doc versions



European
Commission

Greening Toolbox resources

Guide

✓ Greening EU Cooperation Toolbox

- [Acronyms and abbreviations](#)
- [I. Introduction](#)
- [II. Greening in practice](#)
- [III. Guidance and support](#)
- ✓ [IV. Annexes](#)
 - **Annex 1. Greening EU cooperation tools**
 - [Annex 2. Aid to environment, DRR and Rio markers](#)
 - [Annex 3. Model terms of reference for a Country Environmental Profile](#)
 - [Annex 4. Environment and climate risk screening](#)
 - [Annex 5. Sources to understand the environment and climate context](#)

What guidance and support material are available?

Model ToR for an SEA are available in [Annex 6](#). The ToR must be tailored to the specific context in which the SEA will take place.

The [SEA booklet](#) 'Strategic Environmental Assessment in EU development Cooperation. A handful of tips to get it right!' provides practical advice to EU Delegations in the preparation and management of an SEA process.



A [compilation of SEAs](#) in the context of EU cooperation can be found in capacity4dev.

Support in relation to SEA can be obtained from the Greening Facility for INTPA and NEAR:

✉ INTPA-GREENING-FACILITY@ec.europa.eu

✉ NEAR-GREENING-FACILITY@europa.eu

- [Compilation of SEAs](#)
- [SEA Booklet](#)



Greening EU COOPERATION
Integrating environment & climate change



Practical tips to get an SEA right!



Greening EU COOPERATION
Integrating environment & climate change





Tip 1: Be clear on whether you need an SEA

The “user” has to be convinced that an SEA will be a useful way to enhance then environmental sustainability and climate resilience of its support programme

The **screening** process is just an aid – the final decision has to be practical



Attention: imposed SEAs!



Tip 2: Put the Government in the driving seat

SEA is most effective when “owned” and led by the partner Government, with support from the EU

- ! Approach the Government at an early stage
- ! Reach a common understanding on the approach and what is expected from the SEA
- ! Decide on the scope jointly



Tip 3: Get the timing right

Start as early as possible – even from the programming phase we can have an idea if an SEA will be useful



Government and EU planning cycles do not always match

Even “late” SEAs can be useful, if there is a will to enhance support programmes



Tip 4: Coordinate with other development partners

Be efficient, make sure the SEA will benefit everyone

Don't duplicate efforts!



Tip 5: Be clear on what you expect from the SEA, get the ToR right

The Toolbox provides indicative ToR, but this is only a starting point!

Ensure you capture concerns of the Government and other donors

Be realistic and focus on what is really important

Don't be too prescriptive (let scoping do its job)



Copy-pasting ToR



Tip 6: Mind climate change

SEA is about planning that looks into the future – but, **with climate change, the future is no longer what it used to be!**

SEA should examine how climate change affects feasibility of a strategy and assist in building resilience



It can also identify opportunities to contribute to low carbon development



Tip 7: Select the right team

The Team Leader should be well acquainted with SEA

Other team members will fill in sector- and issue-specific expertise

Remember that SEA and EIA require a different approach



Good EIA expertise is no guarantee of good performance in an SEA!



Tip 8: Give due attention to scoping

Scoping is a critical phase to draw boundaries and fine-tune the approach

- Allow for participation
- Provide for a two-phase approach
- Allow time to make sense of the findings of the scoping phase
- Be flexible to accommodate changes



It can be tempting to try to address everything... but you can spread out too thin



Tip 9: Ensure transparency and broad participation

- Provide meaningful participation opportunities
- Ensure transparency
- Generation of debate is often a key contribution!
- SEA workshops are excellent opportunities for different actors to discuss themes of common interest



Innovative ways to engage stakeholders can lead to more fruitful debate!



Tip 10: Ensure recommendations are focused and discussed

Recommendations must be focused relevant realistic. Keep them at a strategic level!

Prioritise who/how to address them!

Discuss findings and agree on a way forward
– both w/Government and in EU



Sometimes the best solution is in the hands of a different authority – make use of policy dialogue!



Extra Tip: Think strategically! **Promote a national SEA system**

The most effective way for SEA to influence national policy-making/planning

Guarantees ownership

The starting point for the EU can be a well-integrated strategy