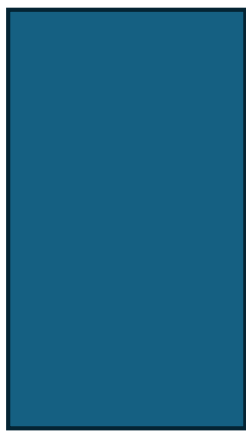


Unlocking Inclusive Growth: Human Settlement Investment along the Lobito Corridor



The project is funded
by the European Union



Urban Development Technical Facility Project
NDICI CHALLENGE/2022/436-490



Presentation Outline:

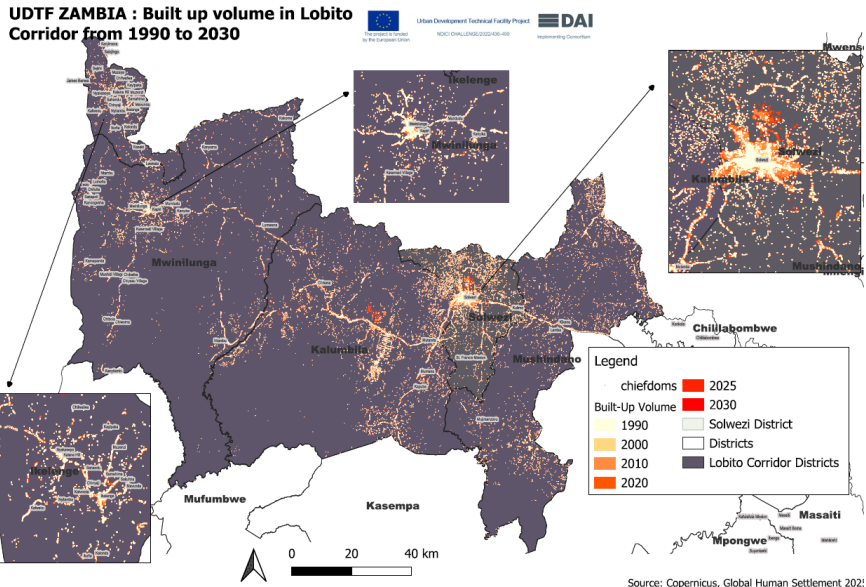
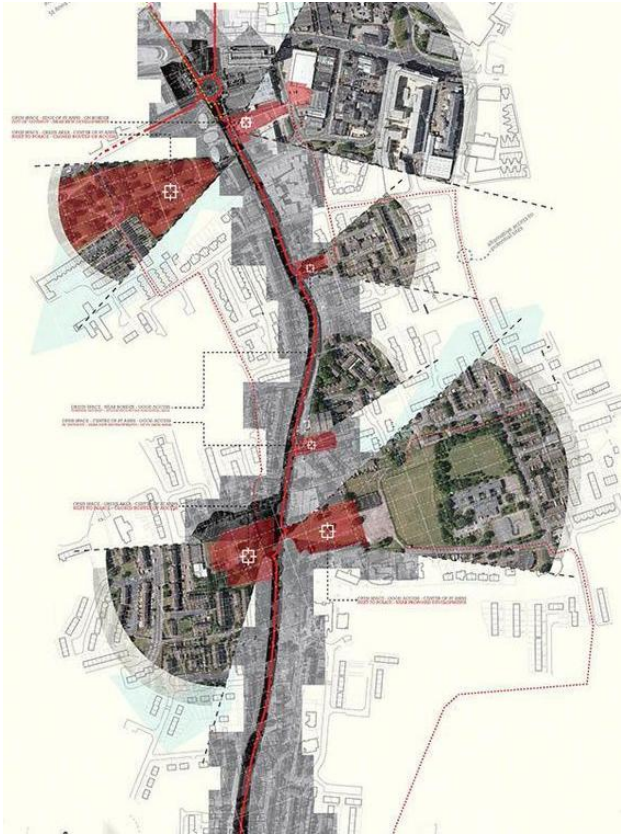
- Introduction
- Current State of Human Settlements
- Vision and Opportunities (Mushindamo, Solwezi, Kalumbila, Mwinilunga, Ikelenge)
- Overview of Investment Packages
- Government Support and Facilitation
- Benefits to Human Settlements
- International Precedents and Case Study
- Call to Action and Conclusion



Urban Development Technical Facility Project
NDICI CHALLENGE/2022/436-490



Introduction



Urban Development Technical Facility Project
NDICI CHALLENGE/2022/436-490

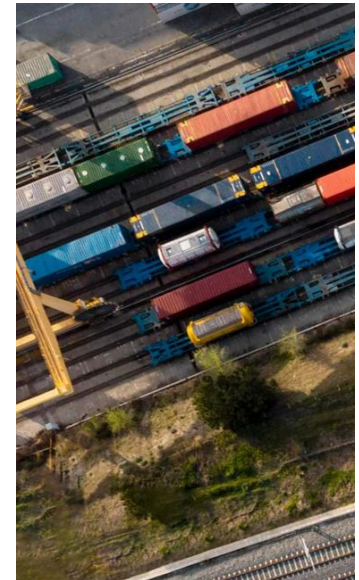


The Lobito Corridor – More Than Infrastructure

Unlocking the Corridor's Full Potential Requires Thriving human settlements

- The Lobito Corridor connects Zambia, Angola, and the DRC to global markets—but its success depends on **the vitality of the urban systems it connects**.
- **Functioning cities are the engines of productivity, service delivery, and innovation.** They absorb migration, host industries, and anchor trade (if the right conditions are met).
- Without well-planned, inclusive, and resilient urban settlements, the corridor risks becoming a transit route rather than a development catalyst.

The Opportunity: “We are building more than a railway; more than a road; more than a pipeline; we are building a vibrant economic corridor with thriving human settlements that need services, expertise, and investment”



The project is funded
by the European Union



Implementing Consortium

Urban Development Technical Facility Project

NDICI CHALLENGE/2022/436-490



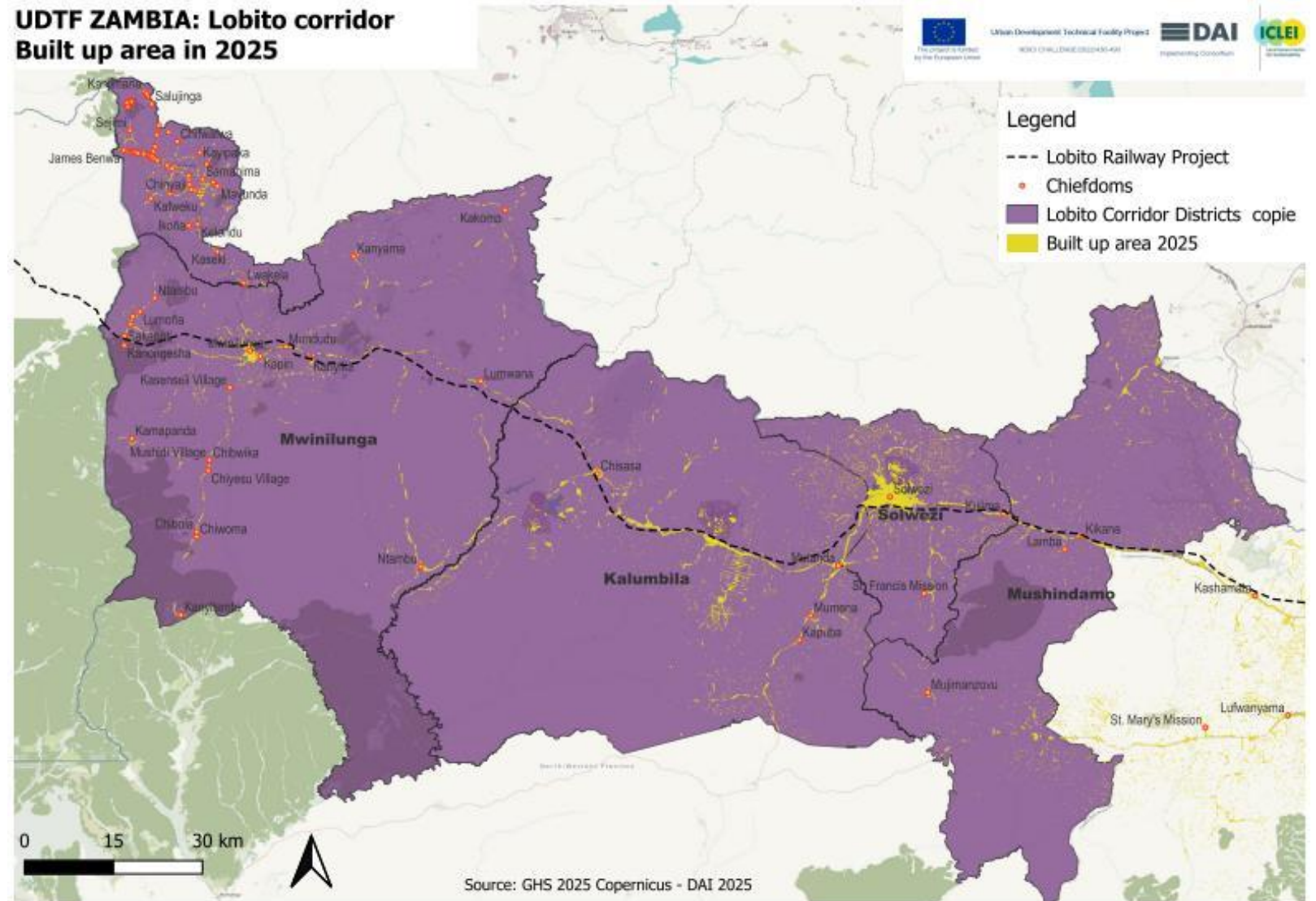
Local Governments
for Sustainability



The Lobito Corridor – More Than Infrastructure

- The corridor settlements represent not just an infrastructure line, but a huge area of influence

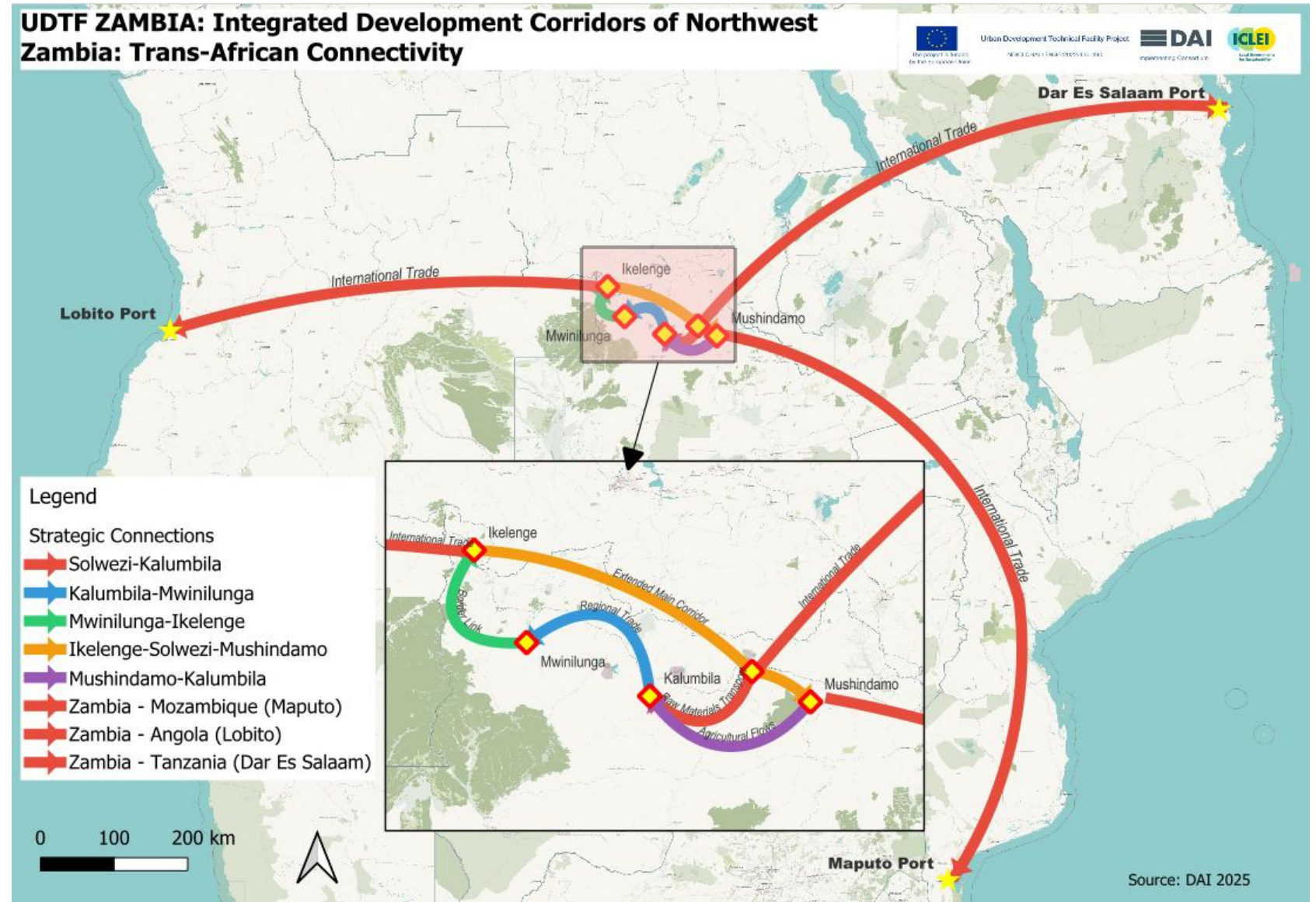
The Opportunity: “We are building more than a railway; more than a road; more than a pipeline; we are building a vibrant economic corridor with thriving human settlements that need your services, expertise, and investment”



The Lobito Corridor – More Than Infrastructure

- The corridor goes beyond national and regional, but has a global reach.

“Zambia is not a land-locked country, it’s a land-linked country.”

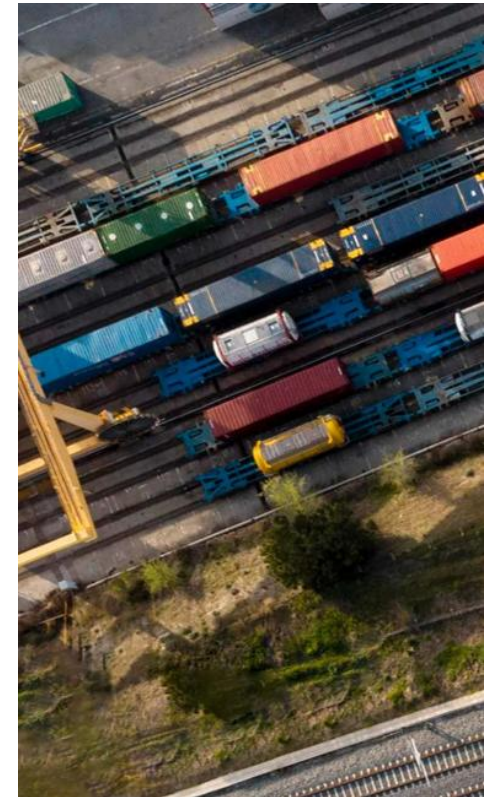


Cities as Strategic Enablers of Corridor Development

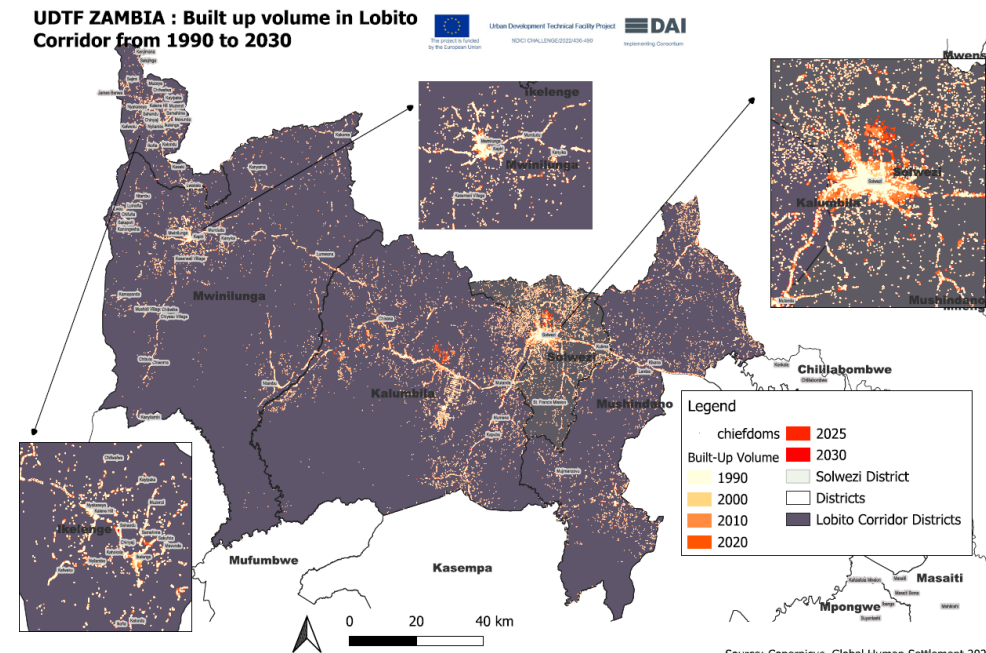
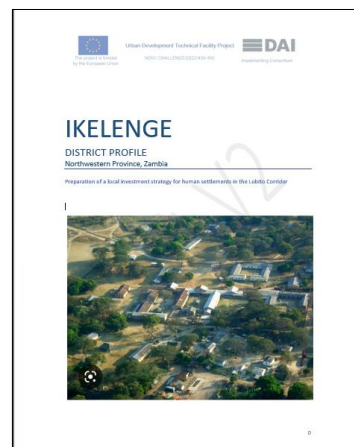
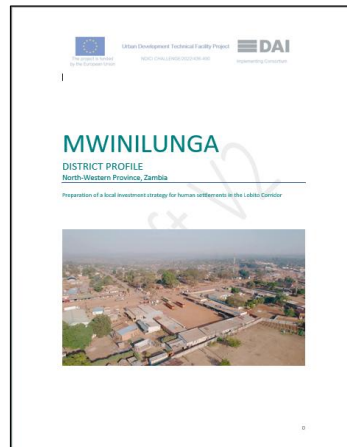
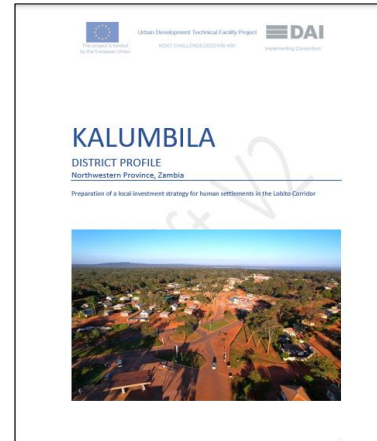
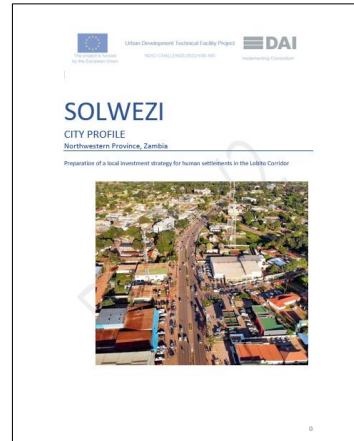
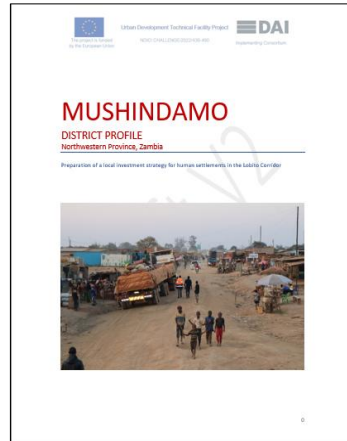
Why Human Settlements Matter for Corridor Success

- Cities provide housing, services, and governance for corridor-linked sectors like mining, agriculture, and logistics.
- They host markets, social infrastructure, and planning platforms essential for inclusive growth.
- Urban dysfunction—like informal sprawl and weak infrastructure—can derail corridor investments.
- Investing in well-functioning cities ensures efficient logistics, reduced inequality, and climate resilience.

“The corridor must be seen as a network of urban and rural settlements—not just a transport route”.



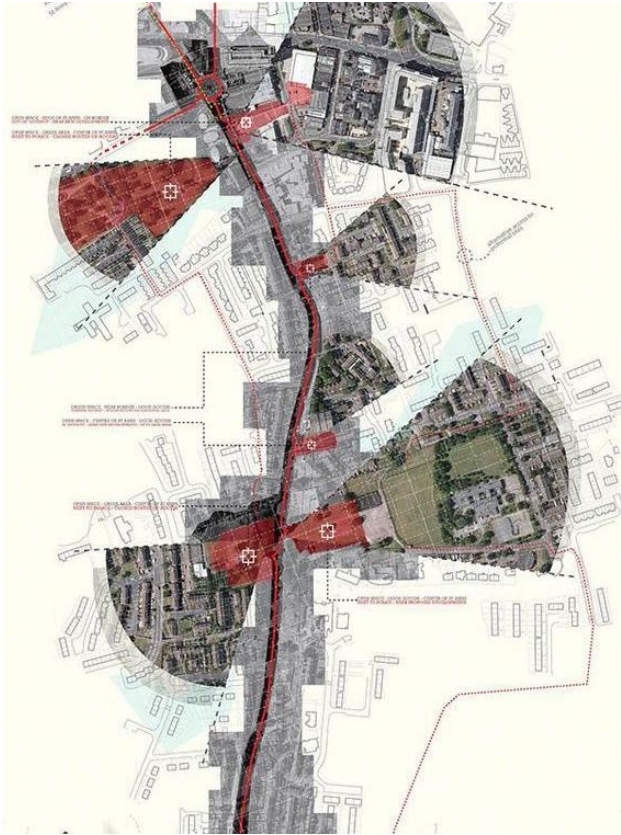
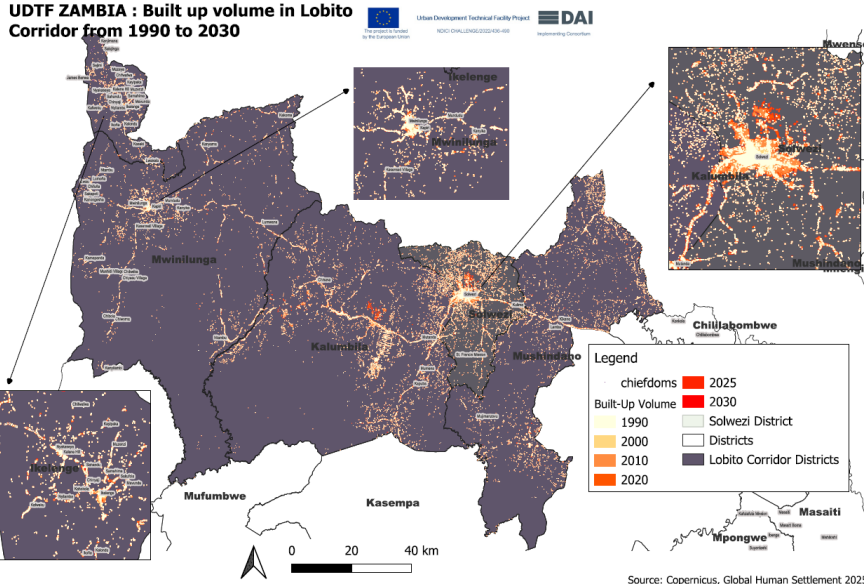
District Profiles



Urban Development Technical Facility Project
NDICI CHALLENGE/2022/436-490



Current State of Human Settlements



The project is funded
by the European Union

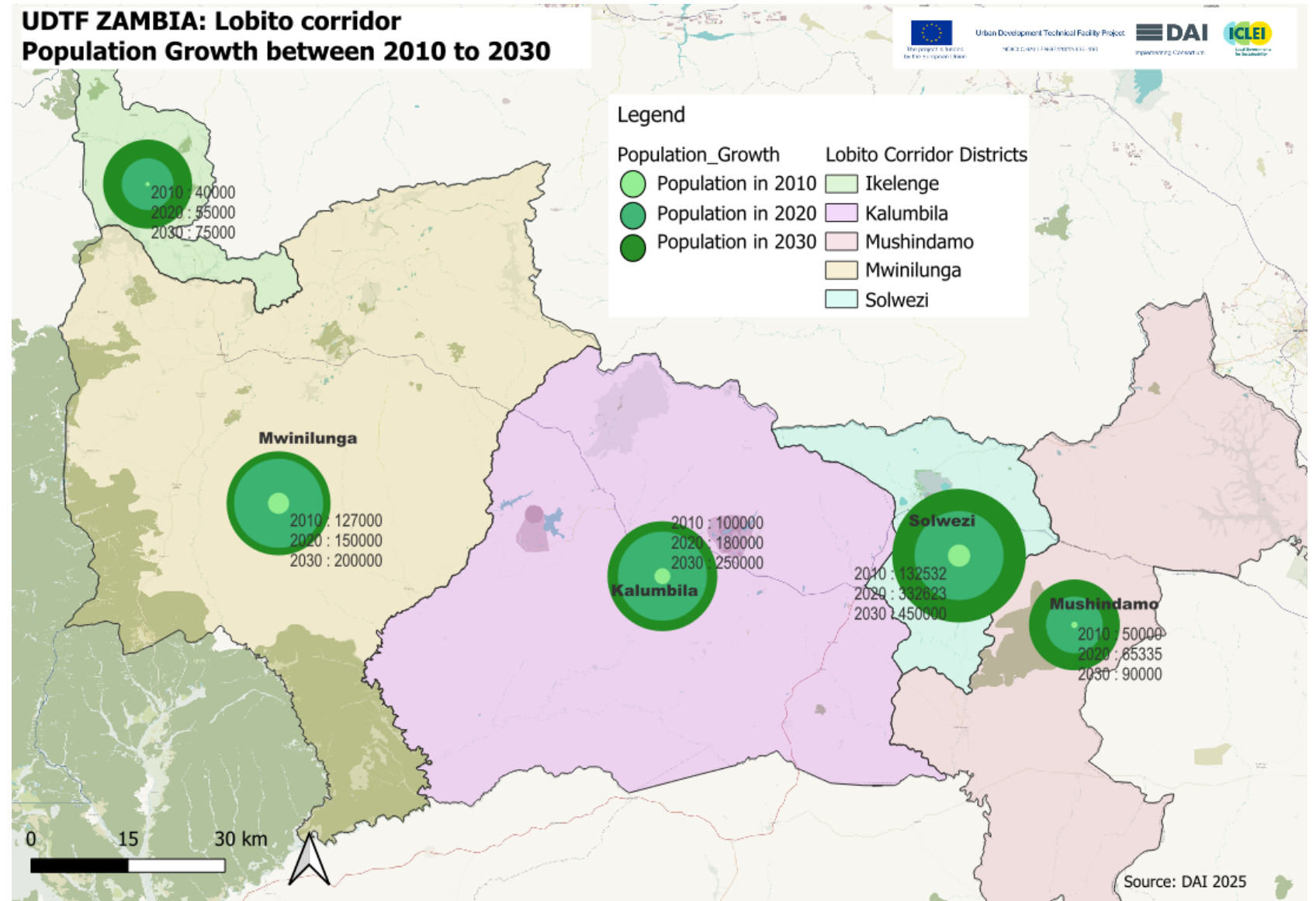


Urban Development Technical Facility Project
NDICI CHALLENGE/2022/436-490



Demographic Momentum – Population Growth Across the Corridor

A Rapidly Expanding Urban Frontier Demands Strategic Investment

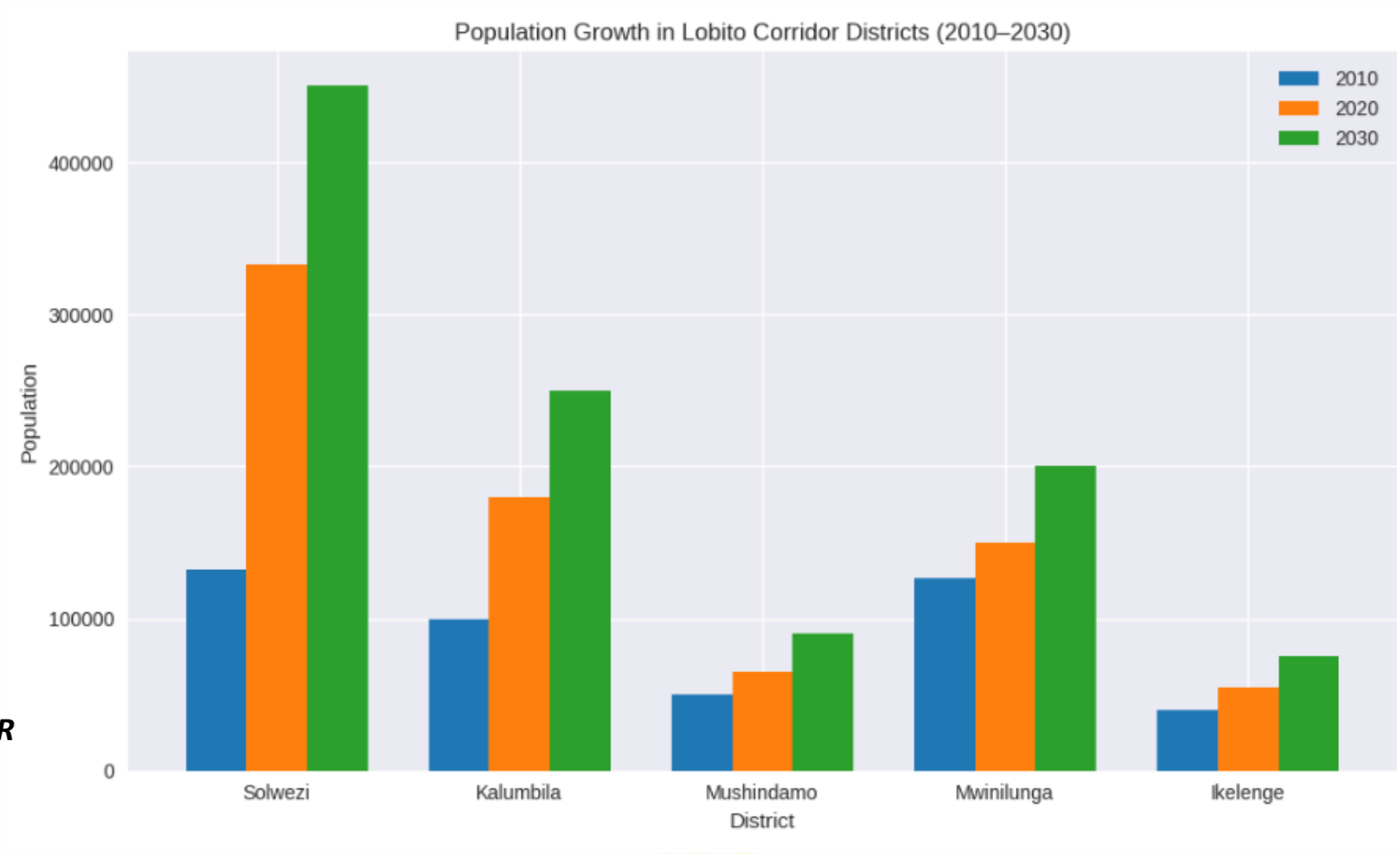


Demographic Momentum – Population Growth Across the Corridor

A Rapidly Expanding Urban Frontier Demands Strategic Investment

District	2010 Estimate	2020 Estimate	2030 Projection	Growth 2010–2020 (%)	CAGR per year (2010–2020)	Growth Driver
Solwezi	132,532	332,623	~450,000+	+151 %	+9.7 %/year	Mining, migration, logistics
Kalumbila	~100,000	~180,000	~250,000+	+80 %	+6.1 %/year	Mining, agro-processing
Mushindamo	~50,000	65,335	~90,000+	+30.7 %	+2.7 %/year	Agriculture, border economy
Mwinilunga	~127,000	~150,000	~200,000+	+18.1 %	+1.7 %/year	Trade, agriculture
Ikelenge	~40,000	~55,000	~75,000+	+37.5 %	+3.2 %/year	Energy, border gateway
Total Corridor	~449,500	~782,958	~1.1–1.3M			—

Estimated Annual Growth Rate (2010–2020) ≈ 5.7% CAGR across the corridor

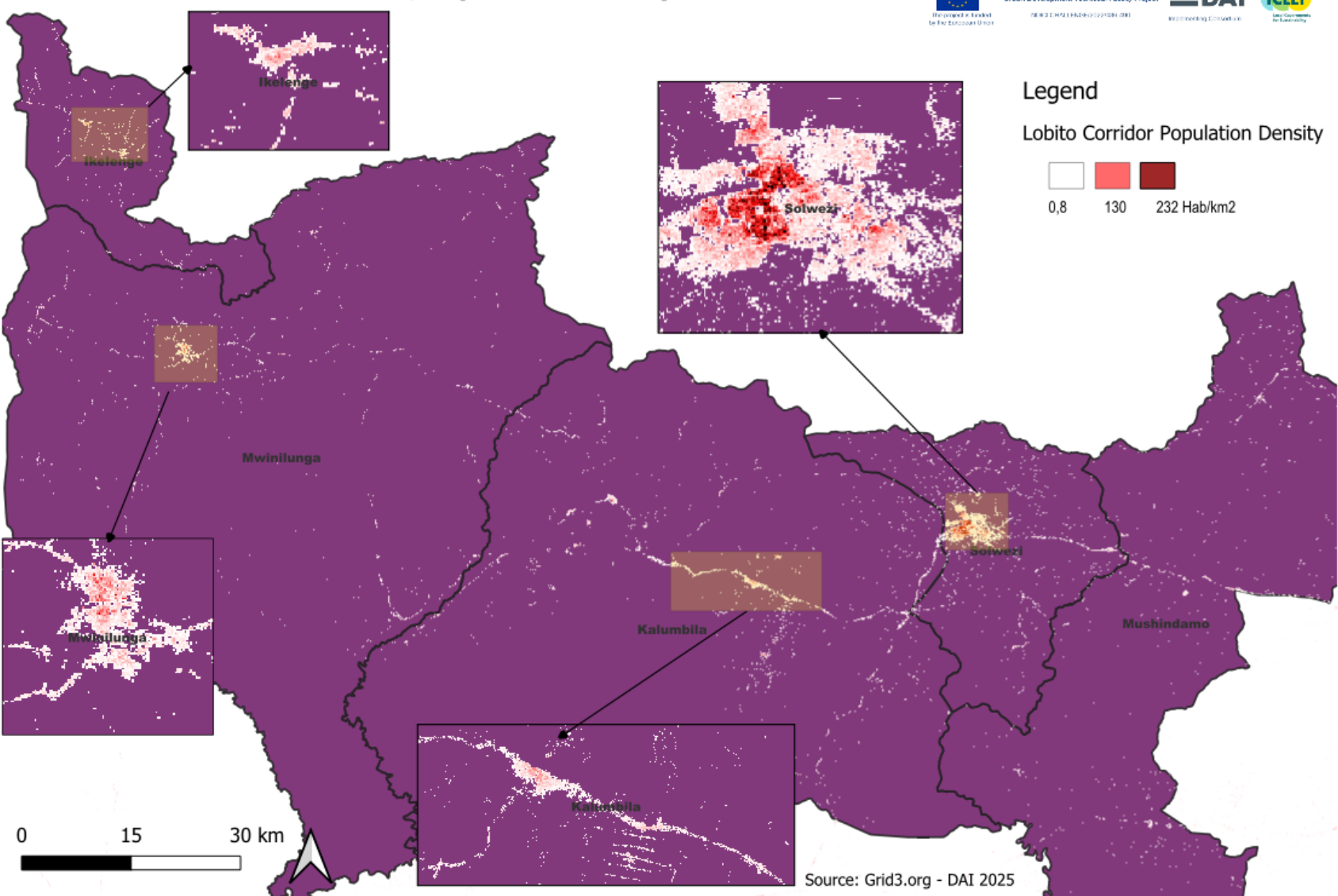


Demographic Momentum – Population Growth Across the Corridor

A Rapidly Expanding Urban Frontier Demands Strategic Investment



UDTF ZAMBIA: Lobito Corridor, Population Density 2022



Current State of Human Settlements

Summary of Key Issues (Opportunities not Challenges)- I

- **Governance gaps:** Weak coordination between customary and statutory authorities, limited district capacity, outdated development plans.
- **Unplanned growth:** Informal expansion into sensitive areas; insecure land tenure.
- **Housing deficits:** Prevalence of informal settlements; lack of affordable, climate-resilient options.
- **Land fragmentation:** Overlapping customary and statutory systems causing tenure insecurity, investment delays, and disputes—undermining planning for rapid population growth.
- **Infrastructure strain:** Inadequate water, sanitation, electricity, and waste services.

**“The Urban Opportunity:
Enabling Transformative and Sustainable Development”.**



Current State of Human Settlements

Summary of Key Issues (Opportunities not Challenges)- II

- **Overloaded social services:** Schools and clinics under pressure from rapid population growth.
- **Narrow economic base:** Mining dominates; weak links to agriculture, tourism, and SMEs.
- **Poor connectivity:** Limited road, rail, and air infrastructure; weak logistics integration.
- **Environmental risks:** Deforestation, pollution, and climate vulnerability.
- **Social exclusion:** Youth unemployment, gender inequality, and limited vocational training.

**“The Urban Opportunity:
Enabling Transformative and Sustainable Development”.**



Why Invest in Human Settlements Along the Lobito Corridor?

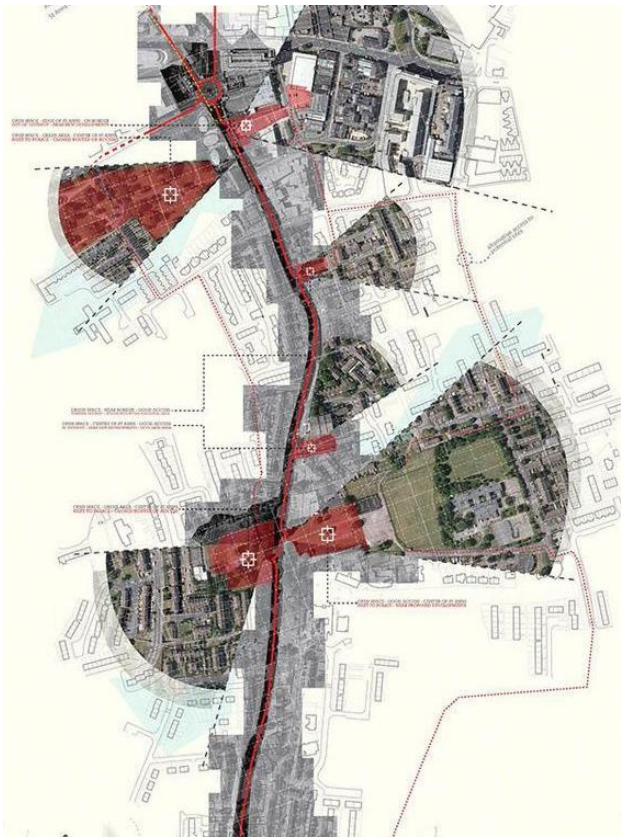
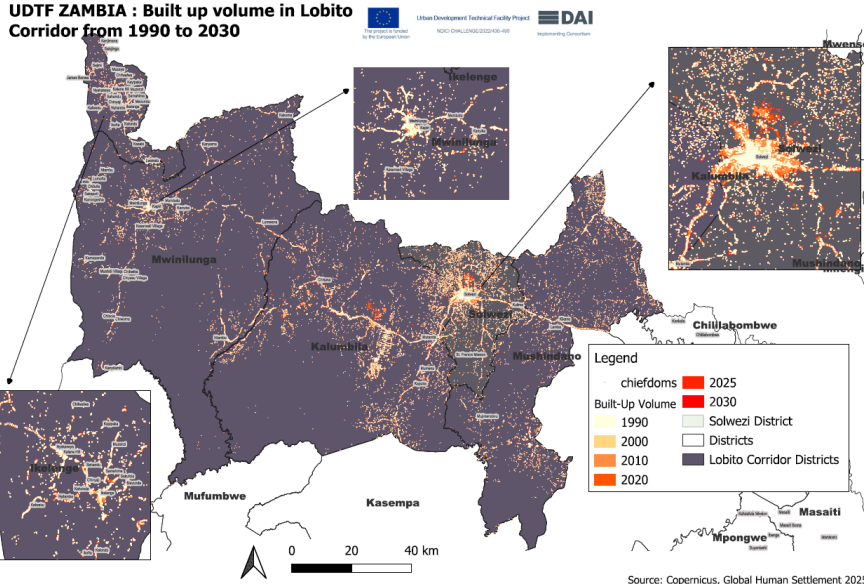
A Strategic Moment to Shape the Future

- **Strategic corridor:** Key trade route linking Zambia to Angola, DRC, and global markets.
- **Emerging hubs:** Rapidly growing towns offer platforms for logistics, mining, and services.
- **Diversification potential:** Unlocks value chains in agriculture, tourism, SMEs, and agro-processing.
- **Inclusive growth:** Cities can reduce inequality and empower women, youth, and informal workers.
- **Youthful population:** Growing labor force and consumer base—if matched with jobs and services.

“The Urban Opportunity: Enabling Transformative and Sustainable Development” .
Demographic Dividend: Rapid population growth—especially among youth—offers a dynamic labor force and consumer base **if** matched with housing, services, and jobs.



Vision and Opportunities



Urban Development Technical Facility Project
NDICI CHALLENGE/2022/436-490



Why Now? The Window of Opportunity Is Narrow

Timing Is Critical—Momentum Must Be Matched with Action

- **Infrastructure Is Coming:** Human settlements must be ready to absorb growth.
- **Avoiding Unplanned Urbanization:** Without proactive investment, rapid growth will lead to sprawl, service deficits, and environmental degradation.
- **Policy Alignment:** Vision 2030, 8NDP, and EU priorities support integrated inclusive urban development.
- **Investor momentum:** Cities must be investment-ready to seize current interest.
- **Cost of delay:** Inaction raises future costs for upgrading and service delivery.

“The Urban Opportunity: Enabling Transformative and Sustainable Development”. Cost of Inaction: Delayed investment will increase future costs of upgrading, resettlement, and service delivery—especially in informal areas

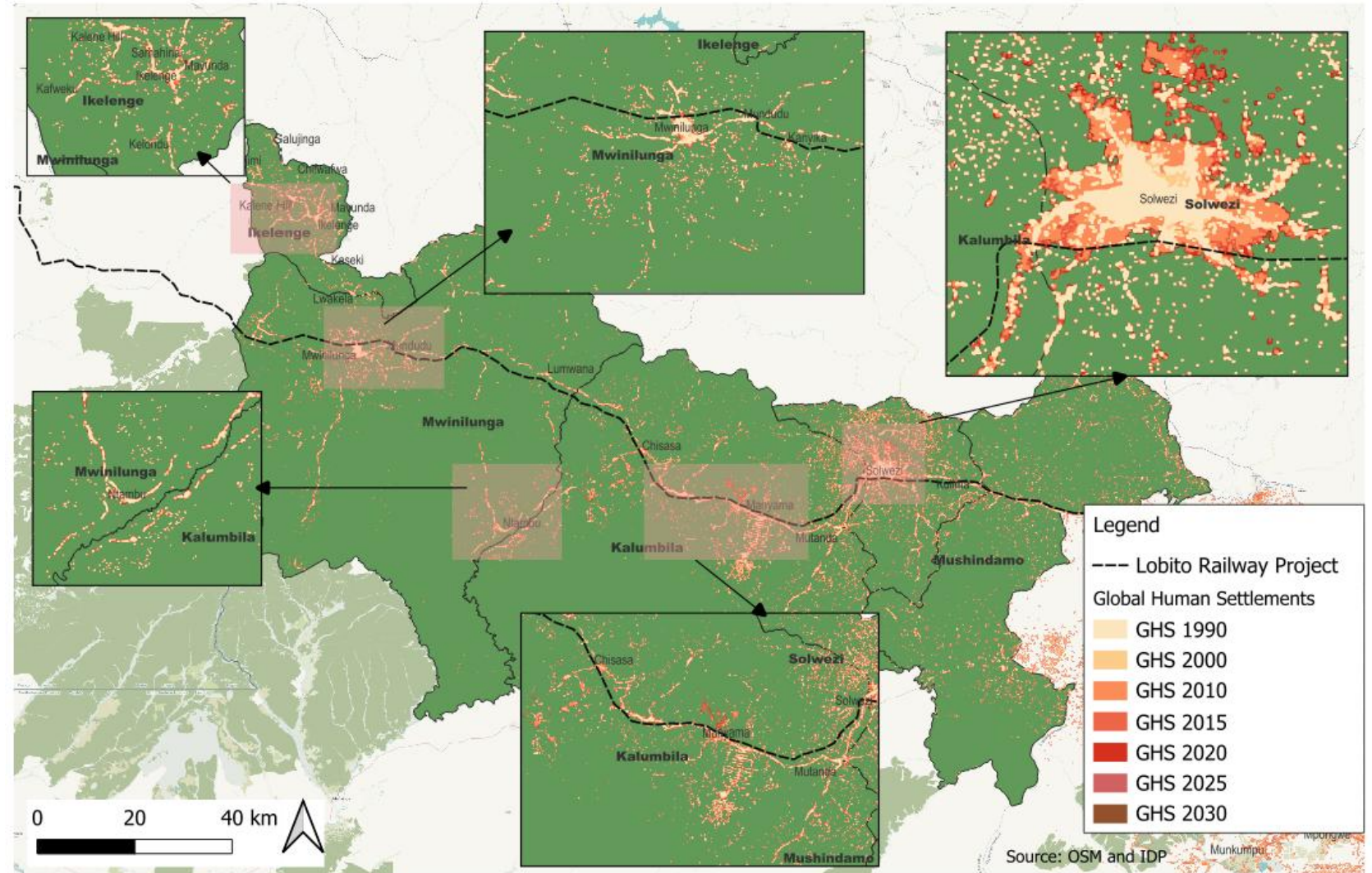


Overarching Vision

UDTF ZAMBIA : Human Settlements Lobito corridor in 2025



Urban Development Technical Facility Project
NDICI CHALLENGE/2022/436-490



"Transform the North-western Province into a diversified, competitive, economic and sustainable hub integrated into regional and global value chains through strategic development"



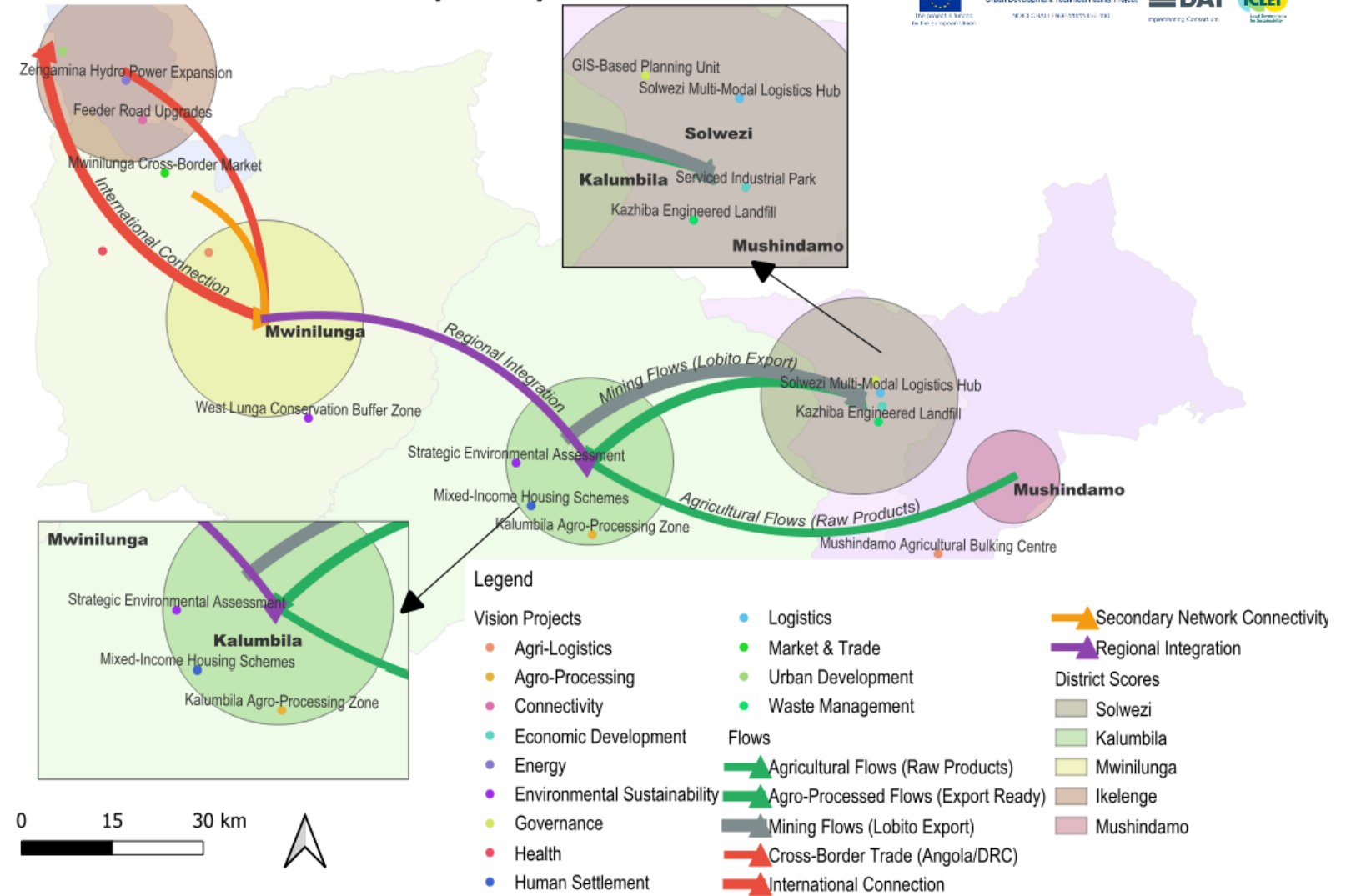
Urban Development Technical Facility Project
NDICI CHALLENGE/2022/436-490



Overarching Vision

“Based on spatial analysis, an emerging nodes-and-linkages structure to be reinforced”

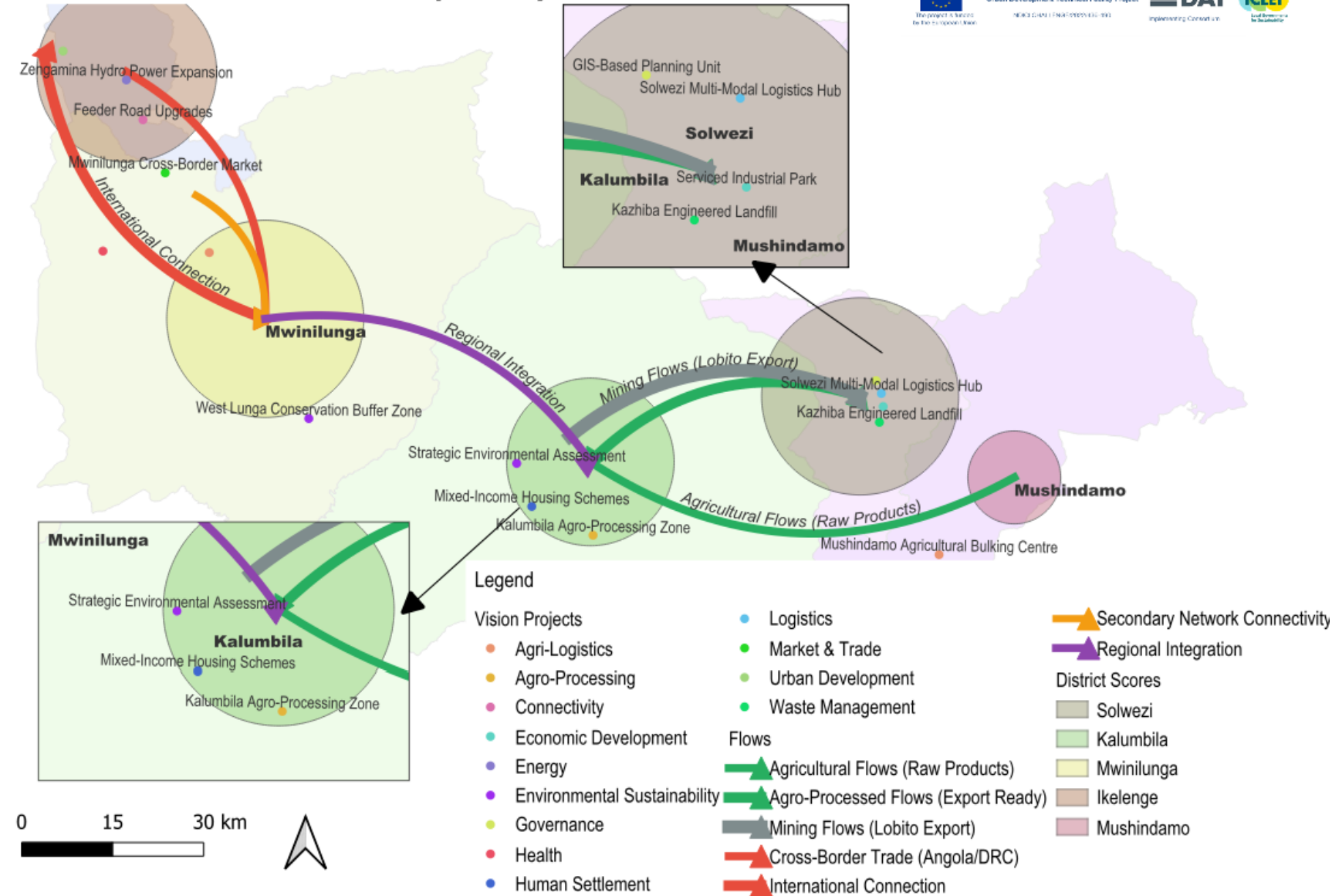
UDTF ZAMBIA: Lobito Corridor. Spatial Dynamic 2025



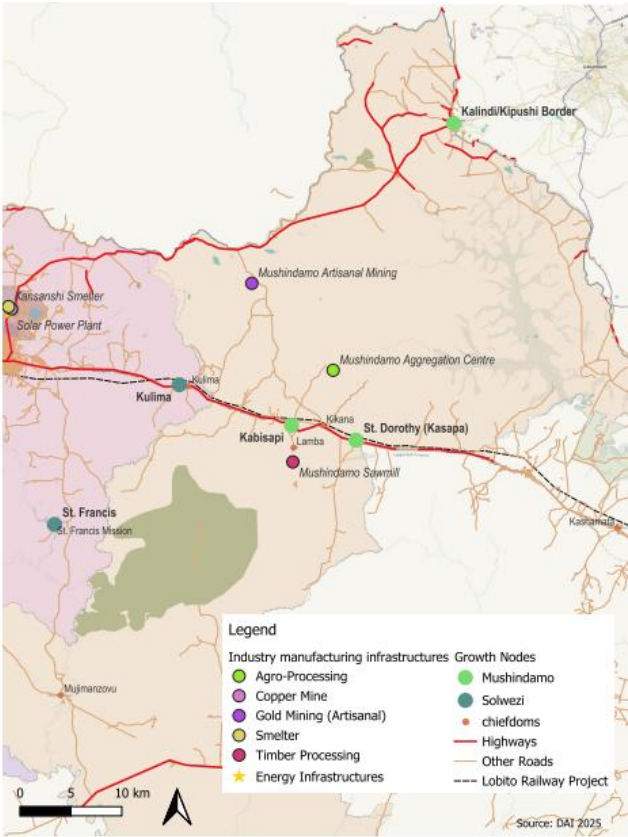
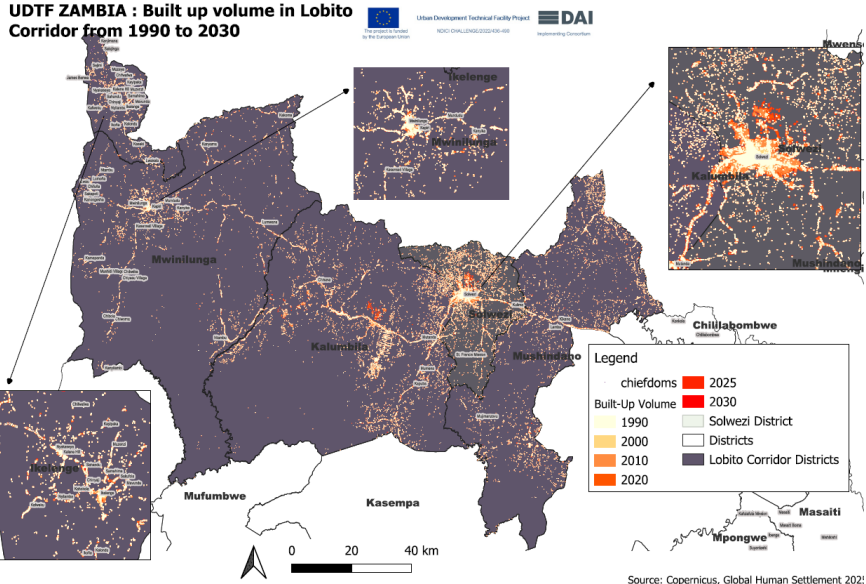
The Five Pillars of the Corridor – Spatial Dynamics

The vision is built on the unique and complementary strengths of five key districts in Northwestern Province:

UDTF ZAMBIA: Lobito Corridor. Spatial Dynamic 2025



Mushindamo



The project is funded by the European Union



Urban Development Technical Facility Project
NDICI CHALLENGE/2022/436-490



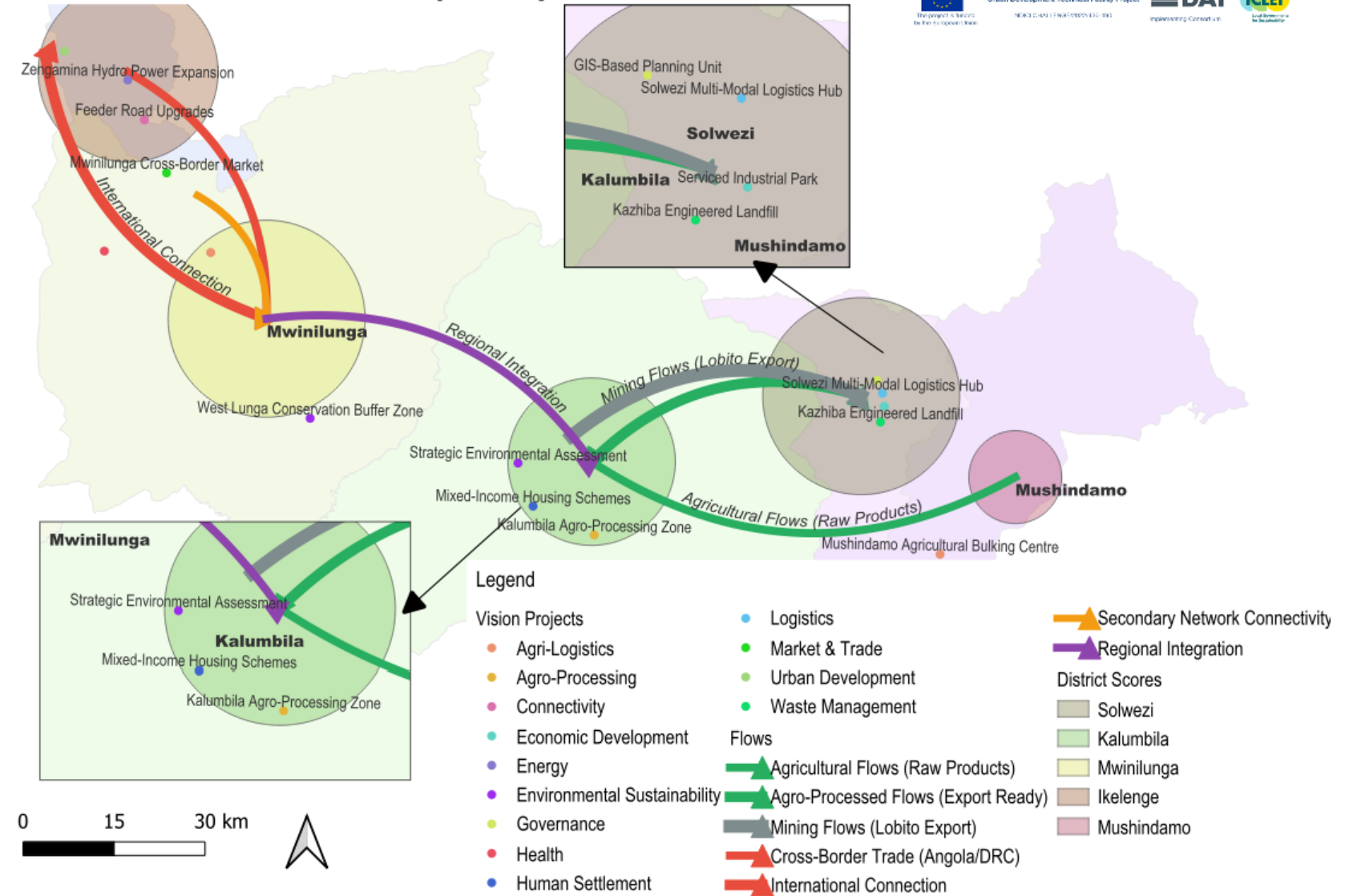
The Five Pillars of the Corridor (I)

Mushindamo: The Agricultural Heartland

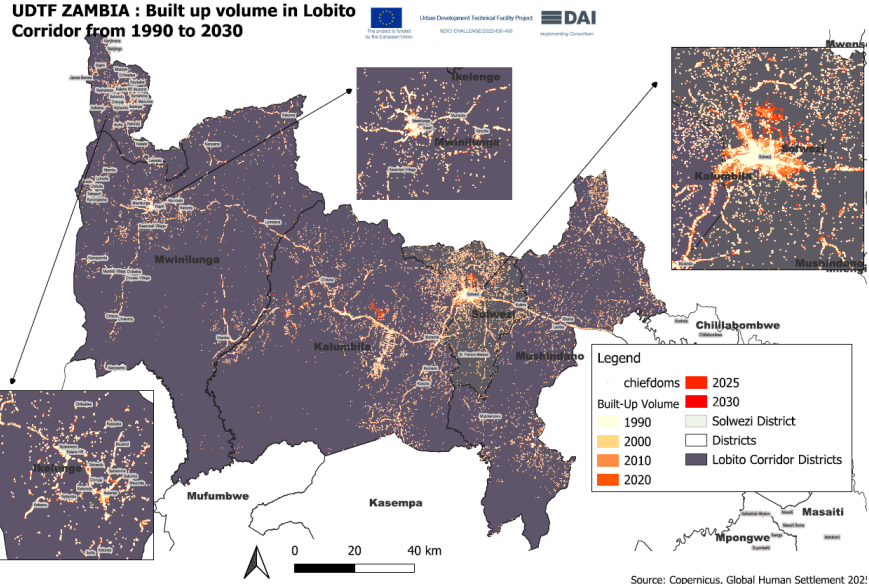
Mushindamo is championed as the breadbasket that fuels the corridor's agro-economy:

- **High-value Production:** High-yield and high-value agricultural production for the corridor.
- **Aggregation Hub:** Central node for gathering agricultural output from the region's farmers.
- **Strategic Link:** Supply of essential raw materials to processing facilities in Kalumbila and beyond.

UDTF ZAMBIA: Lobito Corridor. Spatial Dynamic 2025



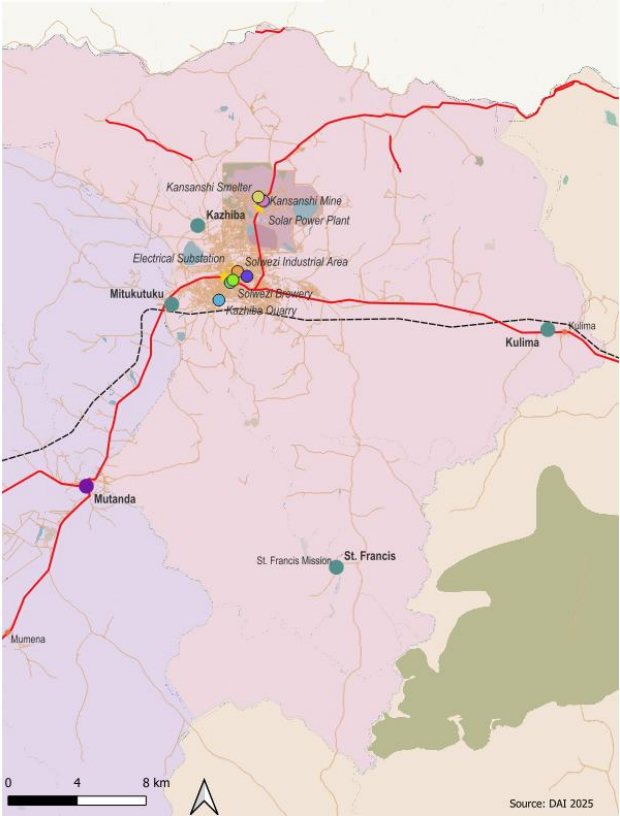
Solwezi



The project is funded by the European Union



Urban Development Technical Facility Project
NDICI CHALLENGE/2022/436-490



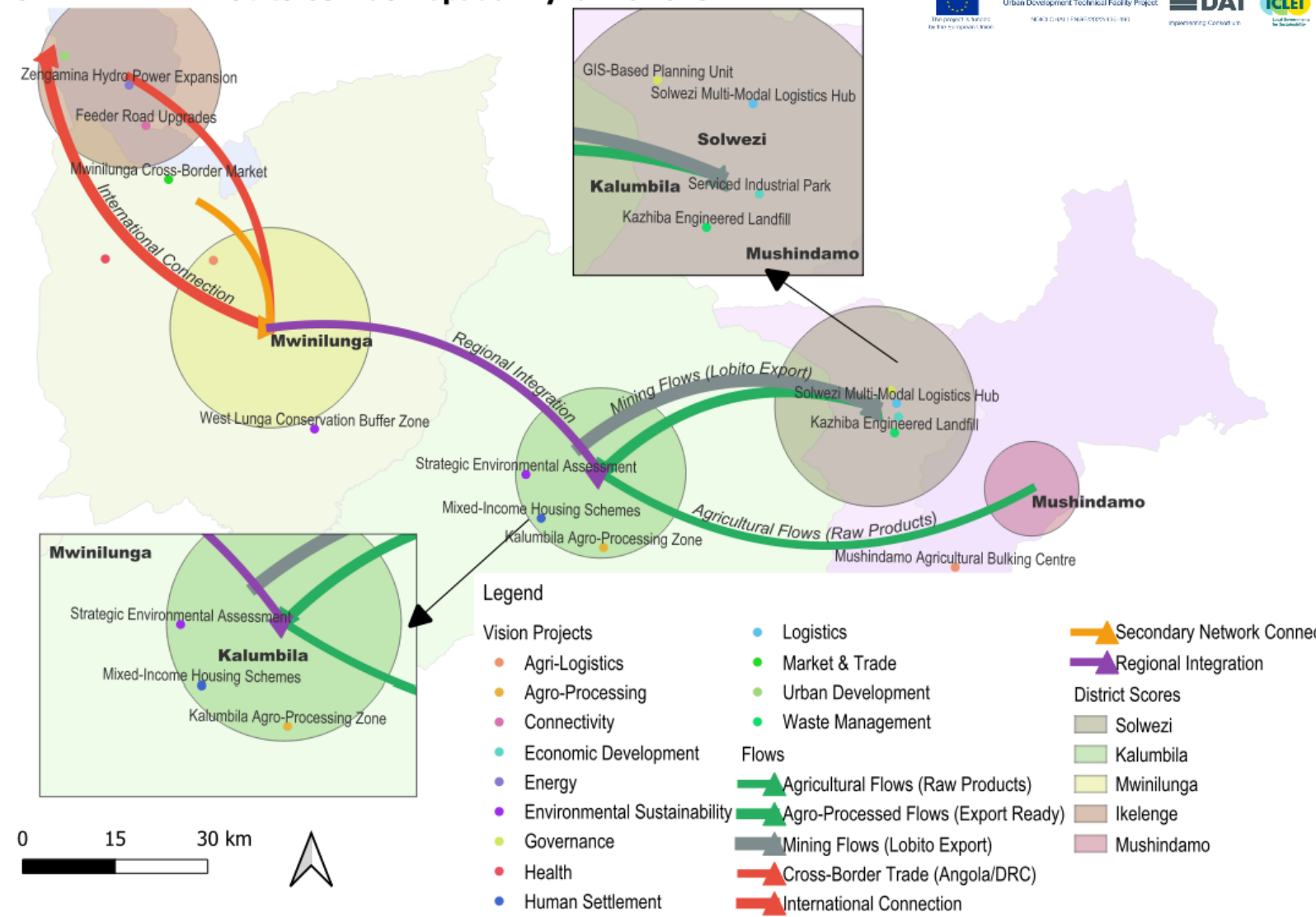
The Five Pillars of the Corridor (II)

Solwezi: The Command & Logistics Hub

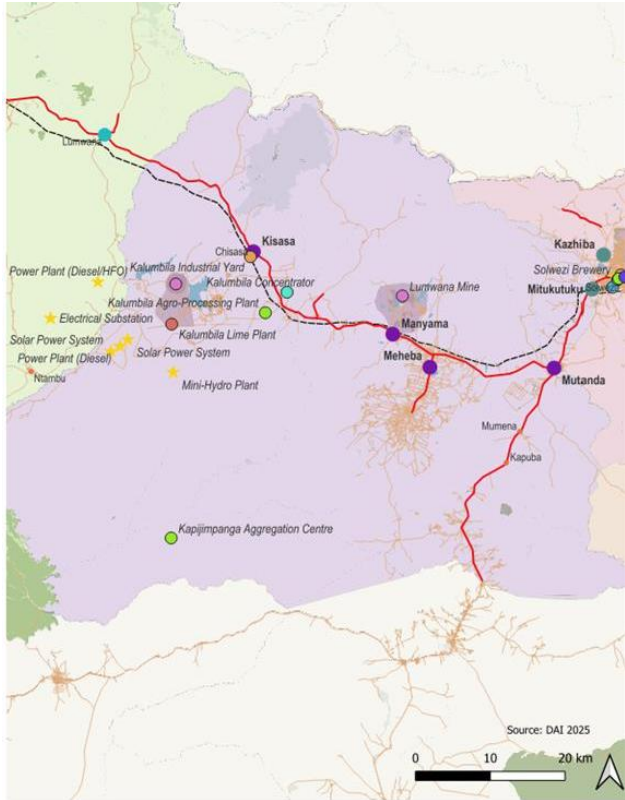
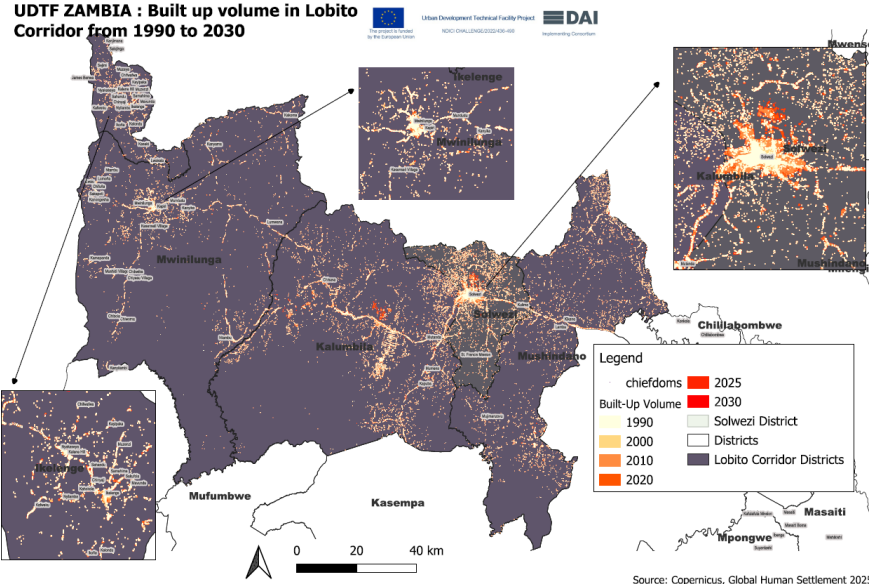
As the provincial capital, Solwezi evolves into the strategic nerve centre of the entire corridor. It is no longer just a mining town but a thriving hub for:

- **Logistics centre:** Coordinates rail, road, and future air cargo flows.
- **Value-added processing:** Hosts industrial parks for transforming raw materials.
- **Smart governance:** Leads corridor management through data-driven planning.
- **Sustainable infrastructure:** Sets regional benchmarks for urban and environmental standards.

UDTF ZAMBIA: Lobito Corridor. Spatial Dynamic 2025



Kalumbila



The project is funded
by the European Union



Urban Development Technical Facility Project
NDCI CHALLENGE/2022/436-490

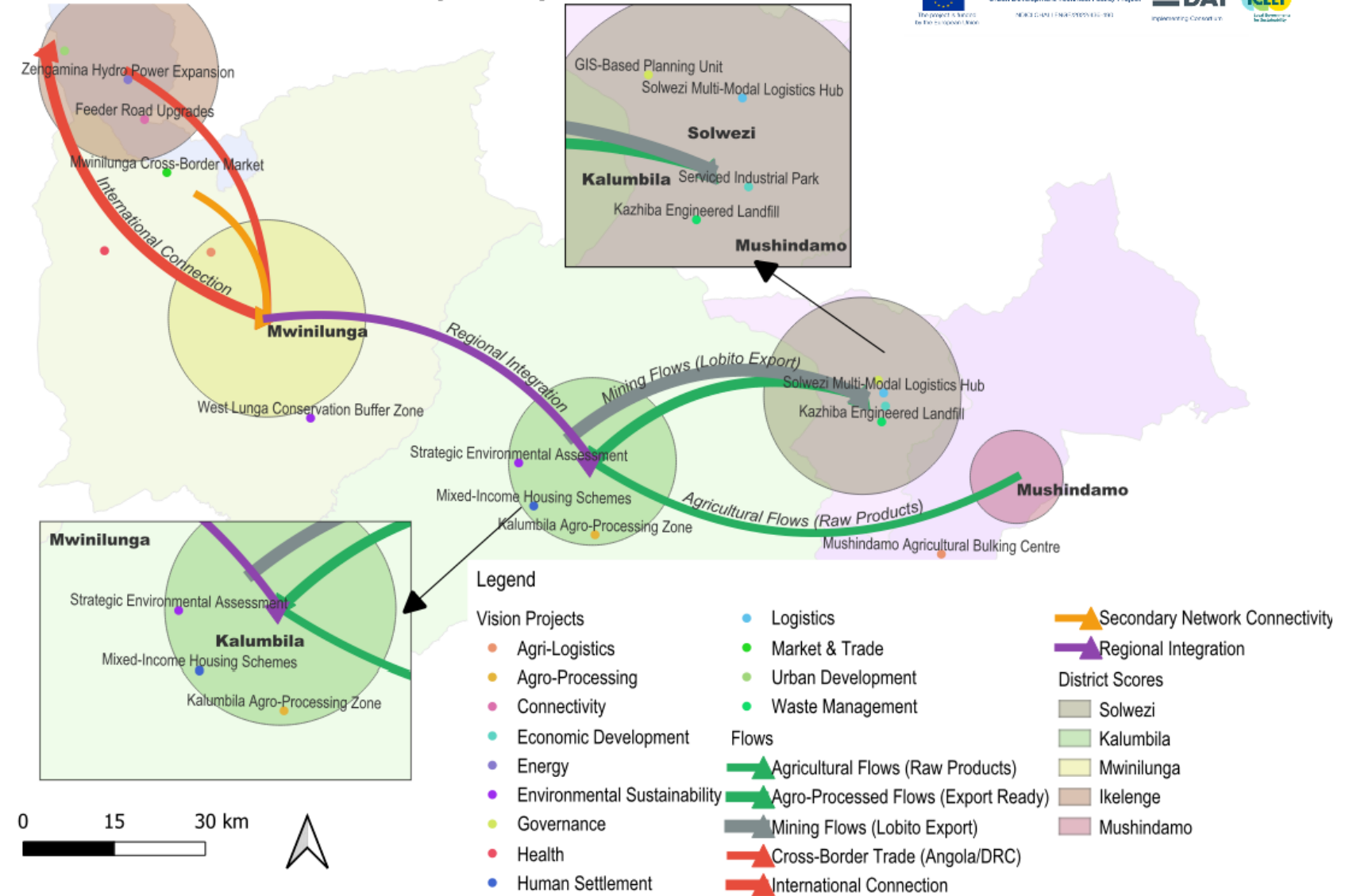


The Five Pillars of the Corridor (III)

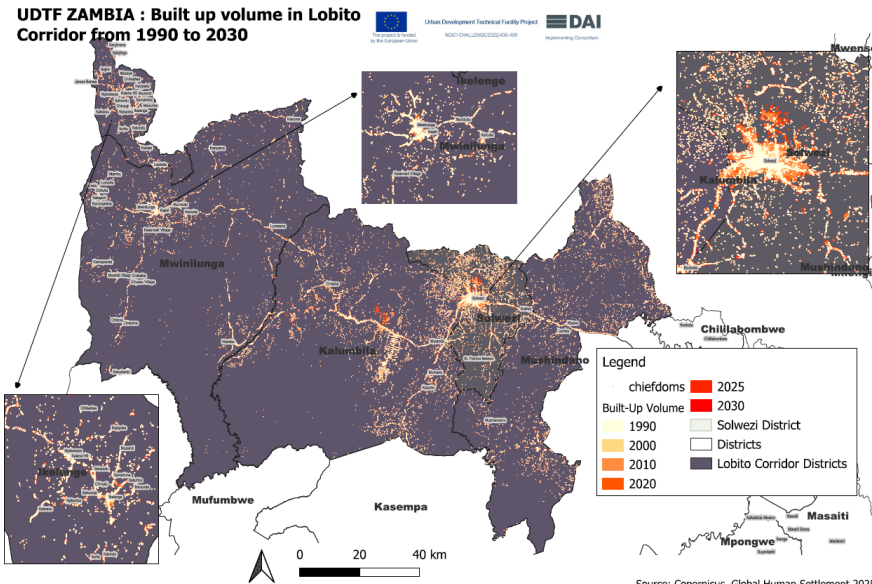
Kalumbila: The Agro-Processing Powerhouse

- Kalumbila's role is redefined from pure mineral extraction to value creation. It becomes the heart of the corridor's agricultural transformation, focusing on:
 - **Agricultural Transformation:** Converting raw produce into high-value, export-ready goods.
 - **Sustainable Communities:** Developing integrated and thriving townships beyond temporary mining camps.
 - **Circular Economy:** Links mining and agriculture for sustainable waste-to-value solutions.

UDTF ZAMBIA: Lobito Corridor. Spatial Dynamic 2025



Mwinilunga



Urban Development Technical Facility Project
NDICI CHALLENGE/2022/436-490

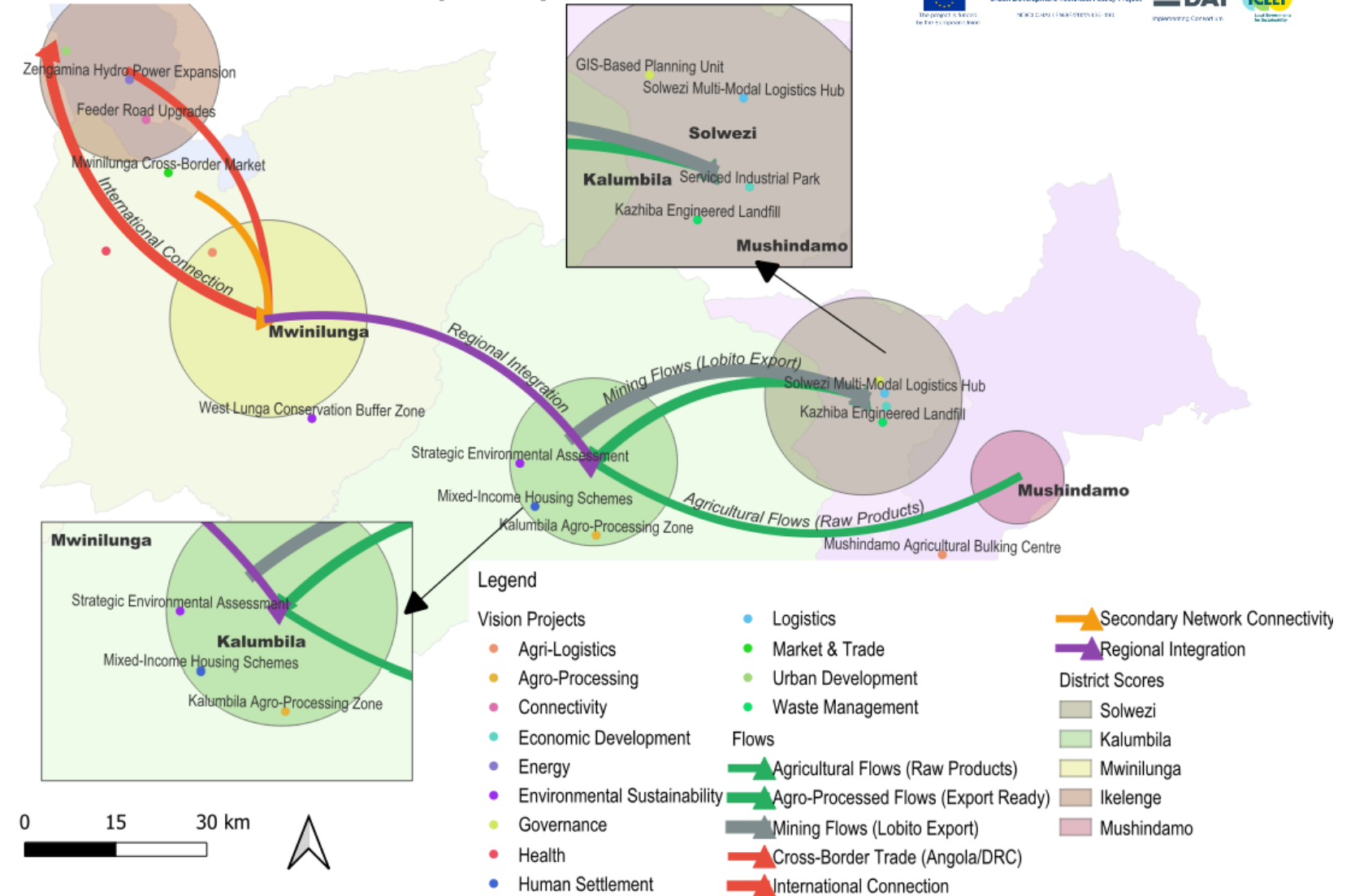


The Five Pillars of the Corridor (IV)

Mwinilunga: The Cross-Border Trade Nexus

- Leveraging its strategic border location, Mwinilunga becomes Zambia's vibrant northern trading post:
 - **Formalized Cross-Border Trade:** Creating a bustling economic zone that facilitates legitimate trade with Angola and the DRC.
 - **Regional Services Hub:** Upgrades health and education to serve wider populations, attracting new economic activity.
 - **Agricultural Aggregation:** Aggregates produce from surrounding fertile areas.

UDTF ZAMBIA: Lobito Corridor. Spatial Dynamic 2025



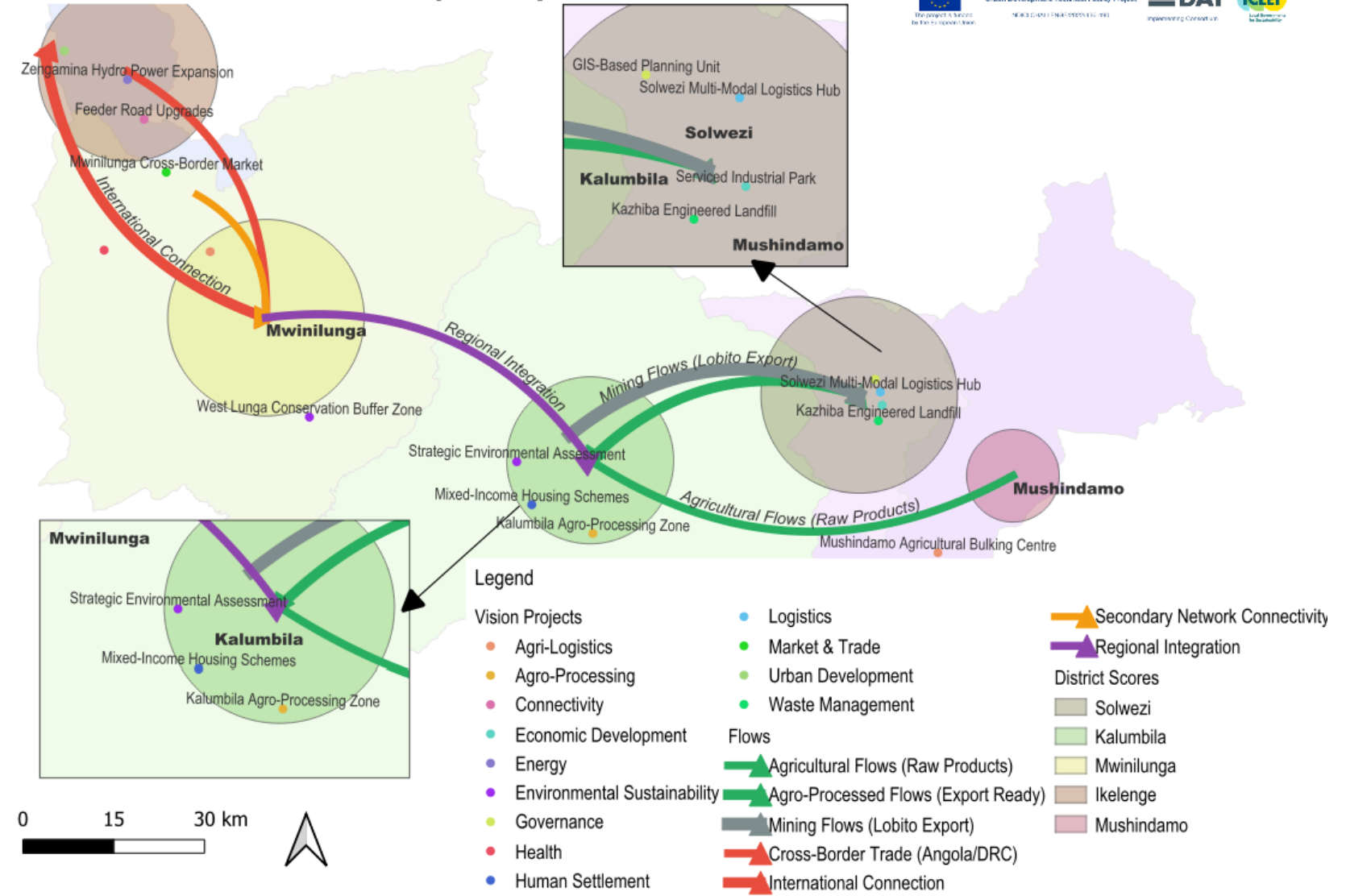
The Five Pillars of the Corridor (V)

Ikelenge: The Energy & Border Gateway

- Ikelenge is positioned as a critical international interface and energy source:

- Modern Border Development:** Upgrades Jimbe into a key international trade gateway.
- Renewable energy hub:** Harnesses hydropower for industrial and domestic use.
- Special Economic Zone:** Attracts investment in light manufacturing and logistics for cross-border markets.

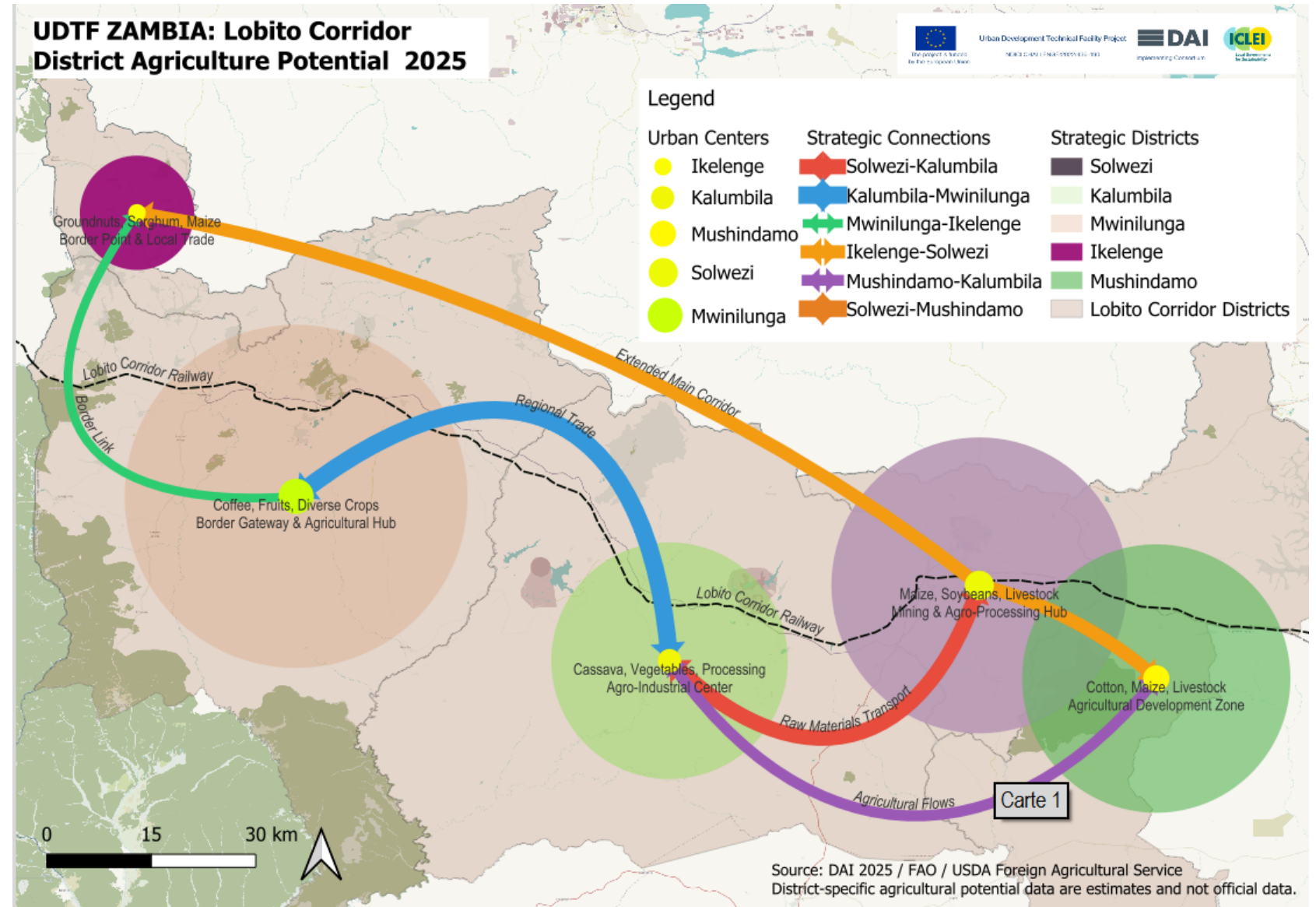
UDTF ZAMBIA: Lobito Corridor. Spatial Dynamic 2025



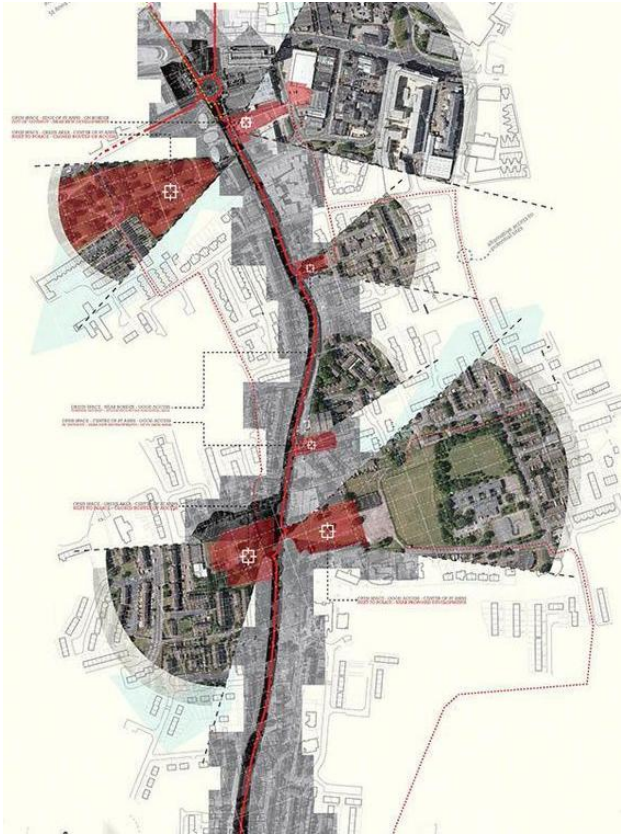
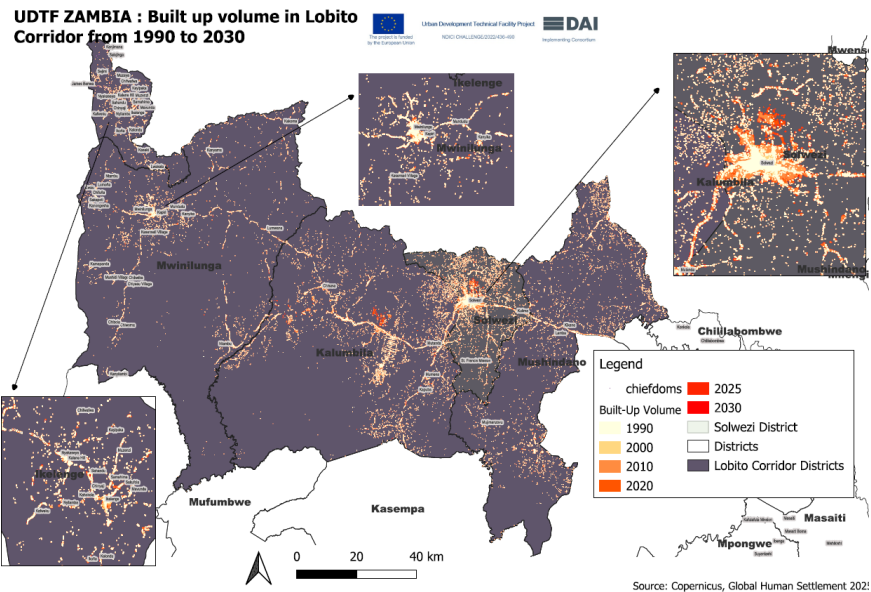
The Power of Connection:

The true genius of this vision lies not in the districts alone, but in how they are connected. The flows depicted are the lifeblood of the new economy:

- **Green Flows (Agricultural Value Chains):** Link production zones to processing hubs and markets, driving value chains.
- **Grey Flow (Minerals):** Channel mining output to the coast, under strong ESG frameworks.
- **Red Flows (Cross-Border Trade):** Enable formal and informal trade with Angola and DRC.
- **Purple and Orange Flows (Regional Integration):** Connect services, knowledge, and communities to prevent enclave development.



Overview of Investment Packages



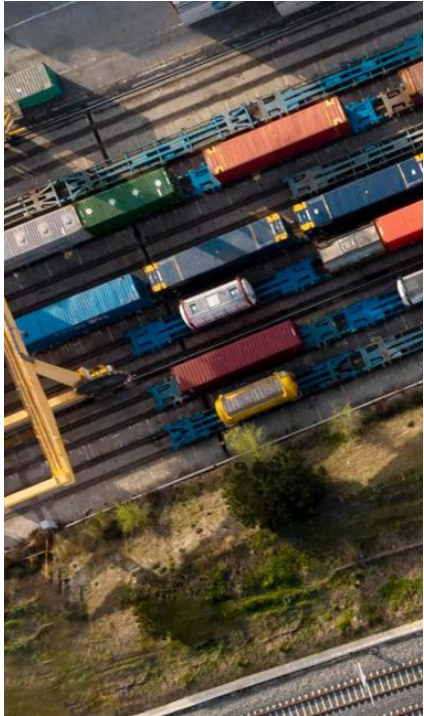
The project is funded by the European Union



Urban Development Technical Facility Project
NDICI CHALLENGE/2022/436-490



Investment Prioritization Criteria – Lobito Corridor



What Makes a Project Corridor-Ready?

Six Core Prioritisation Criteria for Investment Projects



Strategic Alignment

8NDP, IDPs, decentralisation,
rural transformation,
provincial targets



EU Global Gateway

Infrastructure, green
energy, digital innovation,
human capital, trade



Economic Viability

Job creation, enterprise
growth, anchor
investment, value chains



Feasibility & Risk- Readiness

Budget realism, risk
mitigation, implementer
capacity



Social Impact

Inclusion, service access,
gender/ youth equity,
spatial balance



Environmental Sustainability

Green technologies, biodiversity,
pollution reduction, regulatory
compliance

Investment Architecture – Four Package Types

A Modular Investment Strategy for Scalable Impact

- **Corridor-wide investments:** Strategic infrastructure, regional planning, climate resilience, and cross-border trade and logistics.
- **District-Specific:** Tailored to local strengths (e.g. agro-logistics, housing); promotes inclusive governance and services.
- **Growth Nodes:** Targets urban centers and border posts with housing, transport, SMEs, and social infrastructure.
- **Stand-alone Projects:** Ready-to-launch, high-impact initiatives (e.g. eco-tourism, solar mini-grids); scalable and replicable.



Sample Corridor-Wide Package – Integrated Planning & Resilience

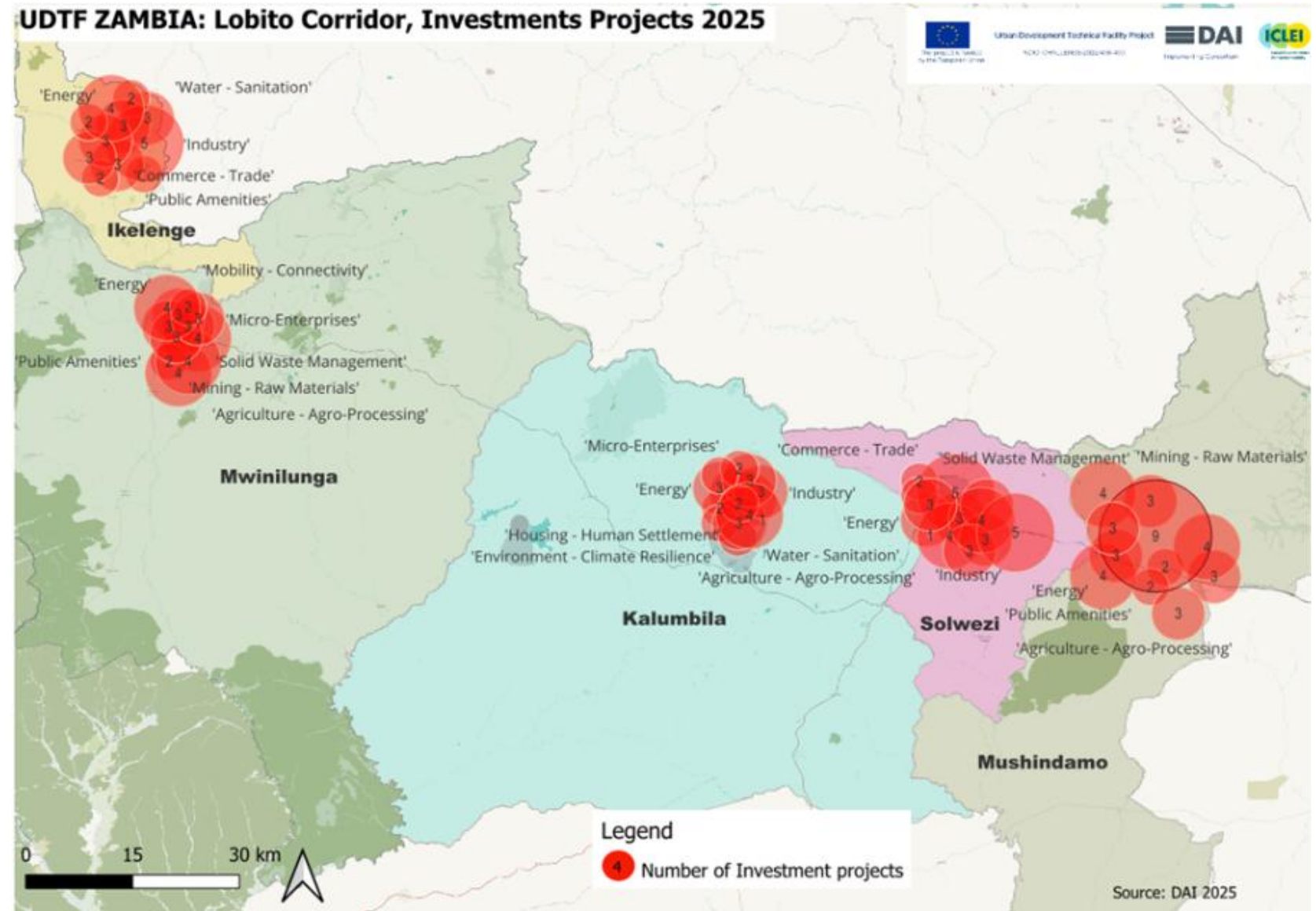
Planning for People, Planet, and Prosperity

Package Components:

- Regional Development Plan and Spatial Framework
 - Climate vulnerability mapping and adaptation strategy
 - Corridor data dashboard and digital planning tools
 - Capacity building for provincial and district planners

Expected Returns:

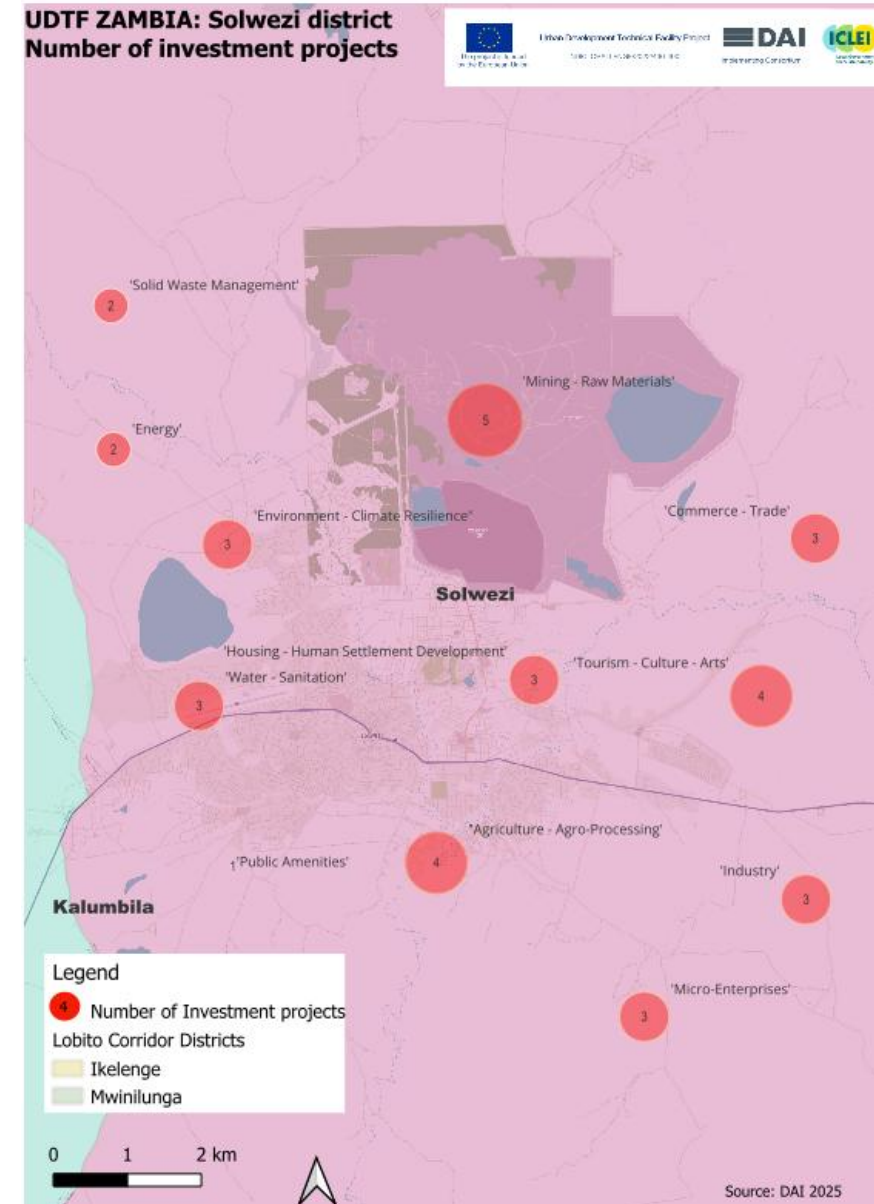
- Reduced planning conflicts and land disputes
 - Improved climate resilience and environmental safeguards
 - Stronger coordination across sectors and districts
 - Enhanced investor confidence through transparency



Sample District Package – Solwezi Urban Upgrade

Solwezi as a Smart, Inclusive Logistics Hub

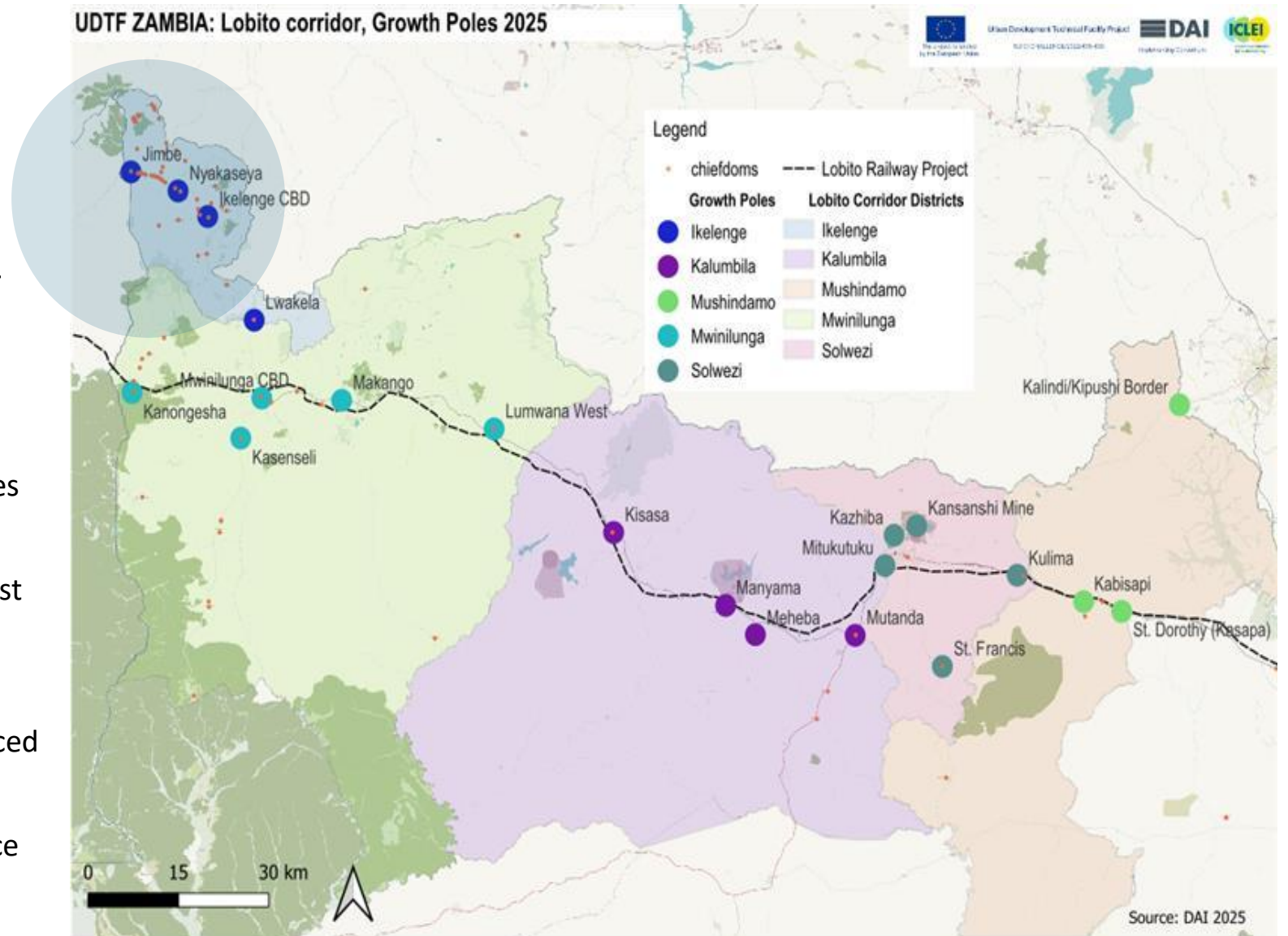
- **Package Components:**
 - Regional Development Plan and Spatial Framework
 - Climate vulnerability mapping and adaptation strategy
 - Corridor data dashboard and digital planning tools
 - Capacity building for provincial and district planners
- **Expected Returns:**
 - Reduced planning conflicts and land disputes
 - Improved climate resilience and environmental safeguards
 - Stronger coordination across sectors and districts
 - Enhanced investor confidence through transparency



Sample Growth Node Package – Jimbe Border Town

From Remote Outpost to Gateway of Trade

- Package Components:
 - Modern border post with customs, logistics, and trade facilities
 - Mixed-use housing and commercial zones
 - Renewable energy mini-grid and water systems
 - Vocational training center and health post
 - SME incubation and agro-processing cluster
- Expected Returns:
 - Formalized cross-border trade and reduced smuggling
 - Job creation and local enterprise growth
 - Improved regional integration and service access
 - Strategic anchor for corridor expansion



Sample Stand-alone Package – Solar Grid

Solar energy: the smart choice for tomorrow

Package Components:

- Solar PV Modules: Panels (monocrystalline or polycrystalline) sized to match energy demand and land availability.
- Inverters: Convert DC to AC; central or string inverters depending on system scale.
- Mounting Structures: Fixed or tracking systems to optimize solar capture.
- Battery Storage (optional): Enhances grid stability and supports off-grid or hybrid systems.
- Grid Connection Equipment: Transformers, switchgear, and metering systems.

Strategic Considerations for Corridor-Linked Projects

- **Anchor Demand:** Industrial zones, mining operations, or logistics hubs can stabilize demand and improve bankability.
- **Blended Finance:** Combine donor grants, development finance, and private equity to de-risk investment.
- **Local Empowerment:** Include community ownership models



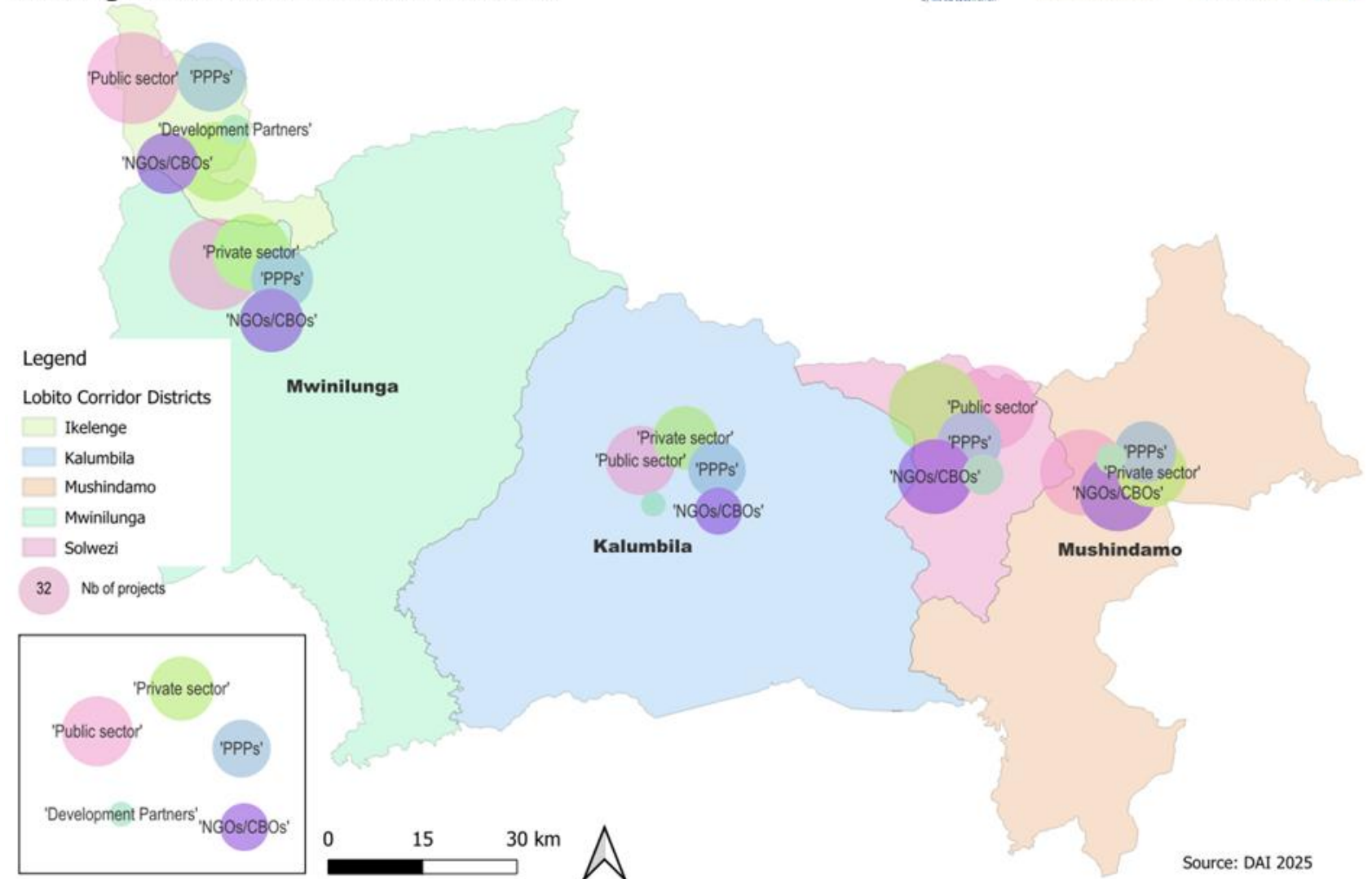
Investment Architecture Opportunities for all Sectors

Funding and Investment Opportunities for All

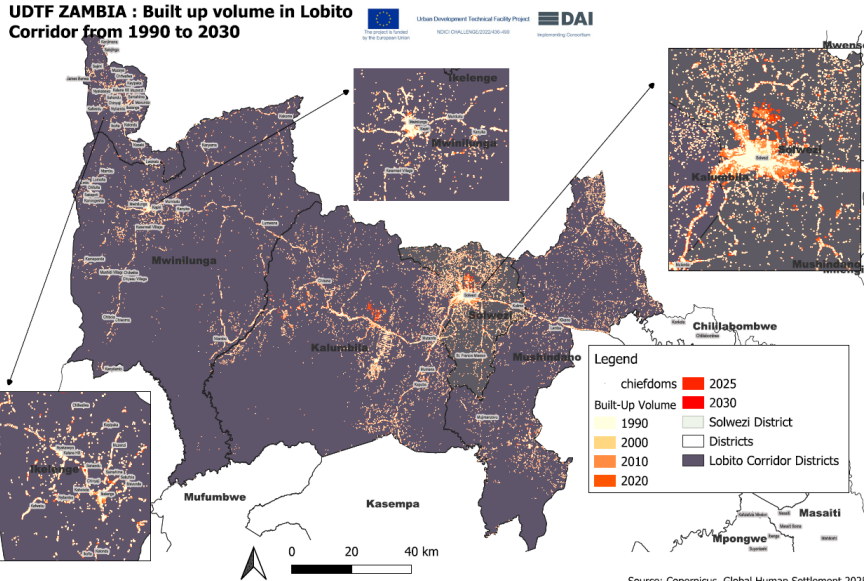
Sectors

- Various funding investment opportunities exist for all sectors,
- Major funding categories include:
 - Public sector
 - Private sector
 - PPPs
 - Development partners
 - Development Finance Institutions
 - NGOs/CBOs
 - Blended financing

UDTF ZAMBIA: Lobito corridor Funding Modalities for investments 2025



Government Support and Facilitation



Urban Development Technical Facility Project
NDICI CHALLENGE/2022/436-490



Government Commitment to Corridor-Aligned Urban Development

Policy Backing, Institutional Coordination, and Planning Reform

- **Policy Alignment:** Anchored in Vision 2030, 8NDP, Lobito MOU, and EU Global Gateway and PGII frameworks.
- **Spatial Planning Reform:** Updating IDPs and proposing regional development plans and local area plans.
- **Institutional Coordination:** Active engagement of key ministries, updated Resettlement Policy (safeguards and compensation), and inclusion of chiefs and WDCs in planning.
- **Infrastructure facilitation:** 55 growth nodes identified; PPP frameworks, Constituency Development Fund (CDF) and potential **Urban and Municipal Development Fund (MDF)** [AfDB] for co-financing.



Value Proposition for Investors

Why the Lobito Corridor Is a Smart Investment Destination

- **Strategic Location:**
 - Gateway to Angola and DRC, with access to Atlantic trade routes.
 - Positioned for regional integration and export-led growth.
- **Investor Incentives:**
 - Multi-Facility Economic Zones (MFEZs) planned.
 - Investment licenses offer tax incentives and streamlined approvals.
 - Local Content Policy promotes partnerships with Zambian firms.
- **Public-Private Partnerships (PPPs):**
 - Government open to PPPs in housing, infrastructure, logistics, and energy.
 - Rent-to-own models and corridor-linked industrial clusters encouraged.
- **Political Will and Momentum:**
 - High-level support from the Presidency and Cabinet.
 - November Business Forum and EU-Africa platforms spotlighting corridor opportunities.



What Government Must Do – Enabling Investment Through Infrastructure & Governance

Public Sector Action Is the Foundation for Private Sector Growth

Key Interventions:

- **Infrastructure as a Precondition:** Build essential infrastructure in emerging urban centres as investment enablers.
- **Land Regularization & Spatial Planning:** Digitise customary land, creating transparent allocation systems, and integrating chiefdoms into district plans to reduce conflict and attract investment.
- **Social & Environmental Assessments (SEA):** Conduct SEAs to reduce risk and improve sustainability.
- **Governance & Coordination:** Establish Corridor Coordination Units, train local officials, and create joint planning platforms with councils, chiefs, and the private sector.

Public investment is not a cost—it is a multiplier. Every dollar spent by government can unlock three to five dollars in private sector value



The Multiplier Effect – Why Public Investment Matters Now

Strategic Public Investment Unlocks Inclusive Growth

Catalytic Impacts:

- **Private Capital Inflows** into housing, logistics, agro-processing, and energy.
- **Job Creation** through SME growth and local procurement.
- **Revenue Generation** via taxes, leases, and service fees.
- **Social Upliftment** through improved services and infrastructure.

Risks of Inaction:

- **Corridor bypass syndrome**—local communities miss out.
- **Investor flight** due to poor infrastructure and land disputes.
- **Social unrest** from exclusion or environmental harm.

Bottom Line: The Lobito Corridor must be a model of inclusive, coordinated development. The private sector is ready—but it needs a reliable public partner.



Transformative Impact on Communities and Cities

From Underserved Settlements to Engines of Inclusive Growth

Key Impacts:

- **Improved Livelihoods:** Expands access to housing, water, sanitation, and electricity, reducing poverty.
- **Social Inclusion:** Improves health, education, and programs for vulnerable groups.
- **Spatial Equity:** Balances development across districts to ease pressure on Solwezi through strategic investment in other corridor districts
- **Environmental Resilience:** Promotes green infrastructure and protects ecosystems.



Benefits – Human, Economic, and Institutional

Investing in Settlements Delivers Multi-Dimensional Returns

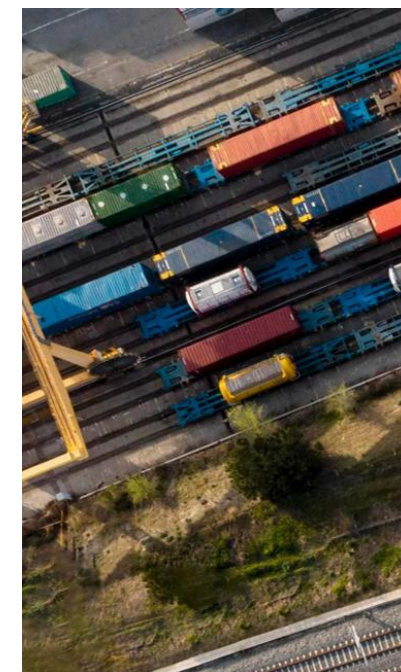
Return Dimensions:

- **Economic:** Jobs, productivity, and increased land and municipal revenue.
- **Human Capital:** Healthier, educated populations with empowered youth and women
- **Institutional Strengthening:** Stronger governance, planning capacity, and coordination with traditional leaders.
- **Environmental:**
 - Land restoration, circular economy, climate resilience, and ecosystem protection
 - Investor confidence from clear systems, SEA compliance, and scalable models.



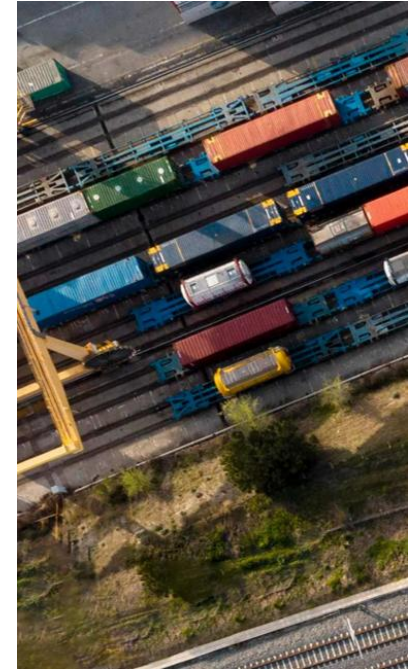
International Precedents

Corridor Project & Region	Positive Output	Replicability for Lobito Corridor
Northern Corridor (East Africa)	One-Stop Border Posts (OSBPs) reduced clearance times by 70%	Highly replicable at Lobito border crossings (e.g., Jimbe) to streamline trade and customs
Maputo Development Corridor (Southern Africa)	PPP-led infrastructure upgrades (roads, rail, port) attracted \$5B+ in investment	PPP frameworks can be adapted to attract private capital for Lobito rail and logistics hubs
Central Corridor (Tanzania)	Agro-logistics hubs boosted smallholder market access and regional trade	Viable for Northwestern Zambia's agriculture zones (e.g., Mwinilunga, Mushindamo)
LAPSSET Corridor (Kenya-Ethiopia-South Sudan)	Integrated spatial planning aligned infrastructure with economic zones	Can guide Lobito Corridor's alignment with mining, agriculture / agro processing, energy clusters



International Precedents

Corridor Project & Region	Positive Output	Replicability for Lobito Corridor
Greater Mekong Subregion (GMS) Corridors – Asia	<i>Cross-border transport agreements (CBTAs)</i> enhanced regional mobility	Useful for Angola-Zambia-DRC harmonization of axle loads, insurance, and driver permits
Delhi-Mumbai Industrial Corridor (India)	<i>Anchor industrial zones</i> catalyzed manufacturing and SME growth	Potential for Kalumbila-Solwezi industrial zones linked to mining and agro-processing
Southern Agricultural Growth Corridor of Tanzania (SAGCOT)	<i>Inclusive outgrower schemes</i> linked farmers to export markets	Applicable to value chains in honey, coffee, and groundnuts in Northwestern Zambia



Kalumbila Case Study

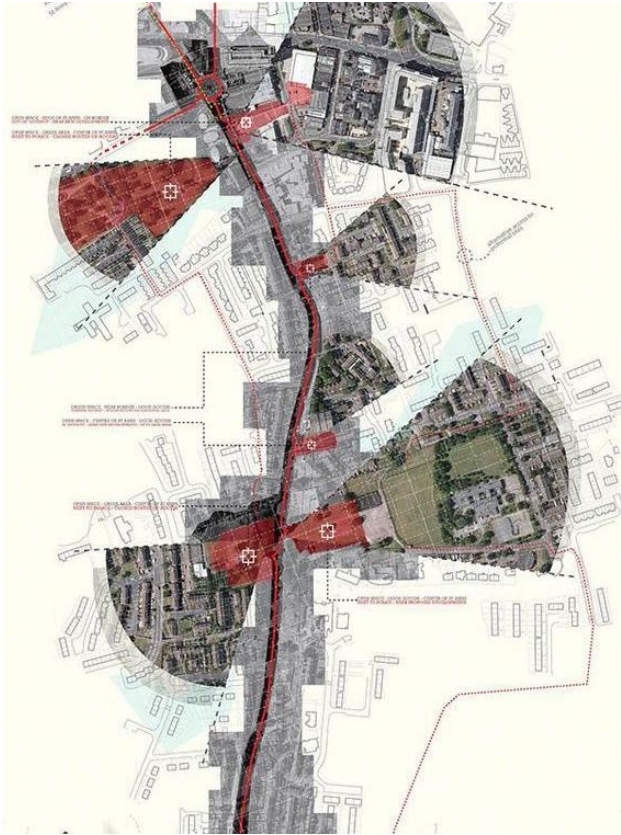
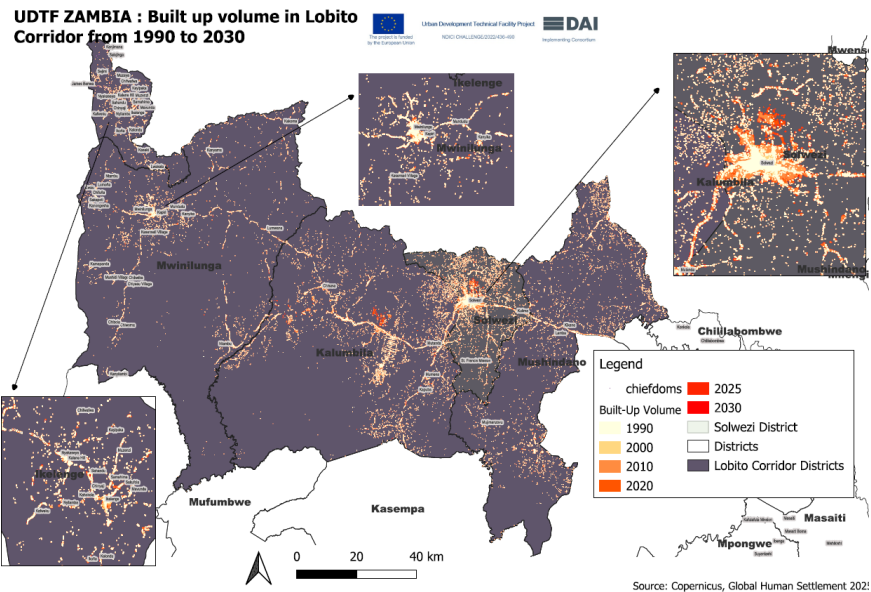
“If implemented correctly, investments can create transformational change in human settlements”



Urban Development Technical Facility Project
NDICI CHALLENGE/2022/436-490



Call to Action and Conclusion



Urban Development Technical Facility Project
NDICI CHALLENGE/2022/436-490



Conclusion – From Transit Route to Transformation Corridor

The Lobito Corridor Is Zambia's Gateway to Inclusive Growth—IF WE BUILD IT RIGHT

Key Message:

- The Lobito Corridor is **more than infrastructure**—it's a **development spine** that **connects people, places, and possibilities**.
- **Functioning and well-planned human settlements** are the foundation for **unlocking economic, social, and environmental returns**.
- **Strategic public investment** in infrastructure, land systems, and governance is not optional—it's the **catalyst for private sector participation**.
- The five districts—Mushindamo, Solwezi, Kalumbila, Mwinilunga, and Ikelenge—each play a unique role, but their **power lies in connection**.
- **The time to act is now**. With coordinated planning, inclusive investment, and bold leadership, Zambia can turn the Lobito Corridor into a model of regional prosperity.

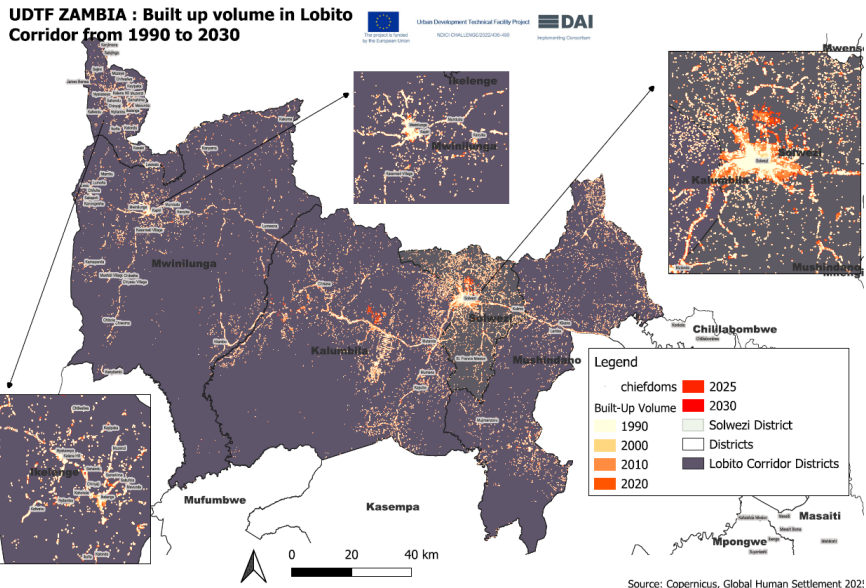
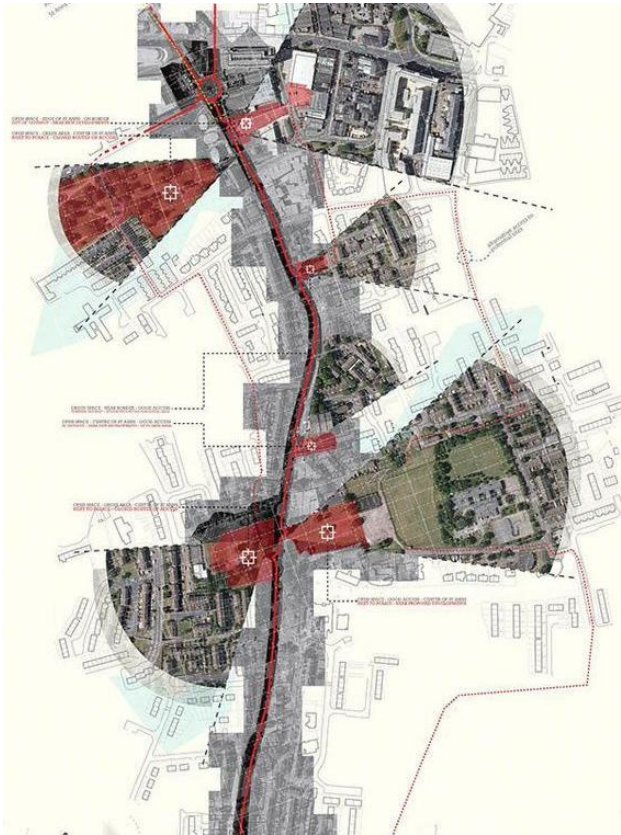


Project Team Composition:

Aloysius Bongwa
Meembo Nchimunya Changula
Laurent Couret

Contributors:

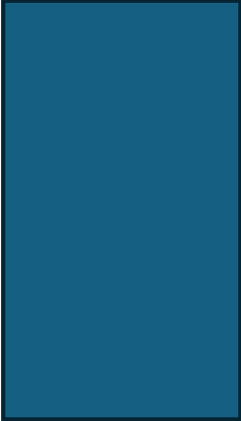
Raymond Lukomona



Urban Development Technical Facility Project
NDICI CHALLENGE/2022/436-490



Stakeholder Consultations and Field Exploration



The project is funded
by the European Union



Implementing Consortium

Urban Development Technical Facility Project

NDICI CHALLENGE/2022/436-490



Local Governments
for Sustainability



Stakeholder Consultations and Field Exploration



Urban Development Technical Facility Project
NDICI CHALLENGE/2022/436-490



Stakeholder Consultations and Field Exploration



Urban Development Technical Facility Project
NDICI CHALLENGE/2022/436-490



Stakeholder Consultations and Field Exploration



Urban Development Technical Facility Project
NDICI CHALLENGE/2022/436-490

