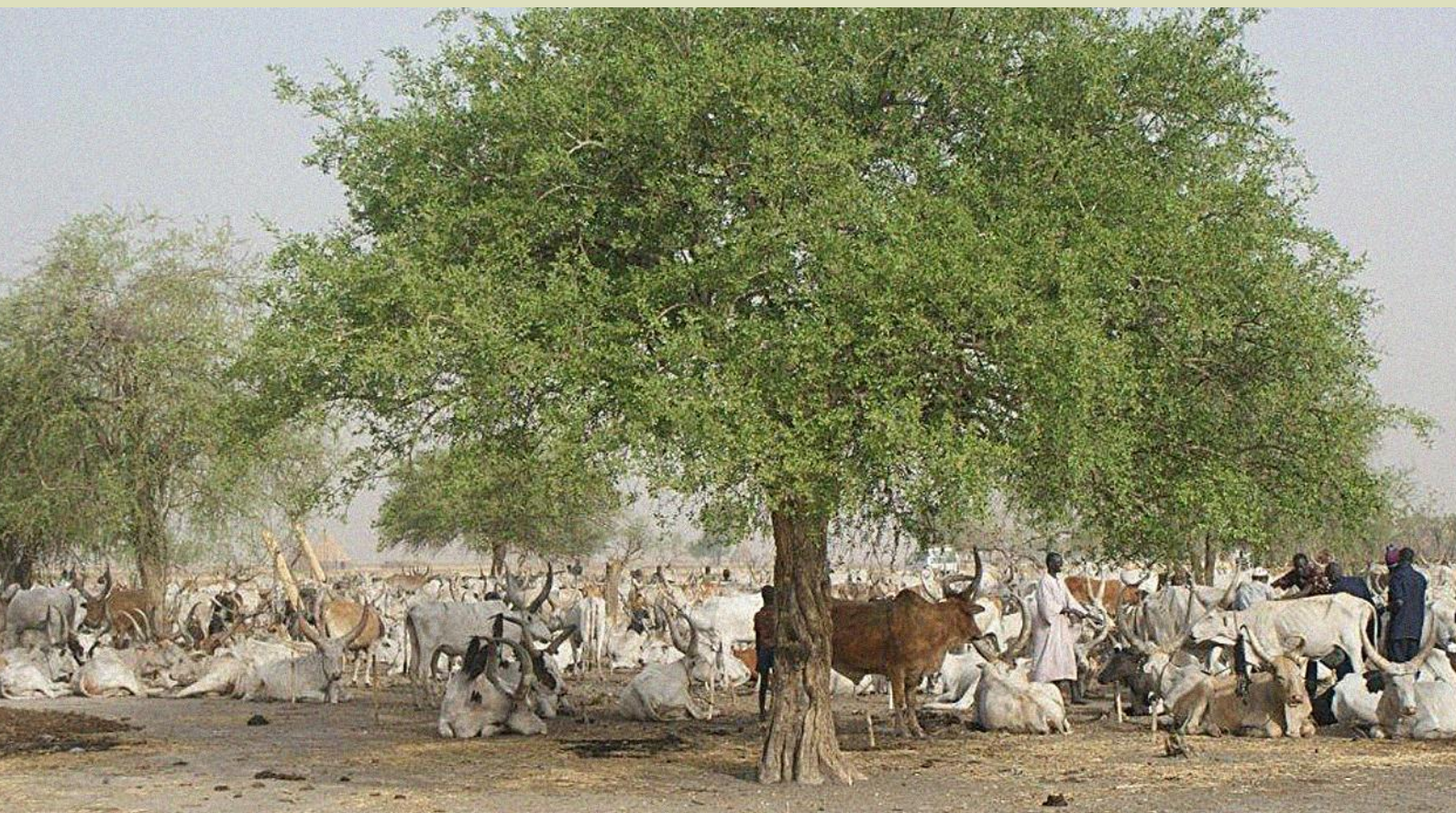


# Capacity Assessment of South Sudan Food Security and Nutrition Information Systems

NOVEMBER 2013



This document supports the overall objectives of the Food Security Information Network (FSIN) to strengthen information systems for food and nutrition security and promote evidence-based analysis and decision making.

The designations employed and the material presented in this document do not imply the expression of any opinion whatsoever on the part of the Food and Agriculture Organization (FAO) and the World Food Programme (WFP) or their governing bodies concerning the legal or development status of any country, territory, city or area or of its authorities, or concerning the delimitation of its frontiers or boundaries. The views expressed in this document are those of the author(s) and do not necessarily reflect the views of FAO, WFP and their governing bodies.

**All rights reserved.** FAO and WFP encourage the use and dissemination of material in this information product. Reproduction and dissemination thereof for educational or other non-commercial uses are authorized provided that appropriate acknowledgement of FAO and WFP as the source is given and that FAO's and WFP's endorsement of users' views, products or services is not implied in any way.

All requests for translation and adaptation rights, and for resale and other commercial use rights, should be addressed to the FSIN secretariat at [fsin-secretariat@wfp.org](mailto:fsin-secretariat@wfp.org).

## Table of Contents

Executive Summary .....	2
Introduction to the FSIN.....	6
Background Analysis on South Sudan .....	7
Government-led Food Security Bodies .....	7
Capacity Assessment Approach.....	8
Capacity Assessment Methodology .....	9
Capacity Assessment Main Findings.....	10
Findings on Government-led food security bodies .....	10
Findings on Existing Food Security Information Systems.....	13
Findings on validation mechanisms to discuss food and nutrition security information .....	17
Conclusions and Recommendations .....	18
Annex 1 – FSIN principles on capacity development and Possible Follow up activities.....	22
Annex 2 – Summary of levels of data collection by type and state.....	23
Annex 3 – Focus Group Discussion Summary Table.....	24
Annex 4 – Existing food and nutrition information systems in South Sudan.....	26
Annex 5 – Reliability and Timeliness scores for existing food security and nutrition information systems.....	35
Acronyms .....	37

## Executive Summary

A capacity assessment mission was undertaken in South Sudan by the Food Security Information Network (FSIN) in collaboration with the Food and Agriculture Organization (FAO)-assisted Agriculture and Food Information Systems (AFIS) project in June 2013. Using a combination of FSIN and FAO capacity assessment tools, interviews were conducted at national level and in all ten States with 146 stakeholders, including senior staff of two ministries. The aim of this exercise was to analyze the capacities of different users and producers of Food and Nutrition Security (FNS) information in the country, to facilitate development of a coordinated plan of action for capacity development in support of the Government of South Sudan.

The humanitarian and political environment of South Sudan illustrates a strong demand for major actions to address food security challenges by supporting evidence based food and nutrition security decision-making processes. Within this framework, it would be instrumental to support the institutionalization of a robust food security information system at the national and state level capable of formulating and implementing standardized methodologies for FNS data collection, analysis and communication to all stakeholders and decision makers. The rationale is that accurate food security data on target groups is needed to develop food security-related policies. To this end, it is important that policy makers have the capacities to use standardized methodologies and existent food security and nutrition information systems. Therefore, these systems need to be institutionalized and become part of a structured government system in which national ownership is established and budgetary resources are allocated to build capacities and provide effective services.

Following the FSIN Capacity Assessment, three major areas of observations were made as follows:

### **1) Findings on gaps in food and nutrition security information systems' coverage**

- In terms of extant key food and nutrition information systems, the analysis suggests that the main ones are driven at national level. Although all states have a good knowledge and understanding of national level information systems, findings highlighted that state level systems are absent and the capacity of state government institutions in collecting and analyzing information is low.
- Data collection responsibilities primarily lie at state and county levels, where data are currently widely collected on markets but only scarcely on the other topics of interest. Almost no nutrition information is collected, suggesting that policies cannot fully cover the four food security and nutrition dimensions.
- It is evident that information collected at state level is scanty and highly localized with inconsistencies observed over time and space; the unstandardized and uncoordinated collection of information pinpoints a need for a more systematic collection and analysis. Moreover, there is a general lack of clarity amongst the various actors as to who should collect, store, share, and aggregate data.



## **II) Findings on gaps in coordination and harmonization of food and nutrition security information systems**

- Existing key food and nutrition information systems are mainly managed by international organizations, showing weak capacities and low government ownership and leadership in the management of data collection and analysis.
- Several actors collect, analyze and produce the same information (e.g., market prices), showing a serious lack of collaboration, standardization, and harmonization of information systems. Therefore, duplication and similarities in data collection and type of information produced are observed.

## **III) Findings on gaps in information produced for decision making**

- Although national information systems break down the information state by state and data are collected in the states and counties, very little corresponding information is disseminated, aside from market updates at state and national levels. There is no information flow and dissemination at state level. The low level of feedback to state policy-makers severely constrains their planning and policy capacities. The assessment showed that although data collection and enumeration skills exist, the capacities to manage data (i.e., entry, analysis and archiving) are minimal.
- A detailed analysis of the type of information provided to government at national and state levels reveals that food security situation updates are the most common and widely circulated information products produced by the government. These are often extensively used for policy and decision-making purposes. However, the quality of such bulletins is very poor. IPC reports and maps are perceived to be of better quality in comparison; they are rated to be of fair quality. In addition, the level of dissemination of this information is very poor, particularly when considering the different institutions and the states. Nevertheless, the government widely uses IPC reports for several policy purposes, pointing to the need to improve their quality and outreach.
- Almost all states noted the presence of food and nutrition security clusters or forums. On average, there are several such meetings per year in each state to validate food and nutrition security information. However, these are mainly IPC meetings or humanitarian forums. It is important that these platforms for discussion become more focused on broader food security and nutrition issues.

Based on the capacity strengths and gaps in data collection and analysis, three major areas of action were identified as follows. These proposed actions will be validated with key stakeholders in the government of South Sudan and agency and NGO partners, prior to preparing an action plan for capacity development of government institutions engaged in analyzing and combatting food insecurity<sup>1</sup>:

---

<sup>1</sup> These proposed actions were based on the situation as of end November 2013. Due to the outbreak of conflict in December, these actions may need to be adjusted if major changes occur in the capacities of the institutions

**I) Establish clear procedures for data collection, management and dissemination of information**

- Establish collaboration mechanisms between county, state and federal levels to promote systemic and standardized data collection guidelines, processes and methodologies for each type of data. This would ensure that responsibilities and roles are clarified and properly shared at all levels and that the information flows from county to state to central level (and vice versa).
- Set up a data management system for data storage to foster sharing of information between county, state, and national levels (South Sudan may want to explore the possibility to develop a single national database for food and nutrition security data).
- Strengthen capacities to collect, aggregate, store and manage data, and to produce and disseminate information reports.
- The capacity assessment focused mainly on food security (e.g., agriculture and livestock ministries were interviewed), thus there is a need to further review and analyze existing nutrition and health data collection systems. It is recommended to review these systems with the Ministry of Health (MOH) and the United Nations Children's Fund (UNICEF).

**II) Establish clear mechanisms for coordination and harmonization of existent information systems**

- The promotion of standardized and harmonized methodologies on food and nutrition information systems, as well as the establishment of a centralized national database to store data and foster sharing of information, is advisable. This would help in ensuring coordination among actors at all levels.
- The World Food Programme (WFP), FAO and other agencies should jointly work to strengthen the capacity of the Food Security Council (FSC) to ensure government ownership and leadership; this effort should be coordinated by the FSIN.
- Efforts should be made to synchronize and harmonize the data collection on household food security and prices supported by the World Bank and WFP to provide a more comprehensive and comparable picture across both urban and rural areas. Also, WFP should work closely with the government to ensure that the design of the monitoring system is consistent with the National Bureau of Statistics' (NBS) enumeration guidelines. This would pave the way for stronger government ownership and facilitate capacity building of government staff.

**III) Establish clear procedures for better use of information for decision making**

- The quality of food and nutrition information provided to policy makers as well as the level of dissemination of informative products should be enhanced to better support the government and ensure sound and evidence-based policies.
- Coordination mechanisms or fora are important to ensure validation of information by different stakeholders. They can foster dialogue that is critical to improve

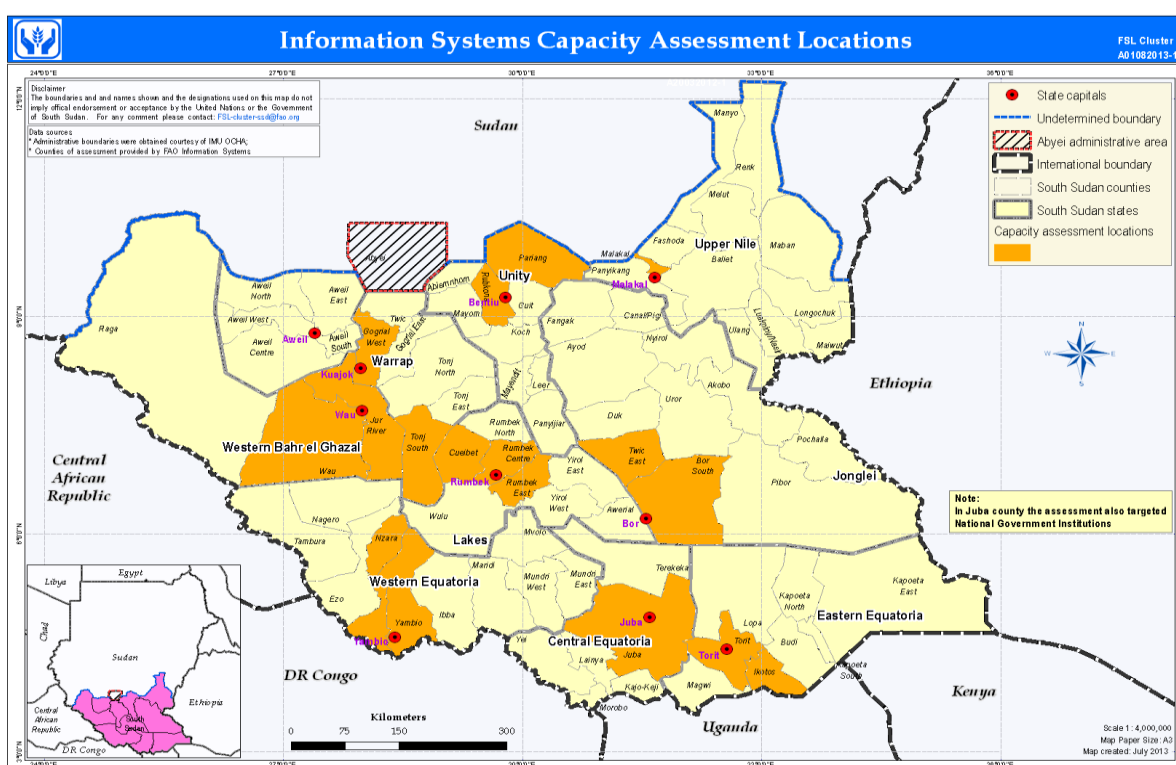
---

mentioned herein. Similarly, the plan to hold a stakeholder consultation and develop an action plan will be delayed until the situation is resolved.

---

formulation of food security and nutrition policies and strategies based on more reliable information. Fora need to be strengthened in the states, building upon existing ones. Government ownership should also been promoted, therefore it is advisable that ministries lead these discussions.

- Clear policy guidance from the national level should be provided to the states to enable them to take the lead in these coordination mechanisms and to ensure the inclusiveness of all stakeholders (civil society, donors, etc.).



## Introduction to the FSIN

The FSIN aims to strengthen food and nutrition security information systems and networks at the country and regional levels to feed into greater evidence-based decision making by all actors, including governments, NGOs and the private sector.

The FSIN's three core objectives are to:

- Establish a global Community of Practice (CoP) to share knowledge, best practices and lessons learned among national, regional and global institutions and individual food security professionals;
- Provide access to demand-driven, harmonized sets of standards, methods, tools and indicators for food and nutrition security data collection, analysis, communication and decision making; and
- Strengthen country and regional level capacities for food and nutrition security data collection, analysis, communication and decision making

In order to support decision-making processes at country level, the FSIN not only aims to strengthen national information systems, but also to enhance government capacities to use standardized methodologies to collect, analyze and disseminate food and nutrition information. Initial principles for FSIN's role in capacity development are listed in **Annex 1**.

FSIN country support is demand driven and is based on donor priorities or on-going Capacity Development (CD) activities. Engagement in South Sudan was encouraged by a request from South Sudan authorities and by exploiting the opportunity of the new European Union (EU)-funded FAO South Sudan Project: "Agriculture and Food Information Systems (AFIS) Project". This Project is aimed at the institutionalization of robust food and nutrition security information systems as well as building capacities both at the national and state levels for food security information generation and analysis. In this framework, the FSIN has supported the capacity assessment exercise of government institutions in using standardized methodologies and managing food and nutrition security information systems. A methodology has been developed by the FSIN to support countries and regions in mapping their needs for collection, analysis and communication of food and nutrition security information. The methodology is flexible enough to be tailored to specific countries' contexts to conduct the mapping exercises. This enables stakeholders to get a better overview of what information sources are already at their disposal, and how these can be improved to better suit their decision-making needs. In addition, an assessment of the institutional environment in which information activities and information use takes place – especially how the generated information feeds into the national level government decision-making processes – is conducted through the capacity assessment questionnaire based on the FAO capacity development framework toolkit.



## Background Analysis on South Sudan

The political arena in South Sudan is very supportive of food security and responsive to food security needs. However, with the newly formed government, the framework for food security policies at the national and at the level of the ten states is very complex and evolving. The Agriculture Sector Policy Framework (2012/2016), the South Sudan Development Plan (April 2011), the Transitional Constitution of The Republic of South Sudan (RSS) (2011), and the South Sudan's Vision 2040 are the major guiding frameworks for achieving food security for all the people of the RSS which is recognized as a major political goal and national priority for the government. The government worked extensively with development partners to formulate strategies and initiatives to address food security issues. Food security information to date has been largely collected, analyzed and managed by humanitarian and development agencies. In order for the government to take the lead in addressing food insecurity and malnutrition, decision makers need to be guided by rigorous food and nutrition security information and analysis, and have the capacities to understand and use this information.

### Government-led Food Security Bodies

At the time of the assessment, the Ministry of Agriculture, Forestry, Cooperatives & Rural Development (MAFC&RD) and the Ministry of Animal Resources and Fisheries (MARF) were the two leading institutions for food security planning, policies and strategies formulation to address food insecurity. In July 23, 2013, they were combined into the Ministry of Agriculture, Forestry, Tourism, Animal Resources and Fisheries & Cooperatives and Rural Development (MAFTARFC&RD) by presidential decree. Other institutions, such as the MoH, the NBS etc., are also contributing to food security, according to their mandates. In addition, the federal government has established the FSC supported by the Food Security Technical Secretariat (FSTS) and Food Security Units in key government institutions. The FSTS, housed at the NBS, is the national center for food security information compilation and analysis, whose role is to provide policy and planning advice to the FSC on food security related issues. At state level, mandated technical institutions are delegated to contribute to increase food security in their states. The MAFC&RD and the MARF were the key federal institutions collaborating and coordinating with between different state level counterpart Ministries and relevant food security stakeholders. Currently FSTS and the Livelihood Analysis Forum (LAF) are conducting government food security analysis with the support of donors and the international community. Therefore, there is still a need to strengthen these initiatives as well as to enable the government to independently conduct food security analysis for sound and evidence based policy making.

The establishment of the FSC and the FSTS was facilitated by the EU-funded "Sudan Institutional Capacity Programme: Food Security Information for Action (SIFSIA)" (2006-2012). The programme aimed at building the capacities of the government in integrated and coordinated food security information and policy action. However, even though SIFSIA

achieved several major outputs, its support was primarily delivered to the RSS with a focus on compiling the national food security information at the federal level. On the other hand, the state level food insecurity issues and coordination were not addressed; only limited outreach was provided to support a food security information system at the state level. Therefore there is a great need for expanding the scope and representativeness of food security information, and increasing state level food security information systems.

## Capacity Assessment Approach

The institutional capacity assessment seeks to provide an overview of the current status of the national and states' capacities, development opportunities and capacity constraints in the areas of food and nutrition analysis, response planning and decision making. There is a particular focus on the capacities in gathering data, analyzing and reviewing food security information, and planning, budgeting, and monitoring food security policies and strategies. The capacity assessment approach started with identification of the main stakeholders working on food security issues and the main policies, plans and strategies that contribute to food security. Moreover, past and current processes for capacity development in the country were examined, as well as political commitments, visions, policies and legal structures aimed at achieving food security in South Sudan.

The assessment used both the FSIN methodology and the FAO Capacity Development Approach to develop the questionnaires, tailoring the tools to the AFIS Project objectives and to the country context to identify capacity development needs. A four-day workshop was organized with support from the FSIN Secretariat team members Alexis Hoskins (WFP) and Lavinia Antonaci (FAO), and FAO's Capacity Development Officer, Sally Berman. Workshop participants were drawn from FAO field staff, Food Security and Livelihood Cluster members, NGOs from the field, and staff from WFP South Sudan and field offices. A total of 25 participants were trained on the use of capacity assessment tools and techniques. The actual field assessment was conducted from 17 June to 7 July 2013. The institutions that were targeted for the assessment were food security related line ministries and Non-State Actors (NSAs) in the ten States and at national level where the AFIS Project will be implemented. The questionnaire comprised three main sections aimed at assessing capacities of national and state actors:

1. Mapping of existing food and nutrition security information systems at country level (focus group discussions);
2. Questionnaires on the capacities of different decision makers to use information systems for different purposes (bilateral interviews); and
3. Questionnaire on the existence of food and nutrition security information validation mechanisms (focus groups discussions).

In addition to this comprehensive assessment, a high-level mission to South Sudan was conducted by Joyce Luma (WFP) to contribute to the strategic discussions on strengthening food security information system capacities under the auspices of FSIN. Meetings were held with the several government departments, FAO, UNICEF, the World Bank, the United States Agency for International Development (USAID), the Famine Early Warning Systems Network (FEWS NET) and a broad range of stakeholders in Juba and Malakal to understand processes and systems in place for collecting, analyzing and disseminating food security information and determine opportunities for collaboration.

## **Capacity Assessment Methodology**

### **Map Food Security Information Systems Tables**

In order to analyze the existing food security information systems both at national and state level, the FSIN methodology for mapping food and nutrition security information systems was used. The mapping exercise aims at prioritizing capacity development needs to improve food and nutrition security information with a particular focus both on the production and use of such information for decision making. This is achieved by preparing a thematic map of existing food and nutrition security information systems, activities, services and products in order to identify strengths, weaknesses and gaps that can be addressed through institutional capacity development activities.

The methodology included the adaptation of the FSIN standard tools and questionnaires to the AFIS project needs and activities. The mapping tools were simplified to two tables, primarily focusing on the production aspects of food security information. These tables provide useful insight when designing the capacity development interventions, particularly regarding the management of food security information and collection of data. Of the two mapping tables, one is used to list the food and nutrition security information systems; the second is designed to explore the quality of each of the systems listed in terms of coverage, frequency, timeliness, and usage. Focus group discussions were used to fill in the tables to avoid bias in the answers received and information gathered. The focus groups comprised staff from three ministries (formerly MARF and MAFC&RD and MoH), as well as staff from the Food Security and Livelihood Cluster and the Nutrition Cluster; and NGOs.

### **Capacity Assessment questionnaire**

In order to assess the capacity of government institutions to use existing information systems identified through the mapping exercise, a separate set of questionnaires was developed which was more focused on the usage of information and on existing coordination mechanisms to validate food and nutrition information.

## Capacity Assessment Main Findings

The capacity of national and state government food security institutions in managing food security information systems and using standard methodologies was assessed and analyzed. The following sub-sections present main findings of each of the institutions assessed and on major information systems present at national and state level.

The South Sudan food security information systems can be characterized as a collection of systems, often fragmented and uncoordinated, and mainly designed by international humanitarian and development agencies to suit short-term needs. Apart from being involved in information systems and analysis frameworks initiated and supported mainly by international organizations such as FAO and WFP – including the Crop and Livestock Market Information Systems (CLiMIS), the Integrated Food Security Phase Classification (IPC), Crop and Food Security Assessment Missions (CFSAM) and the Food Security Monitoring System (FSMS) – government capacities to produce and disseminate information is limited. The exercise highlighted that a number of assessments and reports produced by food security government bodies often do not reach decision makers at either national or state level.

The assessment confirms that key systems are driven at national level and are mainly managed by international organizations, which suggests a lack of capacities at state level to produce information. Sources of information received by state, type of Ministry, and type of position within the two Ministries analyzed (State MAFC&RD and State MARF) show that generally, government food security institutions such as FSTS and NBS are the least common sources of food and nutrition security information.

### Findings on Government-led food security bodies

This section presents key findings of the capacity assessment of national, state and county government institutions dealing with food and nutrition security information in South Sudan. Individual interviews were conducted with county, state and federal staff from the MAFC&RD and MARF. Individual interviews were also conducted with national level government institutions, particularly the NBS; the FSTS and the LAF in order to determine the type of food and nutrition security information they are collecting and disseminating. This section also presents recommendations on the possible ways to support the relevant institutions in strengthening their capacities on FNS information systems.

#### **Ministry of Agriculture, Forestry, Tourism, Animal Resources and Fisheries & Cooperatives and Rural Development (MAFTARFC&RD)**

The Ministry is currently the lead agency for food security and has the mandate to coordinate food security activities including FS information both at national and state levels. As mentioned, at the time of the assessment the MAFTARFC&RD was divided into the MAFC&RD and the MARF. Therefore, specific attention was given to understanding the capacity of these two ministries in collecting, analyzing and disseminating information

related to their respective technical mandates. This assessment specifically analyzed the types and qualities of information that was being collected by the two ministries, methodologies for collecting such information, and suggestions on how the ministries could expand the type of information they collect and disseminate.

The MAFTARFC&RD plays a leading role in the states by chairing the Food Security and Livelihood Cluster. There is scope at state level to expand its role in coordinating FS information. The Directorate of Planning and Programming hosts databases for the ministry including the agriculture and CLiMIS databases. Although these databases are recognized as important in decision support, they receive limited resources and technical support, leading to minimal use.

In general, market prices for both livestock and crops are the most widely collected, followed by livestock disease related information. Most of the information is currently being collected at state and county level. This provides an opportunity for capacity development at these levels in data collection. It is worth noting that less livestock production and nutrition related information is collected by the state ministries. There is a low level of collection of meteorology data at county level compared to state level. Different levels of data collection are observed across states. While market prices are widely collected across all the states, 7 out of the ten states (Western Equatoria, Eastern Equatoria, Lakes, Warrap, Central Equatoria and Unity states) are weak in collecting types of data other than market data. The need for strengthening data collection capacity within the states to enhance evidence based and informed decisions is evident.

An in-depth analysis of the quality of the information being collected shows that in most cases the data are rated poor to barely acceptable for decision making or meaningful analysis. It is important to note that there is no system in place to ensure that county and state level data are shared and stored at single point, whether at state or national level. There is need for an investment in a system to ensure data flow from county to national level to enable national level analysis while supporting state level disaggregation. It is worth exploring ways and means of strengthening collaboration of state ministries and the national institutions in transmission of data collected at state levels to allow national level availability of the respective information and data sets. Indeed, processing and dissemination of the data collected by the two ministries is significantly poor and inconsistent. Despite reports that ministries regularly collect crop and livestock production data, meteorological data and market data, almost no corresponding, regular report is issued for dissemination of the information to a wider audience. Market updates are the only reports produced at state and national level. Significant information is provided by international agencies. Key factors which contribute to this situation include: (i) lack of systematic and standardized data collection methodologies that the ministries use to collect data within or across state for each type of data. As such there are inconsistencies in the data over time and space; (ii) limited capacity to archive and retrieve data sets within the ministries at all levels (county, state and national); and (iii) limited capacity both in human resources and competencies to analyze and present information. **Annex 2** provides a summary of levels of data collection by type and state.



## **General Secretariat of the Food Security Council (FSC)**

The South Sudan FSC was established by Presidential Decree in October 2008 with the mandate to ensure the overall alignment and harmonization of food security initiatives of the various line ministries and commissions; and to provide guidance for national food security policies and programmes. Members of the Council are drawn from ministries that have a role in food security. The chairperson of the Council is the President of the Republic of South Sudan while the Secretary of the Council is the Minister of Agriculture, Forestry, Tourism, Animal Resources and Fisheries.

The FSC is supposed to be supported by a Secretariat which is managed by a Secretary General (FSC SG) whose mandate/functions include managing the overall activities of the Food Security Council and organizing and facilitating meetings, among others. However, due to competing demands in the austerity period, the FSC SG was not appointed until February 2013. Subsequently, the FSC SG submitted an institutional capacity development request to FSIN via FAO and WFP.

One of FSC's roles is to provide food security information to inform cabinet decisions. This unit aims to consolidate food security analysis and share this information for decision making. WFP, FAO and other agencies should jointly work to strengthen the capacity of the FSC, in line with the FSIN's objectives to promote inter-agency collaboration in supporting national institutions. The assessment highlighted the need to broaden the FSC information beyond food security to include nutrition. UNICEF could therefore play a role in strengthening FSC capacity. A senior MoH official would possibly co-chair the FSC meeting together with the Food Security Council Director. To ensure that the joint FAO, UNICEF and WFP support to the Council is functional, it is proposed that the three agencies work together with the council to produce a joint food security and nutrition report every quarter (or semester). This joint report would be tabled to the Council of Ministers and would be based on a synthesis of food security and nutrition information from the monitoring systems and agencies' analyses.

## **Food Security Technical Secretariat (FSTS)**

The FSTS was established in June 2008 with technical and financial support from the SIFSID Programme. The Secretariat is based in the NBS and is the technical arm of the FSC. FSTS is tasked with the collection, compilation, storage and analysis of food security data, and the dissemination of processed information to government institutions and other stakeholders to inform decisions related to food security in South Sudan.

The Secretariat provides information on the food security status of South Sudan on a regular basis through the production of food security bulletins, agro-meteorology bulletins, policy briefs and special reports to inform the public and decision makers of prevailing food security situations in all ten States. The Secretariat periodically organizes policy briefing meetings in Juba for national Government and State officials to support their decision making on matters related to food security. The Secretariat is also responsible for

coordinating activities of food security with major government institutions, UN and other agencies and all stakeholders within South Sudan.

A detailed analysis of the quality and the outreach of information products produced by the Secretariat showed that situation updates on crop production, crop and livestock markets, pests, agriculture, rangeland, and agro meteorology are the most common products disseminated at country level and in all states. This illustrates that there are significant government efforts to produce and circulate food security bulletins to stakeholders. However, situation updates are reported to have the poorest quality compared to other types of reports such as FSMS and IPC products, meaning that they are barely satisfying their purpose. The need to improve the quality of frequent information such as crop, livestock and market bulletins is clear. Thus, there is scope for capacity building to strengthen the existing capacities of government and inter-ministerial bodies such as FSTS to analyse and produce better food and nutrition security information.

### **The National Bureau of Statistics (NBS)**

The NBS has the overall mandate to collect and analyse data on economics, trade, food security and overall well-being of the population. However, the NBS has very limited systems or capacity for the collection and analysis of data across various sectors. With the World Bank's assistance, NBS is collecting data on economic statistics to calculate the inflation rate, the consumer price index and other economic indicators. Presently, data are collected in three states. In addition, every three months NBS coordinates the implementation of the IPC analysis which is conducted by the LAF.

### **Livelihoods analysis unit (LAU)**

The Livelihoods Analysis Unit (LAU) is a small unit within the Department of Monitoring and Evaluation (M&E) in the NBS. The LAU is responsible for organizing the quarterly LAF meetings. The LAF meetings bring together food security and livelihoods partners that include International & National NGOs, UN agencies and Government partners where the IPC framework is used in the analysis of the food insecurity situation in South Sudan. The IPC is a standard tool for classifying food insecurity for informed decision making. The LAU received financial and technical support from the SIFSIA project to enable it to carry out its LAF activities. After the closure of SIFSIA, the Food Security and Livelihood Cluster has supported IPC analysis. The assessment showed that IPC reports are of a relatively better quality compared to food security bulletins and updates. However, it must be noted that the level of dissemination and outreach of this information is very low and needs to be extensively scaled up to effectively support policy makers at both national and state level.

## **Findings on Existing Food Security Information Systems**

Focus group discussions were held to map all existent food and nutrition security information systems at state and at national level as well as to analyze their quality in terms of several variables. This deeper analysis of food and nutrition information systems is

relevant in order to understand what is available to support government institutions in decision-making activities, and to strategically build their capacities to utilize already existing methodologies on food and nutrition information systems. The variables that are considered in the analysis of the quality of these systems are: coverage, both in data collection and dissemination of the final product, frequency, timeliness (measured on a scale of 1 to 4 with 1 being not timely and 4 very timely), reliability (measured on a scale of 1 to 4 with 1 being not reliable and 4 very reliable), purpose of the use, and the key users.

**Annexes 4 and 5** respectively present a list of all food security information systems in each state and at national level, and their reliability and timeliness scores.

Currently, there are at least ten different commonly known food security and nutrition systems that generate and analyze food security and nutrition information in South Sudan. Many of these systems are closely linked to specific agencies for agency-specific needs and mandates. To date, most of the key information systems on food security and nutrition are led by international organizations. Such an absence of state-driven food and nutrition security information systems implies a low capacity at state level to produce information. The main food and nutrition information systems or sources are: CLiMIS, CFSAM, FSMS, and Agriculture and Livestock Situation Analysis (ALSA) and the IPC. Each of these different systems is briefly described below:

1. Crop and Livestock Market Information System (CLiMIS). CLiMIS is led by RSS and FAO and was funded under SIFSIA. CLiMIS does not include nutrition information. Similarly, its market information coverage was limited only to major market centers. Although it is reported that market data are released on a weekly basis, it should be recognized that the timeliness and reliability scores indicated are 2 and 1 respectively. Moreover, the assessment reported the presence of several market information systems carried out by different institutions including FAO, WFP, FEWS NET, World Bank, and Government. This suggests a need to reduce duplication of information and promote a standardized and harmonized approach.
2. Crop and Food Security Assessment Mission (CFSAM) report. This report is co-led by FAO and WFP with participation from Government ministries and donor observers. It is conducted once a year in October/November and is not usually an "information system". Rather, it is designed to respond to a government request when there is a perceived production shortfall; it should not replace the government system. However, since the Government of South Sudan does not yet have surveys in place for estimating crop production, for several years, the joint FAO/WFP CFSAM has provided crop production estimates. The CFSAM, undertaken as an audit when there is a standing crop, provides clarity on the level of food production, food supply including the capacity to import and the overall household food security situation. For South Sudan, due to the lack of a Government data collection and analysis system for crop production and food security estimates, the CFSAM is the main tool for developing these estimates.

Weaknesses and limitations of the CFSAM include its focus on standing crop production only and hence exclusion of tubers and fish-related contributions to household's diet. The coverage of data collection and dissemination of the reports is at national, state and county levels. The main users of these reports are donors, UN agencies, NGOs and government institutions who apply this information to policy and planning, and emergency responses. The total average for reliability of this product is 2 out of 4. In terms of timeliness the average score reported is 1.

3. Food Security Monitoring System (FSMS). FSMS is a collaborative activity led by WFP with various RSS Ministries plus, FAO, UNICEF and the United Nations High Commissioner for Refugees (UNHCR). FSMS reports are produced three times a year, in March, June and September. FSMS data feed into both the IPC and the Annual Needs and Livelihoods Assessment (ANLA) reports. FSMS reports include overall food security status, food consumption, agriculture (crops cultivated), income sources and expenditures, purchasing power, the Coping Strategy Index, market conditions, Middle-Upper Arm Circumference and child nutrition; they do not take into consideration the contribution of livestock and fish into household food and nutrition security. The coverage in data collection is household, payam, county, state and national levels while the dissemination coverage of the reports and bulletins is at county, state and national level. The main users are donors, UN, government institutions and NGOs; the main application of this information is early warning and emergency response. The total average reliability score of this product is 3 while in terms of timeliness the total average is 4. These marks make the FSMS the most reliable and timely information compared to other food security information systems analyzed in this assessment. It is recommended that WFP work closely with the NBS to ensure that the design of the FSMS is consistent with NBS enumeration guidelines. This would make it easier for the government to infer to the FSMS data for certain indicators and pave the way for stronger government ownership and transfer of the system, as in other countries. WFP would emphasize capacity building of government as it implements the FSMS.

An additional effort to strengthen government capacity in information systems is the potential collaboration between the World Bank and WFP. The World Bank is strengthening the data collection and analytical capacity of the NBS by piloting with the government the collection of economic data – initially in three states. An urban household monitoring system is implemented three times a year and prices are monitored more frequently. WFP collects prices in rural areas as part of the FSMS three times a year. Consideration should be made to harmonize these systems to provide more comprehensive data for South Sudan. In particular, as the WFP-led and the World Bank-supported systems use the same food consumption modules, efforts should be made to synchronize the data collection in a way that enables the data from the two systems to be combined. Rounds

could be conducted almost during the same period, while mindful that the systems rely on the same government staff.

4. Integrated Food Security Phase Classification (IPC). The IPC was first introduced into South Sudan through the SIFSIA project and is led by a consortium of eight global partners plus RSS. IPC analyses are conducted four times a year: March, June, September and December. The NBS's LAU is the institutional home of the IPC. Coverage both in data analyzed and product dissemination is at the three main administrative levels (national, state, and county). Government, UN, NGOs, and donors primarily use this information for early warning and emergency responses. Their quality in terms of reliability and timeliness is reported as 3. As already noted in the previous section, IPC outreach should be improved.
5. Agriculture and Livestock Situation Analysis (ALSA). The ALSA is mainly conducted by the Food Security and Livelihood Cluster, with the support of NGOs for data collection. These assessment reports and bulletins are quarterly and cover from household to state administrative levels for data collection and from county to national levels for dissemination coverage. The main users are donors, government, UN, and NGOs for policy and planning, early warning, emergency response and M&E. On average, reliability and timeliness are reported as 2 out of 4. This suggests scope to improve reliability of the analysis due to the extensive use of ALSA for policy purposes.
6. SMART Surveys, Nutrition Monthly reporting system and ad hoc nutritional surveys. These documents are produced by the UNICEF-led Nutrition cluster. The surveys cover only a few regions of the country and are mainly geared towards the needs of UNICEF and/or the Nutrition Cluster. In terms of health and nutrition information, the analysis highlighted that the Nutrition Cluster carries out SMART surveys on a bi-annual basis with the support of MoH, UNICEF, and NGOs.
7. Annual Needs and Livelihoods Assessment (ANLA). This is led by a consortium of stakeholders including WFP, FAO, UNICEF and RSS and is conducted once a year during November and December.
8. FEWS NET's Scenario-based Analyses. These analyses are FEWS NET-led and use scenario developments to forecast the most likely FNS outcomes 6 to 12 months in advance.
9. Mid-Season Crop Assessment. This is led by FAO and WFP as a one-off assessment and is usually conducted in August.
10. Food Security and Livelihood Vulnerability Analysis. This is led by the Food Security and Livelihood Cluster. This is mainly a 4W-database (Who Does What,



Where and When) information system and is specifically oriented towards emergency needs assessments and hence interventions.

11. Returnee and Internally Displaced Person (IDP) movement tracking reports. These bulletins are produced on a weekly basis; data collection ranges from household to national levels while dissemination of the bulletins is at national, state and county levels. These bulletins are used by donors, UN agencies, NGOs and government for early warning and emergency response purposes.

## **Findings on validation mechanisms to discuss food and nutrition security information**

**Annex 3** summarizes the findings from the focus group discussions carried out in each state to learn about the presence of groups, clusters or fora where food and nutrition security information is being validated and discussed among multiple stakeholders.

All states except Central Equatoria responded positively on the presence of such fora. The most probable reason for the absence of a state level institutionalized forum in Central Equatoria is the presence of the national Food Security and Livelihood Cluster, which is a robust discussion platform which is well attended by government staff.

In analysing the number of meetings convened in the last year to discuss food and nutrition security information, it is observed that an average of one meeting was held per month in four states (Jonglei, Upper Nile, Northern Bahr El-Ghazal, and Western Equatoria). In the other six states, an average of three meetings per year is reported. Moreover, in each state four meetings are held per year to validate food and nutrition security information; indeed these are held to compile and certify IPC analysis which is conducted on a quarterly basis.

The only significant fora found both at national and state levels are the humanitarian clusters. Indeed the humanitarian focus of the meetings is one of the reasons why the bilateral interviews in MAFC&RD and MARF have shown the lack of such coordination platforms to discuss purely food security issues. This implies the opportunity to build upon already existing coordination structures and broaden the participation of food security stakeholders as well as to expand the extent of the discussions to wider food security issues.

Interestingly, findings suggest that in all states apart from Upper Nile there is a positive desire to maintain existing coordination platforms or to create new ones, which shows a willingness and awareness of the need for discussing and validating food and nutrition security information. Most probably, the negative response in Upper Nile is due to the fact that the existing forum is significantly dominated by the international community, while state food security stakeholders would prefer to have a local, government based leadership. This suggests opportunities for capacity development of state level government institutions to enable them to take the lead in such meetings.

Figures shown in Annex 3 highlight that there is an important presence of the international community with high participation of UN agencies, international organizations and NGOs, but it is worth noting that government staff and FS Advisors and members of Assembly Committees also frequently attend these fora. An interesting finding from the focus group discussions in all states is that UN agencies, International organizations and NGOs are not mentioned among the desired key stakeholders that should be present at future meetings. This reiterates the need to strengthen government capacities to organize and run such discussions. Good participation levels are reported for civil society groups such as Community Based Organizations and farmers' unions. On the other hand, in almost all states (eight out of ten), county directors do not participate in such fora. This is mainly caused by large distances, which coupled with lack of infrastructure and poor road conditions limit the mobility of county staff. This is particularly true in states such as Eastern Equatoria, Central Equatoria, Upper Nile, Lakes, and Warrap. In addition, in states such as Jonglei and Unity, insecurity is another cause of low attendance of county directors. Actions should be taken to enhance the attendance of these local institutions. Moreover, figures highlight the absence of donors from such fora in all states; this can be explained by the lack of states' representation. Also common to the fora in all states – due to their humanitarian nature – is the absence of the academic and private sectors.

Coordination mechanisms need to be established or renewed in the states, possibly building upon existing ones, to organize and hold regular discussion meetings. These need to be led by the ministries but also attended by civil society in order to foster multi stakeholder and inter-ministerial dialogues. Therefore it is advisable to build government capacities to establish these mechanisms and chair the meeting themselves.

## Conclusions and Recommendations

Based on the capacity strengths and gaps in data collection and analysis at different levels (Agricultural Information systems, Early Warning Systems (EWS), Nutrition Information systems), the following three areas were identified, respectively, in terms of gaps and actions:

### **I) Identification of gaps in data collection and coverage**

- Although data are collected at state and the county levels, the analysis shows that main information systems are run at national level. Therefore, it was found that while data collection and enumeration skills exist in the states, the capacities to manage data (entry, analysis and archiving) are minimal and almost no reports or bulletins are produced at county level.
- Data collection responsibilities primarily lie at state and county levels where data are currently widely collected on markets but only scarcely on the other topics of

interest. Nutrition data are usually not collected apart from SMART surveys that are produced on a bi-annual basis. However, it must be noted that this area was not fully analysed in light of the general lack of state-level nutrition information systems.

- Evidence shows that data collection activities, even on price data, are not systematically or consistently collected both at state and national levels. Furthermore, there is a general lack of clarity amongst the various actors as to who should collect, store, share, and analyse data.

## **II) Identification of gaps in coordination and harmonization of food and nutrition security information systems**

- Key systems are driven at national level and are mainly managed by international organizations, showing weak capacities at national and state government levels to produce information. Information systems are therefore oriented in terms of their scope and content towards the interests of the agencies that generate information, particularly to support response programming. Sources of information received by each of the ten states assessed, by type of Ministry (formerly MAFC&RD and MARF), and type of position within the two Ministries analysed show that generally, FS government institutions such as the FSTS-(the technical arm of the FSC) and the NBS are the least common sources of food and nutrition security information.
- Similarities and duplication in data collection and type of information produced are observed. Standardized or harmonized methodologies by food and nutrition information systems, and a centralized national database to store data and to foster sharing of information, are lacking.

## **III) Identification of gaps in information produced for decision making**

- Analysis of the type of information provided to national and state government and ministry officials shows that very little information is transmitted from national to state and county' institutions. This suggests that their decisions are not always based on evidence.
- Food security bulletins and situation updates such as market updates produced by government ministries are the most common information products circulated and generally used for policies and decision-making purposes, especially in MAFC&RD. The quality of such bulletins is very poor, partly due to poor quality of data collected.<sup>2</sup>
- IPC reports and maps are of better quality in comparison although of fair quality. The level of dissemination of IPC maps and reports is very poor, particularly when considering the different institutions and the states. Generally, government staff

---

<sup>2</sup> The findings emerged from an analysis of the ratings of key stakeholders on the use/availability, reliability and timeliness of different types of information, on a scale of 1 (lowest) to 4 (highest).

members, particularly in MAFC&RD, extensively use IPC reports for several policy purposes, pointing to the need to improve their quality and outreach.

- The FSMS is the most reliable and timely compared to the other information systems analysed. However, as WFP is the lead institution conducting this exercise it will need to work closely with the NBS to ensure stronger government ownership of the system.
- Limitations in the number and quality of information systems indicate the poor level of information available for credible policy making.
- Evidence suggests that there is a general lack of fora where food security information are validated and discussed among key stakeholders to support policy decisions. It was found that the only significant fora both at national and state levels are the humanitarian clusters.

### **Envisaged potential actions to address the following gaps**

Based on the capacity strengths and gaps in data collection and analysis, the following three areas of action are proposed:

- I) Addressing gaps in data collection & management:** to address sectorial gaps in terms of information at different levels (Agricultural Information systems, EWS, Nutrition Information systems):
  - WFP, FAO and other agencies should jointly work to strengthen the capacity of the FSC; this effort should be coordinated by the FSIN.
  - Efforts should be made to synchronize the data collection activities supported by the World Bank and WFP on household food security monitoring to provide a more comprehensive and comparable picture across both urban and rural areas. Also, WFP should work closely with the government to ensure that the design of the monitoring system is consistent with the NBS enumeration guidelines. This would pave way for stronger government ownership and eventual transfer of these systems and facilitate capacity development activities.
  - Support should be provided to establish a national framework/system for information flow:
    - Based on available financial and human resources, support capacity development activities in data analysis, data handling and dissemination at federal level, while building capacities in technical skills for enumeration/data collection at state/county levels;
    - Promote systemic and standardized data collection guidelines, processes and methodologies for each type of data so that the information flow from county to state to central level (and vice versa) and information from different states is consistent and easy to aggregate and analyse;
    - Set up a data management system for data storage and foster sharing of information; and

- Increase capacities of staff in MAFTARFC&RD through training and coaching – not only for data collection and analysis, but also for reporting and disseminating informative products.

## **II) Addressing gaps in coordination/harmonization/standardization**

- Harmonization and complementarity of information systems:
  - Foster an enabling environment for harmonization and standardization of information systems by establishing an operational framework for national and state data collection and analysis which outlines the main types, purposes and frequency of information collected and how these should best be linked (e.g., the ANLA and FSMS feed into the CFSAM and the IPC analyses);
  - Support the establishment of new, or the strengthening of already existing, systems, initiatives and tools such as a Technical Working Group on Food and Nutrition Security Information to develop improved methodologies for technical analysis; and
  - Promote the establishment of an analytical framework for data collection and analysis and standardize/harmonize type of information and scope of information collected across and within states.

## **III) Addressing gaps to improve the use of information for decision making**

- Promote the establishment of a national framework/system for information flow, collaboration and management mechanisms between federal and state levels; and
- Improve the quality and scope of existing information systems for policy decision making:
  - Improve quality of information systems in terms of coverage, scope, consistency, frequency, timeliness to better support policy decision making by relevant national systems; and
  - Institute capacity building programs for national systems that integrate learning by doing approach to the existing information systems.



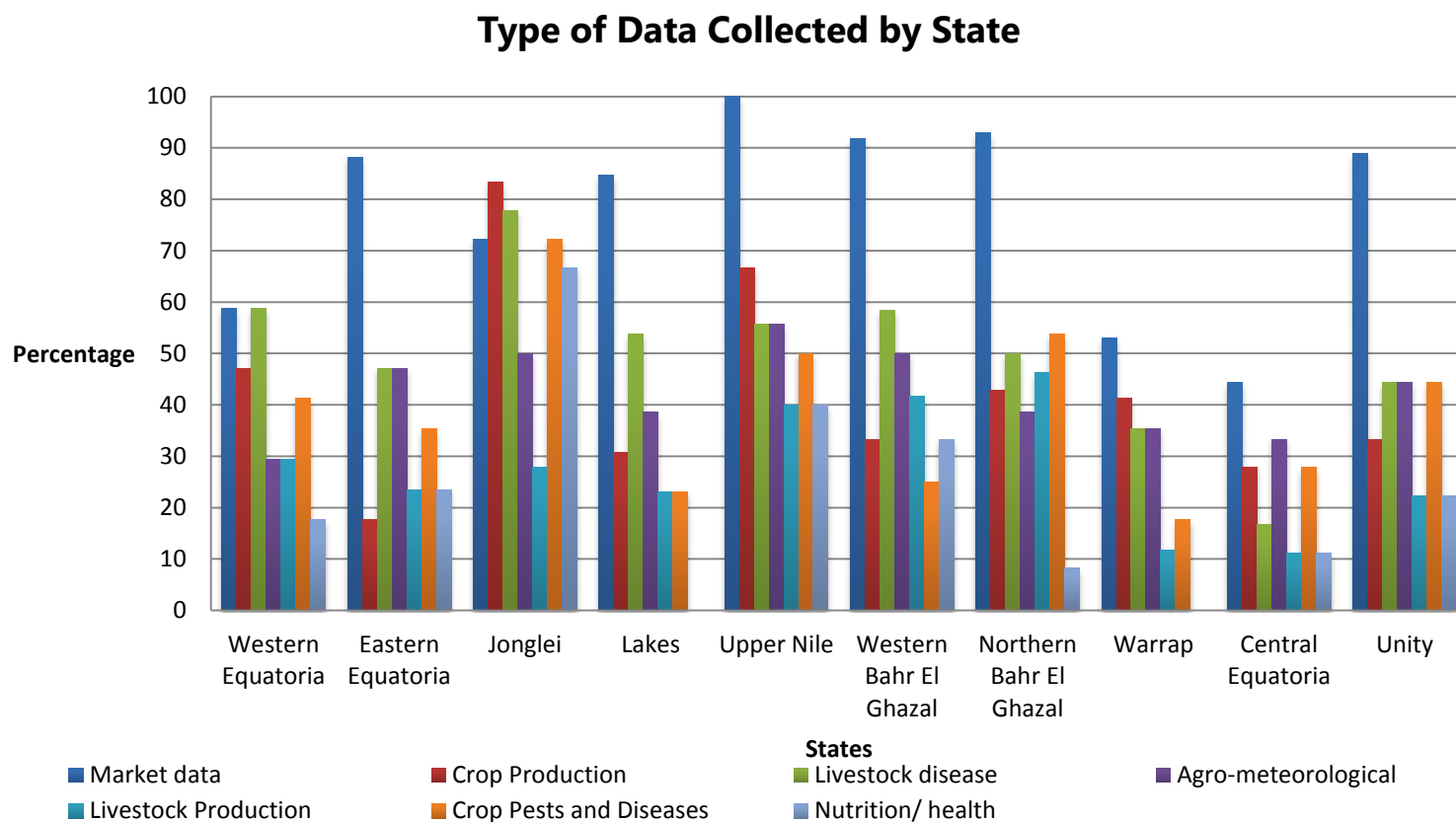
## Annex 1 – FSIN principles on capacity development and Possible Follow up activities

- **FSIN should not do capacity development itself, but rather facilitate capacity development** through the numerous initiatives that already exist.
- **FSIN should avoid fragmentation and duplication of efforts** by striving to improve coordination between the various players, institutions, and networks.
- **FSIN needs to be demand-driven**, meaning it will have to respond to capacity strengthening needs and demands originating from country and regional levels.
- **Adopt an integrated approach by addressing all four pillars of the food security definition and the key determinants of good nutrition.** Hence, nutrition should be an integral part of the scope of FSIN.

**Below is a list of possible follow up activities for capacity development:**

1. Map existing on-going capacity strengthening efforts.
2. Identify key priorities for capacity strengthening initiatives.
3. Identify key trainings to be offered and shared through a FSIN platform.
4. Identify the most appropriate training delivery means (e-learning, face-to-face, etc.), for certain situations.

## Annex 2 – Summary of levels of data collection by type and state



## Annex 3 – Focus Group Discussion Summary Table

State/ Key Parameter	Eastern Equatoria	Jonglei	Lakes	Upper Nile	Western Bahr El- Ghazal	Northern Bahr El- Ghazal	Warrap	Central Equatoria	Unity	Western Equatoria
Number of focus group discussions conducted	4	4	7	2	4	4	5	1	8	0
Current presence of groups, clusters or forums in which food and nutrition security information is being discussed and validated among a wide variety of stakeholders	Yes	Yes	Yes	Yes	Yes	Yes	Yes	No	Yes	NA
Desire to maintain existing or new coordination forums in which food and nutrition security information is being discussed and validated among a wide variety of stakeholders	Yes	Yes	Yes	No	Yes	Yes	Yes	Yes	Yes	NA
Current key stakeholders at Coordination Meetings										
Government agencies	Yes	Yes	Yes	Yes	Yes	Yes	Yes	Yes	Yes	NA
County directors	No	No	No	No	Yes	Yes	No	No	No	NA
UN agencies	Yes	Yes	Yes	Yes	Yes	Yes	Yes	Yes	Yes	NA
International organizations	Yes	Yes	Yes	Yes	Yes	Yes	Yes	Yes	Yes	NA
NGOs	Yes	Yes	Yes	Yes	No	Yes	Yes	Yes	Yes	NA
Private sector	No	No	No	No	No	No	No	No	No	NA
Academic institutions	No	No	No	No	No	No	No	No	No	NA
Donors	No	No	No	No	No	No	No	No	No	NA

Others (CBOs, FS Advisors/Assembly , Farmers union)	Yes	Yes	Yes	Yes	Yes	Yes	Yes	Yes	Yes	NA
<b>State/ Key Parameter</b>	<b>Eastern Equatoria</b>	<b>Jonglei</b>	<b>Lakes</b>	<b>Upper Nile</b>	<b>Western Bahr El-Ghazal</b>	<b>Northern Bahr El-Ghazal</b>	<b>Warrap</b>	<b>Central Equatoria</b>	<b>Unity</b>	<b>Western Equatoria</b>
Desired future key stakeholders at Coordination Meetings										
Government agencies	Yes	Yes	Yes	Yes	Yes	Yes	Yes	Yes	Yes	NA
County directors	Yes	Yes	Yes	Yes	Yes	Yes	Yes	Yes	Yes	NA
UN agencies*	No*	No*	No*	No*	No*	No*	No*	No*	No*	NA
International organizations*	No*	No*	No*	No*	No*	No*	No*	No*	No*	NA
NGOs*	No*	No*	No*	No*	No*	No*	No*	No*	No*	NA
Private sector	Yes	Yes	Yes	Yes	Yes	Yes	Yes	Yes	Yes	NA
Academic institutions	Yes	Yes	Yes	Yes	Yes	Yes	Yes	Yes	Yes	NA
Donors	Yes	Yes	Yes	Yes	Yes	Yes	Yes	Yes	Yes	NA
Others (CBOs, FS Advisors/Assembly, Farmers union)	Yes	Yes	Yes	Yes	Yes	Yes	Yes	Yes	Yes	NA
Current status of FS validation status										
Number of meetings convened in the last year to discuss FS information	6	12	4	12	2	12	7	2	12	NA
Number of meetings convened yearly to validate FS information	4	4	4	4	4	4	4	4	4	NA
Desired future status of FS validation status										
Number of meetings convened in a year to discuss FS information	12	12	12	12	12	12	12	12	12	NA

## Annex 4 – Existing food and nutrition information systems in South Sudan

Information System	Information Product	Coverage	End Product Coverage	Frequency	Purpose	Key users
<b>Central Equatoria</b>						
<b>Agriculture</b>						
Agriculture And Livestock Situation Analysis (ALSA)	Assessment Report	Household	County	Quarterly	Policy and Planning	Donors
	Bulletin	Payam	State		Early Warning	UN
		County	National		Emergency Response	NGOs
		State			Monitoring and	Government
Crop and Food Security Assessment Mission	Assessment Report	County	County	Annual	Policy and Planning	Donors
		State	State		Emergency Response	UN
		National	National			NGOs
						Government
Food Security Monitoring System	Assessment Report	Household	County	Quarterly	Early Warning	Donors
	Bulletin	Payam	State		Emergency Response	UN
		County	National			NGOs
		State				Government
		National				
<b>Integrated Phase Classification (IPC)</b>						
Integrated Phase Classification (IPC)	Bulletin	County	County	Quarterly	Early Warning	Donors
		State	State		Emergency Response	UN
		National	National			NGOs
						Government
<b>Market Information</b>						
Market (crop, livestock and other items) Prices	Bulletin	State	State	Weekly	Early Warning	Donors
	Raw data					UN
						NGOs
						Government
<b>Eastern Equatoria</b>						
<b>Agriculture</b>						
Crop and Food Security Assessment Mission	Assessment Report	County	County	Annual	Policy and Planning	Donors
		State	State		Emergency Response	UN
		National	National			NGOs
						Government
Food Security Monitoring System	Assessment Report	Household	County	Quarterly	Early Warning	Donors
	Bulletin	Payam	State		Emergency Response	UN
		County	National			NGOs
		State				Government
		National				



<b>Demographic</b>						
Returnee and IDP movement tracking	Assessment Report	Household	County	Weekly	Early Warning	Donors
	Raw data	Payam	State		Emergency Response	UN
		County	National			NGOs
		State				Government
		National				
<b>Health and Nutrition</b>						
SMART Surveys	Assessment Report	County	State	Bi-Annual	Early Warning	Donors
	Bulletin		National		Emergency Response	UN
						NGOs
						Government
<b>Integrated Phase Classification (IPC)</b>						
Integrated Phase Classification (IPC)	Bulletin	County	County	Quarterly	Early Warning	Donors
		State	State		Emergency Response	UN
		National	National			NGOs
						Government
<b>Market Information</b>						
Market (crop, livestock and other items) Prices	Bulletin	State	State	Weekly	Early Warning	Donors
	Raw data					UN
						NGOs
						Government
<b>Vulnerability Assessment and Mapping</b>						
Food Security Monitoring System	Assessment Report	Household	County	Quarterly	Early Warning	Donors
	Bulletin	Payam	State		Emergency Response	UN
		County	National			NGOs
		State				Government
		National				
<b>Jonglei</b>						
<b>Agriculture</b>						
Crop and Food Security Assessment Mission	Assessment Report	County	County	Annual	Policy and Planning	Donors
		State	State		Emergency Response	UN
		National	National			NGOs
						Government
Food Security Monitoring System	Assessment Report	Household	County	Quarterly	Early Warning	Donors
	Bulletin	Payam	State		Emergency Response	UN
		County	National			NGOs
		State				Government
		National				
<b>Demographic</b>						

Returnee and IDP movement tracking	Assessment Report	Household	County	Weekly	Multiple	Donors
	Raw data	Payam	State			UN
		County	National			NGOs
		State				Government
		National				
<b>Health and Nutrition</b>						
SMART Surveys	Assessment Report	County	State	Bi-Annual	Early Warning	Donors
	Bulletin		National		Emergency Response	UN
						NGOs
						Government
<b>Integrated Phase Classification (IPC)</b>						
Integrated Phase Classification (IPC)	Bulletin	County	County	Quarterly	Early Warning	Donors
		State	State		Emergency Response	UN
		National	National			NGOs
						Government
<b>Market Information</b>						
Market (crop, livestock and other items) Prices	Bulletin	State	State	Weekly	Early Warning	Donors
	4 Raw data					UN
						NGOs
						Government
<b>Lakes</b>						
<b>Agriculture</b>						
Agriculture And Livestock Situation Analysis (ALSA)	Assessment Report	Household	County	Quarterly	Policy and Planning	Donors
	Bulletin	Payam	State		Early Warning	UN
		County	National		Emergency Response	NGOs
		State			Monitoring and	Government
Food Security Monitoring System	Assessment Report	Household	County	Quarterly	Early Warning	Donors
	Bulletin	Payam	State		Emergency Response	UN
		County	National			NGOs
		State				Government
		National				
<b>Health and Nutrition</b>						
SMART Surveys	Assessment Report	County	State	Bi-Annual	Early Warning	Donors
	Bulletin		National		Emergency Response	UN
						NGOs
						Government
<b>Integrated Phase Classification (IPC)</b>						
Integrated Phase Classification (IPC)	Bulletin	County	County	Quarterly	Early Warning	Donors
		State	State		Emergency Response	UN
		National	National			NGOs
						Government

<b>Market Information</b>						
Market (crop, livestock and other items) Prices	Bulletin	State	State	Weekly	Early Warning	Donors
	Raw data					UN
						NGOs
						Government
<b>Northern Bahr El Ghazal</b>						
<b>Agriculture</b>						
Agriculture And Livestock Situation Analysis (ALSA)	Assessment Report	Household	County	Quarterly	Policy and Planning	Donors
	Bulletin	Payam	State		Early Warning	UN
		County	National		Emergency Response	NGOs
		State			Monitoring and	Government
Crop and Food Security Assessment Mission	Assessment Report	County	County	Annual	Policy and Planning	Donors
		State	State		Emergency Response	UN
		National	National			NGOs
						Government
Food Security Monitoring System	Assessment Report	Household	County	Quarterly	Early Warning	Donors
	Bulletin	Payam	State		Emergency Response	UN
		County	National			NGOs
		State				Government
		National				
<b>Demographic</b>						
Returnee and IDP movement tracking	Assessment Report	Household	County	Weekly	Early Warning	Donors
	Raw data	Payam	State		Emergency Response	UN
		County	National			NGOs
		State				Government
		National				
Returnee and IDP movement tracking	Assessment Report	6 Multiple	County	Weekly	Early Warning	Donors
	Raw data		State		Emergency Response	UN
			National			NGOs
						Government
<b>Health and Nutrition</b>						
SMART Surveys	Assessment Report	County	State	Bi-Annual	Early Warning	Donors
	Bulletin		National		Emergency Response	UN
						NGOs
						Government

<b>Integrated Phase Classification (IPC)</b>						
Integrated Phase Classification (IPC)	Bulletin	County	County	Quarterly	Early Warning	Donors
		State	State		Emergency Response	UN
		National	National			NGOs
						Government
<b>Market Information</b>						
Market (crop, livestock and other items) Prices	Bulletin	State	State	Weekly	Early Warning	Donors
	Raw data					UN
						NGOs
						Government
<b>Unity</b>						
<b>Agriculture</b>						
Agriculture And Livestock Situation Analysis (ALSA)	Assessment Report	Household	County	Quarterly	Policy and Planning	Donors
	Bulletin	Payam	State		Early Warning	UN
		County	National		Emergency Response	NGOs
		State			Monitoring and	Government
Crop and Food Security Assessment Mission	Assessment Report	County	County	Annual	Policy and Planning	Donors
		State	State		Emergency Response	UN
		National	National			NGOs
						Government
Food Security Monitoring System	Assessment Report	Household	County	Quarterly	Early Warning	Donors
	Bulletin	Payam	State		Emergency Response	UN
		County	National			NGOs
		State				Government
		National				
<b>Demographic</b>						
Returnee and IDP movement tracking	Assessment Report	Household	County	Weekly	Early Warning	Donors
	Raw data	Payam	State		Emergency Response	UN
		County	National			NGOs
		State				Government
		National				
<b>Health and Nutrition</b>						
SMART Surveys	Assessment Report	County	State	Bi-Annual	Early Warning	Donors
	Bulletin		National		Emergency Response	UN
						NGOs
						Government
<b>Integrated Phase Classification (IPC)</b>						
Integrated Phase Classification (IPC)	Bulletin	County	County	Quarterly	Early Warning	Donors

		State	State		Emergency Response	UN
		National	National			NGOs
						Government
<b>Market Information</b>						
Market (crop, livestock and other items) Prices	Bulletin	State	State	Weekly	Early Warning	Donors
	Raw data					UN
						NGOs
						Government
<b>Vulnerability Assessment and Mapping</b>						
Food Security Monitoring System	Assessment Report	Household	County	Quarterly	Early Warning	Donors
	Bulletin	Payam	State		Emergency Response	UN
		County	National			NGOs
		State				Government
		National				
<b>Upper Nile</b>						
<b>Agriculture</b>						
Agriculture And Livestock Situation Analysis (ALSA)	Assessment Report	Household	County	Quarterly	Policy and Planning	Donors
	Bulletin	Payam	State		Early Warning	UN
		County	National		Emergency Response	NGOs
		State			Monitoring and	Government
Crop and Food Security Assessment Mission	Assessment Report	County	County	Annual	Policy and Planning	Donors
		State	State		Emergency Response	UN
		National	National			NGOs
						Government
Food Security Monitoring System	Assessment Report	Household	County	Quarterly	Early Warning	Donors
	Bulletin	Payam	State		Emergency Response	UN
		County	National			NGOs
		State				Government
		National				
<b>Demographic</b>						
Returnee and IDP movement tracking	Assessment Report	Household	County	Weekly	Early Warning	Donors
	Raw data	Payam	State		Emergency Response	UN
		County	National			NGOs
		State				Government
		National				
<b>Health and Nutrition</b>						
SMART Surveys	Assessment Report	County	State	Bi-Annual	Early Warning	Donors

	Bulletin		National		Emergency Response	UN
						NGOs
						Government
<b>Integrated Phase Classification (IPC)</b>						
Integrated Phase Classification (IPC)	Bulletin	County	County	Quarterly	Early Warning	Donors
		State	State		Emergency Response	UN
		National	National			NGOs
						Government
<b>Market Information</b>						
Market (crop, livestock and other items) Prices	Bulletin	State	State	Weekly	Early Warning	Donors
	Raw data					UN
						NGOs
						Government
<b>Warrap</b>						
<b>Agriculture</b>						
Agriculture And Livestock Situation Analysis (ALSA)	Assessment Report	Household	County	Quarterly	Policy and Planning	Donors
	Bulletin	Payam	State		Early Warning	UN
		County	National		Emergency Response	NGOs
		State			Monitoring and	Government
Crop and Food Security Assessment Mission	Assessment Report	County	County	Annual	Policy and Planning	Donors
		State	State		Emergency Response	UN
		National	National			NGOs
						Government
Food Security Monitoring System	Assessment Report	Household	County	Quarterly	Early Warning	Donors
	Bulletin	Payam	State		Emergency Response	UN
		County	National			NGOs
		State				Government
		National				
<b>Demographic</b>						
Returnee and IDP movement tracking	5 Multiple Products	Household	County	Weekly	Early Warning	Donors
		Payam	State		Emergency Response	UN
		County	National			NGOs
		State				Government
		National				
<b>Health and Nutrition</b>						
SMART Surveys	Assessment Report	County	Multiple	Bi-Annual	Early Warning	Donors
	Bulletin				Emergency Response	UN



						NGOs
						Government
<b>Integrated Phase Classification (IPC)</b>						
Integrated Phase Classification (IPC)	Bulletin	County	County	Quarterly	Early Warning	Donors
		State	State		Emergency Response	UN
		National	National			NGOs
						Government
<b>Market Information</b>						
Market (crop, livestock and other items) Prices	Bulletin	State	State	Weekly	Early Warning	Donors
	Raw data					UN
						NGOs
						Government
<b>Western Bahr El Ghazal</b>						
<b>Agriculture</b>						
Agriculture And Livestock Situation Analysis (ALSA)	Assessment Report	Household	County	Quarterly	Policy and Planning	Donors
	Bulletin	Payam	State		Early Warning	UN
		County	National		Emergency Response	NGOs
		State			Monitoring and	Government
Crop and Food Security Assessment Mission	Assessment Report	County	County	Annual	Policy and Planning	Donors
		State	State		Emergency Response	UN
		National	National			NGOs
						Government
Food Security Monitoring System	Assessment Report	Household	County	Quarterly	Early Warning	Donors
	Bulletin	Payam	State		Emergency Response	UN
		County	National			NGOs
		State				Government
		National				
<b>Integrated Phase Classification (IPC)</b>						
Integrated Phase Classification (IPC)	Bulletin	County	County	Quarterly	Early Warning	Donors
		State	State		Emergency Response	UN
		National	National			NGOs
						Government
<b>Western Equatoria</b>						
<b>Agriculture</b>						
Agriculture And Livestock Situation Analysis (ALSA)	Assessment Report	Household	County	Quarterly	Policy and Planning	Donors
	Bulletin	Payam	State		Early Warning	UN
		County	National		Emergency Response	NGOs
		State			Monitoring and	Government

Crop and Food Security Assessment Mission	Assessment Report	County	County	Annual	Policy and Planning	Donors
		State	State		Emergency Response	UN
		National	National			NGOs
						Government
Food Security Monitoring System	Assessment Report	Household	County	Quarterly	Early Warning	Donors
	Bulletin	Payam	State		Emergency Response	UN
		County	National			NGOs
		State				Government
		National				
<b>Market Information</b>						
Market (crop, livestock and other items) Prices	Bulletin	State	State	Weekly	Early Warning	Donors
	Raw data					UN
						NGOs
						Government
<b>National</b>						
<b>Agriculture</b>						
Annual Needs and Livelihood Analysis	Assessment Report	National	State	Bi-Annual	Early Warning	Donors
	Bulletin		National		Emergency Response	UN
						NGOs
						Government
<b>Health and Nutrition</b>						
SMART Surveys	Assessment Report	County	State	Bi-Annual	Early Warning	Donors
	Bulletin		National		Emergency Response	UN
						NGOs
						Government
<b>Market Information</b>						
Market (crop, livestock and other items) Prices	Bulletin	State	State	Weekly	Early Warning	Donors
	Raw data					UN
						NGOs
						Government
<b>Vulnerability Assessment and Mapping</b>						
BRACE	Assessment Report	Multiple	County	Bi-Annual	Monitoring and	Donors
	Policy briefs		State			UN
	Raw data					NGOs
						Government
Food Security Monitoring System	Assessment Report	Household	County	Quarterly	Early Warning	Donors
	Bulletin	Payam	State		Emergency Response	UN
		County	National			NGOs
		State				Government
		National				

## Annex 5 – Reliability and Timeliness scores for existing food security and nutrition information systems

		Agriculture And Livestock Situation Analysis (ALSA)	Crop and Food Security Assessment Mission	Food Security Monitoring System	Integrated Phase Classification (IPC)	Market (crop, livestock and other items) Prices	Returnee and IDP movement tracking	SMART Surveys
<b>Central Equatoria</b>	Average Reliability Score	2	3	3	3	2		
	Average Timeliness Score	2	1	4	3	2		
<b>Eastern Equatoria</b>	Average Reliability Score		3	3	3	1	3	3
	Average Timeliness Score		1	4	3	2	4	2
<b>Jonglei</b>	Average Reliability Score		3	2	3	1	3	2
	Average Timeliness Score		2	3	3	2	4	2
<b>Lakes</b>	Average Reliability Score	1	2	3	3	1		2
	Average Timeliness Score	1	1	3	3	2		2
<b>Northern Bahr El Ghazal</b>	Average Reliability Score	3	1	3	3	2	3	2
	Average Timeliness Score	3	1	4	3	2	4	2
<b>Unity</b>	Average Reliability Score	2	3	3	3	1	3	2
	Average Timeliness Score	2	2	4	3	2	4	2
<b>Upper Nile</b>	Average Reliability Score	3	3	2	3	2	3	2
	Average Timeliness Score	3	1	4	3	2	4	2
<b>Warrap</b>	Average Reliability Score	3	3	3	3	2	3	2

		Agriculture And Livestock Situation Analysis (ALSA)	Crop and Food Security Assessment Mission	Food Security Monitoring System	Integrated Phase Classification (IPC)	Market (crop, livestock and other items) Prices	Returnee and IDP movement tracking	SMART Surveys
	Average Timeliness Score	2	2	4	3	2	4	2
<b>Western Bahr El Ghazal</b>	Average Reliability Score	1	1	2	3			
	Average Timeliness Score	1	1	2	3			
<b>Western Equatoria</b>	Average Reliability Score	2	2	3		2		
	Average Timeliness Score	2	1	4		2		
<b>Total Average Reliability Score</b>		2	2	3	3	1	3	2
<b>Total Average Timeliness Score</b>		2	1	4	3	2	4	2

## Acronyms

AFIS	Agriculture and Food Information Systems
ALSA	Agriculture and Livestock Situation Analysis
ANLA	Annual Needs and Livelihoods Assessment
CD	Capacity Development
CoP	Community of Practice
CFSAM	Crop and Food Security Assessment Mission
CLiMIS	Crop and Livestock Market Information Systems
EU	European Union
EWS	Early Warning Systems
FAO	Food and Agriculture Organization
FEWS NET	Famine Early Warning Systems Network
FNS	Food and Nutrition Security
FS	Food Security
FSC	Food Security Council
FSC SG	Food Security Council Secretary General
FSIN	Food Security Information Network
FSMS	Food Security Monitoring System
FSTS	Food Security Technical Secretariat
IDP	Internally Displaced Person
IPC	Integrated Food Security Phase Classification
IFPRI	International Food Policy Research Institute
LAF	Livelihoods Analysis Forum

LAU	Livelihoods Analysis Unit
M&E	Monitoring and Evaluation
MAFC&RD	Ministry of Agriculture, Forestry, Cooperatives & Rural Development
MAFTARFC&RD	Ministry of Agriculture, Forestry, Tourism, Animal Resources and Fisheries & Cooperatives and Rural Development
MARF	Ministry of Animal Resources and Fisheries
MoH	Ministry of Health
NBS	National Bureau of Statistics
NSAs	Non-State Actors
RSS	Republic of South Sudan
SIFSIA	Sudan Institutional Capacity Programme: Food Security Information for Action
UNICEF	United Nations Children's Fund
UNHCR	United Nations High Commissioner for Refugees
USAID	United States Agency for International Development
WFP	World Food Programme





For more information and to join the Community of Practice: [www.fsincop.net/](http://www.fsincop.net/)

