



DG ECHO

Humanitarian Aid & Civil Protection



Fragility, security and development in the context of the EU external action

28 April 2016

Csaba GYIMESI

ECHO.A1 (Strategy, Coordination and Inter-Institutional Relations)

Two complementary tools

	Humanitarian Aid	Civil Protection
What?	Funding from EC budget (1,3 bln € in 2014, 1,5 bln € in 2015) Active donor: programming and policy development	Voluntary contributions in kind from MS, coordinated and supported by COM/ERCC Budget of CP Financial Instrument = EUR 368 million over 7 years
To whom?	Implementing partners	Government of affected country
Geographical scope?	Most vulnerable population(s) in third countries, mainly in developing countries	Inside and outside the EU
Type of disaster?	Natural and man-made disasters (wars, conflicts, forgotten crises etc.)	Natural and man-made disasters (complex emergencies rather exceptional)
Timescale?	Immediate aftermath of crisis & beyond (presence of humanitarian needs)	Acute stage only (normally max. 2-3 weeks)

A third tool: inside Europe

Commission proposal 2 March 2016

Emergency support inside the EU

When to use it?

Exceptional circumstances
leading to humanitarian
consequences overwhelming
Member States

Funding of **€700 million**
between **2016** and **2018**

Implementation via humanitarian partners
or specialised agencies of the Member States

What?



Education



Protection



Shelter



Health



Water and
Sanitation



Food

Mandate

- to **save and preserve life** during emergencies and their immediate aftermath in man-made or natural disasters outside the EU;
- to **provide assistance and relief** to people affected by longer-lasting crises such as civil wars;
- to **finance the delivery of aid**, working to ensure that aid is accessible to those for whom it is intended;
- to **assist refugees or displaced people** wherever they find sanctuary and to help them resettle if they return home;
- to **support short-term rehabilitation and reconstruction**;
- to **ensure preparedness** for natural disasters, in particular by setting up early-warning systems and financing disaster prevention projects in high-risk regions.



EU action is guided by humanitarian principles

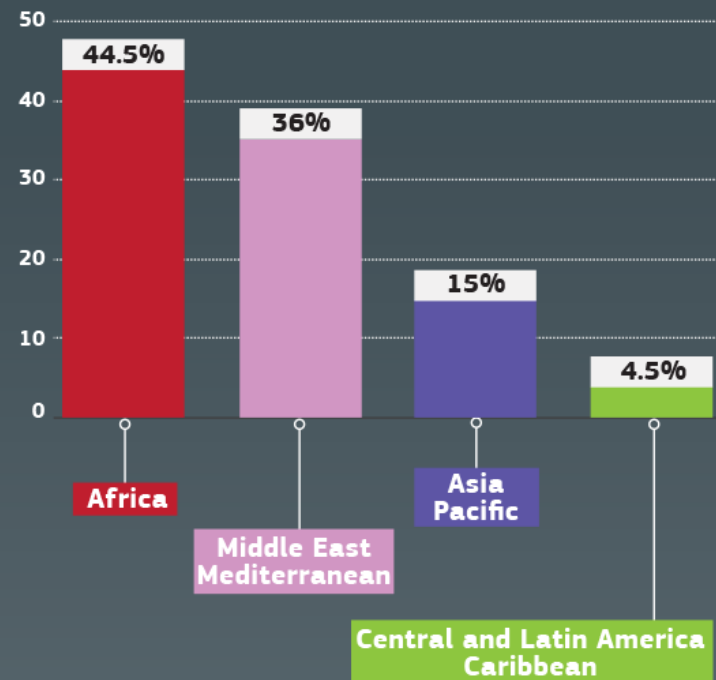
as reflected in the European Consensus
on Humanitarian Aid



The EU is a strong advocate
for the respect
of **International Humanitarian Law**

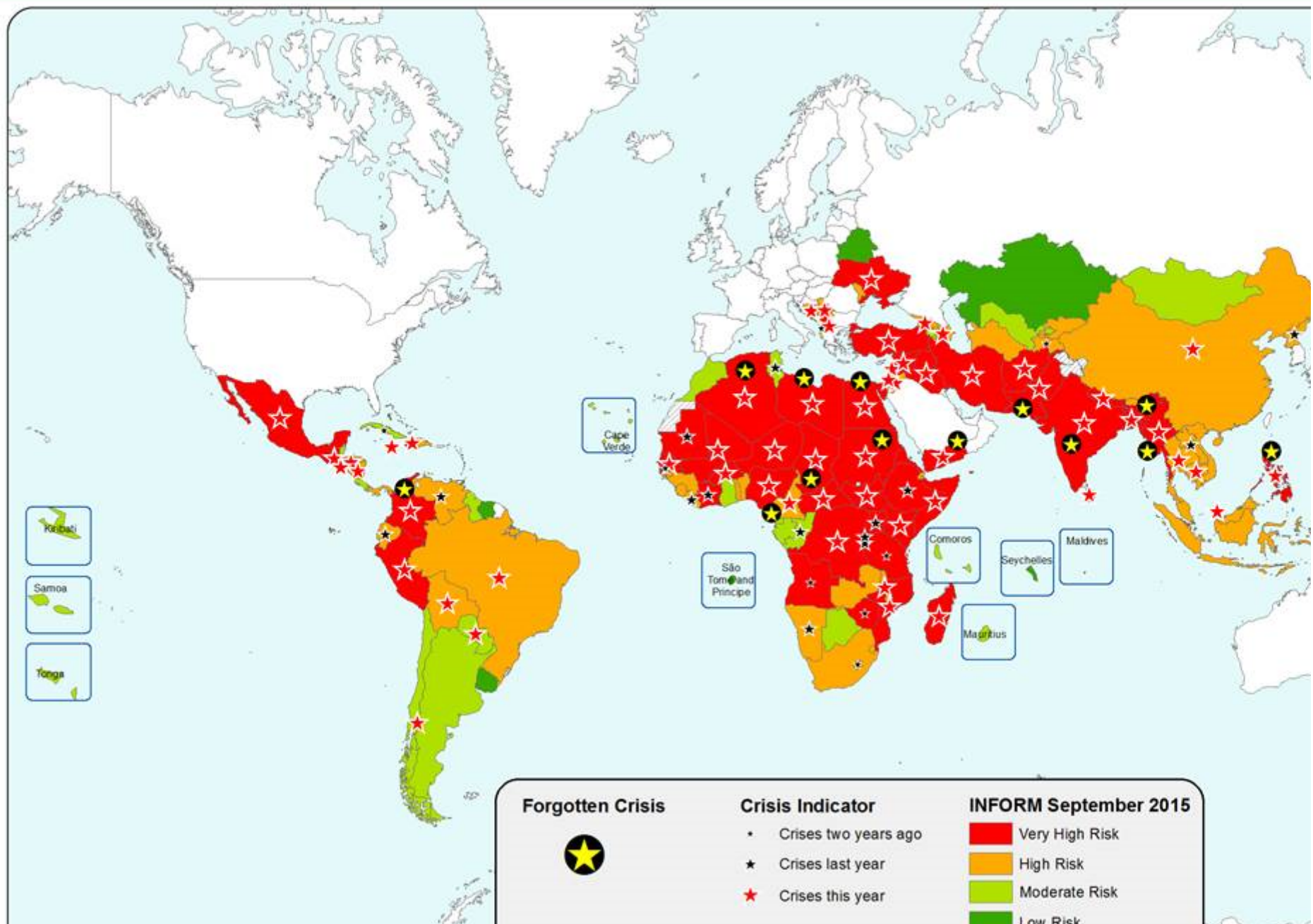
No matter where and who was struck by a crisis,

we acted to help people in need



(2013 ECHO Budget)

INFORM AND CRISIS INDEX & FORGOTTEN CRISIS Sep 2015



ECHO Field Network

Presence in the field

150 technical assistants

315 national staff members

48 field offices in 40+ countries

12 Regional Offices (RO)



We fund **forgotten crises**
which escaped the media and the international
community's attention, such as:

- Rohingya refugees crisis in **Bangladesh**
- internal armed conflict in **Colombia**
- Crisis in **Northern Yemen**
- Sahrawi refugees in **Algeria**
- Conflict in **Northern Pakistan**
- Conflict in **Kachin, Myanmar**

1 in 7 euros to forgotten crises



The EU played a major role in
putting the crisis in the
Central African Republic
on the **international agenda**
and gathering **global support**



Forgotten crises

which escaped the media and the
international community's
attention

- Rohingya refugees crisis in **Bangladesh**
- internal armed conflict in **Colombia**
- Sahrawi refugees in **Algeria**
- Conflict in **Northern Pakistan**





Comprehensive Approach

Crisis

Range of EU options

**Diplomatic
actions**

**Economic
Sanctions**

**CSDP
Activity**

**Development
Aid**

**Conflict
Prevention
measures**

**JHA, TRADE,
CLIMA,...**

**Humanitarian
Assistance**

**Political
Framework
for
Crisis Approach**

In

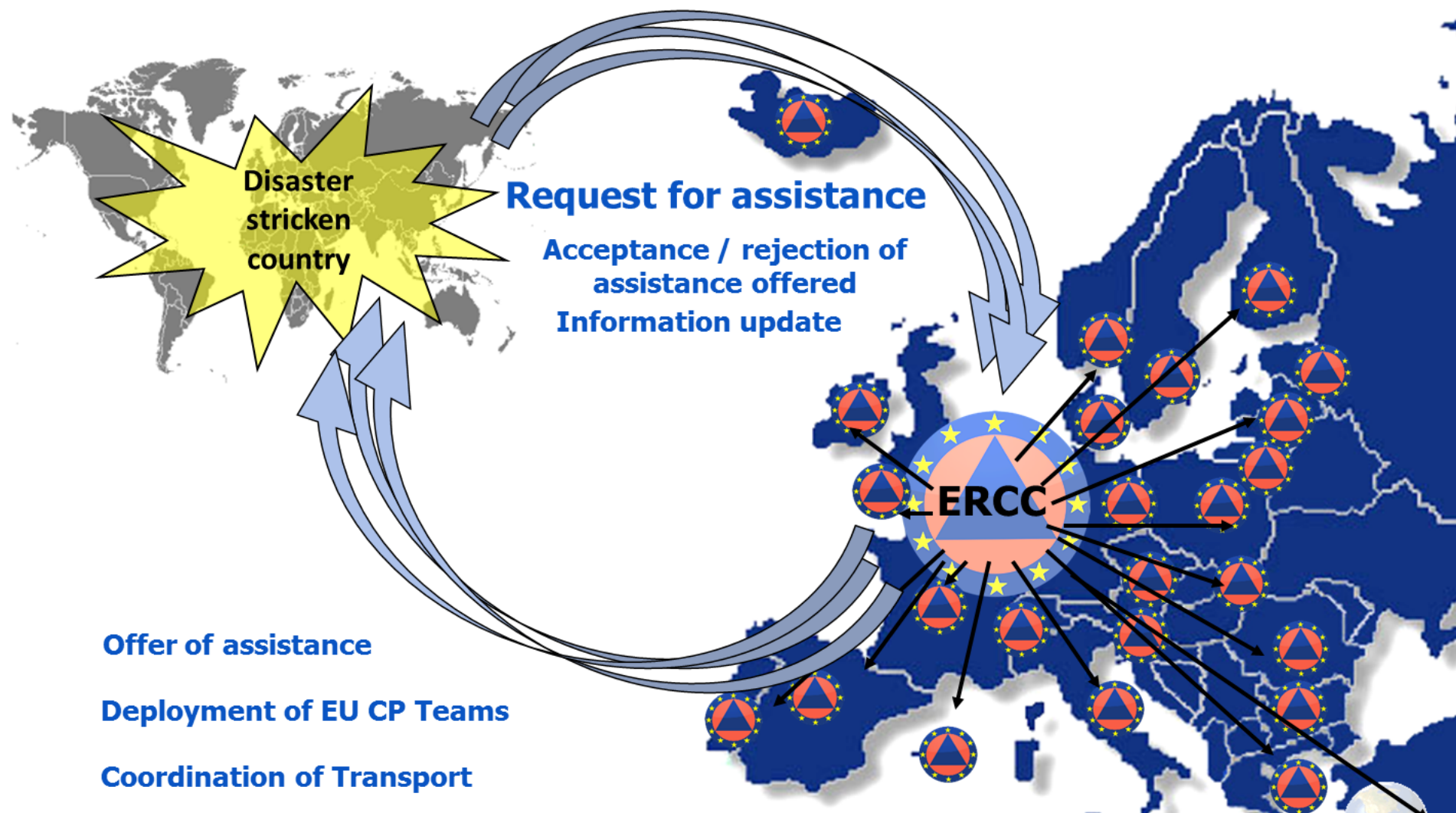
- **Assess situation and ring the alarm bells (as we did in CAR); to help formulate key messages on issues like IHL (as we do in Syria); to help mobilize our political and development colleagues when needed.**

Out

- **HA cannot be put under any political objective. It needs its neutrality, impartiality and independence to be able to act in conflict. It is often the only tangible symbol of EU solidarity.**

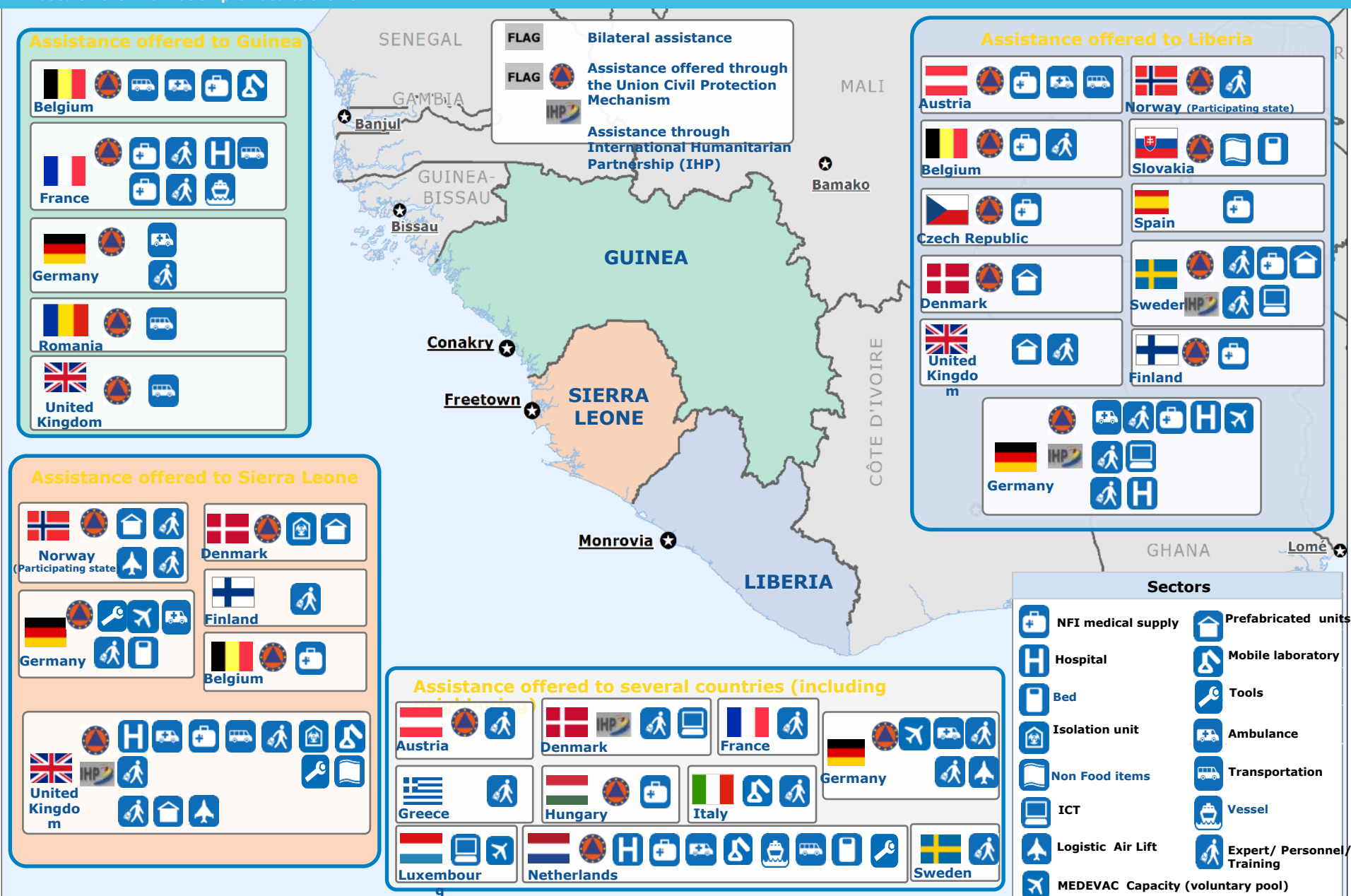
Two complementary tools

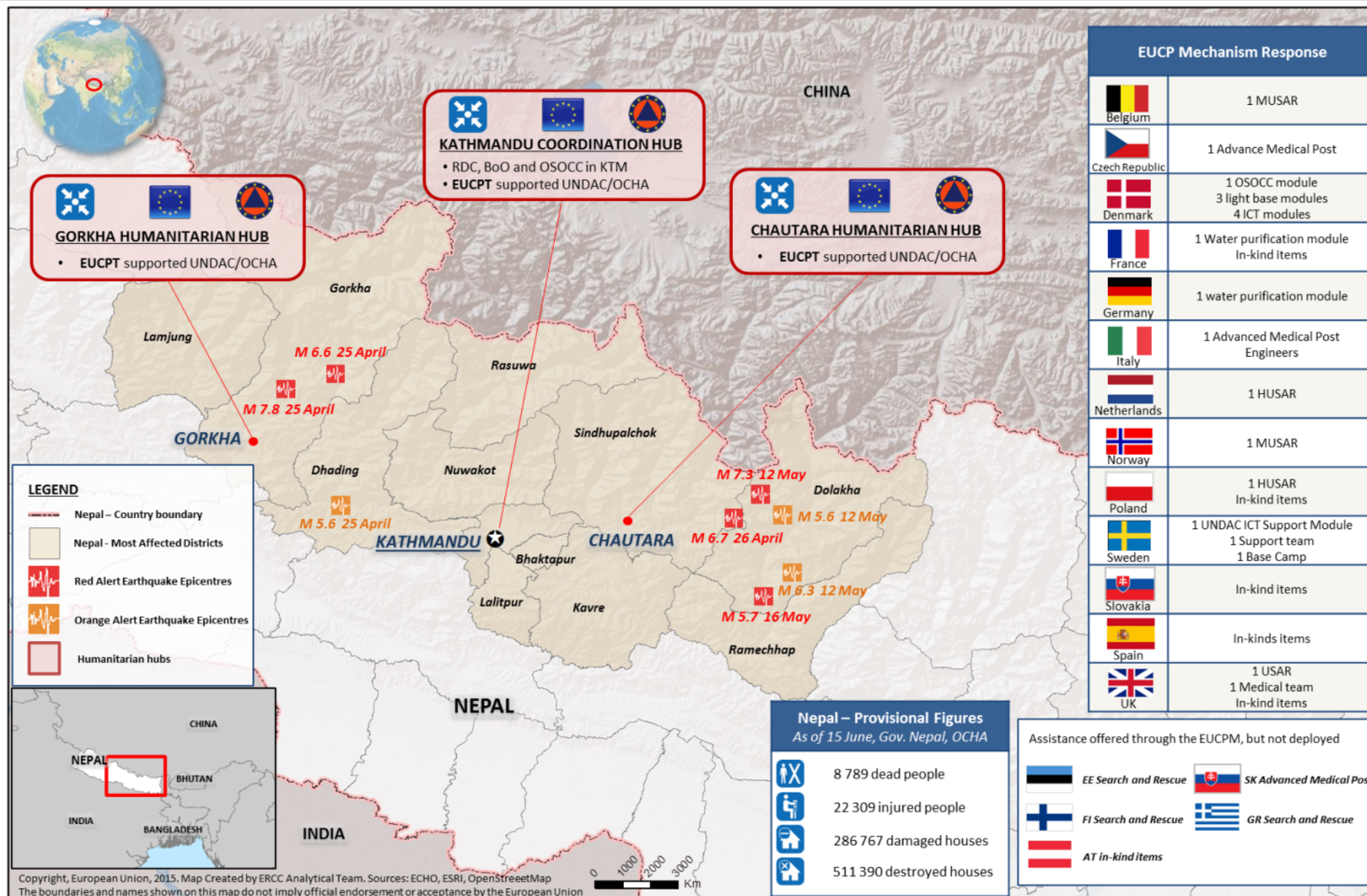
	Humanitarian Aid	Civil Protection
What?	Funding from EC budget (1,3 bln € in 2014, 1,5 bln € in 2015) Active donor: programming and policy development	Voluntary contributions in kind from MS, coordinated and supported by COM/ERCC Budget of CP Financial Instrument = EUR 368 million over 7 years
To whom?	Implementing partners	Government of affected country
Geographical scope?	Most vulnerable population(s) in third countries, mainly in developing countries	Inside and outside the EU
Type of disaster?	Natural and man-made disasters (wars, conflicts, forgotten crises etc.)	Natural and man-made disasters (complex emergencies rather exceptional)
Timescale?	Immediate aftermath of crisis & beyond (presence of humanitarian needs)	Acute stage only (normally max. 2-3 weeks)



In kind assistance offers received through CP Mechanism and bilaterally by Member States in Ebola affected countries as of 25 February 2015*

*Based on the information provided to the EC







Emergency Response Coordination Centre (ERCC)





Working tools – CECIS_ Common Emergency Communication and Information System



Common Emergency Communication and Information System

EXERCISE : POST EXERCISE MODE



European Civil Protection

ba cs da de el en es et fi fr hr hu is it lt lv nl no pl pt ro sk sl sv

MIC civpro 1

Home

[▶ Emergencies](#)

[▶ Resources](#)

[▶ CECIS Logbooks](#)

[▶ Administrative](#)

[▶ Utilities](#)

Switch User/Mode

Local : 16:08:35

UTC : 15:08:35

Ongoing Emergencies

	Data/time	Country	Emergency Name	Type of Event	Status
<input type="radio"/>	2011/10/23 16:27:29	GR	POSEIDON 2011	Earthquake	PC-CMD
<input type="radio"/>	2011/10/18 09:46:21	HR	**EXERCISE*** M/T "SILVER STAR"	Marine pollution	RFA
<input type="radio"/>	2011/10/05 17:32:46	MT	****TEST EMAIL*****	Marine pollution	RFA
<input type="radio"/>	2011/10/03 07:48:41	AT	TEST	General Information	RFA
<input type="radio"/>	2011/10/03 07:29:39	GR	POSEIDON EXERCISE	Earthquake	RFA
<input type="radio"/>	2011/09/07 11:00:00	NO	SKAGEX 11	Traffic, Marine pollution	IT
<input type="radio"/>	2011/08/29 09:35:15	DK	MARPOL EXERCISE 29-08-2011	Marine pollution	EWM
<input type="radio"/>	2011/08/26 11:50:21	DK	Test	Marine pollution	IT
<input type="radio"/>	2011/08/18 13:30:31	PL	EXERCISE-EUCARPATHEX-EXERCISE	Biological, Chemical, Radiological	EWM
<input type="radio"/>	2011/07/19 11:55:11	BE	EXERCISE - EXERCISE - EXERCISE For	Fire	EWM
<input type="radio"/>	2011/05/04 16:45:04	PT	*** TEST *** TEST *** TEST ***	Marine pollution	IT
<input type="radio"/>	2011/05/02 10:15:08	EE	REQUEST OF ASSISTANCE - EXERCISE	Bio agents, Chemical agents	MTS
<input type="radio"/>	2009/12/01 14:39:27	HT	Floods Haiti	Flooding	PC-CMD
<input type="radio"/>	2009/12/01 14:38:48	HT	Haiti 2	Flooding	PC-CMD
<input type="radio"/>	2008/09/08 14:32:15	HT	Flood in Haiti	Flooding	PC-CMD

[Select](#)

[Log Book](#)

[Requests Overview](#)

Thank you

Csaba GYIMESI
csaba.gyimesi@ec.europa.eu



For more information:
DG ECHO – Humanitarian Aid and Civil Protection
<http://ec.europa.eu/echo>



European Commission - Humanitarian Aid & Civil Protection (ECHO)
EU humanitarian aid @eu_echo

