

# **Revitalising the health districts: from vertical health care delivery to integrated health systems**

•

**Bisimwa Ghislain, MD, PhD.  
School of Public Health  
Catholic University of Bukavu- DRC  
RIPSEC Program**

# Outline presentation

1. Health District introduction
2. Revitalising the health districts and partnership in DRC
3. Walungu Health district case

# **(1) The health district**

*Alma Ata Concept...*

## mission

- Formation universitaire
- Recherche
- Diagnostic
- Soins intensifs spécialisés

3<sup>e</sup> échelon



HOPITAL TERTIAIRE



CS: Centre de Santé  
PS: Poste de Santé  
••• Les structures en pointillé sont des compromis

- Formation paramédicale
- Diagnostic
- Soins intensifs

2<sup>e</sup> échelon



HOPITAL DE DISTRICT

CS intermédiaire  
ou  
hôpital local

1<sup>er</sup> échelon

CS

CS

CS

CS

CS

ville

villages

villages très éloignés

district A

HOPITAL DE DISTRICT  
"du premier recours"

CS

CS

CS

CS

PS PS  
villages très éloignés

district B



# Health district

- ***Quality of health services:***

- decentralized,
- permanent
- polyvalent
- accessible

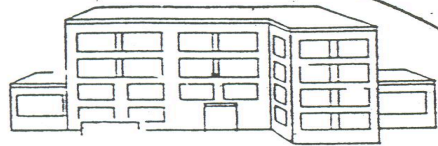
- ***Quality of health care :***

- Continuous
- integrated
- Global / Patient-centred

# The reality...

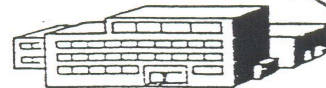
# LE SYSTEME DE SANTE

MEDECINE



Hôpital Universitaire

H.P.  
24

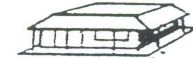


Hôpital de District

PLANIFICATION

GESTION

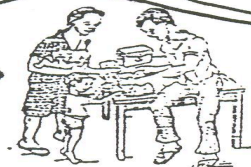
EVALUATION



Centre de San

H-3<sup>re</sup> Ec.  
FORMATION

EDUCATION  
COMMUNICATION



Agent de Santé

Statistiques

Epidémiologie

Démographie

Administration

Géographie

Informatic



Médecine Privée



Famille

Sociologie

Anthropologie



Médecine Traditionnelle



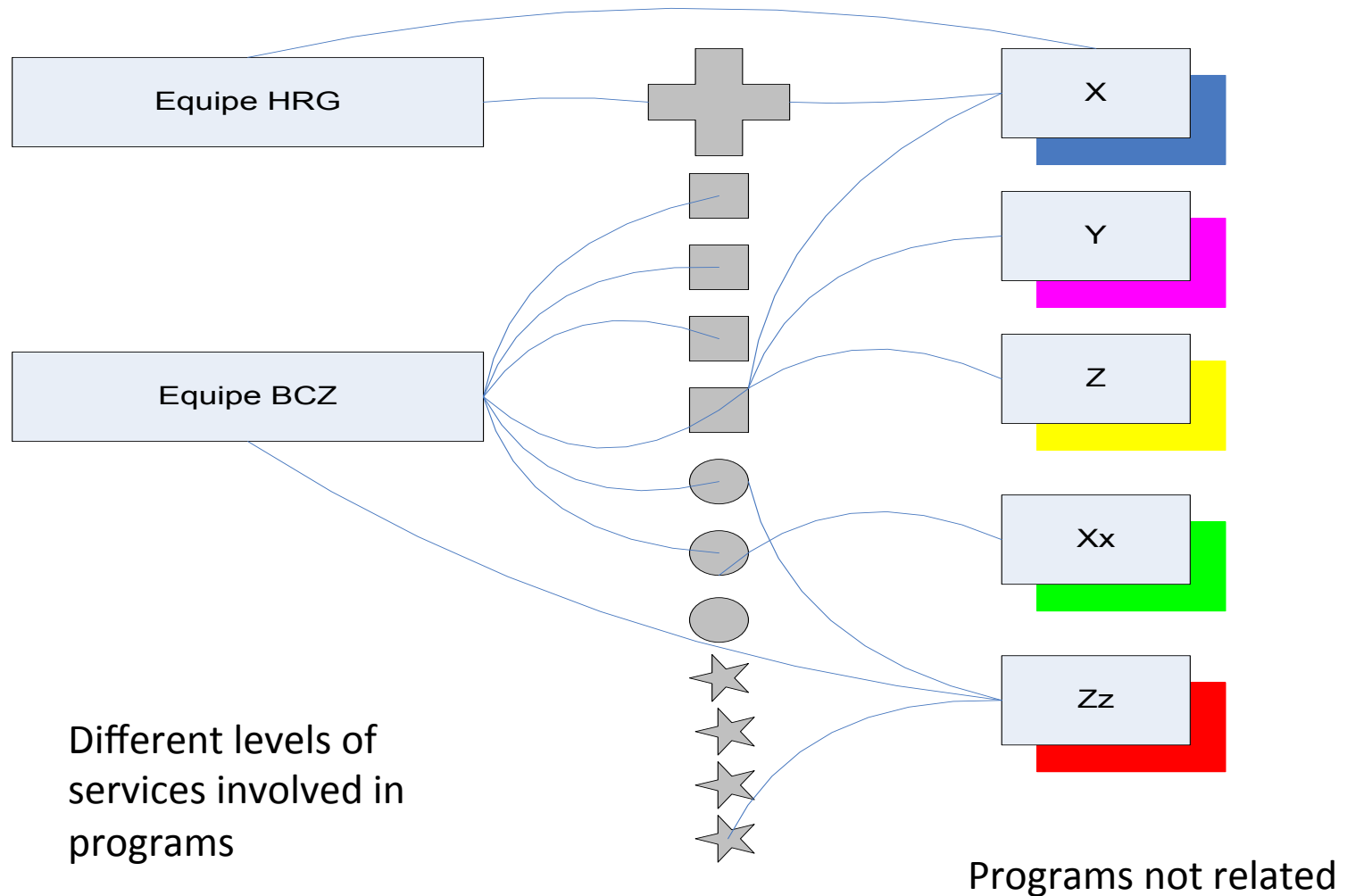
Relations, Voisins ...

INFLUENCES : POLITIQUE INTERNATIONALE

AIDE INTERNATIONALE

ECONOMIE

# Many problems at district level



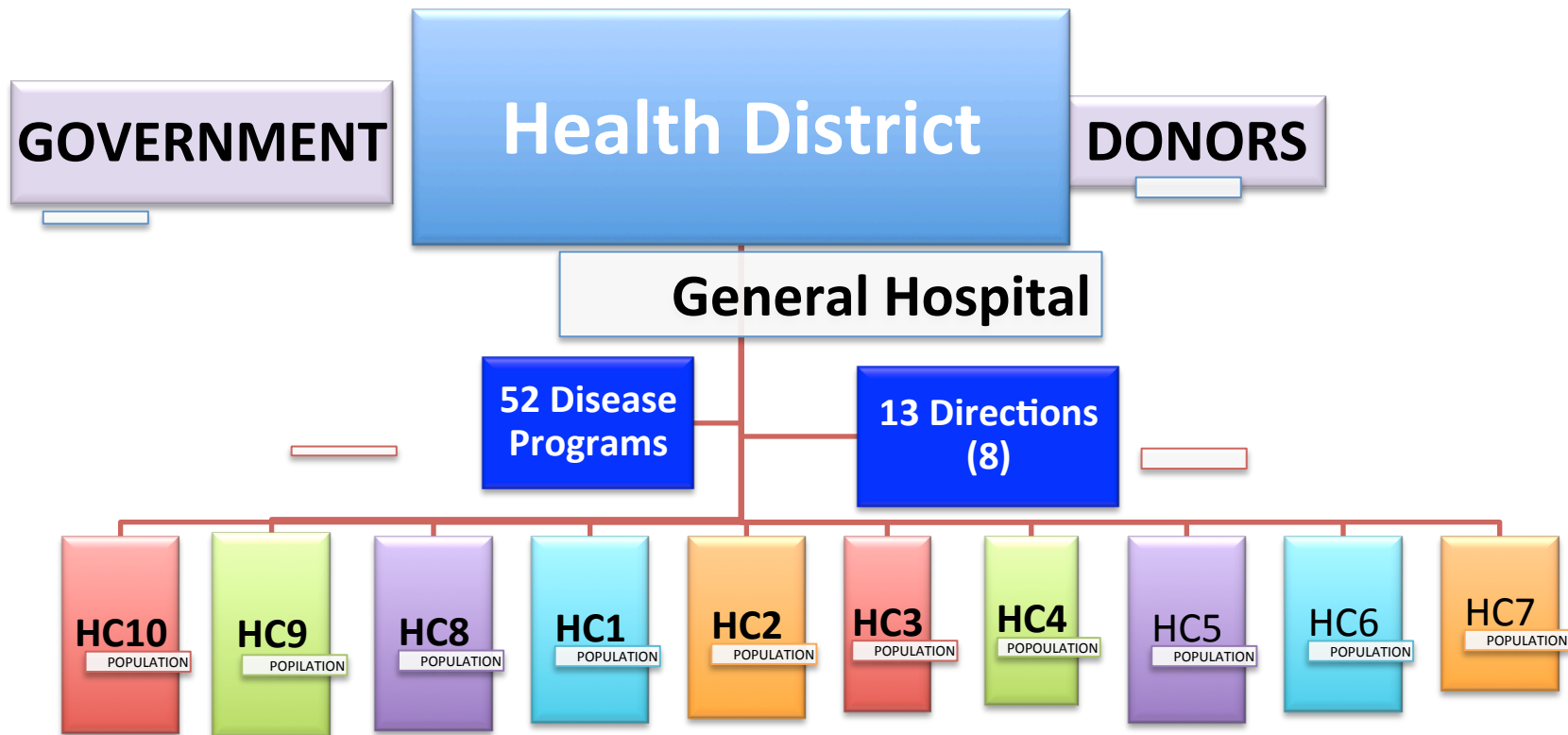
## **(2) Revitalising the health districts**



# **PROVINCE DU SUD-KIVU** **Territoire de Walungu**



# Health District: Primary health care in complex situation

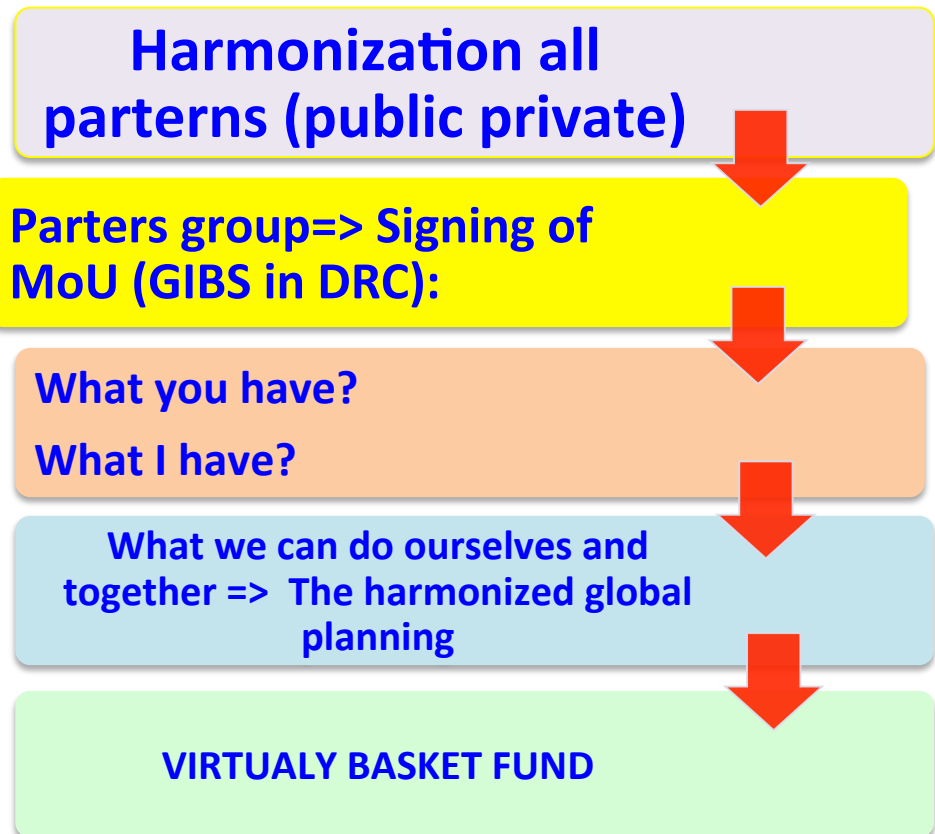


# To integrated health care in complex situation: What is the challenge?

## *(1) Government*

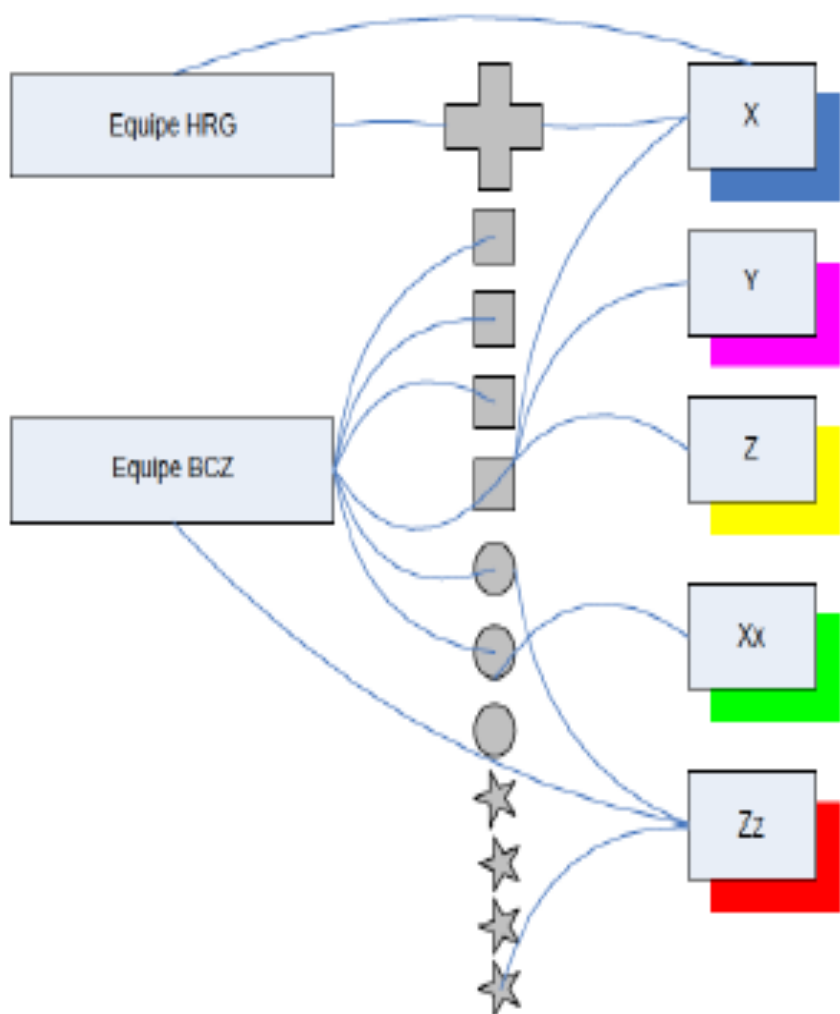
- To describe the norm: What can be do by the health district and how?
- Essential medical activities
- Resources : human and equipment
- Guidelines traitement
- *Global health administration*
- *Technical support*
- *Context: crisis?*

## *(2) Donors*

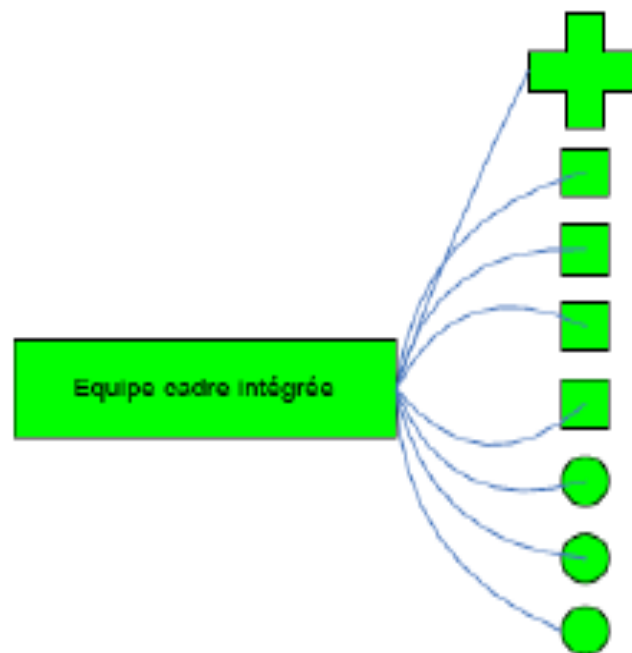




## Problems at district level



Health district leadership:  
the management team as  
local steward



# **(3) Walungu District Health case: a case study**

***Democratic Republic Of Congo  
South Kivu Province***

# Walungu Health District

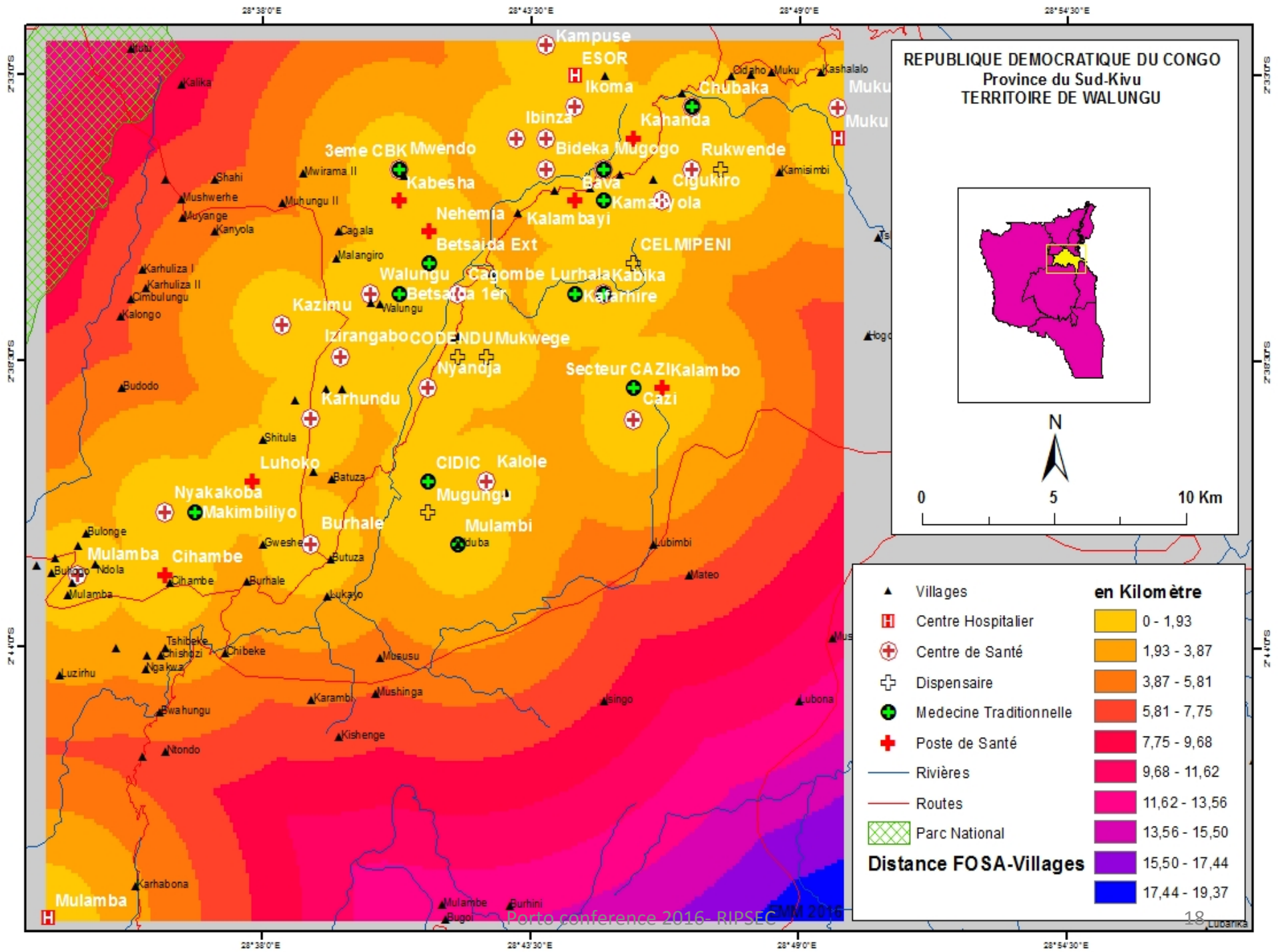
- Population (2015): 252 269
- Global area: 800 Km<sup>2</sup>
- (public) health centers: 23 (many private; N=?)
- General Hospital:
  - 1 (150 beds)
  - 2 reference health centers with beds
- Several donors present in the district (13)
- Many (national) vertical disease-control programmes, often poorly coordinated with the general health services

# Walungu Health District (2015)

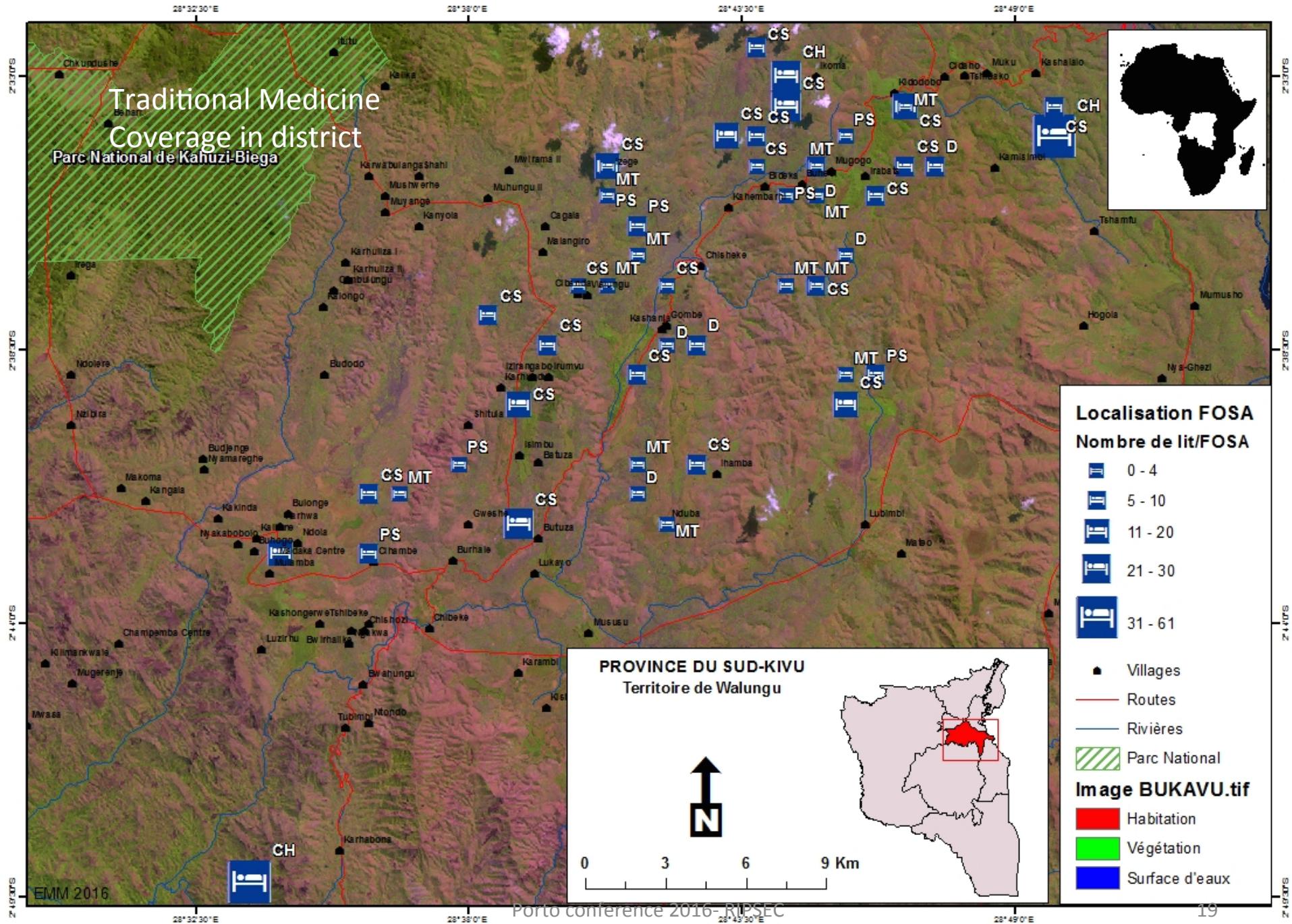
- Physicians : 9 (generalists) => 1 doctor per 28,030
- Nurses : 226 (1 per 949)
- Health 'coverage': 96% of people live within < 5Km from a health center
- Utilization of curative care consultation at health service: 34% on yearly basis
- Assisted deliveries : 93,4% (N=9145/9787)
- Mortality rate (2015): 27 per 10000 people

# What are the problems?

- **Geographic accessibility: reasonably OK**
- **Financial accessibility? Problematic**
- **Organisation of health services? Problematic**
- **Others options for population? Mixed systems**
- **Health maps**







## **(4) Conclusion:**

therapeutic services in rural health district  
=> choice between health center, private providers, traditional medicine, self-medication... and others options

### ***Questions:***

- **Situation specific to DR Congo?**
- **Linked to eastern Congo crisis?**
- **Management of complex chronic diseases?**



# Revitalizing process of district health care organisation...

- *Chessboard process...*
- *Health district by health district*
- *Health area by health area...*

**Many thanks**  
**Merci beaucoup**

***Welcome to D.R.Congo***

