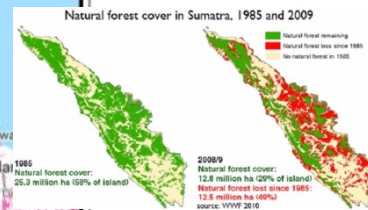
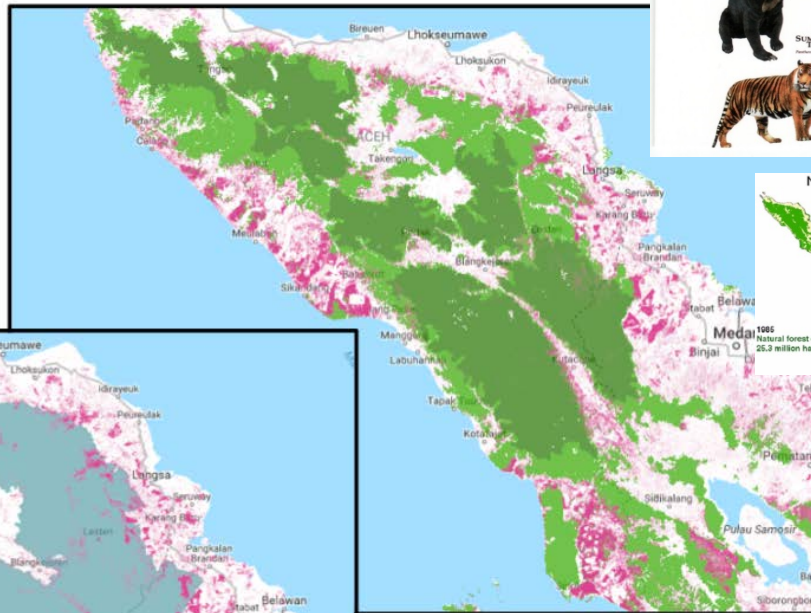




# Leuser Ecosystem

- Indonesia Leuser Ecosystem
- Indonesia primary forest (2000)
  - Intact (as of 2012)
  - Degraded (2000 – 2012)
- Tree cover loss (2001 – 2014) (annual, 30m, global, Hansen/UMD/Google/USGS/NASA)
  - Displaying loss with  $> 30\%$  canopy density.



#LastPlaceOnEarth  
The Leuser Ecosystem



# EU Support to Biodiversity in ASEAN



## Biodiversity Conservation and Management of Protected Areas in ASEAN (BCAMP) :

Enhance conservation of biodiversity & effective management of protected areas to reduce biodiversity loss



### **Comp. 1** Site level intervention

Improved effectiveness of biodiversity conservation & Protected Area management - **ASEAN Heritage Parks**

### **Component 2** Enabling National Support

Developed & mobilized **knowledge & scientific basis** for biodiversity conservation

**Mainstreamed biodiversity conservation** into **development plans & education systems**

### **Component 3** Regional level intervention

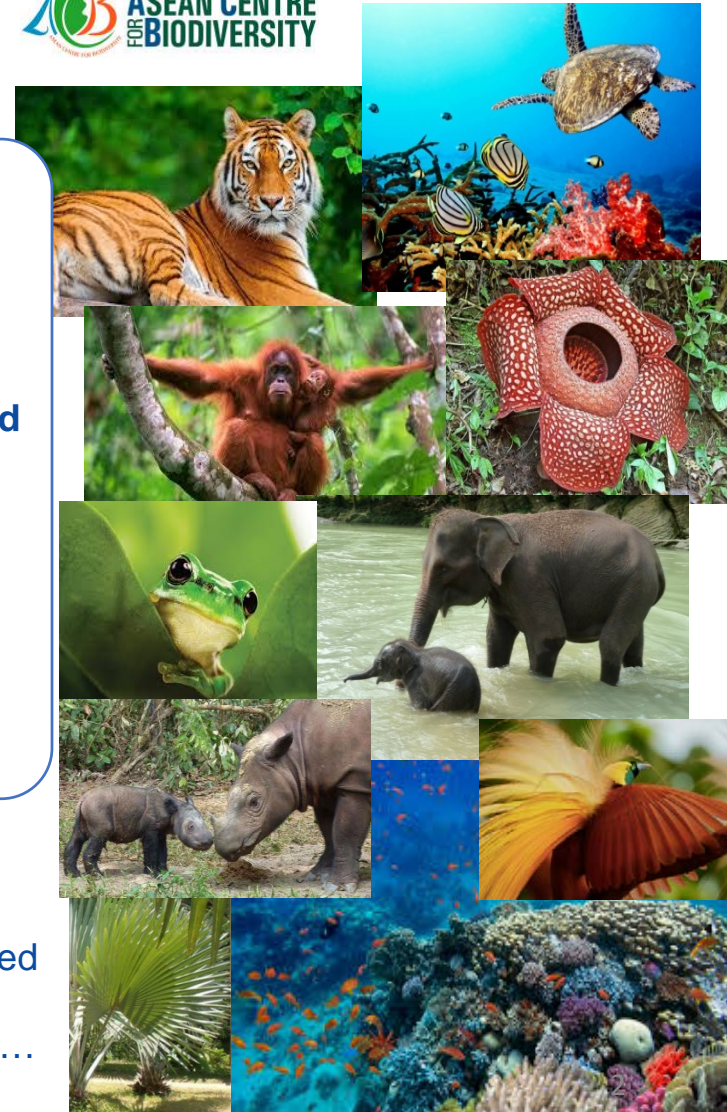
**Strengthened capacity of ACB** to support regional biodiversity agenda & AMS

**EUR 10 Million\*\*** – 2017 to 2021

**ASEAN Centre for Biodiversity (ACB)**, Los Banos Philippines

### **Timing:**

- Funding Decision 2015
- Financing Agreement signed Dec 2016
- Implementation from 2017...



# Sustainable Use of Peatlands and Haze Mitigation in ASEAN (SUPA)

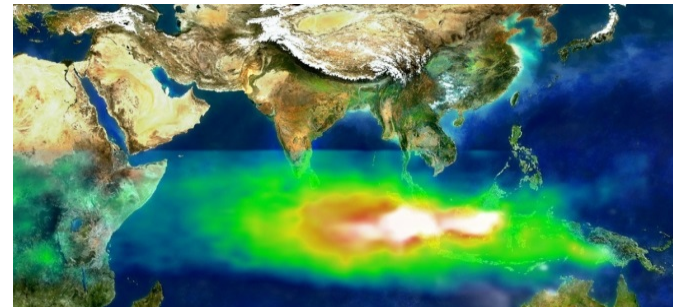
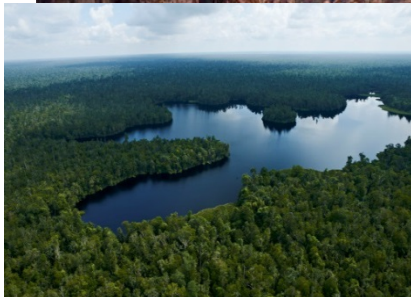
Improve sustainable peatland management, mitigate the adverse impact of climate change, manage the risk and reduce trans-boundary regional haze in ASEAN

Focus to AMS to significantly reduced peatland fires and associated haze through fire prevention and peatland rehabilitation;

**EUR 24 Million (20 from EU and 4 from Germany) – 2017 to 2021**

## Timing:

- EU Funding Decision Nov 2015
- Financing Agreement Dec 2016
- Implementation from March 2017



- ❑ ASEAN = 24.7 million ha = 60% tropical peatlands;
- ❑ Stores 68 billion tons carbon = 14% of carbon stored in peatlands globally;
- ❑ Human interventions & increasing wildfires → threaten peatland carbon sinks → ASEAN peatlands turned into massive GHG emitters;
- ❑ Annual GHG emissions estimated at about 2 billion tons, approximately **5% of global fossil fuel emissions** = combined total emissions of Germany, UK and France (2012) **or equivalent to global emissions of world's sea and air transport!**
- ❑ AMS adopted ASEAN Agreement on Transboundary Haze Pollution & ASEAN Peatland Management Strategy (APMS) to focus attention on the fire prone peatland areas;
- ❑ Joint programme: EU & DE