

Strengthening Health Applying Research Evidence (SHARE), Bangladesh

Project Director: Dr. Iqbal Anwar

Presented by:

Dr. Sohana Shafique
Deputy Project Coordinator
SHARE project, Bangladesh



9 Oct, 2018

Objective of SHARE project

Strengthening capacity of national health authorities and icddr,b to support **evidence-informed public health policy making** in Bangladesh leading to progress towards UHC and improved health equality particularly for **urban poor and those suffering from NCDs**

We try to strengthen capacity at 3 levels:

- At individual level**
- At organizational level**
- At institutional level**

Capacity Development

Individual

For Policy Makers

- ✓ PhD & Masters
- ✓ Health Policy System
- ✓ Analysis and use of HMIS data
- ✓ EIPM training

For Researcher

- ✓ Systematic review and meta analysis
- ✓ Public Engagement training
- ✓ Online Communication
- ✓ Health policy analysis

Organizational

- ✓ Systematic review center
- ✓ RPCC
- ✓ Impact group
- ✓ Gender equity and social inclusion (GESI)

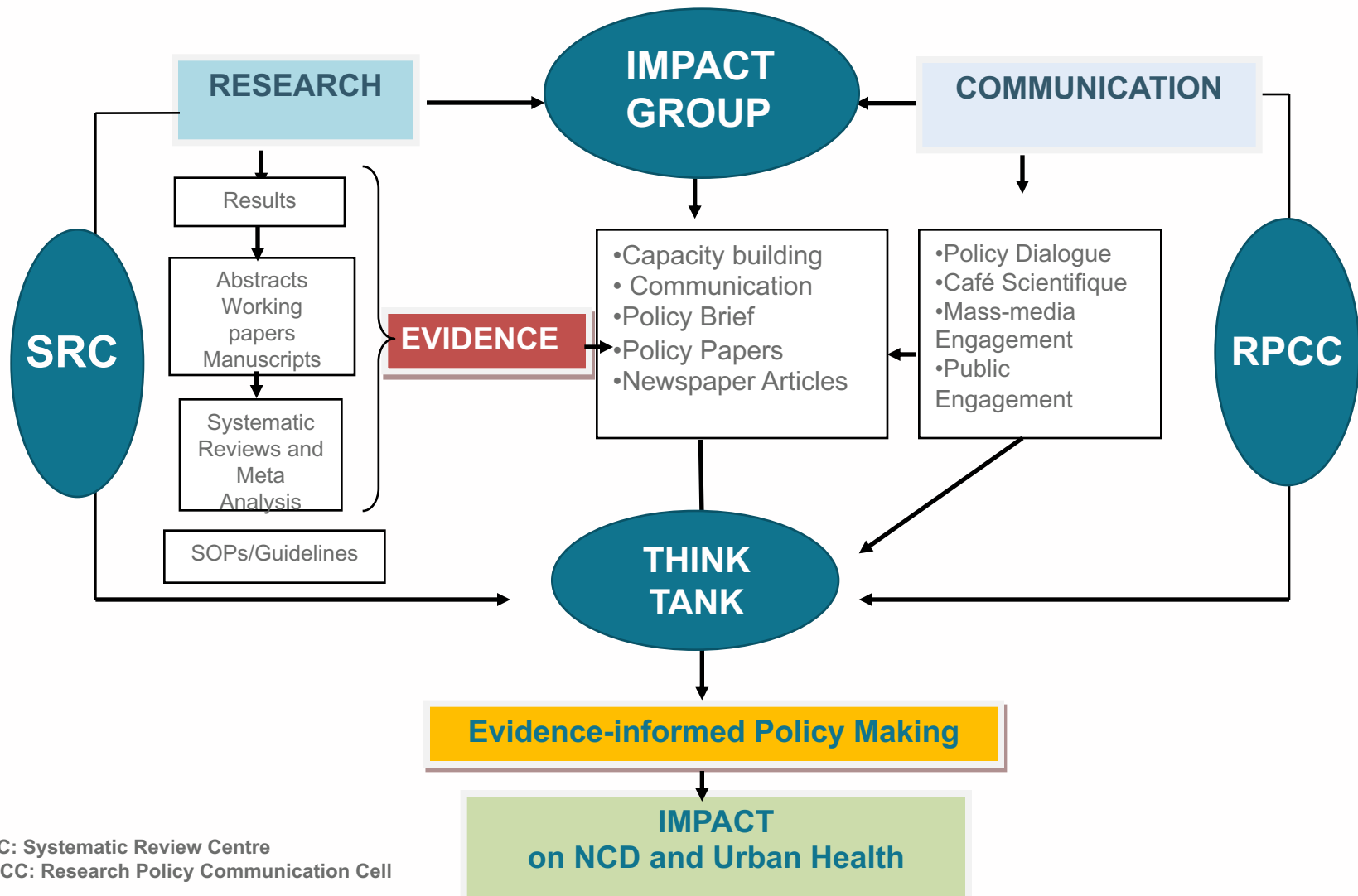
National

- ✓ Think Tank
- ✓ South south Collaboration

Additional: Public Engagement, Café Scientific, Journalist orientation

Community Voice

Evidence-informed Policy Process in SHARE project



*SRC: Systematic Review Centre
RPCC: Research Policy Communication Cell

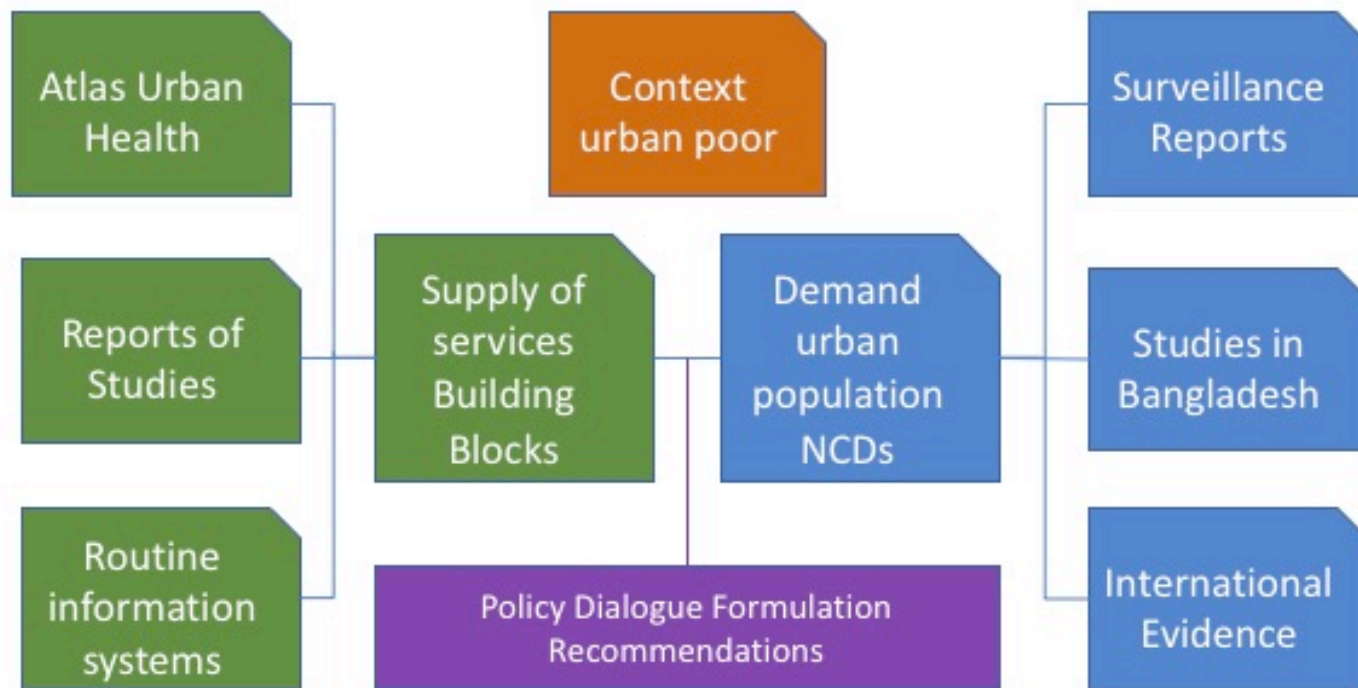
Systematic Review Centre (SRC) at BSMMU

- ❑ **Trainings organized** → Systematic Review and Meta Analysis
- ❑ **Scoping Review completed:** Indices used to measure inequalities in health related studies among South Asian urban population
- ❑ **Gap-Map: Governance in Primary Health Care (PHC)**
- ❑ **Systematic Review:** Effective non pharmacological interventions for prevention of **hypertension** in LMICs → Ongoing



Knowledge Synthesis on Urban Health and NCDs → ongoing

- ❑ By Health system building blocks
- ❑ Compared with Time to Deliver



International Recognitions of the SRC

- ❑ Membership in **Global Evidence Synthesis Initiative (GESI)** → Evidence Synthesis for Impact, icddr,b
(through a competitive process)
- ❑ Invitation from Cochrane Review Group to be an associate Centre of Cochrane (**Cochrane Bangladesh**) to be hosted at icddr,b)

Research Policy Communication Cell (RPCC) at DGHS: Training on Evidence-Informed Health Policy

- ❑ Partner: Research and Planning Unit, DGHS
- ❑ 3-day trainings: Facilitators from icddr,b, DGHS, BSMMU, IEDCR
- ❑ More than 1000 managers trained



Strengthening HMIS: Capacity building for data-driven decision making

- Health managers, statisticians, nurses, field workers, IT focal persons have been trained- 8 Divisional Trainings
- DHIS2 e-Learning Course Launched



RPCCC Dissemination Seminar

Salt as an NCD Risk Factor



Impact Group at icddr,b: for Knowledge Translation





Public engagement on NCD in book-fair

- Mass awareness on health risks caused by NCDs like diabetics, heart diseases, cancer etc.



Public Engagement: Prevention of NCDs among adolescents in Urban Areas



TV Talk Show on NCDs



Café Scientifique: Prevention of Breast Cancer



Total two 'Cafe Scientifique' organized on NCDs

First ever ‘Think Tank for Health’ in Bangladesh

- ❑ Formulated ‘Think tank for health’ in January, 2017
- ❑ Engaged prominent health professionals, academicians, scientists, health and human rights experts
- ❑ ‘Constitution for Think Tank’ developed



Health Policy Dialogue:

Think Tank Inaugurated in Sept 2017, held 3 policy dialogues





Organizing International Conferences

- 2016: Measurement and Accountability for Health (MA4Health)
- 2017: Data for Decision Making in Health, Dhaka, April 2017
- 2019: Community Health Workers, Dhaka Bangladesh



Sustainability of SHARE project: beyond 2020

- ❑ **RPCC** → Included in Operational Plan, DGHS, MOH&FW

- ❑ **SRC** → SHARE Team member recruited as BSMMU Staff;
 - Staff generated funds from WHO

- ❑ **Impact Group** → established at icddr,b
 - with Members from Communication; all divisions

- ❑ **Think Tank** → Independent national body functional – to be registered by end of this year

Thank you!

Questions/comments:
sohana.shafique@icddr.org

Supported by



icddr,b thanks its core donors for their on-going support



Government of the People's
Republic of Bangladesh

Canada 

