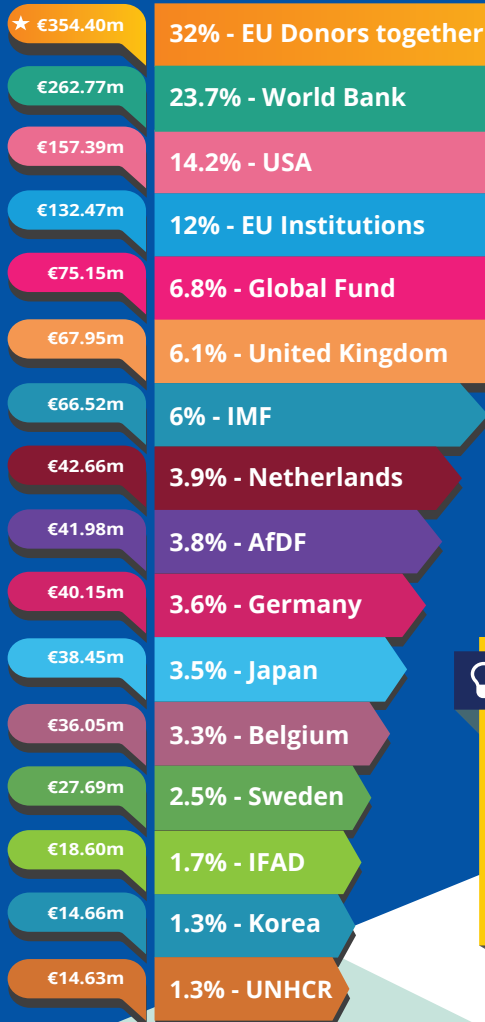




## Rwanda largest donors in 2017



**€446.95m**  
Total EU ODA

**EU donors together €354.40m**  
32% of bilateral flows

WB (IDA)  
€74.97m

UN  
agencies  
€17.58m

EU non-bilateral aid

### RWANDA FACTS

- Low Income Country  
(World Bank classification)
- Least Developed Country  
(UN classification)
- Fragile state  
(OECD fragility index)

### Aid as % share of GDP

\*Government revenue: Revenue consists of taxes, social contributions, grants receivable, and other revenue.

GDP **€8.11bn**

Government revenue **22.86%**

Remittances **2.35%**

FDI **3.21%**

Total ODA **13.66%**

EU ODA **4.37%**

### The main sectors funded by the EU

**€76.58m**

Energy

**€49.58m**

Government  
& Civil  
Society

**€82.96m**

Agriculture,  
Forestry  
& Fishing

### EU bilateral aid implemented through

UN agencies  
**€18.23m**

WB Group  
**€20.14m**

The EU and the Member States channel funds through a range of international organisations.  
This infographic may not fully capture all of the funds.

### For more information contact:

EEAS JOINT PROGRAMMING:  
joint-programming-support@eeas.europa.eu

EU AID EXPLORER:  
https://euaidexplorer.ec.europa.eu

DEVCO JOINT PROGRAMMING:  
devco-joint-programming-support@ec.europa.eu

### Sources:

OECD DAC CRS: <https://stats.oecd.org/org/qwids/>  
MF WEO 2018 Database:  
<http://www.imf.org/external/pubs/ft/weo/2018/01/weodata/index.aspx>  
Exchange rate: \$1 = €0.887397 (OECD exchange rate for 2017)

JOINT PROGRAMMING TRACKER:  
<https://europa.eu/capacity4dev/joint-programming-tracker>

Note: EU refers to EU Institutions and Member States together

